



HYDRAULIC CRANES HT25KX(20')

EQUIPPED WITH



MAX. CAPACITY
5,000 LBS

CRANE RATING
25,000 FT-LBS

MAX. REACH
20 FT

MIN. GVWR
10,500 LBS

CONTROLS
VLC™

FEATURES

■ FULL-HYDRAULIC EXTENSION

The boom lengths for the HT25KX is fully-hydraulic 20 ft.

■ NEW AUTO ADJUST ANTI-TWO BLOCK

Innovative, rugged and compact anti-two block design automatically adjusts to boom angle. Minimizes hook-to-boom tip height and is less prone to damage.

■ NEW BOOM TIP WORKLIGHT

Optional worklight that automatically adjusts to the boom angle so you can follow your load.

5,000 LB CAPACITY AT 5 FT

The Venturo HT25KX with VLC™ controls features a maximum capacity of 5,000 lb. **Venturo's new Electronic Crane Control Management System** provides added safety and benefits for crane operators. Benefits include a standard, wireless, pistolgrip controller, overload protection which controls and prevents any type of overload, LCD Display Screen alerts, transmitter handle vibrations, green/yellow/red alert lights under boom, and corresponding lights on the receiver. The LCD display shows percentage of load, boom angle in degrees and percentage of total capacity during crane operation. The VLC™ system also provides vehicle stability and grade control.

SPECIFICATIONS

Lifting Capacities:	5,000 lbs
Crane Rating:	25,000 ft-lbs
Mounting Space:	16" x 16"
Stowed Height:	30-5/8"
Rope Diameter:	5/16" @ 80'
Line pull speed:	22 ft/min @ 5 GPM (Single) 11 ft/min @ 5 GPM (Double)
Max. Single-line:	2,500 lbs
Max. Double-line:	5,000 lbs
Rotation:	400°
Power Supply:	PTO & Pump Required
Requirements:	5 gpm @ 3,000 psi
Hydraulic Req:	10 gal. reservoir
Boom Elevation:	-8° to +75°
Controls:	VLC™ (Venturo Logic Controls) Standard Wireless Remote
Boom Extension 1:	10' - 16' - 20' Full Hydraulic
Hydraulic Req:	5 GPM with 10 gal. reservoir
Minimum Vehicle Class:	Class 3 (10,500 lbs GVWR)

**VLC™ SYSTEM CONTROLS**

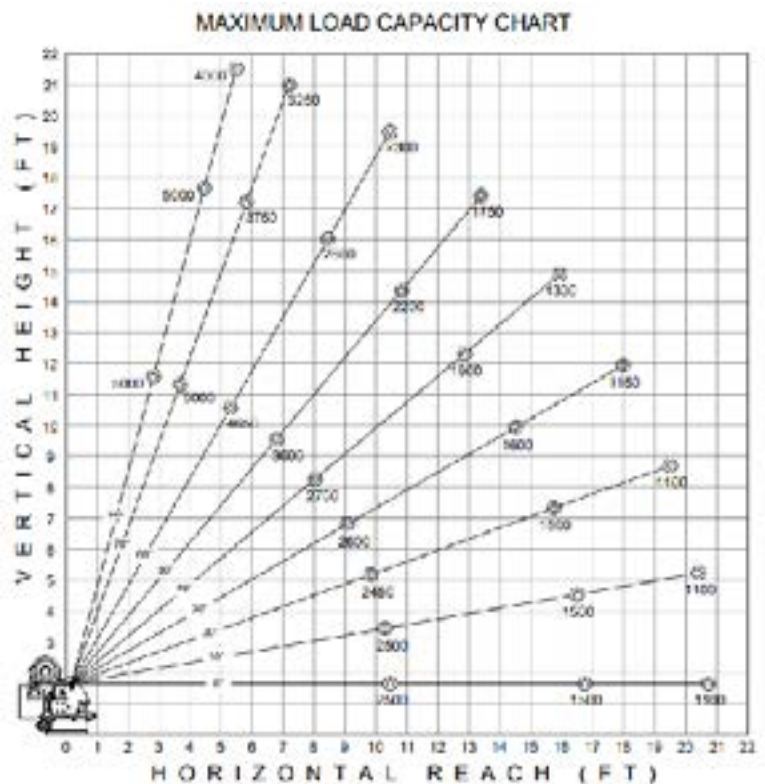
Multiple Safety and Capacity Alerts
Green/Yellow/Red alert light located on the underside of the boom.

Overload/Stability Safety

The VLC system controls and prevents any type of overload on the crane and also provides stability and grade control.

**Wireless Remote**

The wireless remote, pistol-grip controller is a standard feature as part of the VLC™ system for ALL proportionally-controlled hydraulic Venturo service cranes.

MAXIMUM LOAD CAPACITY CHART



HYDRAULIC CRANES HT25KX(25')

EQUIPPED WITH



MAX. CAPACITY
5,000 LBS

CRANE RATING
25,000 FT-LBS

MAX. REACH
25 FT

MIN. GVWR
10,500 LBS

CONTROLS
VLC™

FEATURES

■ FULL-HYDRAULIC EXTENSION

The boom lengths for the HT25KX is fully-hydraulic 25 ft.

■ NEW AUTO ADJUST ANTI-TWO BLOCK

Innovative, rugged and compact anti-two block design automatically adjusts to boom angle. Minimizes hook-to-boom tip height and is less prone to damage.

■ NEW BOOM TIP WORKLIGHT

Optional worklight that automatically adjusts to the boom angle so you can follow your load.

5,000 LB CAPACITY AT 5 FT

The Venturo HT25KX with VLC™ controls features a maximum capacity of 5,000 lb. **Venturo's new Electronic Crane Control Management System** provides added safety and benefits for crane operators. Benefits include a standard, wireless, pistolgrip controller, overload protection which controls and prevents any type of overload, LCD Display Screen alerts, transmitter handle vibrations, green/yellow/red alert lights under boom, and corresponding lights on the receiver. The LCD display shows percentage of load, boom angle in degrees and percentage of total capacity during crane operation. The VLC™ system also provides vehicle stability and grade control.

SPECIFICATIONS

Lifting Capacities:	5,000 lbs
Crane Rating:	25,000 ft-lbs
Mounting Space:	16" x 16"
Stowed Height:	30-5/8"
Rope Diameter:	5/16" @ 80'
Line pull speed:	22 ft/min @ 5 GPM (Single) 11 ft/min @ 5 GPM (Double)
Max. Single-line:	2,500 lbs
Max. Double-line:	5,000 lbs
Rotation:	400°
Power Supply:	PTO & Pump Required
Requirements:	5 gpm @ 3,000 psi
Hydraulic Req:	10 gal. reservoir
Boom Elevation:	-8° to +75°
Controls:	VLC™ (Venturo Logic Controls) Standard Wireless Remote
Boom Extension 1:	12' - 18' - 25' Full Hydraulic
Hydraulic Req:	5 GPM with 10 gal. reservoir
Minimum Vehicle Class:	Class 3 (10,500 lbs GVWR)

**VLC™ SYSTEM CONTROLS**

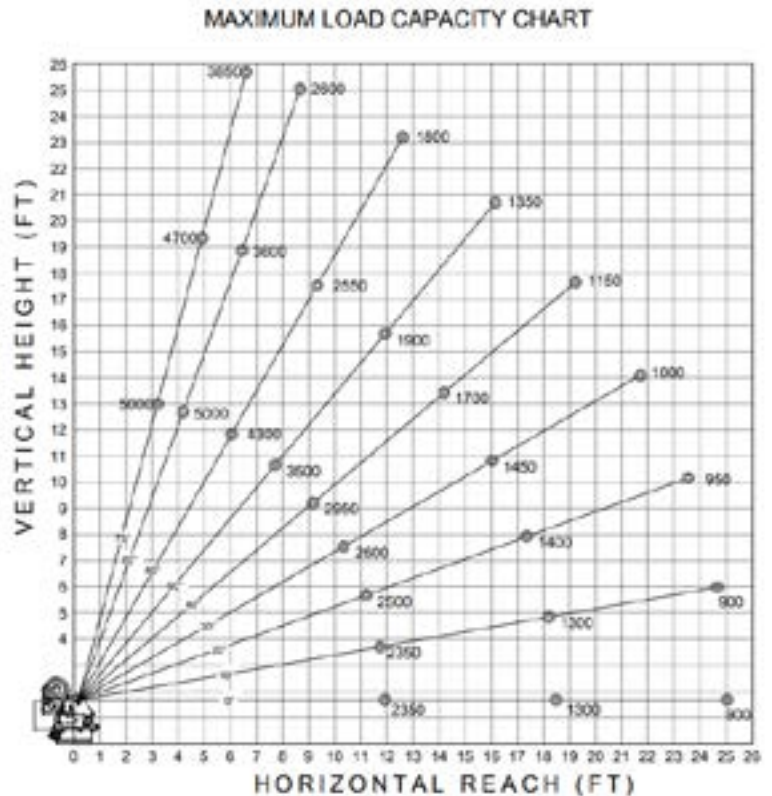
Multiple Safety and Capacity Alerts
Green/Yellow/Red alert light located on the underside of the boom.

Overload/Stability Safety

The VLC system controls and prevents any type of overload on the crane and also provides stability and grade control.

**Wireless Remote**

The wireless remote, pistol-grip controller is a standard feature as part of the VLC™ system for ALL proportionally-controlled hydraulic Venturo service cranes.

MAXIMUM LOAD CAPACITY CHART

Venco Venturo Industries LLC
12110 Best Place | Cincinnati, Ohio 45241
800-226-2238 | 513-772-8448 Local
info@venturo.com | www.venturo.com

NOTE: All Venturo service cranes meet ANSI B30.5 and OSHA 1910.180 specifications. Specifications subject to change without notice. Copyright © 2019 Venco Venturo Industries LLC. All Rights Reserved.



HYDRAULIC CRANES HT30KX(20')

EQUIPPED WITH



MAX. CAPACITY
5,000 LBS

CRANE RATING
30,000 FT-LBS

MAX. REACH
20 FT

MIN. GVWR
11,000 LBS

CONTROLS
VLC™

FEATURES

- **FULL-HYDRAULIC EXTENSION**
The standard boom length for the HT30KX is 20'.
- **NEW AUTO ADJUST ANTI-TWO BLOCK**
Innovative, rugged and compact anti-two block design automatically adjusts to boom angle. Minimizes hook-to-boom tip height and is less prone to damage.
- **NEW BOOM TIP WORKLIGHT**
Optional worklight that automatically adjusts to the boom angle so you can follow your load.

5,000 LB CAPACITY AT 6 FT

The Venturo HT30KX with VLC™ controls features a maximum capacity of 5,000 lb. **Venturo's new Electronic Crane Control Management System** provides added safety and benefits for crane operators. Benefits include a standard, wireless, pistolgrip controller, overload protection which controls and prevents any type of overload, LCD Display Screen alerts, transmitter handle vibrations, green/yellow/red alert lights under boom, and corresponding lights on the receiver. The LCD display shows percentage of load, boom angle in degrees and percentage of total capacity during crane operation. The VLC™ system also provides vehicle stability and grade control.

SPECIFICATIONS

Lifting Capacities:	5,000 lbs
Crane Rating:	30,000 ft-lbs
Mounting Space:	16" x 16"
Stowed Height:	30-5/8"
Rope Diameter:	5/16" @ 80'
Line pull speed:	55 ft/min @ 5 GPM (Single) 27 ft/min @ 5 GPM (Double)
Max. Single-line:	2,500 lbs
Max. Double-line:	5,000 lbs
Rotation:	400°
Power Supply:	PTO & Pump Required
Requirements:	5 gpm @ 3,000 psi
Hydraulic Req:	10 gal. reservoir
Boom Elevation:	-8° to +75°
Controls:	VLC (Venturo Logic Controls) Standard Wireless Remote
Boom Extension:	10' - 16' - 20' Full Hydraulic
Hydraulic Req:	5 GPM with 10 gal. reservoir
Minimum Vehicle Class:	Class 3 (11,000 lbs GVWR)

VLC™ SYSTEM CONTROLS**Multiple Safety and Capacity Alerts**

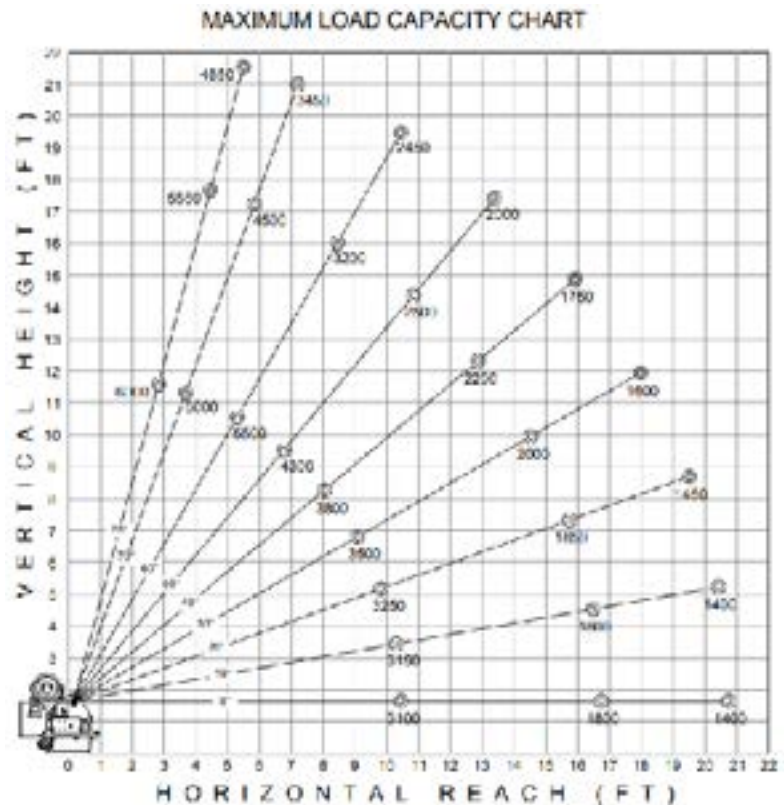
Green/Yellow/Red alert light located on the underside of the boom.

Overload/Stability Safety

The VLC system controls and prevents any type of overload on the crane and also provides stability and grade control.

**Wireless Remote**

The wireless remote, pistol-grip controller is a standard feature as part of the VLC™ system for ALL proportionally-controlled hydraulic Venturo service cranes.

MAXIMUM LOAD CAPACITY CHART

Venco Venturo Industries LLC
 12110 Best Place | Cincinnati, Ohio 45241
 800-226-2238 | 513-772-8448 Local
info@venturo.com | www.venturo.com

NOTE: All Venturo service cranes meet ANSI B30.5 and OSHA 1910.180 specifications. Specifications subject to change without notice. Copyright © 2019 Venco Venturo Industries LLC. All Rights Reserved.



HYDRAULIC CRANES HT30KX(25')

EQUIPPED WITH



MAX. CAPACITY
5,000 LBS

CRANE RATING
30,000 FT-LBS

MAX. REACH
25 FT

MIN. GVWR
11,000 LBS

CONTROLS
VLC™

FEATURES

- **FULL-HYDRAULIC EXTENSION**
The standard boom length for the HT30KX is 25'.
- **NEW AUTO ADJUST ANTI-TWO BLOCK**
Innovative, rugged and compact anti-two block design automatically adjusts to boom angle. Minimizes hook-to-boom tip height and is less prone to damage.
- **NEW BOOM TIP WORKLIGHT**
Optional worklight that automatically adjusts to the boom angle so you can follow your load.

5,000 LB CAPACITY AT 6 FT

The Venturo HT30KX with VLC™ controls features a maximum capacity of 5,000 lb. **Venturo's new Electronic Crane Control Management System** provides added safety and benefits for crane operators. Benefits include a standard, wireless, pistolgrip controller, overload protection which controls and prevents any type of overload, LCD Display Screen alerts, transmitter handle vibrations, green/yellow/red alert lights under boom, and corresponding lights on the receiver. The LCD display shows percentage of load, boom angle in degrees and percentage of total capacity during crane operation. The VLC™ system also provides vehicle stability and grade control.

SPECIFICATIONS

Lifting Capacities:	5,000 lbs
Crane Rating:	30,000 ft-lbs
Mounting Space:	16" x 16"
Stowed Height:	30-5/8"
Rope Diameter:	5/16" @ 80'
Line pull speed:	55 ft/min @ 5 GPM (Single) 27 ft/min @ 5 GPM (Double)
Max. Single-line:	2,500 lbs
Max. Double-line:	5,000 lbs
Rotation:	400°
Power Supply:	PTO & Pump Required
Requirements:	5 gpm @ 3,000 psi
Hydraulic Req:	10 gal. reservoir
Boom Elevation:	-8° to +75°
Controls:	VLC (Venturo Logic Controls) Standard Wireless Remote
Boom Extension:	12' - 18' - 25' Full Hydraulic
Hydraulic Req:	5 GPM with 10 gal. reservoir
Minimum Vehicle Class:	Class 3 (11,000 lbs GVWR)

VLC™ SYSTEM CONTROLS**Multiple Safety and Capacity Alerts**

Green/Yellow/Red alert light located on the underside of the boom.

Overload/Stability Safety

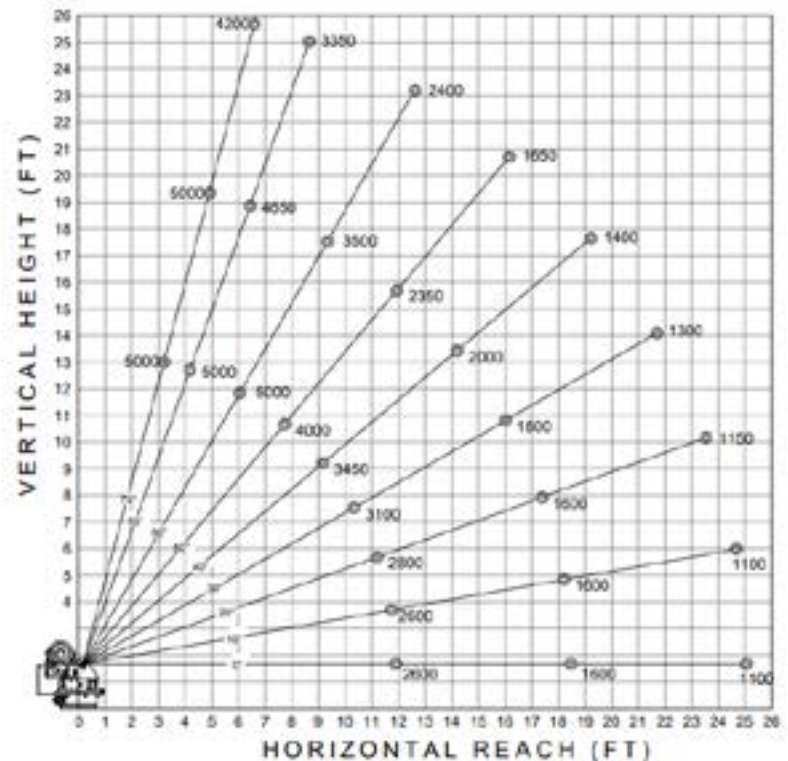
The VLC system controls and prevents any type of overload on the crane and also provides stability and grade control.

**Wireless Remote**

The wireless remote, pistol-grip controller is a standard feature as part of the VLC™ system for ALL proportionally-controlled hydraulic Venturo service cranes.

MAXIMUM LOAD CAPACITY CHART

MAXIMUM LOAD CAPACITY CHART



Venco Venturo Industries LLC
 12110 Best Place | Cincinnati, Ohio 45241
 800-226-2238 | 513-772-8448 Local
info@venturo.com | www.venturo.com

NOTE: All Venturo service cranes meet ANSI B30.5 and OSHA 1910.180 specifications. Specifications subject to change without notice. Copyright © 2019 Venco Venturo Industries LLC. All Rights Reserved.



HYDRAULIC CRANES

HT40KX



MAX. CAPACITY
6,000 LBS

CRANE RATING
40,000 FT-LBS

MAX. REACH
20 FT

MIN. GVWR
14,500 LBS

CONTROLS
HYDRAULIC

FEATURES

- **FULL-HYDRAULIC EXTENSION**
The standard boom length for the HT40KX is 20'.
- **POWERFUL HYDRAULIC WINCH**
The HT series cranes feature a high-efficiency planetary gear reduction with a spring-applied hydraulic released multi-disk brake driven by a hydraulic gear motor.
- **PROPORTIONAL CONTROLS**
The HT40KX is offered in proportional control giving the operator flexibility in hydraulic speeds.

SETTING THE STANDARD FOR HYDRAULIC CRANES

The Ventura HT40KX sets the standard for hydraulic, proportional control service cranes. This crane features a 40,000 ft-lb crane rating with a maximum capacity of 6,000 lbs at 6 ft. This crane has become a standard service application in the propane and construction industry. The HT40KX with 20' boom length is available in proportional control.

SPECIFICATIONS

Lifting Capacities:	6,000 lbs
Crane Rating:	40,000 ft-lbs
Mounting Space:	16" x 16"
Stowed Height:	36-7/8"
Rope Diameter:	3/8" @ 100'
Line pull speed:	60 ft/min @ 12 GPM (Single) 30 ft/min @ 12 GPM (Double)
Max. Single-line:	3,000 lbs
Max. Double-line:	6,000 lbs
Rotation:	400°
Power Supply:	PTO & Pump Required
Requirements:	12 gpm @ 3,000 psi
Hydraulic Req:	25 gal. reservoir
Boom Elevation:	-8° to +75°
Controls:	Full-Hydraulic Proportional
Boom Extension 1:	10' - 16' - 20' Full Hydraulic
Minimum Vehicle Class:	Class 4 (14,500 lbs GVWR)

OPTIONS & ACCESSORIES

Mounting Pedestals/Boom Rests

36" pedestals for platform bodies and adjustable 18" - 26" boom rests for utility bodies.

Outrigger Packages

HT40KX requires rear outrigger packages that include either Manual or Hydraulic.

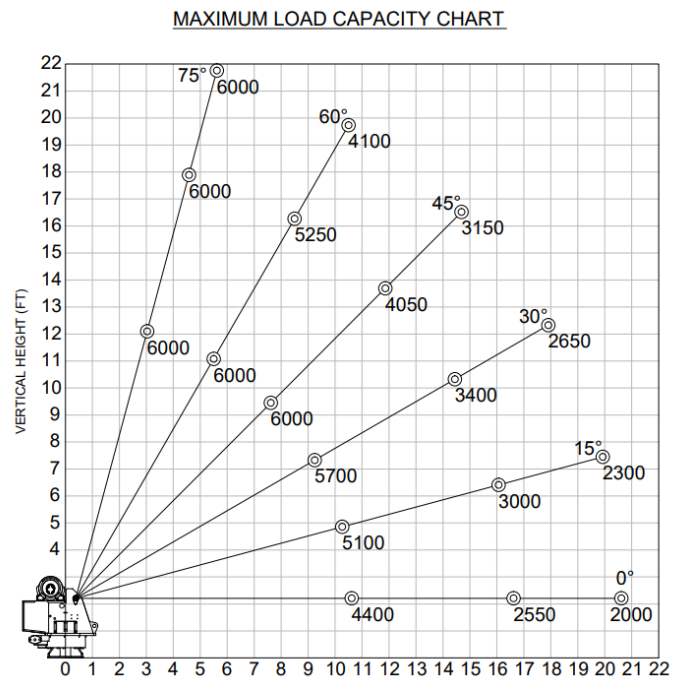
Wireless Remote

Wireless FM remote control with onboard diagnostic system and receiver.

Pumps

Optional pumps for proportional control.

MAXIMUM LOAD CAPACITY CHART



Venco Venturo Industries LLC
 12110 Best Place | Cincinnati, Ohio 45241
 800-226-2238 | 513-772-8448 Local
info@venturo.com | www.venturo.com

NOTE: All Venturo service cranes meet ANSI B30.5 and OSHA 1910.180 specifications. Specifications subject to change without notice. Copyright © 2019 Venco Venturo Industries LLC. All Rights Reserved.



HYDRAULIC CRANES HT45KX(20')



MAX. CAPACITY
7,500 LBS

CRANE RATING
45,600 FT-LBS

MAX. REACH
20'

MIN. GVWR
16,000 LBS

CONTROLS
VLC™

FEATURES

■ FULL-HYDRAULIC EXTENSION

The HT45KX-VLC offers a 20 ft hydraulic power boom extension.

■ NEW AUTO ADJUST ANTI-TWO BLOCK

Innovative, rugged and compact anti-two block design automatically adjusts to boom angle. Minimizes hook-to-boom tip height and is less prone to damage.

■ NEW BOOM TIP WORKLIGHT

Optional worklight that automatically adjusts to the boom angle so you can follow your load anytime.

The Venturo HT45KX with VLC™ controls features a maximum capacity of 7,800 lb. **Venturo's new Electronic Crane Control Management System** provides added safety and benefits for crane operators. Benefits include a standard, wireless, pistol-grip controller, overload protection which controls and prevents any type of overload, LCD Display Screen alerts, transmitter handle vibrations, green/yellow/red alert lights under boom, and corresponding lights on the receiver. The LCD display shows percentage of load, boom angle in degrees and percentage of total capacity during crane operation. The VLC™ system also provides vehicle stability and grade control.

SPECIFICATIONS

Lifting Capacities:	7,500 lbs
Crane Rating:	45,600 ft-lbs
Mounting Space:	17" x 17"
Stowed Height:	36-5/8"
Rope Diameter:	3/8" @ 100'
Line pull speed:	60 ft/min @ 12 GPM (Single)
Max. Single-line:	3,750 lbs
Max. Double-line:	7,500 lbs
Rotation:	400°
Power Supply:	PTO & Pump Required
Requirements:	12 gpm @ 3,000 psi
Hydraulic Req:	25 Gallon Reservoir
Boom Elevation:	-8° to +75°
Controls:	VLC™ (Venturo Logic Controls) Standard Wireless Remote
Boom Extension 1:	10' - 16' - 20' Full Hydraulic
Minimum GVWR:	Class 5 (16,000 LBS)

VLC™ SYSTEM CONTROLS**Multiple Safety and Capacity Alerts**

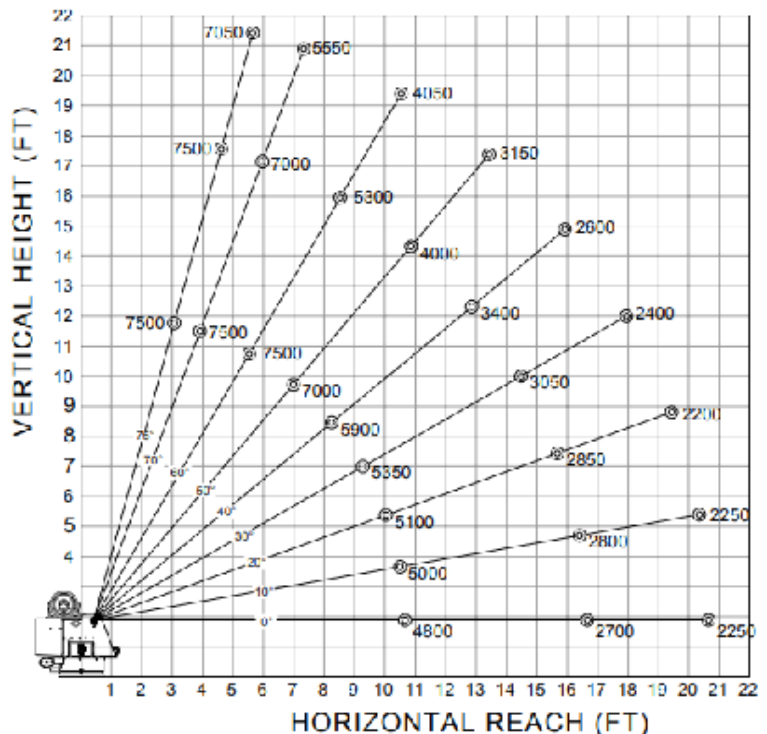
Green/Yellow/Red alert light located on the underside of the boom.

Overload/Stability Safety

The VLC system controls and prevents any type of overload on the crane and also provides stability and grade control.

**Wireless Remote**

The wireless remote, pistol-grip controller is a standard feature as part of the VLC™ system for ALL proportionally-controlled hydraulic Venturo service cranes.

**MAXIMUM LOAD CAPACITY CHART**



HYDRAULIC CRANES HT45KX(25')



MAX. CAPACITY
7,800 LBS

CRANE RATING
45,600 FT-LBS

MAX. REACH
25'

MIN. GVWR
16,000 LBS

CONTROLS
VLC™

FEATURES

■ FULL-HYDRAULIC EXTENSION

The HT45KX-VLC offers a 25 ft hydraulic power boom extension.

■ NEW AUTO ADJUST ANTI-TWO BLOCK

Innovative, rugged and compact anti-two block design automatically adjusts to boom angle. Minimizes hook-to-boom tip height and is less prone to damage.

■ NEW BOOM TIP WORKLIGHT

Optional worklight that automatically adjusts to the boom angle so you can follow your load anytime.

The Venturo HT45KX with VLC™ controls features a maximum capacity of 7,800 lb. **Venturo's new Electronic Crane Control Management System** provides added safety and benefits for crane operators. Benefits include a standard, wireless, pistol-grip controller, overload protection which controls and prevents any type of overload, LCD Display Screen alerts, transmitter handle vibrations, green/yellow/red alert lights under boom, and corresponding lights on the receiver. The LCD display shows percentage of load, boom angle in degrees and percentage of total capacity during crane operation. The VLC™ system also provides vehicle stability and grade control.

SPECIFICATIONS

Lifting Capacities:	7,800 lbs
Crane Rating:	45,600 ft-lbs
Mounting Space:	17" x 17"
Stowed Height:	36-5/8"
Rope Diameter:	3/8" @ 100'
Line pull speed:	60 ft/min @ 12 GPM (Single)
Max. Single-line:	3,900 lbs
Max. Double-line:	7,800 lbs
Rotation:	400°
Power Supply:	PTO & Pump Required
Requirements:	12 gpm @ 3,000 psi
Hydraulic Req:	25 Gallon Reservoir
Boom Elevation:	-8° to +75°
Controls:	VLC™ (Venturo Logic Controls) Standard Wireless Remote
Boom Extension 1:	12' - 18' - 25' Full Hydraulic
Minimum GVWR:	Class 5 (16,000 LBS)

**VLC™ SYSTEM CONTROLS****Multiple Safety and Capacity Alerts**

Green/Yellow/Red alert light located on the underside of the boom.

Overload/Stability Safety

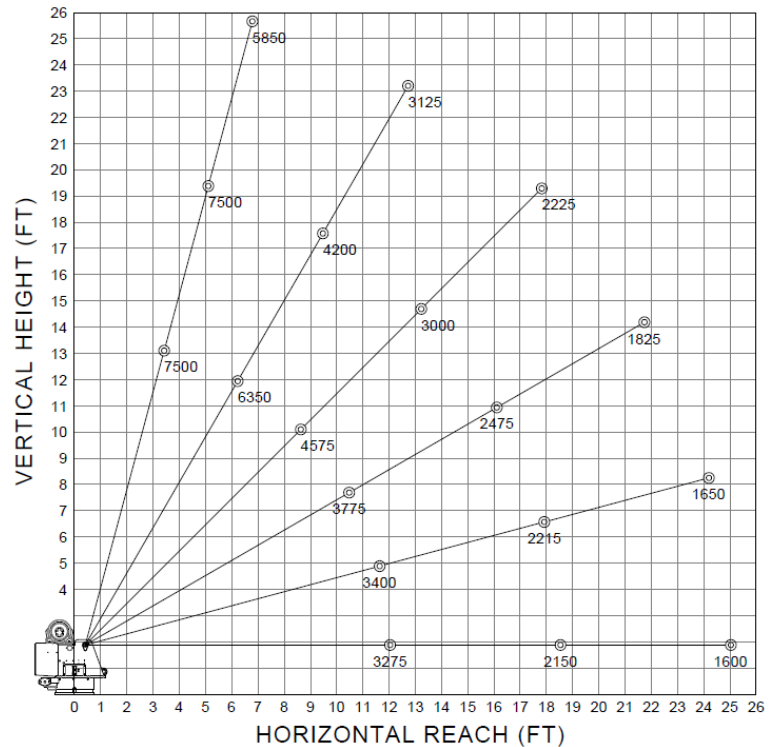
The VLC system controls and prevents any type of overload on the crane and also provides stability and grade control.

**Wireless Remote**

The wireless remote, pistol-grip controller is a standard feature as part of the VLC™ system for ALL proportionally-controlled hydraulic Venturo service cranes.

MAXIMUM LOAD CAPACITY CHART

MAXIMUM LOAD CAPACITY CHART





HYDRAULIC CRANES HT45KX(30')



MAX. CAPACITY
7,800 LBS

CRANE RATING
45,600 FT-LBS

MAX. REACH
30'

MIN. GVWR
16,000 LBS

CONTROLS
VLC™

FEATURES

■ FULL-HYDRAULIC EXTENSION

The HT45KX-VLC offers a 30 ft hydraulic power boom extension.

■ NEW AUTO ADJUST ANTI-TWO BLOCK

Innovative, rugged and compact anti-two block design automatically adjusts to boom angle. Minimizes hook-to-boom tip height and is less prone to damage.

■ NEW BOOM TIP WORKLIGHT

Optional worklight that automatically adjusts to the boom angle so you can follow your load anytime.

The Venturo HT45KX with VLC™ controls features a maximum capacity of 7,800 lb. **Venturo's new Electronic Crane Control Management System** provides added safety and benefits for crane operators. Benefits include a standard, wireless, pistol-grip controller, overload protection which controls and prevents any type of overload, LCD Display Screen alerts, transmitter handle vibrations, green/yellow/red alert lights under boom, and corresponding lights on the receiver. The LCD display shows percentage of load, boom angle in degrees and percentage of total capacity during crane operation. The VLC™ system also provides vehicle stability and grade control.

SPECIFICATIONS

Lifting Capacities:	7,800 lbs
Crane Rating:	45,600 ft-lbs
Mounting Space:	17" x 17"
Stowed Height:	36-5/8"
Rope Diameter:	3/8" @ 100'
Line pull speed:	60 ft/min @ 12 GPM (Single)
Max. Single-line:	3,900 lbs
Max. Double-line:	7,800 lbs
Rotation:	400°
Power Supply:	PTO & Pump Required
Requirements:	12 gpm @ 3,000 psi
Hydraulic Req:	25 Gallon Reservoir
Boom Elevation:	-8° to +75°
Controls:	VLC™ (Venturo Logic Controls) Standard Wireless Remote
Boom Extension 1:	13.5' - 20' - 30' Full Hydraulic
Minimum GVWR:	Class 5 (16,000 LBS)

**VLC™ SYSTEM CONTROLS****Multiple Safety and Capacity Alerts**

Green/Yellow/Red alert light located on the underside of the boom.

Overload/Stability Safety

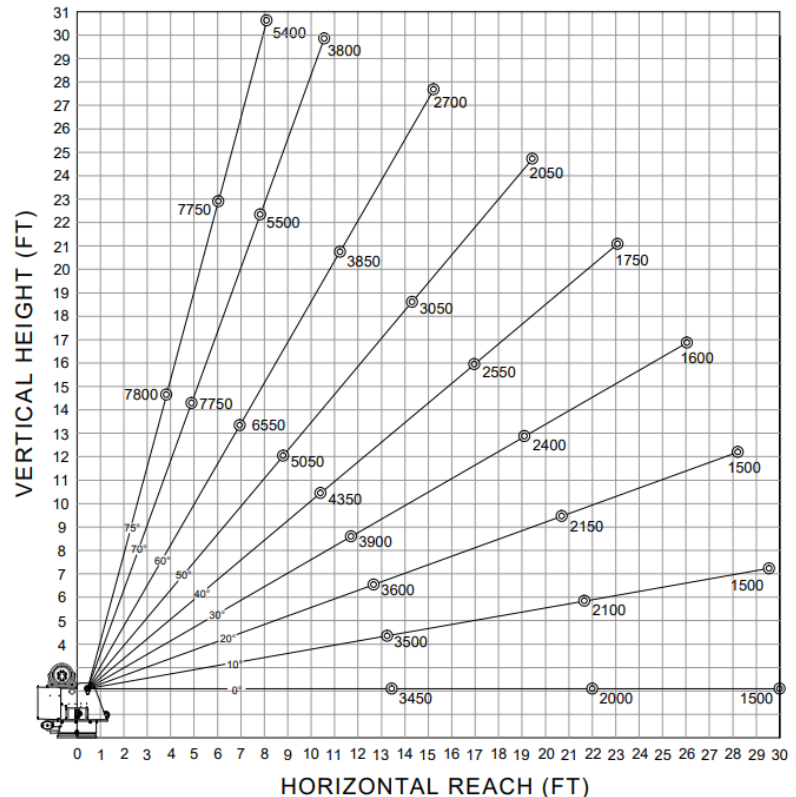
The VLC system controls and prevents any type of overload on the crane and also provides stability and grade control.

**Wireless Remote**

The wireless remote, pistol-grip controller is a standard feature as part of the VLC™ system for ALL proportionally-controlled hydraulic Venturo service cranes.

**MAXIMUM LOAD CAPACITY CHART**

MAXIMUM LOAD CAPACITY CHART





HYDRAULIC CRANES HT55KX (20')



EQUIPPED WITH



MAX. CAPACITY
8,500 LBS

CRANE RATING
55,000 FT-LBS

MAX. REACH
20 FT

MIN. GVWR
20,500 LBS

CONTROLS
VLC™

FEATURES

■ FULL-HYDRAULIC EXTENSION

The standard boom length for the HT55KX is 20 ft, perfect to reach certain areas at the jobsite.

■ NEW AUTO ADJUST ANTI-TWO BLOCK

Innovative, rugged and compact anti-two block design automatically adjusts to boom angle. Minimizes hook-to-boom tip height and is less prone to damage.

■ NEW BOOM TIP WORKLIGHT

Optional worklight that automatically adjusts to the boom angle so you can follow your load anytime.

The Venturo HT55KX with VLC™ controls features a maximum capacity of 8,500 lb. **Venturo's new Electronic Crane Control Management System** provides added safety and benefits for crane operators. Benefits include a standard, wireless, pistol-grip controller, overload protection which controls and prevents any type of overload, LCD Display Screen alerts, transmitter handle vibrations, green/yellow/red alert lights under boom, and corresponding lights on the receiver. The LCD display shows percentage of load, boom angle in degrees and percentage of total capacity during crane operation. The VLC™ system also provides vehicle stability and grade control.

SPECIFICATIONS

Lifting Capacities:	8,500 lbs
Crane Rating:	55,000 ft-lbs
Mounting Space:	16" x 16"
Stowed Height:	36-7/8"
Rope Diameter:	3/8" @ 100'
Line pull speed:	67 ft/min @ 12 GPM (Single) 33 ft/min @ 12 GPM (Double)
Max. Single-line:	4,250 lbs
Max. Double-line:	8,500 lbs
Rotation:	400°
Power Supply:	PTO & Pump Required
Requirements:	12 gpm @ 3,000 psi
Hydraulic Req:	25 gal. reservoir
Boom Elevation:	-8° to +75°
Controls:	VLC™ (Venturo Logic Controls) Standard Wireless Remote
HT55KX Ext.	10' - 16' - 20' Full Hydraulic
Hydraulic Req:	12 GPM with 25 gal. reservoir
Minimum Vehicle Class:	Class 6 (20,500 lbs GVWR)

**VLC™ SYSTEM CONTROLS****Multiple Safety and Capacity Alerts**

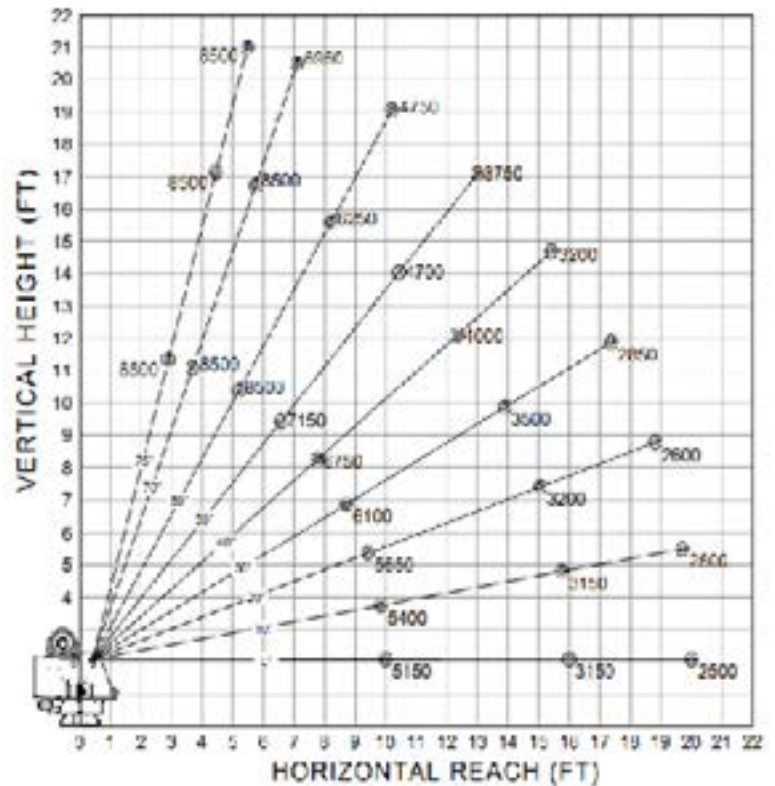
Green/Yellow/Red alert light located on the underside of the boom.

Overload/Stability Safety

The VLC system controls and prevents any type of overload on the crane and also provides stability and grade control.

**Wireless Remote**

The wireless remote, pistol-grip controller is a standard feature as part of the VLC™ system for ALL proportionally-controlled hydraulic Venturo service cranes.

MAXIMUM LOAD CAPACITY CHART



HYDRAULIC CRANES HT55KX (25')



EQUIPPED WITH



MAX. CAPACITY
8,500 LBS

CRANE RATING
55,000 FT-LBS

MAX. REACH
25 FT

MIN. GVWR
20,500 LBS

CONTROLS
VLC™

FEATURES

■ FULL-HYDRAULIC EXTENSION

The standard boom length for the HT55KX is 25 ft, perfect to reach certain areas at the jobsite.

■ NEW AUTO ADJUST ANTI-TWO BLOCK

Innovative, rugged and compact anti-two block design automatically adjusts to boom angle. Minimizes hook-to-boom tip height and is less prone to damage.

■ NEW BOOM TIP WORKLIGHT

Optional worklight that automatically adjusts to the boom angle so you can follow your load anytime.

The Venturo HT55KX with VLC™ controls features a maximum capacity of 8,500 lb. **Venturo's new Electronic Crane Control Management System** provides added safety and benefits for crane operators. Benefits include a standard, wireless, pistol-grip controller, overload protection which controls and prevents any type of overload, LCD Display Screen alerts, transmitter handle vibrations, green/yellow/red alert lights under boom, and corresponding lights on the receiver. The LCD display shows percentage of load, boom angle in degrees and percentage of total capacity during crane operation. The VLC™ system also provides vehicle stability and grade control.

SPECIFICATIONS

Lifting Capacities:	8,500 lbs
Crane Rating:	55,000 ft-lbs
Mounting Space:	16" x 16"
Stowed Height:	36-7/8"
Rope Diameter:	3/8" @ 100'
Line pull speed:	67 ft/min @ 12 GPM (Single) 33 ft/min @ 12 GPM (Double)
Max. Single-line:	4,250 lbs
Max. Double-line:	8,500 lbs
Rotation:	400°
Power Supply:	PTO & Pump Required
Requirements:	12 gpm @ 3,000 psi
Hydraulic Req:	25 gal. reservoir
Boom Elevation:	-8° to +75°
Controls:	VLC™ (Venturo Logic Controls) Standard Wireless Remote
HT55KX Ext.	12' - 18' - 25' Full Hydraulic
Hydraulic Req:	12 GPM with 25 gal. reservoir
Minimum Vehicle Class:	Class 6 (20,500 lbs GVWR)

**VLC™ SYSTEM CONTROLS****Multiple Safety and Capacity Alerts**

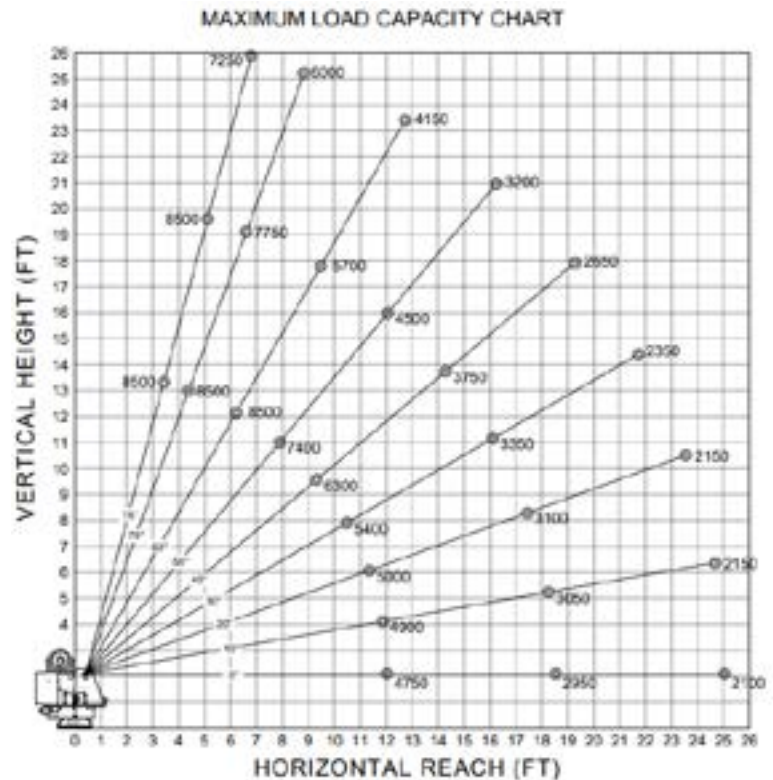
Green/Yellow/Red alert light located on the underside of the boom.

Overload/Stability Safety

The VLC system controls and prevents any type of overload on the crane and also provides stability and grade control.

**Wireless Remote**

The wireless remote, pistol-grip controller is a standard feature as part of the VLC™ system for ALL proportionally-controlled hydraulic Venturo service cranes.

**MAXIMUM LOAD CAPACITY CHART**



HYDRAULIC CRANES HT55KX (30')



EQUIPPED WITH



MAX. CAPACITY
8,500 LBS

CRANE RATING
55,000 FT-LBS

MAX. REACH
30 FT

MIN. GVWR
20,500 LBS

CONTROLS
VLC™

FEATURES

■ FULL-HYDRAULIC EXTENSION

The standard boom length for the HT55KX is 30 ft, perfect to reach certain areas at the jobsite.

■ NEW AUTO ADJUST ANTI-TWO BLOCK

Innovative, rugged and compact anti-two block design automatically adjusts to boom angle. Minimizes hook-to-boom tip height and is less prone to damage.

■ NEW BOOM TIP WORKLIGHT

Optional worklight that automatically adjusts to the boom angle so you can follow your load anytime.

The Venturo HT55KX with VLC™ controls features a maximum capacity of 8,500 lb. **Venturo's new Electronic Crane Control Management System** provides added safety and benefits for crane operators. Benefits include a standard, wireless, pistol-grip controller, overload protection which controls and prevents any type of overload, LCD Display Screen alerts, transmitter handle vibrations, green/yellow/red alert lights under boom, and corresponding lights on the receiver. The LCD display shows percentage of load, boom angle in degrees and percentage of total capacity during crane operation. The VLC™ system also provides vehicle stability and grade control.

SPECIFICATIONS

Lifting Capacities:	8,500 lbs
Crane Rating:	55,000 ft-lbs
Mounting Space:	16" x 16"
Stowed Height:	36-7/8"
Rope Diameter:	3/8" @ 100'
Line pull speed:	67 ft/min @ 12 GPM (Single) 33 ft/min @ 12 GPM (Double)
Max. Single-line:	4,250 lbs
Max. Double-line:	8,500 lbs
Rotation:	400°
Power Supply:	PTO & Pump Required
Requirements:	12 gpm @ 3,000 psi
Hydraulic Req:	25 gal. reservoir
Boom Elevation:	-8° to +75°
Controls:	VLC™ (Venturo Logic Controls) Standard Wireless Remote
HT55KX Ext.	13.5' - 20' - 30' Full Hydraulic
Hydraulic Req:	12 GPM with 25 gal. reservoir
Minimum Vehicle Class:	Class 6 (20,500 lbs GVWR)

**VLC™ SYSTEM CONTROLS****Multiple Safety and Capacity Alerts**

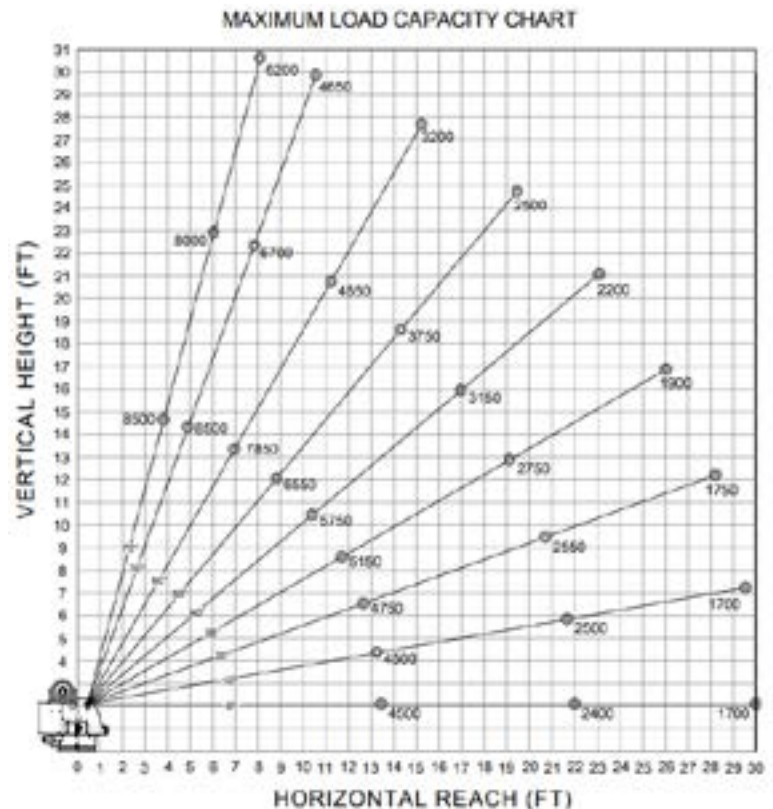
Green/Yellow/Red alert light located on the underside of the boom.

Overload/Stability Safety

The VLC system controls and prevents any type of overload on the crane and also provides stability and grade control.

**Wireless Remote**

The wireless remote, pistol-grip controller is a standard feature as part of the VLC™ system for ALL proportionally-controlled hydraulic Venturo service cranes.

**MAXIMUM LOAD CAPACITY CHART**

NOTE: All Venturo service cranes meet ANSI B30.5 and OSHA 1910.180 specifications. Specifications subject to change without notice. Copyright © 2019 Venco Venturo Industries LLC. All Rights Reserved.



HYDRAULIC CRANES HT66KX

EQUIPPED WITH



MAX. CAPACITY
11,500 LBS

CRANE RATING
66,000 FT-LBS

MAX. REACH
25 FT

MIN. GVWR
33,000 LBS

CONTROLS
VLC™

FEATURES

■ FULL-HYDRAULIC EXTENSION

The standard boom length for the HT66KX is 25' which is perfect to reach certain areas at the jobsite.

■ NEW AUTO ADJUST ANTI-TWO BLOCK

Innovative, rugged and compact anti-two block design automatically adjusts to boom angle. Minimizes hook-to-boom tip height and is less prone to damage.

■ NEW BOOM TIP WORKLIGHT

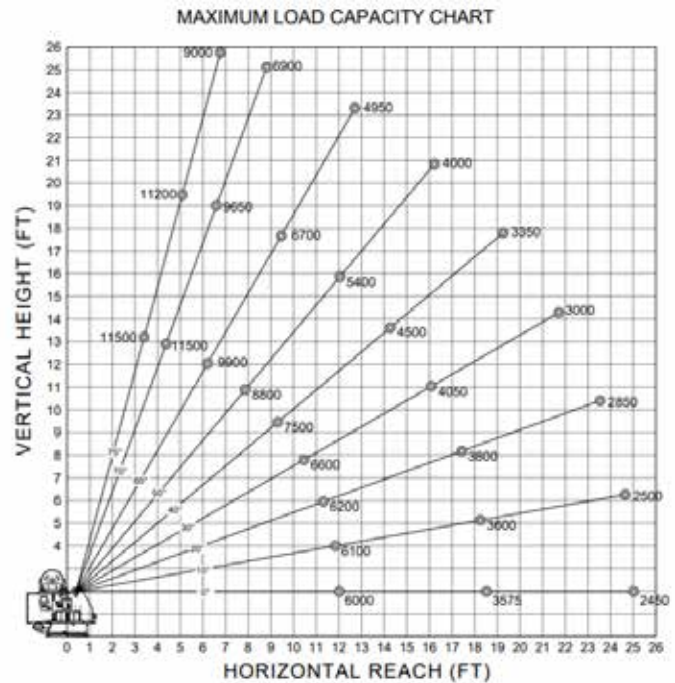
Optional worklight that automatically adjusts to the boom angle so you can

The Venturo HT66KX with VLC™ controls features a maximum capacity of 11,500 lb. **Venturo's new Electronic Crane Control Management System** provides added safety and benefits for crane operators. Benefits include a standard, wireless, pistol-grip controller, overload protection which controls and prevents any type of overload, LCD Display Screen alerts, transmitter handle vibrations, green/yellow/red alert lights under boom, and corresponding lights on the receiver. The LCD display shows percentage of load, boom angle in degrees and percentage of total capacity during crane operation. The VLC™ system also provides vehicle stability and grade control.

SPECIFICATIONS

Lifting Capacities:	11,500 lbs
Crane Rating:	66,000 ft-lbs
Mounting Space:	17-1/2" x 17-1/2"
Stowed Height:	35-1/2"
Rope Diameter:	7/16" @ 100'
Line pull speed:	67 ft/min @ 12 GPM (Single-line) 33 ft/min @ 12 GPM
Max. Single-line:	5,750 lbs
Max. Double-line:	11,500 lbs
Rotation:	400°
Power Supply:	PTO & Pump Required
Requirements:	12 gpm @ 3,000 psi
Hydraulic Req:	40 gal. reservoir
Boom Elevation:	-8° to +75°
Controls:	VLC™ (Venturo Logic Controls) Standard Wireless Remote
Boom Extension:	12' - 18' - 25' Full Hydraulic
Hydraulic Req:	12 GPM with 40 gal. reservoir
Minimum Vehicle Class:	Class 8 (33,000+ lbs GVWR)

MAXIMUM LOAD CAPACITY CHART



VLC™ SYSTEM CONTROLS



Multiple Safety and Capacity Alerts

Green/Yellow/Red alert light located on the underside of the boom.

Overload/Stability Safety

The VLC system controls and prevents any type of overload on the crane and also provides stability and grade control.



Wireless Remote

The wireless remote, pistol-grip controller is a standard feature as part of the VLC™ system for ALL proportionally-controlled hydraulic Venturo service cranes.



FREIGHT NOT
INCLUDED IN
PRICE OF UNIT.
FREIGHT WILL
BE BILLED UPON
PURCHASE.