



ELECTRIC CRANES ET36KX



MAX. CAPACITY
6,000 LBS

CRANE RATING
36,000 FT-LBS

MAX. REACH
20 FT

MIN. GVWR
14,500 LBS

CONTROLS
ELECTRIC

FEATURES

■ FULL-HYDRAULIC EXTENSION

The standard boom length for the ET36KX is 20'.

■ POWERFUL DC ELECTRIC WINCH

The ET series winches combine a powerful permanent magnet DC motor with robust sealing with proven 3-stage, all metal geartrain. Permanent grease lubrication means years of trouble-free service.

■ MANUAL CRANE OVERRIDE

Each ET series crane gives the user the ability to operate and stow the crane if there is power loss through the remote.

6,000 LB CAPACITY AT 6 FT

The Ventura ET36KX is a 36,000 ft-lb electric-hydraulic service crane with a 6,000 lb maximum capacity at 6 ft. This larger crane gives operators the distance and strength they need for heavier loads at a short distance. This electric crane features full-hydraulic boom extension out to 20 ft.

SPECIFICATIONS

Lifting Capacities:	6,000 lbs
Crane Rating:	36,000 ft-lbs
Mounting Space:	16" x 16"
Stowed Height:	28-7/8"
Rope Diameter:	5/16" @ 80'
Line pull speed:	28 ft/min (Single-line) 14 ft/min (Double-line)
Max. Single-line:	3,000 lbs
Max. Double-line:	6,000 lbs
Rotation:	360° Continuous
Power Supply:	Electric 12V DC
Requirements:	12v DC Battery
Hydraulic Req:	Self-Contained w/ Power Unit
Boom Elevation:	-8° to +75°
Controls:	Electric On/Off Functions
Hydraulic Power:	Elevation/Rotation/Extension
Boom Extension:	10' - 16' - 20' Full Hydraulic
Minimum Vehicle Class:	Class 4 (14,500 lbs GVWR)

OPTIONS & ACCESSORIES

Mounting Pedestals/Boom Rests

36" pedestals for platform bodies and adjustable 18" - 26" boom rests for utility bodies.

Outrigger Packages

ET36KX requires rear outrigger packages that include either Manual or Hydraulic.

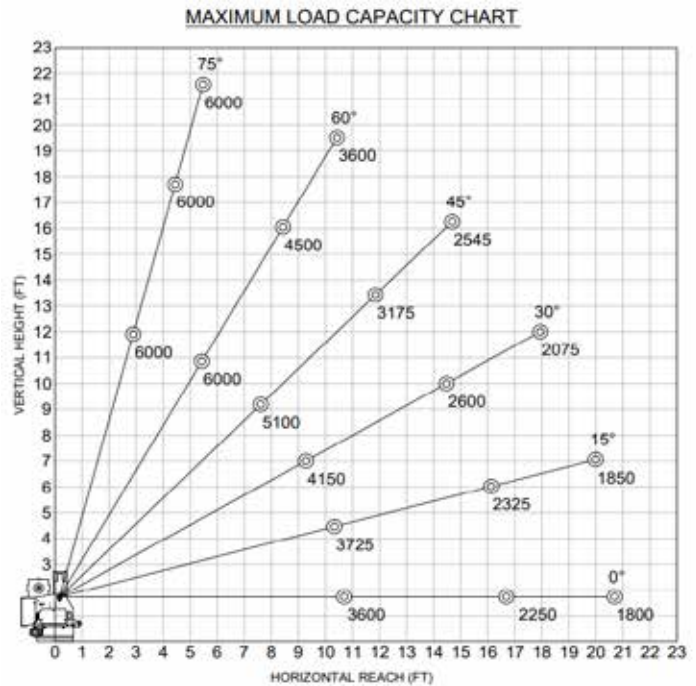
Wireless Remote

Wireless FM remote control with onboard diagnostic system and receiver.

Circuit Breaker Kit

A recommended 300 AMP Circuit Breaker Kit should be used for the ET36KX.

MAXIMUM LOAD CAPACITY CHART



NOTE: All Venturo service cranes meet ANSI B30.5 and OSHA 1910.180 specifications. Specifications subject to change without notice. Copyright © 2019 Venco Venturo Industries LLC. All Rights Reserved.



ELECTRIC CRANES ET30KXX



MAX. CAPACITY
5,000 LBS

CRANE RATING
30,000 FT-LBS

MAX. REACH
20 FT

MIN. GVWR
11,000 LBS

CONTROLS
ELECTRIC

FEATURES

■ FULL-HYDRAULIC EXTENSION

The standard boom length for the ET30KXX is 20'.

■ POWERFUL DC ELECTRIC WINCH

The ET series winches combine a powerful permanent magnet DC motor with robust sealing with proven 3-stage, all metal geartrain. Permanent grease lubrication means years of trouble-free service.

■ MANUAL CRANE OVERRIDE

Each ET series crane gives the user the ability to operate and stow the crane if there is power loss through the remote.

5,000 LB CAPACITY AT 6 FT

The Ventura ET30KXX is a 30,000 ft-lb electric-hydraulic service crane with a 5,000 lb maximum capacity at 6 ft. This larger crane gives operators the distance and strength they need for heavier loads at a short distance. The ET30KXX includes powered, full-hydraulic extension out to 20 ft.

SPECIFICATIONS

Lifting Capacities:	5,000 lbs
Crane Rating:	30,000 ft-lbs
Mounting Space:	16" x 16"
Stowed Height:	28-7/8"
Rope Diameter:	5/16" @ 80'
Line pull speed:	28 ft/min (Single-line) 11 ft/min (Double-line)
Max. Single-line:	2,500 lbs
Max. Double-line:	5,000 lbs
Rotation:	360° Continuous
Power Supply:	Electric 12V DC
Requirements:	12v DC Battery
Hydraulic Req:	Self-Contained w/ Power Unit
Boom Elevation:	-8° to +75°
Controls:	Electric On/Off Functions
Hydraulic Power:	Elevation/Rotation/Extension
Boom Extension:	10' - 16' - 20' Full Hydraulic
Minimum Vehicle Class:	Class 3 (11,000 lbs GVWR)

OPTIONS & ACCESSORIES

Mounting Pedestals/Boom Rests

36" pedestals for platform bodies and adjustable 18" - 26" boom rests for utility bodies.

Outrigger Packages

ET30KX requires rear outrigger packages that include either Manual or Hydraulic.

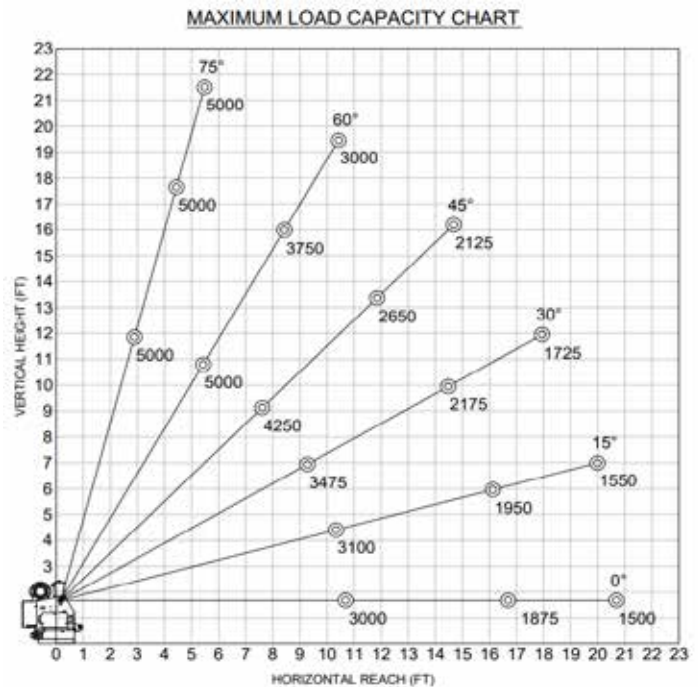
Wireless Remote

Wireless FM remote control with onboard diagnostic system and receiver.

Circuit Breaker Kit

A recommended 300 AMP Circuit Breaker Kit should be used for the ET30KX.

MAXIMUM LOAD CAPACITY CHART



NOTE: All Venturo service cranes meet ANSI B30.5 and OSHA 1910.180 specifications. Specifications subject to change without notice. Copyright © 2019 Venco Venturo Industries LLC. All Rights Reserved.



ELECTRIC CRANES ET25KXX



MAX. CAPACITY
5,000 LBS

CRANE RATING
25,000 FT-LBS

MAX. REACH
20 FT

MIN. GVWR
10,500 LBS

CONTROLS
ELECTRIC

FEATURES

■ FULL-HYDRAULIC EXTENSION

The standard boom length for the ET25KXX is 20'.

■ POWERFUL DC ELECTRIC WINCH

The ET series winches combine a powerful permanent magnet DC motor with robust sealing with proven 3-stage, all metal geartrain. Permanent grease lubrication means years of trouble-free service.

■ MANUAL CRANE OVERRIDE

Each ET series crane gives the user the ability to operate and stow the crane if there is power loss through the remote.

5,000 LB CAPACITY AT 6 FT

The Venturo ET25KXX is a 25,000 ft-lb electric-hydraulic service crane with a 5,000 lb maximum capacity at 5 ft. This larger crane gives operators the distance and strength they need for heavier loads at a short distance. The ET25KXX includes powered, full-hydraulic extension out to 20 ft.

SPECIFICATIONS

Lifting Capacities:	5,000 lbs
Crane Rating:	25,000 ft-lbs
Mounting Space:	16" x 16"
Stowed Height:	28-7/8"
Rope Diameter:	5/16" @ 80'
Line pull speed:	28 ft/min (Single-line) 11 ft/min (Double-line)
Max. Single-line:	2,500 lbs
Max. Double-line:	5,000 lbs
Rotation:	360° Continuous
Power Supply:	Electric 12V DC
Requirements:	12v DC Battery
Hydraulic Req:	Self-Contained w/ Power Unit
Boom Elevation:	-8° to +75°
Controls:	Electric On/Off Functions
Hydraulic Power:	Elevation/Rotation/Extension
Boom Extension:	10' - 16' - 20' Full Hydraulic
Minimum Vehicle Class:	Class 3 (10,500 lbs GVWR)

OPTIONS & ACCESSORIES

Mounting Pedestals/Boom Rests

36" pedestals for platform bodies and adjustable 18" - 26" boom rests for utility bodies.

Outrigger Packages

ET25KX requires rear outrigger packages that include either Manual or Hydraulic.

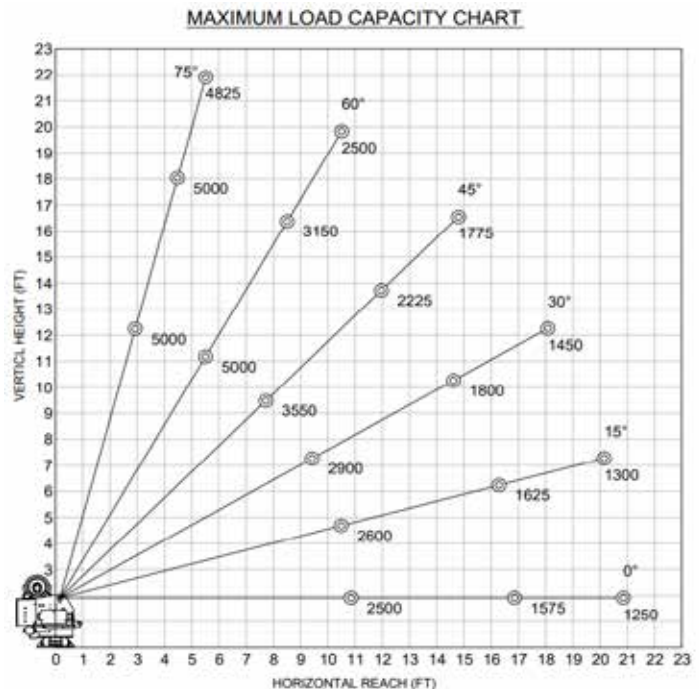
Wireless Remote

Wireless FM remote control with onboard diagnostic system and receiver.

Circuit Breaker Kit

A recommended 300 AMP Circuit Breaker Kit should be used for the ET25KX.

MAXIMUM LOAD CAPACITY CHART



NOTE: All Venturo service cranes meet ANSI B30.5 and OSHA 1910.180 specifications. Specifications subject to change without notice. Copyright © 2019 Venco Venturo Industries LLC. All Rights Reserved.



ELECTRIC CRANES ET18KXX-20



MAX. CAPACITY
4,500 LBS

CRANE RATING
18,000 FT-LBS

MAX. REACH
20 FT

MIN. GVWR
10,500 LBS

CONTROLS
ELECTRIC

FEATURES

- **FULL-POWERED BOOM EXTENSION**
The standard boom length for the ET18KXX-20 is 20'.
- **POWERFUL DC ELECTRIC WINCH**
The ET series winches combine a powerful permanent magnet DC motor with robust sealing with proven 3-stage, all metal geartrain. Permanent grease lubrication means years of trouble-free service.
- **MANUAL CRANE OVERRIDE**
Each ET series crane gives the user the ability to operate and stow the crane if there is power loss through the remote.

TRIED AND TRUE.

The Ventura ET18KXX-20 is an 18,000 ft-lb electric-hydraulic service crane with a 4,500 lb maximum capacity. This crane gives operators the distance and strength they need for lighter crane service bodies. Large enough to pull heavy equipment, docks or any other loads at a shorter distance with a large capacity, the crane is also small enough for a mid-size GVWR truck. The ET18KXX-20 also features optional proportional controls for operators to manage the speed of the hydraulic functions of the crane.

SPECIFICATIONS

Lifting Capacities:	4,500 lbs
Crane Rating:	18,000 ft-lbs
Mounting Space:	14" x 14"
Stowed Height:	26-5/8"
Rope Diameter:	5/16" @ 80'
Line pull speed:	25 ft/min (Single-line) 4 ft/min (Double-line)
Max. Single-line:	2,250 lbs
Max. Double-line:	4,500 lbs
Rotation:	360° Continuous
Power Supply:	Electric 12V DC
Requirements:	12v DC Battery
Hydraulic Req:	Self-Contained w/ Power Unit
Boom Elevation:	-8° to +75°
Controls:	12V DC Electric-Hydraulic
Controls: (Option)	Proportional Controls
Hydraulic Power:	Elevation/Rotation/Extension
Boom Extension:	Power: 10' - 16' - 20'
Minimum Vehicle Class:	Class 3 (10,500 lbs GVWR)

OPTIONS & ACCESSORIES

Mounting Pedestals/Boom Rests

36" pedestals for platform bodies and adjustable 18" - 26" boom rests for utility bodies.

Outrigger Packages

ET18KXX-20 requires rear outrigger packages that include either Manual or Hydraulic.

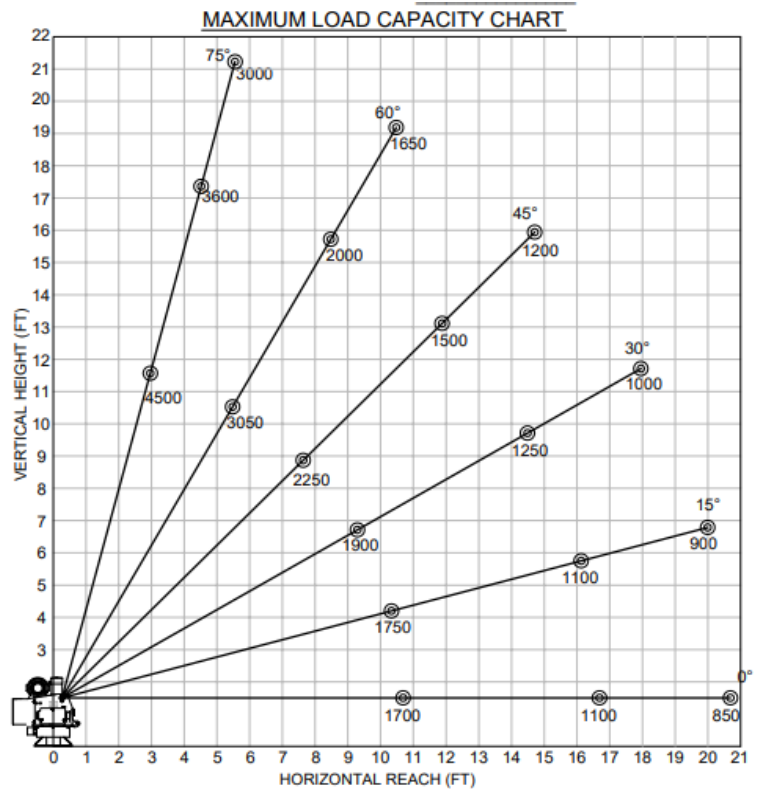
Proportional Controls

The ET18KXX-20 features optional proportional controls to allow the operator to manage loads.

Circuit Breaker Kit

A recommended 250 AMP Circuit Breaker Kit should be used for the ET18KXX-20.

MAXIMUM LOAD CAPACITY CHART





ELECTRIC CRANES ET18KX



MAX. CAPACITY
4,500 LBS

CRANE RATING
18,000 FT-LBS

MAX. REACH
16 FT

MIN. GVWR
10,500 LBS

CONTROLS
ELECTRIC

FEATURES

- **HYDRAULIC/MANUAL EXTENSION**
The standard boom length for the ET18KX is 16'.
- **POWERFUL DC ELECTRIC WINCH**
The ET series winches combine a powerful permanent magnet DC motor with robust sealing with proven 3-stage, all metal geartrain. Permanent grease lubrication means years of trouble-free service.
- **MANUAL CRANE OVERRIDE**
Each ET series crane gives the user the ability to operate and stow the crane if there is power loss through the remote.

TRIED AND TRUE.

The Venturo ET18KX is an 18,000 ft-lb electric-hydraulic service crane with a 4,500 lb maximum capacity. This crane gives operators the distance and strength they need for lighter crane service bodies. Large enough to pull heavy equipment, docks or any other loads at a shorter distance with a large capacity, the crane is also small enough for a mid-size GVWR truck.

SPECIFICATIONS

Lifting Capacities:	4,500 lbs
Crane Rating:	18,000 ft-lbs
Mounting Space:	14" x 14"
Stowed Height:	26-5/8"
Rope Diameter:	5/16" @ 80'
Line pull speed:	25 ft/min (Single-line) 4 ft/min (Double-line)
Max. Single-line:	2,250 lbs
Max. Double-line:	4,500 lbs
Rotation:	360° Continuous
Power Supply:	Electric 12V DC
Requirements:	12v DC Battery
Hydraulic Req:	Self-Contained w/ Power Unit
Boom Elevation:	-8° to +75°
Controls:	Electric On/Off Functions
Hydraulic Power:	Elevation/Rotation/Extension
Boom Extension:	Power: 8' - 12' Manual: 12' - 16'
Minimum Vehicle Class:	Class 3 (10,500 lbs GVWR)

OPTIONS & ACCESSORIES

Mounting Pedestals/Boom Rests

36" pedestals for platform bodies and adjustable 18" - 26" boom rests for utility bodies.

Outrigger Packages

ET18KX requires rear outrigger packages that include either Manual or Hydraulic.

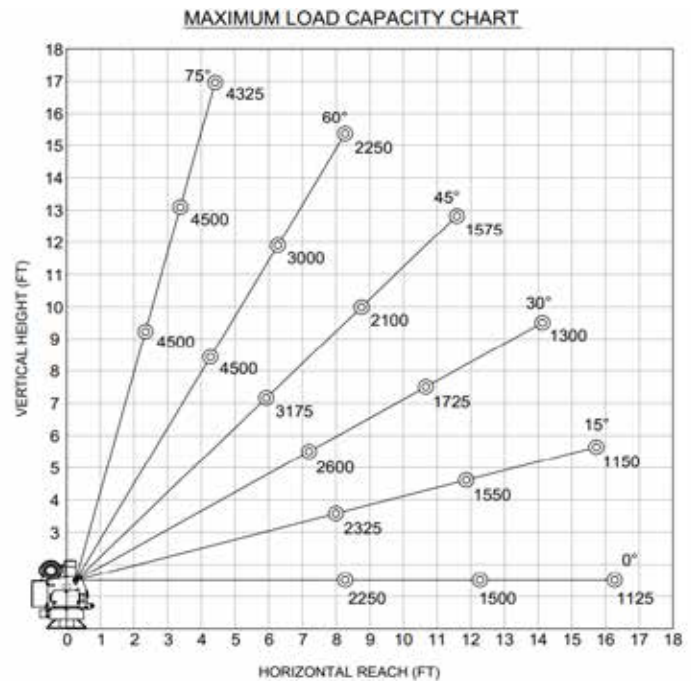
Wireless Remote

Wireless FM remote control with onboard diagnostic system and receiver.

Circuit Breaker Kit

A recommended 250 AMP Circuit Breaker Kit should be used for the ET18KX.

MAXIMUM LOAD CAPACITY CHART



NOTE: All Venturo service cranes meet ANSI B30.5 and OSHA 1910.180 specifications. Specifications subject to change without notice. Copyright © 2019 Venco Venturo Industries LLC. All Rights Reserved.



ELECTRIC CRANES

ET16KXX-20



MAX. CAPACITY
4,000 LBS

CRANE RATING
16,000 FT-LBS

MAX. REACH
20 FT

MIN. GVWR
10,500 LBS

CONTROLS
ELECTRIC

FEATURES

■ FULLY-POWERED BOOM EXTENSION

The ET16KXX-20 comes with a fully-powered 20 FT boom extension.

■ POWERFUL DC ELECTRIC WINCH

The ET series winches combine a powerful permanent magnet DC motor with robust sealing with proven 3-stage, all metal geartrain. Permanent grease lubrication means years of trouble-free service.

■ MANUAL CRANE OVERRIDE

Each ET series crane gives the user the ability to operate and stow the crane if there is power loss through the remote.

THE BEST CRANE FOR A REINFORCED SERVICE BODY.

The Ventura ET16KXX-20 is a 16,000 ft-lb electric-hydraulic service crane with a 4,000 lb maximum capacity. This crane allows operators a crane application without the need for a heavy crane service body. A reinforced crane compartment on a standard utility body provides operators the strength they need on a standard service truck. The ET16KXX-20 also features optional proportional control for variable-speed loads.

SPECIFICATIONS

Lifting Capacities:	4,000 lbs (800 lbs @ 20 FT)
Crane Rating:	16,000 ft-lbs
Mounting Space:	14" x 14"
Stowed Height:	26-5/8"
Rope Diameter:	5/16" @ 80'
Line pull speed:	25 ft/min (Single-line) 4 ft/min (Double-line)
Max. Single-line:	2,000 lbs
Max. Double-line:	4,000 lbs
Rotation:	360° Continuous
Power Supply:	Electric 12V DC
Requirements:	12v DC Battery
Hydraulic Req:	Self-Contained w/ Power Unit
Boom Elevation:	-8° to +75°
Controls:	12V Electric
Controls: (Option)	Proportional Control
Hydraulic Power:	Elevation/Rotation/Extension
Boom Extension:	Power: 10' - 16' - 20'
Minimum Vehicle Class:	Class 3 (10,500 lbs GVWR)

OPTIONS & ACCESSORIES

Mounting Pedestals/Boom Rests

36" pedestals for platform bodies and adjustable 18" - 26" boom rests for utility bodies.

Outrigger Packages

ET16KXX-20 requires rear outrigger packages that include either Manual or Hydraulic.

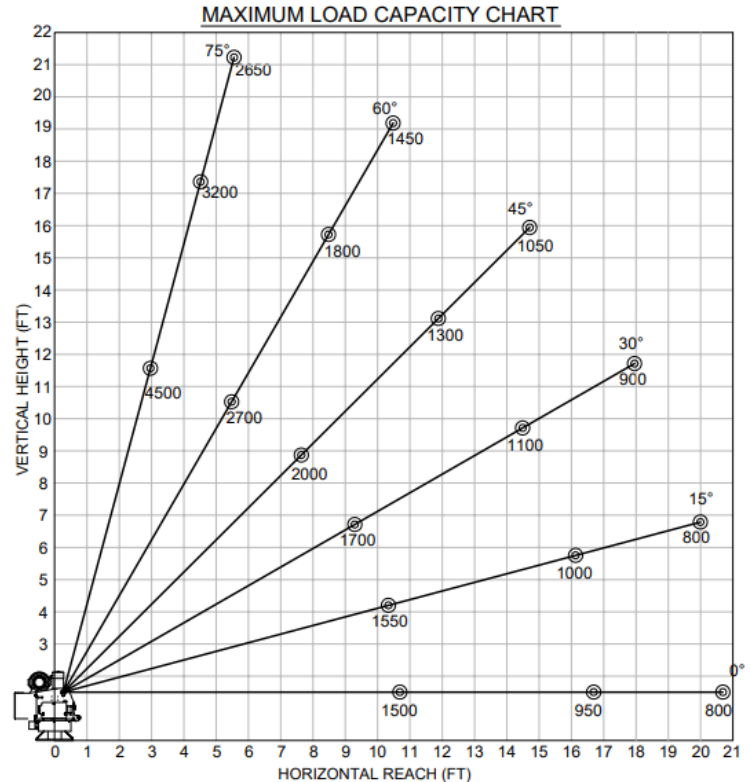
Proportional Control

The ET16KX has the capability for proportional control so operators will have full control of loads.

Circuit Breaker Kit

A recommended 250 AMP Circuit Breaker Kit should be used for the ET16KXX-20.

MAXIMUM LOAD CAPACITY CHART



NOTE: All Venturo service cranes meet ANSI B30.5 and OSHA 1910.180 specifications. Specifications subject to change without notice. Copyright © 2019 Venco Venturo Industries LLC. All Rights Reserved.



ELECTRIC CRANES

ET16KX



MAX. CAPACITY
4,000 LBS

CRANE RATING
16,000 FT-LBS

MAX. REACH
16 FT

MIN. GVWR
10,500 LBS

CONTROLS
ELECTRIC

FEATURES

■ HYDRAULIC/MANUAL EXTENSION

The standard boom length for the ET16KX is 16'.

■ POWERFUL DC ELECTRIC WINCH

The ET series winches combine a powerful permanent magnet DC motor with robust sealing with proven 3-stage, all metal geartrain. Permanent grease lubrication means years of trouble-free service.

■ MANUAL CRANE OVERRIDE

Each ET series crane gives the user the ability to operate and stow the crane if there is power loss through the remote.

THE BEST CRANE FOR A REINFORCED SERVICE BODY.

The Ventura ET16KX is a 16,000 ft-lb electric-hydraulic service crane with a 4,000 lb maximum capacity. This crane allows operators a crane application without the need for a heavy crane service body. A reinforced crane compartment on a standard utility body provides operators the strength they need on a standard service truck.

SPECIFICATIONS

Lifting Capacities:	4,000 lbs
Crane Rating:	16,000 ft-lbs
Mounting Space:	14" x 14"
Stowed Height:	26-5/8"
Rope Diameter:	5/16" @ 80'
Line pull speed:	25 ft/min (Single-line) 4 ft/min (Double-line)
Max. Single-line:	2,250 lbs
Max. Double-line:	4,500 lbs
Rotation:	360° Continuous
Power Supply:	Electric 12V DC
Requirements:	12v DC Battery
Hydraulic Req:	Self-Contained w/ Power Unit
Boom Elevation:	-8° to +75°
Controls:	Electric On/Off Functions
Hydraulic Power:	Elevation/Rotation/Extension
Boom Extension:	Power: 8' - 12' Manual: 12' - 16'
Minimum Vehicle Class:	Class 3 (10,500 lbs GVWR)

OPTIONS & ACCESSORIES

Mounting Pedestals/Boom Rests

36" pedestals for platform bodies and adjustable 18" - 26" boom rests for utility bodies.

Outrigger Packages

ET16KX requires rear outrigger packages that include either Manual or Hydraulic.

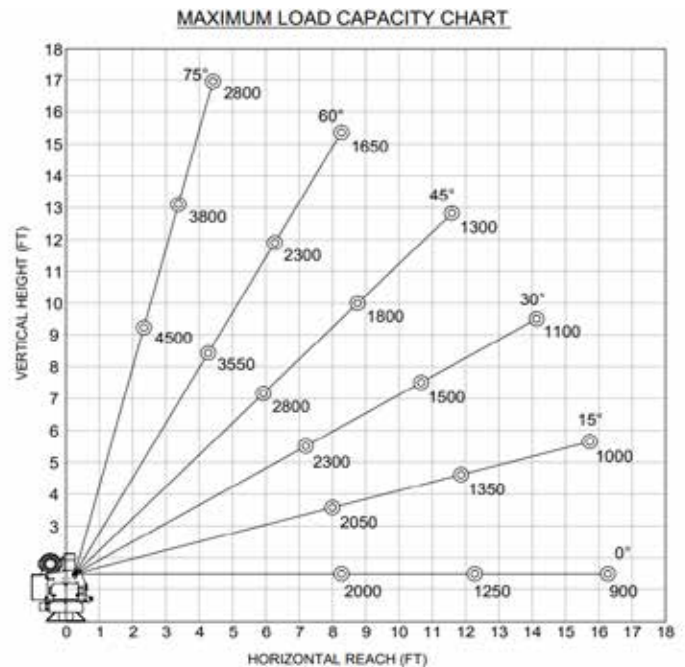
Wireless Remote

Wireless FM remote control with onboard diagnostic system and receiver.

Circuit Breaker Kit

A recommended 250 AMP Circuit Breaker Kit should be used for the ET16KX.

MAXIMUM LOAD CAPACITY CHART



NOTE: All Venturo service cranes meet ANSI B30.5 and OSHA 1910.180 specifications. Specifications subject to change without notice. Copyright © 2019 Venco Venturo Industries LLC. All Rights Reserved.



ELECTRIC CRANES ET12KXP



MAX. CAPACITY
3,500 LBS

CRANE RATING
12,000 FT-LBS

MAX. REACH
16 FT

MIN. GVWR
8,800 LBS

CONTROLS
PROPORTIONAL
ELECTRIC CONTROL

FEATURES

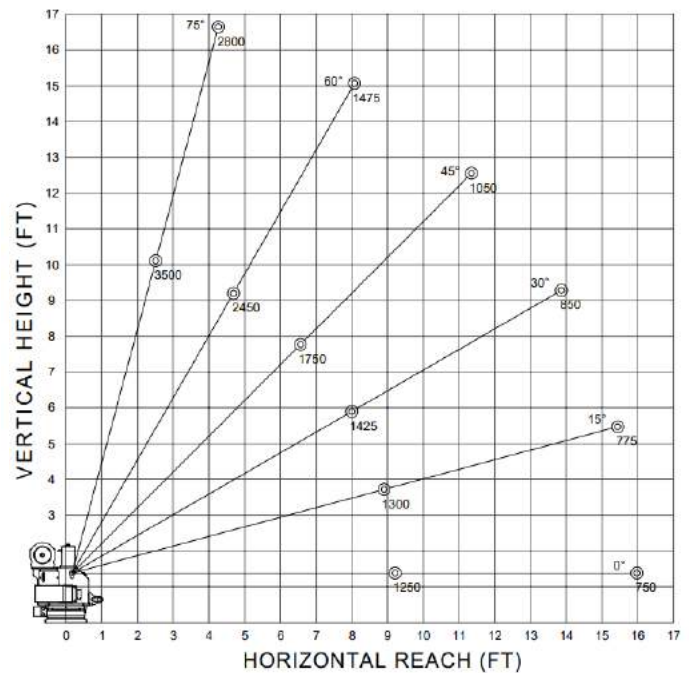
- **PROPORTIONAL CONTROLS**
Precise load control of hydraulic functions which include rotation, elevation and extension.
- **NEW AUTO ADJUST ANTI-TWO BLOCK**
Innovative, rugged and compact anti-two block design automatically adjusts to boom angle. Minimizes hook-to-boom tip height and is less prone to damage.
- **FULL-HYDRAULIC BOOM EXTENSION**
No manual extensions! 9'-16' one-piece boom of hexagonal construction minimizes weight and maximizes reach and sectional stability

The ET12KXP service crane is a versatile application that is neither too large nor too small for a majority of lifting jobs. This crane has been utilized heavily in municipal/public works industry lifting anything from service equipment to fire hydrants throughout the United States. Featuring a 12,000 FT-LB crane rating and a 3,500 LB maximum capacity, the ET12KXP can be installed on trucks with a minimum 8,800 LBS GVWR. This new crane features proportional controls, single-stage, full-hydraulic boom extension, lighter-weight, easy access housing and provides consistent and uninterrupted positive and ground paths with unlimited, continuous rotation while electrical components perform better and last longer.

SPECIFICATIONS

Lifting Capacities:	3,500 lbs
Crane Rating:	12,000 ft-lbs
Mounting Space:	14" x 14"
Stowed Height:	26-3/4"
Rope Diameter:	1/4" @ 65'
Line pull speed:	17 ft/min (Single-line) 10 ft/min (Double-line)
Max. Single-line:	1,750 lbs
Max. Double-line:	3,500 lbs
Rotation:	360° Continuous
Power Supply:	Electric 12V DC
Requirements:	#2 x 25 FT Battery Cables
Max. Reach:	16 FT
Boom Elevation:	-5° to +75°
Controls:	Electric 12V DC Proportional
Boom Extension:	9' - 16' Hydraulic
Weight:	700 LBS
Minimum Vehicle Class:	Class 2 (8,800 lbs GVWR)

MAXIMUM LOAD CAPACITY CHART



CRANE ACCESSORIES



Proportional, Wireless Controller

Precise load movements and proportional control of elevation, rotation and extension functions.

Boom Rest

Designed and engineered for Venturo service cranes, booms sit nicely in the harness with latch to stow hook during transit.



Boom Tip Worklight

6" x 5" ultra bright, rectangular LED clear flood light has a die-cast aluminum body and impact-resistant polycarbonate lens. Features 15-high intensity LEDs that spread over a 207 meter area.





ELECTRIC CRANES ET12KX-15



MAX. CAPACITY
3,500 LBS

CRANE RATING
12,000 FT-LBS

MAX. REACH
15 FT

MIN. GVWR
8,800 LBS

CONTROLS
ELECTRIC -
HYDRAULIC

FEATURES

■ HYDRAULIC/MANUAL EXTENSION

The standard boom length for the ET12KX is 15'.

■ POWERFUL DC ELECTRIC WINCH

The ET series winches combine a powerful permanent magnet DC motor with robust sealing with proven 3-stage, all metal geartrain. Permanent grease lubrication means years of trouble-free service.

■ MANUAL CRANE OVERRIDE

Each ET series crane gives the user the ability to operate and stow the crane if there is power loss through the remote.

SETTING THE STANDARD FOR ELECTRIC SERVICE CRANES.

The Venturo ET12KX-15 service crane is a versatile application that is neither too large or small for a majority of lifting jobs. This crane has been utilized heavily in municipal/public works lifting anything from service equipment to fire hydrants throughout the United States. With a 12,000 ft-lb crane rating and a 3,500 lb maximum capacity, the ET12KX-15 can be installed on trucks with a minimum 8,800 lbs GVWR.

SPECIFICATIONS

Lifting Capacities:	3,500 lbs
Crane Rating:	12,000 ft-lbs
Mounting Space:	14" x 14"
Stowed Height:	26-5/8"
Rope Diameter:	1/4" @ 65'
Line pull speed:	25 ft/min (Single-line) 4 ft/min (Double-line)
Max. Single-line:	1,750 lbs
Max. Double-line:	3,500 lbs
Rotation:	360° Continuous
Power Supply:	Electric 12V DC
Requirements:	12v DC Battery
Hydraulic Req:	Self-Contained w/ Power Unit
Boom Elevation:	-8° to +75°
Controls:	12V DC Non-Proportional
Venturo Body	HT25 Crane Service Body
ET12KX Extension:	Power: 7' - 11' Manual: 11' - 15'
Minimum Vehicle Class:	Class 2 (8,800 lbs GVWR)

OPTIONS & ACCESSORIES

Mounting Pedestals/Boom Rests

21" and 36" pedestals for platform bodies and adjustable 13" - 19" boom rests for utility bodies.

Outrigger Packages

ET12KX requires rear outrigger packages that include either Manual-Out/Manual-Down.

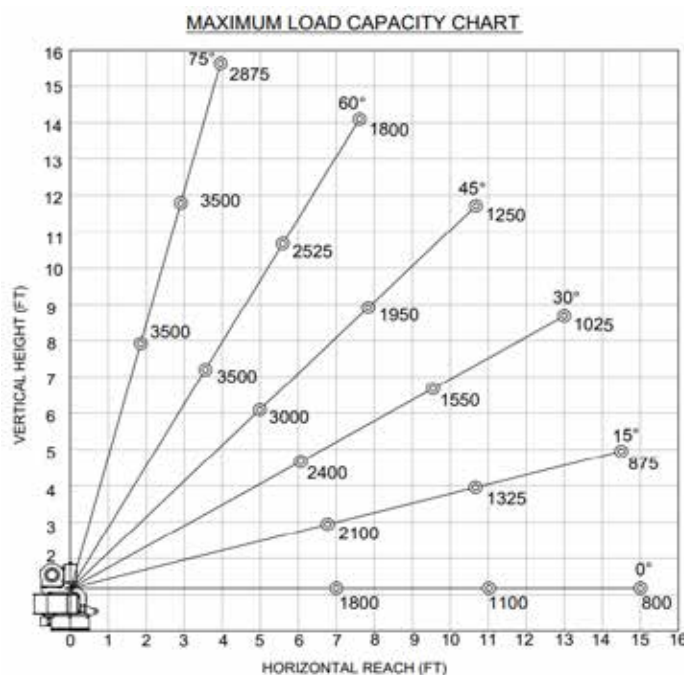
Wireless Remote

Wireless FM remote control with onboard diagnostic system and receiver.

Proportional Controls

Speed up and slow down the hydraulic functions of the ET12KX with variable speed controls.

MAXIMUM LOAD CAPACITY CHART



NOTE: All Venturo service cranes meet ANSI B30.5 and OSHA 1910.180 specifications. Specifications subject to change without notice. Copyright © 2019 Venco Venturo Industries LLC. All Rights Reserved.



Venco Venturo Industries LLC
 12110 Best Place | Cincinnati, Ohio 45241
 800-226-2238 | 513-772-8448 Local
info@venturo.com | www.venturo.com

ELECTRIC CRANES ET8KX



MAX. CAPACITY
3,200 LBS

CRANE RATING
8,000 FT-LBS

MAX. REACH
14 FT

MIN. GVWR
8,000 LBS

CONTROLS
ELECTRIC

FEATURES

■ HYDRAULIC/MANUAL EXTENSION

The standard boom length for the ET8KX is 14'.

■ POWERFUL DC ELECTRIC WINCH

The ET series winches combine a powerful permanent magnet DC motor with robust sealing with proven 3-stage, all metal geartrain. Permanent grease lubrication means years of trouble-free service.

■ MANUAL CRANE OVERRIDE

Each ET series crane gives the user the ability to operate and stow the crane if there is power loss through the remote.

VARIATIONS WITH A 3,200 LB CAPACITY.

The Venturo ET8KX is an 8,000 ft-lb electric-hydraulic service crane with a 3,200 lb lifting capacity featuring a 12V DC electric winch, electric rotation, hydraulic boom elevation and extension. The ET8 comes in two variations; ET8K includes full manual boom extension and the ET8KX includes hydraulic/manual boom extension. The ET8KX also has optional Proportional Controls for variable speed hydraulic functions.

SPECIFICATIONS

Lifting Capacities:	3,200 lbs
Crane Rating:	8,000 ft-lbs
Mounting Space:	14" x 14"
Stowed Height:	26-5/8"
Rope Diameter:	1/4" @ 65'
Line pull speed:	17 ft/min (Single-line) 7 ft/min (Double-line)
Max. Single-line:	1,600 lbs
Max. Double-line:	3,200 lbs
Rotation:	360° Continuous
Power Supply:	Electric 12V DC
Requirements:	12v DC Battery
Hydraulic Req:	Self-Contained w/ Power Unit
Boom Elevation:	-8° to +75°
Controls 1:	Electric 12V DC On/Off Function
Controls 2:	Proportional Control (ET8KX)
ET8K Extension:	Manual: 6' - 10' Manual: 10' - 14'
ET8KX Extension:	Power: 6' - 10' Manual: 10' - 14'
Minimum Vehicle Class:	Class 2 (8,000 lbs GVWR)

OPTIONS & ACCESSORIES

Mounting Pedestals/Boom Rests

21" and 36" pedestals for platform bodies and adjustable 13" - 19" boom rests for utility bodies.

Outrigger Packages

ET8KX requires rear outrigger packages that include either Manual-Out/Manual-Down.

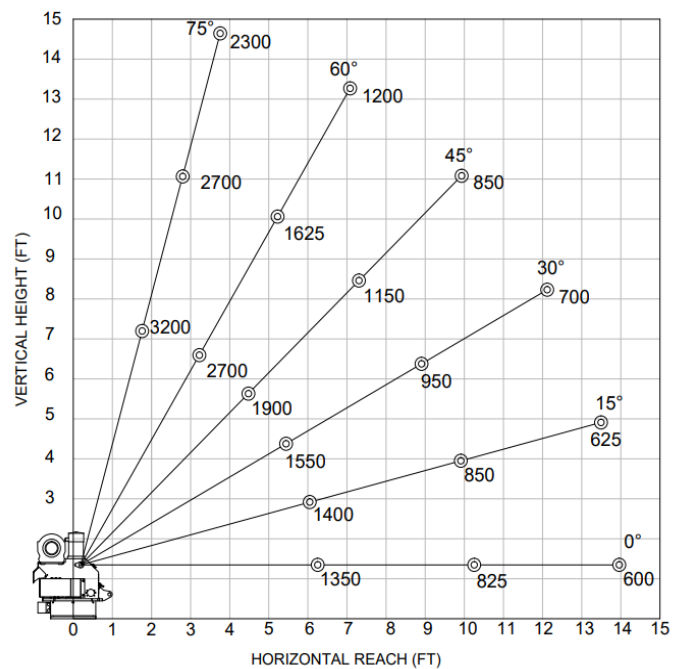
Proportional Controls

Variable speeds of hydraulic functions for Rotation, Elevation & Extension on ET8KX.

Circuit Breaker Kit

A recommended 250 AMP Circuit Breaker Kit should be used for the ET8KX.

MAXIMUM LOAD CAPACITY CHART



NOTE: All Venturo service cranes meet ANSI B30.5 and OSHA 1910.180 specifications. Specifications subject to change without notice. Copyright © 2019 Venco Venturo Industries LLC. All Rights Reserved.

ELECTRIC CRANES ET6K



MAX. CAPACITY
2,000 LBS

CRANE RATING
6,000 FT-LBS

MAX. REACH
10 FT

MIN. GVWR
8,000 LBS

CONTROLS
ELECTRIC

FEATURES

■ MANUAL EXTENSION

The standard boom length for the ET6K is 10'.

■ POWERFUL DC ELECTRIC WINCH

The ET series winches combine a powerful permanent magnet DC motor with robust sealing with proven 3-stage, all metal geartrain. Permanent grease lubrication means years of trouble-free service.

■ MANUAL CRANE OVERRIDE

Each ET series crane gives the user the ability to operate and stow the crane if there is power loss through the remote.

LOW-COST, LOW-WEIGHT, OPERATOR CERTIFICATION EXEMPT.

The ET6K service crane is a light-weight, cost-effective choice for a variety of industries and general service applications on any truck with a GVWR of 8,000 lbs or less. The ET6K features 2,000 lbs of maximum capacity and a 6,000 ft-lb crane rating.

SPECIFICATIONS

Lifting Capacities:	2,000 lbs
Crane Rating:	6,000 ft-lbs
Mounting Space:	10-1/2" x 10-1/2"
Stowed Height:	24-1/4"
Rope Diameter:	3/16" @ 50'
Line pull speed:	30 ft/min (Single-line) 18 ft/min (Double-line)
Max. Single-line:	1,000 lbs
Max. Double-line:	2,000 lbs
Rotation:	360° Continuous
Power Supply:	Electric 12V DC
Requirements:	12v DC Battery
Hydraulic Req:	Self-Contained w/ Power Unit
Boom Elevation:	-8° to +75°
Controls:	Electric 12V DC On/Off Function
Notes:	OSHA Certification Exempt
Boom Extension:	Manual: 6' - 10'
Minimum Vehicle Class:	Class 2 (8,000 lbs GVWR)

OPTIONS & ACCESSORIES

Mounting Pedestals/Boom Rests

21" and 36" pedestals for platform bodies and adjustable 13" - 19" boom rests for utility bodies.

Outrigger Packages

ET6K requires rear outrigger packages that include either Manual-Out/Manual-Down.

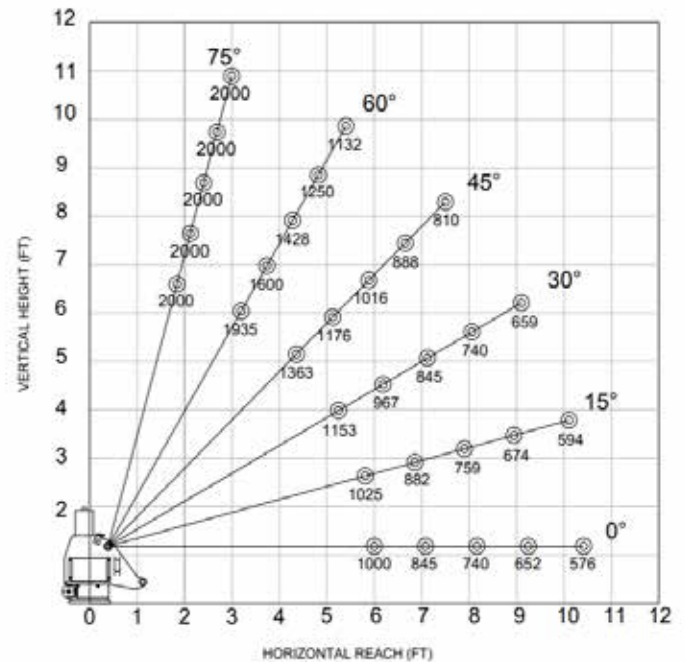
Wireless Remote

Wireless FM remote control with onboard diagnostic system and receiver.

Circuit Breaker Kit

A recommended 250 AMP Circuit Breaker Kit should be used for the ET6K.

MAXIMUM LOAD CAPACITY CHART



NOTE: All Venturo service cranes meet ANSI B30.5 and OSHA 1910.180 specifications. Specifications subject to change without notice. Copyright © 2019 Venco Venturo Industries LLC. All Rights Reserved.



ELECTRIC CRANES

DT7K



MAX. CAPACITY
2,200 LBS

CRANE RATING
7,000 FT-LBS

MAX. REACH
10 FT

MIN. GVWR
8,000 LBS

CONTROLS
ELECTRIC

FEATURES

■ MANUAL EXTENSION

The standard boom length for the DT7K is 10'.

■ POWERFUL DC ELECTRIC WINCH

The ET series winches combine a powerful permanent magnet DC motor with robust sealing with proven 3-stage, all metal geartrain. Permanent grease lubrication means years of trouble-free service.

■ LIGHT-WEIGHT, PAYLOAD SAVINGS

Increase the payload of your service truck with this low-weight crane while still gaining over 2,000 lbs of capacity.

A SIMPLE SOLUTION.

The DT7K is a 7,000 ft-lb crane with 2,200 lbs of lifting capacity. This crane is a light-weight, cost-effective alternative to our full-featured ET series cranes. The DT7K features an electric winch but includes manual rotation, elevation and boom extension. Boom elevation is 3-pin with a multiple pin-boom extension.

SPECIFICATIONS

Lifting Capacities:	2,200 lbs
Crane Rating:	7,000 ft-lbs
Mounting Space:	12" x 12"
Stowed Height:	31"
Rope Diameter:	3/16" @ 50'
Line pull speed:	25 ft/min (Single-line) 7 ft/min (Double-line)
Max. Single-line:	1,100 lbs
Max. Double-line:	2,200 lbs
Rotation:	360° Continuous
Power Supply:	Electric 12V DC
Requirements:	12v DC Battery
Hydraulic Req:	No Hydraulics
Boom Elevation:	0° to +75°
Controls:	12V DC On/Off Winch
Boom Elevation:	3-Pin, Multiple Degree
Boom Extension:	Manual: 6' - 10'
Minimum Vehicle Class:	Class 2 (8,000 lbs GVWR)

OPTIONS & ACCESSORIES

Mounting Pedestals

21" and 36" pedestals for platform bodies

Outrigger Packages

DT7K requires rear outrigger packages that include either Manual-Out/Manual-Down.

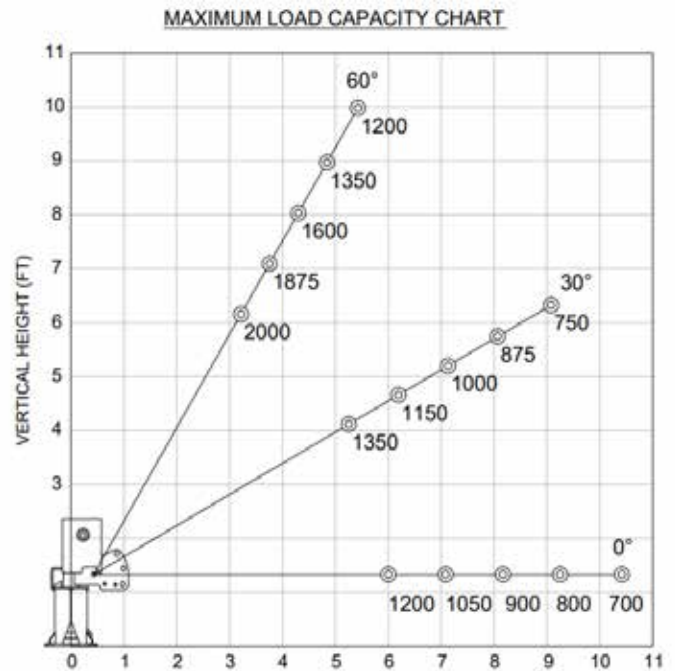
Standard Corded Remote

The DT7K includes a standard 15 ft corded controller.

Circuit Breaker Kit

A recommended 250 AMP Circuit Breaker Kit should be used for the DT7K.

MAXIMUM LOAD CAPACITY CHART



FREIGHT NOT
INCLUDED IN
PRICE OF UNIT.
FREIGHT WILL
BE BILLED UPON
PURCHASE.