



POWERFLEX 
AE GAS



Powerful, portable air and generator power with dual functionality

Mobile power when and where you need it. The versatile PowerFlex AE Gas offers the reliability and continuous air demand of a rotary screw compressor with the proven AC power of an integrated brushless generator for superior job site performance on or off the truck. The PowerFlex AE Gas is the ideal for general construction, monument engraving, service vehicles and roadside repairs.



SPECIFICATIONS	
CFM Rating	40 CFM
Air Pressure	150 PSI
Compressor Type	Rotary Screw
AC Generator	6.8 KW @ 60 Hz, 120/240 V
Engine Type	26.5 HP EFI Kohler®, Air Cooled
Drive System	Belt Driven
Fuel Type	Gas
Fuel Capacity	Integrated 12 Gal. or Plumb to Chassis

Powerflex, AE Unit Dimensions (In.): With Fittings: 47.6 L x 21.0 W x 30.9 H
Dry Weight (Lbs.): 675 with fuel tank, 630 without fuel tank

Product improvement is a continuing goal. Design and specifications are subject to change without notice or obligation.



POWERFLEX[™]

AE GAS

AIR COMPRESSOR

- 40 CFM Rotary Screw Encapsulated Air End
- Belt-Driven, clutched
- Lifetime Warranty on Air End
- Integrated Inlet
- 4 gallon air storage

GENERATOR

- 6.8 KW Continuous @ 60 HZ
- Brushless
- Smooth Wave for Minimal Distortion
- Auto-tensioned belt

COOLING SYSTEM

- Air-To-Oil Compressor Cooler
- Ambient Operating Conditions from -20°F to 110°F

REMOTE CONTROL PANEL

- Can Be Located in Convenient User Location
- Engine Start / Stop
- Engine Fault
- Compressor Fault
- Hour Meter

BATTERY

- 12V sealed lead acid

MAINTENANCE/ SERVICEABILITY

- Hinged Top and Removable Front Panel for Easy Access
- Spin On Air-Oil Separator Element for Easy Maintenance

CANOPY

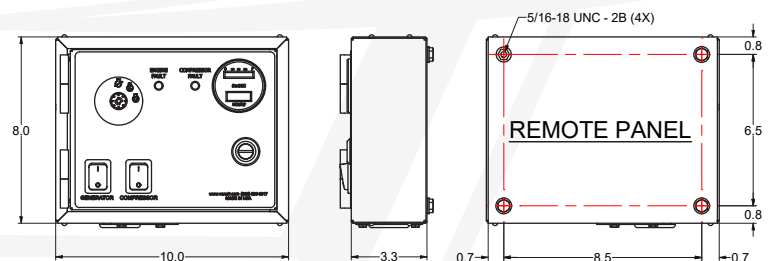
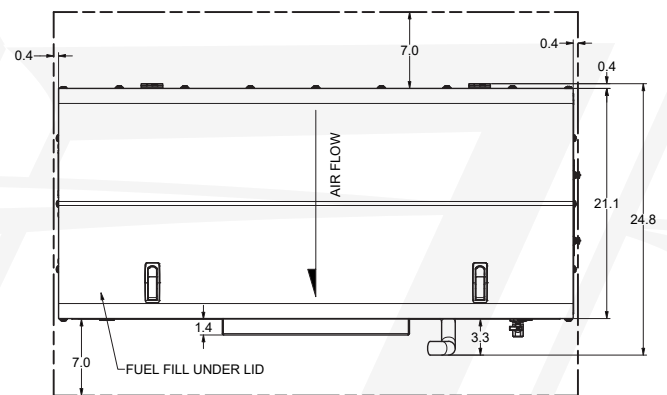
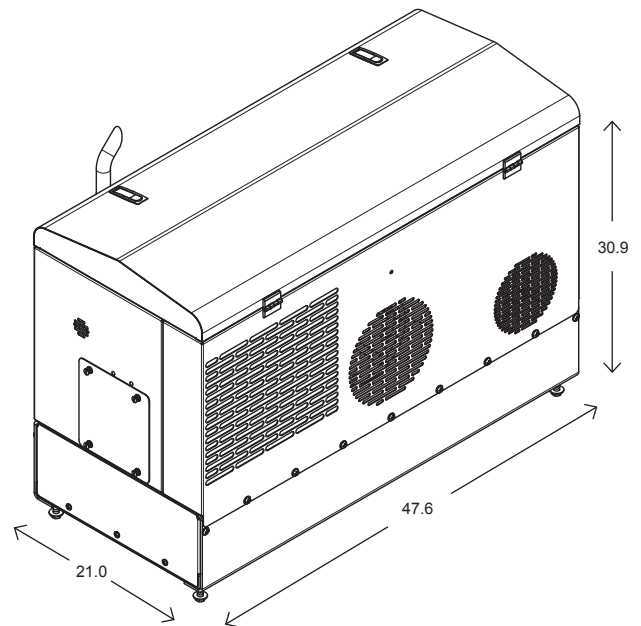
- Powder-Coated Galvanneal Sheet Metal Enclosure
- Lifting Bail

SAFETY EQUIPMENT

- Low Engine Oil Shut Down
- Service Access Door Shut Down
- Engine Over Temperature Shut Down
- Air Pressure Safety Relief Valve and Automatic Blow-Down On Shut Down
- High-Temperature & High-Pressure Compressor Shut Down
- Oil Fill Plug Safety Relief

OPTIONS/ACCESSORIES

- Air Reservoir Tanks
- After Coolers
- Air Hoses
- Filter/Regulator/Lubricators
- Hose Reels
- OSHA Valves
- Moisture Separators
- Tool Oilers
- Air Tools
- Maintenance Kits
- Cold Weather Kit



VANAIR[®]
MOBILE POWER SOLUTIONS[®]

800.526.8817 | vanair.com

10896 West 300 North | Michigan City, Indiana 46360 USA



POWERFLEXAEGAS_07102020_MN

FREIGHT NOT
INCLUDED IN
PRICE OF UNIT.
FREIGHT WILL
BE BILLED UPON
PURCHASE.