

# LIGHT DUTY SERIES

## C2 Pickup

**MAXON®**



### C2 SPECIFICATIONS

Introducing the all-new C2 just like the liftgates you know, but at significantly reduced cost. The C2 provides direct lifting with level ride and ramp options that increase loadable platform depth.

- C2 liftgates are built with high performance and low maintenance in mind
- Oversized, fully enclosed pump and motor assembly helps ensure increased life and less downtime
- Maintenance-free bearings reduce the need for service

Model No.	Load Area	Ramp	Travel	Weight
-----------	-----------	------	--------	--------

1300 Lbs	Steel Platform				
	C2-60-1342 TP27	55" X 27"	4"	28" to 42"	460 lbs
	C2-60-1342 TP38	55" X 38"	4"		510 lbs
	C2-60-1342 TP42	55" X 42"	7"		535 lbs
	Aluminum Platform				
	C2-60-1342 EA27	55" X 27"	4"	28" to 42"	435 lbs
	C2-60-1342 EA38	55" X 38"	6"		465 lbs
	C2-60-1342 EA48	55" X 48"	6"		495 lbs
	Grip Strut Platform				
C2-60-1342 GS27	55" X 27"	4"	28" to 42"	460 lbs	
Bar Grate Platform					
C2-60-1342 BG27	55" X 27"	4"	28" to 42"	460 lbs	

1500 Lbs	Steel Platform				
	C2-60-1542 TP27	55" X 27"	4"	28" to 42"	460 lbs
	C2-60-1542 TP38	55" X 38"	4"		510 lbs
	C2-60-1542 TP42	55" X 42"	7"		535 lbs
	Aluminum Platform				
	C2-60-1542 EA27	55" X 27"	4"	28" to 42"	435lbs
	C2-60-1542 EA38	55" X 38"	6"		465 lbs
	C2-60-1542 EA48	55" X 48"	6"		495 lbs
	Grip Strut Platform				
C2-60-1542 GS27	55" X 27"	4"	28" to 42"	460 lbs	
Bar Grate Platform					
C2-60-1542 BG27	55" X 27"	4"	28" to 42"	460 lbs	



Maxon Lift Corp. 11921 Slauson Ave., Santa Fe Springs, CA 90670  
800.227.4116 Fax 888.771.7713, [www.maxonlift.com](http://www.maxonlift.com)

# LIGHT DUTY SERIES

## C2 Pickup

**MAXON®**

### C2 standard features

- Dual hydraulic lifting cylinders
- Maintenance-free components
- Protected / recessed main control with time-out feature
- Steel or aluminum platforms
- Fully-enclosed hydraulic system
- Patent Pending Pre-punched Holes for Camera/Sensors

### Optional features

- Light Kits
- Remote Pendant Control
- Rubber Platform Protection Bumpers
- Tire Rack Kit



### Enclosed Pump & Motor Assembly

The C2 pump and motor assembly is fully enclosed and shielded from the elements.



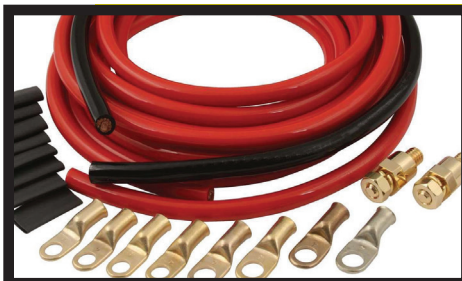
### Main Control with Time-Out Feature

A timed toggle control prevents unauthorized use. It automatically deactivates 90 seconds after operation.



### Maintenance Free Pins & Bushings

Maintenance free pins and bushings allow for years of maintenance free service.



### Power Cable with Full Length Ground

The dedicated ground cable helps to get the maximum lifespan out of the vehicles battery.

**Distributed by:**

M-211-0220

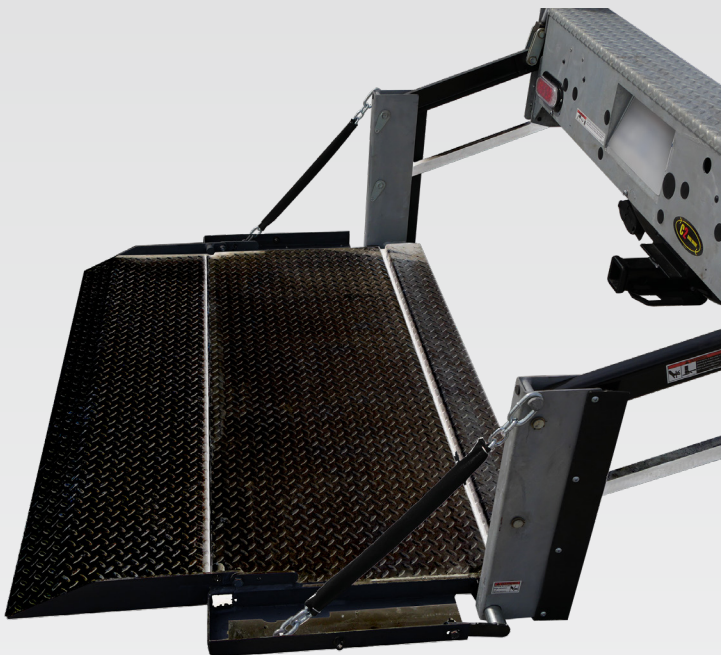


Maxon Lift Corp. 11921 Slauson Ave., Santa Fe Springs, CA 90670  
800.227.4116 Fax 888.771.7713, [www.maxonlift.com](http://www.maxonlift.com)

# LIGHT DUTY SERIES

## C2 Service Body

**MAXON®**



### C2 SPECIFICATIONS

Introducing the all-new C2 just like the liftgates you know, but at significantly reduced cost. The C2 provides direct lifting with level ride and ramp options that increase loadable platform depth.

- C2 liftgates are built with high performance and low maintenance in mind
- Oversized, fully enclosed pump and motor assembly helps ensure increased life and less downtime
- Maintenance-free bearings reduce the need for service

	Model No.	Load Area	Ramp	Travel	Weight
1300 lbs	Steel Platform				
	C2-54-1342 TP27	49" X 27"	4"	28" to 42"	475 lbs
	C2-54-1342 TP38	49" X 38"			
	C2-54-1342 TP42	49" X 42"	7"		
	Aluminum Platform				
	C2-54-1342 EA27	49" X 27"	6"	28" to 42"	430 lbs
	C2-54-1342 EA38	49" X 38"			
	C2-54-1342 EA48	49" X 48"			
	Grip Strut Platform				
	C2-54-1342 GS27	50" X 27"	4"	28" to 42"	475 lbs
Bar Grate Platform					
C2-54-1342 BG27	50" X 27"	4"	28" to 42"	475 lbs	
1600 lbs	Steel Platform				
	C2-54-1642 TP27	49" X 27"	4"	28" to 42"	475 lbs
	C2-54-1642 TP38	49" X 38"			
	C2-54-1642 TP42	49" X 42"	7"		
	Aluminum Platform				
	C2-54-1642 EA27	49" X 27"	6"	28" to 42"	430 lbs
	C2-54-1642 EA38	49" X 38"			
	C2-54-1642 EA48	49" X 48"			
	Grip Strut Platform				
	C2-54-1642 GS27	50" X 27"	4"	28" to 42"	475 lbs
Bar Grate Platform					
C2-54-1642 BG27	50" X 27"	4"	28" to 42"	475 lbs	



Maxon Lift Corp. 11921 Slauson Ave., Santa Fe Springs, CA 90670  
800.227.4116 Fax 888.771.7713, [www.maxonlift.com](http://www.maxonlift.com)



# LIGHT DUTY SERIES

## C2 Service Body

**MAXON®**

### C2 standard features

- Dual hydraulic lifting cylinders
- Maintenance-free components
- Protected / recessed main control with time-out feature
- Steel or aluminum platforms
- Fully-enclosed hydraulic system
- Patent Pending Pre-punched Holes for Camera/Sensors
- Gravity down only

### Optional features

- Light Kits
- Remote Pendant Control
- Rubber Platform Protection Bumpers
- Tire Rack Kit



### Enclosed Pump & Motor Assembly

The C2 pump and motor assembly is fully enclosed and shielded from the elements.



### Main Control with Time-Out Feature

A timed toggle control prevents unauthorized use. It automatically deactivates 90 seconds after operation.



### Maintenance Free Pins & Bushings

Maintenance free pins and bushings allow for years of maintenance free service.



### Power Cable with Full Length Ground

The dedicated ground cable helps to get the maximum lifespan out of the vehicles battery.

**Distributed by:**

M-212-0220



Maxon Lift Corp. 11921 Slauson Ave., Santa Fe Springs, CA 90670  
800.227.4116 Fax 888.771.7713, [www.maxonlift.com](http://www.maxonlift.com)



# LIGHT DUTY SERIES

## C2 Stakebed & Van Body

**MAXON®**



### C2 SPECIFICATIONS

Introducing the all-new C2 just like the liftgates you know, but at significantly reduced cost. The C2 provides direct lifting with level ride and ramp options that increase loadable platform depth.

- C2 liftgates are built with high performance and low maintenance in mind
- Oversized, fully enclosed pump and motor assembly helps ensure increased life and less downtime
- Maintenance-free bearings reduce the need for service

Model No.*	Load Area	Ramp	Travel	Weight
Steel Platform				
C2-92-1650 TP35	87" X 35"	6"	30" to 50"	628 lbs
C2-92-1650 TP41	87" X 41"	6"		655 lbs
Aluminum Platform				
C2-92-1650 EA37	87" X 37"	6"	30" to 50"	561 lbs
C2-92-1650 EA41	87" X 41"	6"		577 lbs
Grip Strut Platform				
C2-92-1650 GS33	87" X 33"	6"	30" to 50"	628 lbs
Bar Grate Platform				
C2-92-1650 BG33	87" X 33"	6"	30" to 50"	628 lbs

\*Available additional Body sizes: 90", 85", 80", 75" (corresponds to model designations 87", 81", 78", and 73"). Prices are the same as the 92" models.



Maxon Lift Corp. 11921 Slauson Ave., Santa Fe Springs, CA 90670  
800.227.4116 Fax 888.771.7713, [www.maxonlift.com](http://www.maxonlift.com)

# LIGHT DUTY SERIES

## C2 Stakebed & Van Body

**MAXON®**

### C2 standard features

- Dual hydraulic lifting cylinders
- Maintenance-free components
- Protected / recessed main control with time-out feature
- Steel or aluminum platforms
- Fully-enclosed hydraulic system
- Patent Pending Pre-punched Holes for Camera/Sensors
- Gravity down only

### Optional features

- Light Kits
- Remote Pendant Control
- Rubber Platform Protection Bumpers
- Tire Rack Kit



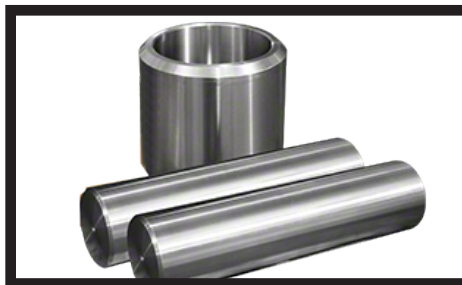
### Enclosed Pump & Motor Assembly

The C2 pump and motor assembly is fully enclosed and shielded from the elements.



### Main Control with Time-Out Feature

A timed toggle control prevents unauthorized use. It automatically deactivates 90 seconds after operation.



### Maintenance Free Pins & Bushings

Maintenance free pins and bushings allow for years of maintenance free service.



### Power Cable with Full Length Ground

The dedicated ground cable helps to get the maximum lifespan out of the vehicles battery.

**Distributed by:**

M-213-0520



Maxon Lift Corp. 11921 Slauson Ave., Santa Fe Springs, CA 90670  
800.227.4116 Fax 888.771.7713, [www.maxonlift.com](http://www.maxonlift.com)



# LIGHT DUTY SERIES

## GPC X1-LDF

# MAXON®



## SPECIFICATIONS

The all-new LDF, designed for today's compact cargo vans. Imagine what this gate will do for your productivity. Discover Maxon, the new heavy in light.

- Lightest liftgate in it's class (fewest amount of parts due to the patented X1 technology)
- Aluminum platform with dual cart stops
- Ultra-slim control box (0.2" thick)
- Simple bolt-on installation (no cutting or welding on chassis frame)
- Bridge plate standard

Model Capacity	Total Weight	Aluminum Platform
GPC X1-LDF 1,300 LBS	415 lbs	63" x 53"



Maxon Lift Corp. 11921 Slauson Ave., Santa Fe Springs, CA 90670  
800.227.4116 Fax 888.771.7713, [www.maxonlift.com](http://www.maxonlift.com)



# LIGHT DUTY SERIES

## GPC X1-LDF

# MAXON®

### Standard Equipment

- 0.2" flat main control
- Quiet power pack with thermo switch
- Automatic tilt-up and tilt-down at ground level
- Maintenance-free bushings
- Warning flashlights on platform corners
- Bridge plate
- 3 button handheld control
- Bolt-on Installation brackets
- Aluminum platform with dual cart stops



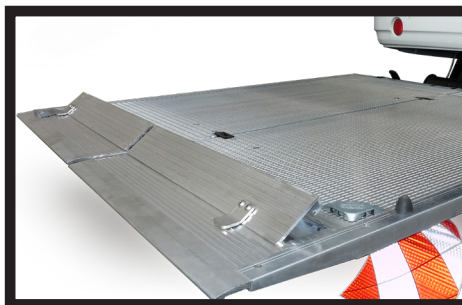
### New Generation Control

Extremely flat (0.2") control module suitable for mounting on the van body. Extra robust and waterproof



### Bolt-On Install

Pre-drilled mount plates bolt right to the vehicle chassis



### Aluminum platform with dual cart stops

Each one of the platform sections features an independent cart stop

**Distributed by:**

### Patented X1 Technology

Patented X1 technology (only 1 lifting and one tilting cylinder needed) enables to build the lightest cargo van gate solution with the lowest maintenance costs.

M-215-0419



Maxon Lift Corp. 11921 Slauson Ave., Santa Fe Springs, CA 90670  
800.227.4116 Fax 888.771.7713, [www.maxonlift.com](http://www.maxonlift.com)

FREIGHT NOT  
INCLUDED IN  
PRICE OF UNIT.  
FREIGHT WILL  
BE BILLED UPON  
PURCHASE.