

ANTHONY
LIFTGATES, INC.®

ALB



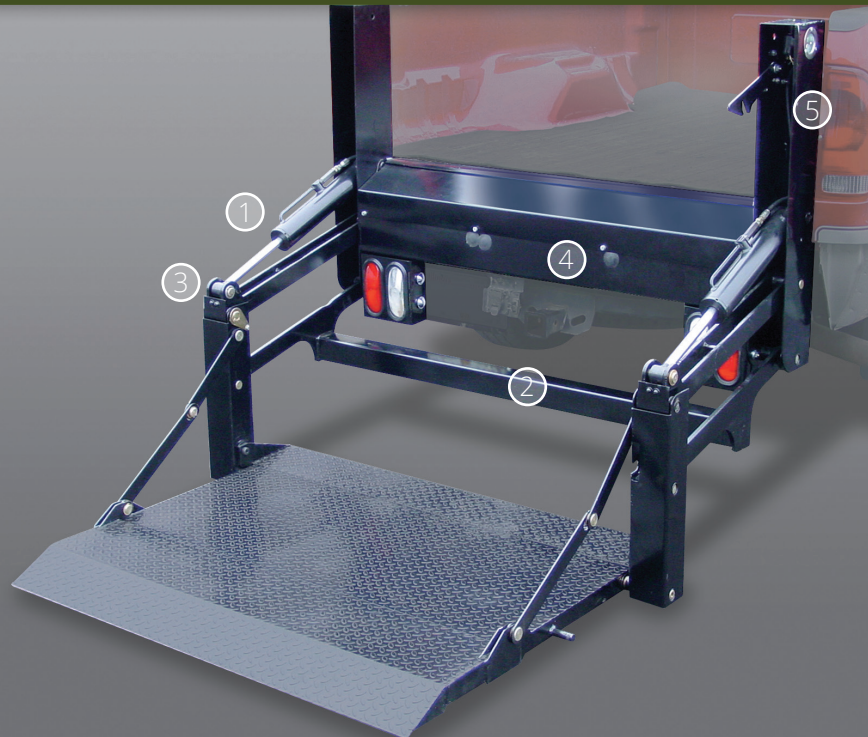
* Shown with optional galvanized finish, aluminum platform, and step kit.

PICKUP SERIES

LIFTING CAPACITIES (LBS): 1500

KEY ADVANTAGES

- 1. Twin Cylinder Drive**
Cylinders provide powerful lifting at low hydraulic pressures for extended hydraulic system life.
- 2. Stabilizer Beam**
Minimizes lift sway and doubles as a step.
- 3. Lifetime-Warranty Service Free Bushings**
Used at all critical pivot points to reduce wear without the need for routine lubrication.
- 4. Spare Tire Access**
Spare tire accessible through two holes in rear frame.
- 5. Marine Duty Potted Toggle Switch**
Heavy duty toggle, potted to permanently separate and seal electrical connections from corrosion.



QUALITY, RELIABILITY, CUSTOMER SERVICE

MADE IN THE USA 

BUILT FOR WORK

A work truck should be tough. To be sure ALB is up to the task, we endurance tested it to 100,000 cycles at maximum capacity. The result: zero failure, and no visible signs of wear to critical pivot points. **THAT is Anthony quality.**

STANDARD FEATURES

- **Anthony 3-Step Powder Coat**
Steel components are washed, shot blast prepped, and coated with premium finish.
- **EZ Mount**
Ships factory assembled, filled, and tested.
- **Industry-Leading Warranty**
2 years mechanical + 2 years electrical & hydraulic, parts and labor.
- **Circuit Protection**
200 Amp fuse protects truck wiring from a "dead short".
- **Pressure Compensated Flow Valve**
Constant, controlled speeds at all times. Prevents "free-fall" under certain hydraulic failures.
- **Easy Access Power Unit**
Accessible through steel panel on top of rear bumper housing.
- **Universal Mount**
Fits most full size domestic or foreign pickups, and most utility bodies. Designed to allow clearance with most hitch assemblies.

QUALITY COMES STANDARD

AVAILABLE PLATFORMS

Platform Type	Load Area + Ramp
Steel Ramped	50" x 41" + 6"
Aluminum Ramped	50" x 41" + 6"
Steel Bar Grate with Tire Rack	50" x 22"

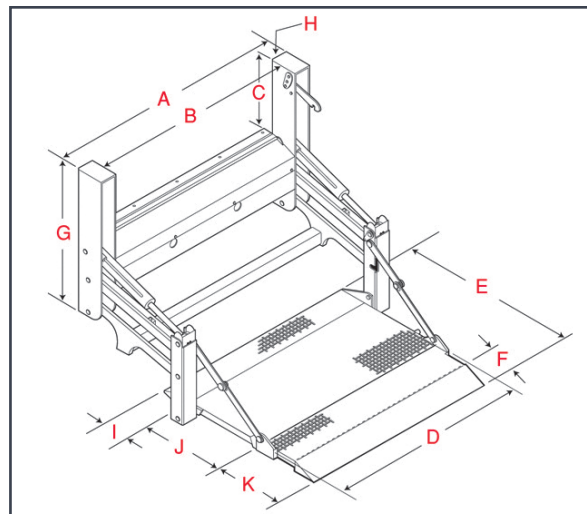
OPTIONS

- Galvanized finish with extended warranty
- Wireless, removable handheld corded, or dual control options.
- Access step kit
- Light kit
- Cab cutoff switch
- Utility body mounting kit

ALB DIMENSIONS

Bed Height Range Up to 46"

A	61.7"
B	52.5"
C	19.5"
D	50"
E	46"
F	5"
G	36.75"
H	4.6"
I	7.3"
J	21.8"
K	16.9"



Anthony Liftgates, Inc.

1037 W. Howard Street
P.O. Box 615
Pontiac, IL 61764-0615

Phone: 815.842.3383

Fax: 815.844.3612

Toll Free: 800.482.0003

www.anthonyliftgates.com

ANTHONY
LIFTGATES, INC.®

LA

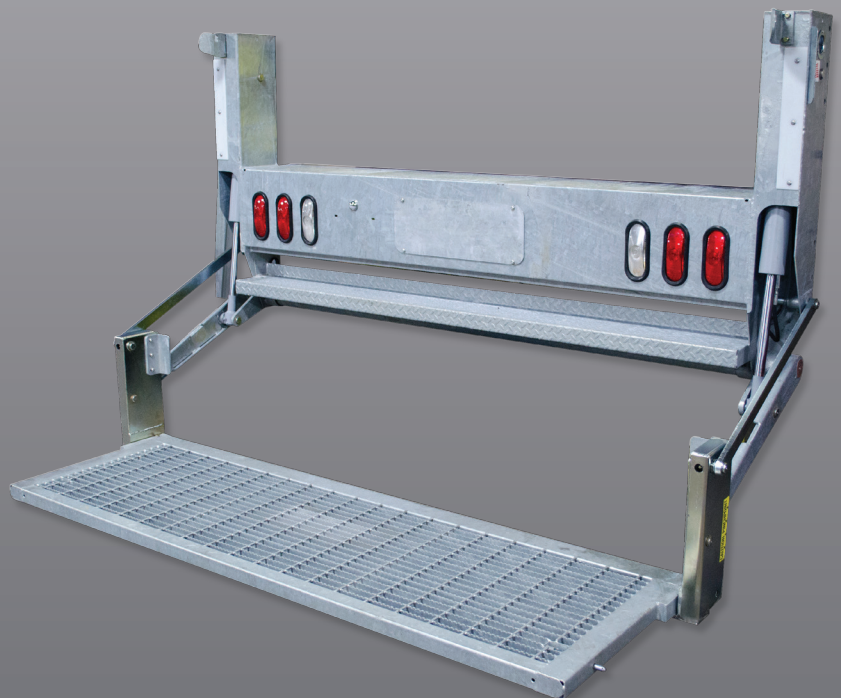


VAN & UTILITY BODY SERIES

LIFTING CAPACITIES (LBS): 1600, 2000

KEY ADVANTAGES

- 1. Simple & Reliable Design**
Proven for over 25 years.
- 2. Level Ride Platform**
Platform remains level throughout the lift cycle.
- 3. EZ Mount**
Ships factory assembled, filled, and tested.
- 4. Marine Duty Potted Toggle Switch**
Heavy duty toggle, potted to permanently separate and seal electrical connections from corrosion.



QUALITY, RELIABILITY, CUSTOMER SERVICE

MADE IN THE USA 

STANDARD FEATURES

- LED Lighting

Bright stop/turn/tail lights built in to the liftgate frame.

- Anthony 3-Step Powder Coat

Steel components are washed, shot blast prepped, and coated with premium finish.

- Pressure Compensated Flow Valve

Constant, controlled speeds at all times. Prevents "free-fall" under certain hydraulic failures.

- Circuit Protection

200 Amp fuse protects truck wiring from a "dead short".

QUALITY COMES STANDARD

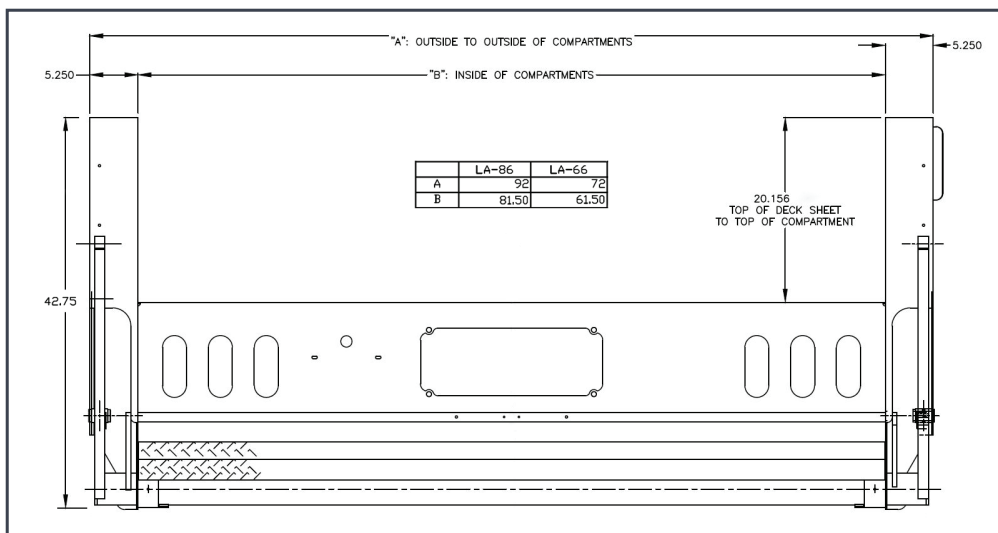
AVAILABLE MODELS, PLATFORMS, CAPACITIES

Model	LA-66	LA-86
Capacity (lbs)	1600	2000
Bed Height Range	Up to 54"	
Overall Width	72"	92"
Available Platforms (Load Area + Ramp)		
All Aluminum	65" x 41" + 6"	85" x 41" + 6"
Steel Bar Grate with Tire Rack	65" x 27"	85" x 27"

OPTIONS

- Galvanized Finish
- Wireless, removable handheld corded, & dual control options
- Dual, foot operated cart stops

LA MOUNTING DIMENSIONS



Anthony Liftgates, Inc.

1037 W. Howard Street
P.O. Box 615
Pontiac, IL 61764-0615

Phone: 815.842.3383

Fax: 815.844.3612

Toll Free: 800.482.0003

www.anthonyliftgates.com

FREIGHT NOT
INCLUDED IN
PRICE OF UNIT.
FREIGHT WILL
BE BILLED UPON
PURCHASE.