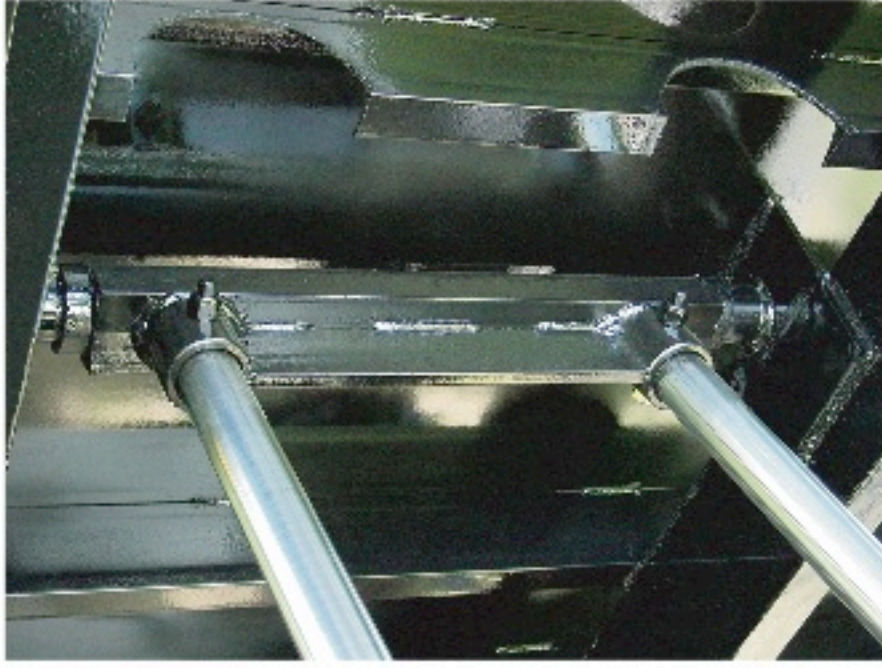


5530DM Hoists



The upper lift point of the 5530DM uses 2 1/4" pins that are welded to the longitudinals for extra strength.

This Subframe
is built with A572
grade 50 high
tensile steel &
4140 grade
weldable
castings

The 5530DM is double
acting.



Shown are the 4140 heavy duty steel rear hinges with full length hinge pin. These hinges weld directly to the longitudinals.

Application Specifications

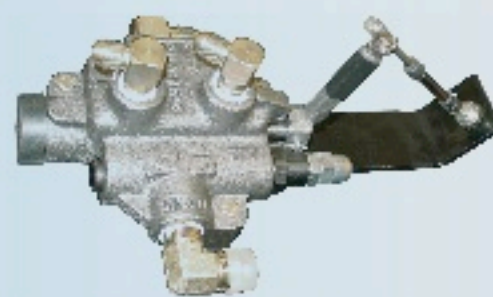
The 5530DM hoist is designed for trucks with 84" to 102" CA. This hoist is perfect for 10' to 14' bodies and has a dumping angle of 42 degrees and has a 1" mounting height. For the most durable combination, 6" body longitudinals are recommended. All Champion manufactured hoist are powder coat primed and are rigorously inspected by quality control to ensure top quality. The 5530DM hoist is equipped with two 5" cylinder with a 30" stroke and 2" chrome shaft.

5530DM is equivalent to class E

Available Components



The P22 direct gear pump is bi-rotational with side and rear ports for versatility, thus eliminating the drive line for added safety and dependability. This pump has an S.A.E. "B" 2-bolt flange. 15 GPM @ 1200 RPM



The SP4 valve with cable and lever control is used in conjunction with the P22 pump. This valve is easy to install and makes the hydraulic system double acting.



The 8.5 gallon box type reservoir is designed to be frame mounted inboard. It hangs out of the way and is equipped with a brass wire mesh suction strainer, oil level & temperature gauge.

Champion Hoist and Equipment™
200 Champion Drive
Dunn, NC 28334
(910) 897-4995 Fax (910) 897-7306

5530DM Hoists

Experience that Matters

Dedicated to perfection and continuing to lead the industry, Champion Hoist and Equipment™ has a low tolerance for defects and a strong desire for quality craftsmanship to ensure customer satisfaction. With over 35 years of excellence, Champion built hoists are well developed and industry proven. To ensure a long lasting durable product, all Champion equipment is shot blasted and powder coated black. We are a proud member of the National Truck Equipment Association.

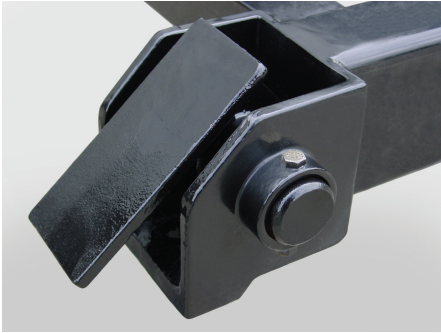


Champion built cylinders and hoists are designed to be double acting (power up and down). The 5530DM however is double acting. Our hoists are easy to install with as little truck and body modification as possible. To further ease the installation process, Champion hoists mount to the body and truck chassis using heavy duty grade 8 bolts with little or no welding needed.

With over 30 hoists offered,
Champion Hoist and Equipment™
is sure to have what you need.

Visit Champion Hoist and Equipment™
and all affiliated companies
on the world wide web.
www.championtruckhoist.com

PF-524 / PF-624



The hinges are cast from extra heavy duty 4140 grade steel to ensure durability. Adding to the ease of installation and durability, these hinges are welded directly to the body's main runners.

Payload range is governed by hinge location, load location, slide angle required to dump material, and includes average body weight.

This Subframe
is built with A572
grade 50 high
tensile steel &
4140 grade
weldable
castings

Champion reserves the right under its Product Improvement Program to modify construction and/or design and furnish equipment when so altered without reference to illustration and/or specifications shown herein. All specifications subject to change without notice.

Application Specifications

The PF524 is an extra stable pusher type hoist that features fast, easy mounting. The unit is ideal for one-ton and super-duty applications on trucks serving the smaller material handling needs of contractors, landscapers, golf courses and similar activities. Available with electric, direct mount or remote pump options. This hoist features a durable, smooth-working chrome piston rod, 5" / 6" cylinder bore with a 24" stroke. Capacity is 7.7 to 12.9 tons with an operating pressure of 2800 psi. This hoist dumps at 50 degrees and weighs less than 500 pounds. The PF524 and PF624 hoists are double acting (power up and down).

PF524DA is equivalent to class 30
PF624DA is equivalent to class 30

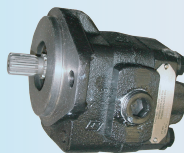
Available Components

The P21 direct mount gear pump is bi-rotational with side and rear ports for versatility, thus eliminating the drive line for added safety and dependability. This pump has an S.A.E. "B" 2-bolt flange and is used for lighter duty hoists. 10 GPM @ 1200 RPM

An electric pump is perfect for trucks without PTO provisions. Electric pumps are available in single acting and double acting (Power up or power Down) and are available for lighter duty hoists.

The 8.5 gallon box type reservoir is designed to be frame mounted. It hangs out of the way and is equipped with a brass wire mesh suction strainer, oil level & temperature gauge.

The pump directs flow to the tank valve combination that can be conveniently mounted to the frame. The control cable incorporates a safety button to prevent accidental operation. Available in 15 Quart and 21 Quart. Used with P21 and P22 pumps.



Champion Hoist and Equipment™

200 Champion Drive
Dunn, NC 28334

(910) 897-4995 Fax (910) 897-7306

**POWDER
COATED
PRIMER**



PF-524 / PF-624

Experience that Matters

Champion Hoist and Equipment™ has a low tolerance for defects and a strong desire for quality craftsmanship to ensure customer satisfaction. Dedicated to perfection and continuing to lead the industry with over 35 years of excellence, Champion built hoists are well developed and industry proven. Champion built equipment is shot blasted and powder coated black to ensure a long lasting durable product. We are a proud member of the National Truck Equipment Association.



Champion built cylinders and hoists are designed to be double acting (power up and down). Our hoists are easy to install with as little truck and body modification as possible. To further ease the installation process, Champion hoists mount to the body and truck chassis using heavy duty grade 8 bolts with little or no welding needed.

With over 30 hoists offered,
Champion Hoist and Equipment™
is sure to have what you need.

Visit Champion Hoist and Equipment™
and all affiliated companies
on the world wide web.
www.championtruckhoist.com

5530DM Hoists

Experience that Matters

Dedicated to perfection and continuing to lead the industry, Champion Hoist and Equipment™ has a low tolerance for defects and a strong desire for quality craftsmanship to ensure customer satisfaction. With over 35 years of excellence, Champion built hoists are well developed and industry proven. To ensure a long lasting durable product, all Champion equipment is shot blasted and powder coated black. We are a proud member of the National Truck Equipment Association.

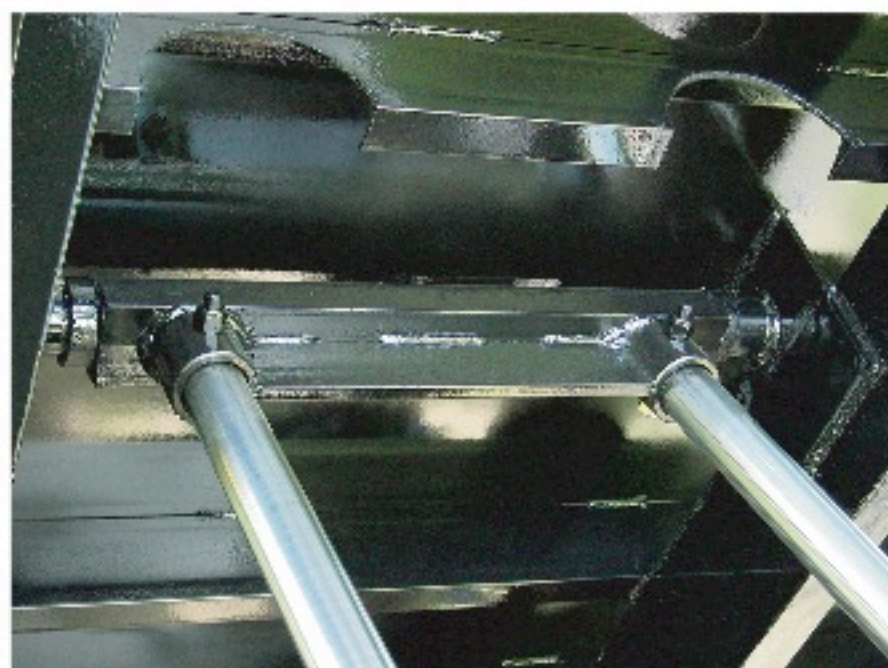


Champion built cylinders and hoists are designed to be double acting (power up and down). The 5530DM however is double acting. Our hoists are easy to install with as little truck and body modification as possible. To further ease the installation process, Champion hoists mount to the body and truck chassis using heavy duty grade 8 bolts with little or no welding needed.

With over 30 hoists offered,
Champion Hoist and Equipment™
is sure to have what you need.

Visit Champion Hoist and Equipment™
and all affiliated companies
on the world wide web.
www.championtruckhoist.com

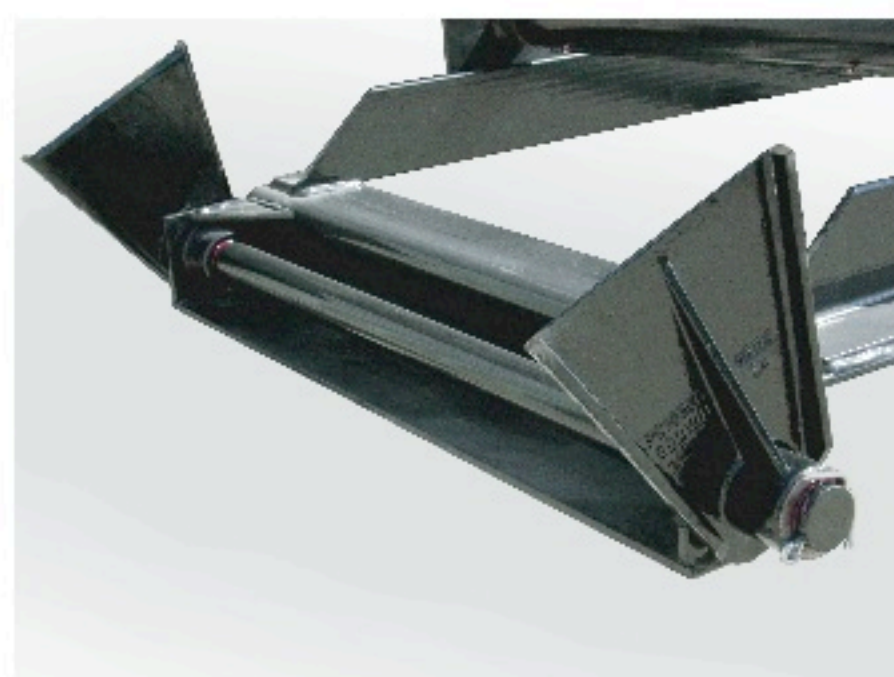
5530DM Hoists



The upper lift point of the 5530DM uses 2 1/4" pins that are welded to the longitudinals for extra strength.

This Subframe
is built with A572
grade 50 high
tensile steel &
4140 grade
weldable
castings

The 5530DM is double
acting.



Shown are the 4140 heavy duty steel rear hinges with full length hinge pin. These hinges weld directly to the longitudinals.

Application Specifications

The 5530DM hoist is designed for trucks with 84" to 102" CA. This hoist is perfect for 10' to 14' bodies and has a dumping angle of 42 degrees and has a 1" mounting height. For the most durable combination, 6" body longitudinals are recommended. All Champion manufactured hoist are powder coat primed and are rigorously inspected by quality control to ensure top quality. The 5530DM hoist is equipped with two 5" cylinder with a 30" stroke and 2" chrome shaft.

5530DM is equivalent to class E

Available Components



The P22 direct gear pump is bi-rotational with side and rear ports for versatility, thus eliminating the drive line for added safety and dependability. This pump has an S.A.E. "B" 2-bolt flange. 15 GPM @ 1200 RPM



The SP4 valve with cable and lever control is used in conjunction with the P22 pump. This valve is easy to install and makes the hydraulic system double acting.



The 8.5 gallon box type reservoir is designed to be frame mounted inboard. It hangs out of the way and is equipped with a brass wire mesh suction strainer, oil level & temperature gauge.

Champion Hoist and Equipment™
200 Champion Drive
Dunn, NC 28334
(910) 897-4995 Fax (910) 897-7306

Champion Hoist and Equipment™ is an affiliate of



8/17/06



CS615 Conversion Hoist

**Manufactured Using
100K Material**

Experience that Matters

If you're in the market for a hoist, look no further. Champion Hoist and Equipment™ has a low tolerance for defects and a strong desire for quality craftsmanship to ensure customer satisfaction. Dedicated to perfection and continuing to lead the industry with over 100 years of excellence, Champion built hoists are well developed and industry proven. Champion hoists are shot blasted and powder coated black to ensure a long lasting durable product. We are a proud member of the National Truck Equipment Association.

This hoist is NTEA rating class D

Cylinder specification: 6" Bore; 15" Stroke; 2" Diameter Rod
Available with Single or Double Acting Electric Pump, or
Direct mount pump with tank valve combination

GVW:	10,000
Mounting Heights:	6-1/2"
Capacity Range:	9.9 - 22.1 Tons
Approximate Weight:	400 LBS

Rear hinge and upper and lower pivots are included.

With over 50 hoists offered,
Champion Hoist and Equipment™
is sure to have what you need.

Champion Hoist and Equipment™
200 Champion Drive
Dunn, NC 28334
(910) 897-4995 Fax (910) 897-7306



CS615HD Conversion Hoist

**Manufactured Using
100K Material**

Experience that Matters

If you're in the market for a hoist, look no further. Champion Hoist and Equipment™ has a low tolerance for defects and a strong desire for quality craftsmanship to ensure customer satisfaction. Dedicated to perfection and continuing to lead the industry with over 100 years of excellence, Champion built hoists are well developed and industry proven. Champion hoists are shot blasted and powder coated black to ensure a long lasting durable product. We are a proud member of the National Truck Equipment Association.

This hoist is NTEA rating class D

Cylinder specification: 6" Bore; 15" Stroke; 2" Diameter Rod
Available with Single or Double Acting Electric Pump, or
Direct mount pump with tank valve combination

GVW: 14,000 - 18,000

Mounting Heights: 6-1/2"

Capacity Range: 8.6 - 21.1 Tons

Approximate Weight: 580 LBS

Rear hinge and upper and lower pivots are included.



**POWDER
COATED
PRIMER**

With over 50 hoists offered,
Champion Hoist and Equipment™
is sure to have what you need.

Champion Hoist and Equipment™
200 Champion Drive
Dunn, NC 28334
(910) 897-4995 Fax (910) 897-7306



CS615LS Conversion Hoist



**POWDER
COATED
PRIMER**

**Manufactured Using
100K Material**

Experience that Matters

If you're in the market for a hoist, look no further. Champion Hoist and EquipmentTM has a low tolerance for defects and a strong desire for quality craftsmanship to ensure customer satisfaction. Dedicated to perfection and continuing to lead the industry with over 100 years of excellence, Champion built hoists are well developed and industry proven. Champion hoists are shot blasted and powder coated black to ensure a long lasting durable product. We are a proud member of the National Truck Equipment Association.

This hoist is NTEA rating class D

Cylinder specification: 6" Bore; 15" Stroke; 2" Diameter Rod
Available with Single or Double Acting Electric Pump, or
Direct mount pump with tank valve combination

GVW:	14,000 - 18,000
Mounting Heights:	6-1/2"
Capacity Range:	8.6 - 19.2 Tons
Approximate Weight:	435 LBS

Rear hinge and upper and lower pivots are included.

With over 50 hoists offered,
Champion Hoist and EquipmentTM
is sure to have what you need.

Champion Hoist and EquipmentTM
200 Champion Drive
Dunn, NC 28334
(910) 897-4995 Fax (910) 897-7306



CS620HD Conversion Hoist



**POWDER
COATED
PRIMER**

**Manufactured Using
100K Material**

Experience that Matters

If you're in the market for a hoist, look no further. Champion Hoist and EquipmentTM has a low tolerance for defects and a strong desire for quality craftsmanship to ensure customer satisfaction. Dedicated to perfection and continuing to lead the industry with over 100 years of excellence, Champion built hoists are well developed and industry proven. Champion hoists are shot blasted and powder coated black to ensure a long lasting durable product. We are a proud member of the National Truck Equipment Association.

This hoist is NTEA rating class D

Cylinder specification: 6" Bore; 20" Stroke; 2" Diameter Rod
Available with Single or Double Acting Electric Pump, or
Direct mount pump with tank valve combination

GVW: 14,000 - 24,000
Mounting Heights: 6-1/2"
Capacity Range: 11.8 - 24.2 Tons
Approximate Weight: 635 LBS

Rear hinge and upper and lower pivots are included.

With over 50 hoists offered,
Champion Hoist and EquipmentTM
is sure to have what you need.

Champion Hoist and EquipmentTM
200 Champion Drive
Dunn, NC 28334
(910) 897-4995 Fax (910) 897-7306



CS6615 Conversion Hoist

**Manufactured Using
100K Material**

Experience that Matters

If you're in the market for a hoist, look no further. Champion Hoist and EquipmentTM has a low tolerance for defects and a strong desire for quality craftsmanship to ensure customer satisfaction. Dedicated to perfection and continuing to lead the industry with over 100 years of excellence, Champion built hoists are well developed and industry proven. Champion hoists are shot blasted and powder coated black to ensure a long lasting durable product. We are a proud member of the National Truck Equipment Association.

This hoist is NTEA rating class E

Cylinder specification: Twin 6" Bore; 15" Stroke; 2" Rod
Available with Direct mount pump with tank valve combo

GVW:	24,000 - 28,000
Mounting Heights:	6-1/2"
Capacity Range:	17.8 - 27.3 Tons
Approximate Weight:	690 LBS

Rear hinge and upper and lower pivots are included.

With over 50 hoists offered,
Champion Hoist and EquipmentTM
is sure to have what you need.

Champion Hoist and EquipmentTM
200 Champion Drive
Dunn, NC 28334
(910) 897-4995 Fax (910) 897-7306



CS6620 Conversion Hoist

**Manufactured Using
100K Material**

Experience that Matters

If you're in the market for a hoist, look no further. Champion Hoist and Equipment™ has a low tolerance for defects and a strong desire for quality craftsmanship to ensure customer satisfaction. Dedicated to perfection and continuing to lead the industry with over 100 years of excellence, Champion built hoists are well developed and industry proven. Champion hoists are shot blasted and powder coated black to ensure a long lasting durable product. We are a proud member of the National Truck Equipment Association.

This hoist is NTEA rating class G

Cylinder specification: Twin 6" Bore; 20" Stroke; 2" Rod
Available with Direct mount pump with tank valve combo

GVW:	24,000 - 28,000
Mounting Heights:	6-1/2"
Capacity Range:	21.4 - 35.9 Tons
Approximate Weight:	775 LBS

Rear hinge and upper and lower pivots are included.



**POWDER
COATED
PRIMER**

With over 50 hoists offered,
Champion Hoist and Equipment™
is sure to have what you need.

Champion Hoist and Equipment™
200 Champion Drive
Dunn, NC 28334
(910) 897-4995 Fax (910) 897-7306



CS6630 Conversion Hoist

**Manufactured Using
100K Material**

Experience that Matters

If you're in the market for a hoist, look no further. Champion Hoist and Equipment™ has a low tolerance for defects and a strong desire for quality craftsmanship to ensure customer satisfaction. Dedicated to perfection and continuing to lead the industry with over 100 years of excellence, Champion built hoists are well developed and industry proven. Champion hoists are shot blasted and powder coated black to ensure a long lasting durable product. We are a proud member of the National Truck Equipment Association.

This hoist is NTEA rating class H

Cylinder specification: Twin 6" Bore; 30" Stroke; 2-1/2" Rod
Available with Direct mount pump with tank valve combo

GVW:	38,000 - 50,000
Mounting Heights:	7-1/2"
Capacity Range:	20.4 - 35.6 Tons
Approximate Weight:	1055 LBS

Rear hinge and upper and lower pivots are included.

With over 50 hoists offered,
Champion Hoist and Equipment™
is sure to have what you need.

Champion Hoist and Equipment™
200 Champion Drive
Dunn, NC 28334
(910) 897-4995 Fax (910) 897-7306

**POWDER
COATED
PRIMER**



GS628 Conversion Hoist

NEW

**All Champion hoists
are NTEA rated**



Experience that Matters

If you're in the market for a hoist, look no further. Champion Hoist and Equipment™ has a low tolerance for defects and a strong desire for quality craftsmanship to ensure customer satisfaction. Dedicated to perfection and continuing to lead the industry with over 35 years of excellence, Champion built hoists are well developed and industry proven. Champion hoists are shot blasted and powder coated black to ensure a long lasting durable product. We are a proud member of the National Truck Equipment Association.

This hoist is NTEA rating class E

The GS628 is recommended for 14' to 17' bodies on trucks with 24,000 to 28,000 GVWR rated chassis. This hoist uses a sturdy 6" cylinder with 28" stroke. Rear hinge and upper and lower pivots are included. Hydraulic packages are available. Gear pumps with reservoirs, Monarch electric double acting reservoir with Williams recycle valve.

With over 30 hoists offered,
Champion Hoist and Equipment™
is sure to have what you need.

Champion Hoist and Equipment™
200 Champion Drive
Dunn, NC 28334
(910) 897-4995 Fax (910) 897-7306



CS415 Conversion Hoist



**POWDER
COATED
PRIMER**

**Manufactured Using
100K Material**

Experience that Matters

If you're in the market for a hoist, look no further. Champion Hoist and EquipmentTM has a low tolerance for defects and a strong desire for quality craftsmanship to ensure customer satisfaction. Dedicated to perfection and continuing to lead the industry with over 100 years of excellence, Champion built hoists are well developed and industry proven. Champion hoists are shot blasted and powder coated black to ensure a long lasting durable product. We are a proud member of the National Truck Equipment Association.

This hoist is NTEA rating class B

Cylinder specification: 4" Bore; 15" Stroke; 2" Diameter Rod
Available with Single or Double Acting Electric Pump, or
Direct mount pump with tank valve combination

GVW: 6,000 - 8,000
Mounting Heights: 6-1/2"
Capacity Range: 4.9 - 9.8 Tons
Approximate Weight: 280 LBS

Rear hinge and upper and lower pivots are included.

With over 30 hoists offered,
Champion Hoist and EquipmentTM
is sure to have what you need.

Champion Hoist and EquipmentTM
200 Champion Drive
Dunn, NC 28334
(910) 897-4995 Fax (910) 897-7306



CS515 Conversion Hoist

**Manufactured Using
100K Material**

**POWDER
COATED
PRIMER**

Experience that Matters

If you're in the market for a hoist, look no further. Champion Hoist and EquipmentTM has a low tolerance for defects and a strong desire for quality craftsmanship to ensure customer satisfaction. Dedicated to perfection and continuing to lead the industry with over 100 years of excellence, Champion built hoists are well developed and industry proven. Champion hoists are shot blasted and powder coated black to ensure a long lasting durable product. We are a proud member of the National Truck Equipment Association.

This hoist is NTEA rating class C

Cylinder specification: 5" Bore; 15" Stroke; 2" Diameter Rod
Available with Single or Double Acting Electric Pump, or
Direct mount pump with tank valve combination

GVW: 10,000
Mounting Heights: 6-1/2"
Capacity Range: 6.9 - 15.4 Tons
Approximate Weight: 390 LBS

Rear hinge and upper and lower pivots are included.

This CS 515 hoist is shown with an available sub frame. Sub frames are also available for the CS 615, CS 615 HD, CS 620 HD at an additional cost. Frame adds an additional 4-1/2" to the mounting height and is available up to 16' long depending on hoist model.

With over 30 hoists offered,
Champion Hoist and EquipmentTM
is sure to have what you need.

Champion Hoist and EquipmentTM
200 Champion Drive
Dunn, NC 28334
(910) 897-4995 Fax (910) 897-7306

Front Mount Telescopic

5384T

- For trucks with 72" to 84" CA
- Designed for trucks with 25,500 to 33,000 GVWR
- Direct mount pump
- 10 gallon reservoir
- One 5" 3 stage cylinder 84" stroke
- For 9' to 10' body lengths
- 45 to 50 degree dump angle
- 6" longitudinal recommended
- Weight 664 lbs.

Model 5384T

63108T

- For trucks with 102" to 114" CT
- Designed for trucks with 33,000 to 50,000 GVWR
- Direct mount pump
- 26.5 gallon reservoir
- One 6" 3 stage cylinder 108" stroke
- For 10" to 13' body lengths
- 45 to 50 degree dump angle
- 7" longitudinal recommended
- Weight 941 lbs.

Model 63108T Class 100



63120T

- For trucks with 108" to 120" CT
- Designed for trucks with 50,000 GVWR
- Direct mount pump
- 26.5 gallon reservoir
- One 6" 3 stage cylinder 120" stroke
- For 14' to 15' body lengths
- 45 to 50 degree dump angle
- 7" longitudinal recommended
- Weight 951 lbs.

Model 63120T Class 110

73120T

- For trucks with 108" to 120" CT
- Designed for trucks with 50,000 GVWR
- Direct mount pump
- 26.5 gallon reservoir
- One 7" 3 stage cylinder 120" stroke
- For 14" to 15' body lengths
- 45 to 50 degree dump angle
- 7" longitudinal recommended
- Weight 1018 lbs.

Model 73120T Class 120

74135T

- For trucks with 132" to 144" CT
- Designed for trucks with 50,000 GVWR
- Direct mount pump
- 26.5 gallon reservoir
- One 7" 4 stage cylinder 135" stroke
- For 16' and 17' body lengths
- 45 to 50 degree dump angle
- 7" longitudinal recommended
- Weight 1045 lbs.

Model 74135T Class 120

74156T

- For trucks with 156" to 180" CT
- Designed for trucks with 50,000 GVWR
- Direct mount pump
- 26.5 gallon reservoir
- One 7" 4 stage cylinder 156" stroke
- For 18' and 19' body lengths
- 45 to 50 degree dump angle
- 7" longitudinal recommended
- Weight 1085 lbs.

Model 74156T

Front Mount Telescopic

5384T

- For trucks with 72" to 84" CA
- Designed for trucks with 25,500 to 33,000 GVWR
- Direct mount pump
- 10 gallon reservoir
- One 5" 3 stage cylinder 84" stroke
- For 9' to 10' body lengths
- 45 to 50 degree dump angle
- 6" longitudinal recommended
- Weight 664 lbs.

Model 5384T

63108T

- For trucks with 102" to 114" CT
- Designed for trucks with 33,000 to 50,000 GVWR
- Direct mount pump
- 26.5 gallon reservoir
- One 6" 3 stage cylinder 108" stroke
- For 10" to 13' body lengths
- 45 to 50 degree dump angle
- 7" longitudinal recommended
- Weight 941 lbs.

Model 63108T Class 100



63120T

- For trucks with 108" to 120" CT
- Designed for trucks with 50,000 GVWR
- Direct mount pump
- 26.5 gallon reservoir
- One 6" 3 stage cylinder 120" stroke
- For 14' to 15' body lengths
- 45 to 50 degree dump angle
- 7" longitudinal recommended
- Weight 951 lbs.

Model 63120T Class 110

73120T

- For trucks with 108" to 120" CT
- Designed for trucks with 50,000 GVWR
- Direct mount pump
- 26.5 gallon reservoir
- One 7" 3 stage cylinder 120" stroke
- For 14" to 15' body lengths
- 45 to 50 degree dump angle
- 7" longitudinal recommended
- Weight 1018 lbs.

Model 73120T Class 120

74135T

- For trucks with 132" to 144" CT
- Designed for trucks with 50,000 GVWR
- Direct mount pump
- 26.5 gallon reservoir
- One 7" 4 stage cylinder 135" stroke
- For 16' and 17' body lengths
- 45 to 50 degree dump angle
- 7" longitudinal recommended
- Weight 1045 lbs.

Model 74135T Class 120

74156T

- For trucks with 156" to 180" CT
- Designed for trucks with 50,000 GVWR
- Direct mount pump
- 26.5 gallon reservoir
- One 7" 4 stage cylinder 156" stroke
- For 18' and 19' body lengths
- 45 to 50 degree dump angle
- 7" longitudinal recommended
- Weight 1085 lbs.

Model 74156T

Twin Telescopic

4250

- For trucks with 102" CA
- Designed for trucks with 25,500 to 33,000 GVWR
- Direct mount pump
- 8.5 gallon reservoir
- Two 4" 2 stage cylinders 50" stroke
- For 14' body length
- 45 to 50 degree dump angle
- 6" minimum longitudinal recommended
- Weight 509 lbs.

Model 42-50 Class F

4265

- For trucks with 120" to 126" CA
- Designed for trucks with 25,500 to 33,000 GVWR
- Direct mount pump
- 8.5 gallon reservoir
- Two 4" 2 stage cylinders 65" stroke
- For 16' body length
- 45 to 50 degree dump angle
- 6" minimum longitudinal recommended
- Weight 537 lbs.

Model 42-65 Class G

4398

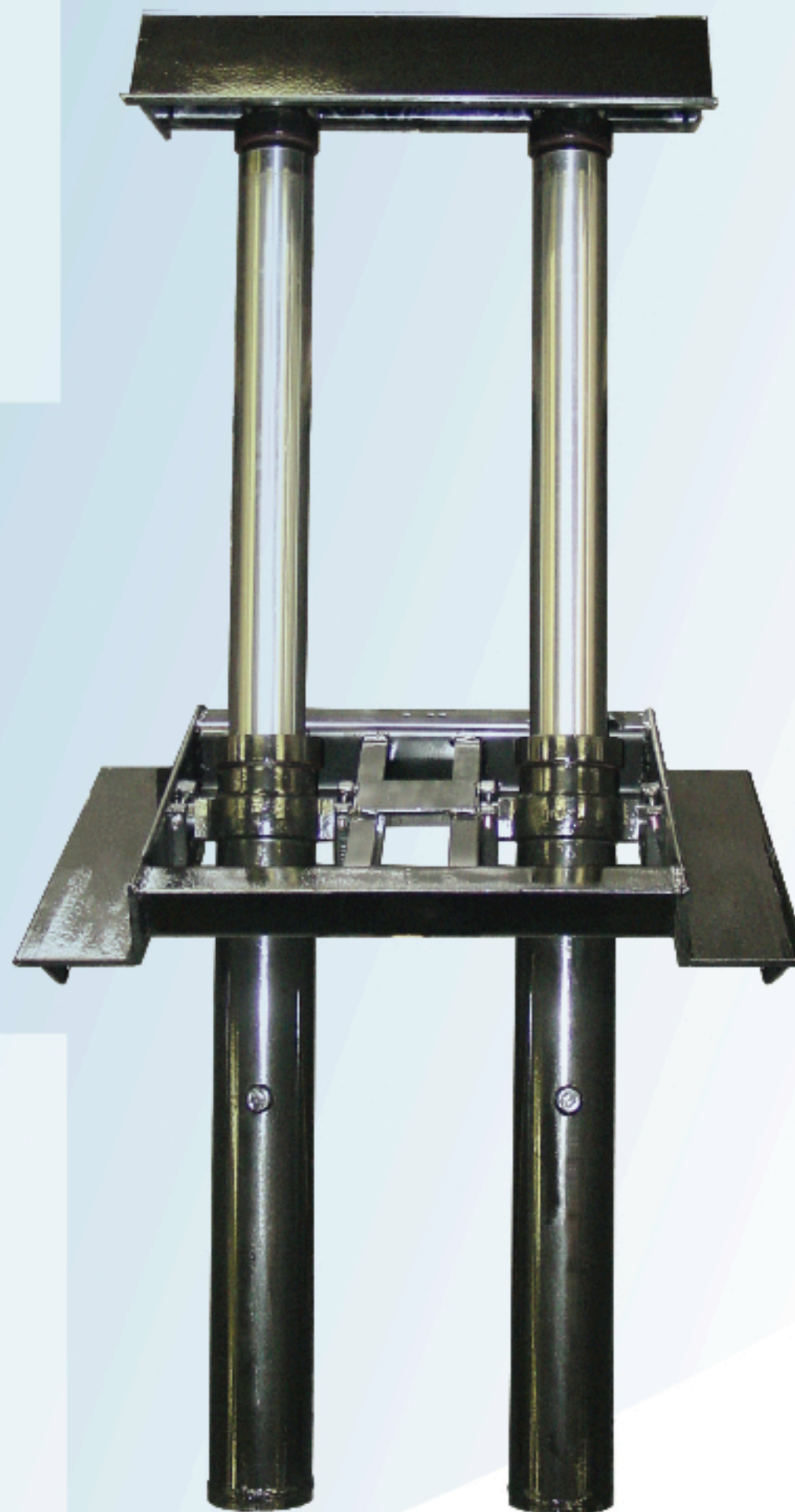
- For trucks with 132" to 168" CA
- Designed for trucks with 25,500 to 33,000 GVWR
- Direct mount pump
- 12.5 gallon reservoir
- Two 4" 3 stage cylinders 98" stroke
- For 18' to 22' body lengths
- For single axel trucks with
- 45 to 50 degree dump angle
- 7" longitudinal recommended

Model 43-98

5390

- For trucks with 126" to 168" CT
- Designed For trucks with 50,000 GVWR
- Direct mount pump
- 12.5 gallon reservoir
- Two 5" 3 stage cylinder 90" stroke
- For 18' to 24' body lengths
- 45 to 50 degree dump angle
- 7" longitudinal recommended
- Weight 788 lbs.

Model 53-90



820SF Hoist

Experience that Matters

Dedicated to perfection and continuing to lead the industry, Champion Hoist and Equipment™ has a low tolerance for defects and a strong desire for quality craftsmanship to ensure customer satisfaction. With over 35 years of excellence, Champion built hoists are well developed and industry proven. To ensure a long lasting durable product, all Champion equipment is shot blasted and powder coated black. We are a proud member of the National Truck Equipment Association.

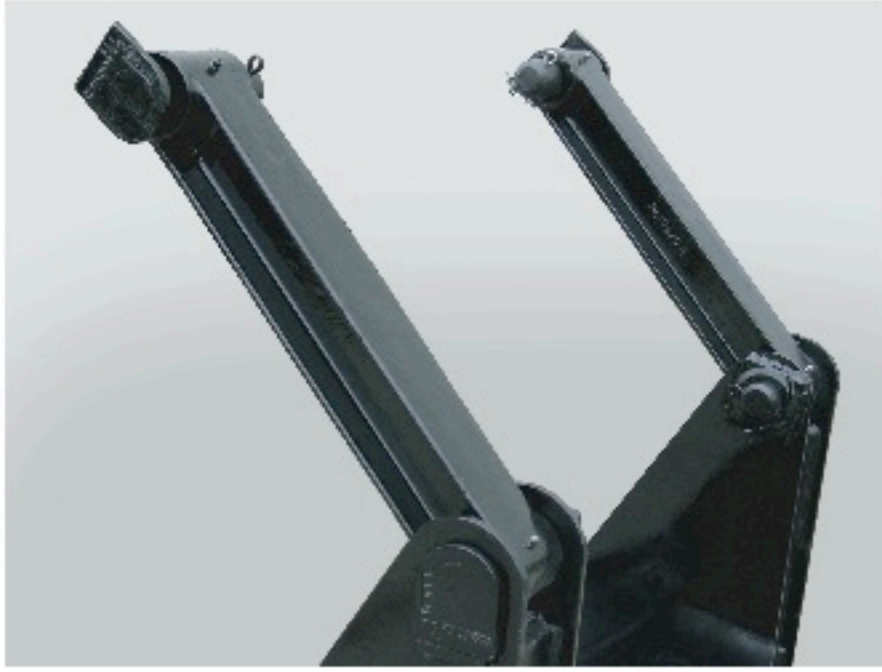


Champion built cylinders and hoists are designed to be double acting (power up and down). Our hoists are easy to install with as little truck and body modification as possible. To further ease the installation process, Champion hoists mount to the body and truck chassis using heavy duty grade 8 bolts with little or no welding needed.

With over 30 hoists offered,
Champion Hoist and Equipment™
is sure to have what you need.

Visit Champion Hoist and Equipment™
and all affiliated companies
on the world wide web.
www.championtruckhoist.com

820SF Hoist



Shown is the 820SF heavy duty cast lift arms. These arms easily attach directly to the body using 4140 grade, 1 1/2" hinge pivot. The arms have easily accessible zerk grease fittings.



This hoist is easily installed on the trucks chassis using extra heavy duty 4140 grade cast mounting brackets, With 12 grade 8 bolts and minimal welding. Installation is quick and easy.



The 820SF's hinges are cast from extra heavy duty 4140 grade steel to ensure durability. Adding to the ease of installation and durability, these hinges are welded directly to the body's longitudinals.

This Subframe
is built with A572
grade 50 high
tensile steel &
4140 grade
weldable
castings

Application Specifications

The 820SF hoist is designed for trucks with 84" CA. This hoist is perfect for 10' bodies and has a dumping angle of 50 degrees. For the most durable combination, 6" body longitudinals are recommended. All Champion manufactured hoist are Powder Coated Tough™ and are rigorously inspected by quality control to ensure top quality. The 820SF hoist is equipped with one 8" cylinder with a 20" stroke and 2000 psi. 2 1/2" chrome shaft.

820SF is NTEA rated class 60

Available Components



The G102D pump/valve combination direct mount gear pump does not require a drive line thus making it safer and more dependable. This pump has an S.A.E. "B" 2-bolt flange. 15 GPM @1200 RPM



The P22 direct gear pump is bi-rotational with side and rear ports for versatility, thus eliminating the drive line for added safety and dependability. This pump has an S.A.E. "B" 2-bolt flang. 15 GPM @1200 RPM



The SP4 valve with cable and lever control is used in conjunction with the P22 pump. This valve is easy to install and makes the hydraulic system double acting.



The 8.5 gallon box type reservoir is designed to be frame mounted intank. It hangs out of the way and is equipped with a brass wire mesh suction strainer, oil level & temperature gauge.

11/09

Champion Hoist and Equipment™ is an affiliate of



Champion Hoist and Equipment™

200 Champion Drive

Dunn, NC 28334

(910) 897-4995 Fax (910) 897-7306

**POWDER
COATED
PRIMER**



826SF Hoist

Experience that Matters

Dedicated to perfection and continuing to lead the industry, Champion Hoist and Equipment™ has a low tolerance for defects and a strong desire for quality craftsmanship to ensure customer satisfaction. With over 35 years of excellence, Champion built hoists are well developed and industry proven. To ensure a long lasting durable product, all Champion equipment is shot blasted and powder coated black. We are a proud member of the National Truck Equipment Association.



This hoist is designed for municipal applications with central hydraulic systems.

Champion built cylinders and hoists are designed to be double acting (power up and down). Our hoists are easy to install with as little truck and body modification as possible. To further ease the installation process, Champion hoists mount to the body and truck chassis using heavy duty grade 8 bolts with little or no welding needed.

With over 30 hoists offered, Champion Hoist and Equipment™ is sure to have what you need.

Visit Champion Hoist and Equipment™ and all affiliated companies on the world wide web.
www.championtruckhoist.com

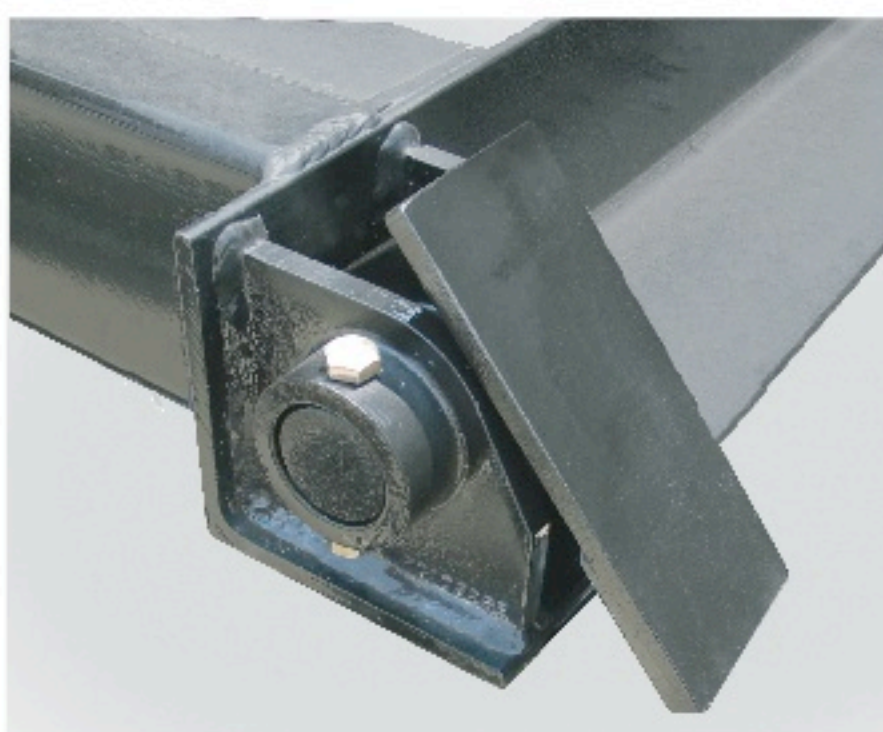
826SF Hoist



Shown is the 826SF heavy duty cast lift arms. These arms easily attach directly to the body using 4140 grade, 1 1/2" pivot pins which are bolted in place with grade 8 bolts.



This hoist is easily installed to the trucks chassis using extra heavy duty 4140 grade cast mounting brackets. With 14 grade 8 bolts and minimal welding, installation is quick and easy.



The 826SF's hinges are cast from extra heavy duty 4140 grade steel to ensure durability. Adding to the ease of installation and durability, these hinges are bolted then welded to the bodies longitudinals

This Subframe
is built with A572
grade 50 high
tensile steel &
4140 grade
weldable
castings

Application Specifications

The 826SF hoist is designed for trucks with 84" to 102" CA. This hoist is perfect for 10' to 12' bodies and has a dumping angle of 50 degrees. For the most durable combination, 7" body longitudinals are recommended. All Champion manufactured hoist are Powder Coated Tough™ and are rigorously inspected by quality control to ensure top quality. The 826SF hoist is equipped with one 8" cylinder with a 26" stroke and 2000 psi. 2 3/4" chrome shaft.

The 826SF Hoist is
equivalent to 60

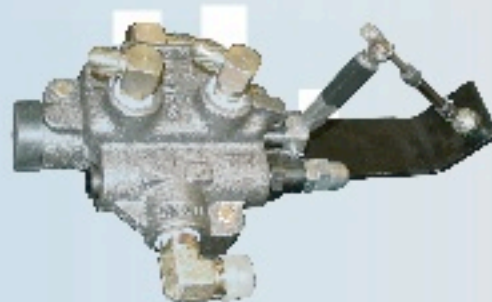
Available Components



The G102D pump/valve combination direct mount gear pump does not require a drive line thus making it safer and more dependable. This pump has an S.A.E. "B" 2-bolt flange. 15 GPM @1200 RPM



The P22 direct gear pump is bi-rotational with side and rear ports for versatility, thus eliminating the drive line for added safety and dependability. This pump has an S.A.E. "B" 2-bolt flang. 15 GPM @1200 RPM



The SP4 valve with cable and lever control is used in conjunction with the P22 pump. This valve is easy to install and makes the hydraulic system double acting.



The 8.5 gallon box type reservoir is designed to be frame mounted inboard. It hangs out of the way and is equipped with a brass wire mesh suction strainer, oil level & temperature gauge.

Champion Hoist and Equipment™
200 Champion Drive
Dunn, NC 28334
(910) 897-4995 Fax (910) 897-7306

Champion Hoist and Equipment™ is an affiliate of



8/17/06

**POWDER
COATED
PRIMER**

834SF Hoist (Super Single)



Experience that Matters

Dedicated to perfection and continuing to lead the industry, Champion Hoist and Equipment™ has a low tolerance for defects and a strong desire for quality craftsmanship to ensure customer satisfaction. With over 35 years of excellence, Champion built hoists are well developed and industry proven. To ensure a long lasting durable product, all Champion equipment is shot blasted and powder coated black. We are a proud member of the National Truck Equipment Association.

Champion built cylinders and hoists are designed to be double acting (power up and down). Our hoists are easy to install with as little truck and body modification as possible. To further ease the installation process, Champion hoist mount to the body and truck chassis using heavy duty grade 8 bolts with little or no welding needed.

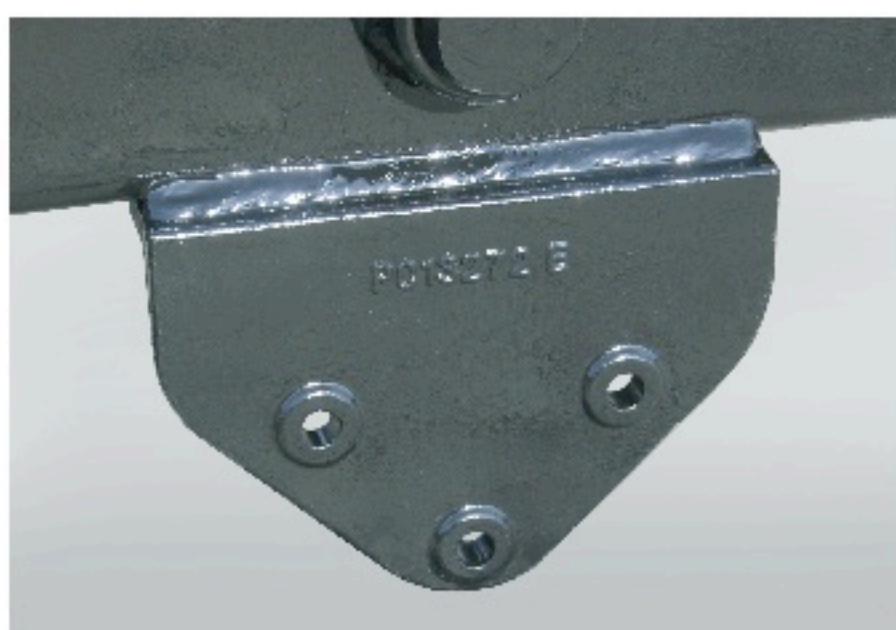
With over 30 hoists offered, Champion Hoist and Equipment™ is sure to have what you need.

Visit Champion Hoist and Equipment™ and all affiliated companies on the world wide web.
www.championtruckhoist.com

834SF Hoist



Shown is the 834SF heavy duty cast lift arms. These arms easily attach directly to the body using 4140 grade, 1 1/2" pivot pins which are bolted in place with grade 8 bolts.



This hoist is easily installed to the trucks chassis using extra heavy duty 4140 grade cast mounting brackets. With 18 grade 8 bolts and minimal welding, installation is quick and easy.



The 834SF's hinges are cast from extra heavy duty 4140 grade steel to ensure durability. Adding to the ease of installation and durability, these hinges are bolted then welded to the bodies longitudinals.

This Subframe is built with A572 grade 50 high tensile steel & 4140 grade weldable castings

Application Specifications

The 834SF hoist is designed for trucks with 108" to 120" CT. This hoist is perfect for 13' to 15' bodies and has a dumping angle of 50 degrees. For the most durable combination, 7" body longitudinals are recommended. All Champion manufactured hoist are Powder Coated Tough™ and are rigorously inspected by quality control to ensure top quality. The 834SF hoist is equipped with one 8" cylinder with a 34" stroke and 2000 psi. 2 3/4" chrome shaft.

Equivalent to class 80

Available Components



The C102D direct mount gear pump does not require a drive line thus making it safer and more dependable. This pump has an S.A.E. "B" 4-bolt flange and is used for heavy duty hoists. 25 GPM @ 1200 RPM



The 30 gallon frame mounted reservoir is used with larger hoist applications for its large capacity. It features an outside level / temperature indicator and an intank filtration system that can only be found in a Champion built reservoir. The unit mounts easily to the outside of the truck chassis.

Champion Hoist and Equipment™ is an affiliate of



Champion Hoist and Equipment™
200 Champion Drive
Dunn, NC 28334
(910) 897-4995 Fax (910) 897-7306

8/17/06

816SF Hoists

Experience that Matters

Dedicated to perfection and continuing to lead the industry, Champion Hoist and Equipment™ has a low tolerance for defects and a strong desire for quality craftsmanship to ensure customer satisfaction. With over 35 years of excellence, Champion built hoists are well developed and industry proven. To ensure a long lasting durable product, all Champion equipment is shot blasted and powder coated black. We are a proud member of the National Truck Equipment Association.



Champion built cylinders and hoists are designed to be double acting (power up and down). Our hoists are easy to install with as little truck and body modification as possible. To further ease the installation process, Champion hoists mount to the body and truck chassis using heavy duty grade 8 bolts with little or no welding needed.

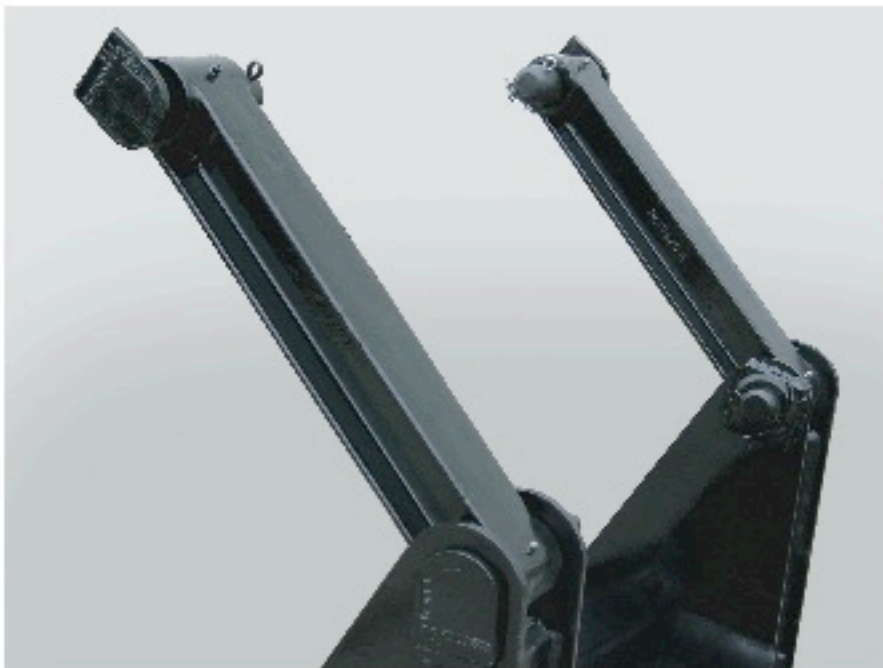
With over 30 hoists offered,
Champion Hoist and Equipment™
is sure to have what you need.

Visit Champion Hoist and Equipment™
and all affiliated companies
on the world wide web.
www.championtruckhoist.com

816SF Hoist



This hoist is easily installed on the trucks chassis using extra heavy duty 4140 grade cast mounting brackets, with 12 grade 8 bolts and minimal welding. Installation is quick and easy.



Shown is the 816SFs heavy duty cast lift arms. These arms easily attach directly to the body using 4140 grade, 1 1/2" pivot pins. The arms have easily accessible zerkl grease fittings.



The 816SFs hinges are cast from extra heavy duty 4140 grade steel to ensure durability. Adding to the ease of installation and durability, these hinges are welded directly to the body's main runners.

This Subframe
is built with A572
grade 50 high
tensile steel &
4140 grade
weldable
castings

Application Specifications

This hoist is perfect for 9' to 10' bodies and has a dumping angle of 50 degrees. The 816SF hoist is designed for trucks with 72"- 84" CA. For the most durable combination, 6" body longitudinals are recommended. These hoist are equipped with one 8" cylinder with a 16" stroke and 2 1/2" chrome shaft. All Champion manufactured hoist are Powder Coated Tough™ and are rigorously inspected by quality control to ensure top quality

816SF is NTEA rated to class 50

Available Components

The G102D pump/valve combination direct mount gear pump does not require a drive line thus making it safer and more dependable. This pump has an S.A.E. "B" 2-bolt flange. 15 GPM @1200 RPM



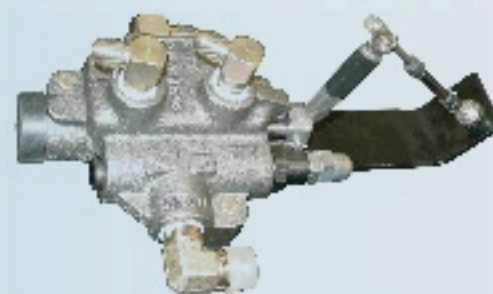
The P22 direct gear pump is bi-rotational with side and rear ports for versatility, thus eliminating the drive line for added safety and dependability. This pump has an S.A.E. "B" 2-bolt flange. 15 GPM @1200 RPM



The 8.5 gallon box type reservoir is designed to be frame mounted. It hangs out of the way and is equipped with a brass wire mesh suction strainer, oil level & temperature gauge.



The SP4 valve with cable and lever control is used in conjunction with the P22 pump. This valve is easy to install and makes the hydraulic system double acting.



11/09

Champion Hoist and Equipment™ is an affiliate of



Champion Hoist and Equipment™
200 Champion Drive
Dunn, NC 28334
(910) 897-4995 Fax (910) 897-7306



**POWDER
COATED
PRIMER**



U624A Hoist

Experience that Matters

If you're in the market for a hoist, look no further. Champion Hoist and Equipment™ has a low tolerance for defects and a strong desire for quality craftsmanship to ensure customer satisfaction. Dedicated to perfection and continuing to lead the industry with over 35 years of excellence, Champion built hoists are well developed and industry proven. Champion built equipment is shot blasted and powder coated black to ensure a long lasting durable product. We are a proud member of the National Truck Equipment Association.

**All Champion hoists
are NTEA rated**

All mounting angles
will be shipped loose.



This hoist has an NTEA rating of class 30

The U624A is recommended for 10,000 lbs. to 19,500 lbs. GVWR rated chassis. Any other application is not recommended.

This hoist only weighs 545 lbs. That is 240 lbs. lighter than a comparably rated conversion hoist with a full subframe.

With over 30 hoists offered,
Champion Hoist and Equipment™
is sure to have what you need.

Visit Champion Hoist and Equipment™
and all affiliated companies
on the world wide web.
www.championtruckhoist.com

**POWDER
COATED
PRIMER**



U720D Hoist

Experience that Matters

Dedicated to perfection and continuing to lead the industry, Champion Hoist and EquipmentTM has a low tolerance for defects and a strong desire for quality craftsmanship to ensure customer satisfaction. With over 35 years of excellence, Champion built hoists are well developed and industry proven. To ensure a long lasting durable product, all Champion equipment is shot blasted and powder coated black. We are a proud member of the National Truck Equipment Association.



Champion built cylinders and hoists are designed to be double acting (power up and down). Our hoists are easy to install with as little truck and body modification as possible. To further ease the installation process, Champion hoists mount to the body and truck chassis using heavy duty grade 8 bolts with little or no welding needed.

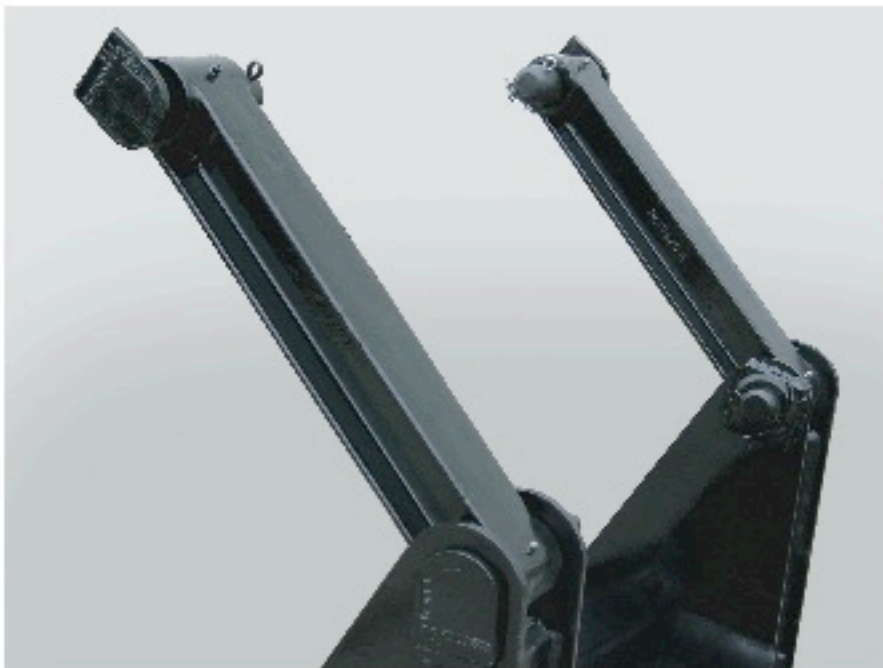
With over 30 hoists offered,
Champion Hoist and EquipmentTM
is sure to have what you need.

Visit Champion Hoist and EquipmentTM
and all affiliated companies
on the world wide web.
www.championtruckhoist.com

U720D Hoist



This hoist is easily installed on the trucks chassis using extra heavy duty 4140 grade cast mounting brackets, with 12 grade 8 bolts and minimal welding. Installation is quick and easy.



Shown is the U720Ds heavy duty cast lift arms. These arms easily attach directly to the body using 4140 grade, 1 1/2" pivot pivot. The arms have easily accessible zerck grease fittings.



The U720Ds hinges are cast from extra heavy duty 4140 grade steel to ensure durability. Adding to the ease of installation and durability, these hinges are welded directly to the body's longitudinals

This Subframe
is built with A572
grade 50 high
tensile steel &
4140 grade
weldable
castings

Application Specifications

This hoist is perfect for 8' to 10' bodies and has a dumping angle of 50 degrees. The U720D hoists are designed for trucks with 60"- 84" CA. For the most durable combination, 6" body longitudinals are recommended. These hoist are equipped with one 7" cylinder with a 16" stroke and 2 1/2" chrome shaft. All Champion manufactured hoist are Powder Coated Tough™ and are rigorously inspected by quality control to ensure top quality

U720D equivalent to class 40

Available Components



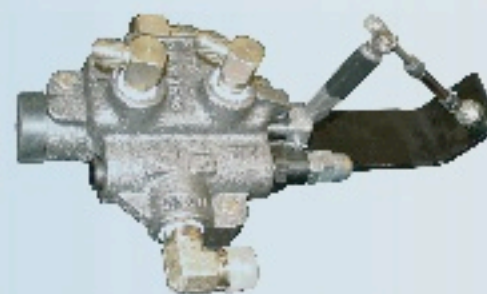
The G102D pump/valve combination direct mount gear pump does not require a drive line thus making it safer and more dependable. This pump has an S.A.E. "B" 2-bolt flange. 15 GPM @1200 RPM



The P22 direct gear pump is bi-rotational with side and rear ports for versatility, thus eliminating the drive line for added safety and dependability. This pump has an S.A.E. "B" 2-bolt flang. 15 GPM @1200 RPM



The 8.5 gallon box type reservoir is designed to be frame mounted inframe. It hangs out of the way and is equipped with a brass wire mesh suction strainer, oil level & temperature gauge.



The SP4 valve with cable and lever control is used in conjunction with the P22 pump. This valve is easy to install and makes the hydraulic system double acting.

Champion Hoist and Equipment™

200 Champion Drive

Dunn, NC 28334

(910) 897-4995 Fax (910) 897-7306

8/17/06

Champion Hoist and Equipment™ is an affiliate of



U720D Hoist

Experience that Matters

Dedicated to perfection and continuing to lead the industry, Champion Hoist and Equipment™ has a low tolerance for defects and a strong desire for quality craftsmanship to ensure customer satisfaction. With over 35 years of excellence, Champion built hoists are well developed and industry proven. To ensure a long lasting durable product, all Champion equipment is shot blasted and powder coated black. We are a proud member of the National Truck Equipment Association.



Champion built cylinders and hoists are designed to be double acting (power up and down). Our hoists are easy to install with as little truck and body modification as possible. To further ease the installation process, Champion hoists mount to the body and truck chassis using heavy duty grade 8 bolts with little or no welding needed.

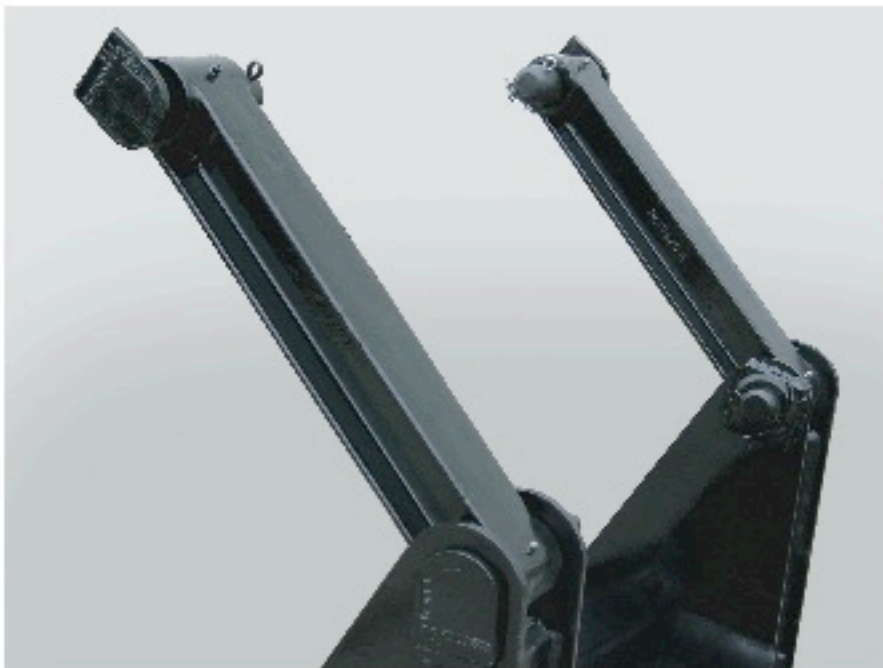
With over 30 hoists offered,
Champion Hoist and Equipment™
is sure to have what you need.

Visit Champion Hoist and Equipment™
and all affiliated companies
on the world wide web.
www.championtruckhoist.com

U720D Hoist



This hoist is easily installed on the trucks chassis using extra heavy duty 4140 grade cast mounting brackets, with 12 grade 8 bolts and minimal welding. Installation is quick and easy.



Shown is the U720Ds heavy duty cast lift arms. These arms easily attach directly to the body using 4140 grade, 1 1/2" pivot pivot. The arms have easily accessible zerck grease fittings.



The U720Ds hinges are cast from extra heavy duty 4140 grade steel to ensure durability. Adding to the ease of installation and durability, these hinges are welded directly to the body's longitudinals

This Subframe
is built with A572
grade 50 high
tensile steel &
4140 grade
weldable
castings

Application Specifications

This hoist is perfect for 8' to 10' bodies and has a dumping angle of 50 degrees. The U720D hoists are designed for trucks with 60"- 84" CA. For the most durable combination, 6" body longitudinals are recommended. These hoist are equipped with one 7" cylinder with a 16" stroke and 2 1/2" chrome shaft. All Champion manufactured hoist are Powder Coated Tough™ and are rigorously inspected by quality control to ensure top quality

U720D equivalent to class 40

Available Components



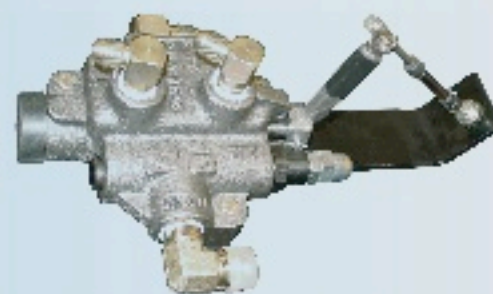
The G102D pump/valve combination direct mount gear pump does not require a drive line thus making it safer and more dependable. This pump has an S.A.E. "B" 2-bolt flange. 15 GPM @1200 RPM



The P22 direct gear pump is bi-rotational with side and rear ports for versatility, thus eliminating the drive line for added safety and dependability. This pump has an S.A.E. "B" 2-bolt flang. 15 GPM @1200 RPM



The 8.5 gallon box type reservoir is designed to be frame mounted inframe. It hangs out of the way and is equipped with a brass wire mesh suction strainer, oil level & temperature gauge.



The SP4 valve with cable and lever control is used in conjunction with the P22 pump. This valve is easy to install and makes the hydraulic system double acting.

Champion Hoist and Equipment™

200 Champion Drive

Dunn, NC 28334

(910) 897-4995 Fax (910) 897-7306

8/17/06

Champion Hoist and Equipment™ is an affiliate of



FREIGHT NOT
INCLUDED IN
PRICE OF UNIT.
FREIGHT WILL
BE BILLED UPON
PURCHASE.