

Premier Fuel Tanks for Every Need

Our tank systems are crafted with the finest U.S. materials, including 12- and 14-gauge high-yield U.S. aluminized steel (powder coated for a durable finish) or aluminum diamond plate.



Replacement Fuel Tanks

Eliminate half your fuel stops by replacing the stock fuel tank with a high-capacity Transfer Flow replacement fuel tank system that doesn't sacrifice bed space or ground clearance.



Auxiliary Fuel Tanks

Extend your range with additional fuel in the bed of your truck. Our TRAX 4™ computer-controlled auxiliary fuel tank systems automatically transfer fuel to the main tank.



Refueling Tanks

Refuel vehicles and equipment with an in-bed transfer fuel tank. Department of Transportation (DOT) legal, our refueling tanks are engineered for gas, diesel, ethanol/methanol, and kerosene.



Tool Box Tank Combos

For extra fuel and extra storage, we have auxiliary and refueling tool box combination systems. Each tool box fuel tank is equipped with a secure locking handle to keep your tools and gear safe.



Retrofit Filler Neck Kits

Whether for a pickup box delete, a utility body, or a cab chassis work truck, each filler neck kit is engineered for a specific vehicle to ensure a perfect fit and easy installation.

Accessories

For additional convenience, we offer a number of fuel tank accessories including locking fuel caps, diesel biocide, fuel filters, digital fuel meters, tie down brackets, and more.

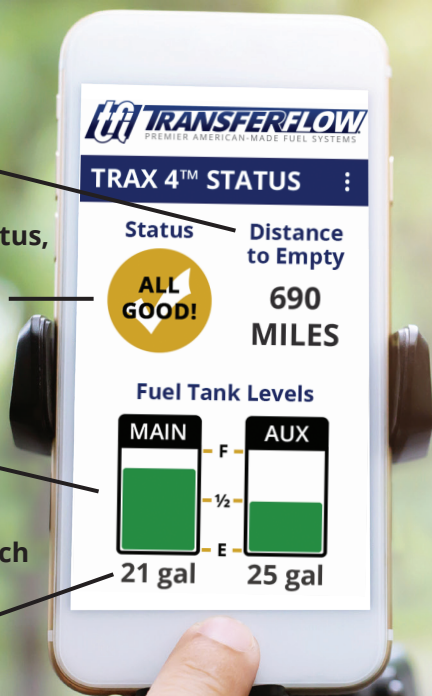
For Worry-free Fuel Transfers, You Can Trust Transfer Flow's TRAX 4™ Fuel Management System

Know how many miles to go until empty

Shows operating status, including when fuel is being transferred

Fuel levels shown in each tank

Gallons shown in each tank (or you can choose to show percentage)



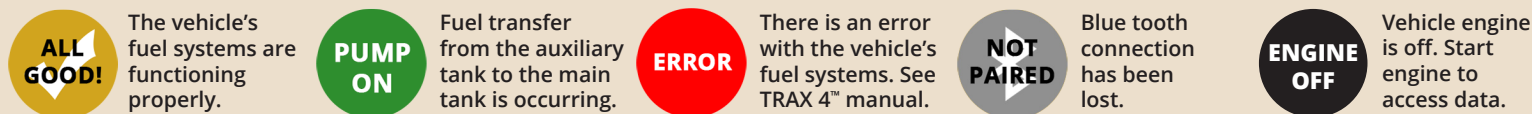
The next generation of our auxiliary fuel tank operating system is here! TRAX 4™ is our computer-controlled, fuel management system that transfers fuel from a Transfer Flow auxiliary fuel tank to your pickup's main fuel tank. TRAX 4™ comes with all our in-bed auxiliary fuel tanks, including our auxiliary tank and tool box combos.

Based on the capacity of your pickup's main fuel tank and the capacity of the Transfer Flow auxiliary fuel tank, the TRAX 4™ system will transfer fuel at predetermined levels while the vehicle is in operation.

Want to know the status of your on-board fuel systems? Simply download the TRAX 4™ mobile app to your smart phone and enter your vehicle and fuel system information. You'll be able to monitor your pickup's fuel capacity in no time! During fuel transfer, the message "PUMP ON" will be displayed on your smart phone. You also have the option of displaying either the gallons or the percentage of fuel in each tank.

Phone and phone holder not included.

TRAX 4™ Status Guide



OPTIONAL ITEM

Monitor the Fuel Level of Your Auxiliary Fuel Tank with an In-Cab Display

If you prefer not to use our TRAX 4™ app with your auxiliary tank but still want to know how much fuel is in the auxiliary tank, consider our in-cab fuel level monitor LCD. The LCD shows the fuel level of the auxiliary tank with an easy-to-read bar graph that decreases when fuel is transferred to the pickup's main fuel tank. This item is sold separately.



Fuel Level Monitor LCD (shown actual size)
part no. 040-01-17100

Gravity-Fed Systems are Unsafe and Unlawful

Due to safety, environmental, and legal concerns, Transfer Flow does not endorse, design, install, or sell gravity-fed fuel systems because of their inherent risks. With gravity-fed systems, if the valve, connectors, or fuel line malfunction (or you simply forget to close the valve), there's nothing to prevent over-filling the fuel tank and causing dangerous fuel spills. By installing a gravity-fed system, you are disabling the safety features of your vehicle's fuel system. Transfer Flow fuel tanks are never to be used in conjunction with gravity-fed systems.



Shown with optional spray-on textured coat

Long hauls are worry-free with additional onboard fuel!

Transfer Flow in-bed auxiliary fuel tanks provide a worry-free, no-hassle experience with our patented TRAX 4™ computer-controlled fuel management system.



Each of our auxiliary fuel tanks come with our TRAX 4™ system and mobile app that shows fuel levels in percentages or gallons, as well as the operational status of the system.

Our AutoTrans® technology is specific for each vehicle and auxiliary tank model, and automatically transfers fuel from the in-bed tank to the main tank at specified fuel levels.

Our in-bed auxiliary fuel tanks are available in 37-, 40-, 50-, 75-, and 100-gallons. Each fuel tank comes with our TRAX 4™ operating system and mobile app that shows fuel levels in percentages or gallons, as well as the operational status of the system.

FEATURES & BENEFITS

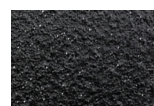
- Robot-welded seams provide extraordinary strength
- Comes complete with all components for installation
- TRAX 4™ computer-controlled automatic fuel transfers for worry-free operation
- Built from ReliaSteel®, high-yield U.S. aluminized steel, for superior durability and strength
- Baffled to prevent fuel sloshing
- 6-year, unlimited mile warranty



NOTES

- ✖ 2010—12 Ram Mega Cab and Crew Cab short bed pickup with single rear wheels require a filler neck (part no. 050-01-15461).
- ✚ 2013—20 Ram Mega Cab and Crew Cab short bed pickups require a mounting bracket kit (part no. 020-01-16790).
- ✚ This tank will not fit on 2013—18 Ram short bed pickups with 5th Wheel Prep Package.
- ◆ 2016—20 Chevy Colorado pickups require auxiliary vent line kit (part no. 020-01-16777).
- ✦ Does not fit on 2020 Ram short bed pickup.

OPTIONAL UPGRADES & ACCESSORIES



Spray-On Coat
(For diesel only)



TRAX 4™ Fuel Level Monitor
040-01-17100



Killlem® Biocide
070-CH-33291



Locking Fuel Cap
070-GC-33572



- Fits under most retractable bed covers

Fits: 2008—2020 Dodge/Ram, Chevy/GM, Ford
Fuel: Diesel
Ship Weight: 142 lb.
Dimensions: 53" L × 21 1/8" W × 18" H
Part Number (Black Powder Coat): 080-01-16180
Part Number (Textured Coat): 080-BL-16180
Notes: ✕ +

SHORT AND
LONG BED

37
GALLON



- Fits under most tonneau covers
- Works with 5th wheel prep packages
- Fits Chevy Colorado & GMC Canyon diesel trucks

Fits: 2008—2020 Dodge/Ram, Chevy/GM, Ford
Fuel: Diesel
Ship Weight: 132 lb.
Dimensions: 48" L × 19" W × 19 3/8" H
Part Number (Black Powder Coat): 080-01-16637
Part Number (Textured Coat): 080-BL-16637
Notes: ✕ ☆ ◆

SHORT AND
LONG BED

40
GALLON



- Fits under most tonneau bed covers

**50
GALLON**

**SHORT AND
LONG BED**

Fits: 2008—2020 Dodge/Ram, Chevy/GM, Ford

Fuel: Diesel

Ship Weight: 155 lb.

Dimensions: 60 3/4" L × 18 1/2" W × 18" H

Part Number (Black Powder Coat): 080-01-16625

Part Number (Textured Coat): 080-BL-16625

Notes: ✕ +



**75
GALLON**

**SHORT AND
LONG BED**

Fits: 2008—2020 Dodge/Ram, Chevy/GM, Ford

Fuel: Diesel

Ship Weight: 182 lb.

Dimensions: 60 3/4" L × 21" W × 22 1/2" H

Part Number (Black Powder Coat): 080-01-16755

Part Number (Textured Coat): 080-BL-16755

Notes: ✕ + ✧



100
GALLON

LONG BED

Fits: 2008—2020 Dodge/Ram, Chevy/GM, Ford

Fuel: Diesel

Ship Weight: 264 lb.

Dimensions: 60 3/4" L × 27 1/4" W × 22 3/8" H

Part Number (Black Powder Coat): 080-01-16758

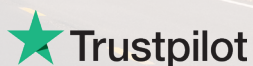
Part Number (Textured Coat): 080-BL-16758

Notes: ✕ +

// I love my Transfer Flow auxiliary fuel tank. The ordering process was very simple, and I was able to have it delivered to the installer. All of the people I talked with were extremely professional and pleasant to deal with. //



by VERNON THOMAS





Fuel up equipment, vehicles, and off-road toys with a legal fuel station in the bed of your truck.

Ditch the fuel cans when you have a refueling station in your truck bed that's perfect for refueling vehicles, off-road toys, and equipment.

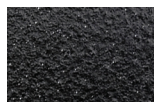
Transfer Flow refueling tank systems are Department of Transportation (DOT) legal to carry and transfer gasoline, diesel, ethanol, methanol, and kerosene.

The easy-to-use hose purging feature pulls any remaining fuel left in the hose back into the refueling tank to eliminate fuel messes and stretch your extra fuel capacity even further.

OPTIONAL UPGRADES & ACCESSORIES



Husky® Fueling Swivel
070-FS-32685



Spray-On Coat
(For diesel only)



Killlem® Biocide
070-CH-33291



GPI® Fuel Meter
020-01-13959



Tie Down Brackets
020-01-16384



Fuel Filter Kit
020-01-13958



Locking Fuel Cap
070-GC-34074



Fuel Gauge
Call for part number

FEATURES & BENEFITS

- Comes with 12-volt GPI fuel pump, 12 ft. hose, nozzle, fuel cap, wiring harness with cab-mounted power switch, and mounting hardware
- DOT legal for gasoline, diesel, methanol, ethanol, and kerosene
- Built from 12-gauge ReliaSteel®, high-yield U.S. aluminized steel, for superior durability and strength
- Powder coated black for durable satin finish
- Easy-to-use hose-purge feature eliminates messes
- Pumps up to 15 gallons per minute (8 GPM with 40-gallon refueling tank)
- Baffled to prevent fuel sloshing
- 6-year, unlimited mile warranty



NOTES

- ✚ This tank will not fit on 2013—20 Ram short bed pickups with 5th Wheel Prep Package.
- ✚ 2013—20 Ram Mega Cab short bed pickups require a mounting bracket kit (part no. 020-01-16790).



• Fits under most tonneau bed covers

Shown with locking fuel cap upgrade



**SHORT AND
LONG BED**

Fits: All Light and Heavy Duty Trucks

Fuel: Gasoline, Diesel, Kerosene

Ship Weight: 190 lb.

Dimensions: 40" L × 23" W × 17 1/8" H

Part Number (Black Powder Coat): 080-01-16206

Part Number (Textured Coat): 080-BL-16206

Note: +



Shown with locking fuel cap upgrade



**SHORT AND
LONG BED**

Fits: All Full-Size Trucks

Fuel: Gasoline, Diesel, Kerosene, Methanol/Ethanol

Ship Weight: 206 lb.

Dimensions: 54 3/8" L × 15 1/2" W × 24" H

Part Number (Black Powder Coat): 080-01-09417

Part Number (Textured Coat): 080-BL-09417

Notes: + ★

FUEL PUMP OPTIONS

Methanol/Ethanol Pump:

080-MP-09417



Shown with locking fuel cap upgrade

**82
GALLON**

**SHORT AND
LONG BED**

Fits: All Full-Size Trucks

Fuel: Gasoline, Diesel, Kerosene, Methanol/Ethanol

Ship Weight: 251 lb.

Dimensions: 47 3/4" L × 22 5/8" W × 26 5/8" H

Part Number (Black Powder Coat): 080-01-09420

Part Number (Textured Coat): 080-BL-09420

Note: +

FUEL PUMP OPTIONS

Methanol/Ethanol Pump:

080-MP-09420



Shown with locking fuel cap upgrade

• Available with tool box (page 19)

**100
GALLON**

LONG BED

Fits: All Full-Size Trucks

Fuel: Gasoline, Diesel, Kerosene, Methanol/Ethanol

Ship Weight: 329 lb.

Dimensions: 53 3/4" L × 35 7/8" W × 27 5/8" H

Part Number (Black Powder Coat): 080-01-09418

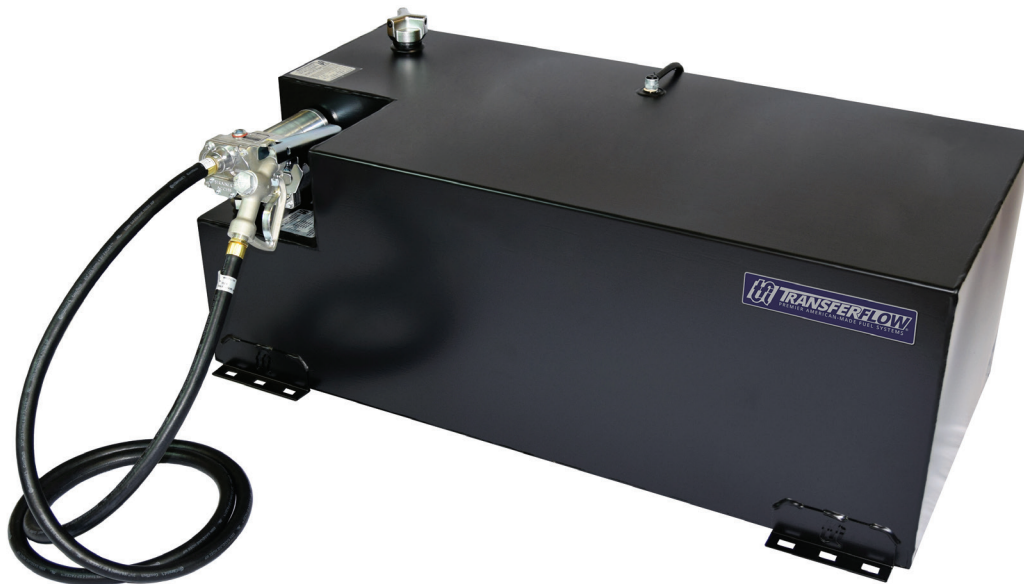
Part Number (Textured Coat): 080-BL-09418

Note: +

FUEL PUMP OPTIONS

Methanol/Ethanol Pump:

080-MP-09418



Shown with locking fuel cap upgrade

**109
GALLON**

LONG BED

Fits: All Full-Size Trucks

Fuel: Gasoline, Diesel, Aviation, Kerosene, Methanol/Ethanol

Ship Weight: 297 lb.

Dimensions: 54 3/4" L x 30" W x 22 5/8" H

Part Number (Black Powder Coat): 080-01-09416

Part Number (Textured Coat): 080-BL-09416

Note: +

FUEL PUMP OPTIONS

Methanol/Ethanol Pump:

080-MP-09416



Shown with locking fuel cap upgrade

• **Holds two types of fuel**

**50/50
GALLON**

**SHORT AND
LONG BED**

Fits: All Full-Size Trucks

Fuel: Gasoline, Diesel, Aviation, Kerosene, Methanol/Ethanol

Ship Weight: 332 lb.

Dimensions: 47 3/8" L x 31" W x 24 3/8" H

Part Number (Black Powder Coat): 080-01-13244

Part Number (Textured Coat): 080-BL-13244

Note: +

FUEL PUMP OPTIONS

Methanol/Ethanol Pump:

080-MP-13244



Enjoy the best of both worlds with extra fuel *and* extra storage!

The all-in-one auxiliary fuel tank and tool box combos are computer-controlled by our TRAX 4™ operating system for worry-free fuel transfers.



Each of our auxiliary fuel tanks come with our TRAX 4™ system and mobile app that shows fuel levels in percentages or gallons, as well as the operational status of the system.

Easily load your tools, supplies, and equipment in the locking storage compartment to keep them safe, dry, and secure.

The 40- and 50- gallon fuel tank and tool box combos sit nearly flush with most pickup truck bed rails while the versatile 70-gallon model sits on the bed rails and adjusts to the depth of the pickup bed.

You can also add refueling capabilities to your Transfer Flow auxiliary fuel tank and tool box combo with the addition of our Refueling Kit!

FEATURES & BENEFITS

- TRAX 4™ computer-controlled automatic fuel transfers for worry-free operation with exclusive AutoTrans® technology
- Comes complete with all components for installation
- Built from high-yield U.S. aluminized steel, or aluminum diamond plate for superior durability and strength
- Gas-filled shocks for easy opening and closing
- Locking handles to keep gear secure
- Baffled to prevent fuel sloshing
- 6-year, unlimited mile warranty



NOTES

- ✖ 2010—12 Ram Mega Cab and Crew Cab short bed pickup with single rear wheels require a filler neck (part no. 050-01-15461).
- ✚ This tank will not fit on 2013—20 Ram short bed pickups with 5th Wheel Prep Package.
- ❖ Does not fit on 2020 Ram short bed pickup.

OPTIONAL UPGRADES & ACCESSORIES



TRAX 4™ Fuel Level Monitor
040-01-17100



Killem® Biocide
070-CH-33291



Locking Fuel Cap
070-GC-33572



Tie Down Brackets
020-01-16384



Refueling Kit
(40 and 50 gal.)
020-01-14539



Refueling Kit
(70 gal.)
020-01-16229



Locking Black Handles (2)
(40 and 70 gal. only)
070-HA-34379



• 6 cu. ft. of storage space

Shown with locking black handles upgrade



**SHORT AND
LONG BED**

Fits: 2008—2020 Dodge/Ram, Chevy/GM, Ford
Fuel: Diesel
Ship Weight: 202 lb.
Outside Dimensions: 59" L × 21" W × 21" H
Inside Dimensions: 59" L × 18" W × 9 3/4" H (6 cu. ft.)
Part Number (Black Powder Coat): 080-01-16188
Part Number (Textured Coat): 080-BL-16188
Notes: ✕ +

LID UPGRADE OPTIONS

Alum. Diamond Plate Lid:

080-DL-16188

Black Diamond Plate Lid:

080-BD-16188

**Black Diamond Plate Lid
on Textured Coat Tank:**

080-DB-16188



• 9 cu. ft. of storage space



LONG BED

Fits: 2008—2020 Dodge/Ram, Chevy/GM, Ford
Fuel: Diesel
Ship Weight: 236 lb.
Outside Dimensions: 61 3/4" L × 27 1/2" W × 20 1/8" H
Inside Dimensions: 61 3/4" L × 27 1/2" W × 8 3/4" H (9 cu. ft.)
Part Number: 080-01-16187
Notes: ✕ +



- 9 cu. ft. of storage space
- Patented design adjusts to truck bed depth



SHORT AND
LONG BED

Fits: 2008—2020 Dodge/Ram, Chevy/GM, Ford

Fuel: Diesel

Ship Weight: 280 lb.

Outside Dimensions: 73" L × 24 1/2" W × 23 3/4"–27 3/4" H

Inside Dimensions: 62" L × 14 1/2" W × 9 1/2"–13 1/2" H (9 cu. ft.)

Part Number (Black Powder Coat): 080-01-16063

Notes: ✕ + ✧

LID UPGRADE OPTIONS

Diamond Plate Lid:

080-DL-16063

Black Diamond Plate Lid:

080-BD-16063

“I have the 50-gallon fuel tank and tool box combo on my 2019 RAM 3500. I did not hesitate in departing on a 3,400-mile road trip with the confidence the installation was going to work and it did. Being able to stop at the best price diesel truck stops is an extra savings bonus. I would highly recommend this product.”



by LOUIE ASTORGA

★ Trustpilot



“It’s been a couple months and two long trips with my new Transfer Flow tank. Having the additional fuel makes our long road trips stress free. If you’re thinking about this, just do it. You will be very happy with your decision.”



by BRIAN

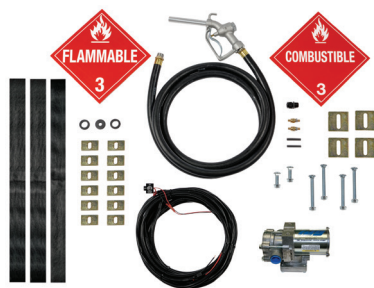
 Trustpilot



70-gallon fuel tank and tool box combo shown with optional aluminum diamond plate lid.

Secure your gear and fuel in a refueling tank and tool box combo!

We've designed a refueling station with room to keep your supplies and gear secure. The tool box is equipped with locking handles and gas-filled shocks that make it easy to open and close.



All fuel systems ship with all parts needed for installation and use.

The patented 70-gallon refueling tank and tool box combo pairs the popular over-the-rail tool box style with a versatile adjustable design that ensures the tank fits nicely with appropriate weight support.

Transfer Flow refueling tanks are Department of Transportation (DOT) legal to carry and transfer gasoline, diesel, methanol, ethanol, and kerosene, and features an easy-to-use purge function that moves remaining fuel in the hose back into the fuel tank.

FEATURES & BENEFITS

- Comes with 12-volt GPI fuel pump, 12 ft. hose, nozzle, fuel cap, wiring harness with cab-mounted power switch, and mounting hardware
- Easy-to-use hose purge feature eliminates messes
- Pumps up to 8 gallons per minute
- Built from 12- and 14-gauge ReliaSteel®, high-yield U.S. aluminized steel, for superior durability and strength
- Baffled to prevent fuel sloshing
- Gas-filled shocks for easy opening and closing
- Locking handles to keep gear secure
- 6-year, unlimited mile warranty



NOTES

- ✚ This tank will not fit on 2013–20 Ram short bed pickups with 5th Wheel Prep Package.
- ✦ Does not fit on 2020 Ram short bed pickup.

OPTIONAL UPGRADES & ACCESSORIES



Spray-On Coat
(40 gal. only)



Killlem® Biocide
070-CH-33291



Locking Black Handles (2)
(40 and 70 gal. only)
070-HA-34379



Locking Fuel Cap
(100 gal. only)
070-GC-34074



Tie Down Brackets
020-01-16384



- 6 cu. ft. of storage space

**SHORT AND
LONG BED**

**40
GALLON**

Fits: All Full-Size Trucks
Fuel: Gasoline, Diesel, Kerosene
Ship Weight: 215 lb.
Outside Dimensions: 59" L × 21" W × 21" H
Inside Dimensions: 59" L × 18" W × 9 3/4" H (6 cu. ft.)
Part Number (Black Powder Coat): 080-01-15195
Part Number (Textured Coat): 080-BL-15195
Note: +

LID UPGRADE OPTIONS
Alum. Diamond Plate Lid:
 080-DL-15195
Black Diamond Plate Lid:
 080-BD-15195



- 9 cu. ft. of storage space
- Patented design adjusts to truck bed depth

Shown with locking black handles upgrade

**SHORT AND
LONG BED**

**70
GALLON**

Fits: All Full-Size Heavy Duty Trucks
Fuel: Gasoline, Diesel, Kerosene
Ship Weight: 293 lb.
Outside Dimensions: 73" L × 24 1/2" W × 23 3/4"-27 3/4" H
Inside Dimensions: 56 3/4" L × 14 1/2" W × 9 1/2"-13 1/2" H (9 cu. ft.)
Part Number (Black Powder Coat): 080-01-16230
Note: + ❖

LID UPGRADE OPTIONS
Diamond Plate Lid:
 080-DL-16230
Black Diamond Plate Lid:
 080-BD-16230



- 9 cu. ft. of storage space

100
GALLON

LONG BED

Fits: All Full-Size Trucks

Fuel: Gasoline, Diesel, Aviation, Kerosene, Methanol/Ethanol

Ship Weight: 403 lb.

Dimensions: 53 3/4" L x 35 7/8" W x 27 5/8" H

Inside Dimensions: 50 3/4" L x 20 1/2" W x 13" H (9 cu. ft.)

Part Number (Black Powder Coat): 080-01-15457

Part Number (Textured Coat): 080-BL-15457

Note: +

FUEL PUMP OPTIONS

Methanol/Ethanol Pump:

080-MP-15457

// Had a tank installed on my other truck years ago and wanted to do the same on the new truck I recently purchased. I couldn't have hoped for anything better. //



by STEVE MILLER

★ Trustpilot



///Not only did I receive a better than expected fuel tank and tool box combo, but all and any of the parts needed to install and secure the tank were provided. Thank you again Transfer Flow. Keep up the great work!///



by JEROME AGUILERA

★ Trustpilot



Increase your fuel capacity without taking up bed space!

Our high-capacity replacement fuel tanks nearly double your fuel capacity so you can cruise without worry.

Each replacement fuel tank is made from 12-gauge ReliaSteel®, high-yield U.S. aluminized steel, and is designed to fit in the same space as the stock fuel tank. Simply remove the plastic stock fuel tank, replace it with our complete fuel system, and you're ready to hit the road.

Our replacement tanks are manufactured with internal baffles to reduce fuel sloshing, and come powder coated for a durable satin black finish.



Replacement tanks have internal baffles for extra durability and strength, and to reduce fuel slosh.

FEATURES & BENEFITS

- Tank sits above the differential, no skid plate needed
- Fits in the same space as stock fuel tank
- Fuel tank mounts inside the frame rail
- Built from 12-gauge ReliaSteel®, high-yield U.S. aluminized steel, for superior durability and strength
- Comes with straps and mounting hardware
- Powder coated for a durable satin black finish
- Baffled to prevent fuel sloshing
- 6-year, unlimited mile warranty



NOTES

- ✱ F-150's equipped with a 26-gallon stock fuel tank require a replacement sending unit (part no. 070-SE-34254).
- ⦿ F-150's with a 6 1/2 ft. bed require a Fuel Line Extension Kit (part no. 020-01-17011).
- Only fits long bed SuperCabs equipped with a 34-gallon stock tank.
- ▼ On 2004 model years, this fuel tank system is only available for GM pickups with an LLY engine. Your pickup has an LLY engine if "2" is the eighth digit of the pickup's VIN number.
- ✕ This fuel tank is not for sale within California.
- ◆ For 2016—20 model years, this tank will only fit Tundras originally equipped with a 26-gallon stock tank.

OPTIONAL UPGRADE



Spray-On Coat



Killem® Biocide
070-CH-33291



FORD PICKUP REPLACEMENT TANKS

45
GALLON

**5 1/2 & 6 1/2 FT BED
SUPERCREW**

Fits: 2018—20 Ford F-150, 2018—20 Ford F-150 Raptor

Fuel: Gasoline

Ship Weight: 186 lb.

Dimensions: 88" L × 17 5/8" W × 19" H

Part Number (Black Powder Coat): 080-01-16947

Part Number (Textured Coat): 080-BL-16947

Notes: * ○

48
GALLON

**6 1/2 FT BED
CREW CAB**

Fits: 2011—16 Ford F-250/F-350

Fuel: Diesel

Ship Weight: 171 lb.

Dimensions: 62 1/4" L × 14 1/2" W × 18 3/4" H

Part Number (Black Powder Coat): 080-01-16275

Part Number (Textured Coat): 080-BL-16275

60
GALLON

**6 1/2 FT CREW &
8 FT SUPERCAB**

Fits: 2017—20 Ford F-250/F-350

Fuel: Diesel

Ship Weight: 216 lb.

Dimensions: 72 3/4" L × 17" W × 17" H

Part Number (Black Powder Coat): 080-01-16565

Part Number (Textured Coat): 080-BL-16565

Note: ■



GM/CHEVY REPLACEMENT TANKS

45
GALLON

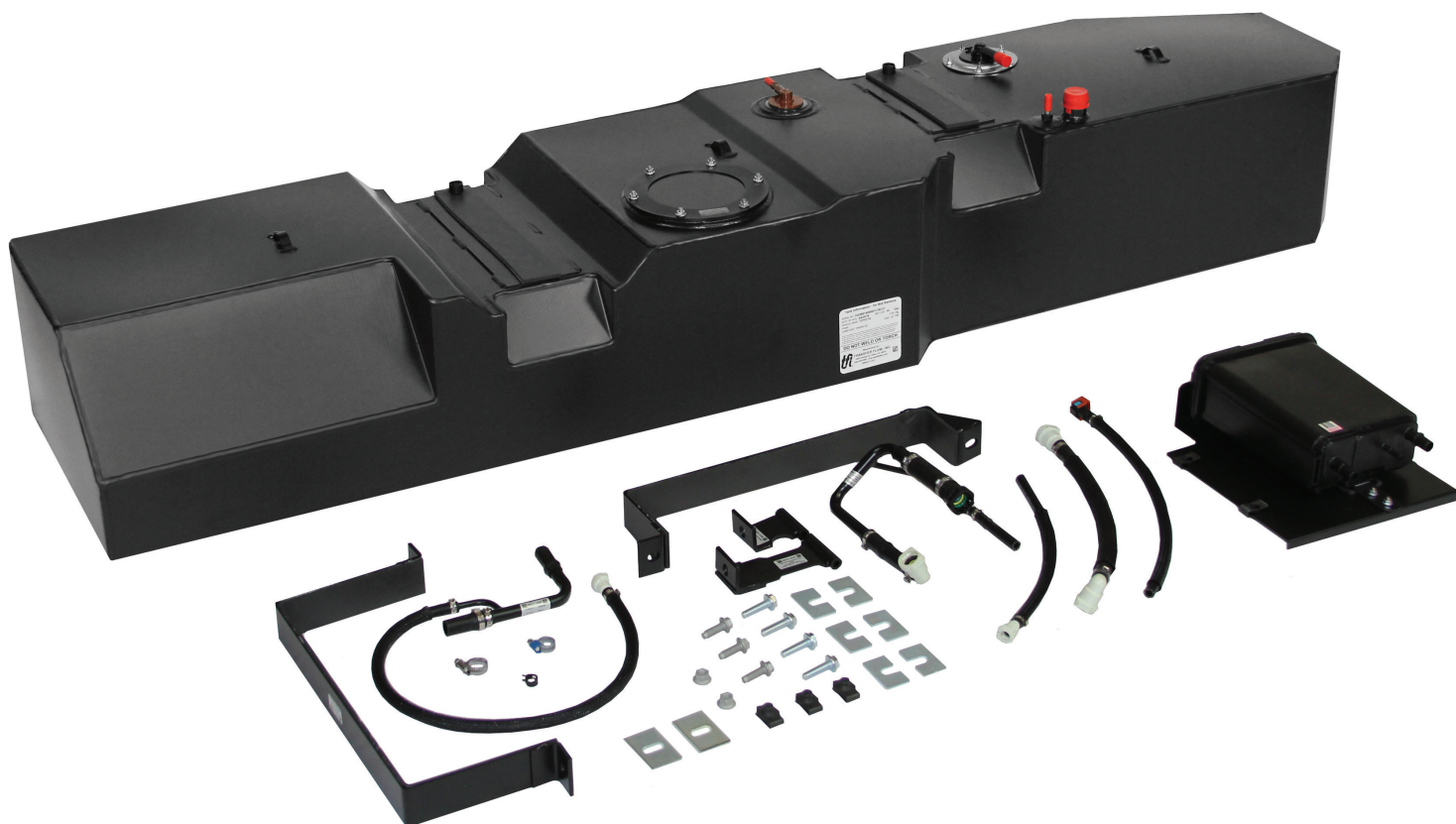
**6 1/2 FT BED
CREW/EXT CAB**

Fits: 2004—10 GM/Chevy 2500/3500
Fuel: Diesel
Ship Weight: 198 lb.
Dimensions: 76 3/4" L × 13" W × 19" H
Part Number (Black Powder Coat): 080-01-12755
Part Number (Textured Coat): 080-BL-12755
Note: ▼

55
GALLON

**6 1/2 FT BED
CREW CAB**

Fits: 2017—19 GM/Chevy 2500/3500
Fuel: Diesel
Ship Weight: 182 lb.
Dimensions: 68" L × 18" W × 20" H
Part Number (Black Powder Coat): 080-01-16786
Part Number (Textured Coat): 080-BL-16786



TOYOTA TUNDRA REPLACEMENT TANK

46
GALLON

**5 1/2, 6 1/2
AND 8 FT BED**

Fits: 2007—20 Toyota Tundra® Double Cab and CrewMax

Fuel: Gasoline

Ship Weight: 187 lb.

Dimensions: 77" L × 17 1/4" W × 12 1/2" H

Part Number (Black Powder Coat): 080-01-14225

Part Number (Textured Coat): 080-BL-14225

Notes: ✕ ◆

///I installed the 46 gallon tank on my Toyota Tundra and am very happy with the quality. I have been a master automotive technician for 36 years and have seen my share of poorly made products. This is not one of them.///



by JONATHON LORD

★ Trustpilot

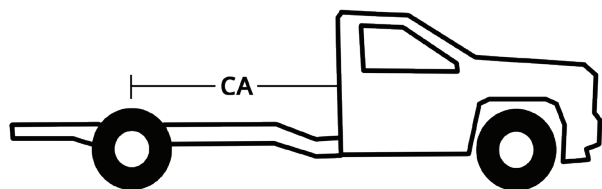


Take your work truck further with a durable replacement fuel tank!

Whether you use your vehicle for towing, hauling, or everyday use, replacing your smaller OEM fuel tank with a high-capacity replacement fuel tank system for more onboard capacity and driving range is a must.

Manufactured from 12-gauge ReliaSteel®, high-yield U.S. aluminized steel, our replacement fuel tanks are fitted with internal baffles to reduce fuel sloshing and come powder coated for a durable satin black finish. New straps and mounting hardware is included.

Larger replacement fuel tanks are available for Ford and Ram cab chassis with 60", 84", 108", and 120" Cab-to-Axle (CA) measurements.



FEATURES & BENEFITS

- Available for 60", 84", 108", and 120" CA measurements
- Fuel tank mounts inside the frame rail
- Tank sits above the differential, no skid plate needed
- Built from 12-gauge ReliaSteel®, high-yield U.S. aluminized steel, for superior durability and strength
- Comes with straps and mounting hardware
- Powder coated for a durable satin black finish
- Baffled to prevent fuel sloshing
- 6-year, unlimited mile warranty



NOTES

- When replacing the aft axle fuel tank with a Transfer Flow midship fuel tank on a Ram cab chassis, an aft axle extension kit is required (part no. 020-01-13920).
- ★ The DEF tank lines will need to be relocated when installing this fuel tank.
- The tank will fit all 60" CA standard cabs with manual shifter and 2x4 with electronic shifter.

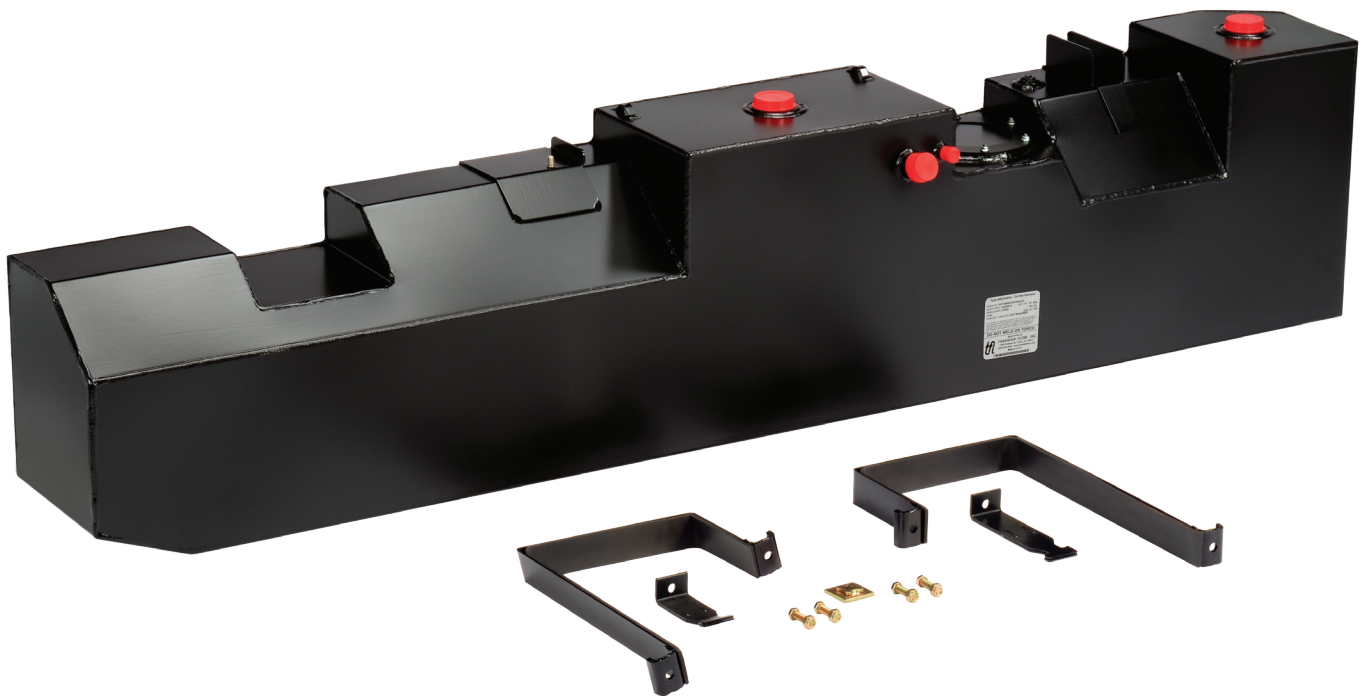
OPTIONAL UPGRADE



Spray-On Coat



Killlem® Biocide
070-CH-33291



FORD CAB CHASSIS REPLACEMENT TANK

34
GALLON

60"/84"/108"/120"
CAB AXLE

Fits: 1999—2010 Ford F-350/F-450/F-550 Cab Chassis

Fuel: Diesel

Ship Weight: 160 lb.

Dimensions: 76 3/4" L × 13" W × 20 3/4" H

Part Number (Black Powder Coat): 080-01-11001

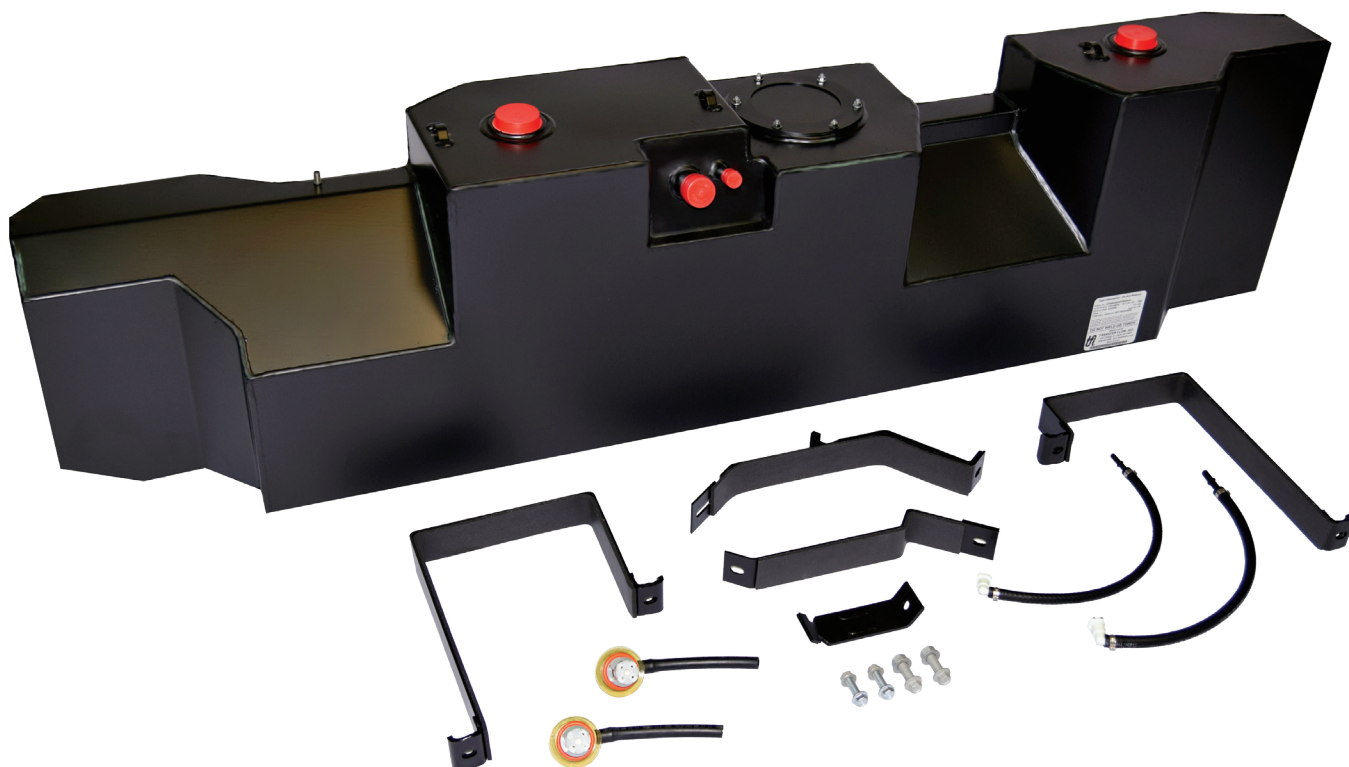
Part Number (Textured Coat): 080-BL-11001

/// We have five of these tanks on the road now (one is nearly twenty years old). It's been moved and is in the third truck. They keep outlasting the pickups! ///



by CLEAR CREEK CAMPING LLC

★ Trustpilot



RAM CAB CHASSIS REPLACEMENT TANKS

**40
GALLON**

60" CAB AXLE

Fits: 2007—20 Ram 4500/5500 Cab Chassis

Fuel: Diesel

Ship Weight: 172 lb.

Dimensions: 74 1/2" L × 11 3/8" W × 17 5/8" H

Part Number (Black Powder Coat): 080-01-15805

Part Number (Textured Coat): 080-BL-15805

Notes: Midship Tank replaces stock midship or aft axle fuel tank ●★●

**50
GALLON**

84" CAB AXLE

Fits: 2007—20 Ram 3500/4500/5500 Cab Chassis

Fuel: Diesel

Ship Weight: 199 lb.

Dimensions: 79" L × 11 3/8" W × 18" H

Part Number (Black Powder Coat): 080-01-15807

Part Number (Textured Coat): 080-BL-15807

Note: Midship Tank replaces stock midship or aft axle fuel tank ●

**50
GALLON**

**108" AND 120"
CAB AXLE**

Fits: 2007—20 Ram 4500/5500 Cab Chassis, 2009—19 Ram 3500 Cab Chassis

Fuel: Diesel

Ship Weight: 203 lb.

Dimensions: 79" L × 11 3/8" W × 18" H

Part Number (Black Powder Coat): 080-01-15809

Part Number (Textured Coat): 080-BL-15809

Note: Midship Tank replaces stock midship or aft axle fuel tank ●

FREIGHT NOT
INCLUDED IN
PRICE OF UNIT.
FREIGHT WILL
BE BILLED UPON
PURCHASE.