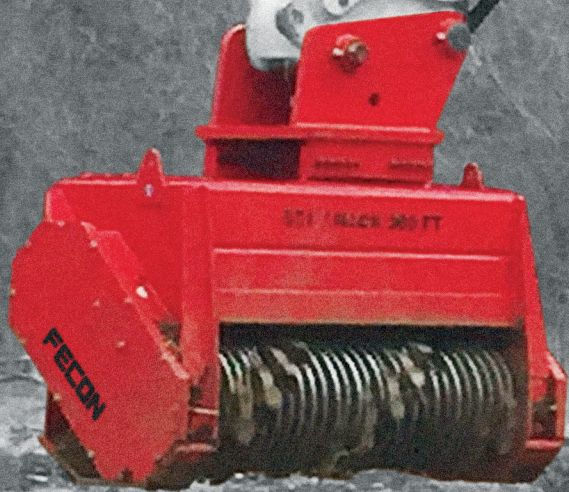


# **FECON<sup>®</sup>**

## **Excavator Attachments**



### **Reach Your Excavator's Potential**

**Bull Hog<sup>®</sup> Mulchers • Stump Grinders**

**Tree Shears • Power Packs**

**fecon.com • 800.528.3113**



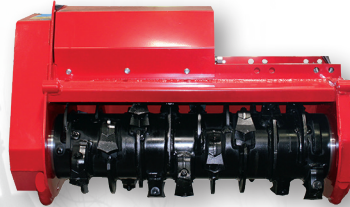
# FECON® Bull Hog Mulchers

TYPE	MODEL	CUTTING WIDTH	OVERALL WIDTH	APPROX WEIGHT*	APPROX FLOW RANGE	EXC SIZE (METRIC TON)	TOOLS
Heavy Duty	FMX36*	36" / 914 mm	44" / 1118 mm	850 lb / 386 kg	12-30 gpm	5 - 10 T	18
Heavy Duty	FMX50*	50" / 1270 mm	58" / 1473 mm	1050 lb / 476 kg	12-30 gpm	5 - 10 T	22
Heavy Duty	CEM36	36" / 914 mm	52" / 1321 mm	1550 lb / 669 kg	17-40 gpm	8 - 15 T	18
Heavy Duty	BH47EXC	37" / 940 mm	50" / 1270 mm	2600 lb / 1293 kg	24-50 gpm	12 - 20 T	18
Heavy Duty	BH62EXC	50" / 1270 mm	63" / 1600 mm	3100 lb / 1470 kg	24-75 gpm	15 - 20 T	24
Severe Duty	BH40EXC	36" / 914 mm	51" / 1295 mm	3500 lb / 1667 kg	24-75 gpm	16 - 45 T	18
Severe Duty	BH80EXC	56" / 1422 mm	72" / 1828 mm	4150 lb / 1939 kg	24-110 gpm	20 - 45 T	30
Severe Duty	BH200EXC	59" / 1499 mm	77" / 1956 mm	5300 lb / 2358 kg	40-150 gpm	25 - 45 T	30

DURABILITY

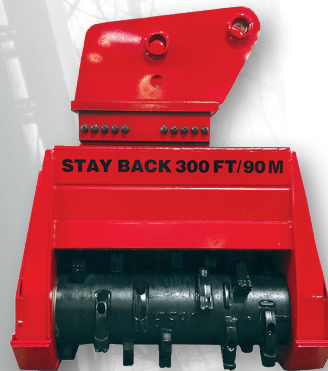
PERFORMANCE

## 5-15 TON EXCAVATOR



- Fully Adjustable Hydraulics to match the flow of your excavator.
- Mount on Excavators, Backhoes & Side Arm Booms
- 36" and 50" Cutting Widths

## 12-25 TON EXCAVATOR



- Variable Displacement Motor
- Fine tune to your excavators flow and pressure
- 3 Rotor Choices, FGT, HDT or DCR
- Several Tool Choices to Match Your Application

## 16-45 TON EXCAVATOR



- 3/4" Steel Body Construction
- Severe-Duty Bearings
- Fine tune to your excavators flow and pressure
- Variable Displacement Motor
- Optional Thumb Receiver



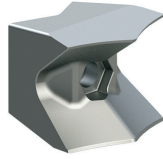
# Rotors

VERSATILITY  
OF TOOL  
USAGE AND  
ROTOR CHOICE

## FMX



FMX Cubit Knife Tool



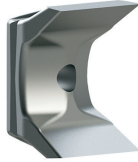
FMX Carbide Tool



## DCR



DCR Viking Axe™



DCR Double Carbide



## FGT



FGT Double Carbide



FGT Severe Duty



FGT Viking Sword™



FGT Stone Tool



## HDT



HDT Double Carbide



HDT Chipper Tool



HDT Stone Tool



HDT Single Carbide



# Power Pack



- Equipped with Fecon Power Management®
- Dramatically Improves Engine Response/Recovery
- Sustained Peak Grinding Power
- Reduced Fuel Consumption
- Optimized Operator Feedback
- Limited Stalling
- Quicker Recovery
- Maximized Productivity
- Modular Design



Bull Hog Excavator Mulchers are most often powered by the excavator's hydraulic system. However, when absolute maximum productivity is required a Bull Hog Power Pack provides the ultimate solution.

COMMON EXC SIZE	MODEL	ENGINE	BULL HOG
20 - 30 Ton	BHP270	270 hp Cummins	BH80EXC/BH200EXC



# Stumpex®



- Low Speed - High Torque
- High Production
- No Carbide Teeth to Replace
- Easy Cleanup
- Safer Work Zone
- The Original Stumpex® designed for Larger Excavators - 2 Models Available.
- Low Maintenance
- Skid steer version adaptable to 8-12 ton excavator

MODEL	WEIGHT	MIN - MAX FLOW	PSI	EXCAVATOR SIZE
SHX33EXC	1368 lb / 621 kg	20 - 42 gpm	2500-4000	8-12 Ton
SHX34EXC	2000 lb / 908 kg*	30 - 55 gpm	3500-5000	20 Ton

\* Weight does not include mount. Excavators must have reverse flow

# Tree Shears



- Single and Dual Knife
- AR400 Shear knives
- Full Rotation Tree Shears
- Cut up to 20" Diameter Trees
- Accumulator Arm Option
- Hardox in My Body

GENERAL	FBS1200EXC	FBS1400EXC	FBS1500EXC	FBS1600EXC
Height	64"	64"	70"	72"
Width	50"	48"	64"	62"
Depth	40"	42"	46"	67"
Weight	1250 lbs.	2000 lbs.	2100 lbs.	3700 lbs.
Cutting Capacity Diameter	12"	14"	15"	16"
Grabber Arm Cylinder	2x10 (2)	3x10	3x10 (2)	3.5x10
Accumulator Arm Cylinder	2x10	2.5x10	2.5x10	3.5x9.5
Knife Cylinder	4x8 (2)	5x14 (1)	5x12 (2)	6x14 (1)
Knife Action	Double	Single	Double	Single
Excavator Size	7-8 Ton	8-12 Ton	8-12 Ton	12-16 Ton
Hydraulic Flow Require.	15-20 gpm	20-25 gpm	20-25 gpm	25-35 gpm
Hydraulic Pressure Require.	3000 psi	3000 psi	3000 psi	2500-3500 psi

# Stump Hogs



- Swing, Reach and Depth for the Hard to Reach Stumps That Cannot be Safely Accessed With a Traditional Stumper
- Just 15 Tools With Single Bolt Fastening
- Guard (removable) for Working in Sensitive Areas.
- Polychain Belt Drive
- Bolt on Mount Custom to Excavator With Pin-On or Quick Attach Options
- Three Tool Choices for Lower Operating Costs

MODEL	WEIGHT	MIN - MAX FLOW	WHEEL DIAMETER	EXCAVATOR SIZE
SH360-45	2500 lb / 1134 kg	40 - 50 gpm	36"	20 - 30 ton
SH360-61	2500 lb / 1134 kg	50 - 64 gpm	36"	33 ton and higher
SH360-100	2600 lb / 1179 kg	95 - 105 gpm	36"	BHP270

# FECON®

fecon.com • sales@fecon.com • 800 528 3113 • +1 513 696 4430

• Operators cab must be protected with both properly maintained 1/2" LEXAN® Glass (or equal) and Falling Object Protection. • Photographs may have been altered for marketing purposes.  
 • Always insure that your carrier manufacturers safety features (including Falling Object Protection, and Roll-Over Protection) meet your job safety requirements.  
 • Certain guarding and features may have been removed for illustrative purposes, always run with proper guarding. • Weights may vary based on options.  
 • Safety Is The Responsibility Of The Operator. • Pictures may contain optional accessories • Specifications subject to change without notice.

