

|| STH1256A

PRODUCT SPECIFICATIONS

SANY



|| STANDARD FEATURES

- Large cab offers improved operator comfort and reduced fatigue
- Axle-mounted stabilizers allow for smoother frame leveling when deployed
- Wide-angle rear camera gives unobstructed view behind the machine
- Simple maintenance with easy fluid level check and convenient access to maintenance items with side-mounted engine

Gross Power

130 hp

Max Lift Height

56' 2"

Max Lift Capacity

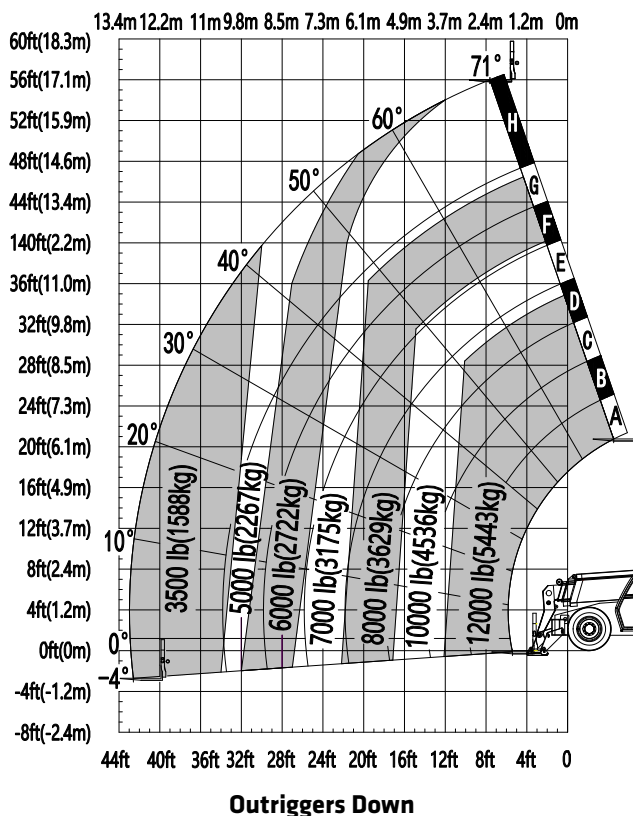
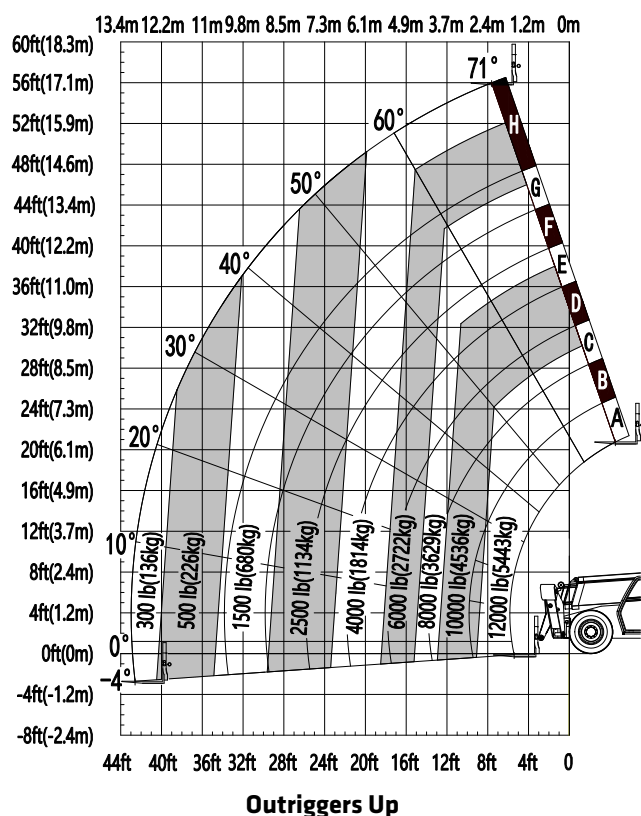
12,000 lb

Operating Weight

35,494 lb

PRODUCT SPECIFICATIONS

SANY STH1256A



Machine Parameters

DIMENSIONS

| | | |
|--------------------------------|-----------|-----------|
| Maximum Lift Height | 17.13 m | 56' 2" |
| Maximum Forward Reach | 13.08 m | 42' 11" |
| Height, Stowed | 2.56 m | 8' 5" |
| Length, Stowed (without Forks) | 6.28 m | 20' 7" |
| Width | 2.59 m | 8' 6" |
| Wheelbase | 3.49 m | 11' 5" |
| Ground Clearance (Center) | 0.46 m | 1' 6" |
| Ground Clearance (Axle) | 0.45 m | 1' 6" |
| Weight | 16,100 kg | 35,494 lb |

CAPACITIES

| | | |
|---------------------------------------|---------|------------|
| Power | 97 kW | 130 hp |
| Torque | 488 Nm | 360 lbf-ft |
| Electrical System | 24 volt | |
| Hydraulic Tank Capacity | 124 L | 33 gal |
| Hydraulic System Capacity (with Tank) | 159 L | 42 gal |
| Fuel Tank Capacity | 135 L | 36 gal |

PERFORMANCE

| | | |
|---------------------------------|----------------|------------|
| Maximum Lift Capacity | 5,443 kg | 12,000 lb |
| Lift Capacity at Maximum Height | 3,175 kg | 7,000 lb |
| Lift Capacity at Maximum Reach | 1,588 kg | 3,500 lb |
| Boom (Raise/Lower) | 15 seconds | 15 seconds |
| Boom (Extend/Retract) | 19 seconds | 19 seconds |
| Frame Leveling | +/- 10 degrees | |
| Maximum Drive Speed | 32 kph | 18 mph |
| Outside Turning Radius (4WS) | 4.30 m | 14' 1" |
| Auxiliary Hydraulic Flow | 63 L/min | 17 gpm |
| Auxiliary Hydraulic Pressure | 17 MPa | 2,466 psi |
| Standard Tire Size | 400/75-28 | |

COMPONENTS

| | | |
|--------------------|---------------------------------|----------|
| Engine | Cummins QSF3.8 | |
| Transmission | Dana VDT12000 | |
| Axles F/R | Dana 223 | Dana 213 |
| Hydraulic Pump | Kawasaki Load Sense Piston Pump | |
| Hydraulic Manifold | Parker | |