

||| **STH1056A**

PRODUCT SPECIFICATIONS

SANY



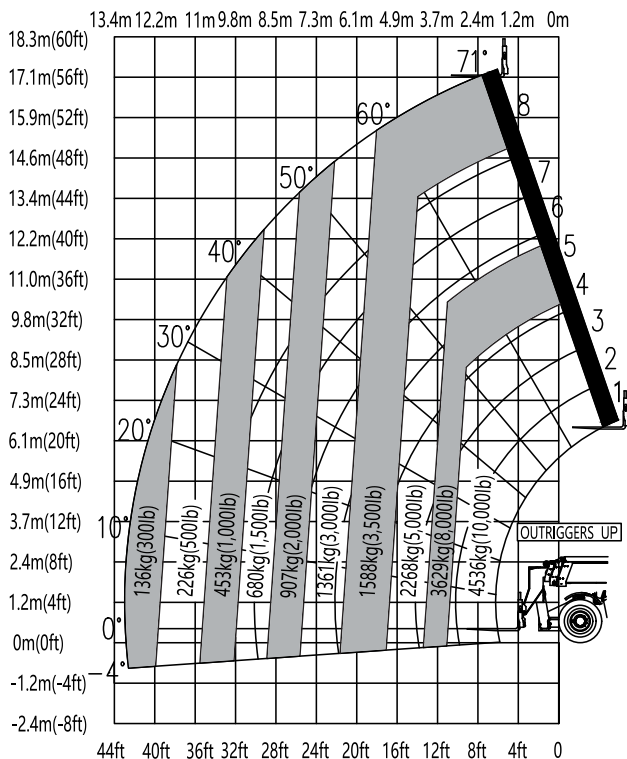
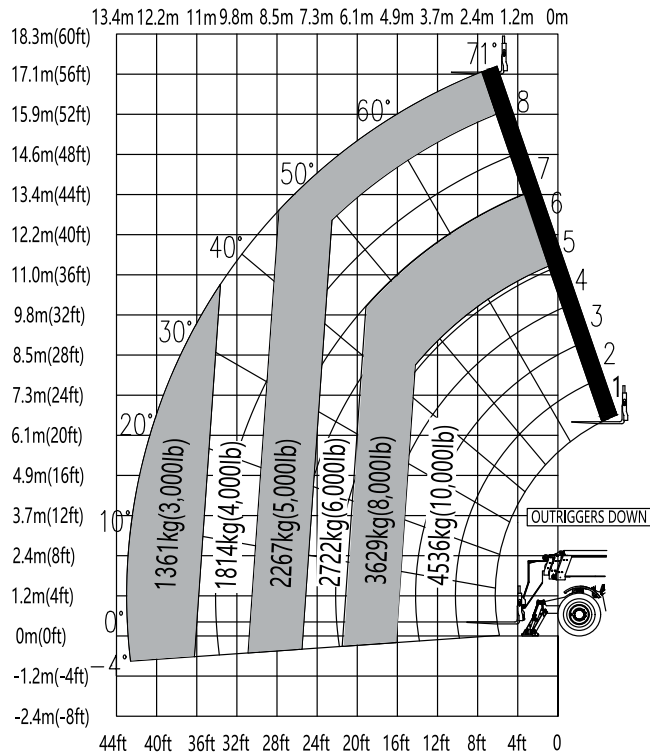
STANDARD FEATURES

- Large cab offers improved operator comfort and reduced fatigue
- Axle-mounted stabilizers allow for smoother frame leveling when deployed
- Wide-angle rear camera gives unobstructed view behind the machine
- Simple maintenance with easy fluid level check and convenient access to maintenance items with side-mounted engine

- ➔ **Gross Power**
97 kW / 130 hp
- ➔ **Max Lift Height**
17.13 m / 56' 2"
- ➔ **Max Lift Capacity**
4 536 kg / 10,000 lb
- ➔ **Operating Weight**
15 100 kg / 33,290 lb

PRODUCT SPECIFICATIONS

MODEL: **STH1056A** Telehandler



Machine Parameters

Dimensions		
Maximum Lift Height	17.13 m	56' 2"
Maximum Forward Reach	13.08 m	42' 11"
Height, Stowed	2.55 m	8' 4"
Length, Stowed (without Forks)	6.28 m	20' 7"
Width	2.56 m	8' 5"
Wheelbase	3.49 m	11' 5"
Ground Clearance (Center)	0.46 m	1' 6"
Ground Clearance (Axle)	0.45 m	1' 6"
Weight	15,100 kg	33,290 lb

Performance		
Maximum Lift Capacity	4 536 kg	10,000 lb
Lift Capacity at Maximum Height	2 267 kg	5,000 lb
Lift Capacity at Maximum Reach	1 361 kg	3,000 lb
Boom (Raise/Lower)	11 sec	14 sec
Boom (Extend/Retract)	15 sec	16 sec
Frame Leveling	+/- 10 degrees	
Maximum Drive Speed	32 kph	20 mph
Outside Turning Radius (4WS)	4.30 m	14' 1"
Auxiliary Hydraulic Flow	63 L/min	17 gpm
Auxiliary Hydraulic Pressure	17 MPa	2,466 psi
Standard Tire Size	400/75-28	

Capacities		
Power	97 kW	130 hp
Torque	488 Nm	360 lbf
Electrical System	24 volt	
Hydraulic Tank Capacity	124 L	33 gal
Hydraulic System Capacity (with Tank)	159 L	42 gal
Fuel Tank Capacity	135 L	36 gal

Components		
Engine	Cummins QSF3.8	
Transmission	Dana VDT12000	
Axles F/R	Dana 212	Dana 223
Hydraulic Pump	Kawasaki Load Sense Piston Pump	
Hydraulic Manifold	Parker	

In the interest of continual equipment development, SANY America, Inc. reserves the right to change these specifications at any time without prior notification.

SANY America, Inc.

318 Cooper Circle • Peachtree City, GA 30269 • T: 470-552-SANY F: 770-632-7820 • sanyamerica.com

SANY

©2021 SANY America, Inc.