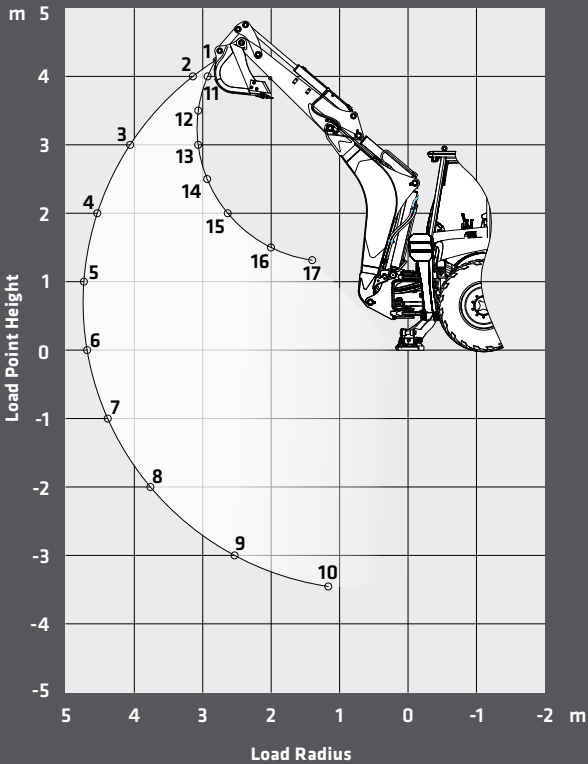


||| SLB95

LIFTING PERFORMANCE

LIFTING FORCE			
	POSITION	IMPERIAL	METRIC
Boom	1	3,005 lbs	1 363 kg
	2	2,619 lbs	1 188 kg
	3	2,778 lbs	1 260 kg
	4	2,696 lbs	1 223 kg
	5	2,571 lbs	1 166 kg
	6	2,414 lbs	1 095 kg
	7	2,344 lbs	1 063 kg
	8	2,286 lbs	1 037 kg
	9	2,423 lbs	1 099 kg
	10	3,845 lbs	1 744 kg
Arm	11	2,844 lbs	1 290 kg
	12	3,735 lbs	1 694 kg
	13	5,941 lbs	2 695 kg
	14	5,816 lbs	2 638 kg
	15	6,579 lbs	2 984 kg
	16	7,683 lbs	3 485 kg
	17	9,504 lbs	4 311 kg



In the interest of continual equipment development, SANY America Inc. reserves the right to change these specifications at any time without prior notification.

||| SLB95

PRODUCT SPECIFICATIONS

SANY



||| STANDARD FEATURES

- 4WD Powershift Transmission with Limited Slip Differential and Drive Shaft Guard
- Load Sensing Hydraulic with Pilot Controls and ISO/SAE Pattern Change
- Boom Float, Return to Dig, and Breaker Line
- Bluetooth (in Cab Model Only)
- Flip-Over Pads, Outrigger Cylinder Guards and Front Bumpers
- Eight LED Working Lights, Rotating Beacon, Traffic Lights, Air Suspension Seats, and 3" Retractable Seatbelt

Net Power  
**95 hp**

Excavator Dig Depth  
**14' 3"**

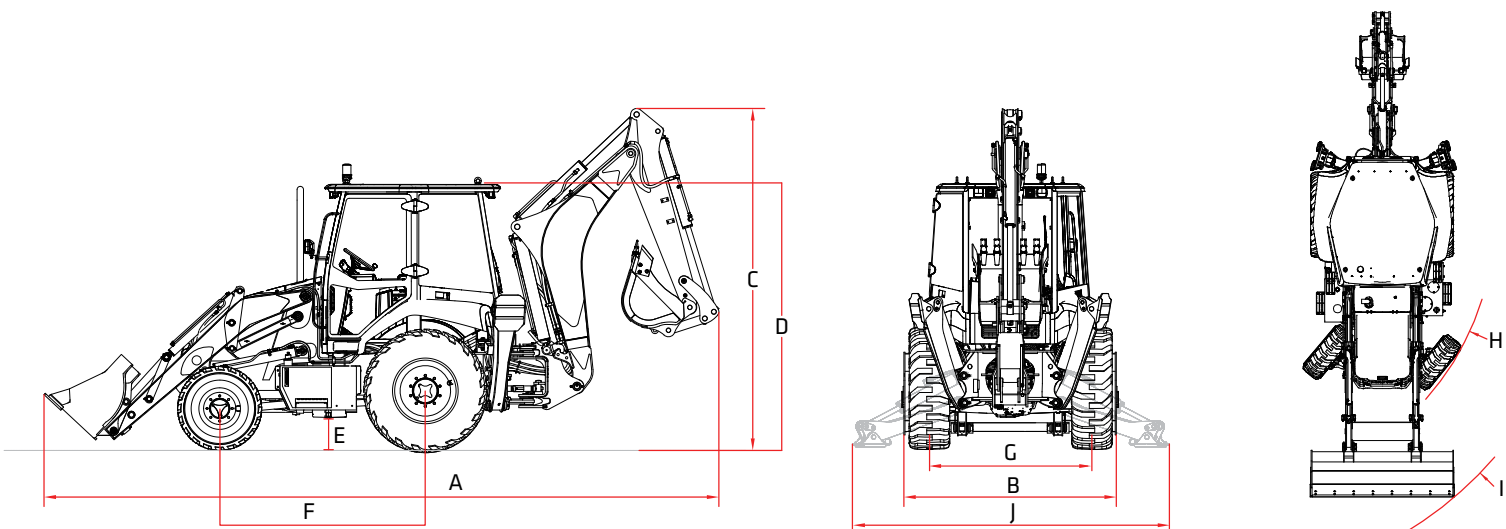
Operating Weight  
**17,637 lbs**

Excavator Bucket Capacity  
**1.3 yd³**

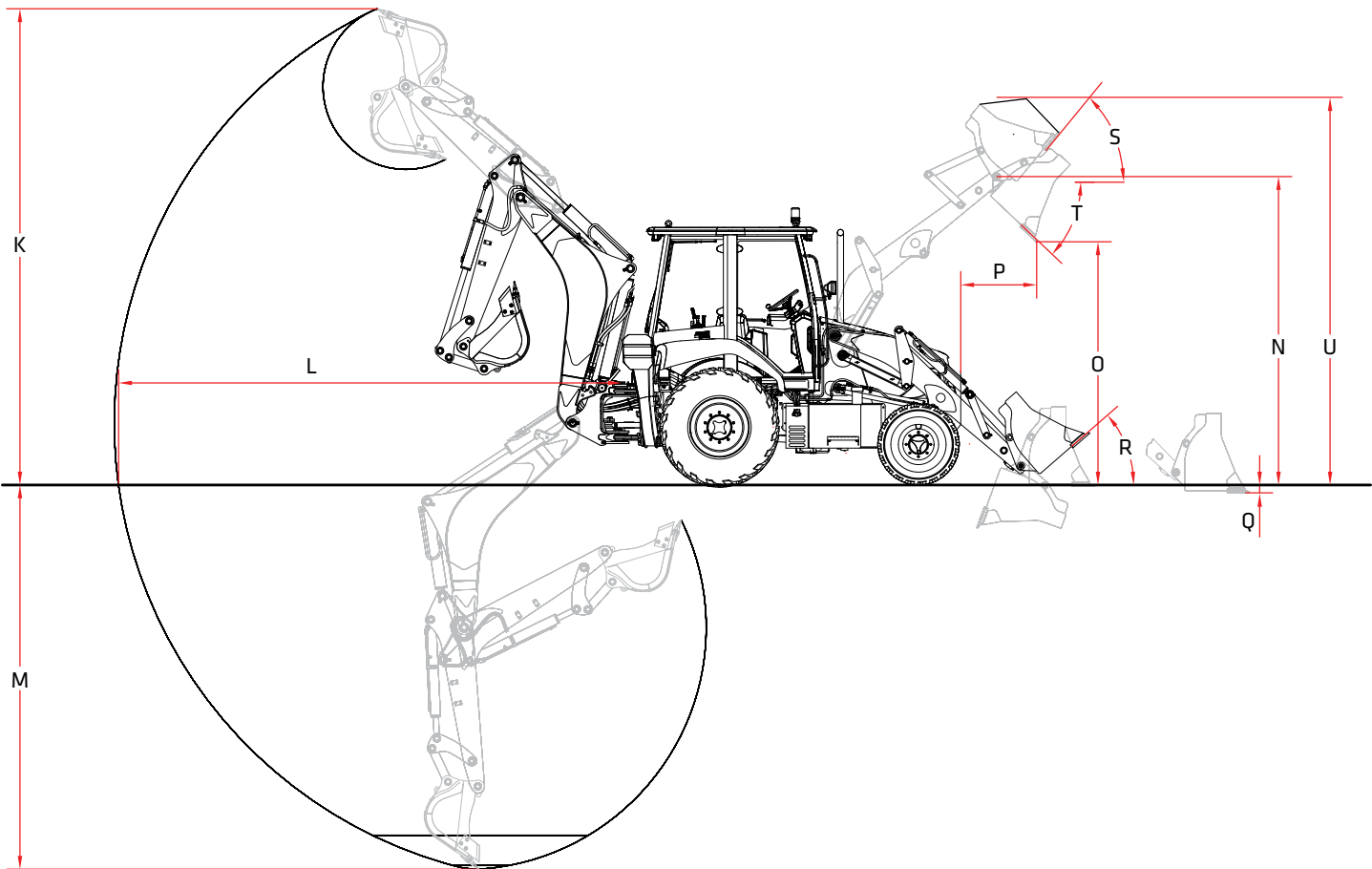
Loader Bucket Capacity  
**0.34 yd³**



DIMENSIONS



WORKING RANGE



All-Around **Reliable** Workhorse

TECHNICAL SPECIFICATIONS

Operating Weight	17,637 lbs	8 000 kg
Engine	Deutz TCD3.6-L4 - Low Maintenance T4F	
Displacement	220 in <sup>3</sup>	3.6 L
Gross Power	99 hp @ 2200 rpm	73.8 kW @ 2200 rpm
Net Power	95 hp @ 2200 rpm	70.8 kW @ 2200 rpm
Maximum Torque	302.4 lbs-ft @1600 rpm	410 Nm @ 1600 rpm
Transmission	ZF 4WD – 4 Speed Forward/Reverse	
Speed Gear 1	3 mph	4.8 km/hr
Speed Gear 2	6 mph	9.6 km/hr
Speed Gear 3	12 mph	19.3 km/hr
Speed Gear 4	22 mph	35.4 km/hr
Hydraulics	Load Sensing with Pilot Controls	
Main Hydraulic Pump	Kawasaki Variable Displacement–Axial Piston	
Hydraulic Power	52.3 hp @ 2200 rpm	39 kW @ 2,200 rpm
System Flow	41.2 gal/min	156 l/min
Operating Pressure	3,625 psi	24.9 MPa
One-way Aux Line Max Flow	21 gal/min	79.4 l/min
One-way Aux Line Max Pressure	2,103 psi	14.5 MPa

DIMENSIONS

A Overall Length, Transport	24' 3"	7 381 mm
B Overall Width, Transport	7' 6"	2 280 mm
C Transport Height	12' 3"	3 732 mm
D Cab Roof Height	10' 3"	3 129 mm
E Ground Clearance	1' 1"	320 mm
F Length from Axle to Axle	7' 4"	2 245 mm
G Wheel Base, Rear	5' 10"	1 780 mm
H Turning Radius, Front Tires	13' 11"	4 240 mm
I Turning Radius, Front Bucket	15' 9"	4 800 mm
J Stabilizer Overall Width	11' 5"	3 491 mm

SERVICE REFILL CAPACITIES

Fuel Tank Capacity	37.0 gal	140.0 L
DEF Tank Capacity	2.6 gal	10.0 L
Hydraulic Oil Capacity	31.7 gal	120.0 L
Engine Oil Capacity	2.2 gal	8.5 L
Cooling System Capacity	5.3 gal	20.0 L
Gear Box Oil Capacity	4.8 gal	18.0 L

WORKING RANGE

K Maximum Digging Height	17' 7"	5 370 mm
L Maximum Reach from Center of Swing Pivot	18' 7"	5 671 mm
M Maximum Digging Depth	14' 3"	4 332 mm
N Maximum Height to Bucket Hinge Pin	11' 5"	3 478 mm
O Dump Clearance	8' 10"	2 700 mm
P Reach at Dump Position	2' 5"	730 mm
Q Maximum Digging Depth with Bucket Leveled	3"	88 mm
R Bucket Rollback Angle @ Ground Level	40°	
S Bucket Rollback Angle @ Full Height	51°	
T Loader Dump Angle @ Full Height	44°	
U Maximum Operating Height	14' 1"	4 293 mm

DIGGING PERFORMANCE

Bucket Breakout Force–Excavator	12,354 lbf	55 kN
Bucket Breakout Force–Loader	11,240 lbf	50 kN