

4GSTAPIKT4T1OP
4" STANDARD TRASH PUMP, AUTOPRIME, OPEN, TRAILER UNIT



4GST GLOBAL STANDARD TRASH

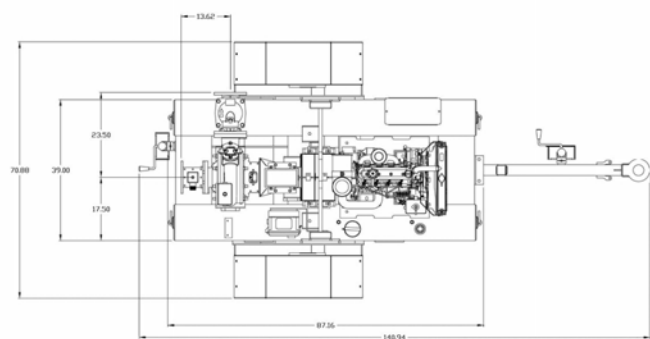
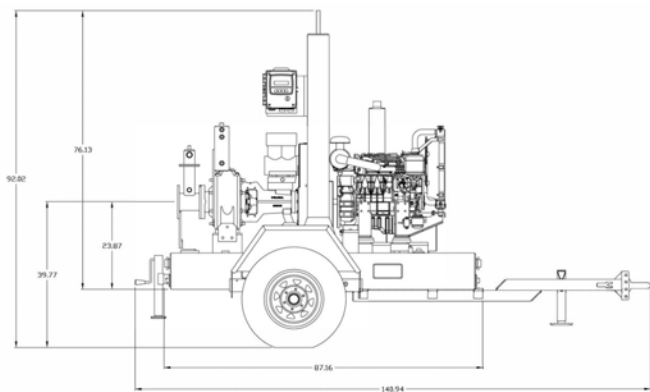


Global Pump® Standard Trash pumps are specifically designed to effectively handle a wide range of liquids from water to sewage and sludge that can contain solids and other material.

Global Pump Standard Trash pumps provide a dependable, highly efficient solution. The model 4GST is capable of achieving maximum flows of 1,250 gpm (284 m³/h) and maximum total head of 116' (35.4 m) while handling solids up to 3" (76.2 mm) in diameter.

The standard 4GST is powered by a water-cooled, 4-cylinder diesel engine. Alternative drives are available, including other diesel engines or electric motor options.

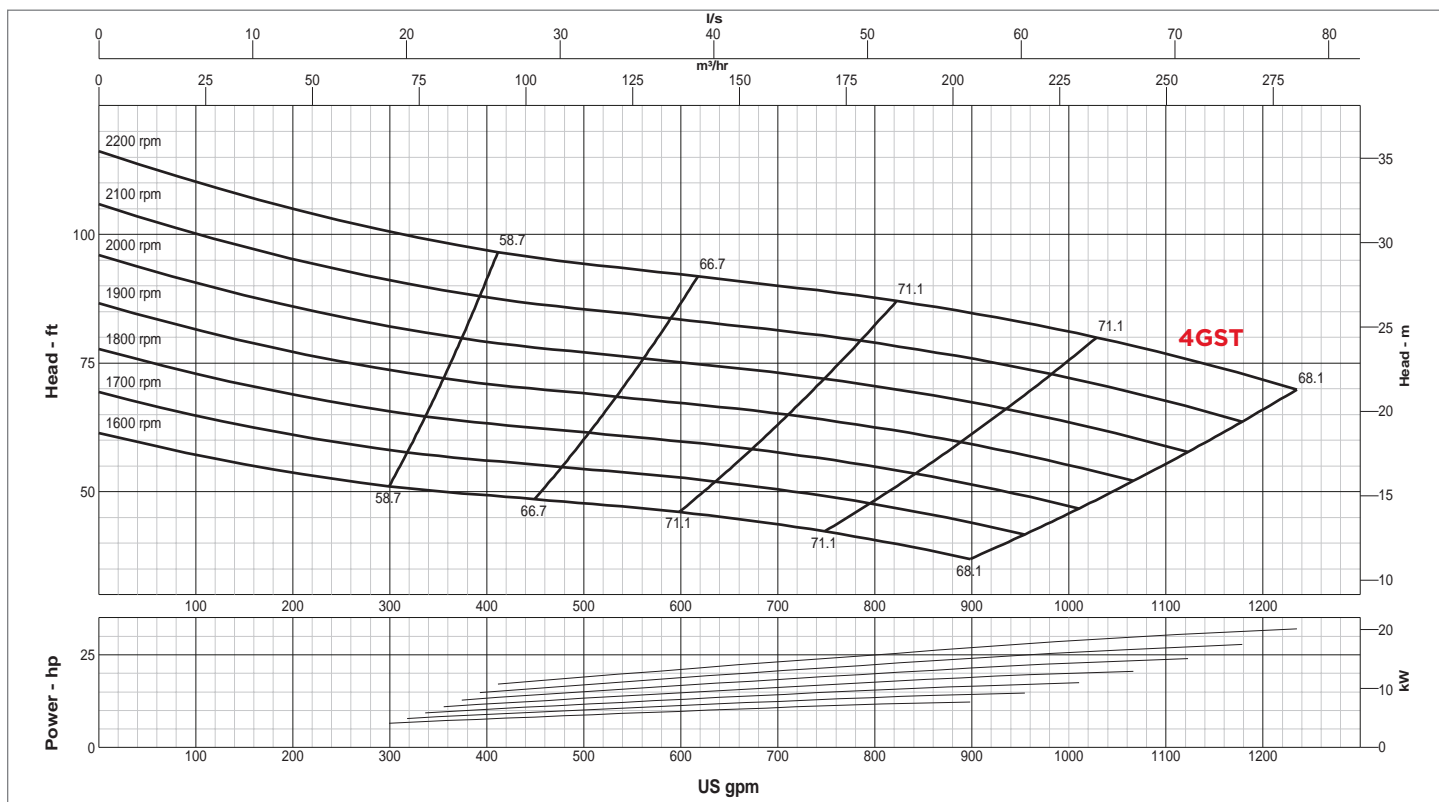
FEATURES	OPTIONS
Global Pump's rugged, heavy duty pumps are engineered specifically for portable application	Available with a variety of priming systems, including Global's Auto Prime® automatic priming system (compressor-fed venturi priming) or a diaphragm priming system
Non-return valve uses only a single moving part to allow full flow with minimal restriction	Mechanical seal with glycol (biodegradable optional) quench allows the pump to start and run dry
Standard engine control panel provides preset emergency shutdown protection and allows the addition of automatic level control	Global Pump's environmental box separates and silences air exhaust and returns liquid to the pump suction.
Fully guarded coupling	Fuel cubes for extended run times and/or remote location as required
Pump casings are hydrostatically tested to 50 psig (345 kPa) above the peak casing design pressure	Sound attenuated enclosure options
Highway trailer with integral fuel cell/chassis, lights, fenders, tie downs, lifting bail, front and rear jacks. Trailer brakes can be offered as required	Skid-mounted formats with tie downs, lifting bail, and fork pockets
	Hose racks, accessory containers and other custom features available as required
	Wide range of suction and discharge fittings including Global Pump's own "QD" Quick Disconnect fittings and accessories

**SPECIFICATIONS**

Connections	4" (100 mm) ANSI Flanges
Max Pump Speed	2,200 rpm
Max Flow	1,250 gpm (284 m ³ /h)
Max Head	116' (35.4 m)
Max Static Priming Lift	28' (8.5 m)
Temperature Limit	160° F (70° C)
Solids Handling Capability	3" (76.2 mm)
Max Casing Pressure	125 psig (862 kPa)
Fuel Cell	83 gallons (314 liters)
Dry Weight	3,100 lbs

PUMP MATERIAL

Casing	Cast Iron (CD4MCu is an option)
Impeller	Cast Iron (CD4MCu is an option)
Bearing Housing	Cast Iron
Bearing Lubrication	Grease
Shaft	Stainless Steel
Seal	Silicon Carbide on Silicon Carbide
Chassis/Fuel Cell	Steel
Non-Return Valve	Nitrile Fitted Cast Iron

**GLOBAL PUMP**

10162 East Coldwater Road, Davison, MI 48423

Tel: 810.653.4828 Fax: 810.658.0632

1.866.360.PUMPwww.globalpump.com

GLOBAL CONTROL BOX



ADVANCED PUMP CONTROL

A wide range of operating modes for both manual and auto operation to match the pumping requirements of the application.

DESCRIPTION
GENERAL <ul style="list-style-type: none"> • Full Display • Fault Code Reader and Alarm Log • Service Alerts • Fuel Level Available • Alarm Horn • Monitor Suction & Discharge Pressure
AUTO START OPERATION MODES <ul style="list-style-type: none"> • FLOATS (Single and Dual Float) • PRESSURE (Start, Stop and Maintain Pressure) • LEVEL (Start, Stop and Maintain Level) • INTEGRATED SCHEDULER (Run Days/Times)
AUTO THROTTLE OPERATION <ul style="list-style-type: none"> • Warm Up Speed & Period • Prime Speed & Period • Operating Speed • Cool Down Speed & Period • Pressure and Level Maintain
FAILSAFE FLOAT BACKUP <ul style="list-style-type: none"> • Float backup available in case of pressure or level transducer failure

PUMP CONTROL TECHNOLOGY

Controls, Incorporated brings its advanced engine control technology and reputation for durability to provide advanced pump control with simple and intuitive operation for Global Pump.

DURABILITY

The water tight IP67 rated display and control module is mounted in a NEMA 4X rated panel providing a two layer construction for maximum protection.

EASY-TO-READ DISPLAY

An advanced OLED display provides superior visibility in all lighting conditions while providing an extended temperature down to -40°C/-40°F.



Suction and discharge pressure monitoring is also available.

AUTO START OPERATION

A variety of auto start and auto throttle modes are available, providing a wide range of pump control options.

Auto Start/Stop

- Floats, Level, Pressure, Real-Time Clock Scheduler

Auto Throttle

- Warm Up, Prime, Operating and Cool Down Speeds
- Auto Throttle to Maintain Level or Pressure

Failsafe Float Backup

- Float backup for pressure and level applications

THROTTLE CONTROL

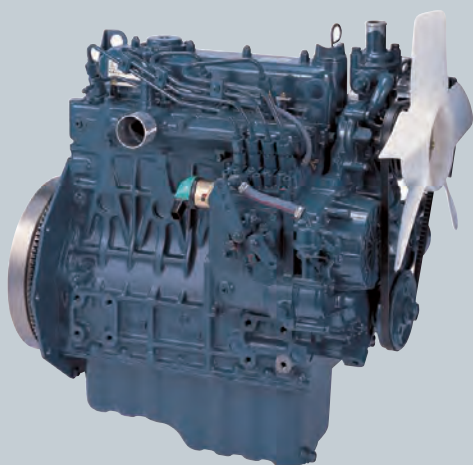
Minimum speed, maximum speed and rate of acceleration are selectable to assure the pump always operates in the correct speed range.

FAULT CODES

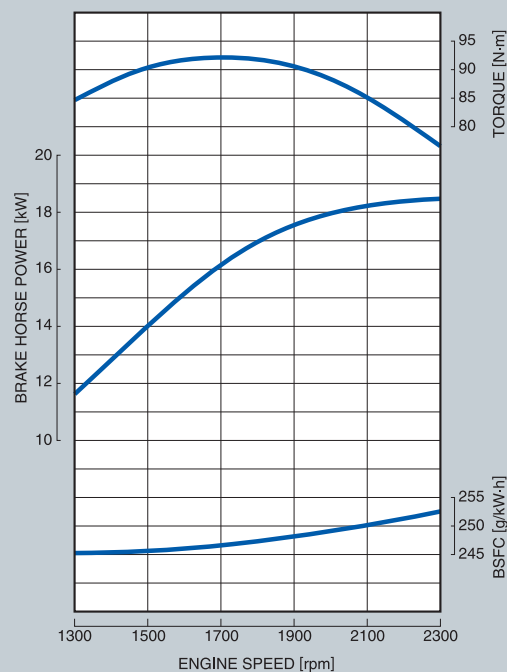
Engine alarm codes are displayed along with easy-to-read messages and corresponding yellow or red lamp illumination.

COMMUNICATIONS

Panel communications for simple integration with external devices, SCADA, remote monitoring and telemetry systems.

**EPA TIER****4****INDUSTRIAL DIESEL ENGINE****KUBOTA 05 SERIES (4-cylinder)****V1505-E4B****RATED POWER****18.5kW@2300rpm**

Photograph may show non-standard equipment.

PERFORMANCE CURVE**FEATURES and BENEFITS****Emissions**

Kubota 05 Series, the compact multi-cylinder liquid cooled industrial diesel engines, complies with EPA Tier 4 emissions regulations. These are most stringent emissions regulations in the world in this class.

Kubota engine less than 19kW meets emission standards over the NRTC and also meets the NTE requirements.

Durable Power

The Kubota 05 Series is an established leader in its horsepower range and has been the preferred power source of various industrial equipment manufactures.

Clean and Quiet Power

Kubota's original E-TVCS(Three Vortex Combustion System) has been further improved for better emissions.

Option

A variety of engine accessory options is also available.

KUBOTA 05 SERIES V1505-E4B

GENERAL SPECIFICATION

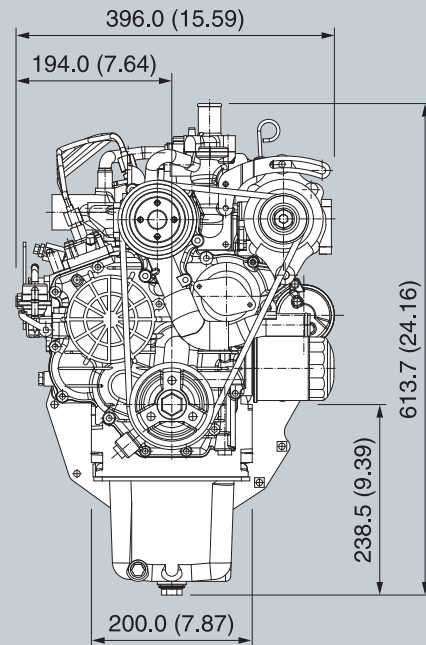
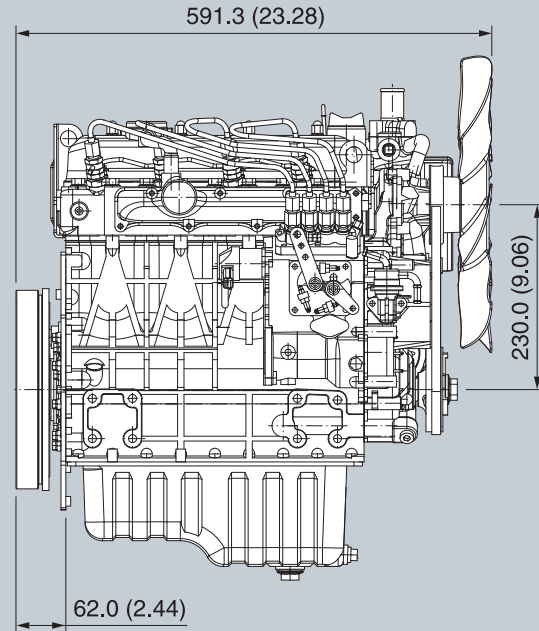
Model		V1505-E4B
Emission Regulation		Tier 4
Type		Vertical 4-cycle Liquid Cooled Diesel
Number of Cylinders		4
Bore	mm (in)	78.0 (3.07)
Stroke	mm (in)	78.4 (3.09)
Displacement	L (cu.in)	1.498 (91.41)
Combustion System		IDI
Intake System		Naturally Aspirated
Maximum Speed	rpm	2300
Output: Gross Intermittent	kW	18.5
	hp	24.8
Direction of Rotation		Counterclockwise Viewed on Flywheel
Oil Pan Capacity	L (gal)	6.0 (1.59)
Starter Capacity	V-kW	12-1.2
Alternator Capacity	V-A	12-40
Length	mm (in)	591.3 (23.28)
Width	mm (in)	396.0 (15.59)
Height (1)	mm (in)	613.7 (24.16)
Height (2)	mm (in)	238.5 (9.39)
Dry Weight	kg (lb)	110.0 (242.5)

*Specification is subject to change without notice.

*Output: Gross Intermittent SAE J1995

*Dry weight is according to Kubota's standard specification.
When specification varies, the weight will vary accordingly.

DIMENSIONS



For Earth, For Life



KUBOTA ENGINE AMERICA
505 Schelter Road Lincolnshire, IL 60069
Phone: 847-955-2500 Fax: 847-955-2501
www.kubotaengine.com

KUBOTA CANADA, LTD
5900 14th Avenue, Markham, Ontario L3S 4K4
Phone: 905-294-7477 Fax: 905-294-1554

4/14/2014 - KEA2287