

BRUSH HAWG MODEL G-2224C & PETERBILT 537

30" DIAMETER SLEWING RING BEARING
PLANETARY GEAR BOX WITH DISC DRIVE MOTOR
DUAL STAND-UP MULTI-LEVER CONTROLS
CENTERED STABILIZER & DUMP BODY LEVER CONTROLS
DUAL OPERATOR STATIONS
24" WALK-THROUGH
18' TAPERED DUMP BODY (42"-74")
4" X-MEMBERS ON 12" CENTERS, DOUBLED AT FLOOR SEAMS
7 GA 3-PIECE FLOOR GRADE 50
10 GA SIDES, FRONT SHEET, & TAILGATE SHEET GRADE 80
10 GA 4-WAY BEND SIDE POSTS ON 24" CENTERS
11 GA TUBING TOP RAIL
SINGLE SIDE-HINGED TAILGATE WITH (3) HINGE ASSEMBLIES
15 TON SCISSOR HOIST
4-WAY ADJUSTABLE STABILIZERS
MAIN BOOM, TIP BOOM, & TIP BOOM EXTENSION
HEAVY DUTY BUCKET WITH 360 DEGREE ROTATOR (NO STOPS)
HOT SHIFT PTO, SINGLE STAGE DM PUMP, & EOS
COLOR LCD REAR VISION CAMERA SYSTEM
ALL LED BODY LIGHTS
DUAL UPPER TAILGATE BRAKE LIGHTS
DUAL UPPER TAILGATE AMBER STROBING LIGHTS
MOUNTED ON SUITABLE CUSTOMER FURNISHED CHASSIS
PAINTED ANY TWO COLORS (LOADER & DUMP BODY)
DUMP BODY UNDERCOATING
OWNER/OPERATOR TRAINING
STANDARD WARRANTY
DELIVERED ANYWHERE IN NC

\$272,926.00

BRUSH HAWG®

C-MODEL (MULTI-LEVER)



***Shown with optional equipment**

STANDARD FEATURES

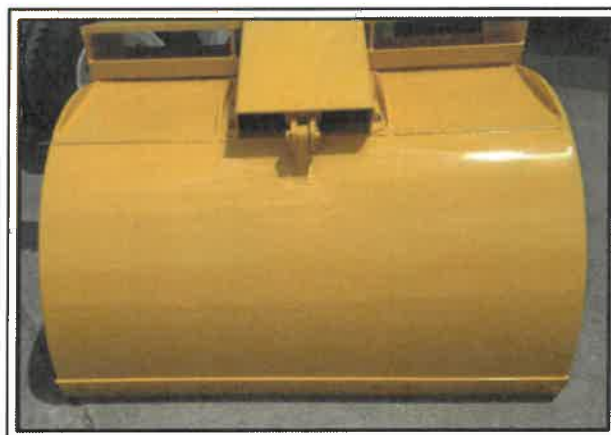
- 30" Diameter Slewing Ring Bearing
- 2-Stage Planetary Gear Box
- Disc-Valve Motor
- 20'-8" Overall Reach
- Excellent Below Grade Reach
- Dual Stand-Up Operator Stations w/ 24" Walk-Through
- 4-Way Adjustable Stabilizers
- 48" x 60" Bucket
- 15 Ton Scissor Hoist
- 18' Dump Body



Multi-Lever
Controls



Bolt-On Bucket Cylinder
Covers & Reversible
Bolt-On Bucket Edges



Tip Boom
Hose Retract Box



CURBTENDER
SWEEPERS, LLC

701 Performance Drive ♦ Cedar Falls, IA 50613
319.266.1721 ♦ www.brushhawg.com

All designs and specifications are subject to change at the manufacturer's sole discretion at any time without notice. The data published herein is informational in nature and should not be misconstrued to warrant suitability of the unit for any purpose as performance may vary with the conditions encountered. Products must be installed and operated with all applicable standards, codes, regulations, and recommended safety procedures.



The Pblt Store-Grnville (P150)
199 Freeman Farm Road
Duncan, South Carolina 29334

Nu Life Environmenta
Po Box 1527
Easley, South Carolina 29640
United States of America

Barry Walker
Cell Phone: 864-313-7679
Office Phone: 864-269-7202
Email: bwalker@thepetstore.com

Stuart Simmons

Vehicle Summary

Unit		Chassis	
Model:	Model 537	Fr Axle Load (lbs):	12000
Type:	Full Truck	Rr Axle Load (lbs):	21000
Description 1:	NLMTC 537 YM 24	G.C.W. (lbs):	33000
Description 2:			
Application		Road Conditions: -	
Intended Serv.:	Refuse/On-Highway	Class A (Highway)	100
Commodity:	Refuse, Scrap, Recycling	Class B (Hwy/Mtn)	0
		Class C (Off-Hwy)	0
		Class D (Off-Road)	0
Body			
Type:	Curbside Recycler	Maximum Grade:	6
Length (ft):	24	Wheelbase (in):	254
Height (ft):	13.5	Overhang (in):	100
Max Laden Weight (lbs):	1000	Fr Axle to BOC (in):	67.5
		Cab to Axle (in):	186.5
		Cab to EOF (in):	286.5
Trailer			
No. of Trailer Axles:	0	Overall Comb. Length (in):	394
Type:			
Length (ft):	0	Special Req.	
Height (ft):	0		
Kingpin Inset (in):	0		
Corner Radius (in):	0		
Restrictions			
Length (ft):	40		
Width (in):	102		
Height (ft):	13.5		

Approved by: _____

Date: _____

Note: All sales are F.O.B. designated plant of manufacture.



Std/ Opt	Description	\$ List	Weight
Base Model			
S	Model 537 The Peterbilt Model 537 is highly versatile to take on the big jobs. It is available as a Class 7 truck or tractor with a GVW up to 33,000 lbs. With a full range of suspensions and an available all-wheel-drive configuration, the 537 is the perfect match for applications such as wrecker, tanker, beverage delivery, and municipal utilities – just about any job you can throw at it.	98,059	9,870
O	Refuse, Scrap, Recycling	0	0
O	Refuse/On-Highway Truck or tractor which hauls refuse, recycled material, etc. Includes roll-on/roll-off container movement, as well as hauling refuse from transfer stations to, but not into, landfills.	0	0
O	Curbside Recycler A lift-equipped truck used to load residential recycling bins into the truck body. Recycling material is removed by the body by hydraulic tilt.	0	0
S	United States Registry Canadian Registry Package Requires Air Conditioning Excise Tax Canada, Speedometer to be KPH ipo MPH, Daytime Running Lights and Rubber Battery Pad in Bottom of Battery Box.	0	0
Configuration			
S	Not Applicable Secondary Manufacturer	0	0
Frame & Equipment			
O	10-3/4" Steel Rails 355-384" 10.75x3.5x.375 Dimension, 2,136,000 RBM; Yield Strength: 120,000 psi. Section Modulus: 17.8 cubic inches. Weight: 1.74 lbs/inch pair	851	645
O	Heavy Duty 5-Piece Crossmember BOC IPO Standard Class 5, 6, 7	17	20
O	Zinc Coated Anti Corrosion Treated Frame Rails Requires Frame Rail Code. Zinc Phosphate coating will replace the standard frame rail primer and provide added corrosion prevention for your customer's operating in severe conditions or in climates where vehicle rust is common.	362	2
S	1-Piece Steel Frame Rail Xmbr Excludes Suspension	0	0
O	Custom Wheelbase or Overhang Engineering approval may be required.	350	0
O	3-Piece Suspension Crossmembers	113	0
S	EOF Square without Crossmember End-of-frame square without crossmember. For use with body builder installed crossmember.	0	0
S	Omit Rear Mudflaps and Hangers	0	0

Price Level: January 1, 2022
Deal: NLMTC 537 YM 24
Printed On: 4/14/2022 7:09:28 AM

Date: April 14, 2022
Quote Number: QUO-938666-Z6V6H5



Std/ Opt	Description	\$ List	Weight
Front Axle & Equipment			
S	Hendrickson SteerTek NXT 12,500 Lb. 3.32" Drop	0	0
S	Mono-Leaf Springs, Shocks, 12,000 LBS.	0	0
S	Power Steering Sheppard HD94 Sheppard HD94 power steering gear is a light weight version of heavy duty line-haul power steering gear. For use with 10,000 to 13,200 lb. axle ratings.	0	0
O	Power Steering Reservoir Frame Mounted The power steering reservoir is a steering system that eases drivability by applying hydraulic pressure to the steering gear.	0	0
S	PHP10 Iron PreSet PLUS Hubs PHP10 iron PreSet PLUS hubs have a fully integrated spindle nut design, an optimized wheel spacer, magnetic fill plug on drive and trailer hubs for inspection of metal particles in lubricant, with a long life oil seal and bearings are pre-adjusted. Use with Front Axle.	0	0
S	Bendix Air Cam Front Drum Brakes 16.5x5 For use with 10,000 lbs to 14,600 lbs steer axles. Includes automatic slack adjusters & outboard mounted brake drums.	0	0
O	Hendrickson Wide Track IPO Standard Hendrickson Wide Track in place of standard front axle 71" KPI IPO 69" front axle for improved turning radius.	0	15
S	Gusseted Cam Brackets, Steer Axle	0	0
Rear Axle & Equipment			
S	Meritor MS21-14X 21,000 LB MS-14X single rear drive axles have hypoid-generoid gearing options that offer long life and increased durability. Rigid differential cases offer precise gear alignment and durability. Optional driver-controlled differential lock (DCDL) maximizes traction and spinout protections in slippery conditions.	0	0
S	PHP10 Iron PreSet PLUS Hubs	0	0
O	Refuse Service Brakes, Steer And Drive Axles Designed for heavy-duty applications for refuse industry, providing long brake life, safety and performance.	95	4
O	Gusseted Cam Brackets, Drive Axle(s)	26	2
S	SBM Valve Full trucks require a spring brake modulation (SBM) system for emergency braking application. This system requires an SBM valve and a relay valve with spring brakes on the rear axles. The SBM valve allows the foot valve to operate the rear axle spring brakes if a failure exists in the rear air system.	0	0
S	Stability System Not Selected Or Not Available	0	0
S	Anti-Lock Braking System (ABS) 4S4M	0	0

Price Level: January 1, 2022
Deal: NLMTC 537 YM 24
Printed On: 4/14/2022 7:09:28 AM

Date: April 14, 2022
Quote Number: QUO-938666-Z6V6H5



Std/ Opt	Description	\$ List	Weight
	ABS-6. Includes air braking system.		
S	Synthetic Axle Lubricant All Axles Peterbilt heavy duty models include Fuel Efficient Cognis EMGARD FE75W-90 which provides customers performance advantages over current synthetic lubricants with reduced gear wear and extended maintenance intervals, resulting in increased uptime. In addition, the lubricant provides improved fluid flow to protect gears in extreme cold conditions and withstand the stress from high temperatures, extending component life.	0	0
S	Bendix Air Cam Rear Drum Brakes 16.5x7 Bendix Air Cam Rear Drum Brakes to fit all heavy haul, construction, refuse and highway truck and tractor applications. Includes Automatic Slack Adjusters & Outboard Mounted Brake Drums.	0	0
O	Ratio 5.57 Rear Axle	0	0
S	Reyco 79KB Taper Leaf 21,000 lb	0	0
O	Reyco Helper Springs 3,000 lb For use with Reyco 79KB suspension	350	60

Engine & Equipment

O	PACCAR PX-9 270@2000 GOV@2200 860@1200 Productivity (2021 EMISSIONS)	8,989	475
	N21350 C121 72....Maximum Accelerator Pedal Ve		
	N21370 C128 72....Maximum Cruise Speed (P059)		
	N21460 C132 1400..Max PTO Speed (P046)		
	N21520 C133 5.....Timer Setting (P030)		
	N21610 C188 39....Low Ambient Temperature Thre		
	N21620 C189 60....Intermediate Ambient Tempera		
	N21630 C190 80....High Ambient Temperature Thr		
	N21550 C206 35....Engine Load Threshold (P516)		
	N21340 C209 120...Hard Maximum Speed Limit (P1		
	N21510 C225 NO....Enable Idle Shutdown Park Br		
	N21450 C231 NO....Gear Down Protection (P026)		
	N21570 C233 NO....Idle Shutdown Manual Overrul		
	N21440 C234 YES...Engine Protection Shutdown (
	N21480 C238 NO....Auto Engine Brake in Cruise		
	N21470 C239 NO....Cruise Control Auto Resume (
	N21430 C333 0.....Reserve Speed Limit Offset (
	N21410 C334 0.....Maximum Cycle Distance (N202		
	N21590 C382 YES...Enable Hot Ambient Automatic		
	N21500 C395 0.....Expiration Distance (N209)		
	N21530 C396 YES...Enable Impending Shutdown Wa		
	N21540 C397 60....Timer For Impending Shutdown		
	N21320 C399 120...Standard Maximum Speed Limit		
	N21400 C400 252...Reserve Speed Function Reset		
	N21420 C401 10....Maximum Active Distance (N20		
	N21330 C402 0.....Expiration Distance (N207)		



Std/ Opt	Description	\$ List	Weight
S	VMUX Electronics Architecture	0	0
O	Engine Idle Shutdown Timer Disabled	0	0
O	Enable EIST Ambient Temp Overrule	0	0
	Eff EIST NA Expiration Miles	0	0
	Effective VSL Setting NA	0	0
O	Typical Operating Speed 62 MPH	0	0
O	Powertrain Optimized for Balance Best analysis for vehicles where service includes frequent start and stop cycles.	0	0
O	Remote PTO and Throttle Provision 12-pin connector on engine harness.	16	0
O	CARB Engine Idling Compliance DECLINED By Dealer/Customer	0	0
S	14-Pin Body Lighting Connector	0	0
O	EPA Emission Warranty	0	0
S	PACCAR 160 Amp Alternator, Brushed PACCAR 160 AMP alternator, brushed producing 160 Amps at road speed and 100 Amps at idle.	0	0
O	Immersion Type Block Heater 110-120V Standard location for 2.1M and 1.9M models is left-hand under cab, Model 520 is in bumper, and for Model 220 it is at the driver step. Plug includes a weather-proof cover that protects the receptacle. This pre-heater keeps the coolant in the engine block from freezing when the engine is not running.	82	2
O	PACCAR 12V Starter, N/A PACCAR MX Engines PACCAR 12-volt electrical system. With centralized power distribution incorporating plug-in style relays. Circuit protection for serviceability, 12-volt light system w/circuit protection circuits number & color coded.	0	0
S	2 PACCAR Premium 12V Starting Batteries 2000 CCA Threaded stud type terminal. Stranded copper battery cables are double aught (00) or larger to reduce resistance.	0	0
O	Low Voltage Disconnect System	0	0
S	DM Advantage ON/OFF Fan Clutch Horton DM Advantage Two-Speed Fan Clutch On/Off for heavy-duty, medium-duty and a variety of off-highway equipment.	0	0
S	18.7 CFM Air Compressor N/A X15. Furnished on engine. Teflon lined stainless steel braided compressor discharge line.	0	0
S	VGT Exhaust Brake (Variable Geometry Turbo). Provides approximately 90-100 HP of retardation and is part of the turbocharger.	0	0

Price Level: January 1, 2022

Deal: NLMTC 537 YM 24

Printed On: 4/14/2022 7:09:28 AM

Date: April 14, 2022

Quote Number: QUO-938666-Z6V6H5



Std/ Opt	Description	\$ List	Weight
S	PACCAR Fuel/Water Separator Standard Service PACCAR Fuel/Water separator standard service intervals. High efficiency media protects critical engine components.	0	0
S	No Fluid Heat Option for Fuel Filter	0	0
S	No Electric Heat Option for Fuel Filter	0	0
O	Engine Protection Shutdown w/ Label Includes oil pressure, oil temperature, coolant temperature, and intake manifold temperature.	5	0
S	High Efficiency Cooling System Cooling module is a combination of steel and aluminum components, with aluminum connections to maximize performance and cooling capability. Silicone radiator & heater hoses enhance value, durability, & reliability. Constant tension band clamps reduce leaks. Chevron Delo Extended Life Coolant (NOAT) extends maintenance intervals reducing maintenance costs. Anti-freeze effective to -30 degrees F helps protect the engine. Low coolant level sensor warns of low coolant condition to prevent engine damage. Radiator Size by Model: 579/367 FEPTO 1325 sq in, 567/365/367: 1440 sq in, 365 FEPTO: 1184 sq in, 389/367 HH: 1669 sq in, 348: 1000 sq in, 520: 1242 sq in.	0	0
S	(1) Air Cleaner Engine Mounted	0	0
S	Exhaust Single RH Horizontal DPF/SCR RH Under Frame.	0	0

Transmission & Equipment

O	Allison 3500 RDS-P Transmission, Gen 5 Rugged Duty Series. Includes Rear Transmission Support except on MX engines, Mobil Delvac Automatic Transmission Fluid, and Water-Oil Heat Exchange. Also includes features that monitor the transmission fluid, filter and clutch condition. Will display percent life remaining for the transmission fluid, filter and clutches on the shift selector. This information may be displayed using the Mode and Up and Down buttons. A wrench icon will also be included to indicate when the transmission fluid, filter or clutches need servicing. Suited for vehicles operating on/off highway and/or requiring PTO operation. Forward ratios: 1st-4.59, 2nd-2.25, 3rd-1.54, 4th-1.00, 5th-0.75, 6th-0.65. Reverse ratios: DR-(5.00).	8,937	459
O	1710 HD Driveline, 2 Midship Bearings	1,026	200
O	PTO F/O Chelsea	0	0
O	Park Brake Interlock For use with transmission mounted PTO	71	2
O	(1) Dash Mounted Single Acting EOH PTO Control Electric-over-hydraulic, spec'ing PTO switch does not ensure the PTO will fit. Sends signal to Allison to engage PTO.	89	1
O	Auto Neutral Activates With Parking Brake	17	0

Price Level: January 1, 2022

Deal: NLMTC 537 YM 24

Printed On: 4/14/2022 7:09:28 AM

Date: April 14, 2022

Quote Number: QUO-938666-Z6V6H5



Std/ Opt	Description	\$ List	Weight
	Auto Neutral helps improve jobsite safety by reducing the possibility of the truck moving due to throttle application.		
O	Allison FuelSense 2.0 Not Desired	0	0
O	Omit Allison Neutral At Stop	0	0
O	Allison 6-Speed Configuration, Wide Ratio Gears	0	0
O	Dash Mounted Push Button Shifter Available with Allison transmissions	513	3
O	LH Mounted Trans PTO Provisions	35	0
Air & Trailer Equipment			
S	Bendix AD-HF Air Dryer, Heater Bendix AD-HF air filters protects the life of your engine system and components. Proven PuraGuard oil coalescing technology in the the air dryer cartridge. This oil coalescing filter ensures the removal of oil and oil aerosols before they can contaminate the moisture removing desiccant.	0	0
O	Pull Cords All Air Tanks	6	0
S	Nylon Chassis Hose	0	0
S	Steel Painted Air Tanks All air tanks are steel with painted finish except when Code 4543330 Polish Aluminum Air Tanks is also selected (then exposed air tanks outside the frame rails will be polished aluminum). Peterbilt will determine the optimal size and location of required air tanks. Narratives requesting a specific air tank size or location will not be accepted for factory installation. See ECAT to determine number or location of air tanks installed.	0	0
O	Clear Outside Frame of All Air System Components LH BOC	613	0
O	Clear Outside Frame of All Air System Components RH BOC	613	0
O	Body Connections 5' BOC Junction box contains light and power circuits for body connections located 5' from back-of-cab	82	4
Tires & Wheels			
O	FF: BR 14ply 11R22.5 R268 Ecopia Efficiency Rating: Poor R268 tread is not a Line Haul tire and is only for Pickup and Delivery or Regional use. Diameter = 41.5 inches; SLR = 19.3 inches	91	16
O	RR: BR 14 PLY 11R22.5 M760 Ecopia Efficiency Rating: Poor Diameter= 42.2 inches; SLR= 19.6 inches	456	44

Price Level: January 1, 2022

Deal: NLMTC 537 YM 24

Printed On: 4/14/2022 7:09:28 AM

Date: April 14, 2022

Quote Number: QUO-938666-Z6V6H5



Std/ Opt	Description	\$ List	Weight
O	Code-rear Tire Qty 04	0	0
O	FF: Alcoa ULT397 22.5X8.25 High Polish Aluminum. Built for heavy-duty applications and are light weight. Available with polished and Dura-Bright finishes.	296	-50
S	RR: Accur Std Armor 51455PK 22.5X8.25 PHP10-5 hand holes.	0	0
O	Code-rear Rim Qty 04	0	0
Fuel Tanks			
O	D-Shaped Aluminum 50 Gallon Fuel Tank LH U/C Non-slip step LH under cab	79	-10
O	Location LH U/C 50 Gallon	0	0
S	DEF Tank Mounted LH BOC Models 220 and 520 mounted left hand back-of-cab.	0	0
O	DEF To Fuel Ratio 2:1 Or Greater	0	0
S	DEF Tank Small, HD 14 Gal 2.1M MD 5.5 Gal	0	0
Battery Box & Bumper			
O	MD Battery Box, Non-Slip Step RH Under Cab	122	0
O	Aluminum Battery Box Cover	123	4
S	Aero Bumper Molded One Piece Gray ***Warning*** Due to a new legal regulations, all New Medium Duty trucks require headlights to be located in the bumper when the chassis height is GREATER than the following chassis height: Measurement to bottom of frame at front of frame: for the 107 Aero Hood 32.6, for the 109 Aero Hood 31.4, for the 109 Vocational Hood 26.7. Work with applications if your chassis height is unacceptable.	0	0
Cab & Equipment			
S	Aerodynamic 107in BBC Aluminum Cab & SMC Hood With molded gray crown. ***Warning***Due to a new legal regulations, all New Medium Duty trucks require headlights to be located in the bumper when the chassis height is GREATER than the following chassis height:	0	0
O	Thermal Insulation Package in Cab Includes thick, closed-cell foam in floor, special mylar-faced foam in walls and roof structure.	67	2
O	Hood Crown - Bright Finish ipo Molded Gray	89	0
S	Seats Inc. Driver Seat	0	0

Price Level: January 1, 2022
Deal: NLMTC 537 YM 24
Printed On: 4/14/2022 7:09:28 AM

Date: April 14, 2022
Quote Number: QUO-938666-Z6V6H5



Std/ Opt	Description	\$ List	Weight
S	(2) Person Passenger Seat	0	0
O	Drivers Armrests - LH & RH	56	4
O	Seat Belt Color Orange IPO Standard Black	10	0
S	Toolbox Under Passenger Seat Non-Suspension Seat	0	0
S	Air Ride Driver	0	0
S	Mid Back Driver	0	0
S	Vinyl Driver	0	0
S	Non-Air Ride Passenger	0	0
S	Low Back Passenger	0	0
S	Vinyl Passenger	0	0
O	Metal Interior Door Panel Kick Plates	67	2
S	Adjustable Steering Column - Tilt/Telescope	0	0
S	Steering Wheel With Peterbilt Logo Steering Wheel with embossed Peterbilt logo over horn button.	0	0
O	Probilt Interior Grey/Black - Curved Roof	176	0
O	Exterior Cab Entry Grabhandle Textured; NFPA compliant. Available on Day Cab specifications only.	169	0
S	Day Cab Rear Window Day cab rear window flush to back of cab.	0	0
S	1-Piece Glass Rear Cab Window Fixed	0	0
S	1-Piece Curved Windshield	0	0
S	Power Door Locks and Power Window Lifts Standard	0	0
S	Combo Fresh Air Heater/Air Conditioner With radiator mounted condenser, dedicated side window defrosters, Bi-Level Heater/Defroster Controls, 54,500 BTU/HR, and silicone heater hoses.	0	0
O	Outside Sunvisor - Stainless Steel Not available with 2.1M high roof sleeper.	250	4
O	Aero Rear View Mirror Housing, Bright Finish	173	3
O	Peterbilt Aero Rear View Mirror, Motorized	257	3

Price Level: January 1, 2022

Deal: NLMTC 537 YM 24

Printed On: 4/14/2022 7:09:28 AM

Date: April 14, 2022

Quote Number: QUO-938666-Z6V6H5



Std/ Opt	Description	\$ List	Weight
	Includes top mirror with motorized, adjustable dual axis heated glass. Bottom mirror is an integrated convex surface. Includes black textured arms with breakaway feature.		
S	Look Down Mirror Over Passenger Door with Black Housing	0	0
O	Air Horn Mounted Under Cab	64	8
O	ConcertClass, AM/FM, Weatherband, 3.5 Aux	331	11
O	Standard Speaker Package For Cab (2) Speakers	50	4
O	Radio Mute When In Reverse For automatic or automated transmission	0	0
O	Bluetooth Phone and Audio Requires USB Port	38	0
O	USB Port	38	0
S	Peterbilt Electric Windshield Wipers With Intermittent Feature.	0	0
O	Cab Air Suspension	177	15
O	Auto Reset Circuit Protection Daycab and Sleeper	19	0
O	Triangle Reflector Kit, Ship Loose Florescent triangle emergency road flares are designed to meet and exceed all DOT standards.	18	13
O	Fire Extinguisher, Mounted Outboard Driver Seat Hazmat approval UL listed/rated ABC	56	9
O	Cruise Control Inactive With Wipers On	0	0
O	Backup Alarm (107 DB)	34	3
O	Transmission Oil Temperature (Main) Located in Digital Cluster Display.	24	0
S	Air Restriction Indicator Mounted on air cleaner, intake piping, or firewall	0	0
O	Speedo/Odometer Disconnect When PTO Is Engaged	0	0
O	Engine Hourmeter Gauge Located in Digital Cluster Display	0	0
O	Engine Manifold Pressure (Turbo Boost) Located in Digital Cluster Display	0	0
O	Engine Percent Torque Located in Digital Cluster Display	0	0
S	Main Instrumentation Panel Digital Cluster 7" Display includes: Physical (Analog) - Speedometer, Tachometer, Oil Pressure, Coolant Temp and Display Gauges - Fuel	0	0

Price Level: January 1, 2022
Deal: NLMTC 537 YM 24
Printed On: 4/14/2022 7:09:28 AM

Date: April 14, 2022
Quote Number: QUO-938666-Z6V6H5



Std/ Opt	Description	\$ List	Weight
	Level, DEF Level, DPF Filter Status, Fuel Economy, Volts Telltale, OAT and Primary Air Pressure, Secondary Air Pressure for air brake trucks.		
O	Voltmeter Gauge (MD/520 Only) Located in Digital Cluster Display	0	0
S	Headlights Composite Fender Mounted Integral park, turn, and side marker	0	0
S	(5) Marker Lights, Aero LED	0	0
S	Self-Canceling Turn Signal	0	0
O	Incandescent Square Stop/Turn/Tail/Backup Left-hand / right-hand square end of frame or dropped a-brace	-2	9
O	(1) F/O Load Light, Switch, (2) 10" Wire Coils (1) furnished by owner load light, switch, (2) 10" wire coils, under cab/sleeper.	91	4

Paint

O	Standard Paint Color Selection	-200	0
S	(1) Color Axalta Two Stage - Cab/Hood Base Coat/Clear Coat N85020 A - L0006EY WHITE N85500 CAB ROOF L0006EY WHITE N85300 FENDER L0006EY WHITE N85200 FRAME L0001EA BLACK N85400 HOOD TOP L0006EY WHITE	0	0

Shipping Destination

Options Not Subject To Discount

S	Peterbilt Class 7 Standard Coverage 1 year/Unlimited Miles/km	0	0
O	Prepaid Freight Increase For 2022 Delivery	500	0
O	Base Warr: Emissions 5YR/100K MI-EPA Engine	0	0

Miscellaneous

S	Aero Hood (MODEL 537)	0	0
O	State Registry: South Carolina	0	0

Promotions

Order Comments

Price Level: January 1, 2022
Deal: NLMTC 537 YM 24
Printed On: 4/14/2022 7:09:28 AM

Date: April 14, 2022
Quote Number: QUO-938666-Z6V6H5



Total Weight

11,862

Prices and Specifications Subject to Change Without Notice.

Unpublished options may require review/approval.

Dimensional and performance data for unpublished options may vary from that displayed in CRM.

PRICING DISCLAIMER

While we make every effort to maintain the web site to preserve pricing accuracy, prices are subject to change without notice. Although the information in this price list is presented in good faith and believed to be correct at the time of printing, we make no representations or warranties as to the completeness or accuracy of this information. We reserve the right to change, delete or otherwise modify the pricing information which is represented herein without any prior notice. We carefully check pricing specifications, but occasionally errors can occur, therefore we reserve the right to change such prices without notice. We disclaim all liability for any errors or omissions in the materials. In no event will we be responsible for any damages of any nature whatsoever from the reliance upon information from these materials. Please check your order prebills to confirm your pricing information



Shipping Destinations

Intermediate Destination: NONE

Final Destinations	Quantity
--------------------	----------