

BRUSH HAWG MODEL G-2224C & INTERNATIONAL MV607

30" DIAMETER SLEWING RING BEARING
PLANETARY GEAR BOX WITH DISC DRIVE MOTOR
DUAL STAND-UP MULTI-LEVER CONTROLS
CENTERED STABILIZER & DUMP BODY LEVER CONTROLS
DUAL OPERATOR STATIONS
24" WALK-THROUGH
18' TAPERED DUMP BODY (42"-74")
4" X-MEMBERS ON 12" CENTERS, DOUBLED AT FLOOR SEAMS
7 GA 3-PIECE FLOOR GRADE 50
10 GA SIDES, FRONT SHEET, & TAILGATE SHEET GRADE 80
10 GA 4-WAY BEND SIDE POSTS ON 24" CENTERS
11 GA TUBING TOP RAIL
SINGLE SIDE-HINGED TAILGATE WITH (3) HINGE ASSEMBLIES
15 TON SCISSOR HOIST
4-WAY ADJUSTABLE STABILIZERS
MAIN BOOM, TIP BOOM, & TIP BOOM EXTENSION
HEAVY DUTY BUCKET WITH 360 DEGREE ROTATOR (NO STOPS)
HOT SHIFT PTO, SINGLE STAGE DM PUMP, & EOS
COLOR LCD REAR VISION CAMERA SYSTEM
ALL LED BODY LIGHTS
DUAL UPPER TAILGATE BRAKE LIGHTS
DUAL UPPER TAILGATE AMBER STROBING LIGHTS
MOUNTED ON SUITABLE CUSTOMER FURNISHED CHASSIS
PAINTED ANY TWO COLORS (LOADER & DUMP BODY)
DUMP BODY UNDERCOATING
OWNER/OPERATOR TRAINING
STANDARD WARRANTY
DELIVERED ANYWHERE IN NC

\$240,954.00

BRUSH HAWG®

C-MODEL (MULTI-LEVER)



***Shown with optional equipment**

STANDARD FEATURES

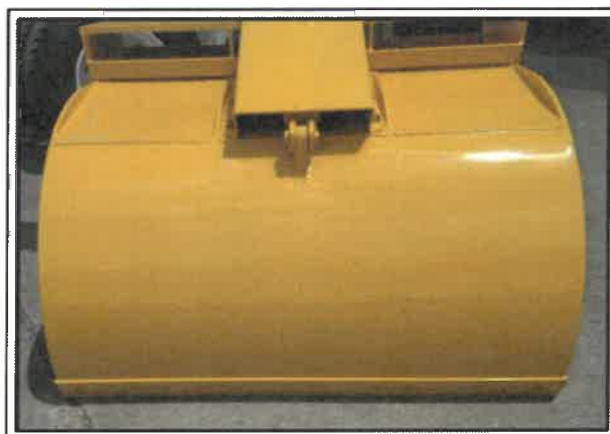
- 30" Diameter Slewing Ring Bearing
- 2-Stage Planetary Gear Box
- Disc-Valve Motor
- 20'-8" Overall Reach
- Excellent Below Grade Reach
- Dual Stand-Up Operator Stations w/ 24" Walk-Through
- 4-Way Adjustable Stabilizers
- 48" x 60" Bucket
- 15 Ton Scissor Hoist
- 18' Dump Body



Multi-Lever
Controls



Bolt-On Bucket Cylinder
Covers & Reversible
Bolt-On Bucket Edges



Tip Boom
Hose Retract Box



CURBTENDER
SWEEPERS, LLC

701 Performance Drive ♦ Cedar Falls, IA 50613
319.266.1721 ♦ www.brushhawg.com

All designs and specifications are subject to change at the manufacturer's sole discretion at any time without notice. The data published herein is informational in nature and should not be misconstrued to warrant suitability of the unit for any purpose as performance may vary with the conditions encountered. Products must be installed and operated with all applicable standards, codes, regulations, and recommended safety procedures.

Prepared For:
Nu-Life Environmental
Stuart Simmons
4821 Calhoun Memorial Hwy
Easley, SC 29640-3853
(864)295 - 2183
Reference ID: knuckleboom

Presented By:
CAROLINA INTERNATIONAL TRUCKS, INC
Steve Wiser
1619 BLUFF RD
COLUMBIA SC 29201 -
(803)799-4923

Thank you for the opportunity to provide you with the following quotation on a new International truck. I am sure the following detailed specification will meet your operational requirements, and I look forward to serving your business needs.

Model Profile
2024 MV607 SBA (MV607)

AXLE CONFIG:	4X2
APPLICATION:	Flat Dump
MISSION:	Requested GVWR: 33000. Calc. GVWR: 33000. Calc. GCWR: 60000 Calc. Start / Grade Ability: 39.79% / 2.56% @ 55 MPH Calc. Geared Speed: 78.2 MPH
DIMENSION:	Wheelbase: 254.00, CA: 186.90, Axle to Frame: 85.00
ENGINE, DIESEL:	{Cummins L9 260} EPA 2021, 260HP @ 2200 RPM, 860 lb-ft Torque @ 1200 RPM, 2200 RPM Governed Speed, 260 Peak HP (Max)
TRANSMISSION, AUTOMATIC:	{Allison 3500 RDS} 5th Generation Controls, Wide Ratio, 6-Speed with Double Overdrive, with PTO Provision, Less Retarder, Includes Oil Level Sensor, with 80,000-lb GVW and GCW Max, On/Off Highway
CLUTCH:	Omit Item (Clutch & Control)
AXLE, FRONT NON-DRIVING:	{Dana Spicer E-1202IR} I-Beam Type, 12,000-lb Capacity
AXLE, REAR, SINGLE:	{Dana Spicer 21060S} Single Reduction, 21,000-lb Capacity, R Wheel Ends Gear Ratio: 5.29
CAB:	Conventional, Day Cab
TIRE, FRONT:	(2) 11R22.5 Load Range G HSR2 (CONTINENTAL), 498 rev/mile, 75 MPH, All-Position
TIRE, REAR:	(4) 11R22.5 Load Range G HDR2+ (CONTINENTAL), 491 rev/mile, 75 MPH, Drive
SUSPENSION, REAR, SINGLE:	23,500-lb Capacity, Vari-Rate Springs, with 4500-lb Capacity Auxiliary Rubber Springs
PAINT:	Cab schematic 100WP Location 1: 9219, Winter White (Std) Chassis schematic N/A

<u>Code</u>	<u>Description</u>
MV60700	Base Chassis, Model MV607 SBA with 254.00 Wheelbase, 186.90 CA, and 85.00 Axle to Frame.
1570	TOW HOOK, FRONT (2) Frame Mounted
1ANA	AXLE CONFIGURATION {Navistar} 4x2
	<u>Notes</u> : Pricing may change if axle configuration is changed.
1CAG	FRAME RAILS Heat Treated Alloy Steel (120,000 PSI Yield); 10.250" x 3.610" x 0.375" (260.4mm x 91.7mm x 9.5mm); 456.0" (11582mm) Maximum OAL
1LEG	LICENSE PLATE HOLDER Includes Upper & Lower Mounting Plate Hardware, Mounted in Existing Holes in Front Bumper
1LNG	BUMPER, FRONT Contoured, Steel, Painted Gloss Black
1SAL	CROSSMEMBER, REAR, AF (1)
1WEJ	WHEELBASE RANGE 199" (505cm) Through and Including 254" (645cm)
2AYW	AXLE, FRONT NON-DRIVING {Dana Spicer E-1202IR} I-Beam Type, 12,000-lb Capacity
3770	SPRINGS, FRONT AUXILIARY Rubber
3ADC	SUSPENSION, FRONT, SPRING Parabolic Taper Leaf, Shackle Type, 12,000-lb Capacity, with Shock Absorbers
	<u>Includes</u> : SPRING PINS Rubber Bushings, Maintenance-Free
4091	BRAKE SYSTEM, AIR Dual System for Straight Truck Applications
	<u>Includes</u> : BRAKE LINES Color and Size Coded Nylon : DRAIN VALVE Twist-Type : GAUGE, AIR PRESSURE (2) Air 1 and Air 2 Gauges; Located in Instrument Cluster : PARKING BRAKE CONTROL Yellow Knob, Located on Instrument Panel : PARKING BRAKE VALVE For Truck : QUICK RELEASE VALVE On Rear Axle for Spring Brake Release: 1 for 4x2, 2 for 6x4 : SPRING BRAKE MODULATOR VALVE R-7 for 4x2, SR-7 with relay valve for 6x4/8x6
4AZA	AIR BRAKE ABS {Bendix AntiLock Brake System} 4-Channel (4 Sensor/4 Modulator) Full Vehicle Wheel Control System
4EDR	AIR DRYER {Wabco HP} with Heater
4EXP	BRAKE CHAMBERS, FRONT AXLE {Bendix} 20 SqiIn
4EXU	BRAKE CHAMBERS, REAR AXLE {Bendix EverSure} 30/30 SqiIn Spring Brake
4LAG	SLACK ADJUSTERS, FRONT {Gunite} Automatic
4LGG	SLACK ADJUSTERS, REAR {Gunite} Automatic
4SPA	AIR COMPRESSOR {Cummins} 18.7 CFM
4VKH	AIR TANK LOCATION (2) Mounted Under Battery Box, Outside Right Rail, Under Cab
4VLE	AIR DRYER LOCATION Mounted Inside Engine Compartment, Right Side
4XDC	BRAKES, FRONT {Meritor 15X4 Q-PLUS CAST} Air S-Cam Type, Cast Spider, Fabricated Shoe, Double Anchor Pin, Size 15" X 4", 13,200-lb Capacity
4XDR	BRAKES, REAR {Meritor 16.5X7 Q-PLUS CAST} Air S-Cam Type, Cast Spider, Fabricated Shoe, Double Anchor Pin, Size 16.5" X 7", 23,000-lb Capacity per Axle

<u>Code</u>	<u>Description</u>
5710	STEERING COLUMN Tilting and Telescoping
5CAW	STEERING WHEEL 4-Spoke; 18" Dia., Black
5PSA	STEERING GEAR {Sheppard M100} Power
6DGC	DRIVELINE SYSTEM {Dana Spicer} SPL170, for 4x2/6x2
7BMM	EXHAUST SYSTEM Horizontal Aftertreatment System, Frame Mounted Under Right Rail Back of Cab, for Single Long Horizontal Tail Pipe
7SCP	ENGINE EXHAUST BRAKE for Cummins ISB/B6.7/ISL/L9 Engine with Variable Vane Turbo Charger
7WBZ	TAIL PIPE (1) Horizontal, Long, Exits Right Side Outside of Body at Rear Wheels
8000	ELECTRICAL SYSTEM 12-Volt, Standard Equipment
	<u>Includes</u>
	: DATA LINK CONNECTOR For Vehicle Programming and Diagnostics In Cab
	: HAZARD SWITCH Push On/Push Off, Located on Instrument Panel to Right of Steering Wheel
	: HEADLIGHT DIMMER SWITCH Integral with Turn Signal Lever
	: PARKING LIGHT Integral with Front Turn Signal and Rear Tail Light
	: STARTER SWITCH Electric, Key Operated
	: STOP, TURN, TAIL & B/U LIGHTS Dual, Rear, Combination with Reflector
	: TURN SIGNAL SWITCH Self-Cancelling for Trucks, Manual Cancelling for Tractors, with Lane Change Feature
	: TURN SIGNALS, FRONT Includes Reflectors and Auxiliary Side Turn Signals, Solid State Flashers; Flush Mounted
	: WINDSHIELD WIPER SWITCH 2-Speed with Wash and Intermittent Feature (5 Pre-Set Delays), Integral with Turn Signal Lever
	: WINDSHIELD WIPERS Single Motor, Electric, Cowl Mounted
	: WIRING, CHASSIS Color Coded and Continuously Numbered
8518	CIGAR LIGHTER Includes Ash Cup
8GXD	ALTERNATOR {Leece-Neville AVI160P2013} Brush Type, 12 Volt, 160 Amp Capacity, Pad Mount, with Remote Sense
8HAB	BODY BUILDER WIRING Back of Day Cab at Left Frame or Under Sleeper, Extended or Crew Cab at Left Frame; Includes Sealed Connectors for Tail/Amber Turn/Marker/ Backup/Accessory Power/Ground and Sealed Connector for Stop/Turn
8NBR	BATTERY SYSTEM {JCI} Maintenance-Free, (3) 12-Volt 2100CCA Total, Top Threaded Stud
8RMZ	SPEAKERS (2) 6.5" Dual Cone Mounted in Both Doors, (2) 5.25" Dual Cone Mounted in Both B-Pillars
8RPP	ANTENNA Shark Fin, Roof Mounted
8RPS	RADIO AM/FM/WB/Clock/Bluetooth/USB Input/Auxiliary Input
8THB	BACK-UP ALARM Electric, 102 dBA
8VBE	HORN, ELECTRIC (1) Trumpet Style
8VUX	BATTERY BOX Steel, with Plastic Cover, 25" Wide, 2-3 Battery Capacity, Mounted Right Side Under Cab
8VZK	TURN SIGNALS, FRONT Dual Face, LED, Amber/Red, Mounted on Top of Fender, Used with Standard Flush Mounted Front Turn Signal, Side Marker Lamps, Parking Lights and Reflectors
8WPH	CLEARANCE/MARKER LIGHTS (5) {Truck Lite} Amber LED Lights, Flush Mounted on Cab or Sunshade
8WPZ	TEST EXTERIOR LIGHTS Pre-Trip Inspection will Cycle all Exterior Lamps Except Back-up Lights
8WTK	STARTING MOTOR {Delco Remy 38MT Type 300} 12 Volt, Less Thermal Over-Crank Protection
8WWJ	INDICATOR, LOW COOLANT LEVEL with Audible Alarm

<u>Code</u>	<u>Description</u>
8XAH	CIRCUIT BREAKERS Manual-Reset (Main Panel) SAE Type III with Trip Indicators, Replaces All Fuses
8XHN	HORN, AIR Single Trumpet, Black, with Lanyard Pull Cord
8XNY	HEADLIGHTS Halogen
9AAB	LOGOS EXTERIOR Model Badges
9AAE	LOGOS EXTERIOR, ENGINE Badges
9HCY	GRILLE Molded in Black, with Chrome Surround
9WBN	FENDER EXTENSIONS Painted
9WBW	FRONT END Tilting, Fiberglass, with Three Piece Construction, Dual Air Intakes
10060	PAINT SCHEMATIC, PT-1 Single Color, Design 100
	<u>Includes</u> : PAINT SCHEMATIC ID LETTERS "WP"
10761	PAINT TYPE Base Coat/Clear Coat, 1-2 Tone
10AGB	COMMUNICATIONS MODULE Telematics Device with Over the Air Programming; Includes Five Year Data Plan and International 360
10BAE	LABEL, DEF "DEF ONLY"
10WCY	SAFETY TRIANGLES
10WUE	MUD FLAPS, FRONT WHEELS (2) Rubber, Mounted on Fender Extension
11001	CLUTCH Omit Item (Clutch & Control)
12703	ANTI-FREEZE Red, Extended Life Coolant; To -40 Degrees F/ -40 Degrees C, Freeze Protection
12849	BLOCK HEATER, ENGINE 120V/1000W, for Cummins ISB/B6.7/ISL/L9 Engines
	<u>Includes</u> : BLOCK HEATER SOCKET Receptacle Type; Mounted below Drivers Door
12ESJ	ENGINE, DIESEL {Cummins L9 260} EPA 2021, 260HP @ 2200 RPM, 860 lb-ft Torque @ 1200 RPM, 2200 RPM Governed Speed, 260 Peak HP (Max)
12THT	FAN DRIVE {Horton Drivemaster} Two-Speed Type, Direct Drive, with Residual Torque Device for Disengaged Fan Speed
	<u>Includes</u> : FAN Nylon
12VCE	AIR CLEANER Single Element, Fire Retardant Media
12VJC	EMISSION, CALENDAR YEAR {Cummins L9} EPA, OBD and GHG Certified for Calendar Year 2022
12VXT	THROTTLE, HAND CONTROL Engine Speed Control; Electronic, Stationary, Variable Speed; Mounted on Steering Wheel
12WZB	CARB IDLE COMPLIANCE Low NOx Idle Engine, Complies with California Clean Air Regulations; Includes "Certified Clean Idle" Decal on Hood
12WZY	CARB EMISSION WARR COMPLIANCE for Cummins L9 Engines
12XBM	ENGINE CONTROL, REMOTE MOUNTED Provision for; Includes Wiring for Body Builder Installation of PTO Controls and Starter Lockout, with Ignition Switch Control, for Cummins B6.7 and L9 Engines
12XCA	RADIATOR Aluminum, 3-Row, Down Flow, Front to Back System, 837 SqIn Louvered, with 477 SqIn Charge Air Cooler, Includes In-Tank Oil Cooler

<u>Code</u>	<u>Description</u>
13AVL	TRANSMISSION, AUTOMATIC {Allison 3500 RDS} 5th Generation Controls, Wide Ratio, 6-Speed with Double Overdrive, with PTO Provision, Less Retarder, Includes Oil Level Sensor, with 80,000-lb GVW and GCW Max, On/Off Highway
13WET	TRANSMISSION SHIFT CONTROL Column Mounted Stalk Shifter, Not for Use with Allison 1000 & 2000 Series Transmission
13WLP	TRANSMISSION OIL Synthetic; 29 thru 42 Pints
13WUC	ALLISON SPARE INPUT/OUTPUT for Rugged Duty Series (RDS) and Regional Haul Series (RHS), General Purpose Trucks, Construction, Package Number 223
13WVV	NEUTRAL AT STOP Allison Transmission Shifts to Neutral When Service Brake is Depressed and Vehicle is at Stop; Remains in Neutral Until Service Brake is Released
13WYU	SHIFT CONTROL PARAMETERS {Allison} 3000 or 4000 Series Transmissions, Performance Programming
13XAL	PTO LOCATION Customer Intends to Install PTO at Left Side of Transmission
14AWD	AXLE, REAR, SINGLE {Dana Spicer 21060S} Single Reduction, 21,000-lb Capacity, R Wheel Ends . Gear Ratio: 5.29
14VAH	SUSPENSION, REAR, SINGLE 23,500-lb Capacity, Vari-Rate Springs, with 4500-lb Capacity Auxiliary Rubber Springs
14WMN	AXLE, REAR, LUBE {EmGard FE-75W-90} Synthetic Oil; 1 thru 29.99 Pints
15LMN	FUEL/WATER SEPARATOR {Racor 400 Series,} 12 VDC Electric Heater, Includes Pre-Heater, with Primer Pump, Includes Water-in-Fuel Sensor
15LRE	LOCATION FUEL/WATER SEPARATOR Mounted Under Hood, Left Side, Above Front Axle
15SGG	FUEL TANK Top Draw, Non-Polished Aluminum, D-Style, 19" Tank Depth, 70 US Gal (265L), Mounted Left Side, Under Cab
15WDG	DEF TANK 7 US Gal (26L) Capacity, Frame Mounted Outside Left Rail, Under Cab
16030	CAB Conventional, Day Cab
	<u>Includes</u> : CLEARANCE/MARKER LIGHTS (5) Flush Mounted
16BAM	AIR CONDITIONER with Integral Heater and Defroster
16GED	GAUGE CLUSTER Base Level; English with English Electronic Speedometer
	<u>Includes</u> : GAUGE CLUSTER DISPLAY: Base Level (3" Monochromatic Display), Premium Level (5" LCD Color Display); Odometer, Voltmeter, Diagnostic Messages, Gear Indicator, Trip Odometer, Total Engine Hours, Trip Hours, MPG, Distance to Empty/Refill for : GAUGE CLUSTER Speedometer, Tachometer, Engine Coolant Temp, Fuel Gauge, DEF Gauge, Oil Pressure Gauge, Primary and Secondary Air Pressure or Auxiliary Air Pressure (if Air Equipped) : WARNING SYSTEM Low Fuel, Low DEF, Low Oil Pressure, High Engine Coolant Temp, Low Battery Voltage (Visual and Audible), Low Air Pressure, Primary and Secondary (if Air Equipped)
16HHE	GAUGE, AIR CLEANER RESTRICTION {Filter-Minder} with Black Bezel, Mounted in Instrument Panel
16HKT	IP CLUSTER DISPLAY On Board Diagnostics Display of Fault Codes in Gauge Cluster
16JNT	SEAT, DRIVER {National 2000} Air Suspension, High Back with Integral Headrest, Vinyl, Isolator, 1 Chamber Lumbar, with 2 Position Front Cushion Adjust, -3 to +14 Degree Angle Back Adjust
16KAW	SEAT, TWO-MAN PASSENGER {National} Vinyl, with Under Seat Storage Compartment
16SED	GRAB HANDLE, EXTERIOR (2) Black, Aluminum, for Cab Entry Mounted Left and Right Side at B-Pillar

<u>Code</u>	<u>Description</u>
16SNS	MIRRORS (2) Aero Pedestal, Power Adjust, Heated, Black Heads and Arms, 6.5" x 14" Flat Glass, Includes 6.5" x 6" Convex Mirrors, for 102" Load Width
	<u>Notes</u> : Mirror Dimensions are Rounded to the Nearest 0.5"
16VKB	CAB INTERIOR TRIM Classic, for Day Cab
	<u>Includes</u> : CONSOLE, OVERHEAD Molded Plastic with Dual Storage Pockets, Retainer Nets and CB Radio Pocket; Located Above Driver and Passenger : DOME LIGHT, CAB Door Activated and Push On-Off at Light Lens, Timed Theater Dimming, Integral to Overhead Console, Center Mounted : SUN VISOR (2) Padded Vinyl; 2 Moveable (Front-to-Side) Primary Visors, Driver Side with Toll Ticket Strap
16VLK	CAB REAR SUSPENSION Air Suspension, for Mid Cab Height
16WHJ	HOSE CLAMPS, HEATER HOSE {Breeze} Belleville Washer Type
16WJU	WINDOW, POWER (2) and Power Door Locks, Left and Right Doors, Includes Express Down Feature
16WLS	FRESH AIR FILTER Attached to Air Intake Cover on Cowl Tray in Front of Windshield Under Hood
16WSE	LOW WASHER FLUID INDICATOR
16XJN	INSTRUMENT PANEL Flat Panel
16ZBT	ACCESS, CAB Steel, Driver & Passenger Sides, Two Steps per Door, for use with Day Cab and Extended Cab
27DWH	WHEELS, FRONT {Alcoa ULT39} DISC; 22.5x8.25 Rims, Brush Finish Aluminum, 10-Stud, 285.75mm BC, Hub-Piloted, Flanged Nut, with Steel Hubs
28DTJ	WHEELS, REAR {Maxion 90541} DUAL DISC; 22.5x8.25 Rims, Painted Steel, 2-Hand Hole, 10-Stud, 285.75mm BC, Hub-Piloted, Flanged Nut, with Steel Hubs
29PAS	PAINT IDENTITY, REAR WHEELS Disc Rear Wheels; with Vendor Applied White Powder Coat Paint
29PBZ	COATING IDENTITY, FRONT WHEELS {Alcoa Dura-Bright XBR/EVO} Disc Front Wheels, Aluminum, with Vendor Applied Treatment, Not for Wide Base
29WLK	WHEEL BEARING, FRONT, LUBE {EmGard FE-75W-90} Synthetic Oil
7372135415	(2) TIRE, FRONT 11R22.5 Load Range G HSR2 (CONTINENTAL), 498 rev/mile, 75 MPH, All-Position
7372135444	(4) TIRE, REAR 11R22.5 Load Range G HDR2+ (CONTINENTAL), 491 rev/mile, 75 MPH, Drive

Services Section:

40129	WARRANTY Standard for MV Series, Effective with Vehicles Built July 1, 2017 or Later, CTS-2020A
Body/Allied Equipment	
<u>Code</u>	<u>Description</u>
Goods Purchased	
<u>Code</u>	<u>Description</u>