

BRUSH HAWG MODEL G-2224C STANDARD FEATURES

30" DIAMETER SLEWING RING BEARING
PLANETARY GEAR BOX WITH DISC DRIVE MOTOR
DUAL STAND-UP MULTI-LEVER CONTROLS
CENTERED STABILIZER & DUMP BODY LEVER CONTROLS
DUAL OPERATOR STATIONS
24" WALK-THROUGH
18' TAPERED DUMP BODY (42"-74")
4" X-MEMBERS ON 12" CENTERS, DOUBLED AT FLOOR SEAMS
7 GA 3-PIECE FLOOR GRADE 50
10 GA SIDES, FRONT SHEET, & TAILGATE SHEET GRADE 80
10 GA 4-WAY BEND SIDE POSTS ON 24" CENTERS
11 GA TUBING TOP RAIL
SINGLE SIDE-HINGED TAILGATE WITH (3) HINGE ASSEMBLIES
15 TON SCISSOR HOIST
4-WAY ADJUSTABLE STABILIZERS
MAIN BOOM, TIP BOOM, & TIP BOOM EXTENSION
HEAVY DUTY BUCKET WITH 360 DEGREE ROTATOR (NO STOPS)
HOT SHIFT PTO, SINGLE STAGE DM PUMP, & EOS
COLOR LCD REAR VISION CAMERA SYSTEM
ALL LED BODY LIGHTS
DUAL UPPER TAILGATE BRAKE LIGHTS
DUAL UPPER TAILGATE AMBER STROBING LIGHTS
MOUNTED ON SUITABLE CUSTOMER FURNISHED CHASSIS
PAINTED ANY TWO COLORS (LOADER & DUMP BODY)
DUMP BODY UNDERCOATING
OWNER/OPERATOR TRAINING
STANDARD WARRANTY
DELIVERED ANYWHERE IN NC

\$106,921.00

BRUSH HAWG®

C-MODEL (MULTI-LEVER)



**Shown with optional equipment*

STANDARD FEATURES

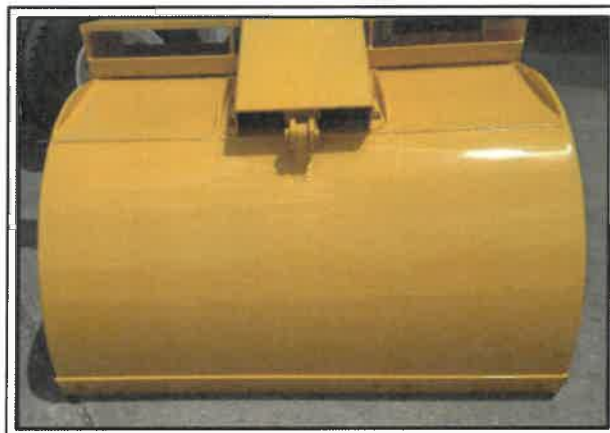
- 30" Diameter Slewing Ring Bearing
- 2-Stage Planetary Gear Box
- Disc-Valve Motor
- 20'-8" Overall Reach
- Excellent Below Grade Reach
- Dual Stand-Up Operator Stations w/ 24" Walk-Through
- 4-Way Adjustable Stabilizers
- 48" x 60" Bucket
- 15 Ton Scissor Hoist
- 18' Dump Body



Multi-Lever
Controls



Bolt-On Bucket Cylinder
Covers & Reversible
Bolt-On Bucket Edges



Tip Boom
Hose Retract Box



CURBTENDER
SWEEPERS, LLC

701 Performance Drive ♦ Cedar Falls, IA 50613
319.266.1721 ♦ www.brushhawg.com

All designs and specifications are subject to change at the manufacturer's sole discretion at any time without notice. The data published herein is informational in nature and should not be misconstrued to warrant suitability of the unit for any purpose as performance may vary with the conditions encountered. Products must be installed and operated with all applicable standards, codes, regulations, and recommended safety procedures.