

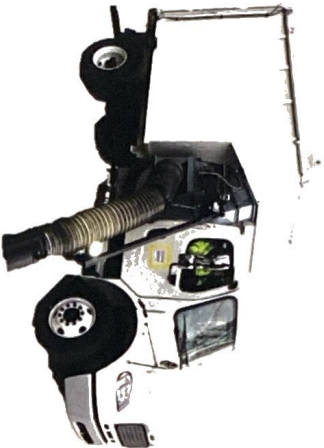


GETTING MORE DONE™, Efficiently!



Walkaround Outline for the ODB DCL1000SE – Single Engine!

The Most Powerful AND Efficient Debris Collection System



Right Front Tire:

- Overview on ODB/XtremeVac™ DCL1000SE
- 25CY
- Single Engine
- 102" Overall Width

Left Front Tire:

- Hopper
- VPD
- Hydraulics

Left side of Unit:

- Vents

Rear of unit:

- Rear door

Right Side of unit:

- Boom
- Swing out blower housing
- Controls

After demonstration

- Ask questions
- Ask for order
- Provide follow up information



GETTING MORE DONE™, Efficiently!



SPECIFICATIONS: DCL1000SE

Chassis

- FL M2 106 Chassis 33,000 GVWR
- Engine forward for less particulate matter build up
- Cummins 6.7L 240 HP 660 LB-FT @1600 RPM
- Turbo Diesel 18.7 CFM Compressor
- Allison 2500, w/ Marmon Herrington VPD
- 11,000 lb FAWR, 22,000 lb RAWR
- 70 Gallon Fuel Tank
- Block heater Phillips 1000 W / 115 Volt
- Detroit Fuel / Water separator w/heater
- Dual steering controls - Standard
- Dual premium high back air suspension seats w integrated lumbar support, adj shock absorber
- A/C, Power windows, AM/FM Radio

Variable Power Divider

- Marmon Herrington VPD
- In Highway mode, trucks throttle pedal response is identical to standard truck.
- In Work mode, engine RPM is increased to 2,000. Throttle pedal response "feels" the same for travel speed.
- Switch into and out of work mode within 1 second
- PTO spins drive shaft to power hydraulic pumps for fan and boom.

Hydraulic System

- Variable Displacement 100cc hydraulic pump is driven by VPD PTO output
- Fixed displacement gear pump powers boom, dump and door latch
- Hydraulic charge filter, return filter and pressure filter (annual service)
- Pressure compensated proportional hydraulic control valve with manual overrides
- System diagnostics for filter replacement, hydraulic pressure, and temperature.

Fan and Blower Design

- 32" Fan can spin to 2800 RPM within seconds for quick operator response
- 150 Horsepower Self-clearing fan
- Boom, hose, and blower all swing out after removal of jack bolt and four restraint bolts, quicker service
- Inspection door with engine interlock.
- Back plate protects bearings and shaft
- Fans are robotically welded, stress relieved and statically and dynamically balanced
- AR400 material



GETTING MORE DONE™, Efficiently!



SPECIFICATIONS: DCL1000SE

Boom/Hose

- 3-axis, in-cab motion control
- Clearly-Safe™ 62"+, Mailbox avoidable design
- Hydraulic powered 12V system
- 16"x120" HD flexible rubber hose w/steel nozzle
- Option: Urethane vacuum hose w/steel nozzle

VALUE-ADD HIGHLIGHTS

- Single Engine Power Chassis and Collection system w/Variable Power Divider (VPD)
 - ✓ Lower Emissions
 - ✓ Lower Fuel & Maintenance Costs
 - ✓ Only 14 vs 36 Engine Maintenance Points
- 150 Horsepower at the 32" Fan
 - ✓ Unsurpassed Suction and Collection Capability
- Single-Person Operation
 - ✓ Reduced Labor Costs
- In-Cabin Controls
 - ✓ Optimal Safety
- 3-axis, Proportional Control
 - ✓ Smooth Operation
- 5000 LBS lighter
 - ✓ Greater Payload
- In-Box, Lowest Exit Bottom Exhaust Standard
 - ✓ Minimal Dust Cloud Dispersion & Visibility
- 102" Narrow
 - ✓ Very Maneuverable
- Patented ECO-MODE™
 - ✓ Reduced Fuel Consumption
- Chipper Door & Hitch
 - ✓ Additional Functionality

ECO-MODE™