

# HOIST COMPARISON

CHAMPION TO HARSH

Last Updated: DATE

Column1	Column2	Column3	Column4	Column5
CHAMPION	CS-415	4" CYL 15" STROKE 2" DIA	CLASS B	8' -10'
HARSH	B-10	5" CYL 15" STROKE 1-3/4" DIA	CLASS B	8'-12'
CHAMPION	CS515	5" CYL 15" STROKE 2" DIA	CLASS C	8'-12'
HARSH	C-20	5" CYL 19" STROKE 1-3/4" DIA	CLASS C	8'-13'
CHAMPION	CS615	6" CYL 15" STROKE 2" DIA	CLASS D	9"-12"
HARSH	D-40	5-1/2" CYL 21" STROKE 3-3/4" DIA	CLASS D	9.5'-15'
CHAMPION	CS615 HD	6" CYL 15" STROKE 2" DIA	CLASS C	9'-14'
HARSH	C-20	5" CYL 19" STROKE 1-3/4" DIA	CLASS C	8'-13'
CHAMPION	CS620HD	6" CYL 20" STROKE 2"DIA	CLASS D	12'-16'
HARSH	D-40	5-1/2" CYL 21" STROKE 3-3/4" DIA	CLASS D	9.5'-15'
CHAMPION	CS6615	(2) 6" CYL 15" STROKE 2" DIA	CLASS E	12'-15'
HARSH	E-50	(2) CYL 2 STAGE	CLASS E	14'-18'
HARSH	E-55	6" CYL 23" STROKE 2-1/2" DIA	CLASS E	14'-18'
CHAMPION	CS6620	(2) 6" CYL 20" STROKE 2" DIA	CLASS G	12'-20'
HARSH	F-60	(2) CYL 2 STAGE	CLASS F	14'-18'
CHAMPION	CS628	6" CYL 28" STROKE 2" DIA	CLASS E	10'-18
CHAMPION	CS5530	(2) 5" CYL 30" STROKE 2-1/2" DIA	CLASS G	12'-20'

## HARSH HOTLINE

IF YOU CANNOT FIND THE EXACT SPECIFICATIONS TO MATCH YOUR APPLICATION, CALL 800-227-1702.

WE WILL RUN YOUR SPECS THROUGH OUR EXCLUSIVE **H.A.P.** (HARSH APPLICATION PROGRAM).

EMAIL: [harsh@harshenviro.com](mailto:harsh@harshenviro.com)  
WEB: [www.harshenviro.com](http://www.harshenviro.com)

THE BEST TIPPING GEAR EVER,

### RL-A05 CAPACITY IN TONS

BOX LENGTH (FEET)	CAB TO AXLE (INCHES)	OVER-HANG * (INCHES)	DUMP ANGLE					
			MOUNTING LENGTH					
			40°	45°	50°	55°	51"	38"
8	60	6	2.5	2.2	2.0	1.8		
9	60	18	2.9	2.5	2.3	2.1		
	72	6	2.2	1.9	1.7	1.6		
9.5	60	24	3.2	2.8	2.5	2.3		
	72	12	2.3	2.0	1.8	1.7		
10	60	30	3.5	3.1	2.3	2.6		
	72	18	2.5	2.2	1.7	1.8		
	84	6	1.9	1.7	1.5	1.4		
11	72	30	2.9	2.5	2.4	2.1		
	84	18	2.2	1.9	1.7	1.6		
12	84	30	2.5	2.2	2.0	1.8		

### RL-C20 CAPACITY IN TONS

BOX LENGTH (FEET)	CAB TO AXLE (INCHES)	OVER-HANG * (INCHES)	DUMP ANGLE					
			MOUNTING LENGTH					
			40°	45°	50°	55°	61"	67"
8	60	6	11.0	9.8	8.9	8.1		
9	60	18	12.9	11.5	10.4	9.4		
	72	6	9.6	8.6	7.8	7.1		
9.5	60	24	14.1	12.5	11.3	10.3		
	72	12	10.3	9.2	8.3	7.5		
10	60	30	15.5	13.8	12.5	11.3		
	72	18	11.0	9.8	8.9	8.1		
	84	6	8.6	7.6	6.9	6.3		
11	72	30	12.9	11.5	10.4	9.4		
	84	18	9.6	8.6	7.8	7.1		
12	84	30	11.0	9.8	8.9	8.1		
	102	12	7.7	6.9	6.2	5.6		
13	102	24	8.6	7.6	6.9	6.3		

THE BEST TIPPING GEAR EVER,  
MADE EVEN BETTER!

To back up the best warranty in the industry, HARSH® has subjected each Rigid Lift® Main Frame design to a tough 20,000 cycle test. 2/3 of this test simulated maximum off center load conditions. The Rigid Lift® performed without main frame failure and very little wear to moving parts.

Many years of customer use and testing in the field is positive proof of excellence and durability of the HARSH® Rigid Lift® Tipping gear.

# RL-A05, RL-B10, RL-C20

DOUBLE ACTING

*The First . . .*

*. . . And Still the Best*

### RL-B10

### CAPACITY IN TONS

BOX LENGTH (FEET)	CAB TO AXLE (INCHES)	OVER-HANG * (INCHES)	DUMP ANGLE					
			MOUNTING LENGTH					
			40°	45°	50°	55°	51"	61"
8	60	6	8.6	7.5	6.8	6.3		
9	60	18	10.0	8.8	7.9	7.4		
	72	6	7.5	6.6	5.9	5.5		
9.5	60	24	10.9	9.6	8.7	8.0		
	72	12	8.0	7.0	6.3	5.9		
10	60	30	12.0	10.6	9.5	8.8		
	72	18	8.6	7.5	6.8	6.3		
	84	6	6.6	5.9	5.3	4.9		
11	72	30	10.0	8.8	7.9	7.4		
	84	18	7.5	6.6	5.9	5.5		
12	84	30	8.6	7.5	6.8	6.3		

NOTE: CAPACITY IN TONS AT 2500 PSI (172 bar)

(1) Overhang based on 32" from center line of tail hinge pin to center line of truck axle with 2" clearance between cab and box.

(2) These capacities are for the body and payload together with an evenly distributed, non-diminishing, solid load for the full dump cycle. The center of gravity of the load is assumed to be at the center of the body.

SPECIFICATIONS SUBJECT TO CHANGE WITHOUT NOTICE

### NOW AVAILABLE

Sub-frames for RL-B10 and RL-C20. Includes mounts and tail hinge.

**SOLD WITH HOIST ONLY**

*7 Year Limited  
Frame Warranty*

**HARSH**  
Tipping Gear



HARSH INTERNATIONAL, INC. 600 Oak Ave., Eaton, CO 80615  
TEL 970-454-2291 800-227-1702 FAX 970-454-3491  
web: [harshenviro.com](http://harshenviro.com) email: [harsh@harshenviro.com](mailto:harsh@harshenviro.com)



## HARSH HOTLINE

IF YOU CANNOT FIND THE EXACT SPECIFICATIONS TO MATCH YOUR APPLICATION, CALL 800-227-1702.

WE WILL RUN YOUR SPECS THROUGH OUR EXCLUSIVE **H.A.P.** (HARSH APPLICATION PROGRAM).

EMAIL: [harsh@harshenviro.com](mailto:harsh@harshenviro.com)  
WEB: [www.harshenviro.com](http://www.harshenviro.com)

THE BEST TIPPING GEAR EVER,  
MADE EVEN BETTER

To back up the best warranty in the industry, HARSH has subjected each Rigid Lift Main Frame design to a tough 20,000 cycle test (2/3 of this test simulated maximum off-center load conditions). The Rigid Lift performed without main frame failure and very little wear to moving parts.

Many years of customer use and testing in the field is positive proof of excellence and durability of the HARSH Rigid Lift Tipping Gear.

- 7 year limited warranty\*
- World wide recognition
- Industry leader for over 50 years
- Built and tested to last longer
- Featuring dynamic stability
- Minimal weight
- High polished hard chrome cylinders
- Fast tipping cycle
- 3300 PSI operating pressure (228 bar)
- Ease of maintenance
- Classified for both dump body (NTEA Class 40) and conversion hoist (NTEA Class D) use.

# RL-D40

## DOUBLE ACTING

*The First . . .*

*. . . And Still the Best*

BOX LENGTH (FEET)	CAB TO AXLE (INCHES)	OVER-HANG * (INCHES)	CAPACITY IN TONS			
			DUMP ANGLE		MOUNTING LENGTH	
			40° 102"	45° 91"	50° 82"	55° 75"
9.5	84	0	12.8	11.4	10.3	9.4
10	84	6	13.5	12.0	10.8	9.9
12	81 102	30 12	17.4 12.2	15.5 10.8	13.9 9.7	12.7 8.9
13	102 108	24 18	13.5 12.2	12.0 10.8	10.8 9.7	9.9 8.9
14	102 108 114	36 30 24	15.2 13.5 12.2	13.5 12.0 10.8	12.2 10.8 9.7	11.1 9.9 8.9
15	114 120	36 30	13.5 12.2	12.0 10.8	10.8 9.7	9.9 8.9

### NOTE: CAPACITY IN TONS AT 3300 PSI (228 BAR)

(1) Overhang based on 32" from center line of tail hinge pin to center line of truck axle with 2" clearance between cab and box.

(2) These capacities are for the body and payload together with an evenly distributed, non-diminishing, solid load for the full dump cycle. The center of gravity of the load is assumed to be at the center of the body.

SPECIFICATIONS SUBJECT TO CHANGE WITHOUT NOTICE

*7 Year Limited  
Frame Warranty*

**HARSH**  
Tipping Gear



**HARSH INTERNATIONAL, INC.** 600 Oak Ave., Eaton, CO 80615  
TEL 970-454-2291 800-227-1702 FAX 970-454-3491  
web: [harshenviro.com](http://harshenviro.com) email: [harsh@harshenviro.com](mailto:harsh@harshenviro.com)

## HARSH HOTLINE

IF YOU CANNOT FIND THE EXACT SPECIFICATIONS TO MATCH YOUR APPLICATION, CALL 800-227-1702.

WE WILL RUN YOUR SPECS THROUGH OUR EXCLUSIVE H.A.P. (HARSH APPLICATION PROGRAM).

EMAIL: [harsh@harshenviro.com](mailto:harsh@harshenviro.com)

WEB: [www.harshenviro.com](http://www.harshenviro.com)

THE BEST TIPPING GEAR EVER,  
MADE EVEN BETTER

To back up the best warranty in the industry, HARSH has subjected each Rigid Lift Main Frame design to a tough 20,000 cycle test (2/3 of this test simulated maximum off-center load conditions). The Rigid Lift performed without main frame failure and very little wear to moving parts.

Many years of customer use and testing in the field is positive proof of excellence and durability of the HARSH Rigid Lift Tipping Gear.

- 7 year limited warranty\*
- World wide recognition
- Industry leader for over 50 years
- Built and tested to last longer
- Featuring dynamic stability
- Minimal weight
- High polished hard chrome cylinders
- Fast tipping cycle
- 3300 PSI operating pressure (228 bar)
- Ease of maintenance
- Classified for both dump body (NTEA Class 50) and conversion hoist (NTEA Class E) use.

# RL-E50

## DOUBLE ACTING

*The First . . .*

*. . . And Still the Best*

BOX LENGTH (FEET)	CAB TO AXLE (INCHES)	OVER-HANG * (INCHES)	CAPACITY IN TONS			
			DUMP ANGLE		MOUNTING LENGTH	
			40°	45°	50°	55°
14	102	36	103"	92"	83"	76"
	108	30	20.3	19.1	17.8	16.3
	114	24	17.5	16.3	15.5	14.5
	120	18	15.3	14.3	13.5	12.9
16	126	36	13.6	12.7	11.9	11.4
	132	30	15.3	14.3	13.5	12.9
	144	18	13.6	12.7	11.9	11.4
	150	12	11.2	10.3	9.7	9.2
18	150	36	10.3	9.5	8.8	8.4
	156	30	12.3	11.4	10.7	10.2
	168	18	11.2	10.3	9.7	9.2
	174	12	9.5	8.7	8.1	7.7

DUMP BODY APPLICATIONS						
8	6	-	-	20.4	18.6	
	12	-	-	23.8	21.8	
10	6	-	-	15.5	14.5	
	12	-	-	17.8	16.3	

### NOTE: CAPACITY IN TONS AT 3300 PSI (228 BAR)

(1) Overhang based on 32" from center line of tail hinge pin to center line of truck axle with 2" clearance between cab and box.

(2) These capacities are for the body and payload together with an evenly distributed, non-diminishing, solid load for the full dump cycle. The center of gravity of the load is assumed to be at the center of the body.

SPECIFICATIONS SUBJECT TO CHANGE WITHOUT NOTICE

*7 Year Limited  
Frame Warranty*

**HARSH**  
Tipping Gear



HARSH INTERNATIONAL, INC. 600 Oak Ave., Eaton, CO 80615  
TEL 970-454-2291 800-227-1702 FAX 970-454-3491  
web: [harshenviro.com](http://harshenviro.com) email: [harsh@harshenviro.com](mailto:harsh@harshenviro.com)



## HARSH HOTLINE

IF YOU CANNOT FIND THE EXACT SPECIFICATIONS TO MATCH YOUR APPLICATION, CALL 800-227-1702.

WE WILL RUN YOUR SPECS THROUGH OUR EXCLUSIVE **H.A.P.** (HARSH APPLICATION PROGRAM) AND SEND YOU A COMPUTER PRINTOUT VIA FAX OR EMAIL.

EMAIL: [harsh@harshenviro.com](mailto:harsh@harshenviro.com)  
WEB: [www.harshenviro.com](http://www.harshenviro.com)

THE BEST TIPPING GEAR EVER,  
MADE EVEN BETTER

To back up the best warranty in the industry, HARSH has subjected each Rigid Lift Main Frame design to a tough 20,000 cycle test (2/3 of this test simulated maximum off-center load conditions). The Rigid Lift performed without main frame failure and very little wear to moving parts.

Many years of customer use and testing in the field is positive proof of excellence and durability of the HARSH Rigid Lift Tipping Gear.

Many years of customer use and testing in the field is positive proof of excellence and durability of the HARSH Rigid Lift Tipping gear.

- 7 year limited warranty\*
- World wide recognition
- Industry leader for over 50 years
- Built and tested to last longer
- Featuring dynamic stability
- Minimal weight
- High polished hard chrome cylinders
- Fast tipping cycle
- 3300 PSI operating pressure (228 bar)
- Ease of maintenance
- Classified for both dump body (NTEA Class 50) and conversion hoist (NTEA Class E) use.

# RL-E55

**DOUBLE ACTING**

*The First . . .*

*. . . And Still the Best*

BOX LENGTH (FEET)	CAB TO TRUNNION (INCHES)	OVER-HANG * (INCHES)	CAPACITY IN TONS					
			DUMP ANGLE		MOUNTING LENGTH			
			40°	45°	50°	55°	60°	65°
14	102	36	112"	100"	91"	83"		
	108	30	23.7	21.2	19.3	17.6		
	114	24	21.1	18.8	17.1	15.6		
	120	18	19.0	16.9	15.4	14.0		
16	126	36	17.2	15.4	14.0	12.8		
	132	30	19.0	16.9	15.4	14.0		
	144	18	17.2	15.4	14.0	12.8		
	150	12	14.6	13.0	11.8	10.8		
18	150	36	13.5	12.1	11.0	10.0		
	156	30	15.8	14.1	12.8	11.7		
	168	18	14.6	13.0	11.8	10.8		
	174	12	12.6	11.3	10.3	9.3		

DUMP BODY APPLICATIONS						
10	6	-	-	17.1	15.6	
	12	-	-	19.3	17.6	
12	6	-	-	14.0	12.8	
	12	-	-	15.4	14.0	

### NOTE: CAPACITY IN TONS AT 3300 PSI (228 BAR)

- (1) Overhang based on 32" from center line of tail hinge pin to center line of truck axle trucks, with 2" clearance between cab and box.
- (2) These capacities are for the body and payload together with an evenly distributed, non-diminishing, solid load for the full dump cycle. The center of gravity of the load is assumed to be at the center of the body.

SPECIFICATIONS SUBJECT TO CHANGE WITHOUT NOTICE

*7 Year Limited  
Frame Warranty*

**HARSH**  
**Tipping Gear**



**HARSH INTERNATIONAL, INC.** 600 Oak Ave., Eaton, CO 80615  
TEL 970-454-2291 800-227-1702 FAX 970-454-3491  
web: [harshenviro.com](http://harshenviro.com) email: [harsh@harshenviro.com](mailto:harsh@harshenviro.com)

## HARSH HOTLINE

IF YOU CANNOT FIND THE EXACT SPECIFICATIONS TO MATCH YOUR APPLICATION, CALL 800-227-1702.

WE WILL RUN YOUR SPECS THROUGH OUR EXCLUSIVE **H.A.P.** (HARSH APPLICATION PROGRAM) AND SEND YOU A COMPUTER PRINTOUT VIA FAX OR EMAIL.

EMAIL: [harsh@harshenviro.com](mailto:harsh@harshenviro.com)  
WEB: [www.harshenviro.com](http://www.harshenviro.com)

**THE BEST TIPPING GEAR EVER,  
MADE EVEN BETTER**

To back up the best warranty in the industry, HARSH has subjected each Rigid Lift Main Frame design to a tough 20,000 cycle test (2/3 of this test simulated maximum off-center load conditions). The Rigid Lift performed without main frame failure and very little wear to moving parts.

Many years of customer use and testing in the field is positive proof of excellence and durability of the HARSH Rigid Lift Tipping gear.

- 7 year limited warranty\*
- World wide recognition
- Industry leader for over 50 years
- Built and tested to last longer
- Featuring dynamic stability
- Minimal weight
- High polished hard chrome cylinders
- Fast tipping cycle
- 3300 PSI operating pressure (228 bar)
- Ease of maintenance
- Classified for both dump body (NTEA Class 80) and conversion hoist (NTEA Class H) use.

*From Honebeck Hydraulic*

# RL-F60

**DOUBLE ACTING**

*The First . . .*

*. . . And Still the Best*

BOX LENGTH (FEET)	CAB TO TRUNNION (INCHES)	OVER-HANG * (INCHES)	CAPACITY IN TONS			
			DUMP ANGLE		MOUNTING LENGTH	
			40°	45°	50°	55°
14	102	36	114"	102"	92"	84"
	108	30	21.8	25.1	22.6	20.6
	114	24	25.0	22.3	20.1	18.3
	120	18	22.5	20.1	18.0	16.4
16	126	36	20.4	18.2	15.0	14.9
	132	30	22.5	20.1	18.0	16.4
	144	18	20.4	18.2	16.4	14.9
	150	12	17.3	15.4	13.9	12.6
18	150	36	16.0	14.3	12.9	11.7
	156	30	18.7	16.7	15.0	13.7
	168	18	17.3	15.4	13.9	12.6
	174	12	15.0	13.4	12.0	10.9

DUMP BODY APPLICATIONS						
10	6	-	-	20.1	18.3	
	12	-	-	22.6	20.6	
12	6	-	-	16.4	14.9	
	12	-	-	18.0	16.4	

### NOTE: CAPACITY IN TONS AT 3300 PSI (228 BAR)

- (1) Overhang based on 32" from center line of tail hinge pin to center line of truck axle with 2" clearance between cab and box.
- (2) These capacities are for the body and payload together with an evenly distributed, non-diminishing, solid load for the full dump cycle. The center of gravity of the load is assumed to be at the center of the body.

SPECIFICATIONS SUBJECT TO CHANGE WITHOUT NOTICE

*7 Year Limited  
Frame Warranty*

**HARSH**  
**Tipping Gear**



**HARSH INTERNATIONAL, INC.** 600 Oak Ave., Eaton, CO 80615  
TEL 970-454-2291 800-227-1702 FAX 970-454-3491  
web: [harshenviro.com](http://harshenviro.com) email: [harsh@harshenviro.com](mailto:harsh@harshenviro.com)



## HARSH HOTLINE

IF YOU CANNOT FIND THE EXACT SPECIFICATIONS TO MATCH YOUR APPLICATION, CALL 800-227-1702.

WE WILL RUN YOUR SPECS THROUGH OUR EXCLUSIVE **H.A.P.** (HARSH APPLICATION PROGRAM) AND SEND YOU A COMPUTER PRINTOUT VIA FAX OR EMAIL.

EMAIL: [harsh@harshenviro.com](mailto:harsh@harshenviro.com)  
WEB: [www.harshenviro.com](http://www.harshenviro.com)

**THE BEST TIPPING GEAR EVER,  
MADE EVEN BETTER**

To back up the best warranty in the industry, HARSH has subjected each Rigid Lift Main Frame design to a tough 20,000 cycle test (2/3 of this test simulated maximum off-center load conditions). The Rigid Lift performed without main frame failure and very little wear to moving parts.

Many years of customer use and testing in the field is positive proof of excellence and durability of the HARSH Rigid Lift Tipping Gear.

- 7 year limited warranty\*
- World wide recognition
- Industry leader for over 50 years
- Built and tested to last longer
- Featuring dynamic stability
- Minimal weight
- High polished hard chrome cylinders
- Fast tipping cycle
- 3300 PSI operating pressure (228 bar)
- Ease of maintenance
- Classified for both dump body (NTEA Class 70) and conversion hoist (NTEA Class G) use.

# RL-G70

**DOUBLE ACTING**

*The First . . .*

*. . . And Still the Best*

BOX LENGTH (FEET)	CAB TO AXLE (INCHES)	CAB TO TRUNNION (INCHES)	OVER-HANG * (INCHES)	CAPACITY IN TONS			
				DUMP ANGLE		MOUNTING LENGTH	
				40°	45°	50°	55°
				129"	115"	104"	95"
16	132	120	30	26.0	23.2	21.0	19.1
	138	126	24	23.9	21.3	19.2	17.5
	144	132	18	22.0	19.6	17.7	16.2
18	150	138	36	23.9	21.3	19.2	17.5
	156	144	30	22.0	19.6	17.7	16.2
	162	150	24	20.5	18.2	16.5	15.0
20	174	162	36	20.5	18.2	16.5	15.0
	-	168	30	19.1	17.0	15.4	14.0
	-	162	24	20.5	18.2	16.5	15.0
	-	180	18	16.8	15.0	13.6	12.4
<b>DUMP BODY APPLICATIONS</b>							
10			6	-	-	25.6	23.4
			12	-	-	28.9	26.3
12			6	-	-	21.0	19.1
			12	-	-	23.1	21.1

### NOTE: CAPACITY IN TONS AT 3300 PSI (228 BAR)

(1) Overhang based on 32" from center line of tail hinge pin to center line of truck axle on single axle trucks, and 44" from center line of tail hinge pin to center line of trunnion on tandem axle trucks, with 2" clearance between cab and box.

(2) These capacities are for the body and payload together with an evenly distributed, non-diminishing, solid load for the full dump cycle. The center of gravity of the load is assumed to be at the center of the body.

SPECIFICATIONS SUBJECT TO CHANGE WITHOUT NOTICE

*7 Year Limited  
Frame Warranty*

**HARSH**  
**Tipping Gear**



**HARSH INTERNATIONAL, INC.** 600 Oak Ave., Eaton, CO 80615  
TEL 970-454-2291 800-227-1702 FAX 970-454-3491  
web: [harshenviro.com](http://harshenviro.com) email: [harsh@harshenviro.com](mailto:harsh@harshenviro.com)

## HARSH HOTLINE

IF YOU CANNOT FIND THE EXACT SPECIFICATIONS TO MATCH YOUR APPLICATION, CALL 800-227-1702.

WE WILL RUN YOUR SPECS THROUGH OUR EXCLUSIVE **H.A.P.** (HARSH APPLICATION PROGRAM) AND SEND YOU A COMPUTER PRINTOUT VIA FAX OR EMAIL.

EMAIL: [harsh@harshenviro.com](mailto:harsh@harshenviro.com)  
WEB: [www.harshenviro.com](http://www.harshenviro.com)

THE BEST TIPPING GEAR EVER,  
MADE EVEN BETTER

To back up the best warranty in the industry, HARSH has subjected each Rigid Lift Main Frame design to a tough 20,000 cycle test (2/3 of this test simulated maximum off-center load conditions). The Rigid Lift performed without main frame failure and very little wear to moving parts.

Many years of customer use and testing in the field is positive proof of excellence and durability of the HARSH Rigid Lift Tipping gear.

- 7 year limited warranty\*
- World wide recognition
- Industry leader for over 50 years
- Built and tested to last longer
- Featuring dynamic stability
- Minimal weight
- High polished hard chrome cylinders
- Fast tipping cycle
- 3300 PSI operating pressure (228 bar)
- Ease of maintenance
- Classified for both dump body (NTEA Class 80) and conversion hoist (NTEA Class H) use.

# RL-H80

## DOUBLE ACTING

*The First . . .*

*. . . And Still the Best*

BOX LENGTH (FEET)	CAB TO TRUNNION (INCHES)	OVER-HANG * (INCHES)	CAPACITY IN TONS					
			DUMP ANGLE		MOUNTING LENGTH			
			40°	45°	50°	55°	95°	
18	138	36	29.3	26.1	23.6	21.5		
	144	30	27.0	24.1	21.8	19.9		
	150	24	25.1	22.3	20.2	18.4		
20	162	36	25.1	22.3	20.2	18.4		
	168	30	23.4	20.9	18.8	17.2		
	174	24	21.9	19.5	17.7	16.1		
22	186	36	21.9	19.5	17.7	16.1		
	192	30	20.7	18.4	16.6	15.2		
	198	24	19.5	17.4	15.7	14.3		

DUMP BODY APPLICATIONS						
10		6	-	-	31.4	28.7
		12	-	-	35.4	32.3
12		6	-	-	25.7	23.3
		12	-	-	28.3	25.8

### NOTE: CAPACITY IN TONS AT 3300 PSI (228 BAR)

(1) Overhang based on 32" from center line of tail hinge pin to center line of truck axle on single axle trucks, and 44" from center line of tail hinge pin to center line of trunnion on tandem axle trucks with 2" clearance between cab and box.

(2) These capacities are for the body and payload together with an evenly distributed, non-diminishing, solid load for the full dump cycle. The center of gravity of the load is assumed to be at the center of the body.

SPECIFICATIONS SUBJECT TO CHANGE WITHOUT NOTICE

*7 Year Limited  
Frame Warranty*

**HARSH**  
Tipping Gear



HARSH INTERNATIONAL, INC. 600 Oak Ave., Eaton, CO 80615  
TEL 970-454-2291 800-227-1702 FAX 970-454-3491  
web: [harshenviro.com](http://harshenviro.com) email: [harsh@harshenviro.com](mailto:harsh@harshenviro.com)



## HARSH HOTLINE

IF YOU CANNOT FIND THE EXACT SPECIFICATIONS TO MATCH YOUR APPLICATION, CALL 800-227-1702.

WE WILL RUN YOUR SPECS THROUGH OUR EXCLUSIVE **H.A.P.** (HARSH APPLICATION PROGRAM).

EMAIL: [harsh@harshenviro.com](mailto:harsh@harshenviro.com)  
WEB: [www.harshenviro.com](http://www.harshenviro.com)

THE BEST TIPPING GEAR EVER,  
MADE EVEN BETTER

To back up the best warranty in the industry, HARSH has subjected each Rigid Lift Main Frame design to a tough 20,000 cycle test (2/3 of this test simulated maximum off-center load conditions). The Rigid Lift performed without main frame failure and very little wear to moving parts.

Many years of customer use and testing in the field is positive proof of excellence and durability of the HARSH Rigid Lift Tipping gear.

- 7 year limited warranty\*
- World wide recognition
- Industry leader for over 50 years
- Built and tested to last longer
- Featuring dynamic stability
- Minimal weight
- High polished hard chrome cylinders
- Fast tipping cycle
- 3100 PSI operating pressure (214 bar)
- Ease of maintenance
- Classified for both dump body (NTEA Class 100) and conversion hoist (NTEA Class J) use.

# RL-J100

## SINGLE ACTING

*The First . . .*

*. . . And Still the Best*

CAPACITY IN TONS

BOX LENGTH (FEET)	CAB TO TRUNNION (INCHES)	OVER-HANG * (INCHES)	DUMP ANGLE			
			MOUNTING LENGTH			
			40°	45°	50°	55°
18	138	36	148"	132"	119"	109"
	150	24	38.3	34.1	30.7	28.0
	156	18	32.8	29.2	26.3	24.0
20	162	36	30.7	27.3	24.5	22.4
	174	24	32.8	29.2	26.3	24.0
	180	18	28.7	25.6	23.0	21.0
22	186	36	27.0	24.1	21.6	19.8
	198	24	28.7	25.6	23.0	21.0
	204	18	25.5	22.7	20.4	18.7
24	210	36	24.2	21.5	19.4	17.7
	222	24	25.5	22.7	20.4	18.7
	228	18	23.0	20.4	18.4	16.8
			21.9	19.5	17.5	16.0

DUMP BODY APPLICATIONS

12	6	-	-	33.5	30.6
	12	-	-	36.8	33.7
14	6	-	-	28.3	25.9
	12	-	-	30.7	28.0
16	6	-	-	24.5	22.4
	12	-	-	26.3	24.0

### NOTE: CAPACITY IN TONS AT 3100 PSI (214 BAR)

(1) Overhang based on 44" from center line of tail hinge pin to center line of trunnion on tandem axle trucks, with 2" clearance between cab and box.

(2) These capacities are for the body and payload together with an evenly distributed, non-diminishing, solid load for the full dump cycle. The center of gravity of the load is assumed to be at the center of the body.

SPECIFICATIONS SUBJECT TO CHANGE WITHOUT NOTICE

*7 Year Limited  
Frame Warranty*

**HARSH**  
**Tipping Gear**



HARSH INTERNATIONAL, INC. 600 Oak Ave., Eaton, CO 80615  
TEL 970-454-2291 800-227-1702 FAX 970-454-3491  
web: [harshenviro.com](http://harshenviro.com) email: [harsh@harshenviro.com](mailto:harsh@harshenviro.com)

## HARSH HOTLINE

IF YOU CANNOT FIND THE EXACT SPECIFICATIONS TO MATCH YOUR APPLICATION, CALL 800-227-1702.

WE WILL RUN YOUR SPECS THROUGH OUR EXCLUSIVE H.A.P. (HARSH APPLICATION PROGRAM).

EMAIL: [harsh@harshenviro.com](mailto:harsh@harshenviro.com)  
WEB: [www.harshenviro.com](http://www.harshenviro.com)

THE BEST TIPPING GEAR EVER,  
MADE EVEN BETTER

To back up the best warranty in the industry, HARSH has subjected each Rigid Lift Main Frame design to a tough 20,000 cycle test (2/3 of this test simulated maximum off-center load conditions). The Rigid Lift performed without main frame failure and very little wear to moving parts.

Many years of customer use and testing in the field is positive proof of excellence and durability of the HARSH Rigid Lift Tipping Gear.

- 7 year limited warranty
- World wide recognition
- Industry leader for over 40 years.
- Built and tested to last longer.
- Featuring dynamic stability.
- Minimal weight.
- High polished chrome cylinders
- Fast tipping cycle
- 3100 PSI operating pressure (214 bar)
- Ease of maintenance
- Classified for both dump body (NTEA Class 110) and conversion hoist (NTEA Class K) use.

# RL-K110

## SINGLE ACTING

*The First . . .*

*. . . And Still the Best*

CAPACITY IN TONS

BOX LENGTH (FEET)	CAB TO TRUNNION (INCHES)	OVER-HANG * (INCHES)	DUMP ANGLE			
			MOUNTING LENGTH			
			40° 200"	45° 178"	50° 161"	55° 148"
22	186	36	36.1	32.7	29.6	27.2
	198	24	30.8	29.1	26.3	24.1
	204	18	28.7	27.6	24.9	22.9
24	210	36	30.8	29.1	26.3	24.1
	222	24	26.8	26.2	23.7	21.7
	228	18	25.1	24.6	22.5	20.7
26	234	36	26.8	26.2	23.7	21.7
	246	24	23.6	23.2	21.5	19.7

### DUMP BODY APPLICATIONS

16	-	6	-	-	31.6	29.0
	-	12	-	-	33.8	31.0
18	-	6	-	-	27.8	25.6
	-	12	-	-	29.6	27.2

**NOTE: CAPACITY IN TONS AT 3100 PSI (214 bar)**

(1) Overhang based on 44" from center line of tail hinge pin to center line of trunnion on tandem axle trucks, with 2" clearance between cab and box.

(2) These capacities are for the body and payload together with an evenly distributed, nondiminishing, solid load for the full dump cycle. The center of gravity of the load is assumed to be at the center of the body.

**SPECIFICATIONS SUBJECT TO CHANGE WITHOUT NOTICE.**

*7 Year Limited  
Frame Warranty*

**HARSH**  
**Tipping Gear**



**HARSH INTERNATIONAL, INC.** 600 Oak Ave., Eaton, CO 80615  
TEL 970-454-2291 800-227-1702 FAX 970-454-3491  
web: [harshenviro.com](http://harshenviro.com) email: [harsh@harshenviro.com](mailto:harsh@harshenviro.com)



## HARSH HOTLINE

IF YOU CANNOT FIND THE EXACT SPECIFICATIONS TO MATCH YOUR APPLICATION, CALL 800-227-1702.

WE WILL RUN YOUR SPECS THROUGH OUR EXCLUSIVE H.A.P. (HARSH APPLICATION PROGRAM).

EMAIL: [harsh@harshenviro.com](mailto:harsh@harshenviro.com)  
WEB: [www.harshenviro.com](http://www.harshenviro.com)

THE BEST TIPPING GEAR EVER,  
MADE EVEN BETTER

To back up the best warranty in the industry, HARSH has subjected each Rigid Lift Main Frame design to a tough 20,000 cycle test (2/3 of this test simulated maximum off-center load conditions). The Rigid Lift performed without main frame failure and very little wear to moving parts.

Many years of customer use and testing in the field is positive proof of excellence and durability of the HARSH Rigid Lift Tipping Gear.

- 7 year limited warranty
- World wide recognition
- Industry leader for over 60 years
- Built and tested to last longer
- Featuring dynamic stability
- Minimal weight
- High polished hard chrome cylinders
- Fast tipping cycle
- 3100 PSI operating pressure (214 bar)
- Ease of maintenance
- Classified as:  
NTEA Class 120 dump body hoist  
NTEA Class L conversion hoist.

*7 Year Limited  
Frame Warranty*

# RL-L125

## SINGLE ACTING

TWO FRAME CONFIGURATIONS AVAILABLE:

★ TRUCK MOUNT ★ TRAILER MOUNT ★

BOX LENGTH (FEET)	OVER-HANG * (INCHES)	DUMP ANGLE			
		40°	45°	50°	55°
		231"	207"	187"	171"
26	36	54.1	48.4	43.7	39.9
	24	49.1	44.0	39.7	36.3
	18	47.0	42.1	38.0	31.9
28	36	49.1	44.0	39.7	36.3
	24	45.0	40.3	36.4	33.2
	18	43.2	38.7	34.9	31.9
32	18	37.3	33.4	30.10	27.5

### DUMP BODY APPLICATIONS

17	6			54.6	49.9
	12			58.3	53.2
18	6			51.4	47.0
	12			54.6	49.9

### NOTE: CAPACITY IN TONS AT 3100 PSI (214 BAR)

- (1) Overhang based on 44" from center line of tail hinge pin to center line of truck trunion with 2" clearance between cab and box.
- (2) These capacities are for the body and payload together with an evenly distributed, non-diminishing, solid load for the full dump cycle. The center of gravity of the load is assumed to be at the center of the body.

SPECIFICATIONS SUBJECT TO CHANGE WITHOUT NOTICE



# HARSH

## Tipping Gear



HARSH INTERNATIONAL, INC. 600 Oak Ave., Eaton, CO 80615  
TEL 970-454-2291 800-227-1702 FAX 970-454-3491



# RL-M130

SINGLE ACTING

## HARSH HOTLINE

IF YOU CANNOT FIND THE EXACT SPECIFICATIONS THAT MATCH YOUR APPLICATION, JUST CALL **1-800-227-1702** AND WE WILL RUN YOUR SPEC'S THROUGH OUR **EXCLUSIVE H.A.P.** (HARSH APPLICATION PROGRAM) AND FAX YOU A COMPUTER PRINTOUT.

### THE BEST TIPPING GEAR EVER, MADE EVEN BETTER!

To back-up the best warranty in the industry, HARSH® has subjected each Rigid Lift® Main Frame design to a tough 20,000 cycle test (1/3 of this test simulated maximum off center load conditions). The Rigid Lift® performed without main frame failure and very little wear to moving parts.

Many years of customer use and testing in the field is positive proof of excellence and durability of the HARSH® Rigid Lift® Tipping gear.

- 7 year limited warranty\*
- World wide recognition
- Industry leader for over 40 years
- Built and tested to last longer
- Featuring dynamic stability
- Minimal weight
- High polished hard chrome cylinders
- Fast Tipping cycle
- 3100 PSI operating pressure (228 bar)
- Ease of maintenance
- Classified for both dump body (NTEA Class 120) and conversion hoist (NTEA Class L) use.

\*See our Harsh® Rigid Lift® Hoist 7 year limited warranty for details.

CAPACITY IN TONS

BOX LENGTH (FEET)	OVER-HANG (INCHES)	DUMP ANGLE			
		MOUNTING LENGTH			
		40° 231"	45° 207"	50° 187"	55° 171"
26	36	44.6	42.3	40.9	38.3
	24	39.8	37.6	36.2	34.8
	18	37.8	35.7	34.3	33.3
28	36	39.8	37.6	36.2	34.8
	24	36.0	33.9	32.5	31.8
	18	34.3	32.3	30.9	30.2

DUMP BODY APPLICATIONS

17	6	-	-	52.4	47.9
	12	-	-	55.9	51.1
18	6	-	-	49.3	45.1
47.9		12	-	-	52.4

#### NOTE: CAPACITY IN TONS AT 3100PSI (214 bar)

(1) Overhang based on 44" from center line of tail hinge pin to center line of trunnion on tandem axle trucks, with 2" clearance between cab and box.

(2) These capacities are for the body and payload together with an evenly distributed, nondiminishing, solid load for the full dump cycle. The center of gravity of the load is assumed to be at the center of the body. SPECIFICATIONS ARE SUBJECT TO CHANGE WITHOUT NOTICE.

*7 Year Limited  
Frame Warranty*

# HARSH

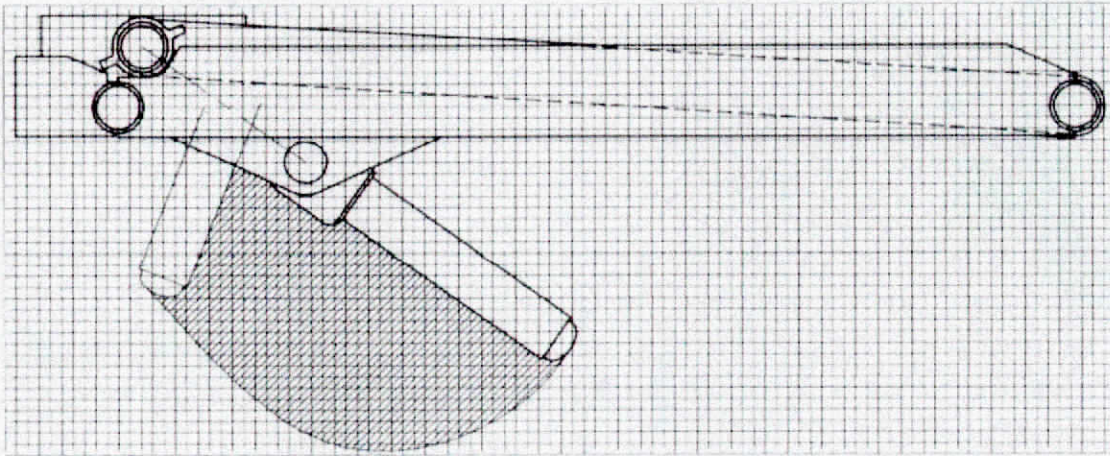
## Trailer Tipping Gear





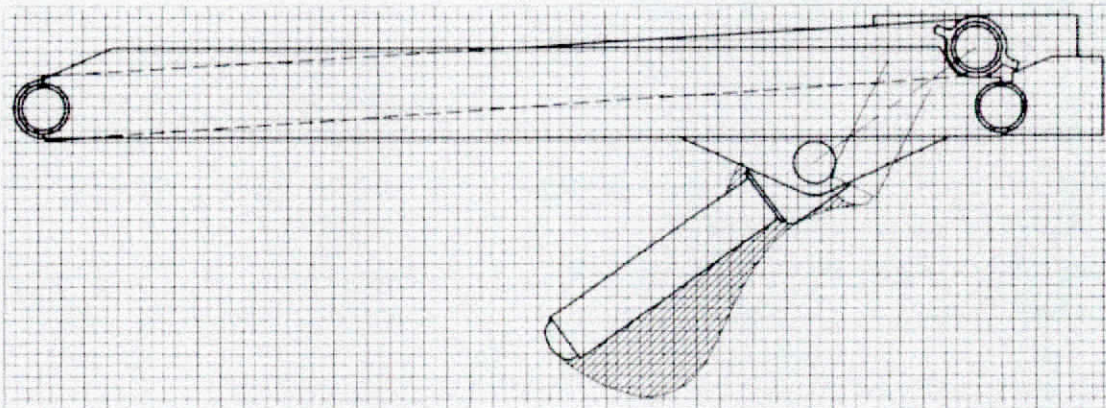
## REVERSE MOUNT

← CAB →



## STANDARD MOUNT

← CAB →



Cylinder Path: 1 square = 1 inch

