

# HPT-316 DUMP BODIES



\*DOES NOT INCLUDE FREIGHT\*

\* Includes Hoist 53-120, Doghouse\*



HPT-316 shown with optional equipment.



[www.duraclass.com](http://www.duraclass.com)

## Durability that Means Business

# HPT-316

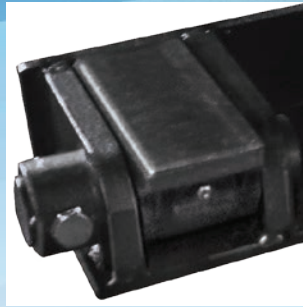
The DuraClass **HPT-316** dump body features clean horizontal side braces. Deep flanged longmembers eliminate the need for crossmembers making the HPT-316 easier to keep clean.



DuraClass HPT-316 features fully enclosed front corner posts.



DuraClass bodies come with full depth corner posts and enclosed tailgate hardware.



Greasable Rear Hinge with Optional Removable Pin.

## ADDITIONAL BODY OPTIONS

- Aluminum (Cab Shields & Tailgates only)
- Sloped Tailgate
- Reverse Asphalt Taper
- Sloping Side Panels
- Hi-Lift Tailgate, Air or Hydraulic
- Dual Action Side Swing Tailgate
- Body Side Steps and Handles
- Tarp Rails and Walk Rails
- Variety of Sliding Door Options
- Custom Side and Tailgate Heights
- Custom Body Bracing
- Air Operated Hoist Controls
- Variety of Cylinder/Doghouse Configurations
- Stainless Steel Bodies available

## PREMIUM STEEL CONSTRUCTION

All DuraClass dump bodies have high-tensile, minimum 45,000 psi steel. Additional steel and stainless steel options are available.

## HPT HOISTS

- Increased capacity
- Better stability
- Increased productivity
- Improved longevity

## HPT-316 DUMP BODY

	14'	15'	16'	17'	18'
Inside Length	14'	15'	16'	17'	18'
Width	7'	7'	7'	7'	7'
Body Capacity, yards	12-14	12-14	15-17	16-19	17-20
Material	3/16" floor & rear; 10 ga sides & front				
Side/Front/Rear Height, in.	42/54/50	38/54/46	44/56/52	44/64/52	44/68/52
Hoist Model	HPT53-120	HPT53-130	HPT63-140	HPT63-150	HPT63-160
Weight (Includes Hoist), lbs**	4412	4597	4880	5020	5160

All bodies shown with some optional equipment. Models and options are subject to change without notice.

HOIST MODEL	NTEA CLASS	WEIGHT** (LBS)	CAPACITY* (TONS)														
			13'		14'		15'		16'		17'		18'		19'		
Body Length	Overhang		6"	12"	12"	18"	12"	18"	12"	18"	12"	18"	12"	18"	12"	18"	
HPT53-120	80	745	23.3	25.6	23.7	26											
HPT53-130	80	750					23.4	25.3									
HPT63-140	120	1020							38.1	41.1	36.5	38.8					
HPT63-150	120	1040									38	40.6	36	38.2			
HPT63-160	120	1060											37	39.4	35.7	37.7	

\*Capacity is based on water-level load and approximately 50° dump angle.

\*\*Weight is less oil and PTO

Inverted telescopic hoists also available.



P.O. Box 49  
1425 Highway 25 North  
Tishomingo, MS 38873  
800.255.4345  
Fax: 800.728.4345  
www.duraclclass.com

CONTACT YOUR DISTRIBUTOR