



Galaxy2R® Two-Ram Baler (Wide Model)

*Full-penetration
compaction ram
produces high
density bales*

*Easily switch
between various
recyclable
materials with
the programmable
controller*

*Multi-purpose
door can serve as
a bale separator,
bale release, or
bale clamp*



**Environmental
Solutions Group**

A DOVER COMPANY

Marathon's line of Galaxy2R® two-ram balers feature a combination of state-of-the-art electronics and advanced structural engineering to make powerful and efficient balers.

Galaxy2R Two-Ram Baler

Powerful and efficient baling

Marathon's Galaxy2R two-ram balers feature a full-penetration compaction ram to produce high density bales. The programmable PLC controller features automatic and manual controls, diagnostics, and bale set-up functions. The controller allows you to easily switch recyclable materials. Adding the optional metals package makes the Galaxy2R perfect for scrap applications.

The Galaxy2R series balers feature a multi-purpose door that can serve as a bale separator, bale release, or bale clamp. It also allows for variable bale widths. The Galaxy2R balers also come with components such as a high-efficiency power unit, adjustable shear beam, replaceable and reversible shear blades, and main ram and ejector ram laser positioning.



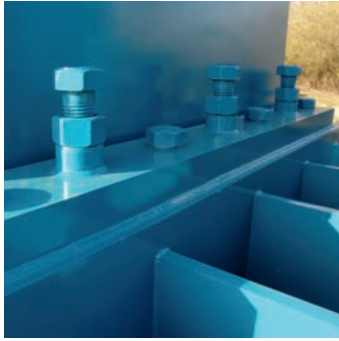
Shown with optional operator platform

The Galaxy2R is designed to fit a variety of applications:

- Non-Ferrous scrap*
- Material Recovery Facilities (MRF)
- Recycling centers
- Distribution centers
- Large paper and plastic processors
- MSW (with solid waste package)

** Subject to maximum recommended material size*

RECYCLING SOLUTIONS



The Galaxy2R® features an adjustable shear beam that enables you to adjust the shear blades from the exterior of the machine.



High-efficiency power units available from 30 HP up to 2x100 HP

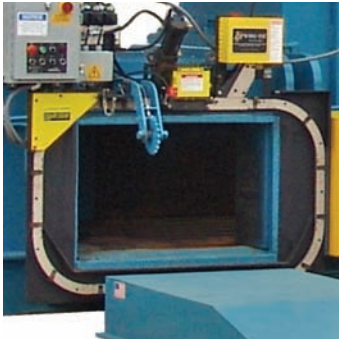
- TEFC motor (Totally Enclosed Fan Cooled)
- Flooded suction pumping system with high-flow hydraulic manifold
- 10 micron filtration system
- Pressure and current transducers
- Separate cooling and tier circuit and air-to-oil cooler.



The Galaxy2R features a heavy-duty reinforced honeycomb structure for maximum performance.



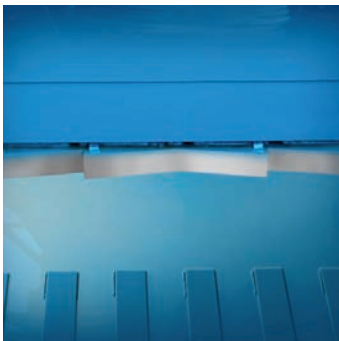
Maestro™ color touch-screen operator interface PLC programmable controller features automatic and manual controls, diagnostics and bale set-up functions. Available with multi-language function.



Multi-purpose door can serve as a bale separator, bale release, or bale clamp. It also allows for variable bale widths.



The main ram, ejector ram, and multi-purpose door are controlled by a long range laser sensor. The positioning is determined by the laser and eliminates the need for a counter wheel.



The Galaxy2R ram shear blade is replaceable and reversible. The body shear blade is serrated, adjustable, and replaceable. Replaceable 500 Brinell steel liners on the floor, sides, and platens offer superior wear resistance.



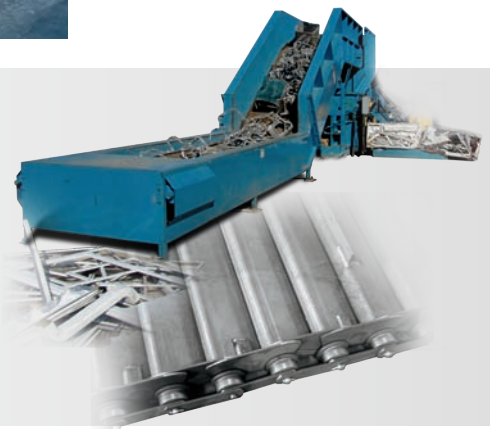
The optional stamper automatically clears shear jams.

EZ-TRAX™ Conveyors

Marathon Recycling Solutions offers custom engineered conveying systems to handle a wide variety of bulk material and scrap handling applications. These range from light-duty slider beds to heavy-duty steel belt conveyors and complete turnkey MRF systems.

Factory Start-ups

Marathon provides on-site set-up and comprehensive baler operation training for your personnel.



Galaxy2R® Two-Ram Baler (Wide Model)

Specifications	2R310W	2R450W
Power unit	2x30 / 100 / 2x50 / 2x75	100 / 2x50 / 2x75 / 2x100
Cycle Time (no load averages)	9.8 to 25.2 sec.	11.1 to 23.9 sec.
Compression force	314,160 LBF	452,390 LBF
Ram face pressure	188 psi	270 psi
Feed opening width	57" 1448mm	57" 1448mm
Feed opening length	70" / 84" / 102" 1778mm / 2134mm / 2591mm	84" / 102" 2134mm / 2591mm
Baler size (with 70"L feed opening)	31'7" x 20'1" x 4'4" 9627mm x 6121mm x 1321mm	N/A
Baler size (with 84"L feed opening)	33'10" x 20'1" x 4'4" 10312mm x 6121mm x 1321mm	37'3" x 22'2" x 4'7" 11354mm x 6756mm x 1397mm
Baler size (with 102"L feed opening)	37' x 20'1" x 4'4" 11278mm x 6121mm x 1321mm	40'3" x 22'2" x 4'7" 12268mm x 6756mm x 1397mm
Baler weights	77,500 to 91,000 lbs. 35153 kg to 41277 kg	102,200 to 114,100 lbs. 46357 kg to 51755 kg
Bale Weight Data		
OCC	up to 1,600 lbs. 726 kg	up to 1,850 lbs. 839 kg
SOP	up to 1,400 lbs. 635 kg	up to 1,600 lbs. 726 kg
ONP	up to 1,600 lbs. 726 kg	up to 1,800 lbs. 816 kg
PET	up to 1,300 lbs. 590 kg	up to 1,600 lbs. 726 kg
HDPE	up to 1,400 lbs. 635 kg	up to 1,600 lbs. 726 kg
UBC	up to 1,000 lbs. 454 kg	up to 1,200 lbs. 544 kg
Steel cans	up to 2,200 lbs. 998 kg	up to 2,600 lbs. 1179 kg
MSW	up to 2,200 lbs. 998 kg	up to 2,500 lbs. 1134 kg
AL extrusions*	up to 1,300 lbs. 590 kg	up to 1,350 lbs. 612 kg
AL siding	up to 1,600 lbs. 726 kg	up to 2,000 lbs. 907 kg
AL/CU radiators	up to 1,600 lbs. 726 kg	up to 2,000 lbs. 907 kg
Misc. AL*	up to 2,000 lbs. 907 kg	up to 2,400 lbs. 1089 kg
* subject to maximum recommended material size		

Rental and Leasing Programs Available

For detailed specifications, recommendations, or free economic studies comparing various systems, contact Marathon Customer Care at **1-800-633-8974**.

Authorized Dealer:



Marathon Equipment Company
P.O. Box 1798
Vernon, AL 35592-1798
800.633.8974
www.marathonequipment.com
NJPA Contract #060612-ESG



Environmental Solutions Group
A DOVER COMPANY

www.doveresg.com



Pictures in this literature are illustrative only. Specifications are subject to change without notice in order to accommodate improvements to the equipment. Complies with ANSI standard Z245.5 and applicable OSHA Regulations. Products must be used with safe practice and in accordance with said regulations and standards.



MARATHON® GALAXY 2R®
TWO-RAM BALER SPECIFICATIONS
2R-310W-84 - FULL PENETRATION MODELS
 Specification #310W84 Revision Date: 6/4/2013

Application - Most medium density recyclable fibers, plastic and metal recyclables & low density MSW

Construction - Heavy-duty structural members properly jugged & fixtured to ensure proper alignment.
 CAD designed reinforced & braced as required by engineering standards.

GENERAL PERFORMANCE SPECIFICATIONS

Charge Box Size		84"			
Horsepower		2 x 30	100	2 x 50	2 x 75
GPM		128	200	274	300
Average Dry Cycle Time in Sec.**		22.5	15.3	11.8	11
Cycles per Minute		2.6	3.9	5.0	5.4
Eject Cycle Time (5 ties)***		31 Sec.	30 Sec.	28 Sec.	28 Sec.
Oil Capacity		300 Gal.	400 Gal.	600 Gal.	600 Gal.
Displacement (CF/HR)		13,000	19,200	24,900	26,600
Infeed Density	Efficiency	TONS per Hour			
1.5 LB/CF	55%	5.4	7.9	10.3	11.0
3 LB/CF	46%	9.0	13.2	17.2	18.4
4.5 LB/CF	38%	11.1	16.4	21.3	22.7
6 LB/CF	32%	12.5	18.4	23.9	25.5

PRESSURE SPECIFICATIONS

Compressing Cylinder Diameter (in.)	10
Compressing Cylinder Stroke (in.)	140
Compressing Cylinder Effective Stroke (in.)	125.5
Compressing Cylinder Rod (in.)	7
Eject Cylinder Diameter (in.)	8
Eject Cylinder Stroke (in.)	90
Eject Cylinder Effective Stroke (in.)	63
Eject Cylinder Rod (in.)	6
Normal Operating Pressure (PSI)	4,000
Full Penetration Stroke	5" From Compression Wall
Compressing Force (PSI)	314,100# - 157 Tons (188 PSI)
Ejector Force (PSI)	201,000# - 100 Tons (199 PSI)

DIMENSIONAL SPECIFICATIONS

Feed Opening	57 3/4" W x 84" L			
Charge Box (Cube)	60" W x 84" L x 28" H (81.5 CF)			
Length	30'-4" (add 3'-6" f/ hyd clearance)			
Width	18'-6" (add 2' f/ hyd clear; add 7' f/ bale table)			
Body Height	51-1/4"			
Top of Hopper	92"			
Weight (incl power unit, no oil)	2x30 - 66,800 #	100 - 66,200 #	2x50 - 72,400 #	2x75 - 73,400 #
Weight w/Stamper Option (incl p.u.)	2x30 - 70,400 #	100 - 69,800 #	2x50 - 76,000 #	2x75 - 77,000 #

BALE WEIGHT & DENSITIES

Bale Size - Approximately 30" High x 45" Wide x 64" Long - (50 cubic feet)

Maximum Weights & Densities*

OCC	Up to 1,600# - (32#/CF)	UBC	Up to 1,100# - (22#/CF)
ONP	Up to 1,600# - (32#/CF)	PET	Up to 1,400# - (28#/CF)
Mixed Office Waste	Up to 1,600# - (32#/CF)	HDPE	Up to 1,450# - (29#/CF)
Copper Wire	Up to 3,000# - (60#/CF)	Steel Cans	Up to 2,000# - (40#/CF)
Aluminum Siding or Sheet	Up to 1,900# - (38#/CF)	MSW	Up to 2,500# - (50#/CF)

* Bale weights, densities and production ratings are based on the typical infeed densities indicated. Feed rates and densities may be affected by feed method, moisture content and material shapes. Production will be less when using the bale door. MARATHON® balers meet existing ANSI standards at the time of manufacture

** Cycle times include 2-1/2 seconds for decompression and valve shift.

*** Eject cycle times are with a plug bale and no bale door.

Power unit does not include hydraulic fluid.

**MARATHON TWO-RAM BALER SPECIFICATIONS
GALAXY 2R-310W-84 MODELS**

ELECTRICAL SPECIFICATIONS

Main Motor	2x30 HP, 100 HP, 2x50 HP, or 2x75 HP - TEFC
Main Voltage	460 Volt - 3 Phase - 60 Hertz
Starting Arrangement	Across the Line
Motor Control Center	UL Listed NEMA 12 Enclosure
Control Voltage	24 Volt DC - 120 VAC
Controls	PLC Controls with Bale Recipes and Diagnostics
Operator Interface	TFT Color Touchscreen
Disconnect	Lockable Circuit Breaker

HYDRAULIC SPECIFICATIONS

Powerpack Type	Flooded Suction Type with High-Flow Hydraulic Manifold (Except 100 HP)
Pump System - 4000 PSI	Low Pressure Vane Pump & High Pressure Piston Pump (100 HP Vane Pumps)
Powerpack Location	Floor-mounted located on ejector side of compression cylinder
Air to Oil Cooler	1 HP (2x30 & 100) - 3 HP (2x50 & 2x75) Fan
Circulating Pump	2 HP(100 HP) - 20 HP(2x50 & 2x75) - Includes Tier Circuit
Filtration	(100, 2x50, 2x75) 10 Micron; (2x30) 6 Micron
Tier Flow	12 GPM
Cylinder mount	Cross-tube self adjusting mount

GENERAL FEATURES

Automatic Wire Tier	Accent 470 or L & P Model 330 or 340 or equal
Adjustable gib bars (hold-downs) from outside the machine	
Shear Beam is adjustable from outside the machine (A-514 Steel) (S-7 Steel on Metals Package)	
Infrared Actuators (2 sets); Ultrasonic (2 sets)	
Regenerative hydraulic circuit	
Automation Pkg w/Infeed Management System	
Long Range Laser Sensor & Positioning on Main Ram, Ejector Ram, & bale door	
Ram shear blade is replaceable and reversible	
Body shear blade is serrated & replaceable	
Tongue & groove charge chamber floor	
bale door System - serves as separation door, bale release, bale clamp & allows bale width variation	
Hopper View Door	
5' Bale Table	
Free-standing operator center with PLC Controls and Color Touchscreen Interface	
CAD documented replaceable abrasive resistant steel liners on the floor, and sides	
Paint - baked on - 12 standard colors	

AVAILABLE OPTIONS

Operator Platform & Stairs
Hopper Monitoring System (High Definition Camera & Monitor)
Operators Cabin with A/C & Heat
Material Stamper
10" Color Enhanced Multi-language Touchscreen Interface
Solid Waste Package
Metals Package
Conveyor Controls with VFD or Motor Starter
Additional Photocell Actuators
Oil heater
Other wire tiers
Other voltages
Other hopper arrangements
Modem



P.O. Box 1798
Vernon, AL 35592-1798 USA
(205) 695-9105
Fax: (205) 695-7250

Specifications are subject to change without notice to accommodate improvements to the equipment. Certified in compliance with ANSI Regulations Z245.5 and all OSHA standards. Products must be used with safe practice and in accordance with said regulations and standards.