



Galaxy2R® Two-Ram Baler (Narrow Model)

*Full-penetration
compaction ram
produces high
density bales*

*Easily switch
between various
recyclable
materials with
the programmable
controller*

*Multi-purpose
door can serve as
a bale separator,
bale release, or
bale clamp*



**Environmental
Solutions Group**

A DOVER COMPANY

Marathon's line of Galaxy2R® narrow model balers feature a combination of state-of-the-art electronics and advanced structural engineering to make powerful and efficient balers.

Galaxy2R Two-Ram Narrow Model Baler

Powerful and efficient baling

Marathon's Galaxy2R two-ram narrow model balers feature a full-penetration compaction ram to produce high density bales. The programmable PLC controller features automatic and manual controls, diagnostics, and bale set-up functions. The controller allows you to easily switch recyclable materials. Adding the optional metals package makes the Galaxy2R narrow model perfect for scrap applications.

The Galaxy2R narrow model balers feature a multi-purpose door that can serve as a bale separator, bale release, or bale clamp. It also allows for variable bale widths. The Galaxy2R narrow model balers also come with components such as a high-efficiency power unit, adjustable shear beam, replaceable and reversible shear blades, and main ram and ejector ram laser positioning.

The Galaxy2R narrow model is designed to fit a variety of applications:

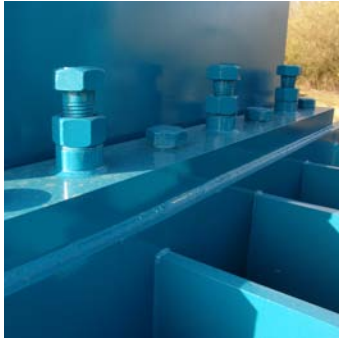
- Non-Ferrous scrap*
- Material Recovery Facilities (MRF)
- Recycling centers
- Distribution centers
- Large paper and plastic processors
- MSW (with solid waste package)

** Subject to maximum recommended material size*



Shown with optional operator platform

RECYCLING SOLUTIONS



The Galaxy2R® narrow model features an adjustable shear beam that enables you to adjust the shear blades from the exterior of the machine.



High-efficiency power units available from 30 HP up to 2x100 HP

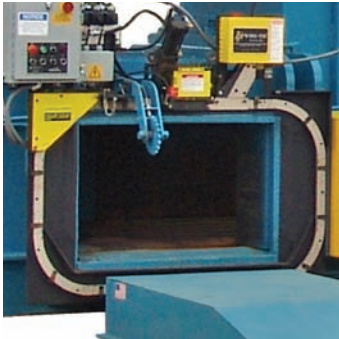
- TEFC motor (Totally Enclosed Fan Cooled)
- Flooded suction pumping system with high-flow hydraulic manifold
- 10 micron filtration system
- Pressure and current transducers
- Separate cooling and tier circuit and air-to-oil cooler.



The Galaxy2R narrow model features a heavy-duty reinforced honeycomb structure for maximum performance.



Maestro™ color touch-screen operator interface PLC programmable controller features automatic and manual controls, diagnostics and bale set-up functions. Available with multi-language function.



Multi-purpose door can serve as a bale separator, bale release, or bale clamp. It also allows for variable bale widths.



The main ram, ejector ram, and multi-purpose door are controlled by a long range laser sensor. The positioning is determined by the laser and eliminates the need for a counter wheel.



The Galaxy2R narrow model ram shear blade is replaceable and reversible. The body shear blade is serrated, adjustable, and replaceable. Replaceable 500 Brinell steel liners on the floor, sides, and platens offer superior wear resistance.



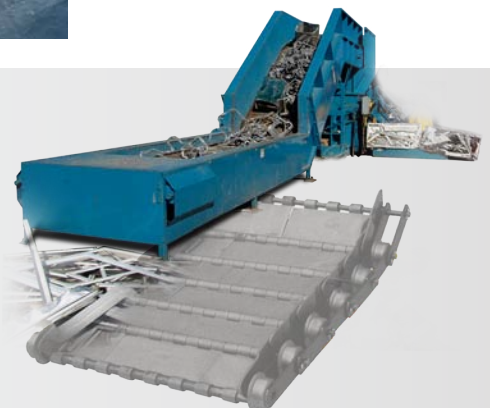
The optional stamper automatically clears shear jams.

EZ-TRAX™ Conveyors

Marathon Recycling Solutions offers custom engineered conveying systems to handle a wide variety of bulk material and scrap handling applications. These range from light-duty slider beds to heavy-duty steel belt conveyors and complete turnkey MRF systems.

Factory Start-ups

Marathon provides on-site set-up and comprehensive baler operation training for your personnel.



Galaxy2R® Two-Ram Baler (Narrow Model)

Specifications	2R150N	2R190N	2R250N
Power unit	30 and 50	50 and 2x30	50 and 2x30
GPM	73 and 137	137 and 128	137 and 128
Cycle Time (no load averages)	11.9 to 19.1 sec.	16.0 to 16.9 sec.	18.4 to 19.5 sec.
Compression force	150, 800 LBF	190,850 LBF	254,470 LBF
Feed opening (L x W)	40 3/4" x 57" ?mm	40 3/4" x 70" ?mm	40 3/4" x 84" ?mm
Baler size (L x W x H)	28'7" x 17'6" x 44" ?mm x ?mm x ?mm	31'6" x 17'6" x 44" ?mm x ?mm x ?mm	35'4" x 20'1" x 48 1/2" ?mm x ?mm x ?mm
Compressing cylinder bore	8" ?mm	9" ?mm	9" ?mm
Compressing cylinder rod	6" ?mm	6" ?mm	7" ?mm
Compressing cylinder stroke	120" ?mm	133" ?mm	153" ?mm
Bale Weight Data			
OCC	up to 1,200 lbs. ? kg	up to 1,300 lbs. ? kg	up to 1,450 lbs. ? kg
SOP	up to 1,200 lbs. ? kg	up to 1,300 lbs. ? kg	up to 1,400 lbs. ? kg
ONP	up to 1,400 lbs. ? kg	up to 1,500 lbs. ? kg	up to 1,500 lbs. ? kg
PET	up to 800 lbs. ? kg	up to 900 lbs. ? kg	up to 1,100 lbs. ? kg
HDPE	up to 900 lbs. ? kg	up to 1,000 lbs. ? kg	up to 1,200 lbs. ? kg
UBC	up to 700 lbs. ? kg	up to 850 lbs. ? kg	up to 950 lbs. ? kg
Steel cans	up to 1,100 lbs. ? kg	up to 2,000 lbs. ? kg	up to 2,200 lbs. ? kg
MSW	up to 1,500 lbs. ? kg	up to 1,800 lbs. ? kg	up to 2,000 lbs. ? kg
AL extrusions*	up to 900 lbs. ? kg	up to 1,100 lbs. ? kg	up to 1,200 lbs. ? kg
AL siding	up to 1,100 lbs. ? kg	up to 2,000 lbs. 907 kg	up to 1,500 lbs. ? kg
AL/CU radiators	up to 1,200 lbs. ? kg	up to 1,400 lbs. ? kg	up to 1,500 lbs. ? kg
Misc. AL*	up to 1,400 lbs. ? kg	up to 1,600 lbs. ? kg	up to 1,800 lbs. ? kg
Cycle time calculated based on 1/2 penetration into bale chamber			

Rental and Leasing Programs Available

For detailed specifications, recommendations, or free economic studies comparing various systems, contact Marathon Customer Care at **1-800-633-8974**.

Authorized Dealer:



Marathon Equipment Company
P.O. Box 1798
Vernon, AL 35592-1798
800.633.8974
www.marathonequipment.com
NJPA Contract #060612-ESG



Environmental Solutions Group
A DOVER COMPANY

www.doveresg.com



Pictures in this literature are illustrative only. Specifications are subject to change without notice in order to accommodate improvements to the equipment. Complies with ANSI standard Z245.5 and applicable OSHA Regulations. Products must be used with safe practice and in accordance with said regulations and standards.



MARATHON® GALAXY 2R®
TWO-RAM BALER SPECIFICATIONS
2R-250N-84 - FULL PENETRATION MODELS
 Specification #250N Revision Date: 1/15/2009

Application - Most medium density recyclable fibers, plastic and metal recyclables & low density MSW

Construction - Heavy-duty structural members properly jigged & fixtured to ensure proper alignment.
 CAD designed reinforced & braced as required by engineering standards.

GENERAL PERFORMANCE SPECIFICATIONS

Charge Box Size		84"			
Horsepower		50	2 x 30	100	2 x 50
GPM		137	128	200	274
Average Dry Cycle Time in Sec.**		18.4	19.5	13.4	10.4
Cycles per Minute		3.2	3.0	4.4	5.7
Eject Cycle Time (4 ties)***		33 Sec.	22 Sec.	23 Sec.	22 Sec.
Oil Capacity		400 Gal.	300 Gal.	400 Gal.	600 Gal.
Displacement (CF/HR)		13,200	12,700	16,600	20,300
Infeed Density	Efficiency	TONS per Hour			
1.5 LB/CF	55%	5.4	5.2	6.8	8.4
3 LB/CF	46%	9.1	8.8	11.5	14.1
4.5 LB/CF	38%	11.2	10.9	14.2	17.4

PRESSURE SPECIFICATIONS

Compressing Cylinder	9" Diameter - 153" Stroke - 6" Rod
Eject Cylinder	8" Diameter - 68" Stroke - 6" Rod
Normal Operating Pressure	4,000 PSI
Full Penetration Stroke	5" From Compression Wall
Compressing Force (PSI)	254,100# - 127 Tons (212 PSI)
Ejector Force (PSI)	201,000# - 100 Tons (132 PSI)

DIMENSIONAL SPECIFICATIONS

Feed Opening	40 3/4" W x 84" L			
Charge Box (Cube)	43" W x 84" L x 28" H (59.5 CF)			
Length	31'-10" (add 3'-6" f/ hyd clearance)			
Width	14'-11" (add 2' f/ hyd clear; add 7' f/ bale table)			
Body Height	48-1/2"			
Top of Hopper	92"			
Weight (incl power unit, no oil)	50 HP - 50,200 #	2x30 HP - 51,600 #	100 HP - 51,000 #	2x50 HP - 53,600 #
Weight w/Stamper Option (incl p.u.)	50 HP - 52,700 #	2x30 HP - 54,100 #	100 HP - 53,500 #	2x50 HP - 56,100 #

BALE WEIGHT & DENSITIES

Bale Size - Approximately 30" High x 45" Wide x 64" Long - (50 cubic feet)

Maximum Weights & Densities*

OCC	Up to 1,400# - (28#/CF)	UBC	Up to 1000# - (20#/CF)
ONP	Up to 1,450# - (29#/CF)	PET	Up to 1,050# - (21#/CF)
Mixed Office Waste	Up to 1,450# - (29#/CF)	HDPE	Up to 1,100# - (22#/CF)
Copper Wire	Up to 3,000# - (60#/CF)	Radiators	Up to 2,000# - (40#/CF)
Aluminum Siding or Sheet	Up to 2,000# - (40#/CF)	MSW	Up to 2,500# - (50#/CF)

* Bale weights, densities and production ratings are based on the typical infeed densities indicated. Feed rates and densities may be affected by feed method, moisture content and material shapes. Production will be less when using the **NexDoor®**. **NEXGEN®** balers meet existing ANSI standards at the time of manufacture

** Cycle times include 2-1/2 seconds for decompression and valve shift.

*** Eject cycle times are with a plug bale and no bale door.

Power unit does not include hydraulic fluid.

NEXGEN TWO-RAM BALER SPECIFICATIONS
GALAXY 2R-250N-84 MODELS

ELECTRICAL SPECIFICATIONS

Main Motor	50 HP, 2x30 HP, or 100 HP - TEFC
Main Voltage	460 Volt - 3 Phase - 60 Hertz
Starting Arrangement	Across the Line
Motor Control Center	UL Listed NEMA 12 Enclosure
Control Voltage	24 Volt DC - 120 VAC
Controls	PLC Controls with Bale Recipes and Diagnostics
Operator Interface	TFT Color Touchscreen
Disconnect	Lockable Circuit Breaker

HYDRAULIC SPECIFICATIONS

Powerpack Type	Flooded Suction Type with High-Flow Hydraulic Manifold (Except 100 HP)
Pump System - 4000 PSI	Hi-Lo Vane Pumps (100); Piston (2 X 30); Piston & Vane (50)
Powerpack Location	Floor-mounted located on ejector side of compression cylinder
Air to Oil Cooler	1 HP Fan
Circulating Pump	2 HP(100 HP); 15 HP (50 HP)
Filtration	(100)10 Micron; (2 X 30 & 50) 6 Micron
Tier Flow	12 GPM
Cylinder mount	Cross-tube self adjusting mount

GENERAL FEATURES

Automatic Wire Tier	Accent 470 or L & P Model 330 or 340 or equal
Adjustable gib bars (hold-downs) from outside the machine	
Infrared Actuators (2 sets); Ultrasonic (2 sets)	
Regenerative hydraulic circuit	
Automation Pkg w/Infeed Management System	
Long Range Laser Sensor & Positioning on Main Ram, Ejector Ram, & NexDoor	
Ram shear blade is replaceable and reversible	
Body shear blade is serrated & replaceable, Externally Adjustable	
Tongue & groove charge chamber floor	
NexDoor System - serves as separation door, bale release, bale clamp & allows bale width variation	
Hopper View Door	
5' Bale Table	
Free-standing operator center with PLC Controls and Color Touchscreen Interface	
CAD documented replaceable abrasive resistant steel liners on the floor, and sides	
Paint - baked on - 12 standard colors	

AVAILABLE OPTIONS

Operator Platform & Stairs
Hopper Monitoring System (High Definition Camera & Monitor)
Operators Cabin with A/C & Heat
Material Stamper
10" Color Enhanced Multi-language Touchscreen Interface
Solid Waste Package
Metals Package
Conveyor Controls with VFD or Motor Starter
Additional Photocell Actuators
Oil heater
Other wire tiers