



# Galaxy2R® Two-Ram Baler (Narrow Model)

*Full-penetration  
compaction ram  
produces high  
density bales*

*Easily switch  
between various  
recyclable  
materials with  
the programmable  
controller*

*Multi-purpose  
door can serve as  
a bale separator,  
bale release, or  
bale clamp*



**Environmental  
Solutions Group**

A DOVER COMPANY

***Marathon's line of Galaxy2R® narrow model balers feature a combination of state-of-the-art electronics and advanced structural engineering to make powerful and efficient balers.***

## Galaxy2R Two-Ram Narrow Model Baler

### Powerful and efficient baling

Marathon's Galaxy2R two-ram narrow model balers feature a full-penetration compaction ram to produce high density bales. The programmable PLC controller features automatic and manual controls, diagnostics, and bale set-up functions. The controller allows you to easily switch recyclable materials. Adding the optional metals package makes the Galaxy2R narrow model perfect for scrap applications.

The Galaxy2R narrow model balers feature a multi-purpose door that can serve as a bale separator, bale release, or bale clamp. It also allows for variable bale widths. The Galaxy2R narrow model balers also come with components such as a high-efficiency power unit, adjustable shear beam, replaceable and reversible shear blades, and main ram and ejector ram laser positioning.

### The Galaxy2R narrow model is designed to fit a variety of applications:

- Non-Ferrous scrap\*
- Material Recovery Facilities (MRF)
- Recycling centers
- Distribution centers
- Large paper and plastic processors
- MSW (with solid waste package)

*\* Subject to maximum recommended material size*



*Shown with optional operator platform*

# RECYCLING SOLUTIONS



The Galaxy2R® narrow model features an adjustable shear beam that enables you to adjust the shear blades from the exterior of the machine.



High-efficiency power units available from 30 HP up to 2x100 HP

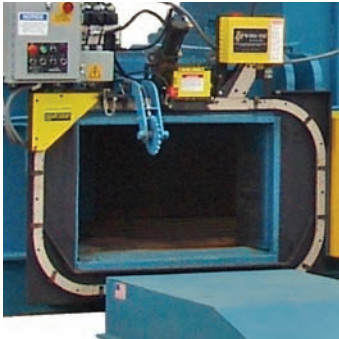
- TEFC motor (Totally Enclosed Fan Cooled)
- Flooded suction pumping system with high-flow hydraulic manifold
- 10 micron filtration system
- Pressure and current transducers
- Separate cooling and tier circuit and air-to-oil cooler.



The Galaxy2R narrow model features a heavy-duty reinforced honeycomb structure for maximum performance.



Maestro™ color touch-screen operator interface PLC programmable controller features automatic and manual controls, diagnostics and bale set-up functions. Available with multi-language function.



Multi-purpose door can serve as a bale separator, bale release, or bale clamp. It also allows for variable bale widths.



The main ram, ejector ram, and multi-purpose door are controlled by a long range laser sensor. The positioning is determined by the laser and eliminates the need for a counter wheel.



The Galaxy2R narrow model ram shear blade is replaceable and reversible. The body shear blade is serrated, adjustable, and replaceable. Replaceable 500 Brinell steel liners on the floor, sides, and platens offer superior wear resistance.



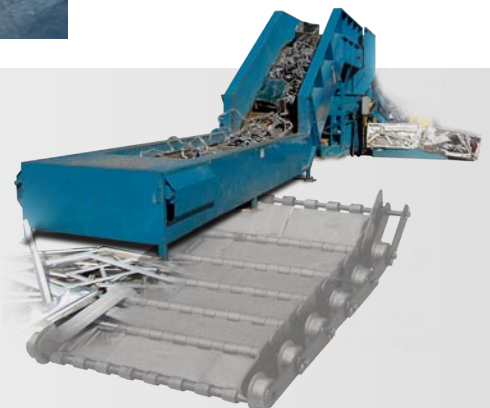
The optional stamper automatically clears shear jams.

## EZ-TRAX™ Conveyors

Marathon Recycling Solutions offers custom engineered conveying systems to handle a wide variety of bulk material and scrap handling applications. These range from light-duty slider beds to heavy-duty steel belt conveyors and complete turnkey MRF systems.

## Factory Start-ups

Marathon provides on-site set-up and comprehensive baler operation training for your personnel.



## Galaxy2R® Two-Ram Baler (Narrow Model)

Specifications	2R150N	2R190N	2R250N
Power unit	30 and 50	50 and 2x30	50 and 2x30
GPM	73 and 137	137 and 128	137 and 128
Cycle Time (no load averages)	11.9 to 19.1 sec.	16.0 to 16.9 sec.	18.4 to 19.5 sec.
Compression force	150, 800 LBF	190,850 LBF	254,470 LBF
Feed opening (L x W)	40 3/4" x 57" ?mm	40 3/4" x 70" ?mm	40 3/4" x 84" ?mm
Baler size (L x W x H)	28'7" x 17'6" x 44" ?mm x ?mm x ?mm	31'6" x 17'6" x 44" ?mm x ?mm x ?mm	35'4" x 20'1" x 48 1/2" ?mm x ?mm x ?mm
Compressing cylinder bore	8" ?mm	9" ?mm	9" ?mm
Compressing cylinder rod	6" ?mm	6" ?mm	7" ?mm
Compressing cylinder stroke	120" ?mm	133" ?mm	153" ?mm
<b>Bale Weight Data</b>			
OCC	up to 1,200 lbs. ? kg	up to 1,300 lbs. ? kg	up to 1,450 lbs. ? kg
SOP	up to 1,200 lbs. ? kg	up to 1,300 lbs. ? kg	up to 1,400 lbs. ? kg
ONP	up to 1,400 lbs. ? kg	up to 1,500 lbs. ? kg	up to 1,500 lbs. ? kg
PET	up to 800 lbs. ? kg	up to 900 lbs. ? kg	up to 1,100 lbs. ? kg
HDPE	up to 900 lbs. ? kg	up to 1,000 lbs. ? kg	up to 1,200 lbs. ? kg
UBC	up to 700 lbs. ? kg	up to 850 lbs. ? kg	up to 950 lbs. ? kg
Steel cans	up to 1,100 lbs. ? kg	up to 2,000 lbs. ? kg	up to 2,200 lbs. ? kg
MSW	up to 1,500 lbs. ? kg	up to 1,800 lbs. ? kg	up to 2,000 lbs. ? kg
AL extrusions*	up to 900 lbs. ? kg	up to 1,100 lbs. ? kg	up to 1,200 lbs. ? kg
AL siding	up to 1,100 lbs. ? kg	up to 2,000 lbs. 907 kg	up to 1,500 lbs. ? kg
AL/CU radiators	up to 1,200 lbs. ? kg	up to 1,400 lbs. ? kg	up to 1,500 lbs. ? kg
Misc. AL*	up to 1,400 lbs. ? kg	up to 1,600 lbs. ? kg	up to 1,800 lbs. ? kg
Cycle time calculated based on 1/2 penetration into bale chamber			

### Rental and Leasing Programs Available

For detailed specifications, recommendations, or free economic studies comparing various systems, contact Marathon Customer Care at **1-800-633-8974**.

### Authorized Dealer:



**Marathon Equipment Company**  
P.O. Box 1798  
Vernon, AL 35592-1798  
800.633.8974  
[www.marathonequipment.com](http://www.marathonequipment.com)  
NJPA Contract #060612-ESG



**Environmental Solutions Group**  
A DOVER COMPANY

[www.doveresg.com](http://www.doveresg.com)



Pictures in this literature are illustrative only. Specifications are subject to change without notice in order to accommodate improvements to the equipment. Complies with ANSI standard Z245.5 and applicable OSHA Regulations. Products must be used with safe practice and in accordance with said regulations and standards.



# 2R-150N-57



## MARATHON® GALAXY 2R® - TWO-RAM BALER SPECIFICATIONS

Revision Date: 6/4/2013

**Application** - Most medium density recyclable fibers, plastic and metal recyclables & low density MSW

**Construction** - Heavy-duty structural members properly jigged & fixtured to ensure proper alignment.  
CAD designed reinforced & braced as required by engineering standards.

### GENERAL PERFORMANCE SPECIFICATIONS

Charge Box Size	57"		
Horsepower	30	50	
GPM	73	137	
Average Dry Cycle Time in Sec.**	19.1	11.9	
Cycles per Minute	3.1	5.0	
Eject Cycle Time in Sec.(4 ties)***	38	28	
Oil Capacity	150 Gal.	400 Gal.	
Displacement (CF/HR)	7,500	11,900	
Infeed Density	Efficiency	TONS per Hour	
1.5 LB/CF	55%	3.1	4.9
3 LB/CF	46%	5.2	8.2
4.5 LB/CF	38%	6.4	10.2

### PRESSURE SPECIFICATIONS

Compressing Cylinder Diameter (in.)	8
Compressing Cylinder Stroke (in.)	120
Effective Stroke at Half Penetration (in.)	98.5
Compressing Cylinder Rod (in.)	6
Eject Cylinder Diameter (in.)	7
Eject Cylinder Stroke (in.)	68
Effective Stroke (in.)	45
Eject Cylinder Rod (in.)	5
Normal Operating Pressure (PSI)	3,000
Full Penetration Stroke	5" From Compression Wall
Compressing Force (PSI)	150,800# - 75 Tons (125 PSI)
Ejector Force (PSI)	115,500# - 58 Tons (81 PSI)

### DIMENSIONAL SPECIFICATIONS

Feed Opening	40 3/4" W x 57" L		
Charge Box (Cube)	43" W x 57" L x 28" H (39.7 CF)		
Length	25'-10" (add 3'-6" f/ hyd clearance)		
Width	14'-11" (add 2' f/hyd clear; add 7' f/ bale table)		
Body Height	44"		
Top of Hopper	92"		
Weight (incl power unit, no oil)	30 HP - 35,500 #	50 HP - 37,500 #	
Weight w/Stamper Option (incl p.u.)	30 HP - 39,300 #	50 HP - 41,500 #	

### BALE WEIGHT & DENSITIES

**Bale Size - Approximately 30" High x 45" Wide x 64" Long - (50 cubic feet)**

**Maximum Weights & Densities\***

OCC	Up to 1,300# - (26#/CF)	UBC	Up to 800# - (16#/CF)
ONP	Up to 1,400# - (28#/CF)	PET	Up to 900# - (18#/CF)
Mixed Office Waste	Up to 1,400# - (28#/CF)	HDPE	Up to 950# - (19#/CF)

\* Bale weights, densities and production ratings are based on the typical infeed densities indicated. Feed rates and densities may be affected by feed method, moisture content and material shapes. Production will be less when using the bale door. MARATHON® balers meet existing ANSI standards at the time of manufacture.

\*\* Cycle times include 1-1/2 seconds for decompression and valve shift.

† Cycle time @ 1/2 penetration

\*\*\* Eject cycle times are with a plug bale and no bale door.

22 kW includes hydraulic oil. 37 kW does not include hydraulic oil.

# **GALAXY 2R-150N-57**

<b>ELECTRICAL SPECIFICATIONS</b>	
Main Motor	30 or 50 HP- TEFC
Main Voltage	460 Volt - 3 Phase - 60 Hertz
Starting Arrangement	Across the Line
Motor Control Center	UL Listed NEMA 12 Enclosure
Control Voltage	24 Volt DC - 120 VAC
Controls	PLC Controls with Bale Recipes and Diagnostics
Operator Interface	TFT Color Touchscreen
Disconnect	Lockable Circuit Breaker

<b>HYDRAULIC SPECIFICATIONS</b>	
Powerpack Type	Flooded Suction Type with High-Flow Hydraulic Manifold
Pump System - 3000 PSI	Hi-Lo Vane Pumps - 30HP; Piston & Vane Pumps - 50HP
Powerpack Location	Floor-mounted located on ejector side of compression cylinder
Air to Oil Cooler	1/2 HP Fan (30); 1 HP Fan (2x30)
Circulating Pump	15 HP(50 HP)
Filtration	6 Micron
Tier Flow	12 GPM
Cylinder mount	Cross-tube self adjusting mount

<b>GENERAL FEATURES</b>	
Automatic Wire Tier	Accent 470 or L & P Model 330 or 340 or equal
Adjustable gib bars (hold-downs) from outside the machine	
Infrared Actuators (2 sets); Ultrasonic (2 sets)	
Regenerative hydraulic circuit	
Automation Pkg w/Infeed Management System	
Long Range Laser Sensor & Positioning on Main Ram, Ejector Ram, & bale door	
Ram shear blade is replaceable and reversible	
Body shear blade is serrated & replaceable	
bale door System - serves as separation door, bale release, bale clamp & allows bale width variation	
Hopper View Door	
5' Bale Table	
Free-standing operator center with PLC Controls and Color Touchscreen Interface	
CAD documented replaceable abrasive resistant steel liners on the floor, and sides	
Paint - baked on - 12 standard colors	

<b>AVAILABLE OPTIONS</b>	
Operator Platform & Stairs	
Hopper Monitoring System (High Definition Camera & Monitor)	
Operators Cabin with A/C & Heat	
Material Stamper	
10" Color Enhanced Multi-language Touchscreen Interface	
Solid Waste Package	
Metals Package	
Conveyor Controls with VFD or Motor Starter	
Additional Photocell Actuators	
Oil heater	
Tongue & Groove Floor	
Externally Adjustable Shear Beam	
Other hopper arrangements	
Modem	



P.O. Box 1798  
 Vernon, AL 35592-1798 USA  
 (205) 695-9105  
**Fax:** (205) 695-7250

Specifications are subject to change without notice to accommodate improvements to the equipment. Certified in compliance with ANSI Regulations Z245.5 and all OSHA standards. Products must be used with safe practice and in accordance with said regulations and standards.