

ENGINE

Model	Isuzu AQ-6UZ1X CEGR, SCR, DOC
Emissions Certification	Tier 4 Final
Fuel	Requires ultra low-sulfur fuel B5 biodiesel tolerant
Type	Water-cooled, 4-cycle, high pressure common rail system. Turbo-charged w/ air cooled intercooler, SCR system
Cylinders	6-cylinder in-line
Displacement	600 in ³ (9.8 L)
Bore/Stroke	4.72 x 5.71 in (120 x 145 mm)
Fuel injection	Direct injection – electronic
Fuel filter	Replaceable, full flow spin-on cartridge
Air filter	Dry type element w/ warning restriction indicator
Oil filter	Replaceable, full flow spin-on cartridge
Engine gradeability:	
Side-to-side	35°
Fore and aft	35°
Net horsepower – SAE J1349 @ 2000 RPM:	
	362 hp (270 kW)
Net horsepower – SAE J1349 @ 2000 RPM: w/ fan pump activated	329 hp (245 kW)
Net max. torque – SAE J1349 @ 1500 RPM:	
	1,005 lb-ft (1 363 N-m)
Cooling operating range:	
	109° to -13° F (43° to -25° C)
Oil	Requires low-ash oil CJ-4

DRIVETRAIN

Travel control	Dual stage relief/ counter balance design
Brakes	Mechanical disc
Service brakes	SAHR disc – each motor
Two speed travel:	
Max. high speed	3.3 mph (5.3 kph)
Max. low speed	2.0 mph (3.2 kph)
Automatic downshift	
Drawbar pull	76,000 lbf (338 kN)
Gradeability	70% – 35° Slope

ELECTRICAL

Voltage	24 Volts
Alternator rating	50 amp
Batteries	2 x 12 Volt
Battery reserve capacity	128 Ah/5 hour
Work lights – 5 2 boom, 1 upper, 2 cab	24 Volt/70 watt

OPERATOR ENVIRONMENT

Air conditioner output	18,100 BTU/hr
Heater output	20,150 BTU/hr
Sound level inside cab – ISO6395	71.0 dBA
Electrical outlet	12 Volt
Cab interior light	10 watt
Rear view and Side view cameras	Standard
Seat	Heated, air-suspension

ATTACHMENT

Boom	21 ft 6 in (6 550 mm)
Arm options	8 ft 4 in (2 530 mm)
Bucket digging force*	64,500 lbf (287 kN)
w/ Auto Power-Boost	70,400 lbf (313 kN)

NOTE: *Digging force ratings based on ISO6015.

OPERATING WEIGHT

Operating weight	111,800 lb (50 700 kg)
w/ shoes	2 ft 11 in (900 mm)
w/ boom	21 ft 6 in (6 550 mm)
w/ arm	8 ft 4 in (2 530 mm)
w/ bucket	5,291 lb (2 400 kg)
w/ counterweight	22,000 lb (10 000 kg)

NOTE: W/ operator/full fuel/standard equipment/
fixed sideframe undercarriage.

GROUND PRESSURE

@ Standard operating weight 8.4 psi (0.58 bar)
w/ 35.4 in (900 mm) triple semi-grouser shoes

HYDRAULICS

System design	Open center
Main pumps	Two variable displacement/ axial piston
Max. rated flow per pump:	
	96.2 gpm (364 L/min)
Max. rated flow total:	
	192.3 gpm (728 L/min)
System pressures:	
Boom, arm and bucket	4,550 psi (314 bar)
w/ Power Boost	4,980 psi (343 bar)
Travel circuits	4,980 psi (343 bar)
Swing circuits	4,270 psi (294 bar)
Pilot pump	1 x gear design
Max. capacity	7.9 gpm (30.0 L/min)

Controls	w/ boom/arm holding valve
Right track travel, bucket, boom and arm acceleration.	Four-spool section
Left track travel, auxiliary, swing, boom acceleration and arm.	Five-spool section

Work Mode selections	SP: Speed Priority H: Heavy Duty A: Automatic
----------------------	---

Swing motor	Fixed displacement axial piston
Swing final drive	Planetary gear reduction
Travel motor	Two-speed independent travel/axial piston

HYDRAULIC CYLINDERS

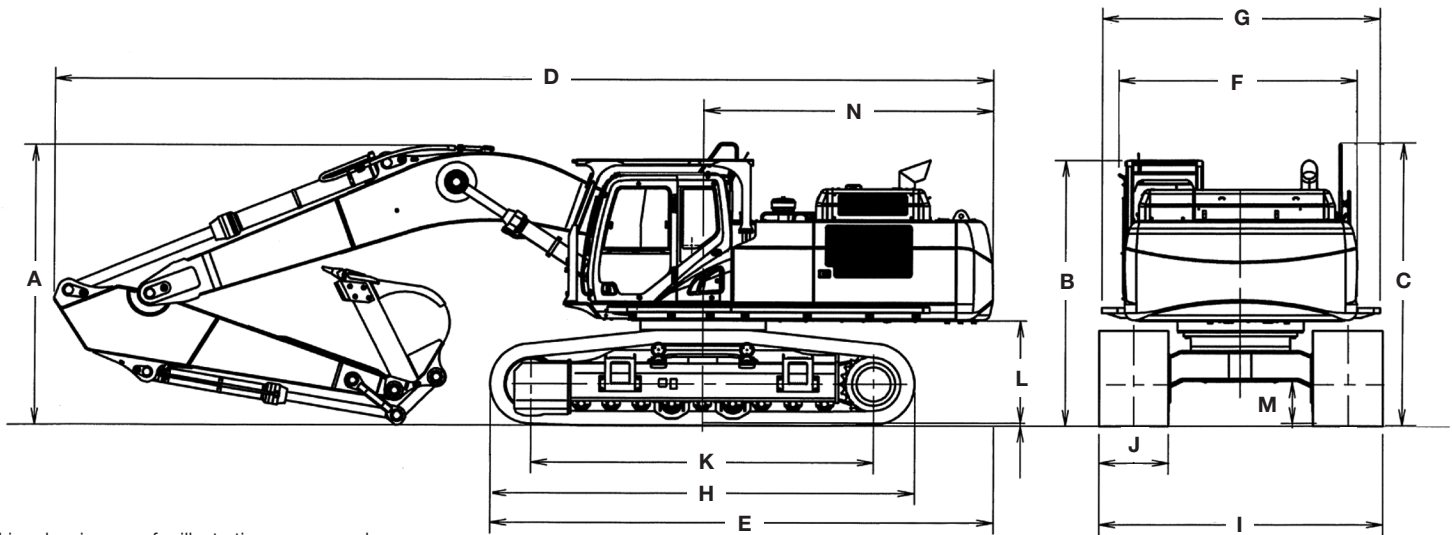
Boom cylinders	Two (2)
Cylinder bore	6.7 in (170 mm)
Cylinder rod diameter	4.5 in (115 mm)
Cylinder stroke	61.0 in (1 550 mm)
Arm cylinder	One (1)
Cylinder bore	7.5 in (190 mm)
Cylinder rod diameter	5.1 in (130 mm)
Cylinder stroke	75.6 in (1 920 mm)
Bucket cylinder	One (1)
Cylinder bore	6.7 in (170 mm)
Cylinder rod diameter	4.5 in (115 mm)
Cylinder stroke	52.6 in (1 335 mm)

SERVICE CAPACITIES

Fuel tank	172 gal (650 L)
Hydraulic system	122 gal (460 L)
Hydraulic tank	61 gal (230 L)
Engine oil w/ filter	10.8 gal (41 L)
Swing drive	2.8 gal (10.5 L)
Final drive – each side	4.0 gal (15 L)
Cooling system	14.6 gal (55.1 L)
DEF tank	40 gal (152 L)

OTHER SPECIFICATIONS

Swing speed	0 - 9.1 RPM
Swing torque	111,000 lb-ft (150 000 N-m)
Swing brake	Mechanical disc
Undercarriage:	
Length	17 ft 11 in (5 450 mm)
Track gauge	9 ft 0 in (2 750 mm)
Carrier rollers – each side	2
Track rollers – each side	9
Shoes – triple grouser – each side	50
Shoe width – std.	2 ft 11 in (900 mm)
Link pitch	9 in (229 mm)
Track:	
Chain	Grease lubricated/strutted
Guides	Single
Adjustment	Hydraulic



Line drawings are for illustrative purpose only and may not be exact representation of unit.

DIMENSIONS – FIXED UNDERCARRIAGE

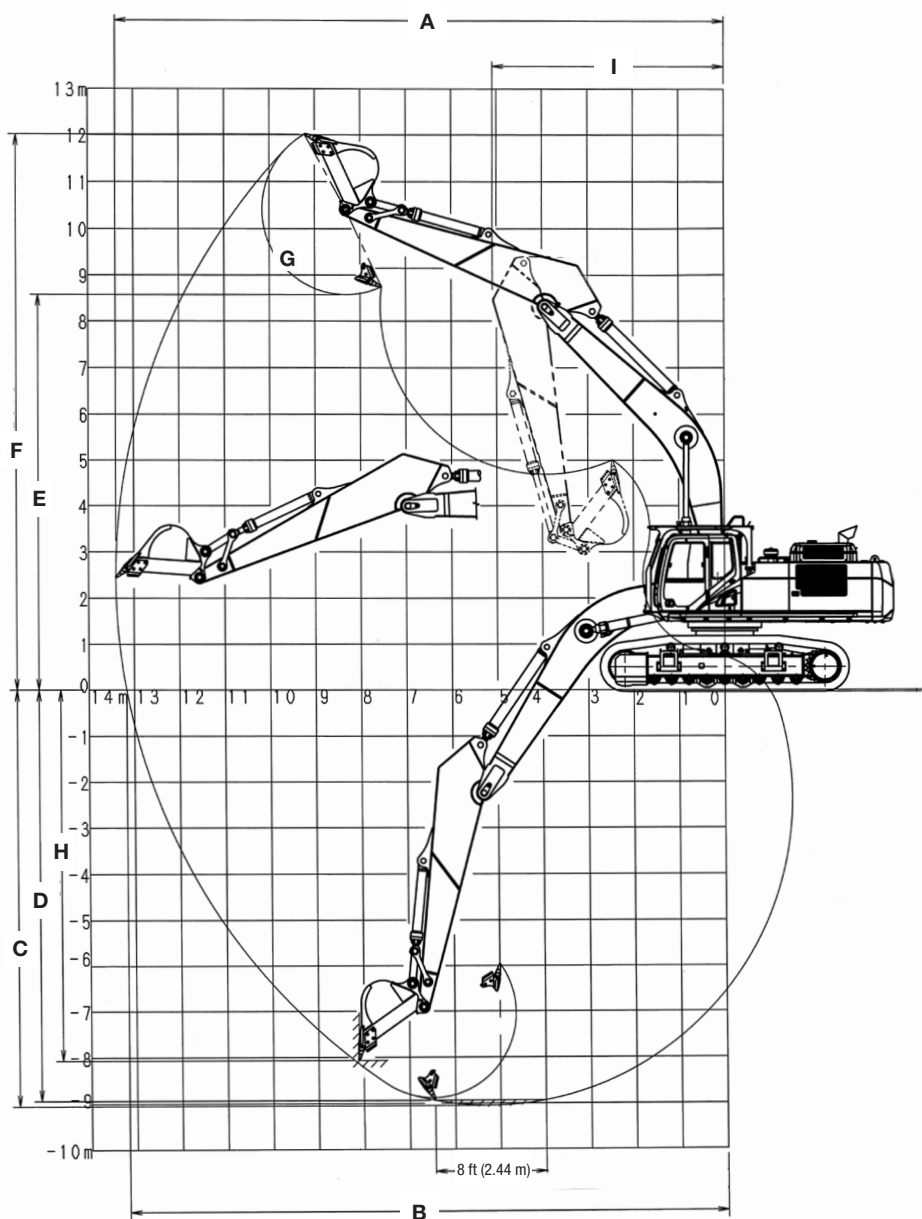
	8 ft 4 in (2.53 m) Arm
A. Overall height – with attachment	12 ft 6 in (3 800 mm)
B. Cab height	10 ft 11 in (3 320 mm)
C. Overall height – top of guardrail	12 ft 0 in (3 650 mm)
D. Overall length – with attachment	38 ft 4 in (11 680 mm)
E. Overall length – without attachment	21 ft 2 in (6 450 mm)
F. Width of upperstructure – without catwalks	10 ft 0 in (3 060 mm)
G. Width of upperstructure – with catwalks	11 ft 9 in (3 590 mm)
H. Track overall length	17 ft 11 in (5 450 mm)
I. Track overall width with 35.4 in (900 mm) shoes	12 ft 0 in (3 650 mm)
J. Track shoe width	2 ft 11 in (900 mm)
K. Center to center – idler to sprocket	14 ft 5 in (4 400 mm)
L. Upperstructure ground clearance	4 ft 4 in (1 330 mm)
M. Minimum ground clearance	1 ft 9 in (535 mm)
N. Rear tail swing radius	12 ft 3 in (3 730 mm)

NOTE: *Machine equipped with 21 ft 6 in (6.55 m) mass excavator boom.

DIMENSIONS – RETRACTABLE UNDERCARRIAGE

	8 ft 4 in (2.53 m) Arm
A. Overall height – with attachment	12 ft 7 in (3 840 mm)
B. Cab height	11 ft 5 in (3 470 mm)
C. Overall height – top of guardrail	12 ft 6 in (3 800 mm)
D. Overall length – with attachment	38 ft 3 in (11 660 mm)
E. Overall length – without attachment	21 ft 2 in (6 450 mm)
F. Width of upperstructure – without catwalks	10 ft 0 in (3 060 mm)
G. Width of upperstructure – with catwalks	11 ft 9 in (3 590 mm)
H. Track overall length	17 ft 11 in (5 450 mm)
I. Track overall width with 35.4 in (900 mm) shoes:	
Extended	12 ft 5 in (3 790 mm)
Retracted	10 ft 10 in (3 290 mm)
J. Track shoe width	2 ft 11 in (900 mm)
K. Center to center – idler to sprocket	14 ft 5 in (4 400 mm)
L. Upperstructure ground clearance	4 ft 10 in (1 480 mm)
M. Minimum ground clearance	2 ft 4 in (720 mm)
N. Rear tail swing radius	12 ft 3 in (3 730 mm)
Operating weight	114,600 lb (52 000 kg)
Ground pressure	8.6 psi (0.59 bar)

NOTE: *Machine equipped with 21 ft 6 in (6.55 m) mass excavator boom.



PERFORMANCE SPECS

FIXED UNDERCARRIAGE

RETRACTABLE UNDERCARRIAGE

	8 ft 4 in (2.53 m) Arm	8 ft 4 in (2.53 m) Arm
A. Maximum dig radius	35 ft 5 in (10 800 mm)	35 ft 5 in (10 800 mm)
B. Dig radius at groundline	34 ft 7 in (10 550 mm)	34 ft 6 in (10 520 mm)
C. Maximum dig depth	21 ft 4 in (6 490 mm)	20 ft 10 in (6 340 mm)
D. Dig depth – 8 ft 0 in (2.44 m) level bottom	20 ft 9 in (6 320 mm)	20 ft 3 in (6 170 mm)
E. Dump height	23 ft 6 in (7 160 mm)	24 ft 0 in (7 310 mm)
F. Maximum reach height	34 ft 7 in (10 550 mm)	35 ft 1 in (10 700 mm)
G. Bucket rotation	160°	160°
H. Maximum vertical wall dig depth	17 ft 4 in (5 290 mm)	16 ft 10 in (5 140 mm)
I. Minimum swing radius	15 ft 1 in (4 590 mm)	15 ft 1 in (4 590 mm)
Arm digging force:		
Standard	55,100 lb (245 kN)	55,100 lb (245 kN)
Power Boost	60,000 lb (267 kN)	60,000 lb (267 kN)
Bucket digging force:		
Standard	64,500 lb (287 kN)	64,500 lb (287 kN)
Power Boost	70,400 lb (313 kN)	70,400 lb (313 kN)

LIFT CAPACITIES

CX500D LC – 21 ft 6 in (6.55 m) Boom and 8 ft 3 in (2.53 m) Arm, ISO capacities, includes bucket weighing 5,300 lb (2 400 kg).

Load (Lift Point Height)	MINIMUM REACH			5 ft (1.5 m)		10 ft (3 m)		15 ft (4.5 m)		20 ft (6 m)		25 ft (7.5 m)		30 ft (9 m)		MAXIMUM REACH		
	@	END	SIDE	END	SIDE	END	SIDE	END	SIDE	END	SIDE	END	SIDE	END	SIDE	@	END	SIDE
+30 ft (9 m)	24 ft 1 in (7.29 m)	12,350 lb* (4 870 kg)*	12,350 lb* (4 870 kg)*									19,150 lb* (7 660 kg)*	19,150 lb* (7 660 kg)*			25 ft 11 in (8.04 m)	15,250 lb* (6 840 kg)*	15,250 lb* (6 840 kg)*
+25 ft (7.5 m)	23 ft 0 in (6.99 m)	11,400 lb* (5 460 kg)*	11,400 lb* (5 460 kg)*									20,200 lb* (9 260 kg)*	20,200 lb* (9 260 kg)*	17,637 lb* (8 000 kg)*	16,358 lb* (7 420 kg)*	29 ft 10 in (9.18 m)	14,350 lb* (6 490 kg)*	14,350 lb* (6 490 kg)*
+20 ft (6 m)	19 ft 6 in (5.81 m)	16,800 lb* (7 700 kg)*	16,800 lb* (7 700 kg)*							21,550 lb* (9 920 kg)*	21,550 lb* (9 920 kg)*	22,200 lb* (10 260 kg)*	21,900 lb* (10 160 kg)*	19,800 lb* (9 090 kg)*	15,700 lb* (7 350 kg)	32 ft 4 in (9.89 m)	14,150 lb* (6 410 kg)*	13,200 lb (5 950 kg)
+15 ft (4.5 m)	9 ft 9 in (3.02 m)	20,800 lb* (9 920 kg)*	20,800 lb* (9 920 kg)*			29,300 lb* (13 290 kg)*	29,300 lb* (13 290 kg)*	37,850 lb* (17 560 kg)*	37,850 lb* (17 560 kg)*	30,100 lb* (13 980 kg)*	30,100 lb* (13 980 kg)*	24,600 lb* (11 360 kg)*	21,300 lb (9 920 kg)	21,000 lb* (9 690 kg)*	15,250 lb (7 110 kg)	33 ft 9 in (10.31 m)	14,250 lb* (6 460 kg)*	11,800 lb (5 340 kg)
+10 ft (3 m)	12 ft 1 in (3.7 m)	18,100 lb* (7 980 kg)*	18,100 lb* (7 980 kg)*					45,550 lb* (21 130 kg)*	45,550 lb* (21 130 kg)*	34,500 lb* (16 000 kg)*	29,150 lb (13 530 kg)	26,850 lb* (12 410 kg)	20,200 lb (9 400 kg)	22,200 lb* (10 250 kg)*	14,650 lb (6 830 kg)	34 ft 4 in (10.47 m)	14,750 lb* (6 690 kg)*	11,150 lb (5 050 kg)
+5 ft (1.5 m)	12 ft 1 in (3.68 m)	19,400 lb* (8 570 kg)*	19,400 lb* (8 570 kg)*					50,950 lb* (23 500 kg)*	42,600 lb (19 780 kg)	37,200 lb* (17 210 kg)*	27,350 lb (12 700 kg)	28,350 lb* (13 120 kg)	19,200 lb (8 930 kg)	22,750 lb* (10 520 kg)*	14,100 lb (6 570 kg)	34 ft 1 in (10.4 m)	15,700 lb* (7 140 kg)*	11,050 lb (5 020 kg)
Groundline	9 ft 8 in (2.95 m)	24,550 lb* (11 130 kg)*	24,550 lb* (11 130 kg)*			25,350 lb* (11 400 kg)*	25,350 lb* (11 400 kg)*	51,850 lb* (23 890 kg)*	41,250 lb (19 170 kg)	37,450 lb* (17 310 kg)*	26,250 lb (12 210 kg)	28,600 lb* (13 230 kg)	18,500 lb (8 610 kg)	22,650 lb* (10 500 kg)*	13,700 lb (6 380 kg)	33 ft 1 in (10.08 m)	17,400 lb* (7 880 kg)*	11,600 lb (5 260 kg)
-5 ft (-1.5 m)	4 ft 11 in (1.5 m)	22,700 lb* (10 230 kg)*	22,700 lb* (10 230 kg)*	25,700 lb* (11 657 kg)*	25,700 lb* (11 657 kg)*	38,650 lb* (17 160 kg)*	38,650 lb* (17 160 kg)*	49,350 lb* (22 760 kg)*	41,950 lb (19 560 kg)	36,400 lb* (16 830 kg)*	26,150 lb (12 160 kg)	27,800 lb* (12 880 kg)	18,300 lb (8 510 kg)	21,050 lb* (9 860 kg)*	13,750 lb (6 380 kg)	31 ft 2 in (9.52 m)	18,850 lb* (8 530 kg)*	12,900 lb (5 830 kg)
-10 ft (-3 m)	5 ft 2 in (1.56 m)	40,450 lb* (17 940 kg)*	40,450 lb* (17 940 kg)*			57,400 lb* (25 350 kg)*	57,400 lb* (25 350 kg)*	43,800 lb* (20 250 kg)*	41,850 lb (19 470 kg)	32,900 lb* (15 260 kg)*	26,600 lb (12 360 kg)	24,500 lb* (11 470 kg)*	18,800 lb (8 720 kg)			28 ft 3 in (8.65 m)	18,100 lb* (8 220 kg)*	15,400 lb (6 940 kg)
-15 ft (-4.5 m)	8 ft 0 in (2.36 m)	49,050 lb* (22 990 kg)*	49,050 lb* (22 990 kg)*			44,250 lb* (20 640 kg)*	44,250 lb* (20 640 kg)*	34,050 lb* (15 920 kg)*	34,050 lb* (15 920 kg)*	25,150 lb* (11 890 kg)*	25,150 lb* (11 890 kg)*					24 ft 0 in (7.38 m)	16,050 lb* (7 320 kg)*	16,050 lb* (7 320 kg)*

CX500D RTC – 21 ft 6 in (6.55 m) Boom and 8 ft 3 in (2.53 m) Arm, ISO capacities, includes bucket weighing 5,300 lb (2 400 kg).

Load (Lift Point Height)	MINIMUM REACH			5 ft (1.5 m)		10 ft (3 m)		15 ft (4.5 m)		20 ft (6 m)		25 ft (7.5 m)		30 ft (9 m)		MAXIMUM REACH		
	@	END	SIDE	END	SIDE	END	SIDE	END	SIDE	END	SIDE	END	SIDE	END	SIDE	@	END	SIDE
+30 ft (9 m)	24 ft 1 in (7.29 m)	12,350 lb* (4 870 kg)*	12,350 lb* (4 870 kg)*									19,150 lb* (7 660 kg)*	19,150 lb* (7 660 kg)*			25 ft 11 in (8.04 m)	15,250 lb* (6 840 kg)*	15,250 lb* (6 840 kg)*
+25 ft (7.5 m)	23 ft 0 in (6.99 m)	11,400 lb* (5 460 kg)*	11,400 lb* (5 460 kg)*									20,200 lb* (9 260 kg)*	20,200 lb* (9 260 kg)*	17,637 lb* (8 000 kg)*	17,637 lb* (8 000 kg)*	29 ft 10 in (9.18 m)	14,350 lb* (6 490 kg)*	14,350 lb* (6 490 kg)*
+20 ft (6 m)	19 ft 6 in (5.81 m)	16,800 lb* (7 700 kg)*	16,800 lb* (7 700 kg)*							21,550 lb* (9 920 kg)*	21,550 lb* (9 920 kg)*	22,200 lb* (10 260 kg)*	22,200 lb* (10 260 kg)*	19,800 lb* (9 090 kg)*	17,050 lb (7 970 kg)	32 ft 4 in (9.89 m)	14,150 lb* (6 410 kg)*	14,150 lb* (6 410 kg)*
+15 ft (4.5 m)	9 ft 9 in (3.02 m)	20,800 lb* (9 920 kg)*	20,800 lb* (9 920 kg)*			29,300 lb* (13 290 kg)*	29,300 lb* (13 290 kg)*	37,850 lb* (17 560 kg)*	37,850 lb* (17 560 kg)*	30,100 lb* (13 980 kg)*	30,100 lb* (13 980 kg)*	24,600 lb* (11 360 kg)*	23,050 lb (10 730 kg)	21,000 lb* (9 690 kg)*	16,600 lb (7 740 kg)	33 ft 9 in (10.31 m)	14,250 lb* (6 460 kg)*	12,950 lb (5 860 kg)
+10 ft (3 m)	12 ft 1 in (3.7 m)	18,100 lb* (7 980 kg)*	18,100 lb* (7 980 kg)*					45,550 lb* (21 130 kg)*	45,550 lb* (21 130 kg)*	34,500 lb* (16 000 kg)*	31,600 lb (14 680 kg)	26,850 lb* (12 410 kg)	21,950 lb (10 210 kg)	22,200 lb* (10 250 kg)*	16,000 lb (7 450 kg)	34 ft 4 in (10.47 m)	14,750 lb* (6 690 kg)*	12,250 lb (5 550 kg)
+5 ft (1.5 m)	12 ft 1 in (3.68 m)	19,400 lb* (8 570 kg)*	19,400 lb* (8 570 kg)*					50,950 lb* (23 500 kg)*	46,600 lb (21 650 kg)	37,200 lb* (17 210 kg)*	29,800 lb (13 840 kg)	28,350 lb* (13 120 kg)	20,950 lb (9 740 kg)	22,750 lb* (10 520 kg)*	15,400 lb (7 190 kg)	34 ft 1 in (10.4 m)	15,700 lb* (7 140 kg)*	12,200 lb (5 530 kg)
Groundline	9 ft 8 in (2.95 m)	24,550 lb* (11 130 kg)*	24,550 lb* (11 130 kg)*			25,350 lb* (11 400 kg)*	25,350 lb* (11 400 kg)*	51,850 lb* (23 890 kg)*	45,150 lb (20 990 kg)	37,450 lb* (17 310 kg)*	28,700 lb (13 340 kg)	28,600 lb* (13 230 kg)	20,250 lb (9 410 kg)	22,650 lb (10 500 kg)	15,050 lb (7 000 kg)	33 ft 1 in (10.08 m)	17,400 lb* (7 880 kg)*	12,750 lb (5 790 kg)
-5 ft (-1.5 m)	4 ft 11 in (1.5 m)	22,700 lb* (10 230 kg)*	22,700 lb* (10 230 kg)*	25,700 lb* (11 657 kg)*	25,700 lb* (11 657 kg)*	38,650 lb* (17 160 kg)*	38,650 lb* (17 160 kg)*	49,350 lb* (22 760 kg)*	45,750 lb (21 300 kg)	36,400 lb* (16 830 kg)*	28,550 lb (13 280 kg)	27,800 lb* (12 880 kg)	20,000 lb (9 310 kg)	21,050 lb* (9 860 kg)*	15,100 lb (7 000 kg)	31 ft 2 in (9.52 m)	18,850 lb* (8 530 kg)*	14,150 lb (6 400 kg)
-10 ft (-3 m)	5 ft 2 in (1.56 m)	40,450 lb* (17 940 kg)*	40,450 lb* (17 940 kg)*			57,400 lb* (25 350 kg)*	57,400 lb* (25 350 kg)*	43,800 lb* (20 250 kg)*	43,800 lb* (20 250 kg)*	32,900 lb* (15 260 kg)*	28,950 lb (13 470 kg)	24,500 lb* (11 470 kg)*	20,450 lb (9 510 kg)			28 ft 3 in (8.65 m)	18,100 lb* (8 220 kg)*	16,850 lb (7 600 kg)
-15 ft (-4.5 m)	8 ft 0 in (2.36 m)	49,050 lb* (22 990 kg)*	49,050 lb* (22 990 kg)*			44,250 lb* (20 640 kg)*	44,250 lb* (20 640 kg)*	34,050 lb* (15 920 kg)*	34,050 lb* (15 920 kg)*	25,150 lb* (11 890 kg)*	25,150 lb* (11 890 kg)*					24 ft 0 in (7.38 m)	16,050 lb* (7 320 kg)*	16,050 lb* (7 320 kg)*

NOTE: *Following number indicates hydraulic capacity

STANDARD EQUIPMENT

ENGINE

Isuzu AQ-6UZ1X
Tier 4 Final Certified
Selective Catalytic Reduction – SCR
Diesel Oxidation Catalyst – DOC
Cooled Exhaust Gas Recirculation – CEGR
EGR Coolers
Six-cylinder turbo-charged diesel
VGT turbocharger
Electronic fuel injection
High pressure common rail system
Neutral safety start
Auto-engine warm up
Glow-plug pre-heat
Fuel Economy Assist System – FEA
Engine Protection Feature – EPF
Dual-stage fuel filtration
Dual element air filter
Remote oil filter
Drain for fuel tank
Remote engine oil drain
24 Volt system
Engine oil sample port
Battery disconnect switch
Air pre-cleaner – Cyclone
High ambient temperature cooling package
Emergency engine stop
External Fuel and DEF gauges
Fan housing
Fuel cooler
Fuel filter restriction indicator
Fuel shut-off valve
Idle start
Radiator, oil cooler,
intercooler – protective screen

FUEL ECONOMY SYSTEMS

Engine Idle/Fuel Economy System:
Auto-idle
One-touch idle
Auto-idle shut-down
BEC – Boom Economy Control
AEC – Auto Economy Control
SWC – Swing Relief Control
SSC – Spool Stroke Control

HYDRAULICS

Auto power boost
Auto swing priority
Arm speed assistance – 2 pump flow
Auxiliary flow control
Auxiliary valve
Boom speed assistance – 2 pump flow
Bucket curl assist
Control levers pre-wired for
auxiliary hydraulics
Electronically controlled hydraulic pumps
Holding valve – Boom and Arm
Fire wall
Hydraulic filter restriction indicator
Neutral pump de-stroke
Oil cooler

Power save
Pump stand-by pressure
Auto travel speed change
Selectable work modes
Free swing
Hydraulic oil sample port
Control pattern selector
Pre-set auxiliary pump settings
Auxiliary valve
SAHR brake

UPPER STRUCTURE

ISO mirrors – 3
Viscous Cab Mounts – fluid and spring
Upper mounted work light – 70 watt
Swivel guard belly pan
Center cover – over main CV
Fuel tank belly pan
Handrail – RH access
ISO guard rails
Lifting eyes for counterweight
Lockable fuel cap, service doors and toolbox

ATTACHMENTS

Boom – 21 ft 6 in (6.55 m)
Arm – 8 ft 4 in (2.53 m)
Heavy-duty bucket linkage
Boom mounted work light – 70 watt
Auxiliary pipe brackets
Centralized grease fittings
Attachment cushion valve
Arm and boom regeneration
Bucket anti-clatter device
Chrome pins
Easy Maintenance System (EMS) bushings
Teardrop pin retention keepers

OPERATOR ENVIRONMENT

ROPS protection
FOPS cab top guard – Level 1
Pressurized cab
Face vent
Cab lights – 2
Interior dome light
One-touch lock front window
One piece window – right
Safety glass windows
Gate lock hydraulic activation
Emergency exit and hammer
Clear polycarbonate roof window
with sunshade
AC/heat/defrost with auto climate control
LED Color monitor – 7 in (180 mm)
26 selectable languages for monitor
On-board diagnostic system
10 programmable attachments settings on
monitor – 5 single flow, 5 dual flow
Seat belt – 3 in (76 mm)
Heated high-back cloth seat with air
suspension and 65° tilt adjustment
Sliding seat – 3.54 in (90 mm)

Adjustable armrests
Tilting consoles – 4-position
Sliding cockpit – 3.15 in (80 mm)
Low-effort joystick controls
Controls pre-wired for auxiliary
Single pedal travel
Straight travel
AM/FM radio with antenna, 2 speakers and
Bluetooth capabilities
Aux-in port for personal electronics
Radio mute switch – joystick
Rear-view camera
Side-view camera
Anti-theft system – start code system
Rubber floor mat
12 Volt electric outlet
24 Volt cigarette lighter
Windshield wiper/washer
Cup holder
Storage compartments
Warm/cool storage compartment
Travel alarm with cancel switch
Ignition keys
One key start & lock-up
Cab filter – external
Cab handrails
Operator's manual

UNDERCARRIAGE

Long undercarriage
35.4 in (900 mm) steel shoes,
triple semi-grouser
Full overlap turntable bearing tub
Double track chain guides
Hydraulic track adjustment
Sealed link chain
Steps
Carbody belly pan – swivel guard
X-pattern carbody
Lashing points – tie downs

TELEMATICS

CASE SiteWatch™ Telematics – includes
hardware and a 3-yr Advanced
data subscription

OPTIONAL EQUIPMENT

ENGINE

Refueling pump

HYDRAULICS

Auxiliary hydraulics:

Single acting/joystick activated

Double acting/joystick activated – thumb

Multi-function with electronic pressure control/joystick activated with electronic proportional controls

Secondary low-flow/joystick activated Proportional hydraulic controls

Hose Burst Check Valve – HBCV

Hydraulic CWT Removal Device

ATTACHMENTS

Heavy-duty arm – 8 ft 4 in (2.53 m)

Tools:

Heavy-duty/Extreme-duty/Ditching

Buckets; Hammers; Thumbs;

Compaction plates.

Load holding control

UPPER STRUCTURE

Rubber bumper guard – order through Service Parts

Catwalk – left and right side

UNDERCARRIAGE

29.5 in (750 mm) steel shoes, triple semi-grouser

Full Length Track Chain Guards

OPERATOR ENVIRONMENT

FOPS cab top guard – Level 2

Front grill guard – 2 x 2 in (50.8 x 50.8 mm) screen mesh

Front rock guard – vertical bars

Two piece/OPG 1

Front rock guard – vertical bars

One piece/OPG 2

Vandal guard (front window) with common key

Sun visor

LED Package:

Includes 1 Side view camera and 6 LED

Lights – 2 front cab mounted, 2 rear

mounted and 1 mounted on each side

CaseCE.com

©2018 CNH Industrial America LLC. All rights reserved. CASE is a trademark registered in the United States and many other countries, owned by or licensed to CNH Industrial N.V., its subsidiaries or affiliates. CNH Industrial Capital is a trademark in the United States and many other countries, owned by or licensed to CNH Industrial N.V., its subsidiaries or affiliates. Printed in U.S.A. Contains 10% post-consumer fiber.

IMPORTANT: CASE Construction Equipment Inc. reserves the right to change these specifications without notice and without incurring any obligation relating to such change. Availability of some models and equipment builds vary according to the country in which the equipment is used. The illustrations and text may include optional equipment and accessories and may not include all standard equipment. Your CASE dealer/distributor will be able to give you details of the products and their specifications available in your area.



CASE Construction Equipment is biodiesel-friendly. NOTE: All engines meet current EPA emissions regulations. All specifications are stated in accordance with SAE Standards or Recommended Practices, where applicable.



Always read the Operator's Manual before operating any equipment. Inspect equipment before using it, and be sure it is operating properly. Follow the product safety signs and use any safety features provided.

Form No. CCE201812CX500D

Replaces Form No. CCE201511CX500D

CX500D

6 of 6