

Arrow Board 360° 25 Lamp Model # AT254896WT

Features

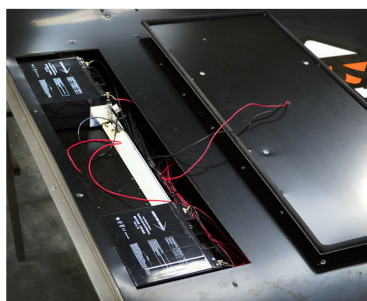
- ▶ 25 Super Bright LED Lamps
- ▶ Rotates 360°
- ▶ Jack on Every Corner + Tongue Jack
- ▶ 15" Tires
- ▶ Solar-Powered
- ▶ Maintenance-Free Batteries
- ▶ Concealed Batteries
- ▶ Removable Tongue
- ▶ Auto Dimming
- ▶ Easy to Operate and Maintain
- ▶ Powder Coat Paint

Optional Remotes Available The K&K Trailer-Mounted Arrow Board has a standard built-in controller that is located on the lower left corner of the panel face. However, optional wireless or wired remotes are available for easy operation and mode selection.



Concealed Battery Compartment

The K&K 2017 Arrow Board Trailer is a new, sleek design. The newly designed and easily accessible battery compartment neatly houses the batteries inside the arrow board panel itself. This design creates a clean, smooth look while deterring theft. An addition, a second solar panel mounted on the back of the panel allows the batteries to charge while the arrow board is in the transportation configuration.



Corner Jack System + Tongue

K&K's Arrow Board Trailers utilize (1) one tongue jack and (4) four corner jack system with side winding jacks to protect knuckles and to make it easier for personnel to setup and leave the unit in the field quickly and safely.

Arrow Board Trailer - General Specifications

Model # AT254896WT

Trailer

Width: 68"

Length with Tongue: 104"

Length without Tongue: 57"

Transport Height: 87"

Salt Spray: 1,000 hours

Paint: Powder Coat

Main Frame: 2" x 2" x 1/8" tubular steel

Wheels: 15"

Axle: 1,500 lbs leaf spring

Fenders: 16 gauge

Jacks: (4) adjustable corner jacks plus (1) one adjustable tongue jack

Hitch: 2" ball, 1/4" safety chains with hooks

Arrow Panel Lift: Gear ratio: 4:1, Load Capacity: 1200 lbs., Reel Capacity: 58 ft.

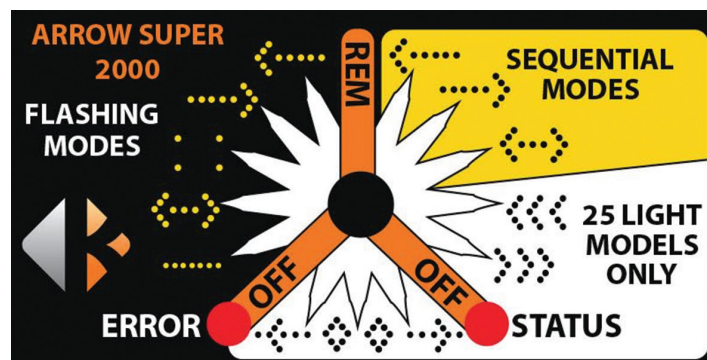
Battery Compartment: Conceals batteries inside arrow board panel

Controller

Battery Status Indicator Light: Indicates if solar is charging and progress. Multi-color LED indicates the battery condition (low, fair, or good).

Error LED: Indicates low voltage disconnect, low voltage disconnect 2, or over voltage condition

Mode Selector: Capable of 8 modes in 15 lamp configuration or 13 modes in 25 light configuration as shown below.



Sign Display

Construction: Extruded aluminum frame 48" x 96"

Cross Members: Extruded aluminum

Paint: Black powder coat paint

Salt Spray: 1000 hours

UV Resistant: 500 hours

Seal: Weather resistant

Length: 96"

Width: 48"

Depth: 3 3/8"

Visibility: 4800 feet

Raising and Lowering of Display: Winch

Flash Rate: 30-40 flashes per minute

LED's: 25 yellow/amber Par 46 LED's

Visor: 360 degree plastic high impact

Rotation: 360 degrees

Power and Charging

Batteries: (2) 18 amp batteries

Solar: 40 watts of solar power

On-board Diagnostics to Monitor: Solar, battery, and load

Regulator: Built-in Controller with low voltage & high voltage disconnect.

Options

- ▶ Locking Lug Nuts
- ▶ 3-Mode Indicator Lights
- ▶ 7-Way Round Trailer Plug
- ▶ Pintle Ring or Bulldog Hitch
- ▶ Battery Charger
- ▶ Diamond Plate Floor
- ▶ Hour Meter
- ▶ Tongue Jack
- ▶ Custom Paint
- ▶ Tow Plate
- ▶ Wired Remote
- ▶ Wireless Remote
- ▶ Other options available



888.414.3003 toll-free • 662.566.2025 phone • 662.566.7123 fax
www.k-systems.com • sales@k-systems.com