

# LIGHT DUTY SERIES

## GPC X1-LDF

# MAXON®

### Standard Equipment

- 0.2" flat main control
- Quiet power pack with thermo switch
- Automatic tilt-up and tilt-down at ground level
- Maintenance-free bushings
- Warning flashlights on platform corners
- Bridge plate
- 3 button handheld control
- Bolt-on Installation brackets
- Aluminum platform with dual cart stops



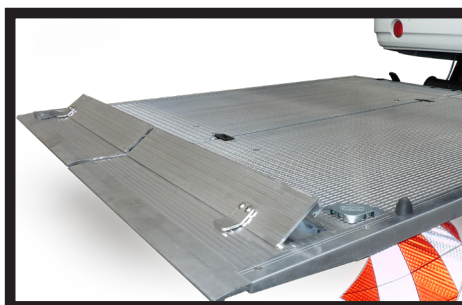
### New Generation Control

Extremely flat (0.2") control module suitable for mounting on the van body. Extra robust and waterproof



### Bolt-On Install

Pre-drilled mount plates bolt right to the vehicle chassis



### Aluminum platform with dual cart stops

Each one of the platform sections features an independent cart stop

**Distributed by:**

### Patented X1 Technology

Patented X1 technology (only 1 lifting and one tilting cylinder needed) enables to build the lightest cargo van gate solution with the lowest maintenance costs.

M-215-0419



Maxon Lift Corp. 11921 Slauson Ave., Santa Fe Springs, CA 90670  
800.227.4116 Fax 888.771.7713, [www.maxonlift.com](http://www.maxonlift.com)

# LIGHT DUTY SERIES

## C2 Stakebed & Van Body

**MAXON®**

### C2 standard features

- Dual hydraulic lifting cylinders
- Maintenance-free components
- Protected / recessed main control with time-out feature
- Steel or aluminum platforms
- Fully-enclosed hydraulic system
- Patent Pending Pre-punched Holes for Camera/Sensors
- Gravity down only

### Optional features

- Light Kits
- Remote Pendant Control
- Rubber Platform Protection Bumpers
- Tire Rack Kit



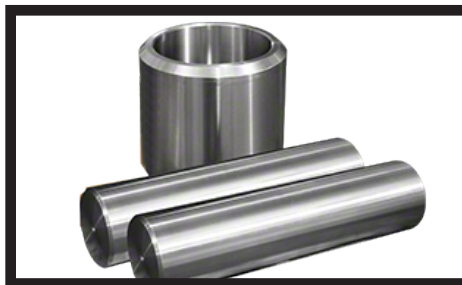
### Enclosed Pump & Motor Assembly

The C2 pump and motor assembly is fully enclosed and shielded from the elements.



### Main Control with Time-Out Feature

A timed toggle control prevents unauthorized use. It automatically deactivates 90 seconds after operation.



### Maintenance Free Pins & Bushings

Maintenance free pins and bushings allow for years of maintenance free service.



### Power Cable with Full Length Ground

The dedicated ground cable helps to get the maximum lifespan out of the vehicles battery.

**Distributed by:**

M-213-0520



Maxon Lift Corp. 11921 Slauson Ave., Santa Fe Springs, CA 90670  
800.227.4116 Fax 888.771.7713, [www.maxonlift.com](http://www.maxonlift.com)

# LIGHT DUTY SERIES

## C2 Service Body

**MAXON®**

### C2 standard features

- Dual hydraulic lifting cylinders
- Maintenance-free components
- Protected / recessed main control with time-out feature
- Steel or aluminum platforms
- Fully-enclosed hydraulic system
- Patent Pending Pre-punched Holes for Camera/Sensors
- Gravity down only

### Optional features

- Light Kits
- Remote Pendant Control
- Rubber Platform Protection Bumpers
- Tire Rack Kit



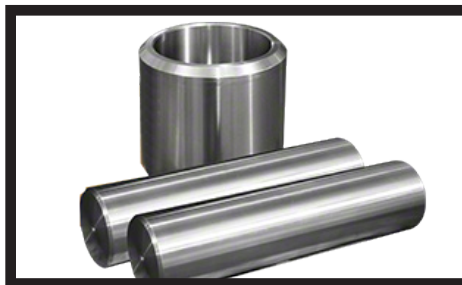
### Enclosed Pump & Motor Assembly

The C2 pump and motor assembly is fully enclosed and shielded from the elements.



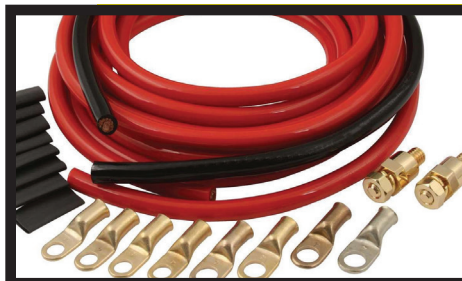
### Main Control with Time-Out Feature

A timed toggle control prevents unauthorized use. It automatically deactivates 90 seconds after operation.



### Maintenance Free Pins & Bushings

Maintenance free pins and bushings allow for years of maintenance free service.



### Power Cable with Full Length Ground

The dedicated ground cable helps to get the maximum lifespan out of the vehicles battery.

**Distributed by:**

M-212-0220



Maxon Lift Corp. 11921 Slauson Ave., Santa Fe Springs, CA 90670  
800.227.4116 Fax 888.771.7713, [www.maxonlift.com](http://www.maxonlift.com)

# LIGHT DUTY SERIES

## C2 Pickup

**MAXON®**

### C2 standard features

- Dual hydraulic lifting cylinders
- Maintenance-free components
- Protected / recessed main control with time-out feature
- Steel or aluminum platforms
- Fully-enclosed hydraulic system
- Patent Pending Pre-punched Holes for Camera/Sensors

### Optional features

- Light Kits
- Remote Pendant Control
- Rubber Platform Protection Bumpers
- Tire Rack Kit



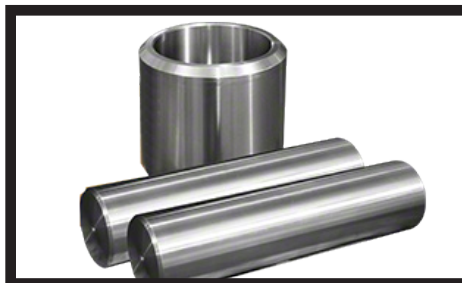
### Enclosed Pump & Motor Assembly

The C2 pump and motor assembly is fully enclosed and shielded from the elements.



### Main Control with Time-Out Feature

A timed toggle control prevents unauthorized use. It automatically deactivates 90 seconds after operation.



### Maintenance Free Pins & Bushings

Maintenance free pins and bushings allow for years of maintenance free service.



### Power Cable with Full Length Ground

The dedicated ground cable helps to get the maximum lifespan out of the vehicles battery.

**Distributed by:**

M-211-0220



Maxon Lift Corp. 11921 Slauson Ave., Santa Fe Springs, CA 90670  
800.227.4116 Fax 888.771.7713, [www.maxonlift.com](http://www.maxonlift.com)