



SPECIFICATIONS			
Model:	SM14 Flat Top Lift SM014 / Open Front	AR14 Alignment Lift AR014 / Open Front	
Max. Wheelbase*	S 158 1/2" (4026mm)	S 158 1/2" (4026mm)	
	L 182 1/2" (4636mm)	L 192 1/2" (4890mm)	
	EL 206 1/2" (5245mm)	EL 212 1/2" (5397mm)	
A. Rise	73 3/4" (1873mm)	73 3/4" (1873mm)	
B. Length Overall†	S 18' 9" (5715mm)	S 18' 9" (5715mm)	
	L 20' 9" (6325mm)	L 21' 7" (6579mm)	
	EL 22' 9" (6934mm)	EL 23' 8" (7214mm)	
C. Width Overall**†	11' 1" (3378mm)	11' 1" (3378mm)	
D. Inside of Columns**	117 1/2" (2985mm)	117 1/2" (2985mm)	
E. Between Front and Rear Columns	S 171 7/8" (4366mm)	S 171 7/8" (4366mm)	
	L 195 7/8" (4975mm)	L 205 7/8" (5229mm)	
	EL 219 7/8" (5585mm)	EL 225 7/8" (5737mm)	
F. Height of Columns	6' 10 1/8" (2086mm)	6' 10 1/8" (2086mm)	
G. Width of Runways	20" (508mm)	20" (508mm)	
H. Height of Runways	7" (178mm)	7" (178mm)	
I. Width Between Runways	43" (1092mm)	43" (1092mm)	
J. Front of Runway to Center of Radius Gauge	N/A	Adj. 16" to 20" (406-508mm)	
K. Length of Runways	S 169 1/2" (4305mm)	S 169 1/2" (4305mm)	
	L 193 1/2" (4915mm)	L 193 1/2" (4915mm)	
	EL 217 1/2" (5525mm)	EL 217 1/2" (5525mm)	
Lifting Capacity	14,000 lbs. (6350kg)	14,000 lbs. (6350kg)	
Time of Full Rise	35 seconds	35 seconds	
Time of Descent	18 seconds	18 seconds	
Min. Bay Size	S 15' x 23' (4572 x 7010mm)	S 15' x 23' (4572 x 7010mm)	
	L 15' x 25' (4572 x 7620mm)	L 15' x 26' (4572 x 7925mm)	
	EL 15' x 27' (4572 x 8230mm)	EL 15' x 28' (4572 x 8534mm)	

ALIGNMENT

	AR14 Alignment Lift AR014 / Open Front
Maximum Two Wheel Alignment*	S 146" (3708mm)
	L 181" (4597mm)
	EL 201" (5105mm)
Maximum Four Wheel Alignment*	S 144" (3658mm)
	L 166" (4216mm)
	EL 166" (4216mm)
Minimum Four Wheel Alignment*	S 65" (1651mm)
	L 87" (2209mm)
	EL 87" (2209mm)

S = Shorter length L = Standard length

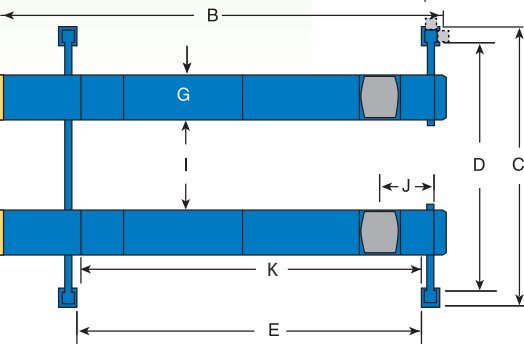
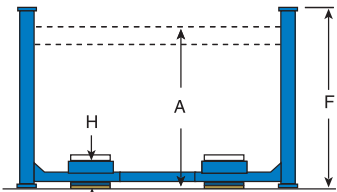
EL = Extended length

* Maximum wheelbase is based on a tire diameter of 29 1/2" (749mm).

** Narrow bay models available. Consult factory for min. bay size before ordering.

† Length overall is 10 1/2" longer with power unit mounted on the front of the column. Width is 10 1/2" wider with power unit mounted on the side of the column.

Standard color of SHOCKWAVE power unit cabinets match chosen lift color - blue, red, and black.



Optional lift accessories

Rolling Jacks

Increase your service opportunities by lifting front, rear or all wheels off the runways for brake, tire, suspension and two or four-wheel alignment work.



#RJ7000Y
7,000 lbs. capacity
4,500 lbs. capacity also available

Internal Airline

Internal airline connections let two rolling jacks operate simultaneously.



#FC5760-14

Ramp Kits

- Allows for drive-thru capability
- Extended length also available.



#S100030
Standard length ramps for drive-thru bay

Oil Drain Pan

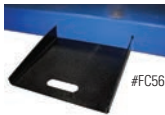
Includes splash guard, drain valve and dust cap. An eight foot oil drain hose with quick connect fitting is also available.



#FC5967 / 30 gallon

Removable Work Steps

Fits 14K four-post lifts with slots on sides of runways as shown.



#FC5663BK

4 Post LED Lighting Kit

Attach the four light wands to runways for effective, efficient lighting where you need it.



#FA5700



SHOCKWAVETM EQUIPPED
LIGHT DUTY FOUR POST
DRIVE-ON LIFTS



ROTARY LIFT
THE WORLD'S MOST TRUSTED LIFT



Shown: AR014U001 14,000 lbs. capacity four-post alignment lift

www.rotarylif.com



Rotary World Headquarters
2700 Lanier Drive
Madison, IN 47250, USA
www.rotarylif.com

Contact Information

Sales: p 800.640.5438
f 800.578.5438
e userlink@rotarylif.com
Tech. Support: p 800.445.5438
f 800.822.6502
e userlink@rotarylif.com



Contract Holder
FSS Contract GS07F863D



Li# Rotary_4POST14_SW_4Pg Cutsheet_2014.06
©2014 VEHICLE SERVICE GROUP™, Printed in U.S.A., All Rights Reserved.
Unless otherwise indicated, ROTARY LIFT, VEHICLE SERVICE GROUP™, DOVER
and all other trademarks are property of Dover Corporation and its affiliates.

Dual function Sentinel Lock™ system (U.S. Patent No. 6,446,757)

MAKE YOUR RUNWAY LIFT 2X FASTER! SUPERCHARGE YOUR DRIVE-ON LIFT WITH SHOCKWAVE™ SHOCKWAVE-Equipped Lifts Feature:



- 2X Faster rise and descent than standard 4-post lift*
- Patent pending DC power
 - Two Series 24 Batteries reduce installation and operating costs
 - Operates during loss of facility power

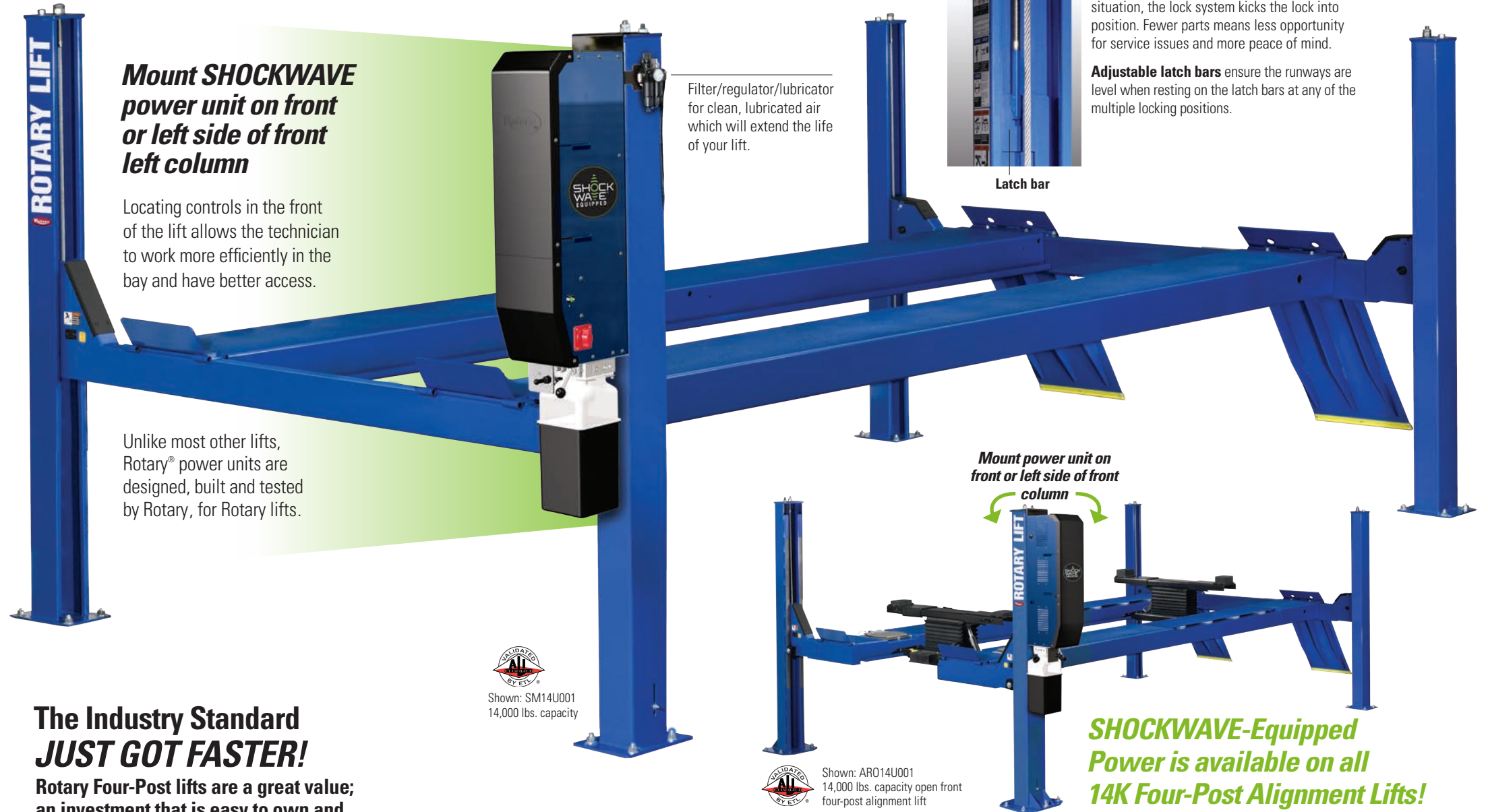
Shockwave™'s DC power system gives you lower cost and more reliable operation while using two standard Group 24 batteries**. Shockwave™'s built in battery charger uses 110v power, eliminating the need for expensive 220v wiring - an installation savings of 80% or more!

- ✓ Accelerate your productivity immediately!
- ✓ Increase your number of service orders per bay!
- ✓ Added productivity equals EXTRA PROFIT!

This industry changing technology is only available from Rotary, the world's most trusted lift.



*Actual rise and descent times may vary depending on weight of the vehicle. **Batteries not included.



The Industry Standard JUST GOT FASTER!

Rotary Four-Post lifts are a great value; an investment that is easy to own and operate because they are engineered to provide years of trouble-free service.

Take advantage of the quick set-up for undercarriage repairs and wheel service maintenance. This durable four-post lift keeps your shop efficient and productive. We've applied our nearly 90 years of lift design and building experience to offer you the most user-friendly, reliable and productive lift of it's kind.



Shown: SM14U001
14,000 lbs. capacity



Shown: AR014U001
14,000 lbs. capacity open front four-post alignment lift

Rotary DESIGN ADVANTAGE

SHOCKWAVE Four-Post PRODUCTIVITY & PERFORMANCE

1. PATENTED LOCKING SYSTEM
2. PATENT PENDING DC POWER - PROVIDES 2X SPEED
3. INEXPENSIVE DAILY OPERATION
4. THIRD-PARTY ETL GOLD CERTIFIED

Industry leading features:

- 14,000 lb. capacity
- Cylinder located under the runway eliminating door and mirror damage
- Single point lift operation
- 1/2" steel cables for greater capacity
- Air operated lock release
- Air Filter / Regulator / Lubricator
- Multiple wheelbase range
- Adjustable lock ladders allow for expansion from general service lift to alignment lift
- 20" single piece runway with formed tracks for rolling jacks
- Automatic ramp chocks engage when lift is raised - protective strips on ramp prevent floor gouging
- ALI Certified

SHOCKWAVE



2X faster rise and descent



Spotline™ motion activated laser helps spot vehicles the first time



DC power reduces operating cost



More productivity makes happier technicians