



# TIRE CHANGERS

ROTARY WHEEL SERVICE EQUIPMENT

Dependable  
Performance  
Durable  
INSPECT  
EFFICIENT  
Analyze  
Patented  
Easier  
Versatile  
TECHNOLOGY  
CARS  
Innovative  
WHEELHOUSE  
QUALITY  
CHANGE  
ACCURATE  
Commercial  
Trusted  
HEAVY DUTY  
Passenger  
FASTER  
Simple  
Reliable  
PRODUCTIVE  
TRUCKS  
BALANCE  
ALIGN

# LEADER



[www.rotarywheelservice.com](http://www.rotarywheelservice.com)

# R1150

## LEVERLESS

### TRUE LEVERLESS TIRE CHANGER WITH VARIABLE SPEED CONTROL

**No-lever action, hub mounting changer requires no tire tools and no metal to metal contact.**

**Simple to operate, simple to maintain using 2 button EASY CONTROLS.**

Powerful changer uses a 220v inverter motor, so torque is always available when needed.

### 0-15 RPM VARIABLE SPEED CONTROL

The motor, which is equipped with an exclusive inverter that regulates rotational speed, offers the operator customizable speed control. Rotational speed slows as the stress on the bead increases, avoiding any damage to the tire.

### FEATURES

- Quick locking wheel centering adapter
- Locking system suitable for reverse rims
- Full range of bead clamps and adapters

### Patented AUTO-TOUCH™ FUNCTION

**Service the most challenging tire and wheel combinations - low profiles, runflats, exotic rims and other specialty jobs.**

Change difficult light truck combinations such as 17.5" and 19.5" super duty wheels using optional centering adapter VSG1000A15.



### EASY ROLLER BEAD-BREAKING FEATURE

- Bead-breaking in correct position
- Easy rotation of the roller
- Automatic roller side-movement
- Memorized position for bead breaking of lower side



### TIRE DEMOUNTING

- The tool enters between bead and rim
- Levering on the rim, the tool pulls up the bead, minimizing tire stress



### TIRE MOUNTING

Safe and easy mounting with plastic tool, roller and rotating helper PLUS93

### OPTIONAL ACCESSORIES

#### VSG1000A87

Universal flange for reverse, and Chrome Clad wheels

#### VSG1000A102

5 stud kit 110mm long for reverse rims. Used on VSG1000A87

#### VSG1000A123

Plastic/Chrome Clad adapter for clamping wheels through locking holes

#### VSG1000A152

Light truck adapter for centering locking tire changer - 19.5" wheels

#### VSG1000A118

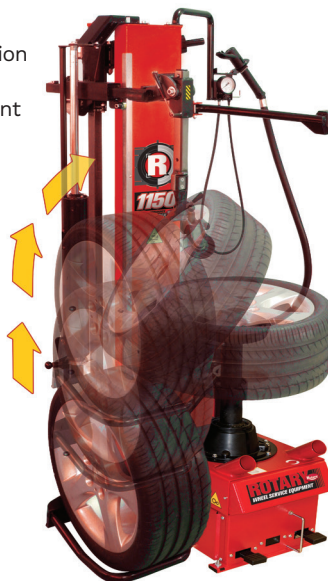
Match mounting roller

#### VSG1000A86

Reposition-able mirror

#### VSG1000A135

Bead breaker



WHEEL LIFT



### EASY CONTROLS

Quick pedal operated inflation with gauge and balancing valve. Easy to use position roller with up / down controls.



### EQUIPPED WITH

- Standard inflator / side bead blaster
- Pneumatic wheel lift
- Double cone
- Reverse protection
- Tire paste lubricant and brush

TECHNICAL DATA	R1150
Handle wheels from*	10"-26" / 12"-28" / 14"-30"
Maximum tire width	15"
Maximum tire diameter	45"
Bead breaker power (each arm)	2,645 Ft/Lbs
Bead breaker movement	Automatic
Rotation motor	2Hp / 1.5 Kw inverter motor
Recommended air supply	115-145 PSI / 8-10 bar
Power supply**	220v / 10 / 60 Hz

\* 3-position base can be adjusted to fit larger wheels up to 30"

\*\*SHIPS WITH NEMA L6 - 20 PLUG



SCAN CODE FOR  
PRODUCT VIDEO

# R247D.CL

## CENTER LOCKING

### HIGH VOLUME SWING ARM CHANGER

Center post design and productivity features make this the go-to pro performance swing arm tire changer for the busiest tire centers.

Easy to use center post mounting increases productivity and reduces the risk of wheel damage. Comes standard with metal and plastic mounting and demounting heads.

#### FEATURES

- Quick locking wheel centering system
- Integrated wheel lift
- Lower bead lifting roller
- Pneumatic top bead pressing tool
- Hand controlled side bead breaker
- 220v drive motor provides needed torque
- Storage cabinet
- Tire paste lubricant and brush

#### OPTIONAL ACCESSORIES

##### VSG1000A87

Universal flange for reverse, and Chrome Clad wheels

##### VSG1000A102

5 stud kit 110mm long for reverse rims. Used with VSG1000A87

##### VSG1000A11

Bead tire lever

##### VSG1000A18

Bead pushing roller

##### VSG1000A123

Plastic/Chrome Clad adapter for clamping wheels through locking holes

##### VSG1000A152

Light truck adapter for centering locking tire changer - 19.5" wheels



### VARIABLE SPEED CONTROL INVERTER

Regulates rotational speed by slowing as the stress on the bead increases avoiding any damage to the tire. The double-acting bead breaker cylinder is designed to work on low-profile and large steel or alloy rims.



INTEGRATED WHEEL LIFT

#### TECHNICAL DATA R247D.CL

Rim clamping	10"-30"
Maximum rim width	15"
Maximum tire diameter	47"
Max. bead breaker opening	15"
Bead breaker cylinder power at 145 psi	6,745 LBS
Rotation motor	2Hp / 1.5 Kw inverter motor
Recommended air supply	115-145 PSI / 8-10 bar
Power supply*	220v / 10 / 60 Hz VARIABLE SPEED

\*SHIPS WITH NEMA L6 - 20 PLUG

# R145 / R145DR

## AUTOMATIC TILTBACK CHANGERS

High performance, top-of-the-range tire changers model with double-acting bead breaker cylinder.

Designed for low-profile and large-sized steel or alloy rims. Works easily on any wheel up to a maximum width of 17".

#### FEATURES

- 2 position centering lock / 10" - 26" range
- Double synchronization for load distribution
- Adjustable tool guide for alloy rim protection
- Bolt caps to prevent hooking of air hoses
- Integrated helper arm included
- Lower bead lifting roller
- Pneumatic top bead pressing tool
- Filter / Tire paste lubricant and brush

#### R145DR TILTBACK VSC / Variable Speed Control

##### Inverter motor 0-16 Variable Speed Control

Designed with an innovative electrical motor inverter, techs are able to regulate the chucking table rotation speed to reduce the stress on the bead to avoid any damage to the tire. 220V drive motor. Model features a hand-controlled bead breaker.

**R145DR FI Configuration** / Quick inflation for tubeless tires, includes gauge

#### STANDARD ACCESSORIES

##### VSG800A117 (2 x kit)

Tool protection kit for metal mount / demount head

##### VSG800A6 (24" - 26")

Clamp Protectors (4 pcs)

##### VSG800A26

Blade with adjustment inclination. Allows to break the bead at the correct angle. 145D Model.

##### VSG800A11 Qty. of 1

Bead breaker protection

##### VSG800A11K Qty. of 5

#### OPTIONAL ACCESSORIES

##### SMALL WHEEL ADAPTER VSG800A111 KIT

Reduces clamping capacity to 8" for ATVs and lawn equipment tires. - requires VSG800A107 wheel clamps

##### VSG800A107 Motorcycle Adapters

Wheel reducer adapters, -2", -4" from outside



#### TILTBACK CHANGER

With integrated helper arm

#### TECHNICAL DATA R145 / R145DR

Chuck rotation speed (rev/min)	0-16 rpm / 7.3 rpm (D version) 7.3 rpm (110v version)
Maximum torque to chuck	885 Ft/Lbs (1200 Nm)
Self-centering lock: external	10" - 26"
Self-centering lock: internal	12" - 28.5"
Tool working span	8" - 32"
Maximum tire diameter	45" (1143mm)
Maximum tire width	17" (431mm)
Bead breaker cylinder power at 145 psi	6,745 Ft/Lbs (3060 kg)
Power supply (Model 145) Motor	110v / 10 / 60 Hz 1Hp
Power supply* (Model 145DR) Motor	220v / 10 / 60 Hz / 1 Hp

\*SHIPS WITH NEMA L6 - 20 PLUG



#### STANDARD PLASTIC TOOL HEAD

##### VSG800A126

Tool head with support for tilt back units.



SCAN CODE FOR PRODUCT VIDEO



# R146R

## SWINGARM PRO HIGH PERFORMANCE HIGH VOLUME

### Extra-height speedchanger.

Hand controlled bead breaker with a 110v drive motor provides needed torque for difficult assemblies.

The gear box is installed between two steel plates avoiding flex.

TECHNICAL DATA	R146
External clamping	10" - 26"
Maximum torque to chuck	885 Ft/Lbs (1200 Nm)
Internal clamping	12" - 28.5"
Max. tire diameter	46" (1200 mm)
Max. tire width	15" (380 mm)
Max. bead breaker opening	15" (380 mm)
Bead breaker cylinder power at 145 psi	6,745 Ft/Lbs (3060 kg)
Power supply	110v / 1Ø / 60 Hz

### R146RP

## Hand Controlled with Helper Arm

### INCLUDES PLUS91SA AIR-DRIVEN HELPER ARM\*

Bead top pressing and tire lifting device for large and special tires.

P Models feature a lower bead lifting roller and pneumatic top bead pressing tool.

\*PLUS91SA FOR R146RP IS NOT INSTALLED PRIOR TO DELIVERY.

### R146RA

## Hand Controlled / Air Motorized Changer

### R146RAP

## with Plus91SA Helper / Air Motorized Changer

### FEATURES

- Hand controlled bead breaker
- Extra large 46" frame
- Air tank located in column
- Removable pedal assembly for maintenance
- Valve tray
- Tire paste lubricant and brush

#### VSG800A117 (2 x kit)

Tool protection kit for metal mount / demount head

#### VSG800A6 (24" - 26")

Clamp Protectors (4 pcs)

#### VSG800A11 Qty. of 1

Bead breaker protection

#### VSG800A11K Qty. of 5

### OPTIONAL ACCESSORIES

#### SMALL WHEEL ADAPTER VSG800A111

Reduces clamping capacity to 8" for

ATVs and lawn equipment tires.

- requires VSG800A107 wheel clamps

#### VSG800A107 Motorcycle Adapters

Wheel reducer adapters, -2", -4" from outside

### STANDARD PLASTIC TOOL HEAD

#### VSG800A60

Tool head with support for swing arm units.



Shown:  
R146RP with  
PLUS91SA  
HELPER ARM



SCAN CODE FOR  
PRODUCT VIDEO

# R140i

## SWINGARM SHOP TOP QUALITY / ENTRY LEVEL PRICE

Heavy duty swing arm structure with exclusive 110v single speed motor provides needed torque and the rigid self-centering chuck with wide clamping range handles a variety of needs.

Equipped with galvanized, double-operating bead breaker cylinder.

### FEATURES

- Tire Diameters of 40"
- 22" Outside Clamping
- 24" Inside Clamping
- Removable pedal assembly for easy maintenance
- Tire paste lubricant and brush

### OPTIONAL UPGRADE PLUS91N HELPER ARM

Bead top pressing and tire lifting device for large and special tires.



TECHNICAL DATA	R140i
External clamping	11" - 22"
Internal clamping	13" - 24.5"
Max. tire diameter	40.5" (1030 mm)
Max. tire width	12" (305 mm)
Max. bead breaker opening	15" (380 mm)
Bead breaker force	6,745 Ft/Lbs (3060 kg)
Rotation speed	7.3 rpm
Max. torque turntable	885 Ft/Lbs (1200 Nm)
Power supply	110v / 1Ø / 60 Hz

### OPTIONAL MOTORCYCLE WHEEL CLAMPS

#### VSG800A99

+ 5" from the outside for 20" - 22" tables

#### VSG800A111 SMALL WHEEL ADAPTER

Reduces clamping capacity to 8" for ATVs and lawn equipment tires. Use with rim clamp tire changers only - requires VSG800A99 wheel clamps.

### STANDARD PLASTIC TOOL HEAD

#### VSG800A60

Tool head with support for swing arm units.





# R501PLUS

## SPEEDCHANGER HD

### PATENTED/ SUPER FAST TIRE CHANGER

**Dismount and mount a truck tire in 30 seconds.**

A patented operating system with four rollers positioned on both sides of the wheel in opposite positions. Simple tire dismounting: while the front bead-breakers keep the bead in the drop center, the rear breakers continue their course until the dismounting is complete. The bead-breakers are supported by two separately controlled arms and each has two rollers: one conical which pushes on the bead and one cylindrical which pushes the side of the tire.

#### FEATURES

- Adjustable arm position
- Quick loading
- Hydraulic clamping / chucking table
- Stand-by function
  - no noise when not in operation
- Hydraulic controls
- Plastic bead breakers protect rim
- VSG108A3 lever
- Tire paste lubricant and brush



**STANDARD CLAMP PROTECTOR VSG108A2**  
Protects aluminum wheels / 4x kit



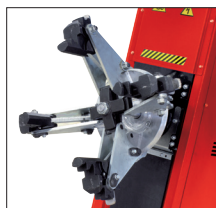
SCAN CODE FOR PRODUCT VIDEO

#### HYDRAULIC CLAMPING

4" (90mm) Min. clamping  
13" (330mm) Min. height

#### TECHNICAL DATA

	R501PLUS
Chucking unit rotation motor	2.7 Hp / 2 kW
Hydraulic drive unit motor	1 Hp / 1.5 kW
Maximum tire diameter	52" (1320mm)
Max. tire width	21" (540mm)
Bead breaker power	13,300 Ft/Lbs / 18000 N
Maximum assembly weight	2,645 lbs / 1200 kg
Chuck rotation speed (rev/min)	8
Max. torque to chuck	585 Ft/Lbs / 2600 Nm
Power supply	220v / 3Ø / 60 Hz



**SERVICE TIRE DIAMETERS UP TO 52"**



#### OPTIONAL ACCESSORIES

**VSG90A6**  
Aluminum rim clamp

**VSG108A24**  
Disc for wheels with lock ring / agricultural wheels



# R560

## MOBILE HD

### WORKSHOP SERVICE

#### Easy to use changer.

This easy-to-use changer is designed for closed vans or small workshops. Controls are protected on changer console and the hydraulic clamping and chucking table are suitable for agricultural tires with optional VSG108A22 wheel disc.



#### STANDARD ROLLER

Easy setting for tubeless tires



**SERVICE TIRE DIAMETERS UP TO 51"**



**STANDARD CLAMP PROTECTOR VSG108A2**  
Protects aluminum wheels / 4x kit



SCAN CODE FOR PRODUCT VIDEO

#### TECHNICAL DATA

	R560
Chucking unit rotation motor	1.5 Hp / 1.1 kW
Hydraulic drive unit motor	2.7 Hp / 2 kW
Rim diameter	11" - 27"
Maximum tire diameter	51" (1300mm)
Max. tire width	37.4" (950mm)
Bead breaker power	3,597 Ft/Lbs / 16000 N
Maximum assembly weight	2,645 lbs (1200 kg)
Chuck rotation speed (rev/min)	8
Max. torque to chuck	1253 Ft/Lbs (1700 Nm)
Power supply*	220v / 1Ø / 60 Hz



#### OPTIONAL ACCESSORIES

**VSG90A6**  
Aluminum rim clamp

**VSG108A22**  
Disc for wheels with lock ring



# R511

## COMMERCIAL HD

### SUPER DUTY CHANGER

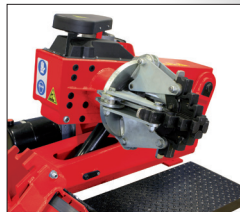
SERVICE TRUCK, BUS, SUPER SINGLE, AGRICULTURAL and LOCK RING.

The operating dimensions of the clamping unit and the head-tool carriage of this heavy-duty tire changer allows it to service a wide range of wheels. The controls enable users to regulate the speed of the tool holding carriage with lever type hydraulic distributions

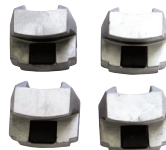
### FEATURES

- Rotational control on portable wired stand
- Cable control unit
- Quick locking manual rotation tool
- Patented VSG108A3 bead lever
- Tire paste lubricant and brush

TECHNICAL DATA	R511
Chuckling unit rotation motor	3 Hp / 2.2 kW
Hydraulic drive unit motor	1 Hp / .75 kW
Rim diameter	11" - 27"
Maximum tire diameter	64" (1640mm)
Maximum tire width	36.4" (925mm)
Chuck rotation speed (rev/min)	8
Power supply*	220v / 1Ø / 60 Hz



**HYDRAULIC CLAMPING**  
4" (90mm) Min. clamping  
13" (330mm) Min. height



**VSG108A2**  
Standard clamp  
protections for  
alloy rims / 4 x kit



**STANDARD BEAD LEVER**  
**VSG108A3** Tire Lever



**QUICK MANUAL  
ROTATION**



**SERVICE TIRE DIAMETERS UP TO 64"**

# R541

## COMMERCIAL HD

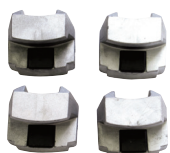
### LEVERLESS SINGLE CARRIAGE MOVEMENT

ELECTROHYDRAULIC CHANGER FOR TRUCKS, AGRICULTURAL AND EARTHMOVING VEHICLES.

The dimensions and work strokes ensure maximum efficiency for an entire range of tires. The two-speed rotation chucking table can accommodate rims up to 44" and 56" (with VSG108A12 extensions set). With leverless action, the tool operates between bead and rim, pulls up the bead and de-mounts the tire.

### FEATURES

- Cable control unit
- Rotational control on portable wired stand
- Double ratcheting locking arm
- Double speed for chucking table rotation
- Patented VSG108A3 bead lever
- Tire paste lubricant and brush

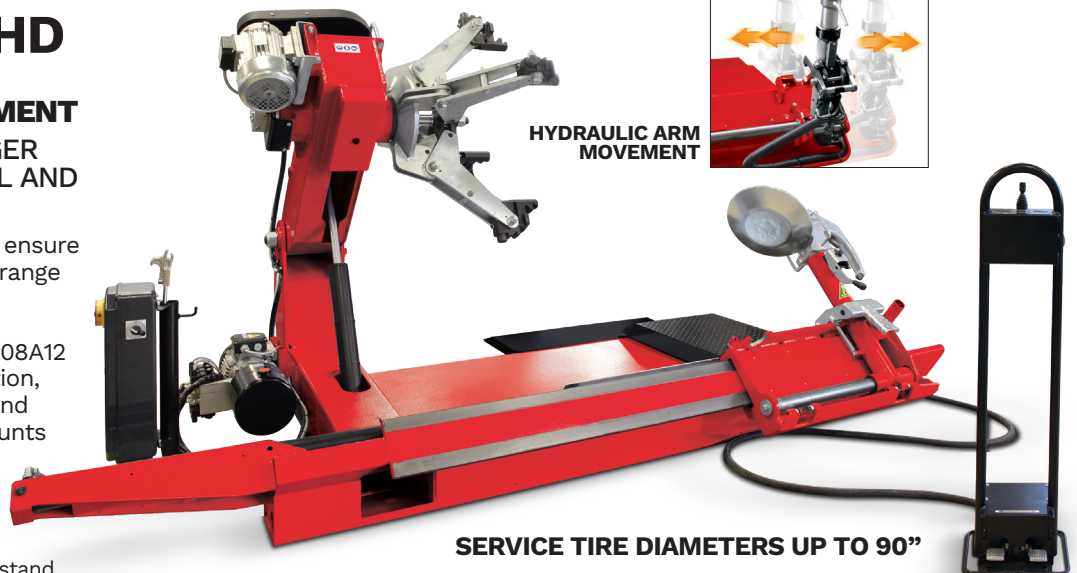
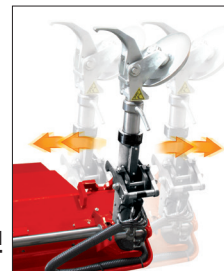


**VSG108A2**  
Standard clamp  
protections for  
alloy rims / 4 x kit

**LEVERLESS  
OPERATION  
TUBE and  
TUBELESS  
TIRES**



**HYDRAULIC ARM  
MOVEMENT**



**SERVICE TIRE DIAMETERS UP TO 90"**

TECHNICAL DATA	R541
Chuckling unit rotation motor	1.75 Hp / 1.1-1.3 kW
Hydraulic drive unit motor	2.95 Hp / 2.2 kW
Rim diameter	11" - 43"
With VSGA108A12 adapters	44" - 56"
Maximum tire diameter	90.5" (2300mm)
Maximum tire width	51" (1300mm)
Chuck rotation speed (rev/min)	4-8
Power supply	220v / 3Ø / 60 Hz



# R573

**R573BT Cordless Controls**  
Communicates via Bluetooth® transmission  
SPECIAL ORDER ONLY / Contact factory for details

## EXTREME HD

### UNIVERSAL TIRE CHANGER FOR EXTREME WHEEL DIMENSIONS

**SPECIAL ORDER** ELECTROHYDRAULIC  
CHANGER FOR TRUCKS, AGRICULTURAL  
AND EARTHMOVING VEHICLES.

#### HIGH BEAD BREAKING FORCE

The considerable bead breaking force makes  
mounting and demounting tires effortless.

#### MULTIPLE ADJUSTABLE GUIDES

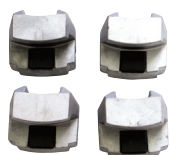
The electro-brake allows immediate stopping  
of the rotation to avoid any damage to tires.

#### STAND-BY FUNCTION

After 5 sec. the machine has not been  
used, the motor will turn off.

### FEATURES

- Console cable control unit  
with metal sheath
- Double speed table rotation
- Quick locking manual rotation tool
- B530800 long bead lifting lever
- VSG108A25 / clamp for earth-  
moving wheels
- Tire paste lubricant and brush



**VSG108A2**  
Standard clamp  
protections for  
alloy rims / 4 x kit

#### OPTIONAL ACCESSORIES

**VSG108A13** Rings Lever



**VSG108A3** Tire Lever

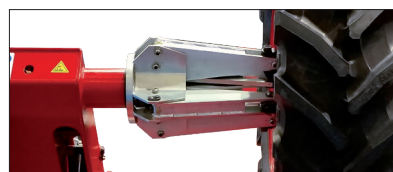


**Rotational control  
on portable wired  
stand**



#### HYDRAULIC CLAMPING

4" (90mm) min. clamping  
13" (330mm) min. height  
19" and 22.5" truck wheels



**Oversized chucking dimension** allows  
work on larger tires without interference.  
Reach 50" wheels without extensions  
or wheels from 51" to 60" with optional  
VSG108A39 adapter set.



**AUTOMATIC LIFTING  
and ROTATION**

**SERVICE TIRE DIAMETERS UP TO 106"**

TECHNICAL DATA	R573
Chucking unit rotation motor	2.95 Hp / 2.2 kW
Hydraulic drive unit motor	3.35 Hp / 2.5 kW
Rim diameter	11" - 50"
With VSGA108A39 adapters	51" - 60"
Maximum tire diameter	106" (2700mm)
Maximum tire width	69" (1750mm)
Chuck rotation speed (rev/min)	1 - 5 - 10
Power supply	220v / 3Ø / 60 Hz

### OPTIONAL COMMERCIAL HD ACCESSORIES



**VSG108A12** (4 x kit)  
Set of extensions to  
increase clamping capacity  
For R541 changer

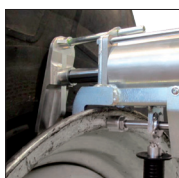
**VSG108A39** (4 x kit)  
Extensions for R573 changer



**VSG108A25 Clamp**  
for steel wheels



**VSG90A6 Clamp**  
for alloy wheels



**VSG108A34**  
Pneumatic bead pushing device



**B5308000**  
Long bead lifting lever





**TIRE  
CHANGERS**

**WHEEL  
BALANCERS**



**ALIGNMENT  
RUNWAY LIFTS**

**ALIGNMENT  
SYSTEMS**



**Rotary's line of premium equipment is manufactured to the highest standards of quality and durability to help you perform the job right the first time, every time.**

Offer your customers top quality tire and wheel service by putting Rotary to work for you.

## Rotary Wheel Service Equipment

2700 Lanier Drive / Madison, IN 47250, USA

[www.rotarywheelservice.com](http://www.rotarywheelservice.com)



### North / South America Information

#### Sales:

800.640.5438

[userlink@rotarylif.com](mailto:userlink@rotarylif.com)

#### Tech. Support:

800.445.5438

[techlink@rotarylif.com](mailto:techlink@rotarylif.com)

### Global Contact Information

**USA:** 1.812.273.1622

**Canada:** 1.905.812.9920

**Latin America / Caribbean:** 1.812.273.1622

**Brazil:** +55.11.4534.1995

**Government Sales:** 800.445.5438 X5655



Contract No. 061015-RRL



FSS Contract No. GS07F294AA



Contract No. 05316

#### For additional information:

[rotarylif.com/Government-Purchasing-Assistance/](http://rotarylif.com/Government-Purchasing-Assistance/)

Lit# Rotary Wheel Service Changers Brochure.2019.10

©2019 VEHICLE SERVICE GROUP<sup>SM</sup>. Printed in U.S.A., All Rights Reserved.  
Unless otherwise indicated, ROTARY, VEHICLE SERVICE GROUP<sup>SM</sup>, DOVER and all other trademarks are property of Dover Corporation and its affiliates.

Product specifications, part numbers, images and component descriptions are subject to change without notice or liability.