

Available with SHOCKWAVE™



Drive-On

GENERAL SERVICE DRIVE-ON RUNWAY LIFTS

14,000 TO 60,000 LBS. CAPACITY



ROTARY LIFT

THE WORLD'S MOST TRUSTED LIFT



Shown: SM014U101Y 14,000 lbs. capacity SHOCKWAVE-equipped runway lift with optional rolling jacks

www.rotarylif.com

WHAT COMES STANDARD WITH EVERY RUNWAY LIFT?

Versatility.

Decades of experience goes into every drive-on lift we build. These runway lifts handle cars, vans, and trucks with ease.

Functionality, space consideration, and improved productivity are key components to consider when investing in a new lift. Our designers and engineers have taken all these considerations and used them to develop the most innovative, reliable and productive drive-on lift products on the market today.

Focus on Greater Productivity and More Workspace

Take advantage of the quick set-up for undercarriage repairs and wheel service. These versatile runway lifts are proven, durable and require little to no maintenance. **Plus with Rotary's taller column design,** technician's work under the highest runway rise in the industry allowing more service access.

Supercharged Rotary Drive-On Lifts are available with **SHOCKWAVE Equipped Power**

Greater productivity means more profits and both can be achieved with Shockwave™. **Cycle your lifts 2 times faster!** Shockwave-equipped lifts are the fastest in the world helping you get more done in less time.

Superior Design with Rigorous Cycle Testing

Rotary lifts are a great value because they are engineered to provide years of trouble-free service. Rotary maintains the largest in-house mechanical, electrical and controls engineering staff in the industry. State of the art design, modeling and analysis software ensures you get a well designed, long lasting product. **Rotary's high performance hydraulic and mechanical lifting system,** concealed and protected under the runway, generates greater durability and a more efficient and dependable lift operation.

Rotary cycle tests its lifts and components for at least 20,000 cycles at rated load, giving you a robust, proven and quality tested lift that won't let you down.

Local Service and Support

Our sales force attends intensive training on our products and the issues that face service repair facilities. Rotary representatives can help you evaluate which lift best meets your needs. With a world-wide network of highly-trained Rotary Authorized Installers and Distributors, service and parts support is always close at hand.

All from the brand you've trusted since 1925.

Rotary Lift.



SHOCKWAVE-EQUIPPED LIFTS FEATURE

2X Faster rise and descent than standard four-post lifts*



Patent pending DC power - Operates during loss of facility power



Spotline™ motion activated laser helps spot vehicles the first time



Center vehicles in the service bays quickly and accurately using this laser-guided system.

Wall or ceiling mounted laser

Rotary DESIGN ADVANTAGE **SHOCKWAVE Four-Post** **PRODUCTIVITY & PERFORMANCE**

1. **PATENTED LOCKING SYSTEM**
2. **PATENT PENDING DC POWER - PROVIDES 2X FASTER SPEED**
3. **HIGHER RISE**
4. **INEXPENSIVE DAILY OPERATION**
5. **THIRD-PARTY ETL GOLD CERTIFIED**

DELIVERING PRODUCTIVITY and PERFORMANCE **SUPERCHARGE YOUR LIFT WITH** **SHOCKWAVE™**

**MAKE YOUR
RUNWAY LIFT
2X FASTER**

*Mount power
unit on front as
shown or outside
of front column*

- ✓ **Accelerate your productivity immediately!**
- ✓ **Increase your number of service orders per bay!**
- ✓ **Added productivity equals EXTRA PROFIT!**



Shown: SM014U101Y 14,000 lbs. capacity
SHOCKWAVE-EQUIPPED runway lift

**The Industry Standard
JUST GOT FASTER!**

Shockwave's DC patent pending power system gives you lower cost and more reliable operation while using two standard Group 24 batteries.**

Shockwave's built in battery charger uses 110v power, eliminating the need for expensive 220v wiring resulting in an installation savings of 80% or more!

*Actual rise and descent times may vary depending on weight of the vehicle. **Batteries not included.

SHOCKWAVE IS AVAILABLE ON SM14 / SM014 SERIES LIFTS



X14 14,000 LBS. CAPACITY DRIVE-ON SCISSOR LIFT

OPEN FRONT AND REAR DESIGN WITH VERSATILE WHEELBASE RANGE

Rotary's new 14,000-pound scissor lift offers an impressive 198-inch wheel base - service the smallest cars to the largest mid-sized trucks and vans.

Lift Features:

Intuitive console controls

40" between platforms for more access

True up and down movement saves bay space

Folding ramps with rear wheel chocks

The X14 open front and rear design creates space-saving working clearance through the entire middle of lift with open access points for easy movement - front, rear and side to side walk through - for accessing multi-bay projects and tool boxes.



Automatic Rear Wheel Chocks

engage when the lift is raised and release when lowered.



ROTARY LIFT

25 - 1/2" wide runways create a greater drive on area.

True up and down lifting movement saves bay space

All pivot points are made with self lubricating bushings for long life.

Base plate leveling system for easy installation.

VERSATILE 198" WHEELBASE RANGE
Service a larger range of vehicles



Model Shown: X14N10110
14,000 lbs. capacity drive-on surface mounted scissor lift



Intuitive Control Unit

Built with robust, simple buttons and switches for long life.



Robust Hydraulic System

Simple, reliable master / slave hydraulic system maintains level platforms during entire lifting cycle.

Mechanical locks with 14 locking positions, automatically engage and pneumatically release, ensuring maximum security when lift is in raised positions.

Surface model shown.
Recessed models available.

Optional Rolling Jacks increase service opportunities by lifting front, rear or all wheels off the runways for brake, tire, suspension and two or four-wheel alignment work.

Rotary DESIGN ADVANTAGE

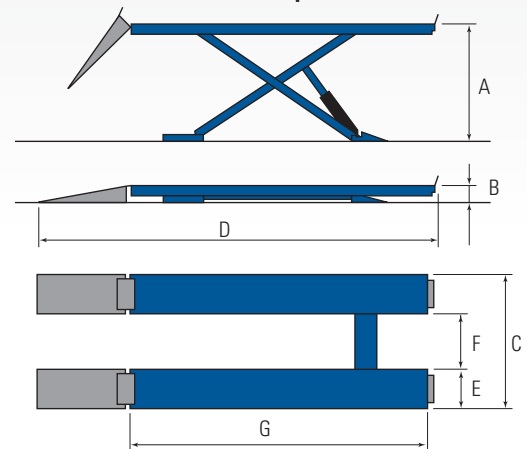
X14 PRODUCTIVITY & PERFORMANCE

1. TRUE UP / DOWN LIFTING
2. VERSATILE WHEELBASE RANGE
3. OPEN FRONT AND REAR FOR BETTER VEHICLE ACCESS
4. THIRD-PARTY ETL GOLD CERTIFIED

X14 LIFT SPECIFICATIONS

Model:	X14
Lifting Capacity	14,000lbs. (6350kg)
A. Maximum Rise*	72 - 3/4" (1848mm) surface mounted
B. Lowered Height	10 - 3/4" (275mm)
C. Width Overall	91" (2310mm)
D. Overall Length	277" (7035mm)
E. Runway Width	25 - 1/2" (648mm)
F. Width Between Platforms	40" (1015mm)
G. Runway Length	216" (5486mm)
Max. Wheelbase	198" (5038mm)
Motor / Voltage	5 hp / 230 volt / Single Phase
Time of Full Rise	77 seconds
Lowering Time	47 seconds
Compressed Air Connection	85 -110psi
Recommended Bay Size	14' x 27' (4.26m x 8.22m)

Surface model specifications



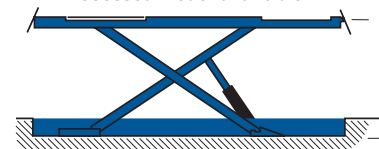
* Rise measures floor to top of runway at full stroke.

X14 lifts are available in blue only.

Power unit consoles are gray.

RAL5005

Recessed model available



SM14 14,000 LBS. CAPACITY FOUR-POST LIFT

DRIVE-ON CLOSED FRONT LIFT

SM14 Series drive-on lifts are engineered for commercial service, are ALI/ETL certified and exceed our industry exclusive performance durability cycle testing.

These 14K capacity lifts come standard with unmatched features, equipment and a array of productivity enhancing accessories. Three available wheelbases allow any shop to service a wide range of vehicles from cars to full size trucks. Bolster your service offerings and boost your bottom line with Rotary Lift, the most proven vehicle lifting name in the industry.

Lift Features:

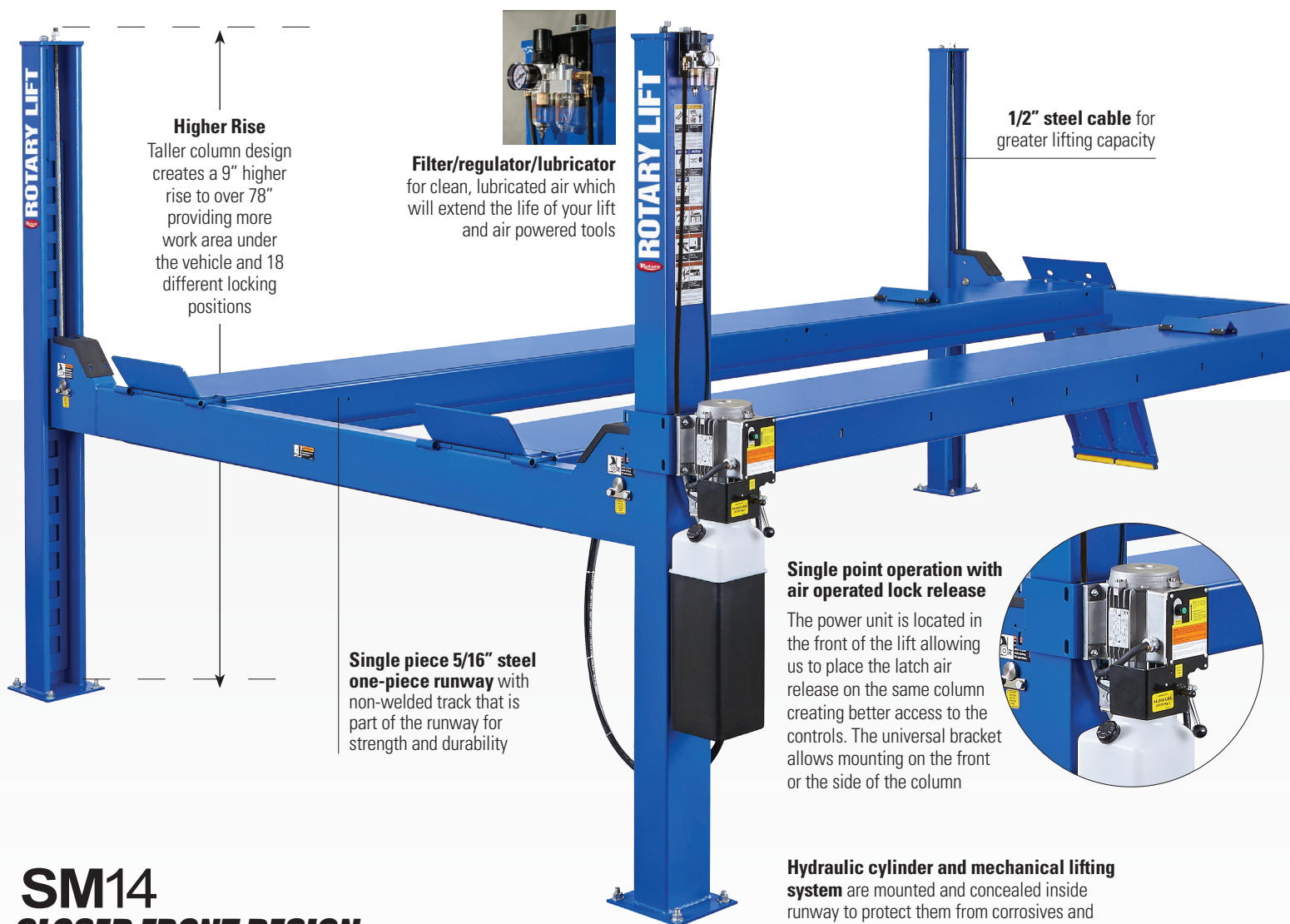
Higher rise to over 78" provides more work area under the vehicle

Powder coated hammer tone paint finish improves durability and paint life

Louvered ramps with polymer rollers provide improved traction and less floor gouging when driving on the lift

Available with SHOCKWAVE - creating 2X faster rise and descent

EL model has more than **9 additional inches of wheelbase**



SM14 CLOSED FRONT DESIGN



Shown: SM14U101Y 14,000 lbs. capacity
SHOCKWAVE-EQUIPPED runway lift

Available with
SHOCKWAVE™



EXCLUSIVE PATENTED FEATURES



Patented dual function Sentinel Lock™ system features a slack cable guide arm that stays “on guard” to manage the lock latch. In a slack cable situation, the lock system kicks the lock into position. Fewer parts means less opportunity for service issues and more peace of mind.



Adjustable latch bars ensure the runways are level when resting on the latch bars at any of the multiple locking positions.

Robust hydraulic and mechanical lifting system design - concealed and protected under the runway, high performance cables and sheaves generate greater durability and a more efficient and dependable lift operation



41" louvered ramps for improved drive-on traction.

Wheel chocks automatically engage when lift is raised



Polymer rollers protect shop floor and adds a quieter operation



Powder coated hammer tone paint finish improves durability and paint life

SM14 LIFT OPTIONS

Rolling Jacks

Increase your service opportunities by lifting front, rear or all wheels off the runways for brake, tire, suspension and two or four-wheel alignment work



Bolt-On Alignment Kits with new, easy-to-use patented spacer plate

Convert your general service four-post lift into an alignment lift that is compatible with Rotary Wheel Service alignment systems. Comes standard with stainless steel turning radius gauges.

CONSULT FACTORY FOR OPTIONS

Rotary DESIGN ADVANTAGE

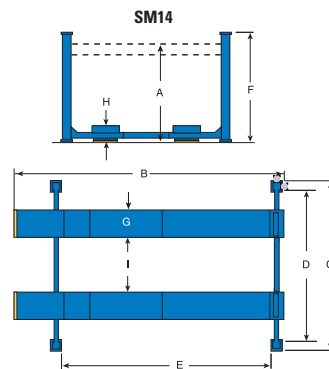
SM14 Four-Post PRODUCTIVITY & PERFORMANCE

1. **PATENTED LOCKING SYSTEM**
2. **INDUSTRY-BEST RISE HEIGHT**
3. **SHOCKWAVE-EQUIPPED**
4. **THIRD-PARTY ETL GOLD CERTIFIED**

SM14 LIFT SPECIFICATIONS

Model:	SM14
Max. Wheelbase*	S 158" (4013mm) L 182" (4622mm) EL 215" (5461mm)
A. Rise / Floor to top of runway	78 3/4" (2000mm)
B. Length Overall†	S 18' 10" (5740mm) L 20' 10" (6350mm) EL 23' 7" (7188mm)
C. Width Overall**†	10' 11 3/4" (3346mm)
Runway Length	S 14' 7 1/4" (4451mm) L 16' 7 1/4" (5061mm) EL 19' 4" (5893mm)
D. Inside of Columns**	116 1/4" (2953mm)
E. Between Front and Rear Columns	S 171 1/4" (4349mm) L 195 1/4" (4959mm) EL 228 1/4" (5798mm)
F. Height of Columns	7' 6 1/2" (2299mm)
G. Width of Runways	20" (508mm)
H. Height of Runways	7" (178mm)
I. Width Between Runways	43"- 46" (1092-1168mm)
Lifting Capacity	14,000 lbs. (6350kg)
Motor / SHOCKWAVE	2 HP / 5 HP
Voltage Single Phase / SHOCKWAVE	208v-230v / 110V
Time of Full Rise	65 seconds
SHOCKWAVE Time of Full Rise and Descent***	35 seconds 18 seconds
Min. Bay Size	S 15' x 23' (4572 x 7010mm) L 15' x 26' (4572 x 7925mm) EL 15' x 28' (4572 x 8534mm)

S = Shorter length **L** = Standard length **EL** = Extended length



* Maximum wheelbase is based on a tire diameter of 29-1/2" (749mm)

** Narrow bay models available. Consult factory for min. bay size before ordering

*** Actual rise and descent times may vary depending on weight of the vehicle

† Length and / or width overall is 10 -1/2" longer with SHOCKWAVE power unit mounted on the side or front of column

SM14 lifts are available in blue and red.

Additional colors maybe available - consult your Rotary® representative for details

RAL5005

RAL3002

SMO14 14,000 LBS. CAPACITY FOUR-POST LIFT

OPEN FRONT DRIVE-ON LIFT

SMO14 OPEN FRONT drive-on lifts are engineered for commercial service, are ALI/ETL certified and exceed our industry exclusive performance durability cycle testing

Like the closed front SM14, the SMO14 comes standard with unmatched features, equipment and numerous productivity enhancing accessories. The **OPEN FRONT DESIGN** allows greater vehicle access and enhanced productivity. The available wheelbases allow any shop to service a wide range of vehicles from cars to full size trucks.

Lift Features:

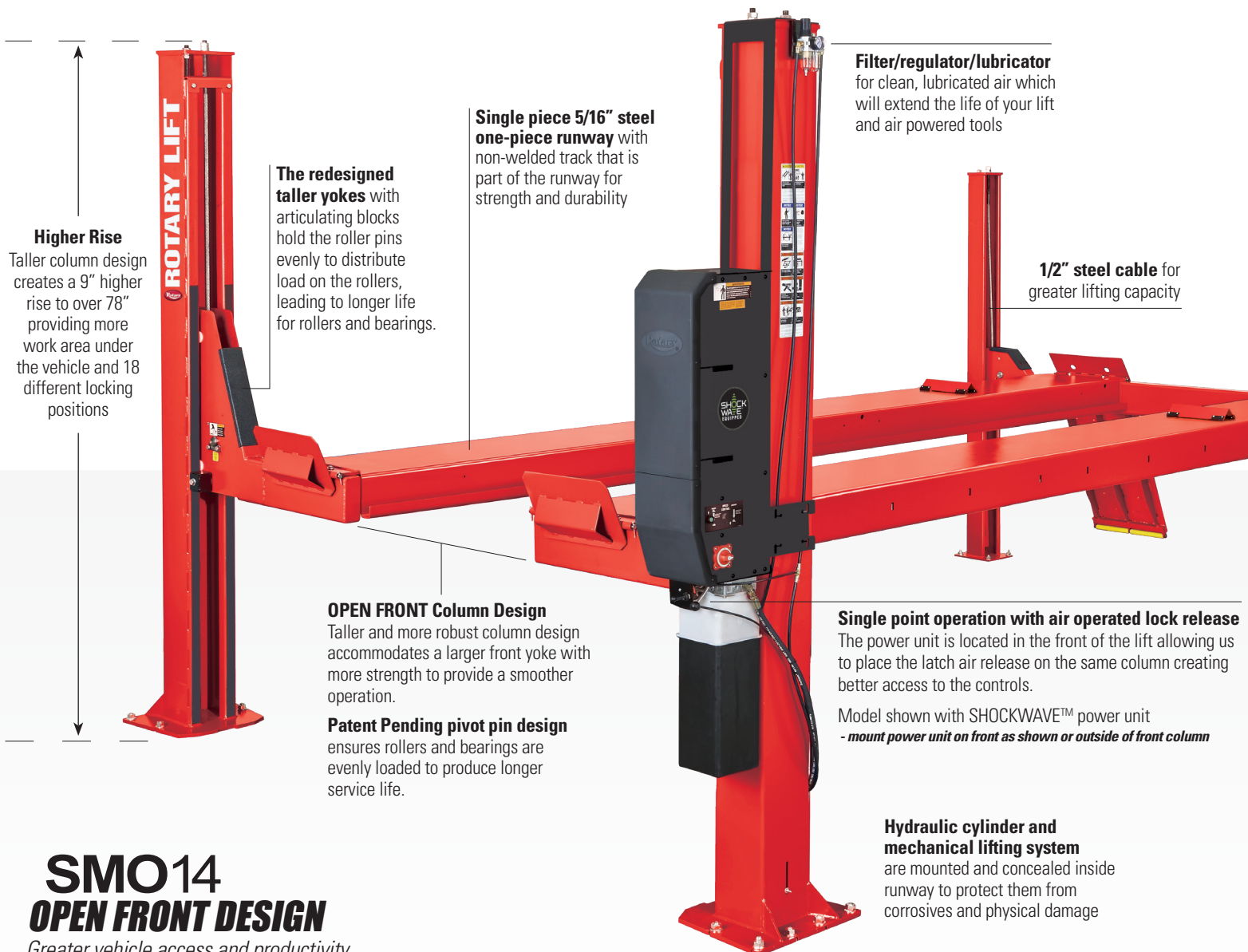
Higher rise to over 78" provides more work area under the vehicle

Powder coated hammer tone paint finish improves durability and paint life

Louvered ramps with polymer rollers provide improved traction and less floor gouging when driving on the lift

Available with SHOCKWAVE - creating 2X faster rise and descent

EL model has more than **9 additional inches of wheelbase**



SMO14 OPEN FRONT DESIGN

Greater vehicle access and productivity

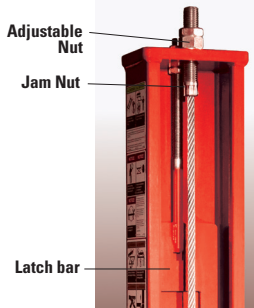


Shown: SMO14U101Y 14,000 lbs. capacity
SHOCKWAVE-EQUIPPED runway lift

Available with
SHOCKWAVE™



EXCLUSIVE PATENTED FEATURES



Patented dual function Sentinel Lock™ system features a slack cable guide arm that stays "on guard" to manage the lock latch. In a slack cable situation, the lock system kicks the lock into position. Fewer parts means less opportunity for service issues and more peace of mind.



Adjustable latch bars ensure the runways are level when resting on the latch bars at any of the multiple locking positions.

Robust hydraulic and mechanical lifting system design - concealed and protected under the runway, high performance cables and sheaves generate greater durability and a more efficient and dependable lift operation



41" louvered ramps for improved drive-on traction.

Wheel chocks automatically engage when lift is raised



Polymer rollers protect shop floor and adds a quieter operation



Powder coated hammer tone paint finish improves durability and paint life

SMO14 LIFT OPTIONS

Rolling Jacks

Increase your service opportunities by lifting front, rear or all wheels off the runways for brake, tire, suspension and two or four-wheel alignment work



#R.J7000Y
7,000 lbs. capacity

Bolt-On Alignment Kits with new, easy-to-use patented spacer plate

Convert your general service four-post lift into an alignment lift that is compatible with Rotary Wheel Service alignment systems. Comes standard with stainless steel turning radius gauges.

CONSULT FACTORY FOR OPTIONS

Rotary DESIGN ADVANTAGE

SMO14 Four-Post

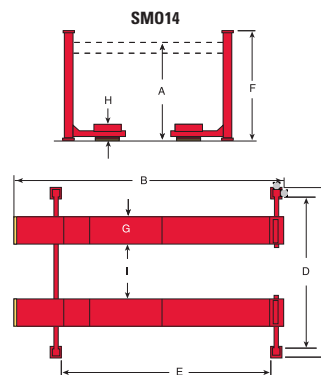
PRODUCTIVITY & PERFORMANCE

1. **PATENTED LOCKING SYSTEM**
2. **INDUSTRY-BEST RISE HEIGHT**
3. **SHOCKWAVE-EQUIPPED**
4. **THIRD-PARTY ETL GOLD CERTIFIED**

SMO14 LIFT SPECIFICATIONS

Model:	SMO14
Max. Wheelbase*	L 182" (4622mm) EL 215" (5461mm)
A. Rise / Floor to top of runway	78 3/4" (2000mm)
B. Length Overall†	L 21' 1" (6426mm) EL 23' 10" (7264mm)
C. Width Overall†	11' 8 1/2" (3568mm)
Runway Length	L 16' 7 1/4" (5061mm) EL 19' 4" (5893mm)
D. Inside of Columns	116 1/4" (2953mm)
E. Between Front and Rear Columns	L 194 3/4" (4946mm) EL 227 3/4" (5785mm)
F. Height of Columns	9' 1 1/16" (2770mm)
G. Width of Runways	20" (508mm)
H. Height of Runways	7" (178mm)
I. Width Between Runways	43" (1092mm)
Lifting Capacity	14,000 lbs. (6350kg)
Motor / SHOCKWAVE	2 HP / 5 HP
Voltage Single Phase / SHOCKWAVE	208v-230v / 110V
Time of Full Rise	65 seconds
SHOCKWAVE Time of Full Rise and Descent**	35 seconds 18 seconds
Min. Bay Size	L 15' x 26' (4572 x 7925mm) EL 15' x 28' (4572 x 8534mm)

L = Standard length **EL** = Extended length



* Maximum wheelbase is based on a tire diameter of 29-1/2" (749mm)
 ** Actual rise and descent times may vary depending on weight of the vehicle
 † Length and / or width overall is 10 - 1/2" longer with SHOCKWAVE power unit mounted on the side or front of column

SMO14 lifts are available in blue and red.

RAL5005 RAL3002

Additional colors maybe available - consult your Rotary® representative for details and pricing.

SM18

18,000 LBS. CAPACITY FOUR-POST LIFT

SERVICE CARS, VANS AND COMMERCIAL VEHICLES WITH EASE

When it comes to vehicle services, the versatile SM18 can handle a wheelbase range up to 230" and adding optional alignment equipment converts this lift to match Rotary Wheel Service alignment systems.

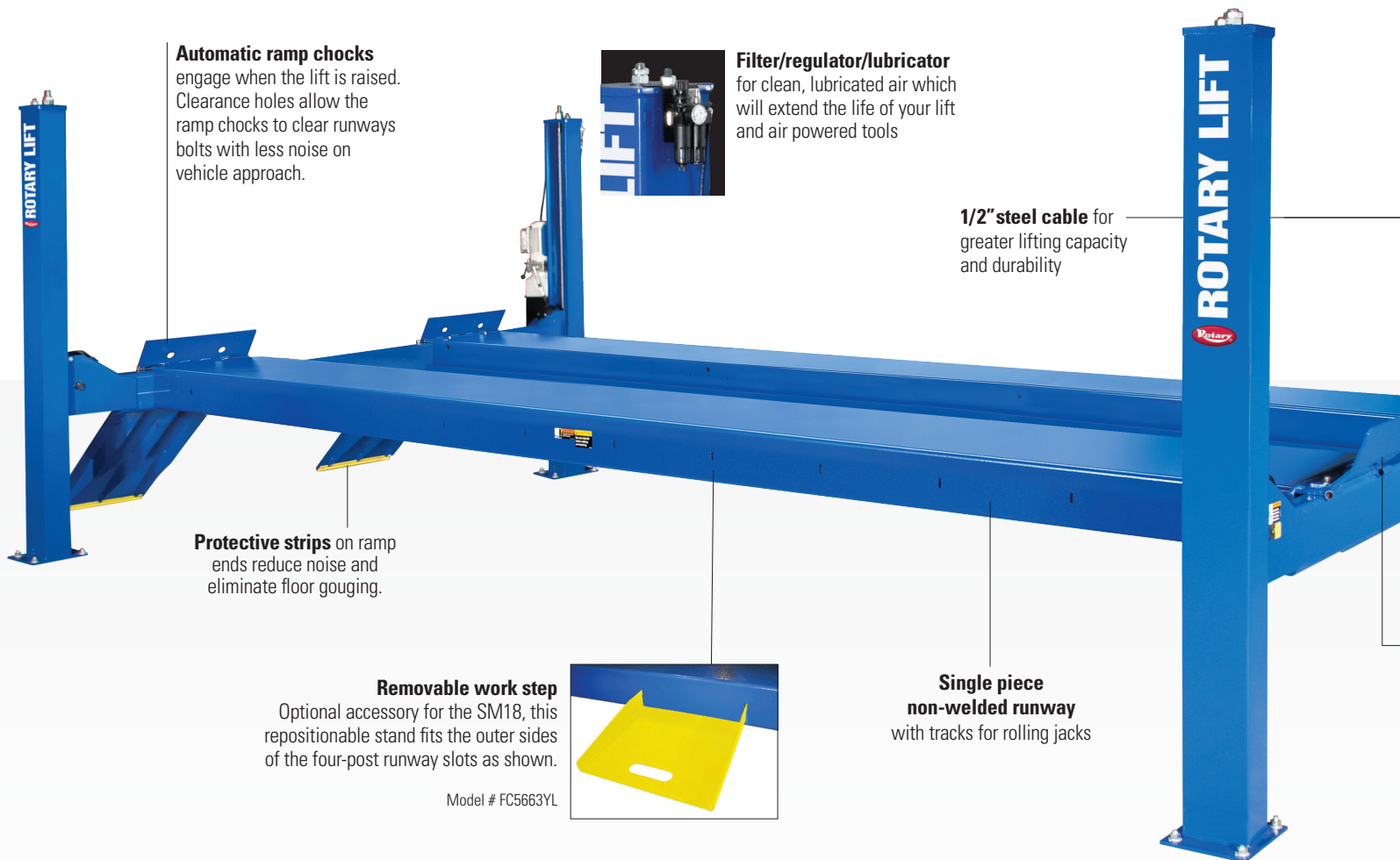
18,000 lbs. capacity means more shop advantages

Take your shop services to the next level with the SM18 four-post lift. Designed without obstructions to vehicle access, technicians have room to move increasing productivity making this lift is big on performance without taking away signature Rotary lift features.

This lift is loaded with standard features you only expect to see with a Rotary drive-on lift.

Single point release air-locks save valuable working time by releasing all four spring loaded column locks with the push of a single lever.

The heavy-duty hydraulic cylinder and lift mechanism are located underneath the runway, eliminating damaging vehicle obstructions and prolonging the hydraulic system's lifespan.



Automatic ramp checks engage when the lift is raised. Clearance holes allow the ramp chocks to clear runways bolts with less noise on vehicle approach.

Filter/regulator/lubricator for clean, lubricated air which will extend the life of your lift and air powered tools

1/2" steel cable for greater lifting capacity and durability

Protective strips on ramp ends reduce noise and eliminate floor gouging.

Removable work step
Optional accessory for the SM18, this repositionable stand fits the outer sides of the four-post runway slots as shown.

Model # FC5663YL

Single piece non-welded runway with tracks for rolling jacks



Shown:
SM18N000 18,000 lbs. capacity lift

Rotary DESIGN ADVANTAGE

SM18 Four-Post

PRODUCTIVITY & PERFORMANCE

1. PATENTED LOCKING SYSTEM
2. ALIGNMENT CONVERSION AVAILABLE
3. ADJUSTABLE RUNWAY SPACING
4. THIRD-PARTY ETL GOLD CERTIFIED

SM18 LIFT SPECIFICATIONS

Model:	SM18	SM18-EL
Max. Wheelbase	194" (4927mm)	230" (5842mm)
A. Rise / Floor to top of runway	68" (1727mm)	68" (1727mm)
B. Length Overall*	22' 11" (6990mm)	25' 11" (7904mm)
C. Width Overall	137 11/16" (3497mm)	137 11/16" (3497mm)
D. Inside of Columns	122 3/16" (3104mm)	122 3/16" (3104mm)
E. Between Columns	212" (5385mm)	248" (6299mm)
F. Column Height	6' 5 3/4" (1975mm)	6' 5 3/4" (1975mm)
G. Width of Runways	22" (559mm)	22" (559mm)
H. Height of Runways	8 5/16" (211mm)	8 5/16" (211mm)
I. Width Between Runways Min. / Max	43" (1092mm) 46" (1168mm)	43" (1092mm) 46" (1168mm)
Lifting Capacity	18,000 lbs. (8165kg)	18,000 lbs. (8165kg)
Motor / Power **	2HP, 1Ø 208/230v	2 HP, 1Ø 208/230v
Time of Full Rise †	80 seconds	80 seconds
Lowering Time	25 seconds	25 seconds
Min Bay Size	13' x 27' (3962mm x 8230mm)	13' x 30' (3962mm x 9144mm)

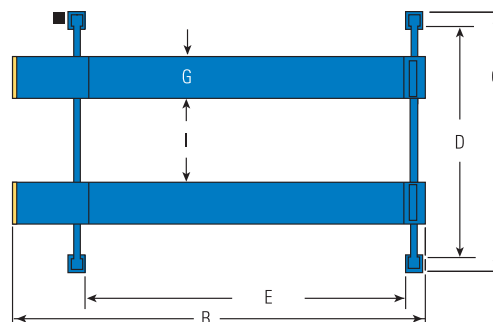
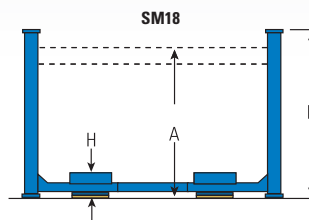
* With standard length ramps

** Optional 3-phase electrical available

† At full capacity

Standard color of lifts are blue and red. Additional colors may be available - consult your Rotary® representative for details and pricing.

			
RAL5005	RAL3002	RAL9005	RAL7040



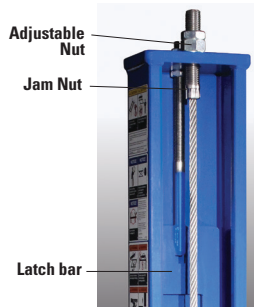
SM18 Alignment Kits

Part No. S100166 / 194" runway
Part No. S100128 / 230" runway



Shown:
SM18N000 18,000 lbs. capacity lift
Shown with optional alignment kit

EXCLUSIVE PATENTED FEATURES



Patented dual function Sentinel Lock™ system features a slack cable guide arm that stays "on guard" to manage the lock latch. In a slack cable situation, the lock system kicks the lock into position. Fewer parts means less opportunity for service issues and more peace of mind.

Adjustable latch bars ensure the runways are level when resting on the latch bars at any of the multiple locking positions.

Optional rolling jacks with a variety of adapters lift front, rear or all wheels off the runways for brake, tire, alignment and suspension work. When idle, the jacks roll out of the way to provide unobstructed workspace between runways.

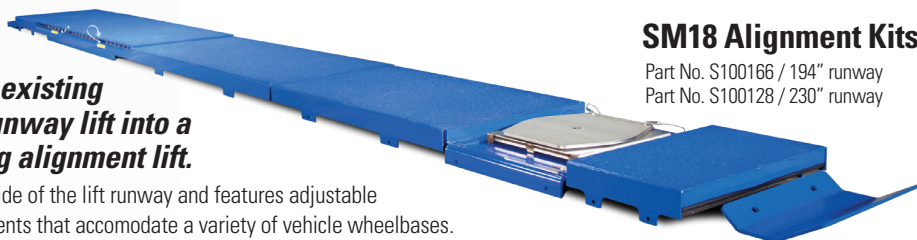
#RJ9000YBK
#RJ9000Y-1BK
9,000 lbs. capacity

Internal airline connections let two rolling jacks operate simultaneously.

Front wheel stops can easily be replaced by optional drive through ramps

Transform your existing flat top SM18 runway lift into a fully functioning alignment lift.

The kit fastens to the side of the lift runway and features adjustable flush mounted components that accommodate a variety of vehicle wheelbases.



SM30 30,000 LBS. CAPACITY RUNWAY LIFT

SERVICE A VARIETY OF VEHICLES WITH MAXIMUM PRODUCTIVITY

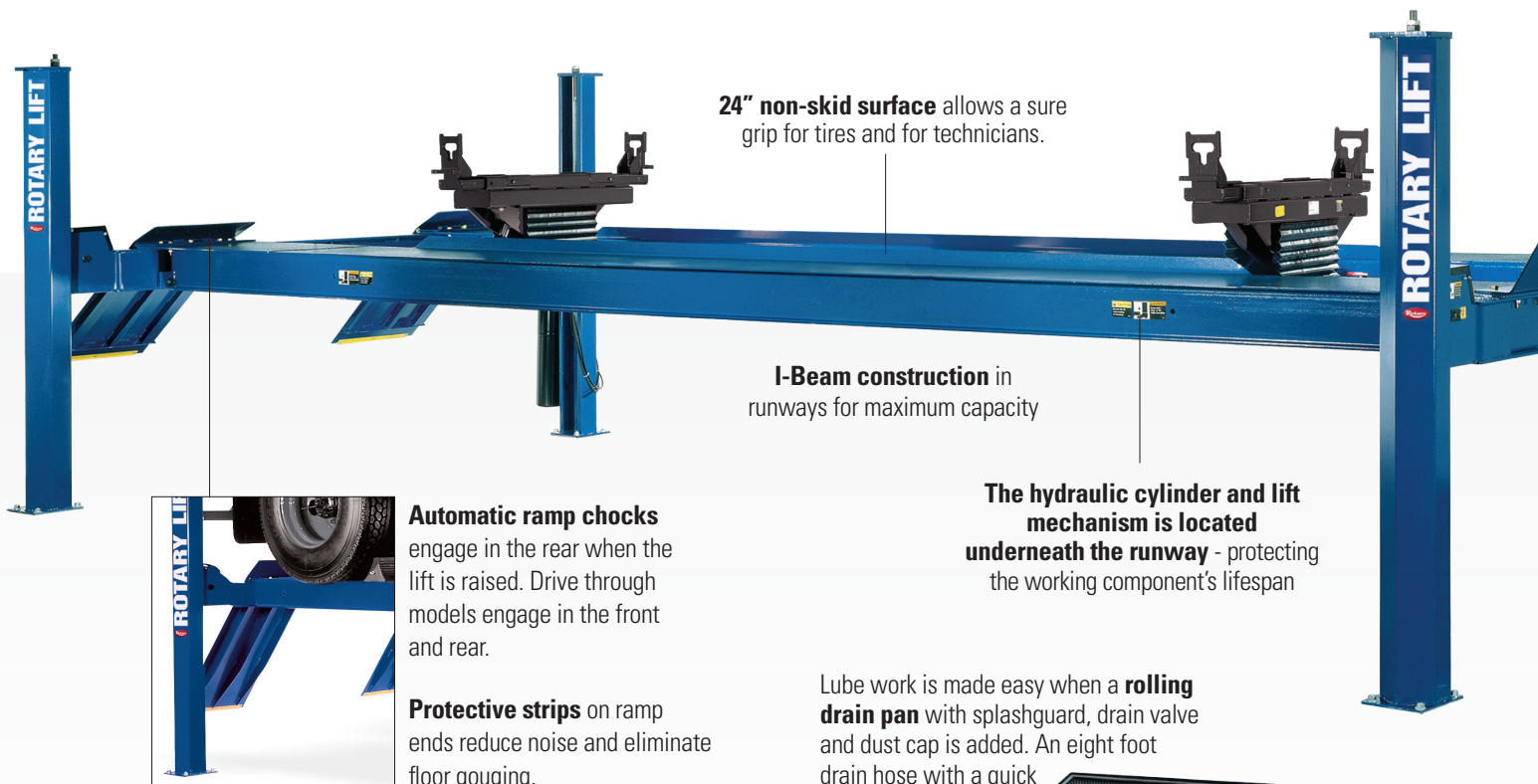
Heavy-Duty 30K Four Post Drive-On Lifts - Service Wheelbases Up To 307"

Take lift service to the next level with this four-post designed without side obstructions and better vehicle access. With a 68" lifting height, the SM30 clear floor design allows technicians room to access tool boxes and other shop equipment increasing productivity and reducing downtime. Plus, the single point air-lock release releases all four spring loaded column locks at one time adding greater productivity.

Numerous accessories turns this lift into a complete service solution for any shops' needs. These lifts handle cars, vans, trucks - even light and medium duty commercial vehicles with ease. If you service a wide variety of vehicles, Rotary 30,000 lbs. capacity SM30 lifts are the right choice for maximum productivity.



Shown: SM30N011
30,000 lbs. capacity
with optional rolling jacks



24" non-skid surface allows a sure grip for tires and for technicians.

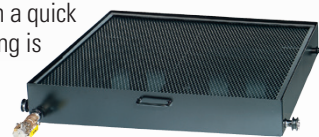
I-Beam construction in runways for maximum capacity

The hydraulic cylinder and lift mechanism is located underneath the runway - protecting the working component's lifespan

Automatic ramp chocks engage in the rear when the lift is raised. Drive through models engage in the front and rear.

Protective strips on ramp ends reduce noise and eliminate floor gouging.

Lube work is made easy when a **rolling drain pan** with splashguard, drain valve and dust cap is added. An eight foot drain hose with a quick disconnect fitting is also available.



#FC5968BK
SM300 series, 30 gallon capacity



Shown: SM30N011
30,000 lbs. capacity with optional rolling jacks

**RAISE YOUR FORKLIFT
TO NEW HEIGHTS!**

RFL25

FORKLIFT SERVICE LIFT
25,000 LBS. CAPACITY

Features

Single point release air-locks
Automatic ramp chocks
Drive through models
68" rise height
163" wheelbase
ALI / ETL Certified

**CONSULT FACTORY
FOR ADDITIONAL DETAILS**



Shown: RFL25N010
25,000 lbs. capacity

**Heavy-duty steel
cable** for greater
lifting capacity and
durability

Optional rolling jacks with a variety
of adapters lift front, rear or all wheels
off the runways for brake, tire, alignment
and suspension work. When idle, the jacks
roll out of the way to
provide unobstructed
workspace between
runways.

#R.J9000Y-2BK
9,000 lbs. capacity

#R.J150BK
#R.J152BK
Lower profile with drop in adapters
15,000 lbs. capacity



Optional internal airline connections
let two rolling jacks operate simultaneously.

Alignment Capable Lift

Convert the SM30 into a fully functioning
alignment lift by adding a two-wheel
alignment kit. Bolt-on kits include front
turning radius gauge kits and rear leveling
plates. Rear slip plates are not available.
Alignment kit is not rollback compatible.

**Front wheel
stops** can easily be
replaced by optional
drive through ramps

Rotary DESIGN ADVANTAGE

SM30 Four-Post

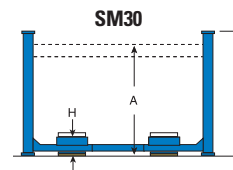
PRODUCTIVITY & PERFORMANCE

1. PATENTED SENTINEL LOCKING SYSTEM
2. MULTIPLE RUNWAY LENGTHS
3. ADJUSTABLE RUNWAY SPACING
4. THIRD-PARTY ETL GOLD CERTIFIED

SM30 LIFT SPECIFICATIONS

Model:	SM30S SM30L SM30EL
Maximum Wheelbase*	S 235" (5969mm) L 271" (6883mm) EL 307" (7798mm)
A. Rise / Floor to top of runway	68" (1727mm)
B. Length Overall	S 25' 8 1/8" (7826mm) L 28' 8 1/8" (8741mm) EL 31' 8 1/8" (9655mm)
C. Width Overall	12' 6" (3811mm)
D. Inside of Columns	133" (3378mm)
E. Between Columns	S 249" (6325mm) L 285" (7239mm) EL 321" (8153mm)
F. Height of Columns	7' 3/4" (2153mm)
G. Width of Runways	24" (610mm)
H. Height of Runways	8 3/4" (222mm)
I. Width Between Runways (min.)	42" (1067mm)
J. Width Between Runways (max.)	48" (1219mm)
K. Length of Runways	S 248 1/2" (6312mm) L 284 1/2" (7226mm) EL 320 1/2" (8141mm)
Lifting Capacity	30,000 lbs. (13608kg)
Motor	4 HP
Voltage Single Phase †	208v-230v
Time of Full Rise	105 seconds
Min. Bay Size	S 16' x 30' (4877 x 9144mm) L 16' x 33' (4877 x 10059mm) EL 16' x 36' (4577 x 10973mm)

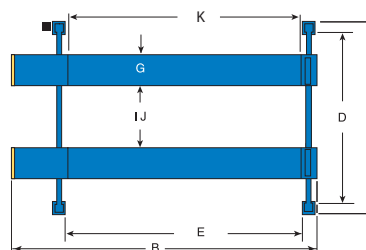
S = Shorter length **L** = Standard length **EL** = Extended length



† Optional 3-phase electrical available

Standard color of lifts are
blue and red. Additional
colors maybe available
- consult your Rotary®
representative for details
and pricing.

RAL5005
RAL3002



HDC36 HEAVY-DUTY RUNWAY LIFT

PRODUCTIVITY AND PERFORMANCE IN A DRIVE ON LIFT

Make sure your shop is ready for more business servicing larger vehicles with ease. Technicians can work quicker and more efficiently with a level peace of mind. And, raise your fleet faster with an industry best rise time of 68 seconds!

LOWER YOUR COST OF OWNERSHIP

This stout four post lift will lift big box trucks, single axle dump trucks all the way down to your shop tool truck. The HDC36 allows you to operate the lift from any column, saving valuable time. DC battery operated with an onboard charger that needs only 110v electricity to charge, this affordable four post lift is easy to operate and inexpensive to own.

ENVIRONMENTALLY FRIENDLY FEATURES

Surface mounted and anchored, it requires no excavation

Optional high efficiency LED lighting saves electricity and money over comparable incandescent and fluorescent lighting

Bio fluid ready



DESIGN FEATURES

- 28" wide runways with two available lengths and capacities handle any number of vehicles from cars to the largest trucks
- Clear floor four-post design creates an open work area
- 79" lifting height benefits the tallest techs
- Standard internal airline connections let two rolling jacks operate simultaneously and provides outlets for air tools
- Optional wheel kit is available to provide portability for each column adding movement within your shop.

BATTERY OPERATED LIFT WITH ONBOARD CHARGER

- Generates at least 1.5 X faster lift cycle times
- No special AC wiring costs or requirements
- Low electrical usage - *DC battery power** and 110V charging
- Fully functional when the power goes out

* Battery purchased separately for international use

INVERTED HYDRAULIC CYLINDER

The hydraulic cylinder is inverted inside the carriage so the chrome piston rod is protected from debris and damage - extending the life of the column and reducing maintenance frequency and cost. No lifting cables or chains means less maintenance.



WHEEL CHOCKS

Automatic wheel chocks engage when the lift is raised and ramps are off the floor



ANCHORED COLUMN SUPPORT

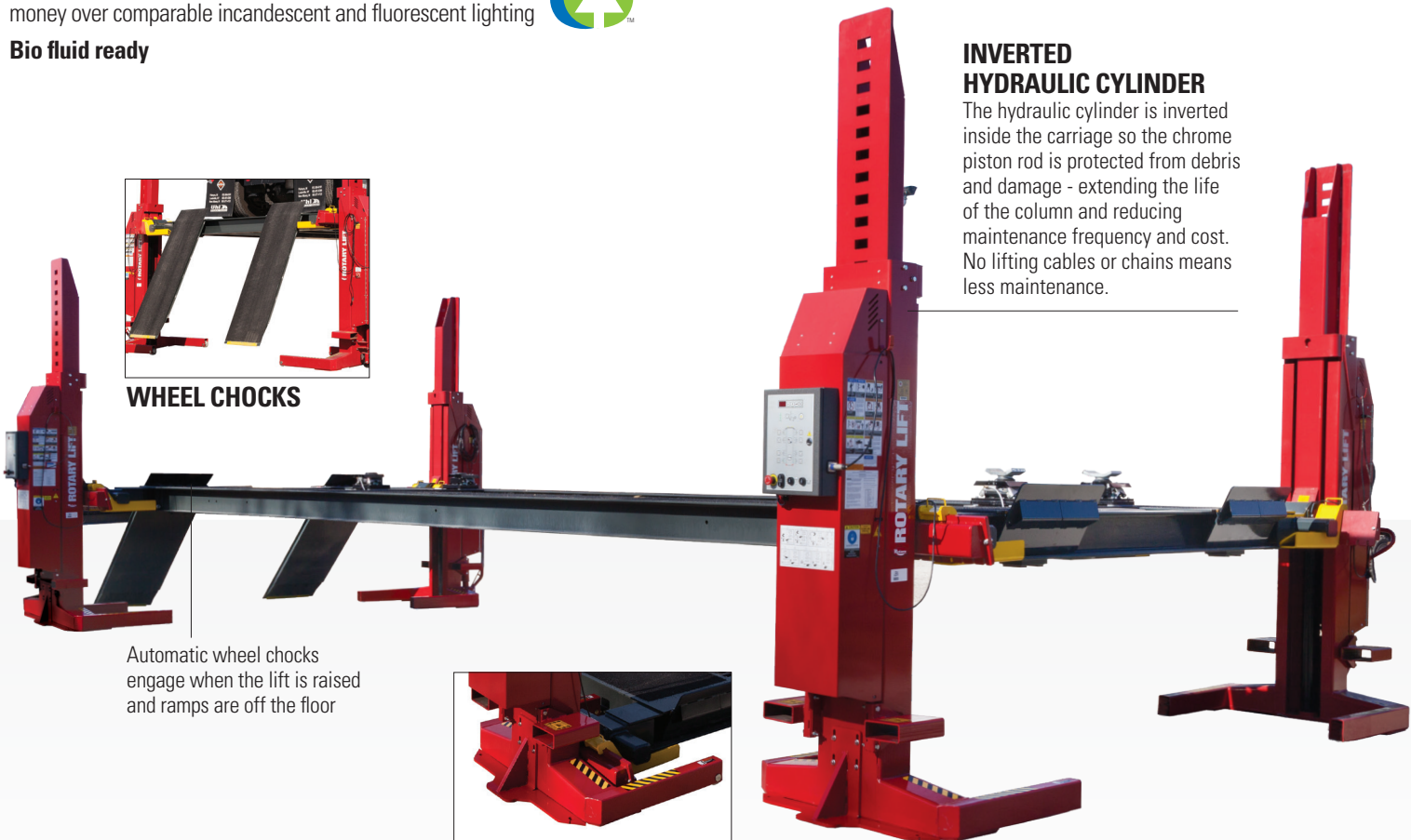
Four easy to install wedge style anchors secure each heavy duty column to the floor

Shown: HDC36U000
35,900 lbs. capacity
Shown with optional rolling jacks



HORSESHOE WIRING

The HDC is connected by three communication cables, (forming a horseshoe) protected within the lift runways.



Rotary® DESIGN ADVANTAGE


HDC Four-Post PRODUCTIVITY & PERFORMANCE

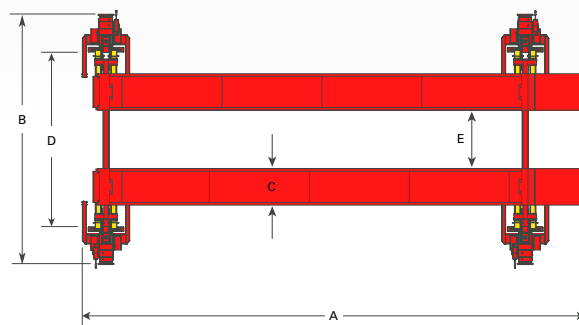
1. **PATENTED CONTROLS FOR ACTIVE LEVELING**
2. **DC POWER - PROVIDES SPEED**
3. **DIRECT CYLINDER LIFTING**
4. **THIRD-PARTY ETL GOLD CERTIFIED**

HDC 36 LIFT SPECIFICATIONS *

Model:	HDC36	HDC36L
Lifting Capacity	35,900 lbs. (16,283kg)	
Maximum Wheelbase	25' (300" / 7,620mm) 30' (360" / 9,144mm)	
Max. Rise / Floor to top of runway	79" (2,007mm)	
A. Length Overall	33' 11-3/4" (10,358mm) 38' 11-3/4" (11,882mm)	
B. Width Overall - outside controls	16' 3-3/8" (4963mm)	
Height of Columns when raised	89" (2260mm)	
C. Width of Runways	28" (711mm)	
D. Drive Thru Between Columns	12'-4" (3607mm)	
E. Runway Spacing	45" (1143mm)	
Rise Time	68 seconds	
Ramp Angle	7 degrees	
Power Usage	Battery powered Charges on 110V	

*BOTH 25' AND 30' RUNWAY LENGTH MODELS ARE AVAILABLE AS 35,900 LBS. CAPACITY LIFTS

Standard color of HDC36 lifts are red.  RAL3002
Additional colors maybe available
- consult your Rotary® representative for details and pricing.

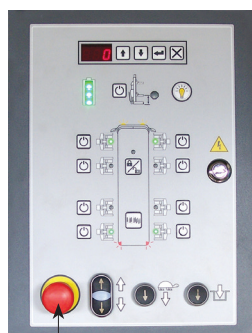


Shown: HDC36U000
35,900 lbs. capacity
Shown with optional rolling jacks

PATENTED CONTROL SYSTEM

Operate lift from **ANY** post with this user-friendly, exclusive control system

- Intuitive controls - lift can be controlled from ANY column
- Position memory - lifting cycles are configured and set creating a two step process: turn each column on, lock the columns and go!
- Programmable controls show operational status for each column plus, program a height limiter
- Real time height reading
- Ability to raise or lower a single end
- Level lifting within 1" at each column
- Battery Indicator
- Oversized E-Stop button located at each panel
- Audible descent alarm for added safety



E STOP Button

THIRD PARTY CERTIFIED

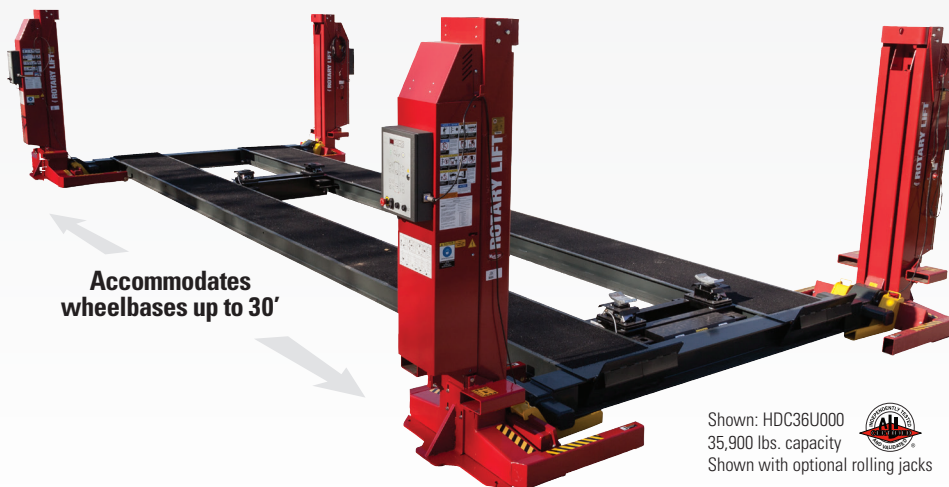
The HDC Series lifts meet the ANSI/ALI ALCTV 2011 standard, including the required third-party validation. Your assurance of certification is the gold ALI/ETL certified label.



LOW DRIVE-ON HEIGHT

Ramps and runways accommodate a variety of vehicle types. Optional drive thru ramp kit available.

Add optional **rolling bridge jacks** and increase your service opportunities by lifting wheels off the runways for two-wheel alignment work.



Accommodates wheelbases up to 30'

Shown: HDC36U000
35,900 lbs. capacity
Shown with optional rolling jacks

HDC50/60 HEAVY-DUTY RUNWAY LIFT

THE MOST VERSATILE AND FASTEST FOUR-POST LIFT IN THE INDUSTRY

Operator friendly designs and industry exclusive features offer you a drive-on four post lift that's easier to use and faster than similar competitive lifts.

LOWER YOUR COST OF OWNERSHIP

With no complicated or expensive electrical installation, no cables, chains or sheaves to maintain and fewer moving parts, the fully hydraulic HDC50/60 is one of the most dynamic four-post lifts in the industry! DC battery operated with an onboard charger that needs only 110v electricity to charge, this affordable four post lift is easy to operate and inexpensive to own. Choose the lift model that fits your needs best - both runway lengths are available in both lifting capacities!

ENVIRONMENTALLY FRIENDLY FEATURES

Surface mounted and anchored, it requires no excavation

Optional high efficiency LED lighting saves electricity and money over comparable incandescent and fluorescent lighting

Bio fluid ready



INVERTED HYDRAULIC CYLINDER

The hydraulic cylinder is inverted inside the carriage so the chrome piston rod is protected from debris and damage - extending the life of the column and reducing maintenance frequency and cost. No lifting cables or chains means less maintenance.

WHEEL CHOCKS

Automatic wheel chocks engage when the lift is raised and ramps are off the floor

DESIGN FEATURES

28" wide runways with two available lengths and capacities handle any number of vehicles

Clear floor four-post design creates an open work area free of interference

Industry best rise time of 65 seconds

78" lifting height benefits the tallest techs

Standard internal airline connections let two rolling jacks operate simultaneously and provides outlets for air tools

PATENTED CONTROL SYSTEM

Operate lift from ANY post with this user-friendly, exclusive control system

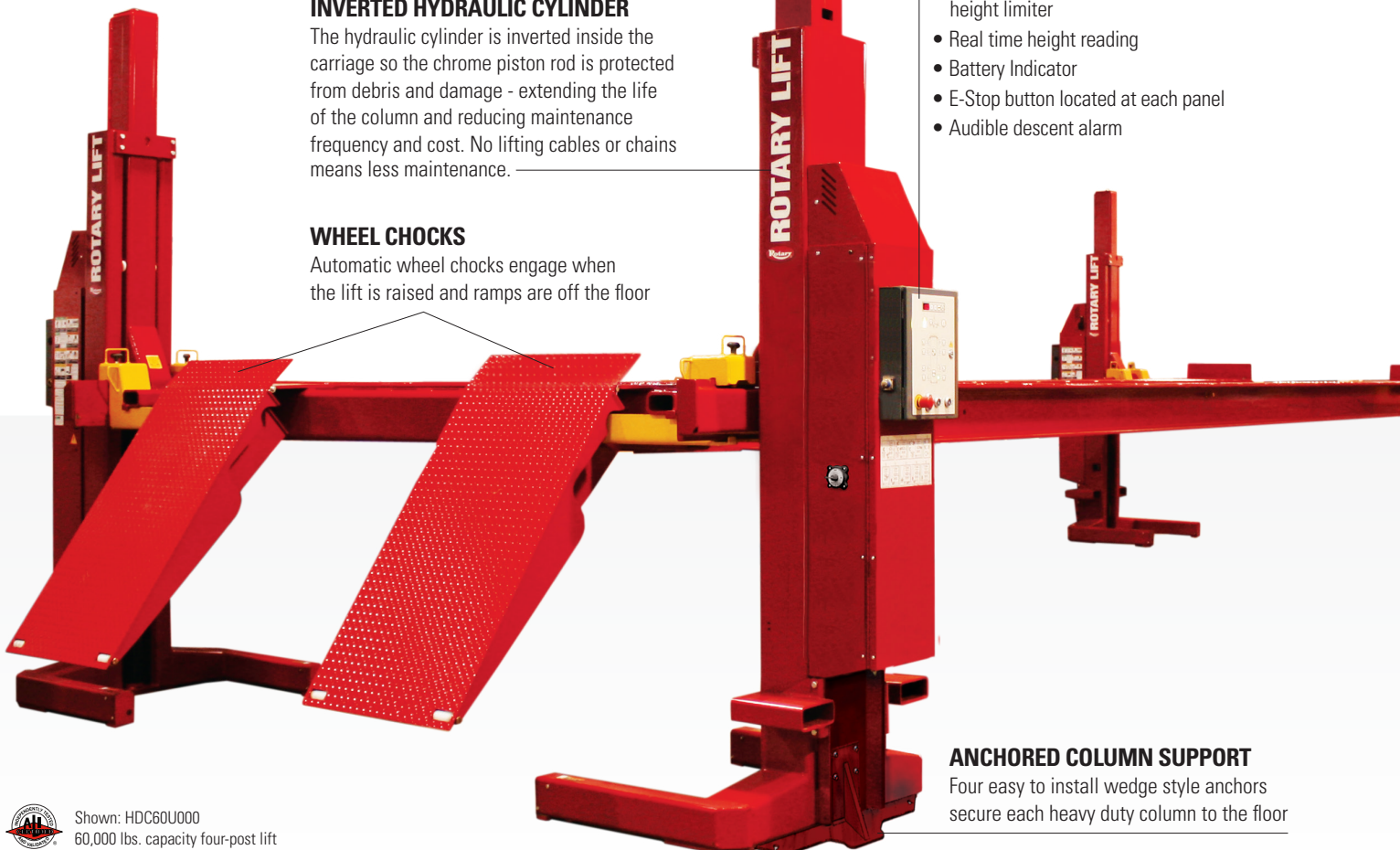
Position memory - lifting cycles are configured and set creating a two step process: turn each column on, lock the columns and go!



- Programmable controls show operational status for each column plus, program a height limiter
- Real time height reading
- Battery Indicator
- E-Stop button located at each panel
- Audible descent alarm

ANCHORED COLUMN SUPPORT

Four easy to install wedge style anchors secure each heavy duty column to the floor



Shown: HDC60U000
60,000 lbs. capacity four-post lift

BATTERY OPERATED LIFT WITH ON-BOARD CHARGERS

- Generates faster lift cycle times
- *at least 1.5 X faster than comparable lifts*
- No special AC wiring costs or requirements
- Low electrical usage
- *DC battery power* and 110V charging*
- Fully functional when the power goes out

* Battery purchased separately for international use

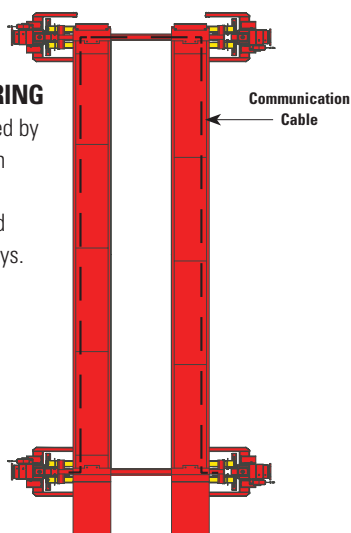
THIRD PARTY CERTIFIED

The HDC Series lifts meet the ANSI/ALI ALCTV 2011 standard, including the required third-party validation. Your assurance of certification is the gold ALI/ETL certified label.



HORSESHOE WIRING

The HDC is connected by three communication cables, (forming a horseshoe) protected within the lift runways.



Rotary DESIGN ADVANTAGE HDC Four-Post PRODUCTIVITY & PERFORMANCE

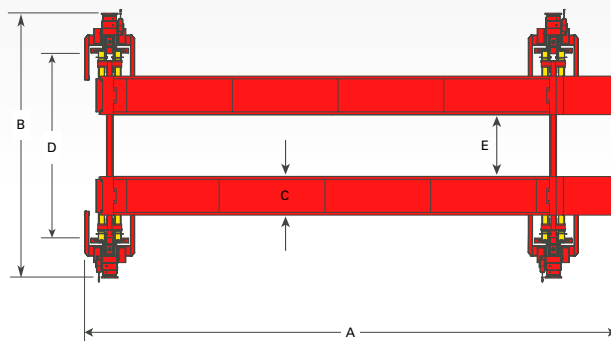
1. **PATENTED CONTROLS FOR ACTIVE LEVELING**
2. **DC POWER - PROVIDES SPEED**
3. **DIRECT CYLINDER LIFTING**
4. **THIRD-PARTY ETL GOLD CERTIFIED**

HDC 50 / 60 LIFT SPECIFICATIONS *

Model:	HDC50	HDC60
Lifting Capacity	50,000 lbs. (22679kg)	60,000 lbs. (27215kg)
Maximum Wheelbase	28' (336" / 8534mm)	33' (396" / 10058mm)
Max. Rise / Floor to top of runway	78" (1981mm)	78" (1981mm)
A. Length Overall	35' 7-1/2" (10858mm)	40' 7-1/2" (12382mm)
B. Width Overall - outside controls	15' 11" (4851mm)	15' 11" (4851mm)
Height of Columns when raised	144 - 3/4" (3677mm)	144 - 3/4" (3677mm)
C. Width of Runways	28" (711mm)	28" (711mm)
D. Drive Thru Between Columns	11'-10" (3607mm)	11'-10" (3607mm)
E. Runway Spacing	45" (1143mm)	45" (1143mm)
Rise Time	65 seconds	65 seconds
Ramp Angle	10 degrees	10 degrees
Power Usage	Battery powered Charges on 110V	Battery powered Charges on 110V

*BOTH 28' AND 33' RUNWAY LENGTH MODELS ARE AVAILABLE AS 50,000 AND 60,000 LBS. CAPACITY LIFTS

Standard color of HDC50 / 60 lifts are red.  Additional colors may be available - consult your RAL3002 Rotary® representative for details and pricing.



Add optional **rolling bridge jacks** and increase your service opportunities by lifting wheels off the runways for two-wheel alignment work.

LOW DRIVE-ON HEIGHT

Ramps and runways accommodate a variety of vehicle types. Optional drive thru ramp kit available.

SERVICE WHEELBASES UP TO 33'



Shown: HDC60U000
60,000 lbs. capacity four-post lift





OPTIONAL LIFT ACCESSORIES

Increase bay productivity with these drive-on lift accessories

TECH LIGHT™ Line Light 4 LED Lighting Kit

Attach the four 54" light wands to runways for effective, efficient lighting where you need it.

- 120V AC input voltage
- 60hz



#FA5700 Lighting unit includes 60W power supply unit, 16' cable lengths and 8 magnetic suspensions

Rolling Jacks

Increase your service opportunities by lifting front, rear or all wheels off the runways for brake, tire, suspension and two or four-wheel alignment work. **Contact factory for additional details and options**



#RJ6000Y
SM14 / SM014 lifts
6,000 lbs. capacity



#RJ7000Y
SM14 / SM014 lifts
7,000 lbs. capacity



#RJ9000YBK / #RJ9000Y-1BK
#RJ9000Y-2BK
SM18 / SM30 lifts
9,000 lbs. capacity



#RJ150BK
#RJ152BK
Lower profile w/ drop in adapters
SM30 lifts
15,000 lbs. capacity



#RJ14000LBL
14,000 lbs. capacity
#RJ22001LBK
22,000 lbs. capacity
#RJ25001LBK
25,000 lbs. capacity
#RJ30001LBK
30,000 lbs. capacity
HDC 36/50/60 lifts

Air / Utility Box

Mounts easily on any column and provides quick access to utilities

- Two 110v electric outlets and air connection
- The filter/regulator/lubricator helps extend the life of your air tools

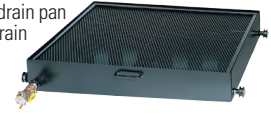


#FA915 KIT

Oil Drain Pan

Available for most lifts, drain pan includes splash guard, drain valve and dust cap.

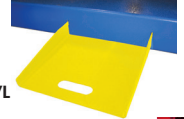
CONSULT FACTORY FOR OPTIONS



Removable Work Steps

Fits 14K and 18K four-post lifts with slots on sides of runways as shown.

#FC5663YL



Internal Airline Kit

Standard Internal airline connections let two rolling jacks operate simultaneously, and provides air outlet on the runway.

Internal airline kit #FC5760-14 not available for 30,000 to 60,000 lbs. capacity lifts. Consult factory for details.



#FC5760-14

Swing Air Jacks

6,000 lbs. and 8,000 lbs. capacity swing air jacks pivot and lay flat between the runways when not in use.

#SJ6000 and #SJ8000 SM / AR SERIES Lifts accessory



Drive-On Standard/Optional Lift Features

FEATURE	Standard Feature ● Optional Feature ○	X14 14,000 lbs.	SM14 14,000 lbs.	SM014 14,000 lbs.	SM18 18,000 lbs.
ALI Certified	●	●	●	●	●
Open front or open rear design		Open front and rear	Closed front	Open front	Closed front
Recessed installation	○		N/A	N/A	N/A
SHOCKWAVE™ Equipped models		N/A	○	○	N/A
Power unit on front column		N/A	●	●	●
Single point lock release	●	●	●	●	●
Cylinder located under the runway	●	●	●	●	●
Dual function Sentinel Lock™ System		N/A	●	●	●
Air filter / regulator / lubricator	○		●	●	●
Air / Electric utility box	○		○	○	○
Multiple runway lengths available	○		○	○	○
Adjustable runway spacing		N/A	○	N/A	○
Adjustable locking latch bars		N/A	●	●	●
One piece runway		N/A	●	●	●
Internal airline kit	○		○	○	○
Rolling jacks available	○		○	○	○
Converts to alignment lift	○		○	○	○
Drive-thru conversion	○		○	○	○
Lower profile extended ramps	○		○	○	○

Bolt-On Alignment Kits

Convert your general service four-post lift into an alignment lift that is compatible with the new technology 3-D alignment equipment on the market today. Comes with stainless steel turning radius gauges.

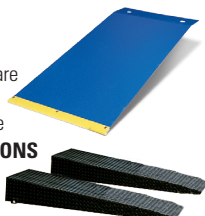
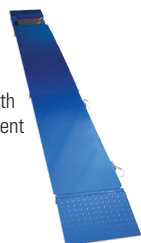
CONSULT FACTORY FOR OPTIONS

Ramp Kits

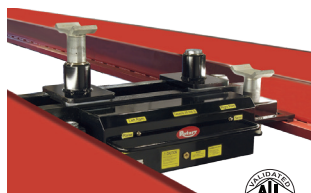
Allows for drive-thru capability

- Oil resistant, non-skid coating
- Includes two ramps and hardware
- Extended length ramps for low clearance vehicles available

CONSULT FACTORY FOR OPTIONS



HDC SERIES HEAVY DUTY LIFT ACCESSORIES



Optional Rolling Jacks

Air operated rolling jacks can be attached to the runways creating various lifting options to make these lifts even more versatile.



#M140111RD

Mobility Kit

Optional wheel kit is available to provide portability for each column adding movement within your shop.

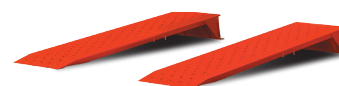
Optional LED Lighting

High-efficiency LED runway and column-mounted lighting systems. These easy-to-use lighting systems provide hands-free, effective lighting under the vehicle.

CONSULT FACTORY FOR OPTIONS

Drive-Thru Ramp Kit

Adding a drive-thru ramp kit creates a quick and easy on-off service operation for service bays.



#M140099RD
10' (3048mm) drive-thru ramp kit

Drive-On Standard/Optional Lift Features

FEATURE	Standard Feature ●	SM30 30,000 lbs.	HDC36 35,900 lbs.	HDC50/60 50,000 lbs. / 60,000 lbs.
	Optional Feature ○			
ALI Certified		●	●	●
Open front or open rear design		Closed front	Closed front	Closed front
Recessed installation		N/A	N/A	N/A
SHOCKWAVE™ Equipped models		N/A	N/A	N/A
Power unit on front column		N/A	All four posts	All four posts
Single point lock release		●	●	●
Cylinder located under the runway		●	Located in columns	Located in columns
Dual function Sentinel Lock™ System		●	N/A	N/A
Air filter / regulator / lubricator		○	N/A	N/A
Air / Electric utility box		○	N/A	N/A
Multiple runway lengths available		●	●	●
Adjustable runway spacing		●	N/A	N/A
Internal airline kit		○	●	●
Rolling jacks available		○	○	○
Converts to two-wheel alignment lift *Can be used with heavy duty turnplates. Consult factory for more information.		○	*	*
Drive-thru conversion		○	○	○
Extended ramps		○	○	○



LIFT APPLICATION GUIDE



VEHICLE CLASS

GVW:
Gross Vehicle Weight



CLASS 1

Under 6,000 lbs. GVW



CLASS 2

6,001 to 10,000 lbs. GVW



CLASS 3

10,001 to 14,000 lbs. GVW



CLASS 4

14,001 to 16,000 lbs. GVW



CLASS 5

16,001 to 19,500 lbs. GVW



CLASS 6

19,501 to 26,000 lbs. GVW



CLASS 7

26,001 to 33,000 lbs. GVW



CLASS 8

33,001 lbs. and over GVW

	6,000 lbs.	7,000 lbs.	10,000 lbs.	8,000 lbs.	10,000 lbs.	12,000 lbs.	7,000 lbs.	10,000 lbs.	12,000 lbs.	16,000 lbs.	20,000 lbs.	12,000 lbs.	14,000 lbs.	18,000 lbs.	30,000 lbs.	35,000 lbs.	50,000 lbs.	60,000 lbs.	52,000 lbs.	72,000 lbs.	78,000 lbs.	108,000 lbs.	144,000 lbs.	30,000 lbs.	36,000 lbs.	45,000 lbs.	50,000 lbs.	75,000 lbs.	100,000 lbs.	60,000 lbs.	70,000 lbs.	90,000 lbs.	105,000 lbs.
CLASS 1	•	•	•	•	•	•	•	•	•	•	•	•	•	•	•	•	•	•	•	•	•	•	•	•	•	•	•	•	•	•	•	•	•
CLASS 2			•		•	•			•	•	•	•	•	•	•	•	•	•	•	•	•	•	•	•	•	•	•	•	•	•	•	•	•
CLASS 3										•	•	•		•	•	•	•	•	•	•	•	•	•	•	•	•	•	•	•	•	•	•	•
CLASS 4											•	•			•	•	•	•	•	•	•	•	•	•	•	•	•	•	•	•	•	•	•
CLASS 5												•			•	•	•	•	•	•	•	•	•	•	•	•	•	•	•	•	•	•	•
CLASS 6															•	•	•	•	•	•	•	•	•	•	•	•	•	•	•	•	•	•	•
CLASS 7															•	•	•	•	•	•	•	•	•	•	•	•	•	•	•	•	•	•	•
CLASS 8																•	•	•	•	•	•	•	•	•	•	•	•	•	•	•	•	•	•

NOTE: This reference guide indicates that the noted lift is applicable to the vehicle based on typical vehicle weights, lengths and wheelbases. All information should be verified before purchasing a lift.



Rotary Lift

2700 Lanier Drive
Madison, IN 47250, USA



www.rotarylif.com

North / South America Contact Information

Sales: p 800.640.5438
e userlink@rotarylif.com
Tech. Support: p 800.445.5438
e techlink@rotarylif.com

Global Contact Information

USA: 1.812.273.1622
Canada: 1.905.812.9920
Latin America / Caribbean: 1.812.273.1622
Brazil: +55.11.4534.1995

Assistance for Government Purchasing

Government Sales: 800.445.5438 X5655



FSS Contract No. GS07F294AA



formerly WSCA-NASPO
Contract No. 05316

Contract No. 061015-RRL



Lit# Rotary_Drive On Runway Brochure_2018.11
(Supersedes Lit# Rotary_Drive On Runway Brochure_2018.08)

©2018 VEHICLE SERVICE GROUPSM. Printed in U.S.A., All Rights Reserved.
Unless otherwise indicated, ROTARY LIFT, VEHICLE SERVICE GROUPSM, DOVER
and all other trademarks are property of Dover Corporation and its affiliates.

Intuitive Control Console / Wireless Column Communication
HDC50/60 lifts are manufactured using the following patents:
(U.S. Patent No. 6983196 / U.S. Patent No. 8083034)

Sentinel LockSM System (U.S. Patent No. 6,446,757)

Bolt-On Alignment Kit Spacer Plate with enclosed pockets: (U.S. Patent No. D740742)