

**First Line Technologies**

3656 Centerview Dr. Jason Hamm  
Chantilly VA 20151 703-955-7510  
jhamm@firstlinetech.com



Picture is from a similar vehicle

Qty: 1

## 2020 StarTrans President with a Freightliner S2C 0 passenger & driver

Engine: 6.7L  
Wheelbase: 300  
GVWR: 25850

### Standard Chassis Equipment

Freightliner S2C Cummins 6.7L Diesel 240 hp 25,850 GVWR  
Allison Transmission 2200 PTS  
Rear Axle Ratio 5.22  
Bosch Hydraulic Pin-Slide Disc Front & Rear Brakes  
Leece Neville 270 Amp Alternator is Standard  
Rear Air Suspension  
Engine Block Heater  
TRW Power Steering  
Front Tow Hooks  
Front Mud Flaps  
Chrome Fender  
Fuel Tank - 60 Gallon  
Tires - Michelin XZE 235/80R 22.5 x 7.50 10 Hub 14 Ply  
Daytime Running Lights  
Mirrors - Dual West Coast Molded-In Color w/ 8" Convex  
Driver Seat - Bostrom Talladega 910 High Back Air Suspension  
Adjustable Tilt Steering Wheel  
Cruise Control  
Batteries - Group 31 (2) Alliance Model 1131 1900 cca  
Battery Box Framed Mounted  
Drive Shaft Guard  
Driver's Door Power Window & Lock  
Wood Grain Dash Instrument Panels  
OEM Battery Disconnect Switch

### Standard Body Equipment

Fully welded steel cage construction with laminated sidewall structure.  
"Starview" drivers visibility window in front of entry door.  
Electric actuated passenger entry door with full length glass.  
Rear mud flaps.

Black powder coated steel rear bumper.  
Fiberglass front and rear caps.  
Pre-painted white galvanized steel sidewalls and skirts.  
One piece seamless FRP roof.  
Breakaway rearview mirrors with built in convex.  
Sealed LED stop, tail and turn signal lights. LED reverse lights.  
LED front and rear marker lights.  
LED exterior skirt mounted entry door light.  
93" interior floor width.  
81" interior floor to ceiling height with standard flat floor.  
Floor and wall seat track for flexible seating.  
Black slip-resistant flooring.  
5/8" exterior grade plywood flooring.  
Ceiling and rear wall fabric for sound abatement.  
FRP sidewalls.  
White step nosing.  
1.25" left hand vertical passenger assist rail at entry door.  
Printed circuit board w/automotive type fuses & LED trouble shooting light.  
LED entry door step well lights.  
LED driver and passenger area lighting.  
36" wide x 36" high upper T-sliders.  
Tempered safety glass windows with climate control tint.  
Back-up Camera System w/7" Rearview Monitor/Mirror Combo

**Body and Chassis Standard Equipment is subject to change without notice and may be replaced by Options Included on next page.**

### First Line Technologies

3656 Centerview Dr. Jason Hamm  
Chantilly VA 20151 703-955-7510  
jhamm@firstlinetech.com

## Options Included

### ACC Climates Control Freightliner 240 HP A/C

R236516 70K FrtlNr 6.7L 23023 Evap, 25065 Cond, 10 CID Comp

### Chassis

\*\*No Seat Tracking on Floor or Walls  
Freightliner Rear 23,000 Airliner Suspension  
\*\*No Side Passenger Area Windows

### Doors/ Hatch / Windows

Rear Door, No Window (Std Left Hand Hinge)  
Passenger Door - Electric (Standard)  
Exterior Passenger Entrance Door Key  
Passenger Door 36" Rough Opening (Standard)

### Electrical

Note: Mount Two of the Speakers in Front Bulkhead  
Deluxe Am/FM/CD with Clock & 4 Speakers, PA Ready  
(4) Additional Speaker(s), Each

### Exterior

LED Mid-Ship Turn / Marker Lights (Required 30' and Longer)  
LED Rear Center Mount Brake Light, Rectangular

### Heaters

Insulate Heater Hoses  
Hot Water Heater, 65K BTU - Floor Mounted

### Interior

Right Hand Entry Vertical Grab Rail - 1 1/4"  
Stanchion and Modesty Panel Behind Driver  
1 1/4" Grab Rail Parallel to Entrance Steps (Both sides)  
Door Activated Interior Lights  
(4) Additional Interior LED Dome Lamp - Each

### Safety Options

5 Lb Fire Extinguisher

16 Unit First Aid Kit  
Back-Up Alarm SAE Type C 97 db(A)  
Interior Convex Mirror 6" x 9"  
Emergency Triangle Kit

Terms: COD

Valid For:

Delivery:



Sales Rep.

Purchaser

Fed Tax ID #

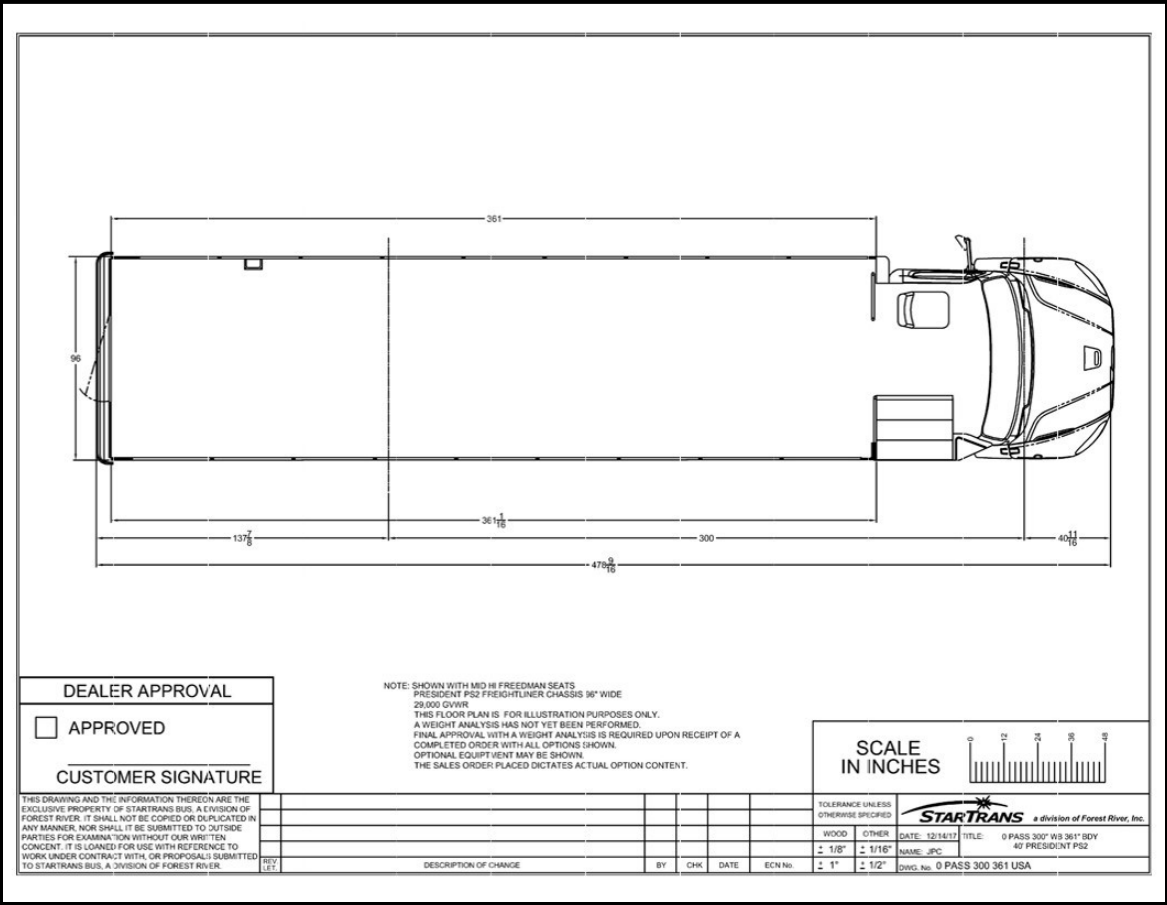
Date

**First Line Technologies**

3656 Centerview Dr. Jason Hamm  
Chantilly VA 20151 703-955-7510  
jhamm@firstlinetech.com

**Trades**

**Floorplan**













**TESCO**  
Transportation Equipment Sales Corp.  
TESCO Transportation LLC  
6401

THIS IS NOT A STEP

THANKS



