

rausch USA

minCam Catalog

Push Camera Systems

Pan & Tilt Push System

Well Cameras

rauschusa.com/minCam/





minCord

Our smallest system weighs approx. 2.5 lbs. and includes our smallest camera, the 0.51" KK13, and highly flexible Push-Pull rod.

Application range: 0.6" to 3"

\$6,360.00



mc15 System

Open cage reel for maneuverability in small diameter and tight-turn radius inspections. Featuring a 0.71" KK18 camera and 5.6 mm push cable.

Application range: 1 2" to 5"

\$8,520.00



mc30 System

The mc30 system features our smallest self-leveling camera, the 1" diameter KK29SL, and 6.7mm push cable.

Application range: 1 6" to 8"

\$12,720.00



mc50 System

The mc50 system includes the KK55SL 2" self-leveling camera and rigid 9.2mm push cable to cover standard pipe sizes.

Application range: 3" to 16"

\$15,240.00



mc80 System

The mc80 is our long-distance system equipped with 400 feet of 11.2mm push cable and the KK55SL 2" self-leveling camera for manhole-to-manhole inspections.

Application range: 4" to 16"

\$15,960.00



mc30 Duo System

Our unique dual-reel mc30 Duo has two reels in one system and two cameras for each reel. Equipped with the KK13 and the 1.1" self-leveling camera, KK29SL.

Application range: 0.6" to 8"

\$16,860.00



mc50 Duo System

The dual-reel mc50 Duo covers the broadest range of all of our systems with two reels and two cameras in one system: the KK29SL and the KK55SL.

Application range: 1 6" to 16"

\$21,780.00



minCam360 Pan & Tilt

Our pan & tilt push system is our most advanced push camera. Equipped with a 2" camera which can push through 90° bends in 4" and see the entire pipe.

Application range: 3" to 16"

\$26,520.00

rausch_{USA}

minCam Advanced Push Systems

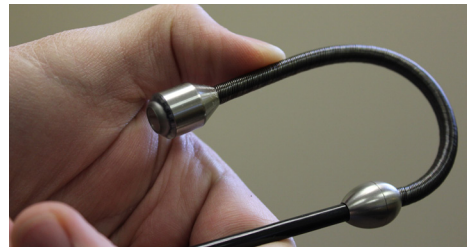
Rausch USA has partnered with minCam to offer their industrial grade push camera system. The minCam push systems are available in four series:

- minCord Series - small, hand-held system with 1/2" camera
- mc Series - basic single-reel camera systems with four different cable/camera combos for a wide variety of applications
- mc Duo Series - feature a dual reel/camera design, replacing two different systems for unique applications by combining them into a single system
- minCam360 - Pan & tilt push camera with 4-step digital zoom and dual-band sonde

minCam

Notes:

www.rauschusa.com/minCam/



minCord Push Camera

The minCord is our most compact push camera system. It utilizes a 0.51" (13mm) diameter color camera, the KK13. The minCord only weighs 2.5 lbs. and is easy to carry.

System Specifications

- Shatterproof plastic housing / spool
- 50 ft. (15m) of flexible Push/Pull cable (up to 100 ft.)
- Ultra-flexible Vario cable to navigate 90-degree bends
- Power Supply: DC 5.5V wall power supply
- Battery: 2100 mA, for more than 2.5 hours operation
- Dimensions: 9" x 11" x 4"
- Weight: 2.5 lbs.
- 512 Hz sonde standard (33 kHz special order)
- Monitor is mounted directly onto the cable reel spool



Monitor & Recording

- 3.5" TFT LCD monitor in aluminum housing
- SD card reader to record video, images, and voice
- Max 4 GB
- AV in/out
- Mini-USB port and cable included
- MPEG-4 Video (.avi 768x576); Pictures (.jpg 704x528)

KK13 Camera

Range	0.6" - 3" (15-80mm)
Lighting	12 pcs LEDs
Cable	Push/Pull cable
Lens	1mm sapphire glass
Water Tight	Up to 43.5 psi
Outer diameter	0.51" (13mm)
Cylindrical length	0.31" (10mm)



mc15 System

The mc15 is a compact and durable CCTV push camera system. Equipped with KK18 camera for maneuverability in small diameter and tight-turn radius inspections. Includes 512 Hz sonde.

System Specifications

- 100 ft. (30m) of flexible 5.6mm push cable
- 512 Hz sonde standard (33 kHz special order)
- Electronic on-screen distance counter
- Lithium Ion battery for more than 2 hours operation
- Power Supply: 100 - 240V AC; 12V DC Car adapter
- Lightweight stainless steel and carbon reel cage
- Control unit: On/off switch, light regulation, distance counter reset, battery level LEDs, BNC video out
- Mechanical reel brake
- Weight: 17 lbs.; Dimensions: 14" x 16" x 9" (L x H x W)

Monitor & Recording

- 5.6" TFT LCD monitor records video, voice, and photo
- Remote control for recording and system operation
- Ball joint attachment to reel
- SD card reader, max 32 GB for approx. 20 hours of video
- MPEG-4 Video (.avi, 800x600); Pictures (.bmp 640x480)
- External Qwerty keyboard available (special order)

KK18 Camera

Range	1 2" - 5" (30-125mm)
Video Quality	High-resolution 480 TVL
Lighting	10 pcs LEDs
Lens	2mm sapphire glass
Water Tight	Up to 72.5 psi (5 bar)
Outer diameter	0.71" (18mm)
Cylindrical length	0.39" (10mm)

mc30 System

The mc30 features our smallest auto-upright camera, the 29mm (1.14") KK29SL, connected to 6.7mm push cable. Application range is 2" to 8" Includes 512 Hz sonde standard.

System Specifications

- 100 ft. (30m) of fiberglass 6.7mm push cable
- 512 Hz sonde standard (33 kHz special order)
- Electronic on-screen distance counter
- Lithium Ion battery for more than 2 hours operation
- Power Supply: 100 - 240V AC; 12V DC Car adapter
- Lightweight stainless steel and carbon reel cage
- Control unit: On/off switch, light regulation, distance counter reset, battery level LEDs, BNC video out
- Mechanical reel brake
- Weight: 20 lbs.; Dimensions: 17" x 19" x 9" (W x H x D)



Monitor & Recording

- 5.6" TFT LCD monitor records video, voice, and photo
- Remote control for recording and system operation
- Ball joint attachment to reel
- SD card reader, max 32 GB for approx. 20 hours of video
- MPEG-4 Video (.avi, 800x600); Pictures (.bmp 640x480)
- External Qwerty keyboard available (special order)

KK29SL Auto-Upright Camera

Range	2" - 8" (50-200mm)
Video Quality	High-resolution 480 TVL
Lighting	10 pcs LEDs
Lens	3mm sapphire glass
Water Tight	Up to 145 psi
Outer diameter	1.14" (29mm)
Cylindrical length	0.63" (16mm)



mc50 System

The mc50 comes with the KK55SL, which can pass through 90° bends from 4" onwards and inspect pipe diameters up to 16" with the optional large roller upgrade. Includes 512 Hz sonde.

System Specifications

- 200 ft. (60m) of 9.2mm fiberglass push cable (up to 260 ft.)
- 512 Hz sonde standard (33 kHz special order)
- Electronic on-screen distance counter
- Lithium Ion battery for more than 1.5 hours operation
- Power Supply: 100 - 240V AC; 12V DC Car adapter
- Lightweight stainless steel and carbon reel cage
- Control unit: On/off switch, light regulation, distance counter reset, battery level LEDs, BNC video out
- Mechanical reel brake
- Weight: 35 lbs.; Dimensions: 25" x 26" x 12" (L x H x W)



Monitor & Recording

- 8.4" TFT LCD sunlight readable, records video, voice and photo
- Pelican® Storm Case heavy-duty housing
- Ergonomically attached to reel
- SD card reader, max 32 GB for approx. 20 hours of video
- MPEG-4 Video (.avi, 800x600); Pictures (.bmp 640x480)
- Integrated Qwerty keyboard available (special order)

KK55SL Auto-Upright Camera

Range	3" - 16" (70-400mm)
Video Quality	High-resolution 480 TVL
Lighting	16 pcs LEDs
Lens	4mm sapphire glass
Water Tight	Up to 145 psi
Outer diameter	2.17" (55mm)
Cylindrical length	1.42" (36mm)



mc80 System

The mc80 is our special long-distance push system constructed with wheels for easy handling. The manhole-to-manhole system features 425 feet of 11.2mm push rod and KK55SL camera.

System Specifications

- 425 ft. (130m) of 11.2mm fiberglass push cable
- KK55SL auto-upright color camera with 512 Hz sonde standard
- Electronic on-screen distance counter
- Lithium Ion battery for more than 3 hours operation
- Power Supply: 100 - 240V AC; 12V DC Car adapter
- Stainless steel and carbon reel cage
- Control unit: On/off switch, light regulation, distance counter reset, battery level LEDs, BNC video out
- 8.4" TFT LCD sunlight readable monitor; records video, voice and photo; mounted in a Pelican® Storm Case
- Mechanical reel brake
- Weight: 64 lbs.; Dimensions: 29" x 31" x 15" (L x H x W)





mc30 Duo System

The mc30 Duo offers a broad range of benefits in a single reliable and robust push system. The dual reel camera/cable combo replaces the need for two different systems for various applications.

System Specifications

- Outer reel: 100 ft. (30m) of 6.7mm fiberglass push cable
- Inner reel: 50 ft. (15m) of flexible Push-Pull cable
- 512 Hz sonde standard (33 kHz special order)
- Electronic on-screen distance counter
- Lithium Ion battery for more than 1.5 hours operation
- Power Supply: 100 - 240V AC; 12V DC Car adapter
- Lightweight stainless steel and carbon reel cage
- Control unit: On/off switch, light regulation, distance counter reset, battery level LEDs, BNC video out, "swap camera" lever
- Mechanical reel brake
- Weight: 31 lbs.; Dimensions: 17" x 19" x 9" (L x H x W)

Monitor & Recording

- 5.6" TFT LCD monitor records video, voice, and photo
- Remote control for recording and system operation
- Ball joint attachment to reel
- SD card reader, max 32 GB for approx. 20 hours of video
- MPEG-4 Video (.avi, 800x600); Pictures (.bmp 640x480)
- External Qwerty keyboard available (special order)

Cameras:

	KK29SL	KK13
Range	2" - 8" (50-200mm)	0.6" - 3" (15-80mm)
Video Quality	High-resolution 480 TVL	High-resolution 480 TVL
Lighting	10 pcs LEDs	12 pcs LEDs
Lens	3mm sapphire glass	1mm sapphire glass
Water Tight	Up to 145 psi	Up to 43.5 psi
Outer diameter	1.14" (29mm)	0.51" (13mm)
Cylindrical length	0.63" (16mm)	0.31" (10mm)

mc50 Duo System

The mc50 Duo features a dual reel/camera design to cover the broadest range. It replaces the need to use two different systems for unique applications by combining them into a single system.

System Specifications

- Outer reel: 200 ft. (60m) of 9.2mm fiberglass push cable
- Inner reel: 65 ft. (20m) of 6.7mm fiberglass push cable
- 512 Hz sonde standard (33 kHz special order)
- Electronic on-screen distance counter
- Lithium Ion battery for more than 1.5 hours operation
- Power Supply: 100 - 240V AC; 12V DC Car adapter
- Lightweight stainless steel and carbon reel cage
- Control unit: On/off switch, light regulation, distance counter reset, battery level LEDs, BNC video out, "swap camera" lever
- Mechanical reel brake
- Weight: 47 lbs.; Dimensions: 25" x 26" x 12" (L x H x W)

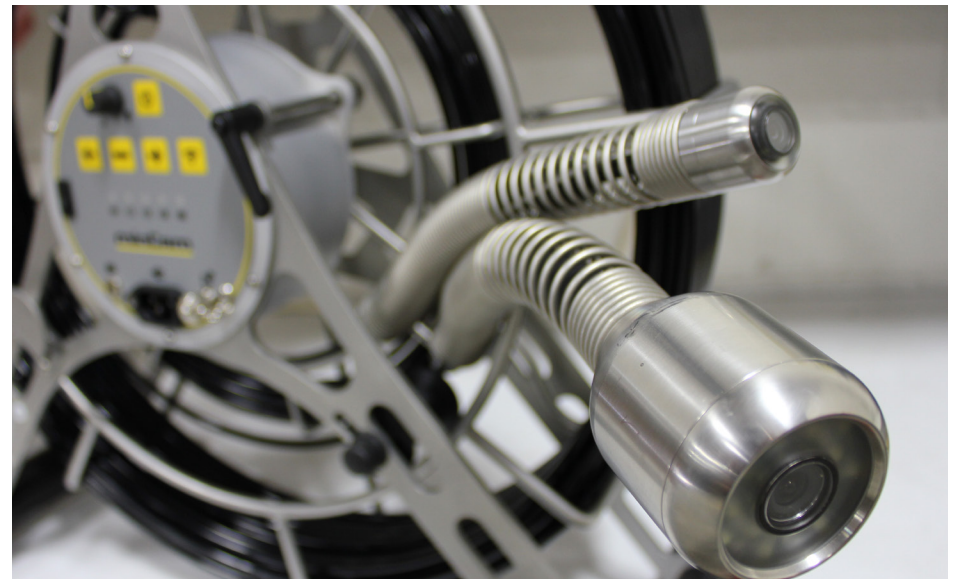


Monitor & Recording

- 8.4" TFT LCD sunlight readable, records video, voice and photo
- Pelican® Storm Case heavy-duty housing
- Ergonomically attached to reel
- SD card reader, max 32 GB for approx. 20 hours of video
- MPEG-4 Video (.avi, 800x600); Pictures (.bmp 640x480)
- Integrated Qwerty keyboard available (special order)

Cameras

	KK55SL	KK29SL
Range	3" - 16" (70-400mm)	2" - 8" (50-200mm)
Video Quality	High-resolution 480 TVL	High-resolution 480 TVL
Lighting	16 pcs LEDs	10 pcs LEDs
Lens	4mm sapphire glass	3mm sapphire glass
Water Tight	Up to 145 psi	Up to 145 psi
Outer diameter	2.17" (55mm)	1.14" (29mm)
Cylindrical length	1.42" (36mm)	0.63" (16mm)



minCam360 Pan & Tilt Push System

The minCam360 push system is equipped with an innovative pan & tilt push camera. The extremely small and short 360° pan & tilt camera head allows the viewer to see in all directions in pipes 3" up to 16".

System Specifications

- 200 ft. (60m) of 9.2mm fiberglass push cable (up to 300 ft.)
- Integrated dual-band 512Hz/33kHz sonde
- Electronic on-screen distance counter
- 2 removable Lithium Ion batteries for 4+ hours operation
- Power Supply: 100 - 240V AC; 12V DC Car adapter
- Lightweight stainless steel and carbon reel cage
- Mechanical reel brake
- Control unit: On/off switch, light regulation, sonde frequency control, preset camera macros, BNC video out
- Wireless remote control with joystick for pan & tilt, 4X zoom control, light regulation, preset camera macros
- Weight: 49 lbs.; Dimensions: 23" x 26" x 12" (L x H x W)



Monitor & Recording

- 8.4" TFT LCD sunlight readable, records video, voice and photo
- Pelican® Storm Case heavy-duty housing
- SD card reader, max 32 GB for approx. 20 hours of video
- MPEG-4 Video (.avi, 800x600); Pictures (.bmp 640x480)
- Integrated Qwerty keyboard text generator

SK50 Pan & Tilt Camera

Range	3" - 16" (70-400mm)
Pan & Tilt	Infinite 360° pan / tilt range - 150° viewing angle
Zoom / Focus	4-step digital zoom / automatic mechanical focus
Video Quality	High-resolution 520 TVL
Lighting	10 self-adjusting "smart" LEDs
Lens	3.5mm sapphire glass
Water Tight	Up to 85 psi
Outer diameter	1.96" (50mm)
Cylindrical length	1.25" (32mm) / Full length: 3.2" (80mm)





KTS100 Well Camera system

The rugged well camera systems with high tensile strength cables feature interchangeable cameras - any system can include the KK55 camera water tight up to 580 psi.

TFTP8 Control Unit & Monitor

- 8.4" TFT LCD sunlight readable monitor, 800 x 600 pixels Resolution in 4:3 format; Contrast: 600:1
- Built-in keyboard for 10 page text overlay
- SD card reader, max 32 GB for approx. 20 hours of video
- MPEG-4 Video (.avi, 800x600); Pictures (.bmp 640x480); voice recording
- On/off switch; continuous light regulation; BNC video out
- Internal power supply 100 - 240V; 12V car adapter
- Integrated high efficiency battery
- Additional lighting module accessory available (pictured top right)

KTS100 Cable Drum Specifications

- Steel drum reel with 300 ft. of cable (100 m)
- 6.7mm flexible cable with tensile strength 2000N
- Slip ring and mechanical holding brake
- 10 foot cable connector to control unit
- 12" x 9 1/2" x 14 1/4" (l x w x h); Weight: 17.6 lbs.

KK55 Well Camera

Range	Up to 16" diameter wells
Video Quality	High-resolution 480 TVL
Lighting	16 pcs LEDs
Lens	4mm sapphire glass
Water Tight	Std up to 145 psi / (Special order up to 580 psi)
Outer diameter	2.17"
Cylindrical length	1.42"

KK29 1.1" camera (up to 580 psi) & KK18 0.7" camera (up to 435 psi) available on special order as replacement or separate upgrade



Our Mission: To provide advanced and innovative products for pipe inspection and point repair that match the ever-changing and evolving demands of success-oriented customers.

Where reliable fast service and repair are guaranteed.

Your authorized Rausch dealer:

Rausch and minCam products are distributed through authorized regional dealers or sold direct.

Rausch Electronics USA, LLC

1686 Opportunity Ave.
Chambersburg, PA 17201

Email:	reusa@rauschusa.com
Office:	(717) 709-1005
Fax:	(717) 709-1009
Service:	(717) 263-8093

The logo for minCam, featuring the word "minCam" in a bold, sans-serif font. The "min" is in a lighter weight and the "Cam" is in a bolder weight. A thick yellow horizontal bar is positioned below the text.

© 2018 Rausch Electronics USA, LLC
All rights reserved. All provided information
and specifications are subject to change without
notice.
Edition: 01/2018

www.rauschusa.com/minCam