

[www.InfraSolutionsGroup.com](http://www.InfraSolutionsGroup.com)



**Quote To:**

NCSA

Mooreville, NC 28115

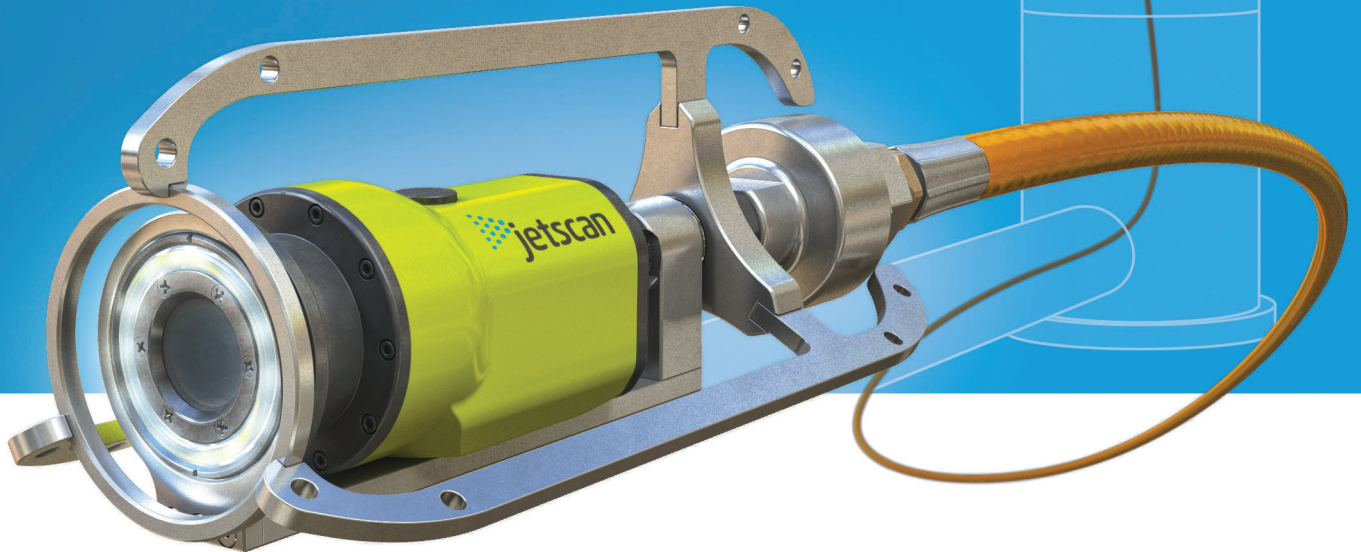
**Atten:**

Product ID	Description	Quantity	Unit Price
E-JS-SYS-COMBO-21	8/6 Inch Combo Jetscan 2.0 System		\$12,856.00
E-JS-SYS-8-21	8 Inch Self Leveling JetScan 2.0 System		\$9,924.00
E-JS-SYS-6-21	6 Inch Self Leveling JetScan 2.0 System		\$9,924.00



HD

WiFi



your **jetter truck**  
is now a **camera truck**

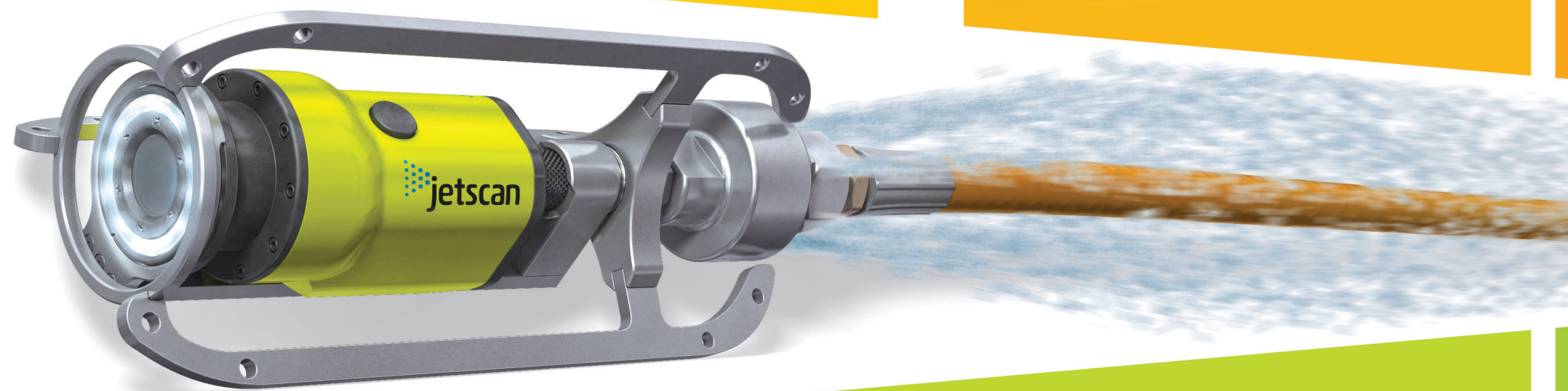
**Envirosight**



# jetscan

never jet blind

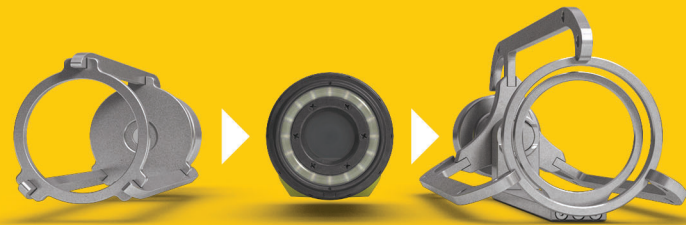
Jetscan is the quick, easy way to see what you're jetting. This wireless HD video nozzle is affordable enough to put on every cleaning truck, yet quickly captures valuable footage of pipe condition for review moments later on a tablet.



## quick-change sleds



Tool-free camera removal means you can swap skirts in seconds to handle different needs.



## wireless charging



No plugs or removable batteries—just slide Jetscan's charger pad into position overnight for a full day's charge.



## multi-diameter



Jetscan travels through pipes smaller than 6" diameter to capture high-definition video footage.

From under

6"

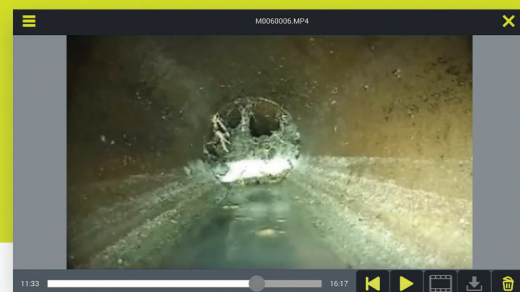
up to 24" dia.



## streaming video



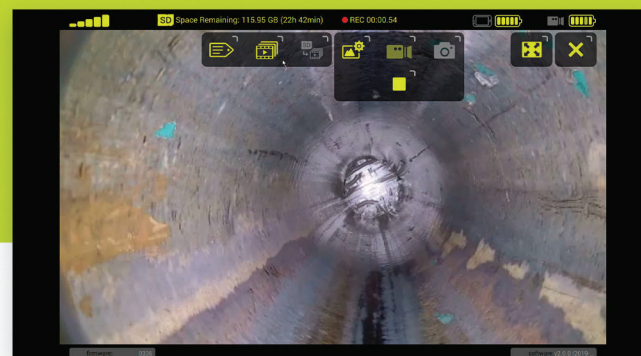
Stream video wirelessly to any tablet as soon as you retrieve the Jetscan from a manhole.



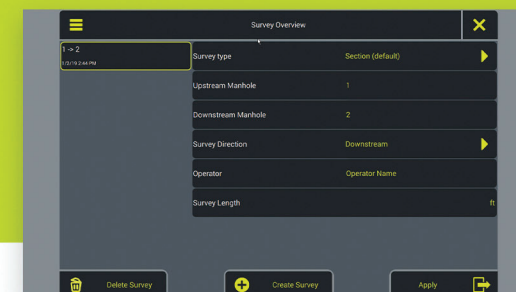
## tablet interface



Easily import high-resolution video footage from the Jetscan wirelessly or via USB connection.



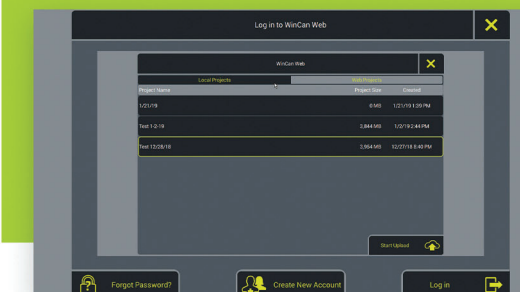
Annotate footage with details like manhole numbers, survey direction, distance and operator. Combine data, video and still images into complete surveys.



## cloud-enabled



Upload video to WinCan Web for secure, effortless sharing and storage.



### confirm cleaning

See if cleaning was successful using before/after footage.



### assess condition

Locate offsets, collapses, infiltration and more—without a crawler.



### avoid hazards

Find collapses, protruding taps, root balls and anything else that could trap a nozzle.



### choose wisely

Pick your nozzle based on presence of gravel, grease, mud, roots or sludge.



### save money

View pipe instantly and independently without diverting an inspection crew.



### stay safe

Confirm absence of gas, electric and water cross-bores before root cutting.



# specifications

## camera

imager type . . . CMOS (w/ image stabilization, low-light capability)  
 field of view . . . . . 124 deg (diagonal)  
 resolution . . . . . 1080p and 1400p (switchable)  
 video format . . . . . MP4  
 connections . . . . . Wi-Fi, USB tether  
 wireless compliance . . . . . FA-RL 2014/53/EU  
 illumination . . . . . 12 LEDs, ~1000 lumens cumulative  
 construction . . . . . stainless, aluminum, polypropylene  
 weight . . . . . 2.5 lb (1.13 kg)  
 dimensions (dia. × length) . . . . . 3" × 7.3" (76 × 186 mm)  
 environmental / submersion ratings . . . . . IP67 / 20' (6.1 m)  
 battery type / life / charge time . . . . . lithium ion / ~8 hr / ~8 hr

## sled

small large self-leveling

pipe dia. range . . . <6"-8" (<150-200 mm) . . 8-24" (200-600 mm)<sup>†</sup>  
 dimensions (dia. × length) 4.5" dia. × 12.3" . . . . 5.9" dia. × 12.6"  
 (115 mm dia. × 313 mm) (150 mm dia. × 320 mm)  
 sled construction . . . . . stainless . . . . . stainless  
 weight . . . . . 1.5 lb (0.7 kg) . . . . . 2.6 lb (1.8 kg)  
 hose connection . . . . . 1" NPTF . . . . . 1" NPTF  
 thrust/flow . . . . . see chart below . . . . . see chart below

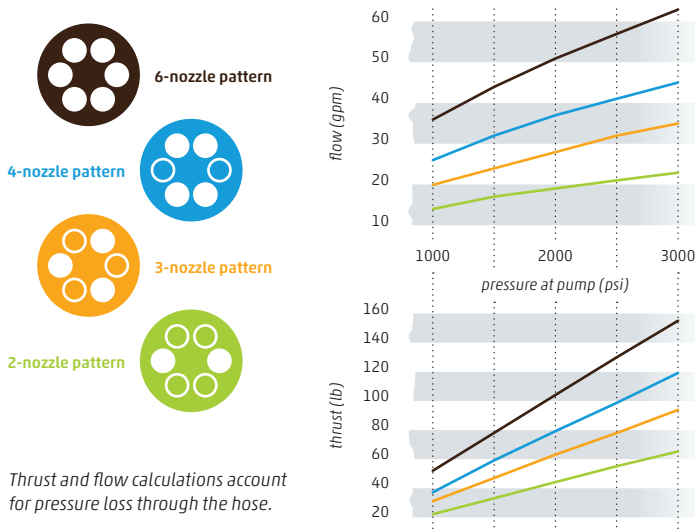
## app

compatibility . . . . . iOS, Android, Windows

## kit contents<sup>‡</sup>

Jetscan camera • self-leveling skid for 8" pipe  
 wireless charger • swivel connector with nozzles

<sup>†</sup> diameters larger than 12" (300 mm) require wheel attachments. <sup>‡</sup> tablet not included



©2019 Envirosight. All rights reserved. Specifications subject to change without notice. Jetscan and Envirosight are trademarks of Envirosight.

Patents pending.

**Envirosight**

(866) 936-8476 • [www.envirosight.com](http://www.envirosight.com)