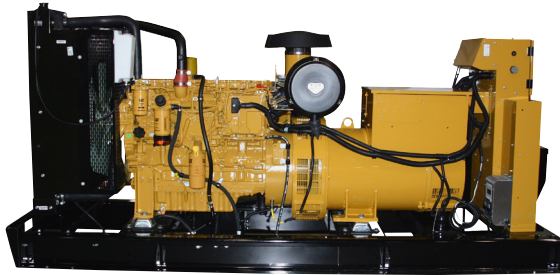


FSA20-EQU18.0, ITEM# 109
GENERATOR: 125kW Generator Package
Caterpillar D125-8

Feature	Qty	Description
CERTESE_I	1	EPA STATIONARY EMERGENCY
VOP601_I	1	60HZ 3PH 480/277V VOP601
STANDBY_I	1	STANDBY POWER
KW00125_I	1	60 Hz, 125 kW
NAC160P_I	1	D125-8 60Hz 480V
LANENGCI_I	1	ENGLISH PANEL LANGUAGE
ULLIST_I	1	UL 2200 LISTED PACKAGE GEN SET
NONCSA_I	1	NO CSA CERTIFICATION
NONIBC_I	1	NO SEISMIC CERTIFICATION
LANENGO_I	1	ENGLISH INSTRUCTION LANGUAGE
ESCNONE_I	1	STANDARD WARRANTY
MSEPGGN_I	1	GENERAL EPG
MSCEC77_I	1	PUBLIC OR CIVIL SERVICES
MWCODEF_I	1	STANDBY POWER
AH1H_I	1	SPACE HEATER 1H
OGNSEAD_I	1	LC3114G 60Hz SE ALT AD
PMEXCI3_I	1	PERMANENT MAGNET EXCITATION
GENT130_I	1	130C TEMP RISE OVER 40C AMB
FSBT_I	1	SKID WITH FUEL TANK
FSBTI24_I	1	SUB BASE TANK 408 GAL
DT24HRB_I	1	OVERFILL PREV & DROP TUBE 24HR
NOTRQD_I	1	NO TANKS RISER
FSTDVP_I	1	VENT PIPE-STD
FFULEV4_I	1	EMERGENCY VENT UL-4"
FSS_I	1	Fuel Level Alarms / SD
SATFBC_I	1	L2 SOUND ATTENUATED ENC (c)
CATREN_I	1	CAT White
PVW2_I	1	PANEL DOOR W/ VIEWING WINDOW
EMCP42B_I	1	EMCP4.2B CONTROL PANEL
NFPA_I	1	NFPA BUNDLE
B1W_I	1	WET BATTERY (B1W)
PBC10NU_I	1	NFPA BATT CHARGER UL10A 120VAC
CSB2_I	1	EXTERNAL EMERGENCY STOP
WSS1_I	1	LOW COOLANT LEVEL SHUTDOWN 1
STDVIB_I	1	VIBRATION ISOLATORS.
PAA1_I	1	PANEL MOUNTED AUDIBLE ALARM
CPOB_I	1	CONTROL PANEL OPTIONS BOX
ENGOPT_I	1	ENGINE OPTION HARNESS
NOTRQD_I	1	NO POWER TERMINAL STRIP
SINGLE_I	1	SINGLE CIRCUIT BREAKER
CB0252A_I	1	250A 100% RATED BREAKER
NO2NDCB_I	1	NO 2ND CIRCUIT BREAKER
SUSE_I	1	SUSE DECALS AND FILMS
SHTAUX1_I	1	AUXILIARY CONTACTS
SUSE1B_I	1	SUSE FOR 1ST CB 125A TO 400A
NOTRQD_I	1	NOT REQUIRED.
STDAIR_I	1	STD AIR CLEANER - LIGHT DUTY
STD RAD_I	1	STANDARD RADIATOR
CAN_I	1	ENCLOSURE SILENCER
STDTEST_I	1	STD TEST - PKG GEN SET 0.8 PF



Caterpillar is leading the power generation marketplace with Power Solutions engineered to deliver unmatched flexibility, expandability, reliability, and cost-effectiveness.

Image shown may not reflect actual configuration

Specifications

Generator Set Specifications	
Rating	125 ekW (156.3 kVA)
Voltage	480 Volts
Frequency	60 Hz
Speed	1800 rpm

Generator Set Configurations	
Emissions/Fuel Strategy	U.S. EPA Certified for Stationary Emergency Use Only (Tier 3 Nonroad Equivalent Emission Standards)

Engine Specifications		
Engine Model	C7.1 In-line 6, 4-cycle diesel	
Bore	105 mm	4.13 in
Displacement	7.01 L	427.8 in³
Stroke	135 mm	5.31 in
Compression Ratio	16.7:1	
Aspiration	Turbocharged Air-to-Air-Aftercooled	
Governor Type	Electronic	
Fuel System	Common Rail	

Package Dimensions*		
Length	3039 mm	119.7 in
Width	1110 mm	43.7 in
Height	1476 mm	58.1 in
Weight†	1500 kg	3307 lb

*Note: For reference only – do not use for installation design. Please contact your local dealer for exact weight and dimensions.

†Weight includes: Oversize generator, skid base, circuit breaker, oil, and coolant.

Benefits & Features

Cat® Diesel Engine

- Reliable, rugged, durable design
- Four-stroke cycle diesel engine combines consistent performance and excellent fuel economy with minimum weight
- Electronic engine control

Generator

- Matched to the performance and output characteristics of Cat engines
- Industry-leading mechanical and electrical design
- Industry-leading motor starting capabilities
- High efficiency

Cat EMCP Control Panel

The EMCP controller features the reliability and durability you have come to expect from your Cat equipment. EMCP 4 is a scalable control platform designed to ensure reliable generator set operation, providing extensive information about power output and engine operation. EMCP 4 systems can be further customized to meet your needs through programming and expansion modules.

Seismic Certification

- Seismic certification available
- Anchoring details are site specific, and are dependent on many factors such as generator set size, weight, and concrete strength
- IBC certification requires that the anchoring system used is reviewed and approved by a Professional Engineer
- Seismic certification per applicable building codes: IBC 2000, IBC 2003, IBC 2006, IBC 2009, IBC 2012, CBC 2007, CBC 2010

Design Criteria

- The generator set accepts 100% rated load in one step per NFPA 110 and meets ISO 8528-5 transient response
- Cooling system designed to operate in 50°C/122°F ambient temperatures with an air flow restriction of 0.5 in. water

UL 2200/CSA – Optional

- UL 2200 Listed
 - CSA Certified
- Certain restrictions may apply. Consult with your Cat Dealer.

Single-Source Supplier

Fully prototype tested with certified torsional vibration analysis.

Worldwide Product Support

Cat dealers provide extensive post-sale support including maintenance and repair agreements. Cat dealers have over 1,800 dealer branch stores operating in 200 countries. The Caterpillar S•O•SSM program cost effectively detects internal engine component condition, even the presence of unwanted fluids and combustion by-products.

Standard Equipment

Air Inlet

- Dry replaceable paper element type with restriction indicator

Cooling

- Radiator and cooling fan complete with protective guards
- Standard ambient temperatures up to 50°C (122°F)

Exhaust

- Exhaust flange outlet

Fuel

- Primary and secondary fuel filters
- Fuel priming pump
- Flexible fuel lines

Generator

- Matched to the performance and output characteristics of Cat engines
- Load adjustment module provides engine relief upon load impact and improves load acceptance and recovery time
- IP23 protection
- Integrated Voltage Regulation

Governor

- Electronic governor – ADEM™ A4

Control Panels

- EMCP 4.2 Series generator set controller

Mounting

- Rubber vibration isolators

Starting/Charging

- 12 volt starting motor
- Batteries with rack and cables

General

- Paint – Caterpillar Yellow except rails and radiators gloss black

Optional Equipment

Exhaust

- Industrial, residential, critical mufflers

Generator

- Excitation: [] Permanent Magnet Excited (PM) [] Internally Excited (IE)
- Anti-condensation heater
- Oversize and premium generators

Starting/Charging

- Battery charger – UL 10 amp
- Battery disconnect switch
- Jacket water heater

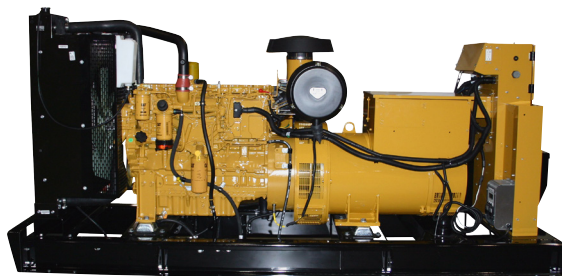
General

- UL 2200
- CSA Certification
- Enclosures: sound attenuated, weather protective
- Sub-base dual wall UL Listed fuel tanks
- Automatic transfer switches (ATS)

C7.1

125 ekW/ 156.3 kVA/ 60 Hz/ 1800 rpm/ 480V/ 0.8 Power Factor

Rating Type: STANDBY

Emissions: U.S. EPA Certified for Stationary Emergency Use Only
(Tier 3 Nonroad Equivalent Emission Standards)

D125-8

125 ekW/ 156.3 kVA
60 Hz / 1800 rpm/ 480V

Image shown may not reflect actual configuration

Package Performance

Generator Set Power Rating with Fan @ 0.8 Power Factor	125 ekW
Generator Set Power Rating	156.3 kVA

Fuel Consumption

100% Load With Fan	37.8 L/hr	10.0 g/hr
75% Load With Fan	30.3 L/hr	8.0 g/hr
50% Load With Fan	21.9 L/hr	5.8 g/hr

Cooling System¹

Engine Coolant Capacity	9.5 L	2.5 gal
Radiator Coolant Capacity	11.5 L	3.0 gal
Engine Coolant Capacity with Radiator/Exp Tank	21.0 L	5.5 gal
Air Flow Restriction (System)	0.12 kPa	0.48 in Water

Inlet Air

Combustion Air Inlet Flow Rate	14.4 m ³ /min	508.5 cfm
--------------------------------	--------------------------	-----------

Exhaust System

Exhaust Stack Gas Temperature	450°C	843°F
Exhaust Gas Flow Rate	29.9 m ³ /min	1056 cfm
Exhaust System Backpressure (maximum allowable)	15.0 kPa	60.2 in water
Exhaust Flange Size (internal diameter)	89.0 mm	3.5 in

C7.1

125 ekW/ 156.3 kVA/ 60 Hz/ 1800 rpm/ 480V/ 0.8 Power Factor

Rating Type: STANDBY

**Emissions: U.S. EPA Certified for Stationary Emergency Use Only
(Tier 3 Nonroad Equivalent Emission Standards)**

Heat Rejection		
Heat Rejection to Coolant (total)	75.0 kW	4368 Btu/min
Heat Rejection to Exhaust (total)	128.0 kW	7496 Btu/min
Heat Rejection to Aftercooler	32.0 kW	2138 Btu/min
Heat Rejection to Atmosphere from Engine	28.0 kW	1649 Btu/min
Heat Rejection to Atmosphere from Generator	9.8 kW	557.3 Btu/min

Alternator²		
Motor Starting Capability @ 30% Voltage Dip	363 skVA	
Frame	LC3114G	
Temperature Rise	130°C	234°F
Excitation	Self Excited	

Lube System		
Sump Refill with Filter	17.5 L	4.6 gal

Emissions (Nominal)³		
NOx + HC	4.0 g/kW-hr	
CO	1.0 g/kW-hr	
PM	0.2 g/kW-hr	

¹ For ambient and altitude capabilities consult your Cat dealer. Air flow restriction (system) is added to the existing restriction from the factory.

² Generator temperature rise is based on a 40°C (104°F) ambient per NEMA MG1-32.

³ The nominal emissions data shown is subject to instrumentation, measurement, facility and engine to engine variations. Emissions data is based on 100% Prime load. This information should not be used for permitting purposes and is subject to change without notice. Contact your Cat dealer for further details.

C7.1

125 ekW/ 156.3 kVA/ 60 Hz/ 1800 rpm/ 480V/ 0.8 Power Factor

Rating Type: STANDBY

**Emissions: U.S. EPA Certified for Stationary Emergency Use Only
(Tier 3 Nonroad Equivalent Emission Standards)**

DEFINITIONS AND CONDITIONS

Applicable Codes and Standards:

AS1359, CSA C22.2 No 100-04, UL142, UL489, UL601, UL869, UL2200, NFPA 37, NFPA 70, NFPA 99, NFPA 110, IBC, IEC60034-1, ISO3046, ISO8528, NEMA MG 1-22, NEMA MG 1-33, 72/23/EEC, 98/37/EC, 2004/108/EC.

STANDBY: Output available with varying load for the duration of the interruption of the normal source power. Average power output is 70% of the standby power rating. Typical operation is 200 hours per year, with maximum expected usage of 500 hours per year.

Ratings are based on SAE J1349 standard conditions. These ratings also apply at ISO3046 standard conditions.

Fuel Rates are based on fuel oil to specification EPA 2D 89.330-96 with a density of 0.845 – 0.850 kg/L (7.052 – 7.094 lbs/U.S. gal.) @ 15°C (59°F) and fuel inlet temperature 40°C (104°F).

Additional ratings may be available for specific customer requirements, contact your Cat representative for details.

Performance No.: P4392A-00

Feature Code: NAC160P

Generator Arrangement: 4545273

Date: 06/28/2016

Source Country: U.S.

LEHE0888-01

www.Cat-ElectricPower.com

©2016 Caterpillar

All rights reserved.

Materials and specifications are subject to change without notice.
The International System of Units (SI) is used in this publication.

CAT, CATERPILLAR, their respective logos, ADEM, S•O•S, "Caterpillar Yellow", the "Power Edge" trade dress as well as corporate and product identity used herein, are trademarks of Caterpillar and may not be used without permission.