

Item # 38

Volvo A25G Articulated Dump Truck

Vendor Contact Information:

Kevin Gray
Governmental Sales Manager
Alta Construction Equipment
Florida
8418 Palm River Road
Tampa, FL 33619
Office: 813-630-0077
Cell: 813-391-8159
Email: kgray@altaequipfl.com

Model: Volvo A25G Articulated Off Road Dump Truck

Description	Article
Volvo A25G Articulated Hauler	A25G
Standard body	AH82001
23.5R25 XADN Michelin 185B E3 (6)	AH20037
6 - Rims (5pc) for 23.5-25 tires	AH21010
Front fender widener for 80 series tires	AH22002
Rear mudflaps, front of bogie, 80 series tire	AH23003
Engine D11H-A (Tier 4F)	AH30013
Air Filter, Heavy Duty EON	AH31005
Delayed engine stop	AH31006
Engine Idle shutdown	AH31012
Anchorage manual	AH41007
Air conditioning	AH41008
Universal key	AH41011
Armrest	AH41018
ACC control panel, Fo-scale	AH41023
Radio Installation kit	AH41025
Retarder Pedal	AH41031
Radio CD Player/Bluetooth	AH41032
Seat, air suspension, KAB	AH42003
Back up alarm	AH50002
Rear view camera, color	AH50003
Rotating Beacon, LED	AH51012
Work Lights	AH51014
Lifetime Frame	AH70009
Parameter settings USA	AH71001
Electrical hood opening	AH71002
Decal set USA	AH81001
CareTrack, GSM/satellite	AH81039
CareTrack 3 yr subscription	AH81026
Accumulator cold climate	AH81027
Transport rust protection R2	AH80002
Overhung Tailgate	AH83004

Volvo Construction Equipment
Building Tomorrow



A25G, A30G

Volvo Articulated Haulers • 27.5 - 32.0 ton capacity • 315 - 355 hp





1966: DR 631 GRAVEL CHARLIE

WORLD'S FIRST SERIES-MANUFACTURED ARTICULATED HAULER

By today's standards Gravel Charlie was not a big machine – but its impact on transport operations in the construction sector was massive.

- The world's first series manufactured articulated hauler
- Pioneering solutions including articulated steering, all-wheel drive and differential locks
- Unrivalled manoeuvrability in off-road conditions

GRAVEL CHARLIE MARKED THE BEGINNING OF SOMETHING NEW
AND SOMETHING WHICH WOULD CHANGE THE CONSTRUCTION SECTOR FOREVER.

10 000
ARTICULATED
HAULERS
PRODUCED
BY VOLVO
1981

25 000
ARTICULATED
HAULERS PRODUCED
BY VOLVO
1996



**DR 631
GRAVEL CHARLIE**

1966

World's first series-manufactured articulated hauler

**10 t
25 km/h**



DR 860

1967

Master of rough terrain:
3-axle machine with unique bogie concept, still going strong

**15 t
30 km/h**



5350

1979

"Terrain Express" expanded Volvo articulated hauler's global success

**20 t
50 km/h**

- Constant 4-wheel drive
- Higher average speed in combination with higher load capacity = **improved profitability**
- Fully automatic transmission
- Unique suspension system allows high average speed
- Top class, roomy cab with low noise level



A25C

1993

First articulated hauler with low emission engine as standard



A40

1995

A class bigger

36 t

A complete product range
20 - 40 ton class

50 000

ARTICULATED
HAULERS
PRODUCED
BY VOLVO

2006



D-SERIES

2000

Built
with the operator
in focus

37 t

- Increased productivity
- Improved operator comfort
- Improved serviceability



E-SERIES A40E FS

2007

World's first
full suspension
articulated hauler,
boosting
operator comfort
and productivity

39 t



F-SERIES

2011

Further
improving ease
of operation
and environmental
care

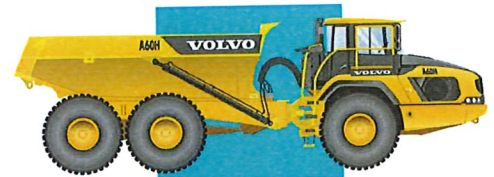


G-SERIES

2014

Wet,
cooled brakes
on all models

- Uptime
- Fuel efficiency
- Operator's choice



A60H

2016

Launching the
world's largest arti-
culated hauler.

55 t

2017

75 000
ARTICULATED
HAULERS
PRODUCED
BY VOLVO

2012

BEST INDUSTRIAL
DESIGN AWARD
FOR THE A40F
DESIGN



2001

BEST INDUSTRIAL
DESIGN AWARD
FOR D-SERIES
DESIGN



2016: VOLVO A60H THE BEST JUST GOT BIGGER



Built on the proven Volvo technology of articulated steering, all-wheel drive and differential locks, the Volvo A60H has evolved to be bigger and bolder!

- The largest true articulated hauler on the market
 - 55 t payload capacity
- Meeting a growing demand for larger, higher payload haulers

BY EVOLVING OUR PRODUCT LINE-UP TO RESPOND TO CUSTOMER DEMANDS,
THE VOLVO A60H CONTINUES OUR PROUD HERITAGE OF INNOVATION AND MARKET LEADERSHIP IN HAULER SOLUTIONS.

Pure uptime

Get continuous production with this bigger, durable and superior machine – always available and ready to work. Count on superb reliability thanks to the machine's robust design, easy service access and outstanding Volvo dealer network. Guarantee pure uptime.

Guaranteed durability

Increase your uptime using heavy-duty front and rear frames, hitch and wet disk brakes. Volvo proven durability and the support of extensive warranty options means you never need to worry about getting the job done. Strength and durability are hallmarks of the Volvo articulated hauler.



Over fifty years strong

Fifty years and fifty tonnes later, Volvo is the world's leading manufacturer of articulated haulers. We invented the concept and have been developing and building these machines for over 50 years – it has come a long way from its original 10 tonne articulated hauler. With proven success over the years, the machines include innovative technology and the renowned Volvo engine.



Service access

With industry-leading access, servicing your machine is quick and easy. The front grill swings down, opening a service platform with anti-slip steps. The electric hood opens to 90 degrees, allowing full and safe access to the engine compartment.



Volvo dealer network

The exclusive Volvo dealer network is there to support you whenever you need it. Volvo offers a number of services, local knowledge and global experience, including telematics machine monitoring – CareTrack™ and MATRIS™ – as well as superb parts availability.





UPTIME

Get ready to work with the all new A25G/A30G. Designed for heavy hauling in severe off-road operation, the machine's long service life, quality, reliability and durability is everything you expect from a Volvo. Hauling is easier and more efficient.



FUEL EFFICIENCY GUARANTEED

The A25G/A30G, powered by the world-renowned Volvo engine delivers excellent fuel efficiency without compromising on power or performance. With guaranteed fuel efficiency, this machine will increase your profitability and improve your return on investment.

Incredible efficiency

Improve your efficiency and move more for less. Excellent fuel efficiency, innovative technology and useful operational data tools help to control your maintenance costs and maximize your investment.

Move more for less

The machine is optimized for efficiency featuring higher payload capabilities. Its smart design allows for more capacity while reducing fuel consumption so you can move more for less.



Operational data

Receive valuable data to improve onsite efficiency and save costs. With intelligent systems from Volvo such as MATRIS™, CareTrack™ and the On Board Weighing system, you will optimize your production and minimise your operational costs.



Control your maintenance costs

The range of Customer Support Agreements offer preventive maintenance, total repairs and a number of uptime services. Volvo uses the latest technology to monitor machine operation and status, giving you advice to increase your profitability. By having a Customer Support Agreement you are in control of your service costs.



Volvo dynamic drive

Dynamic and predictive gear selection adapts to operating conditions, for improved comfort and fuel efficiency.



Hit the targets

Hit your targets with the A25G, A30G. This machine features 100% off-road performance, proven Volvo technology and increased payload – contributing to sustainable operations, year after year.

Simply the best

The A25G/A30G machine delivers unbeatable off-road performance in its class with features including matched Volvo drivetrain, Automatic Traction Control including 100% differential locks, all-terrain bogie, hydro-mechanical steering.



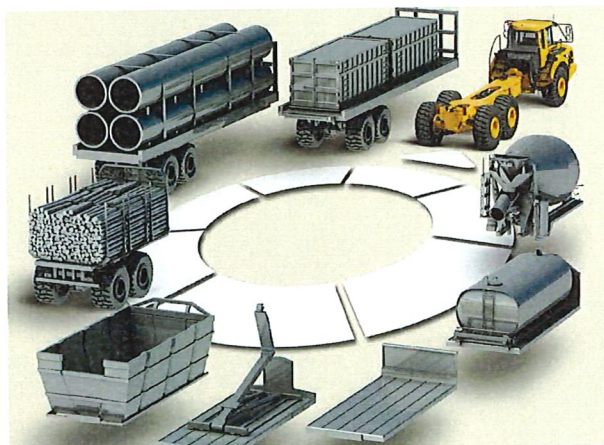
The right speed for the job

Ensure the right speed for your job using the retarders, Volvo Engine Brake and new Downhill Cruise Control to adapt your speed for maximum productivity and safety.



Versatility

The A25G/A30G articulated hauler provides outstanding versatility so you can work in all seasons, terrains and applications for maximum utilization. With body building solutions and different chassis options you can tailor the machine to your jobsite.



Load optimization

The optional On Board Weighing System guarantees the optimal load every cycle. This maximizes production, boosts fuel efficiency and reduces machine wear in all site conditions and operations.





PRODUCTIVITY

Improve productivity and carry more in one go with increased payload.

Get ready for heavy hauling

Guaranteed durability

Volvo proven durability and support mean you never need to worry about getting the job done.

Over fifty years strong

Over fifty years later, Volvo is still the world's leading manufacturer of articulated haulers.

Dump support system

The new dump support system increases stability and control in tough environments.

Cruise Control

Set and adjust the cruise control to maintain a constant travel speed for smoother and more efficient hauling.

OptiShift

Directional changes are made smoother, easier and faster.

OPERATOR'S CHOICE

Its comfortable cab and ease of operation, even in adverse conditions, makes operators choose this machine.



UPTIME

Designed for heavy hauling in severe off-road operation, its long service life, quality, reliability and durability is everything you expect from a Volvo.



FUEL EFFICIENCY GUARANTEED

Powered by the world-renowned Volvo engine delivers excellent fuel efficiency without compromising on power or performance.

Service access

With industry-leading access, servicing your machine is quick and easy.

Volvo dynamic drive

Gear shifting adapts dynamically to operating conditions, for improved comfort and fuel efficiency.

PRODUCTIVITY

Move more tonnes per hour and give a 100% in all conditions.

Brake test

Schedule and perform a safe and easy stationary test of the parking brake and load and dump brake, guided by the operator's display.

Downhill Speed Control

Easily maintain control and speed when operating downhill, for safer and more comfortable operation.



OPERATOR'S CHOICE

A happy operator is a more productive operator and when many other machines are onsite, most operators prefer the Volvo. Even in the most adverse conditions, its comfortable cab and ease of operation keep operators alert and performing their best.

Control in comfort

The industry-leading spacious cab and comfortable work environment make the A25G/A30G the number one choice for operators. Its superior comfort, control, ease of operation and safety appeals to operators, helping to maintain outstanding productivity all day, every day.

Total operator control

The A25G/A30G is packed with features to help operators get the most from the machine. Intelligent functions such as cruise control, downhill speed control and hill assist help the operator control the machine with ease and efficiency, for enhanced safety and productivity in all conditions.



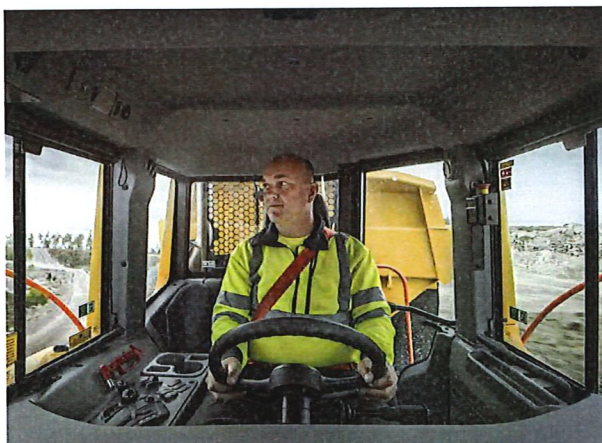
Ease of operation

The ergonomic and comfortable controls make Volvo articulated haulers easy to understand and suit all operators. Automatic functions such as OptiShift – which enables fast and smooth directional changes – offer even greater ease of operation for an unrivalled operator experience.



Operator comfort

Feel comfortable and spend more time in the A25G/A30G. The centrally positioned operator, superior steering, excellent suspension, low noise levels, climate control, space and visibility, reduce operator fatigue for more effective operations.



Safety

Whether its operators, trainers, technicians or site workers – safety on site is of fundamental importance. In the A25G/A30G superior visibility and efficient lighting combine with a number of safety features, such as the brake test and dump support, helping to keep the operator and people working around the machine safe, even in the most demanding working environments.



Volvo A25G, A30G in detail

Engine

V-ACT, 11 liter, 6-cylinder in line turbocharged diesel engine with 4 valves per cylinder, overhead camshaft and electronically controlled unit injectors. It has wet replaceable cylinder liners and replaceable valve guides and valve seats. The engine has light EGR (Exhaust Gas Recirculation) and exhaust after treatment with EAT-Muffler (Exhaust After treatment) including SCR (Selective Catalytic Reduction) with an electronically controlled UDS (Urea Dosing System).

		A25G	A30G
Engine model	Volvo	D11L	D11L
Max power - SAE J1995 Gross	kW (hp)	235 (315)	265 (355)
at engine speed	r/min (r/s)	2,100 (35)	2,000 (33.3)
* Flywheel power - ISO 9249, SAE J1349 Net	kW (hp)	234 (314)	264 (354)
at engine speed	r/min (r/s)	2,100 (35)	2,000 (33.30)
Max torque - SAE J1995 Gross	Nm (ft lbf)	1,950(1,432)	1,950(1,432)
Max torque - ISO 9249, SAE J1349 Net	Nm (ft lbf)	1,942 (1,432)	1,942 (1,432)
at engine speed	r/min (r/s)	1,100 (18.3)	1,200 (20)
* Displacement	l (in ³)	10.8 (659)	10.8 (659)

Electrical system

All cables, sockets and pins are identified. Cables are enclosed in plastic conduits and secured to main frame. Halogen lights. Prewired for options. Connectors meet IP67 standard for water-proofing as necessary.

		A25G	A30G
Voltage	V	24	24
Battery	V	2x12	2x12
Battery capacity	Ah	2x170	2x170
Alternator	kW/A	3,396/120	3,396/120
Starter motor	kW	9	9

* Drivetrain

Torque converter with built-in lock-up function.
 Transmission: Fully automatic Volvo PowerTronic planetary transmission with six forward gears and two reverse gears. The transmission has the ability to skip gears for fast and accurate gear selection.
 Dropbox: Volvo-developed, in-line design with high ground clearance and 100% longitudinal "dog clutch" type differential lock.
 Axles: Heavy duty, purpose built Volvo design with fully floating axle shafts, planetary type hub reductions and 100% dog clutch type diff-lock.
 Automatic traction control system (ATC).

		A25G	A30G
Torque converter		2.37:1	2.37:1
Transmission	Volvo	PT 2116	PT 2116
Dropbox	Volvo	IL1 ATC	IL1 ATC
Axles	Volvo	AHW56	AHW64

Brake system

Fully hydraulic, wet multiple disc brakes with enclosed, forced oil-cooled multiple discs on all wheels. Two circuit brake system. Complies with ISO 3450 at total machine weight.
 Circuit division: One circuit for front axle and one for bogie axles.
Parking brake: Spring-applied disc brake acting on the trailer unit propeller shaft. When the parking brake is applied, the longitudinal differential locked.
 Retarder: Service brake retarder function and Volvo Engine Brake (VEB).

Steering System

Hydro-mechanical articulated steering, self compensating design.
Two double-acting steering cylinders.
 Steering angle: 3,4 steering wheel turns lock-to-lock, ±45°.
Steering system, including secondary steering fulfills ISO 5010.

Chassis

Frames: box type, heavy duty. High strength steel, robot welded.
 Rotating hitch: 100% maintenance free, fully sealed, with permanently greased tapered roller bearings.

Cab

Mounted on rubber pads. Ergonomically designed. Easy entry and exit. Wide angle forward view.
Operator centrally positioned above the front axle. Adjustable operators seat with retractable seat belt.
Tilt/telescopic steering wheel. Ergonomically positioned controls. Filtered air. Optional climate control system.
Operator communication system: Contronics.
Large color display, user-friendly and easy-to-understand information, all vital machine functions are constantly monitored.
Instructor seat with seat belt.
Safety: ROPS/FOPS standards approved according to ISO3471, SAE J1040 / ISO3449, SAE J231.

		A25G	A30G
Sound level in cab (ISO 6396) - LpA	dB(A)	72	72
External sound level (ISO 6395) - LwA	dB(A)	110	111
Internal sound level with sound kit: 70 dB(A)			
External sound level with sound kit: 108 dB(A)			

Suspension

Front suspension: Gas-hydraulic struts. Soft and progressive. Independent wheel movement via a 3-point mounting system.

Hydraulic system

Pumps: Four variable displacement piston pumps driven by the flywheel PTO.
Two load-sensing used for steering and tipping and two electrical controlled used for fan, brake cooling and brake power supply.
One ground-dependent piston pump for secondary steering mounted on the dropbox.
Two return oil filters with magnetic cores provide effective oil filtration.

		A25G	A30G
System max working pressure	MPa (psi)	25 (3,626)	25 (3,626)

Dumping System

Patented Load and Dump Brake.
Dumping Cylinders: two single stage double acting cylinders.

		A25G	A30G
Tipping angle	°	74	70
Tipping time with load	s	12	12
Lowering time	s	10	10

Body

		A25G	A30G
Plate thickness			
Front	mm (in)	6 (0.24)	6 (0.24)
Sides	mm (in)	10 (0.39)	10 (0.39)
Bottom	mm (in)	14 (0.55)	14 (0.55)
Chute	mm (in)	14 (0.55)	14 (0.55)
Material			
Yield strength	N/mm ² (psi)	1,150 (166,793)	1,150 (166,793)
Tensile strength	N/mm ² (psi)	1,350 (195,801)	1,350 (195,801)

Load Capacity

		A25G	A30G
Standard Body			
Load capacity	kg (sh tn)	25,000 (27.56)	29,000 (32)
Body, struck	m ³ (yd ³)	12.1 (15.8)	13.9 (18.2)
Body, heaped 2:1	m ³ (yd ³)	15.3 (20)	17.8 (23.3)
With overhung tailgate			
Body, struck	m ³ (yd ³)	12.4 (16.2)	14.2 (18.6)
Body, heaped 2:1	m ³ (yd ³)	15.9 (20.8)	18.4 (24.1)

Specifications

REFILL CAPACITIES

			A25G		A30G	
Crankcase	l	gal	35	9.2	35	9.2
Fuel tank	l	gal	380	100.4	380	100.4
Cooling system	l	gal	48	12.7	48	12.7
Brake cooling system	l	gal	35	9.2	35	9.2
Transmission	l	gal	41	10.8	41	10.8
Dropbox	l	gal	9	2.4	9	2.4
Axles, front/bogie	l	gal	30/61	7.9/16.1	31/63	8.2/16.6
Hydraulic tank	l	gal	137	36.2	137	36.2
DEF	l	gal	39	10.3	39	10.3

SPEED

			A25G		A30G	
Forward						
1	km/h	mph	8.3	5.2	8.3	5.2
2	km/h	mph	11.9	7.4	11.9	7.4
3	km/h	mph	21.1	13.1	21.1	13.1
4	km/h	mph	30.3	18.8	30.3	18.8
5	km/h	mph	38.4	23.9	38.4	23.9
6	km/h	mph	52.7	32.7	52.7	32.7
Reverse						
1	km/h	mph	7.7	4.8	7.7	4.8
2	km/h	mph	13.7	8.5	13.7	8.5

OPERATING WEIGHT UNLOADED

			A25G		A30G	
Tires			23.5R25*		750/65R25**	
Front	kg	lb	12,800	28,219	12,900	28,440
Rear	kg	lb	9,900	21,219	10,700	23,589
Total	kg	lb	22,700	50,045	23,600	52,029
Payload	kg	lb	25,000	55,116	29,000	63,934

Operating weight includes all fluids and operator

*) A25G with tires 750/65R25, add 200 kg (440 lb)/axle

**) A30G with tires 23,5R25, decrease 200 kg (440 lb)/axle

TOTAL WEIGHT

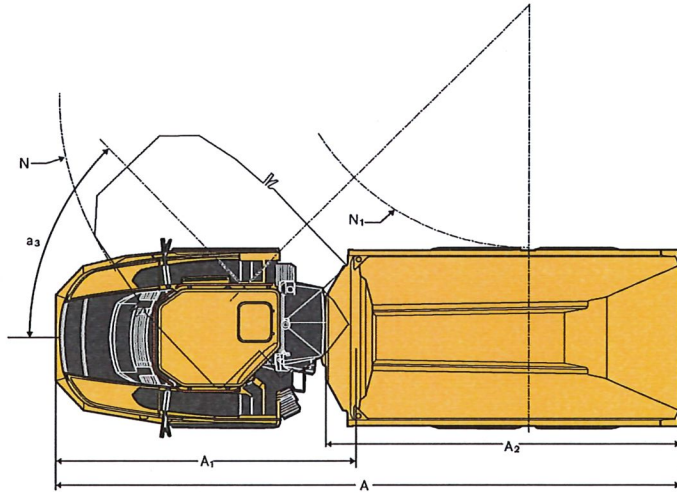
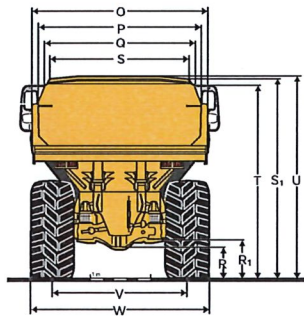
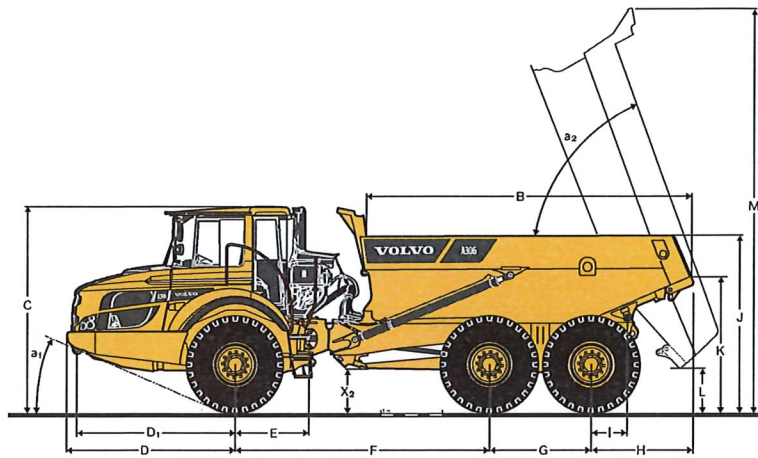
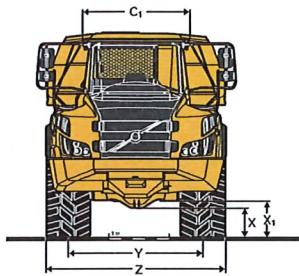
			A25G		A30G	
Tires			23.5R25*		750/65R25**	
Front	kg	lb	14,950	32,959	15,600	35,613
Rear	kg	lb	32,750	72,201	36,900	81,351
Total	kg	lb	47,700	105,160	52,600	115,963

*) A25G with tires 750/65R25, add 200 kg (440 lb)/axle

**) A30G with tires 23,5R25, decrease 200 kg (440 lb)/axle

GROUND PRESSURE

			A25G		A30G		A25G		A30G	
Tires			23.5R25		750/65R25		750/65R25		23.5R25	
Unloaded										
Front	kPa	psi	130	18.9	108	15.7	108	15.7	131	19
Rear	kPa	psi	49	7.1	43	6.2	42	6.1	50	7.3
Loaded										
Front	kPa	psi	157	22.8	130	18.9	125	18.1	157	22.8
Rear	kPa	psi	166	24.1	152	22	137	19.9	184	26.7



DIMENSIONS

Pos	Unit	A25G		A30G	
A	mm ft in	10,218	33'6"	10,296	33'9"
A ₁	mm ft in	4,954	16'3"	4,954	16'3"
A ₂	mm ft in	5,736	18'10"	5,811	19'1"
B	mm ft in	5,162	16'11"	5,384	17'8"
C	mm ft in	3,356	11'0"	3,366	11'1"
C ₁	mm ft in	1,772	5'10"	1,772	5'10"
D	mm ft in	2,762	9'1"	2,762	9'1"
D ₁	mm ft in	2,607	8'7"	2,607	8'7"
E	mm ft in	1,209	4'	1,209	4'
F	mm ft in	4,175	13'8"	4,175	13'8"
G	mm ft in	1,670	5'6"	1,670	5'6"
H	mm ft in	1,610	5'3"	1,688	5'6"
I	mm ft in	609	2'	609	2'
J	mm ft in	2,791	9'2"	2,866	9'5"
K	mm ft in	2,103	6'11"	2,183	7'2"
L	mm ft in	678	2'3"	688	2'3"
M	mm ft in	6,529	21'5"	6,562	21'6"
N	mm ft in	8,109	26'7"	8,109	26'7"
N ₁	mm ft in	4,092	13'5"	4,048	13'3"

DIMENSIONS

Pos	Unit	A25G		A30G	
O	mm ft in	2,776	9'1"	2,976	9'9"
P	mm ft in	2,490	8'2"	2,690	8'10"
Q	mm ft in	2,298	7'6"	2,472	8'1"
R	mm ft in	519	1'8"	524	1'9"
R ₁	mm ft in	633	2'1"	639	2'1"
S	mm ft in	2,110	6'11"	2,288	7'6"
T	mm ft in	3,094	10'2"	3,196	10'6"
U	mm ft in	3,265	10'9"	3,325	10'11"
V	mm ft in	2,258	7'5"	2,216	7'3"
W	mm ft in	2,915	9'7"	2,954	9'8"
X	mm ft in	455	1'6"	466	1'6"
X ₁	mm ft in	581	1'11"	592	1'11"
X ₂	mm ft in	660	2'2"	680	2'3"
Y	mm ft in	2,258	7'5"	2,216	7'3"
Z	mm ft in	2,915	9'7"	2,954	9'8"
a ₁	°	23.5		23.2	
a ₂	°	74		70	
a ₃	°	45		45	

A25G: Unloaded machine with 23.5 R25

A30G: Unloaded machine with 750/65R25

Equipment

STANDARD EQUIPMENT

	A25G	A30G
Engine		
Direct injected, electronically controlled, turbocharged, intercooled	•	•
* Grouped oil filters, for ease of change	•	•
Preheater for easier cold starts	•	•
* VEB (exhaust retarder EPG + compression brake)	•	•
Tires		
* 23.5R25	•	—
750/65R25	—	•
Drivetrain		
6x4 and 6x6 automatically engaged drive modes	•	•
Dog clutch type 100% diff-locks in all axles	•	•
Full automatic transmission	•	•
Dropbox with longitudinal diff-lock	•	•
Torque converter with automatic lock-up	•	•
Electrical system		
120 A alternator	•	•
Battery disconnect switch	•	•
Extra 24 V socket for lunch cooler	•	•
* Lights:	•	•
Back-up light	•	•
Brake lights	•	•
Cab lighting	•	•
* Direction indicators	•	•
* Headlights	•	•
Instrument lighting	•	•
Parking lights	•	•
* Rear lights	•	•
Brake system		
Hill assist	•	•
Load & Dump Brake	•	•
* Retarder pedal	•	•
Parking brake on propeller shaft	•	•
Two circuit, fully hydraulic, wet discs on all axles	•	•
Body		
Body prepared for exhaust heating and optional equipment	•	•
Safety		
Anti-slip steps and platforms	•	•
Dump body lock	•	•
Handrails on steps and platforms	•	•
Hazard lights	•	•
Horn	•	•
Protective grill for cab rear window	•	•
* Rear-view mirrors	•	•
Retractable 3-inch safety belt	•	•
ROPS/ FOPS protected Care Cab	•	•
Secondary steering	•	•
Steering joint lock	•	•
Windshield washers	•	•
* Windshield wipers with interval function	•	•
Dump support system	•	•

STANDARD EQUIPMENT

	A25G	A30G
Comfort		
* ACC control panel	•	•
Ashtray	•	•
* Cab heater with filtered fresh air and defroster	•	•
Can holder /storage tray	•	•
Cigarette lighter	•	•
Instructor seat with seat belt	•	•
Overhead console for radio	•	•
Sliding window	•	•
Space for lunch cooler	•	•
Storage box	•	•
* Sun visor	•	•
Tilt/telescopic steering wheel	•	•
* Tinted glass	•	•
Operator information interface		
Gauges:	•	•
Brake pressure	•	•
Fuel	•	•
Speedometer	•	•
Tachometer	•	•
Wet disc brakes cooling oil temperature	•	•
Warning lights grouped and easy to read		
Central warning (3 levels) for all vital functions	•	•
Central positioned information display		
Automatic pre-start checks	•	•
Clock	•	•
Hour meter	•	•
Operational information, easy-to-navigate menu	•	•
Troubleshooting diagnostics	•	•
Exterior		
* Front mudguard wideners and rear mudflaps	•	•
Service and maintenance		
Electrical engine hood	•	•
Machine Tracking Information System MATRIS	•	•
Service platform integrated in the front grill	•	•
Tool box	•	•

OPTIONAL EQUIPMENT

	A25G	A30G
Engine		
Air filter, heavy duty, EON	•	•
Engine heater, 120 V, USA	•	•
Engine heater, 240 V	•	•
Engine heater, diesel (Eberspächer)	•	•
Engine auto shutdown	•	•
Engine shutdown timer	•	•
External emergency engine stop	•	•
Fuel filter, extra	•	•
High engine idle speed	•	•
Tires		
23.5R25	—	•
750/65R25	•	—

OPTIONAL EQUIPMENT

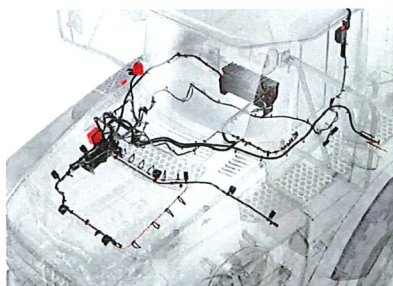
	A25G	A30G
Electrical system		
Headlights, LED	•	•
Warning beacon, LED	•	•
Working lights, halogen	•	•
* Working lights, LED	•	•
Entrance light	•	•
Anti-theft system (pin code)	•	•
Rear view camera	•	•
Reverse alarm	•	•
CAN-BUS interface, extra	•	•
Cab		
Noise reduction kit (fulfils 2000/14/EC)	•	•
Anchorage, operator's manual	•	•
Cab heating/ventilation timer	•	•
Cable kit, for cab heater 240 V	•	•
HEPA cab air filter	•	•
Bluetooth radio kit	•	•
Rear view mirrors, adjustable, el.heated	•	•
Seat belt XXL, non-retractable	•	•
Sun blinds, side windows	•	•
Universal key	•	•
* Air suspended, heated, fully adjustable seat	•	•
Armrest for operator seat	•	•
Headrest for operator seat	•	•
Low profile cab	•	•

OPTIONAL EQUIPMENT

	A25G	A30G
Body		
Body exhaust heating	•	•
Front spillguard, extra	•	•
Side extension, 200 mm / 7.9 in	•	•
Side extension, light material	•	•
Tailgate, overhung, linkage-operated	•	•
Tailgate, overhung, wire-operated	•	•
Tailgate, underhung	•	•
Wear plates, 450 HB	•	•
Underground body	•	•
Safety		
Fire suppression system	•	•
Warning triangle	•	•
First aid kit and fire extinguisher	•	•
Fire extinguisher	•	•
Wheel chocks	•	•
Service and maintenance		
Lube system, standard machine	•	•
Lube system, tailgate	•	•
Lubrication hose, ground level greasing	•	•
Tool kit	•	•
Other		
Siberian kit -40°C	•	•
On board weighing (OBW)	•	•
Arctic oil kit	•	•
CareTrack	•	•
Fast fuelling system	•	•
Jump start connector, NATO -type	•	•
Frame extension	•	•
Bogie extension	•	•

SELECTION OF VOLVO OPTIONAL EQUIPMENT

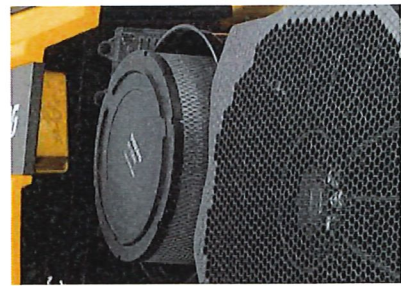
Volvo fire suppression system



Fast fuelling



Heavy duty air filter



On board weighing



LED lighting



Entrance light



Not all products are available in all markets. Under our policy of continuous improvement, we reserve the right to change specifications and design without prior notice. The illustrations do not necessarily show the standard version of the machine.



Volvo Construction Equipment

www.volvoce.com



Volvo Construction Equipment North America
Warranty – Disclaimers – Limitations
Limited Warranty

Volvo Construction Equipment North America ("Volvo CE") hereby extends to its authorized dealers ("Dealer") and the Dealer's end-use customers ("Customer", and both Dealer and Customer are referred to herein as a "Buyer"), who purchase a new Volvo construction equipment machine ("Machine") or new Volvo part ("Part", both of which are referred to herein as a "Product") from Volvo the following limited warranty:

Subject to the exceptions and limitations set forth below, Volvo CE or Dealer will repair or replace any part of a new Machine or new Part which proves to be defective in material or workmanship during the following periods (the "Warranty Period"):

- Volvo wheel loaders: 12 months/2500 hours, whichever first occurs
- Volvo articulated haulers: 12 months/2500 hours, whichever first occurs
- Volvo hydraulic excavators: 12 months/2500 hours, whichever first occurs
- Volvo motor graders: 12 months/2500 hours, whichever first occurs
- Volvo compactors: 12 months/2500 hours, whichever first occurs
- 24 month unlimited hours on DD90 and larger compactors
- Volvo pavers: 12 months/2500 hours, whichever first occurs
- 24 month unlimited hours on 6000 / 7000 series pavers
- Volvo milling: 12 months/2500 hours, whichever first occurs
- Volvo compact wheel loaders (up to 100 net hp.): 12 months/unlimited hours
- Volvo skid steer loaders: 12 months/unlimited hours; Lifetime arm for one-sided
- Volvo compact hydraulic excavators (less than 11 metric tons): 12 months/unlimited hours
- Volvo backhoe loaders: 12 months/unlimited hours
- Volvo engines: 12 months/2500 hours, whichever first occurs
- Volvo parts: 6 months/1500 hours, whichever first occurs
- Volvo remanufactured components: 12 months/2500 hours, whichever first occurs
- Volvo Attachments: 12 months

The Warranty Period commences immediately following the delivery of said Product to the Buyer who first puts said Product into use. The foregoing limited warranty shall include the labor cost to accomplish the repair or replacement of the defective part provided that the repair or replacement was performed by a Dealer.

The foregoing warranty does not cover: (i) any Product found to have been damaged by abuse, accident, other casualty or a failure to maintain or use the warranted Product in accordance with the applicable manuals or instructions (Buyer is required to use only original equipment manufacturer filters during the Warranty Period); (ii) the labor costs to repair or replace defective Parts after the expiration of the Warranty Period of the Machine in which such Part is located; (iii) overtime labor premiums; (iv) costs and expenses associated with the transportation of Dealer's service personnel to and from the location of the warranted Product; (v) any parts, components, attachments or accessories for which Buyer receives a separate warranty by the manufacturer or producer thereof (in specified cases said warranty may be administered by Volvo CE); (vi) maintenance items or ground engaging parts that have achieved their normal service life.

DISCLAIMER OF IMPLIED WARRANTIES AND LIMITATION OF REMEDIES

THE FOREGOING WARRANTY TO BUYER IS EXCLUSIVE AND IS IN LIEU OF ALL OTHER WARRANTIES, EXPRESSED OR IMPLIED, AND THERE IS NO IMPLIED WARRANTY OF MERCHANTABILITY OR FITNESS FOR A PARTICULAR PURPOSE.

REMEDIES AVAILABLE TO BUYER ARE LIMITED TO MAKING A CLAIM UNDER THE FOREGOING WARRANTY AND ARE EXCLUSIVE AND EXPRESSLY LIMITED TO OBTAINING THE PARTS AND LABOR IN ACCORDANCE WITH THE TERMS OF SAID WARRANTY.

Warranty – Disclaimers – Limitations

LIMITATIONS OF LIABILITY AND DAMAGES

Regardless of whether a claim against Volvo CE or Dealer is based on the foregoing warranty or is an action in contract, tort (negligence or strict liability) or otherwise, their respective liability for losses, damages or expenses of any kind arising from the design, manufacture, repair or sale of the Products is limited, unless otherwise prohibited by law, to an amount not exceeding the cost performing the obligations contained in the foregoing warranty, and in no event shall their respective or joint liability exceed the value of the Product or part thereof giving rise to such liability.

CONSEQUENTIAL AND SIMILAR DAMAGES NOT RECOVERABLE

Except for performing the obligations of the foregoing warranty in accordance with its terms, Volvo CE and Dealer shall have no liability for loss, damage, or expense, directly or indirectly, attributable to a loss of use of a Product, loss or damage to property other than the Product, loss or damage to the Product or any part thereof or any other economic or commercial loss, including, without limitation, lost profits or special or consequential damages (except liability for any type of consequential damages which by law may not be disclaimed). The parties intend that this prohibition against consequential and similar damages will survive and be effective even if the limitation of remedies in the foregoing sections is found to fail of its essential purpose under section 2-719 of the Uniform Commercial Code.

ALLOCATION OF RISK

The foregoing warranty disclaimers, limitations of liability and limitation of remedies are bargained allocations of risks among (i) the Customer who purchased the Product; (ii) the Dealer who sold the Product, and (iii) Volvo CE, which is a third party beneficiary of the contract of sale between the Customer and the Dealer. The Buyer of the Product accepts the foregoing warranty and the other bargained for allocations of risk as part of the agreed price for the purchase of the Product to which the foregoing warranty applies. Volvo CE is prepared to offer different warranties and other allocations of risk for other prices. However, any such change in the warranty or the allocation of risks must be confirmed in writing by Volvo CE.

STATUTE OF LIMITATIONS

Any action by a Buyer of a Product for breach of contract, for breach of warranty arising under, or for a cause of action arising out of the sale of a Product, whether based on contract, tort (negligence or strict liability) or otherwise, shall be commenced within one (1) year after the cause of action has accrued. Any such cause of action shall be deemed to have accrued at the earlier of (i) the discovery of the defect or breach, or (ii) the expiration of the applicable Warranty Period.