

Item # 450

Trail King TK80HT Hydraulic Tail Trailer

Vendor Contact Information:

Kevin Gray
Governmental Sales Manager
Alta Construction Equipment
Florida
8418 Palm River Road
Tampa, FL 33619
Office: 813-630-0077
Cell: 813-391-8159
Email: kgray@altaequipfl.com

Model: Trail King TK80HT Hydraulic Tail Trailer

| Description | Article |
|---|---------|
| TK80HT | 12815 |
| 50' 11" Overall Length | 14797 |
| 102" Wide | 10891 |
| 13/8" Apitong Decking | 10908 |
| 49" Axle Spacing | 14800 |
| 2 Tool Boxes at Front of Upper Deck | 14801 |
| 2 Speed Landing Gear | 14806 |
| 10-GA Floor Plate Decking on Upper Deck | 14802 |
| 1/4" Floor Plate Over Wheels | 14185 |
| Star Traction on Tail | 10857 |
| (2) 25,000 Lb. Axles | 14811 |
| 235/75R X 17.5 Tires | 10879 |
| Air Ride Suspension | 14810 |
| LED Lights | 14815 |
| 12,000 LB. Hydraulic Winch | 10837 |

Advantage Series Hydraulic Tail Trailer



*Advantage*TM

**Series
Hydraulic
Tail Trailer**



*Advantage*TM

SERIES

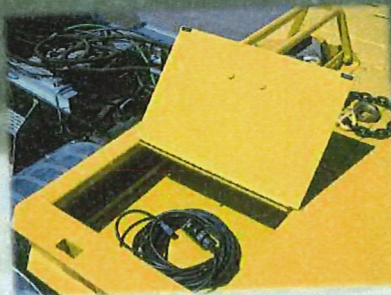
Advantage™

Series Hydraulic



Front Access Panel

The Trail King standard front access panel offers easy access for connecting hydraulic, air and electrical lines. The panel may be opened for internal maintenance or repair simply by loosening four bolts.



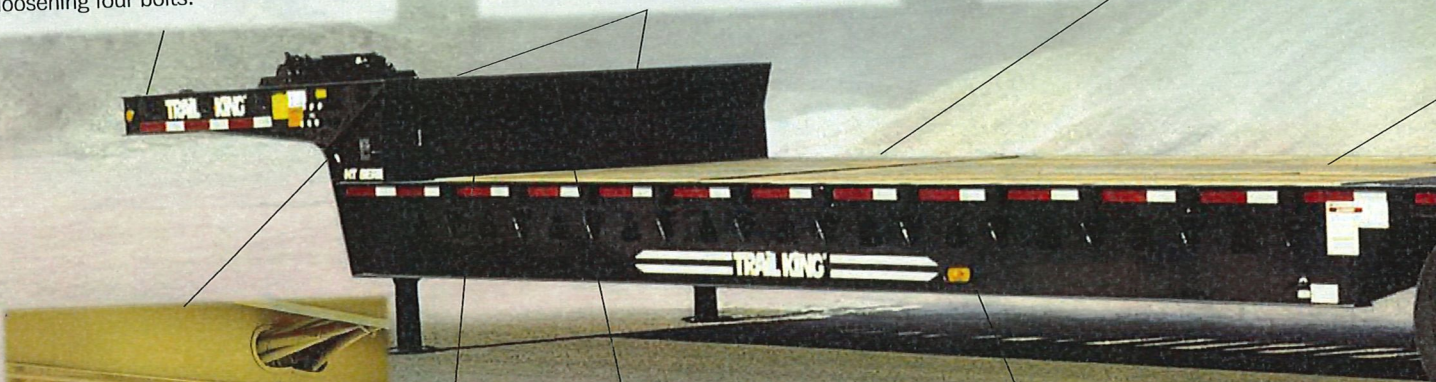
Tool Boxes

Haul your tools as well as your load... thanks to two covered tool boxes in the top deck that come as standard equipment.



Upper Deck Ramp

An 8' hydraulic recessed ramp to the upper deck is standard. A special locking mechanism (see inset) ensures that the upper deck ramp stays in place during loading, even if the hydraulics should fail.



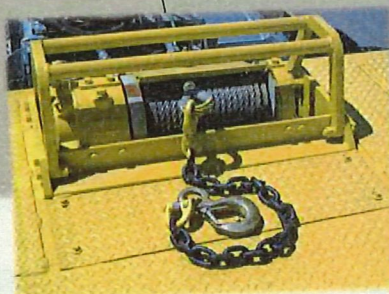
Valve Cover

A protective panel on the underside of the gooseneck shields the hydraulic valving from road grime and debris, resulting in reduced maintenance and longer life.



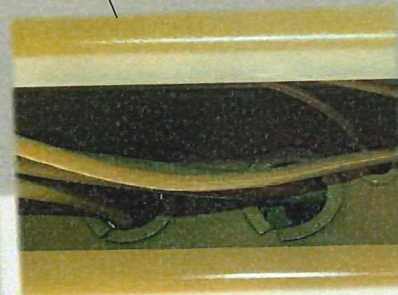
Reinforced Gooseneck

To prevent cracking and provide extra strength, the gooseneck is reinforced with a half-moon gusset and a brace that runs the full depth of the beam.



Winch

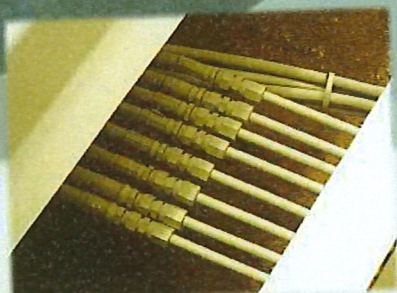
Even "dead" equipment can be loaded with ease with the standard 12,000-lb. winch with level wind (mounted above the king pin). Winch guard and 65' cable with locking safety hook are also standard.



Wiring

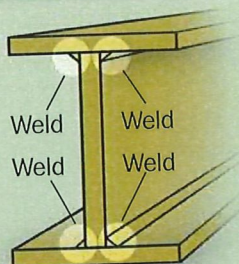
Rubber grommets are used wherever wiring runs through the frame in order to eliminate wear, reduce maintenance and repair, and deliver dependable electrical component performance.

Tail Trailer



Hydraulic Lines

The hydraulic system features steel lines under the deck, and JIC fittings and O-ring seals at connection points for dependable, leak-free performance.



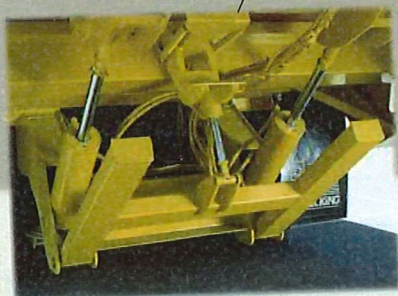
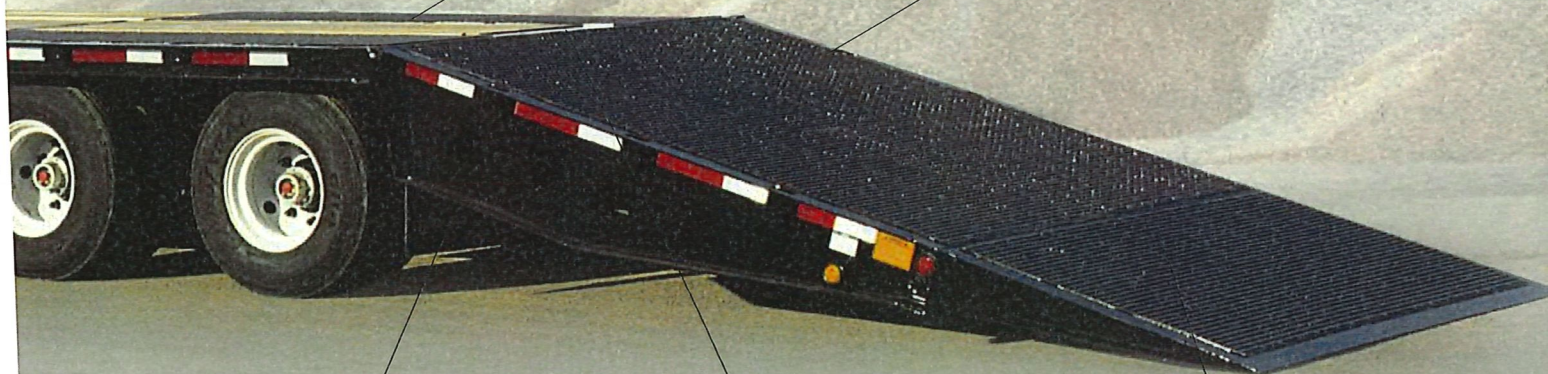
One-Piece Construction

Trail King I-beams are constructed of one-piece web and flange material and welded on all four sides to seal and protect the seams from rust. The result is an I-beam that is not only stronger... but one that is stronger longer.



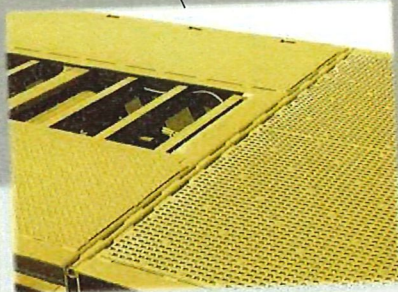
Paint

Crossmembers are primed and topcoated with two-component polyurethane primer and topcoat before decking is installed. So the entire trailer has protection from the elements – even in places you can't see.



H-Bar Transport Lock

Standard H-bar assembly allows the load to be carried on the tail in the transport position and without putting weight on the hydraulic cylinders. The result... more deck space available without compromising a safe, stable haul.



Tail Hinge

The tail features a heavy-duty hinge that runs the whole width of the deck for the rugged, durable, trouble-free operation necessary to handle heavy loads and continuous usage.



Eight-Beam Approach Plate

Two outside I-beams provide the extra strength necessary to prevent "peeling off" the edge of the ramp during loading. The six formed beams in between provide solid support across the whole width of the approach plate.

Advantage™

Series Hydraulic Tail Trailer



With the push of a lever, the hydraulic tail can be lowered to load from ground level...

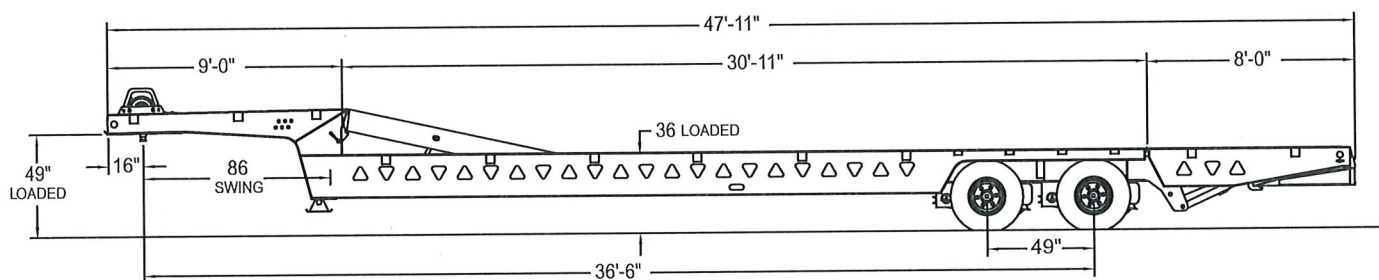


...or raised to load from a dock up to 58" in height, without the use of ramps or forklifts.



The hydraulic recessed upper deck ramp allows you to load the upper deck and maximize your hauling capacity.

STANDARD CONFIGURATION



STANDARD EQUIPMENT

Capacity: 80,000 lbs uniform / 50,000 lbs in 10 ft.
 47'-11" Overall Length
 102" wide
 36" loaded deck height (with 17.5 tires)
 49" loaded 5th wheel height
 16" king pin setting with 86" swing clearance
 9' 0" straight drop upper deck
 2 tool boxes at front of upper deck
 8' hydraulic recessed upper deck ramp
 12,000 lb. hydraulic winch with level wind (mounted above king pin)
 Winch guard
 65' winch cable with locking safety hook
 Wireless remote for winch (1 function, 2 buttons)
 10-ga. floor plate decking on upper deck
 1 3/8" (NET) apitong deck raised w 1/4" floor plate over wheels
 8" and 10" cross members on 12" centers
 100,000/80,000 psi yield strength steel construction
 External stake pockets on 48" centers alternating
 with internal key slots for a tie down every 24"
 Star Traction over steel on last 3' of wheel covers, tail, and folder under
 11'10" hydraulic tail with 46" fold-under, 14° load angle
 Tail raises to 58" dock height and lowers to ground
 Hydraulic actuated tail lock

Vertical supports inside fold under
 Air ride suspension
 Air ride lowering with switch on upper deck
 (2) 25,000 lb axles (5/8" wall)
 49" axle spacing
 4S2M ABS Brakes
 Automatic slack adjusters
 Steel hub-piloted - cast drum
 6.5 x 17.5 8-hole steel disc wheels
 One-piece oil seals
 Pro Tork axle nuts
 235/75R x 17.5 radial tires
 Dual hydraulic controls (each side)
 Pin-type park stands
 LED lights, 50 state legal
 Three tail lights per side (amber in center)
 Electrical system per DOT regulations
 Midturn signal clearance lights
 Rubber-mounted sealed lights with sealed harness system
 Mud flaps
 Red & white conspicuity markings
 Paint: Trail King 2 part polyurethane

All specifications are subject to change without notice. Trailers pictured in this brochure may feature optional equipment.



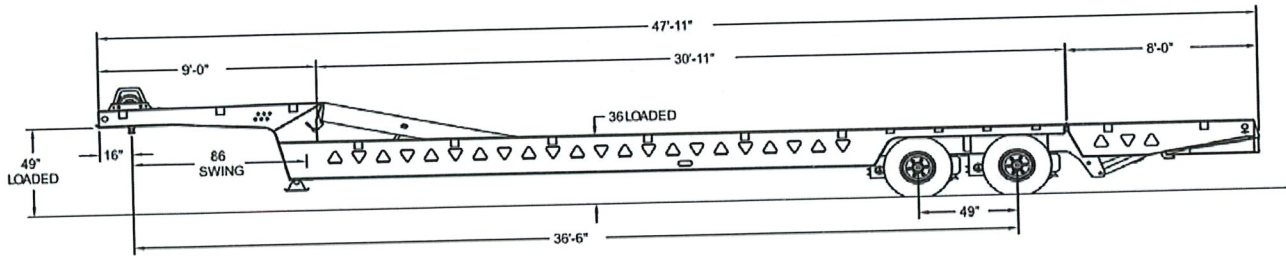
TRAIL KING Industries

Advantage™
 SERIES

P.O. Box 7064 ■ Mitchell, SD 57301 ■ 800-843-3324 U.S. & Canada ■ 605-996-6482 ■ Fax: 605-996-4727 ■ www.trailking.com

All rights reserved Trail King Industries, Inc. FORMTKAHT2/2012-2.5

TRAIL KING HYDRAULIC TAIL TRAILER "ADVANTAGE" SERIES



TK80HT Advantage Series Hydraulic Tail Trailer

10833 - STANDARD EQUIPMENT

Tail raises to 58" dock height and lowers to ground
Hydraulic actuated tail lock
Vertical supports inside fold under

Rubber-mounted sealed lights with sealed harness system
Red & white conspicuity markings

| Item # | Description | Price |
|-------------------------------|--|--------|
| BASE MODEL | | |
| 10833 | TK80HT Advantage Series Hydraulic Tail Trailer, 80,000 lbs uniform / 50,000 lbs in 10 ft. | 78,965 |
| OVERALL LENGTH | | |
| Standard Option | | |
| 14796 | 47' 11" Overall Length | 0 |
| Substitute Options | | |
| 14797 | 50' 11" Overall Length | 1,059 |
| 14798 | 52' 11" Overall Length | 1,557 |
| OVERALL WIDTH | | |
| Standard Option | | |
| 14799 | 102" wide | 0 |
| FIFTH WHEEL / KING PIN | | |
| Standard Option | | |
| 14800 | 49" loaded 5th wheel height | 0 |
| UPPER DECK | | |
| Standard Option | | |
| 10834 | 9'0" Straight drop upper deck (16" kingpin setting with 86" swing clearance) | 0 |
| Substitute Options | | |
| 10835 | 10'0" straight drop upper deck (16" pin setting / 98" swing clearance) | 193 |
| 10836 | 8'0" with 45° slope, (16" pin setting / 86" swing clearance) requires "10838 - Delete hydraulic upper deck ramp" | -3,372 |
| Standard Option | | |
| 14801 | 2 tool boxes at front of upper deck | 0 |
| Standard Option | | |
| 14802 | 10-ga. floor plate decking on upper deck | 0 |
| UPPER DECK RAMP | | |
| Standard Option | | |
| 10837 | 8' Hyd. recessed upper deck ramp (12" less than deck width) | 0 |
| Substitute Options | | |
| 10838 | Delete hydraulic upper deck ramp | -3,059 |
| WINCH | | |
| Standard Option | | |
| 10839 | 12,000 lb. hydraulic winch with level wind (mounted above king pin) | 0 |
| Substitute Options | | |
| 10840 | 20,000 lb. hydraulic winch ILO standard mounted above king pin | 2,623 |
| Standard Option | | |
| 14803 | 80' winch cable with locking safety hook | 0 |
| Standard Option | | |
| 10878 | Winch guard | 0 |
| Substitute Options | | |
| 10841 | Delete Winch guard | -405 |
| Standard Option | | |
| 14181 | Winch Cable Skid Plate at Rear of Upper Deck | 0 |
| Substitute Options | | |
| 10842 | Winch roller (Recessed at rear of upper deck) | 413 |

| Item # | Description | Price |
|-------------------------------------|--|--------|
| HYDRAULIC & CONTROLS | | |
| Standard Option | | |
| 10868 | Wireless Remote for winch (1 functions, 2 buttons) | 0 |
| Substitute Options | | |
| 10869 | Wireless remote, full (6 functions, 12 buttons) | 4,101 |
| Standard Option | | |
| 14804 | Dual Hydraulic controls (each side) | 0 |
| Standard Option | | |
| 14805 | Ramp lock handles on each side of upper deck | 0 |
| Standard Option | | |
| 10843 | PTO hydraulic tilt | 0 |
| Substitute Options | | |
| 10844 | 688cc Honda SCU with cover (mounted above winch) | 6,468 |
| LANDING GEAR | | |
| Standard Option | | |
| 14806 | 2-speed park stands (crank curb side) | 187 |
| MAIN DECK | | |
| Standard Option | | |
| 10847 | Single drop deck | 0 |
| Substitute Options | | |
| 10848 | Double drop deck, 6" drop approx 10° angle | 6,038 |
| Standard Option | | |
| 14807 | 11'10" hydraulic tail with 46" fold-under, 14° load angle | 0 |
| Standard Option | | |
| 14808 | 8" and 10" crossmembers on 12" centers | 0 |
| Standard Option | | |
| 14809 | Stainless steel hinge pins on main tail and fold-under | 0 |
| Additional Options | | |
| 14184 | Expansion Kit for Full Width Ramp | 549 |
| DECKING, MAIN DECK | | |
| Standard Option | | |
| 10849 | 1 3/8" (NET) apitong deck raised | 0 |
| DECKING, WHEEL AREA | | |
| Standard Option | | |
| 14185 | 1/4" floor plate over wheels W/ Last 3' Star Traction over 1/4" Smooth Steel W/ Wood in Center Bay | 0 |
| DECKING, TAIL | | |
| Standard Option | | |
| 10857 | Star Traction over Smooth Steel | 0 |
| Substitute Options | | |
| 10858 | Flush 1 3/8" apitong decking | -1,128 |
| 10859 | Star Traction outside 28" over 10 ga Smooth Steel, flush apitong inner | -282 |
| 10860 | 1/2" Traction Aids outside 28" 8.50" OC over 3/16" Smooth Steel, flush apitong inner | -399 |
| 10861 | 1/2" Traction Aids outside 28" 8.50" OC over full width 3/16" floor plate | -249 |
| DECKING, FOLD UNDER APPROACH | | |
| Standard Option | | |
| 10862 | Star Traction over Smooth Steel | 0 |
| Substitute Options | | |
| 10863 | 1/4" floor plate | -280 |
| 14186 | Star Traction outside 28" over 10 ga Smooth Steel | -282 |
| 14187 | 1/2" Traction Aids outside 28" 8.50" OC over 3/16" Smooth Steel | -399 |
| 14188 | 1/2" Traction Aids outside 28" 8.50" OC over full width 3/16" floor plate | -249 |

| Item # | Description | Price |
|----------------------------|---|-------|
| TIE DOWNS | | |
| Standard Option | | |
| 10851 | External stake pockets on 48" centers alternating with internal key slots for a tie down every 24" | 0 |
| Substitute Options | | |
| 10852 | Delete stake pockets, internal keyslots will be 24" OC where possible | -222 |
| Standard Option | | |
| 10941 | Triangle cut-outs | 0 |
| Substitute Options | | |
| 10942 | Delete triangle cut-outs | -91 |
| Additional Options | | |
| 10854 | Add exterior bent d-rings on 48" centers | 549 |
| 10855 | Add recessed d-rings on 48" centers | 1,830 |
| 10856 | Add chain stops (between stake pockets on 48" centers) | 365 |
| 12800 | 4-way keyhole slots down the center of upper deck (Approx 48" OC) - Flush with decking | 260 |
| 12801 | 4-way keyhole slots down the center of upper deck ramp (Approx 48" OC) - Flush with decking | 137 |
| 12802 | 4-way keyhole slots down the center of main deck and wheel area (Approx 48" OC) - Flush with decking | 720 |
| 12803 | 4-way keyhole slots down the center of tail (Approx 48" OC) - Flush with decking | 182 |
| SUSPENSIONS/ AXLES | | |
| Standard Option | | |
| * 14810 | Air Ride suspension | 0 |
| Standard Option | | |
| * 14811 | (2) 25,000 lb. capacity axles | 0 |
| Standard Option | | |
| 14182 | Air Ride Lowering with switch on Drivers Side of Upper Deck | 0 |
| Substitute Options | | |
| 14183 | Air Ride Lowering with switch on Both Side of Upper Deck | 327 |
| AXLE SPACING | | |
| Standard Option | | |
| 14812 | 49" axle spacing | 0 |
| BRAKES | | |
| Standard Option | | |
| * 10870 | 12.25 X 7.5 Drum brakes for 17.5 wheels only | 0 |
| Substitute Options | | |
| 10871 | Disc Brakes for 22.5 wheels only | 6,702 |
| 12716 | 16.5 x 7 Drum brakes for 22.5 wheels only | 0 |
| TIRE AND WHEEL SIZE | | |
| Standard Option | | |
| 10879 | For 36" deck height, select 17.5 wheels and tires | 0 |
| Substitute Options | | |
| 10880 | For 38 1/2" deck height, select 22.5 wheels and tires | 0 |
| WHEELS (INSIDE) | | |
| Standard Option | | |
| 08182 | 6.75 x 17.5 8-hole steel disc wheel | 0 |
| Substitute Options | | |
| 15003 | 6.75 x 17.5 8-hole machined (SP) aluminum wheel (per wheel) ILO Std 6.75 x 17.5 8-hole steel disc wheel | 168 |
| 15004 | 6.75 x 17.5 8-hole polished (XP) aluminum wheel (per wheel) ILO Std 6.75 x 17.5 8-hole steel disc wheel | 194 |
| 15022 | 7.50 x 22.5 10-hole steel disc wheel (per wheel) ILO Std 6.75 x 17.5 8-hole steel disc wheel | 42 |
| 15023 | 7.50 x 22.5 machined (SP) aluminum (per wheel) ILO Std 6.75 x 17.5 8-hole steel disc wheel | 208 |
| 15024 | 7.50 x 22.5 polished (XP) aluminum (per wheel) ILO Std 6.75 x 17.5 8-hole steel disc wheel | 249 |
| WHEELS (OUTSIDE) | | |
| Standard Option | | |
| 08192 | 6.75 x 17.5 8-hole steel disc wheel | 0 |
| Substitute Options | | |
| 15003 | 6.75 x 17.5 8-hole machined (SP) aluminum wheel (per wheel) ILO Std 6.75 x 17.5 8-hole steel disc wheel | 168 |
| 15004 | 6.75 x 17.5 8-hole polished (XP) aluminum wheel (per wheel) ILO Std 6.75 x 17.5 8-hole steel disc wheel | 194 |
| 15022 | 7.50 x 22.5 10-hole steel disc wheel (per wheel) ILO Std 6.75 x 17.5 8-hole steel disc wheel | 42 |
| 15023 | 7.50 x 22.5 machined (SP) aluminum (per wheel) ILO Std 6.75 x 17.5 8-hole steel disc wheel | 208 |
| 15024 | 7.50 x 22.5 polished (XP) aluminum (per wheel) ILO Std 6.75 x 17.5 8-hole steel disc wheel | 249 |

| Item # | Description | Price |
|--|---|-------|
| SPARE WHEELS | | |
| Standard Option | | |
| 10058 | No Spare Wheel | 0 |
| Substitute Options | | |
| 15302 | 6.75 x 17.5 8-hole steel disc wheel (per wheel) | 158 |
| 15303 | 6.75 x 17.5 8-hole machined (SP) aluminum wheel (per wheel) | 326 |
| 15304 | 6.75 x 17.5 8-hole polished (XP) aluminum wheel (per wheel) | 352 |
| 15322 | 7.50 x 22.5 10-hole steel disc wheel (per wheel) | 199 |
| 15323 | 7.50 x 22.5 machined (SP) aluminum (per wheel) | 366 |
| 15324 | 7.50 x 22.5 polished (XP) aluminum (per wheel) | 407 |
| TIRES | | |
| Standard Option | | |
| 07907 | Continental 235/75R17.5 HTL2 - 18 ply | 0 |
| Substitute Options | | |
| 16123 | General 255/70R22.5 HT - 16 Ply (tire only) (per tire) ILO Std Continental 235/75R17.5 HTL2 - 18 ply | 30 |
| 16137 | Bridgestone 255/70R22.5 R197 Ecopia - 16 ply (tire only) (per tire) ILO Std Continental 235/75R17.5 HTL2 - 18 ply | 69 |
| 16142 | Michelin 255/70R22.5 XZE - 16 ply (tire only) (per tire) ILO Std Continental 235/75R17.5 HTL2 - 18 ply | 144 |
| 16152 | Yokohama 255/70R22.5 - 16 ply RY023 (tire only) (per tire) ILO Std Continental 235/75R17.5 HTL2 - 18 ply | 134 |
| SPARE TIRES | | |
| Standard Option | | |
| 10059 | No spare tire | 0 |
| Substitute Options | | |
| 16902 | Continental 235/75R17.5 HTL2 - 18 ply (tire only) (per tire) | 314 |
| 16905 | Continental 255/70R22.5 HSR2 SA - 16 ply (tire only) (per tire) | 373 |
| 16923 | General 255/70R22.5 HT - 16 Ply (tire only) (per tire) | 344 |
| 16937 | Bridgestone 255/70R22.5 R197 Ecopia - 16 ply (tire only) (per tire) | 383 |
| 16942 | Michelin 255/70R22.5 XZE - 16 ply (tire only) (per tire) | 458 |
| 16952 | Yokohama 255/70R22.5 - 16 ply RY023 (tire only) (per tire) | 448 |
| FLAPS, MUD GUARDS & FENDERS | | |
| Standard Option | | |
| 14813 | Mudflaps | 0 |
| LIGHTS / ELECTRICAL | | |
| Standard Option | | |
| 14814 | Grote Electrical system (meets DOT regulations) | 0 |
| Standard Option | | |
| 14815 | LED lights | 0 |
| Standard Option | | |
| 14816 | Combination midturn signal/center marker light | 0 |
| Standard Option | | |
| 10864 | 3rd Tail Light Package | 0 |
| Substitute Options | | |
| 10865 | One pair of 4" round amber strobes (with switch) at rear in lieu of 3rd tail light | 348 |
| Additional Options | | |
| 10866 | 4-pole female electrical at rear, road side, wired to clearance light | 56 |
| 10867 | Recessed working LED lights in GN drop w/ switch (per pair) | 590 |
| FLAGHOLDERS | | |
| Standard Option | | |
| 14817 | Flag Holders at rear of trailer | 0 |
| Substitute Options | | |
| 14818 | Flag Holders at front and rear of trailer | 135 |
| MISCELLANEOUS | | |
| Additional Options | | |
| 10873 | Hubodometer | 211 |
| 10874 | Air Weigh system (per Advantage HT axle group) - read-out located on GN near hydraulic controls | 1,126 |
| 10875 | PSI Tire Inflation System (2 axle) | 1,368 |
| 10876 | Cat's Eye Tire Equalization System (2 axle) | 527 |
| 10877 | Cross-Fire Tire Equalization System (2 axle) | 497 |
| 14189 | Liquid filled air pressure gauge in Main Deck | 163 |
| 14190 | Fold-down step with latch and handle Driver Side | 379 |
| 14191 | Fold-down step with latch and handle Curb Side | 379 |
| 14192 | Add Gas Shock to Upper Deck Tool Boxes | 111 |
| 08569 | DOT Inspection | 147 |

| Item # | Description | Price |
|---------------------------|---|-------|
| PAINT | | |
| Standard Option | | |
| 08009 | Epoxy primer | 0 |
| Substitute Options | | |
| 14561 | Zinc-rich primer | 2,510 |
| Standard Option | | |
| 08024 | Black S7203 with white decals | 0 |
| 08026 | New CAT Yellow S7225 with black decals | 0 |
| 08029 | GM12 White with black decals | 0 |
| 08030 | IH Red S7205 with white decals | 0 |
| 08031 | Grey Metallic S7230 with black decals | 0 |
| 08032 | Dark Grey Metallic S7265 with white decals | 0 |
| Substitute Options | | |
| 14618 | Hertz Yellow 7239 with black decals | 600 |
| 14619 | Light Red 7206 with white decals | 600 |
| 14620 | Bottom Dump Blue 7247 with white decals | 600 |
| 14621 | Platinum Silver with black decals | 600 |
| 14622 | N0108 Green with white decals | 600 |
| 14623 | Miller Blue with white decals | 600 |
| 14624 | Off-White 7222 with black decals | 600 |
| 14625 | Viper Red with white decals | 600 |
| 14626 | Dark Concord Blue Metallic 7255 with white decals | 600 |
| 14627 | Wheatland Yellow with black decals | 600 |
| 14628 | Bright Blue 7256 with white decals | 600 |
| 14629 | 224 Safety Yellow with black decals | 600 |
| 14630 | Non-Metallic color match paint upcharge | 1,200 |
| 14631 | Metallic color match paint upcharge | 1,653 |

* To meet 1997 federal requirements, Trail King offers two variations of the anti-lock braking system.
The minimum 2S1M system is available, but Trail King recommends the 4S2M system.

CAPACITY RATINGS ARE FRAME CAPACITIES ONLY. ACTUAL LOAD CAPACITIES MAY BE RESTRICTED BY FACTORS SUCH AS
GROSS AXLE WEIGHT RATINGS (GAWR) OR STATE AND FEDERAL REGULATIONS.
FEDERAL RETAIL EXCISE TAX MUST BE FIGURED ON THE SELLING PRICE WHEN SELLING TO A NON-EXEMPT END USER.



EFFECTIVE 9/24/18. PRICES AND SPECS ARE SUBJECT TO CHANGE WITHOUT NOTICE.

TRAIL KING CONSTRUCTION DIVISION

ALL RIGHTS RESERVED. TRAIL KING INDUSTRIES, INC., 2018



THE COMPLETE TRAILER LINE MANUFACTURER

TRAIL KING INDUSTRIES, INC. LIMITED WARRANTY POLICY

WARRANTY:

Trail King Industries, Inc. warrants that trailer model: _____, Serial number: _____ (herein-after referred to as "Equipment") manufactured by Trail King Industries will be free from defects in materials and workmanship, provided that the Equipment warranted hereunder is operated by the purchaser in accordance with the practices approved by Trail King Industries with loads not exceeding the manufacturer's rated capacities and with loads that are not abrasive or corrosive in nature.

Trail King Industries' sole obligation under this warranty shall be limited to repairing or replacing, at its option, in accordance with the schedule below, any defective part of the warranted Equipment, which shall be returned to Trail King Industries' factory location or authorized service facilities and then Trail King Industries' examination shall disclose to its satisfaction to have been defective; provided, however, that the purchaser notifies the Warranty Department immediately upon identification of defect, and such defective Equipment is returned by the purchaser to a Trail King Industries location authorized by the Warranty Department of Trail King Industries with transportation and freight charges prepaid within fifteen (15) days after discovery of defective conditions.

The customer shall not be required to deliver defective Equipment to Trail King Industries if the Equipment was destroyed as a result of defect covered in this warranty and the Trail King Industries Warranty Department is reasonably satisfied that the Equipment was defective at the time of the sale.

All labor and parts warranty must be authorized by Trail King Industries Warranty Manager. Failure to do so will result in no warranty payment of any kind.

THIS WARRANTY IS EXPRESSLY IN LIEU OF ALL OTHER WARRANTIES OF MATERIAL, WORKMANSHIP, DESIGN, APPLICATION OR OTHERWISE WITH RESPECT TO ANY EQUIPMENT, WHETHER EXPRESS OR IMPLIED, INCLUDING WARRANTIES OF MERCHANTABILITY AND FITNESS FOR A PARTICULAR PURPOSE, AND OF ALL OTHER OBLIGATIONS OR LIABILITIES ON THE PART OF TRAIL KING INDUSTRIES.

Components supplied by other manufacturers shall be warranted under the following schedule:

| | | |
|------|--|---|
| I. | Axles, Suspensions, Landing Gear, Wheels, Rims, Hubs Hydraulic Valve Body | One Year 100% |
| II. | Air Lines, Springs, Air Bags, Leveling Valves, Bearings, Brake Valves, Paint, Oil Seals, Brake Drums, Shock Absorbers, Electrical, Cylinders, Hydraulic Hoses & Connections, Floor Plastic, Plastic Liners, Rubber Flashing | Six Months 100% |
| III. | Tires, Tubes and Engines | Warranty claims must be made directly to component suppliers |
| IV. | Wood Components | 0% |

Trail King Open Deck Series & Van Chassis (i.e. Medical Chassis)

Trail King Industries shall bear that portion of the cost of repairing or replacing the main beams, (The two beams running from front to back that both the upper coupler and the suspension are connected to) found to be defective under the following schedule: This excludes all parts that may be bolted, welded or otherwise attached to the main beams.

| | | | | |
|--|--------------|---------------|--------------|--------------|
| Year 1 - 100% | Year 2 - 75% | Year 3 - 50% | Year 4 - 25% | Year 5 - 25% |
| All other Trail King manufactured components | | One Year 100% | | |

Trail King Dump Series:

| | |
|---|---------------|
| Bottom Dump, Side Dump, Half Round Trailers, and Steel Tub Bed Dumps: | |
| All Trail King manufactured components | One Year 100% |

(continued...)

TRAIL KING INDUSTRIES, INC. • P.O. Box 1064 • Mitchell, SD 57301-1064 USA • 605-843-0324 • Fax: 605-886-4727 • www.trailking.com

(continued from front...)

Trail King Pneumatic Bulker Series:

| | | | |
|--|---------------|--------------|--------------|
| All Trail King manufactured components | One Year 100% | | |
| Frame, Struts, Vessel | Year 1 – 100% | Year 2 – 75% | Year 3 – 50% |

Trail King Live Bottom Series:

The period of warranty is set forth as follows

Construction Live Bottom Trailers, 5-Star Trailers, and Advantage Ag Trailers (Continuous Belt):

| | | | | | |
|-----|--|--------------|--------------|--------------|--------------|
| I. | Gear box, Motor and Drive Shaft, and Individual Chain Strands Only | | | | |
| | Year 1 – 100% | Year 2 – 75% | Year 3 – 50% | Year 4 – 25% | Year 5 – 25% |
| II. | Trail King manufactured components. | Year 1 | 100% | | |
| | This excludes all hopper sheets. | Year 2 | 75% | | |

Aluminum Super Hi-Lite and Advantage Ag Trailers (Segmented Belt):

| | | | |
|-----|---|--------|------|
| I. | Chain, Gear box, Motor and Drive shaft. | Year 1 | 100% |
| II. | Components Manufactured by Trail King. | Year 1 | 100% |
| | | Year 2 | 75% |

All other warranties, if any, extended by the makers and suppliers of component parts, accessories, or other goods included in the manufacture of Trail King Industries' Equipment will be assigned, if contractually permitted, to the purchaser. This warranty excludes such parts or accessories which are not defective, but may wear out and have to be replaced during the warranty period, including, but not limited to, light bulbs, paint, brake lining, brake drums, wood pieces and equipment that has been repaired, replaced, or altered by someone other than TRAIL KING or one of its authorized dealers. (Tire Warranties are expressly excluded from Trail King Industries' warranty herein.) Purchaser is expected to pay all repairs or replacement costs, in connection with this Agreement, including sales and other taxes immediately upon completion of work performed.

LIMITATION OF LIABILITY: Trail King Industries shall not be liable to purchaser for any incidental or consequential damages suffered by the purchaser, including, but not limited to, any commercially reasonable charges, expenses or commissions incurred in connection with effecting cover or any other reasonable expense incident to the delay or other breach of warranty by Trail King Industries, any loss of or damage to any cargo loaded or shipped in or on Equipment, loss of anticipated profits, transportation expenses due to repairs, non-operation or increased expense of operation costs of purchased or replaced equipment, claim of customers, cost of money, any loss of use of capital or revenue, or for any special damage or loss of any nature arising at any time or from any cause whatsoever.

LIMITATION OF REMEDY: In the event of Trail King Industries' failure to repair the Equipment subject to the warranty contained herein, the purchaser's sole and exclusive remedy against Trail King Industries shall be for the repair or replacement of any defective part or parts of Equipment subject to work or repair within the time period and manner set forth herein. This exclusive remedy shall not be deemed to have failed of its essential purpose so long as Trail King is willing and able to repair or replace defective parts in the prescribed manner.

January 2011