

Item # 183

Volvo L60H Wheel Loader

**Vendor Contact Information:**

Kevin Gray  
Governmental Sales Manager  
Alta Construction Equipment  
Florida  
8418 Palm River Road  
Tampa, FL 33619  
Office: 813-630-0077  
Cell: 813-391-8159  
Email: [kgray@altaequipfl.com](mailto:kgray@altaequipfl.com)

## Model: Volvo L60H Wheel Loader

Description	Article
Volvo L60H, Wheel Loader	L60H
20.5R25* BR VJT	WL20016
4-Rims (3pc) for 20.5 or 600 tires	WL21004
Engine D6J (Tier 4F) US	WL32017
Max Fan Speed	WL30002
Fuel fill strainer	WL30007
Delayed Engine Shutdown	WL30024
Reversible Cooling Fan	WL37001
Volvo Air Suspension Seat	WL41010
Air conditioning with ACC (automatic climate control)	WL42001
Steering knob	WL45001
Sliding window in door	WL45003
ACC Farenheit decal only	WL45004
Universal key	WL45005
Cab Ladder, Rubber Suspended	WL45006
Lunch box holder	WL45023
Anchorage manual	WL45027
LH Armrest	WL45040
Co-Pilot Including RV Camera	WL45057
Work Lights, Dual Front	WL50008
Work Lights, Dual Rear	WL50010
LOTO	WL53009
Back up alarm	WL54001
Footsteps front frame	WL71005
Footstep, right side	WL71009
Decals, English & Spanish	WL83001
Cover plates, rear frame	WL86013
Lifetime Frame Warranty	WL86041
CareTrack, GSM/Satellite capable	WL88018
CareTrack 4 yr subscription	WL88010
98" 3.0 yd3 HD GP Bucket, Pin On	WLA86411
98" 3pc Bolt-on edge kit, STE only	WLA80134

Volvo Construction Equipment  
Building Tomorrow



# L60H, L70H, L90H<sub>2.0</sub>

Volvo Wheel Loaders 11.0-17.3 t / 24,250-38,140 lb 165-184 hp







# WELCOME TO OUR WORLD

Welcome to a world of industry leading machinery. A world where imagination, hard work and technological innovation will lead the way towards developing a future which is cleaner, smarter, and more connected. A world supported by the enduring values of the Volvo Group. A world of stability, sustainability and innovation. A world which we put our customers at the heart of.

Welcome to the world of Volvo Construction Equipment – we think you're going to like it here.

## Working harder, working smarter

For over 180 years Volvo has been a pioneer in the design and manufacture of machines which set the standard for efficiency, performance and uptime. Across our range of excavators, wheel loaders and haulers, our reputation for engineering excellence is unrivalled, which means whatever your operation or application, we can provide a total fleet solution to help you succeed.

Building on our proud history, the Volvo Concept Lab continues to create cutting-edge ideas and innovative concepts, to ensure we offer customers machines which work harder and smarter long into the future.





## Solutions for you

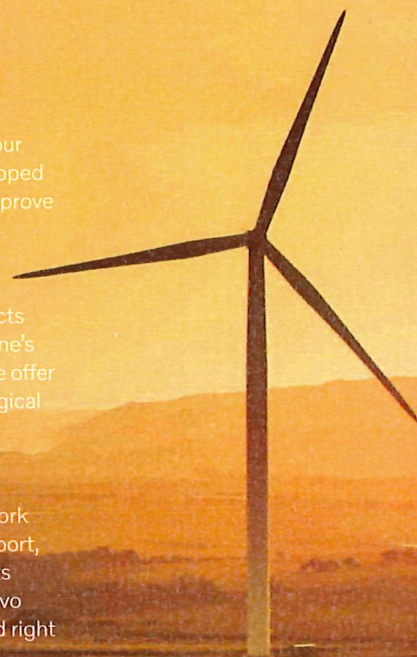
Our industry leading machines are just the start of your relationship with Volvo. As your partner, we have developed an extensive range of additional solutions to help you improve uptime, boost productivity and reduce costs.

### Designed for your business

Structured across nine blocks, our portfolio of products and services are designed to complement your machine's performance and boost your profitability. Simply put, we offer some of the best guarantees, warranties and technological solutions in the industry today.

### There when you need us

Whether you're buying new or used, our global network of dealers and technicians offer around-the-clock support, including machine monitoring and world-class parts availability. It's the basis of everything offered by Volvo Services, so you can be confident we've got you covered right from the start.



**BUILDING TOMORROW**



# Multitude of talents

Say hello to the latest additions to the H-Series wheel loaders: the upgraded L60H, L70H and L90H. Built on the established H-Series design, the next-generation machines are the ultimate all-arounders, offering the high quality performance you'd expect from a Volvo wheel loader, plus a host of features that promote greater versatility and stability to handle your workload.

## Designed to do more

Knock heavy-duty jobs down to size with the H-Series wheel loaders. These robust workhorses offer unshakable stability thanks to the new, optimized loading unit weight and redesigned counterweight. Designed to do more, the well-balanced machines yield up to 3% higher tipping load, so you can tackle a variety of tasks – no matter how demanding.



## Adapt to any application

Get the most out of your machine with a range of purpose-built attachments, including grapples, sweepers, material handling arms, snow plows and more. Because different jobs require different attachments, we can custom build a Volvo attachment to match your specific needs. To unlock the use of multiple attachments, simply engage the third and fourth hydraulic functions.



## Fully loaded

Whatever the job, we have the tools to get it done. Volvo offers a full range of Volvo buckets, including general purpose, grading, refuse, light material, and more, to handle everything, from light material to heavy rocks. Built on decades of engineering excellence, Volvo buckets are optimized for Volvo wheel loaders and durably designed for all types of materials and tasks.



## Made to match

Lift your machine's versatility to the next level with pallet forks, offering high visibility and the advantage of TP linkage and parallel movement. Ideal for pallet and material handling, Volvo forks are heavy-duty in design, allowing the wheel loader to move effortlessly around different work sites, such as yards, warehouses and harbors.





# LOADED WITH VERSATILITY

Take on any application with the H-Series wheel loaders, equipped with the Torque Parallel (TP) linkage for ultimate versatility. Not only does the TP linkage offer high breakout, tilt in and lifting forces, it keeps the attachments parallel throughout the lifting range for exceptional load stability and easy bucket filling. Change tools in a matter of seconds with the Volvo attachment bracket.



## ***L90H: tried and trusted***

*"You need height with your loader bucket to drop material and fluff so it moves smoother through the conveyors. This Volvo loader increases our ability to take in more market share and make our operation sustainable in terms of revenue."*

***Jason Yorks, Resource Recovery Manager and Recycling Coordinator, Lycoming County Resource Management Services, Pennsylvania (USA)***



# UP TO 20% MORE EFFICIENT

Achieve up to 20% greater fuel efficiency thanks to advanced features, such as Eco pedal and the new optional lock-up\* function. The lock-up feature eliminates losses in the torque converter by creating a direct drive between the engine and transmission, which work in harmony with the axles. To improve cycle times and fuel use, customize the lock-up engagement of your machine. (\*with gear selection engagement, ranging from gears 2-4, 3-4, 4)

*Lock-up is not available on L60H*





# Drive down your costs

Get the most out of your investment with a cost-effective solution. At Volvo, we're committed to driving your operating costs down. That's why we've refined the mid-sized H-Series wheel loaders to deliver up to 20% greater fuel efficiency and optimize productivity.

## Productivity up, fuel down

Cut operating costs and propel your machine's productivity with rimpull control. With the power to control the rimpull, the operator can reduce tire wear and prevent wheel spin for effective bucket filling. Select the optimum rimpull to match the application and ground conditions, and experience high productivity at low costs.

## Work smarter

For the best use of engine power in all applications, rely on Smart Control, designed to optimize fuel efficiency and performance. Standard on the mid-sized H-Series wheel loaders, Smart Control ensures the correct torque in all situations for perfect harmony between the engine and hydraulics.

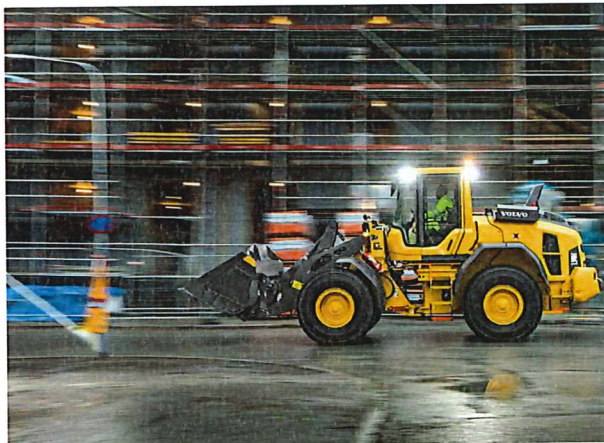


## Do more on and off road

Do more on and off road with an increased top speed of 50km/h (31 mph). Not only is the machine faster, it is also a pleasure to operate thanks to the optional lock-up feature, which improves drive response and incline performance.

## Boost your profitability

Ensure a low total cost of ownership with a host of Productivity Services and Fuel Efficiency Services. From reports, training packages and consultancy solutions, Volvo has you covered – just speak to your dealer for more information.



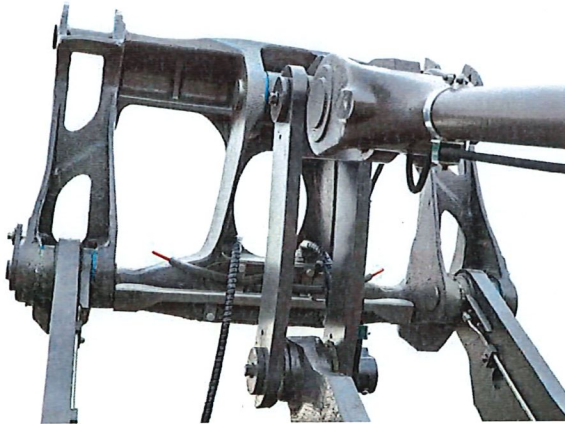


# Comfortably in control

It's not just the machine that's ready for any challenge. From the comfort and security of the spacious Volvo cab, the operator is primed for a productive work shift.

## Safety as standard

Safe from the inside out, the latest loaders feature anti-slip steps and strategically placed handrails for ease of access, plus an array of seatbelt options, such as the orange three-point seatbelt. The attachment bracket uses a new visual indicator to let you know the attachment is locked and ready to use.



## Take command

Customize your Volvo and take command of hydraulic functions with electro servo controls\*. From the cab, adjust the detent third function, boom kick-out, return to dig and bucket leveling. Easily change between linear or single lever controls and select from three hydraulic settings to tailor the lever control according to your preferences.

*\*Not available on L60H*



## See more, do more

Experience a clear view of the attachment and jobsite thanks to large expanses of glass, redesigned side mirrors, rear-view camera, as well as optional front camera and radar detect system. The machines also feature orange handrails and steps to stand out against the jobsite, and LED lights, available in various packages.



## Bucket leveling function

Take your productivity to the next level with the bucket leveling function. The new function enhances operator performance by automatically returning the bucket from both dump and carry positions.

*Not available on L60H*





# NO COMPROMISE ON COMFORT

Hard work has never felt so easy from the spacious of the Volvo cab, featuring your choice of comfortable operator seat, as well as ergonomic controls. Perform basic configurations using the Contronic key pad panel, and keep an eye on the operation with the information display.



## *L90H: tried and trusted*

*"As far as I am concerned Volvo has cornered the market on operator comfort. They do everything they can to make it comfortable for the operator working eight hours day or longer. The heated seats are a real bonus. And with the high tip bucket I can drive on the flat floor and still reach the metering bin."*  
**Ron Snell, loader operator, Lycoming County Resource Management Services, Pennsylvania (USA)**



# OPERATOR COACHING

As machines become more advanced, and with smarter technology, the Operator Coaching app helps to ensure operators are using their Volvo machine to its full potential. The intuitive app provides real-time guidance to operators, helping them understand how their actions influence machine productivity and efficiency, as well as identify areas for improvement or changes in their technique.



## *Operator Coaching app: put to the test*

*"I find it really useful. The system will tell me when to activate the Boom Suspension System, when to activate Lock-Up and flag up any changes I need to make to my operating style, like not riding the brakes and the throttle at the same time."*

*Operator from USA*



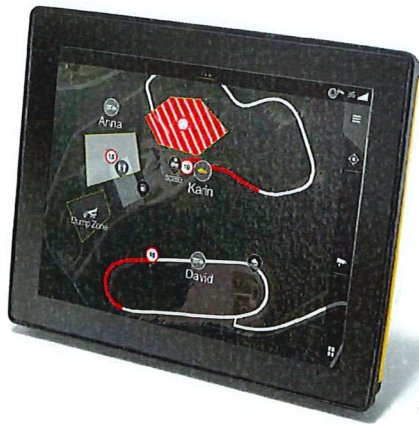
# Load Assist

Optimize your load cycles with Load Assist, powered by Volvo Co-Pilot – the revolutionary in-cab display. Gain access to a set of smart apps\* and boost the efficiency of your operation.

\*The On-Board Weighing app is not available on L60H, L70H and L90H.

## Map

Get accurate machine positioning with Map, a clever app that allows operators to monitor on-site traffic in real-time. Not only does this give operators an improved orientation of the site they are working on, but it allows them to proactively adjust their driving behavior according to traffic conditions.



## Integrated rear-view

Operators benefit from a full view of their surroundings when reversing, thanks to the rear-view camera and optional radar detect system which are now integrated into the Volvo Co-Pilot display.



## Calculator

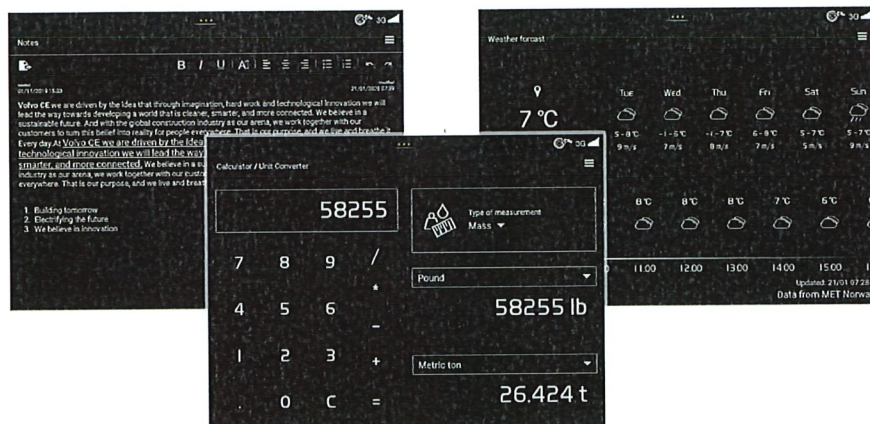
Complete basic calculation and use the Calculator app to quickly and easily convert six unit types (length, mass, angle, time, temperature and speed).

## Notes

There's no need for a pad and pen with the Notes app. The digital notepad can be used to write and save notes while in the cab.

## Weather

Stay on top of the weather with the easy-to-view Weather app, helping you stay informed of current and upcoming weather conditions.





# Ultimate all-rounder

## Designed to do more

- Optimized loading unit weight, heavy-duty counterweight for greater stability
- Higher tipping load: 1.7% for L60H, 1.6% for L70H, 3.4% for L90H
- L90H: increased lifting height by 75 mm (3 in)
- Electro-servo controls (L70H, L90H)
- Bucket leveling function
- Choice of three hydraulic response modes: active, normal, soft.

## LOADED WITH VERSATILITY

- Torque Parallel linkage
- Volvo attachment bracket
- Range of purpose-built attachments
- Optional custom-built attachment
- 3rd and 4th hydraulic functions



## Volvo Services

- Load Assist, powered by Volvo Co-Pilot
- Operator training
- ActiveCare Direct
- Genuine Volvo Parts

## KEEP IT MOVING

- 1000hr engine oil change interval
- Quick hydraulic oil fill thanks to new mounted nipple
- 50% larger hydraulic oil cooler
- Lifetime Frame and Structure Warranty
- Delayed engine shutdown
- Optional external axle cooling (L70H, L90H)





#### Greater access

- Cooler installation slides out for easier cleaning
- Repositioned fill spouts for transmission and engine oil
- Ground-level access to service points
- Electronically-operated engine hood

#### Safety as standard

- Anti-slip steps and strategically placed handrails
- Orange three-point seatbelt
- Redesigned side mirrors
- Rear-view camera
- Optional radar detect system
- Optional external seatbelt indicator light

#### UP TO 20% MORE EFFICIENT

- Optional lock-up converter with gear selection (L70H, L90H)
- Increased top speed of 50km/h (31 mph) with lock-up feature
- Rimpull control
- Smart Control
- Smooth Control
- Eco pedal

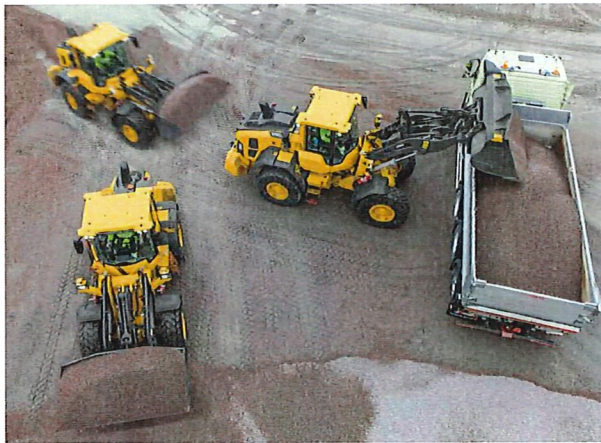


# Keep your machine moving

The latest generation Volvo L60H, L70H and L90H wheel loaders extends their already legendary status by offering an upgraded portfolio of uptime-enhancing features. From simplified serviceability to proactive dealer support, you have access to everything you need to keep your machine up and moving.

## Keep it cool

Count on Volvo to keep up. The improved hydraulic cooling capacity regulates the component temperature, for greater machine utilization when using attachments that are demanding on the hydraulics, and longer hydraulic component life. This, plus the external axle cooling option – ideal for tough applications – doubles the axle oil change intervals for higher uptime and lower maintenance costs.



## Greater access

To keep uptime high, the H-Series wheel loaders are equipped with an engine cover that opens electronically, allowing ground-level access to the service points, including the radiator. For swift and easy cleaning, the new cooler installation now slides out. Safely fill the transmission and engine oil thanks to newly repositioned fill spouts, and get back to work without delay.



## Delayed engine shutdown

Reduce the wear on your engine with the new delayed engine shutdown feature. The function shuts off the machine when the turbo has cooled down to the ideal temperature. Not only does the feature reduce component wear, it can also be scheduled by the operator to activate automatically for added convenience.



## Here to support you

Maintain productivity with our range of Genuine Volvo Parts – all backed by Volvo warranty – with 24-hour parts delivery guaranteed. Maximize machine uptime and reduce repair costs with ActiveCare Direct. The intelligent service from Volvo provides around the clock machine monitoring, as well as customer reports, which suggests ways to optimize efficient machine use and help you take preventative maintenance actions.





# DURABLE BY DESIGN

Built by Volvo, for Volvo, you can count on the proven design of the latest wheel loaders to meet the demands of tough job sites. Renowned for their reliability, the next-generation H-Series wheel loaders offer a Lifetime Frame and Structure Warranty, including the front frame, rear frame, articulation joint and loader arms.





# Volvo L60H, L70H, L90H in detail

## Engine

6-cylinder, 6 liters inline turbocharged diesel engine with an advanced fuel injection system with the common rail. Fuel is distributed under high pressure from a high-pressure accumulator, the rail. One belt driven high pressure pump deliver the fuel to the rail and then further on via high-pressure pipes to the electronically operated fuel injectors. Engine meets Tier 4f / Stage IV emission legislation.

### L60H

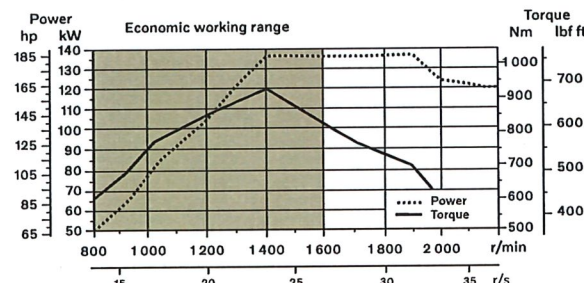
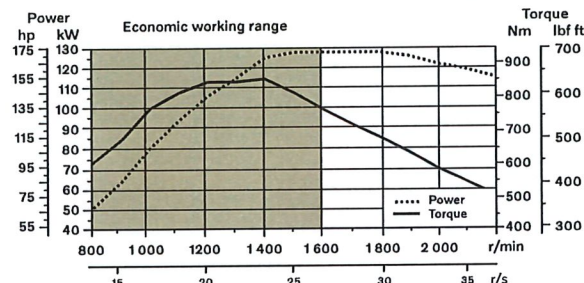
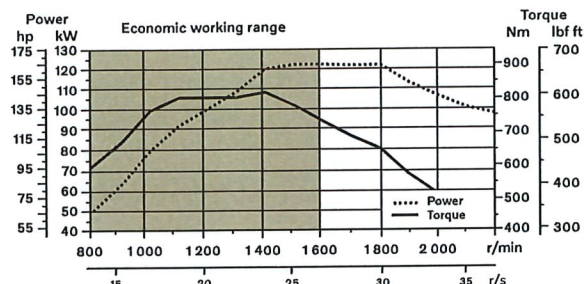
Engine	Volvo	D6J
Max. power at	r/min (r/s)	1,500 - 1,800 (25 - 30)
SAE J1995 gross	kW (hp)	122 (164)
ISO 9249, SAE J1349 net	kW (hp)	122 (164)
Max. torque at	r/min (r/s)	1,400 (23)
SAE J1995 gross	Nm (ft lbf)	820 (605)
ISO 9249, SAE J1349 net	Nm (ft lbf)	820 (605)
Economic working range	r/min (r/s)	800 - 1,600 (13.3 - 26.7)
Displacement	l (in <sup>3</sup> )	5.7 (348)

### L70H

Engine	Volvo	D6J
Max. power at	r/min (r/s)	1,500 - 1,800 (23.3 - 28.3)
SAE J1995 gross	kW (hp)	127 (170)
ISO 9249, SAE J1349 net	kW (hp)	127 (170)
Max. torque at	r/min (r/s)	1,400 (23.3)
SAE J1995 gross	Nm (ft lbf)	853 (629)
ISO 9249, SAE J1349 net	Nm (ft lbf)	853 (629)
Economic working range	r/min (r/s)	800 - 1,600 (13.3 - 26.8)
Displacement	l (in <sup>3</sup> )	5.7 (348)

### L90H

Engine	Volvo	D6J
Max. power at	r/min (r/s)	1,400 - 1,900 (23.3 - 31.7)
SAE J1995 gross	kW (hp)	137 (184)
ISO 9249, SAE J1349 net	kW (hp)	137 (184)
Max. torque at	r/min (r/s)	1,400 (23.3)
SAE J1995 gross	Nm (ft lbf)	934 (689)
ISO 9249, SAE J1349 net	Nm (ft lbf)	934 (689)
Economic working range	r/min (r/s)	800 - 1,600 (13.3 - 26.7)
Displacement	l (in <sup>3</sup> )	5.7 (348)





**Drivetrain**

Torque converter: Single-stage  
 Transmission: Volvo countershaft transmission with single lever control. Fast and smooth shifting of gears with Pulse Width Modulation (PWM) valve.  
 Transmission: Volvo Automatic Power Shift (APS) gear shifting system with fully automatic shifting 1-4 and mode selector with 4 different gear shifting programs, including AUTO mode. Also equipped with Rimpull control to avoid wheel spin and optimize bucket filling.  
 Axles: Volvo fully floating axle shafts with planetary hub reductions and cast steel axle housing. Fixed front axle and oscillating rear axle. 100% differential lock on the front axle.

**L60H**

Transmission	Volvo	HTE 125C
Torque multiplication, stall ratio		2.5:1
Maximum speed		
1st gear	km/h (mi/h)	Converter 7.5 (Converter 4.6)
2nd gear	km/h (mi/h)	Converter 15 (Converter 9.3)
3rd gear	km/h (mi/h)	Converter 28 (Converter 17.4)
4th gear	km/h (mi/h)	Converter 46 (Converter 28.5)
4th gear: Shown in speedometer and limited by ECU		
Measured with tires		20.5R25
Front axle/rear axle		AWB 15/AWB 15
Rear axle oscillation	± °	13
Ground clearance	mm (in)	470 (18.5)
at oscillation	°	13

**L70H**

Transmission	Volvo	HTE 125C Non Lock-up / HTE 125 Lock-up
Torque multiplication, stall ratio		2.5:1 Non Lock-up / 2.59:1 Lock-up
Maximum speed		
1st gear	km/h (mi/h)	Converter 7.5 / Lock-up 7.5 (Converter 4.6 / Lock-up 4.6)
2nd gear	km/h (mi/h)	Converter 15 / Lock-up 15 (Converter 9.3 / Lock-up 9.3)
3rd gear	km/h (mi/h)	Converter 29 / Lock-up 30 (Converter 17.4 / Lock-up 18.0)
4th gear	km/h (mi/h)	Converter 46 / Lock-up 50 (Converter 28.5 / Lock-up 31.1)
4th gear: Shown in speedometer and limited by ECU		
Measured with tires		20.5R25
Front axle/rear axle		AWB 25/AWB 20
Rear axle oscillation	± °	13
Ground clearance	mm (in)	470 (18.5)
at oscillation	°	13

**L90H**

Transmission	Volvo	HTE 125C Non Lock-up / HTE 125 Lock-up
Torque multiplication, stall ratio		2.5:1 Non Lock-up / 2.59:1 Lock-up
Maximum speed		
1st gear	km/h (mi/h)	Converter 6.5 / Lock-up 6.5 (Converter 4.0 / Lock-up 4.0)
2nd gear	km/h (mi/h)	Converter 14 / Lock-up 14 (Converter 8.6 / Lock-up 8.6)
3rd gear	km/h (mi/h)	Converter 26 / Lock-up 27 (Converter 16.2 / Lock-up 16.8)
4th gear	km/h (mi/h)	Converter 46 / Lock-up 50 (Converter 28.5 / Lock-up 31.1)
4th gear: Shown in speedometer and limited by ECU		
Measured with tires		20.5R25
Front axle/rear axle		AWB 25/AWB 20
Rear axle oscillation	± °	13
Ground clearance	mm (in)	470 (18.5)
at oscillation	°	13

**Electrical system**

Contronic electrical system with central warning light and buzzer for following functions: - Serious engine fault, Low steering system pressure, Over speed warning engine, Interruption in communication (computer fault), Central warning light and buzzer with the gear engaged for the following functions: Low engine oil pressure, High engine oil temperature, High charge air temperature, Low coolant level, High coolant temperature, High crank case pressure, Low transmission oil pressure, High transmission oil temperature, Low brake pressure, Engaged parking brake, Fault on brake charging, Low hydraulic oil level, High hydraulic oil temperature, Overspeeding in engaged gear, High brake cooling oil temperature front and rear axles, etc.

		L60H	L70H	L90H
Batteries	V	2 x 12	2 x 12	2 x 12
Battery capacity	Ah	2 x 110	2 x 110	2 x 110
Cold cranking capacity, approx	A	1,000	1,000	1,000
Alternator rating	W/A	3 135/80	3 135/80	3 135/80
Starter motor output	kW	5.5	5.5	5.5

**Brake system**

Service brake: Volvo dual-circuit system with outboard mounted, hydraulically operated, fully sealed and circulating oil cooled wet disc brakes. Four operator selectable transmission disengagement settings while braking.  
 Parking brake: Dry disc brake mounted on the transmission output shaft. Applied by spring force, electro-hydraulically released with a switch on the instrument panel.  
 Secondary brake: Dual brake circuits with rechargeable accumulators. Standard: The brake system complies with the requirements of ISO 3450, 71/320/EEC

		L60H	L70H	L90H
Number of brake discs per wheel		1	1	1
Accumulators	l (gal)	3 x 0.5 (3 x 0.13)	2 x 0.5+1 x 1.0 (2 x 0.13 + 1 x 0.26)	2 x 0.5+1 x 1.0 (2 x 0.13 + 1 x 0.26)
Accumulators for parking brake	l (gal)	1 x 0.5 (1 x 0.13)	1 x 1.0 (1 x 0.26)	1 x 1.0 (1 x 0.26)



# Volvo L60H, L70H, L90H in detail

## Cab

Instrumentation: All important information is centrally located in the operator's field of vision. Display for Contronic monitoring system. Heater and defroster: Heater coil with filtered fresh air and fan with auto and 11 manual speed settings. Defroster vents for all window areas. Operator's seat: Operator's seat with adjustable air suspension and retractable seatbelt. The seat is mounted on a bracket on the rear cab wall and floor. The forces from the retractable seatbelt are absorbed by the seat rails. Standards: The cab is tested and approved according to ROPS (ISO 3471), FOPS (ISO 3449). The cab meets with requirements according to ISO 6055 (Operator overhead protection - Industrial trucks) and SAE J386 (Operator Restraint System).

		L60H	L70H	L90H
Emergency exit: Use emergency hammer to break window				
Ventilation	m <sup>3</sup> /min (yd <sup>3</sup> /min)	9 (11.8)	9 (11.8)	9 (11.8)
Heating capacity	kW	16	16	16

## Sound Level

		L60H	L70H	L90H
Sound pressure level in cab according to ISO 6396				
LpA	dB	68	68	68
External sound level according to ISO 6395 and EU Noise Directive 2000/14/EC				
LWA	dB	104	105	105

## Lift Arm System

Torque parallel linkage (TP-linkage) with high breakout torque and parallel lift-arm action.

		L60H	L70H	L90H
Lift cylinders		2	2	2
Cylinder bore	mm (in)	110 (4.3)	110 (4.3)	120 (4.7)
Piston rod diameter	mm (in)	70 (2.8)	70 (2.8)	70 (2.8)
Stroke	mm (in)	665 (26.2)	756 (29.8)	744 (28.9)
Tilt cylinder		1	1	1
Cylinder bore	mm (in)	150 (5.9)	160 (6.3)	180 (7.1)
Piston rod diameter	mm (in)	80 (3.1)	90 (3.5)	90 (3.5)
Stroke	mm (in)	444 (17.5)	432 (17)	430 (16.9)

## Steering System

System supply: The steering system has priority feed from a load-sensing axial piston pump with variable displacement. Steering cylinders: Two double-acting cylinders.

		L60H	L70H	L90H
Steering cylinders		2	2	2
Cylinder bore	mm (in)	70 (2.8)	70 (2.8)	80 (3.1)
Rod diameter	mm (in)	45 (1.8)	45 (1.8)	50 (2)
Stroke	mm (in)	386 (15.2)	386 (15.2)	345 (13.6)
Working pressure	MPa (bar)	21 (210)	21 (210)	21 (210)
Maximum flow	l/min (gal/min)	60 (15.9)	60 (15.9)	60 (15.9)
Maximum articulation	± °	40	40	40

## Hydraulic system

Closed center load sensing hydraulic system with non pressurised hydraulic tank and pilot operated control valves. System supply: Variable displacement axial piston pump supply the hydraulic system. Valves: The central valve distributes pressure and flow out to the cooling fan, steering, brake, pilot and hydraulic system. Steering system gets priority over others. Lift function: The valve has four positions; raise, hold, lower and float position. Automatic boom kickout position can be set to any position between maximum reach and full lifting height. Tilt function: The valve has three functions; rollback, hold and dump. Automatic tilt out/tilt in can be adjusted to the desired bucket angle. Cylinders: Double-acting cylinders for all functions. Filter: Full flow filtration through 10 micron (absolute) filter cartridge.

		L60H	L70H	L90H
Working pressure maximum, pump 2 for steering-, brake-, pilot- and working hydraulic system	MPa (bar)	26 (260)	26 (260)	31 (310)
Flow	l/min (gal/min)	145 (38.3)	154 (40.7)	171 (45.2)
at	MPa (bar)	10 (100)	10 (100)	10 (100)
engine speed	r/min (r/s)	1,900 (31.7)	1,900 (31.7)	1,900 (31.7)
Working pressure maximum, pump 3 for brake- and cooling fan system	MPa (bar)	21 (210)	21 (210)	21 (210)
Flow	l/min (gal/min)	33 (8.7)	33 (8.7)	33 (8.7)
at	MPa (bar)	10 (100)	10 (100)	10 (100)
engine speed	r/min (r/s)	1,900 (31.7)	1,900 (31.7)	1,900 (31.7)
Pilot system, working pressure	MPa (bar)	3.5 (35)	3.5 (35)	3.5 (35)
Cycle times				
Lift	s	5.4	5.5	5.7
Tilt	s	1.9	2.1	2.3
Lower, empty	s	2.7	2.9	4
Total cycle time	s	10	10.5	12

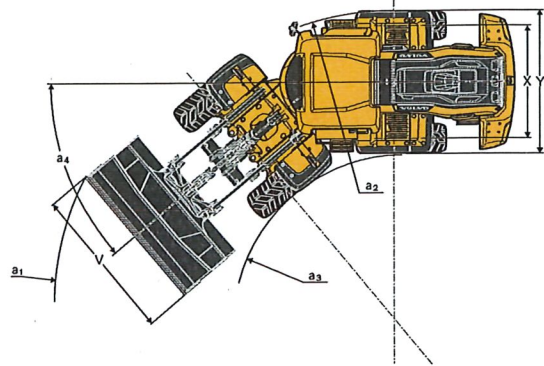
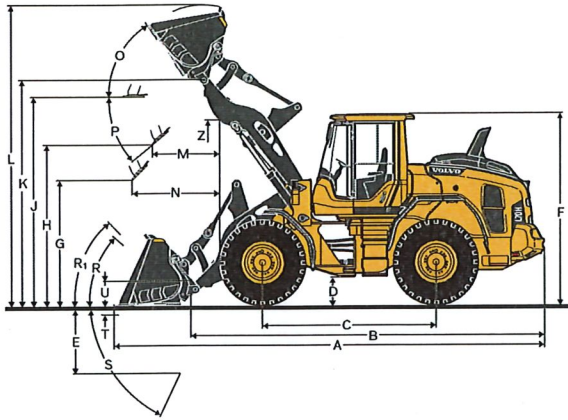
## Service Refill

Service accessibility: Large, electrically operated easy-to-open hood covering whole engine compartment. Fluid filters and component breather air filters are located from ground level access and promote long service intervals. Machine contronics have possibility to monitor, log and analyze data to facilitate troubleshooting. A quick-fit adapter on the hydraulic tank provides faster hydraulic oil fill.

		L60H	L70H	L90H
Fuel tank	l (gal)	222 (58.6)	222 (58.6)	222 (58.6)
DEF/AdBlue® tank	l (gal)	20 (5.3)	20 (5.3)	20 (5.3)
Engine coolant	l (gal)	30 (7.9)	30 (7.9)	30 (7.9)
Hydraulic oil tank	l (gal)	90 (23.8)	90 (23.8)	90 (23.8)
Transmission oil (non lock-up)	l (gal)	21 (5.5)	21 (5.5)	21 (5.5)
Transmission oil (lock-up)	l (gal)	22 (5.8)	22 (5.8)	22 (5.8)
Engine oil	l (gal)	20 (5.2)	20 (5.2)	20 (5.2)
Axle oil front	l (gal)	25 (6.6)	35 (9.2)	35 (9.2)
Axle oil rear	l (gal)	25 (6.6)	27 (7.1)	27 (7.1)



# Specifications



## Tires 20.5 R25 L3

			L60H	L70H		L90H		L60H		L70H		L90H		
			Standard boom						Long boom					
B	mm	ft in	6,010	19'9"	6,080	19'11"	6,170	20'3"	6,520	21'5"	6,560	21'6"	6,600	21'8"
C	mm	ft in	3,000	9'10"	3,000	9'10"	3,050	10'0"	3,000	9'10"	3,000	9'10"	3,050	10'0"
D	mm	ft in	440	1'5"	450	1'6"	450	1'6"	430	1'5"	450	1'6"	440	1'5"
F	mm	ft in	3,270	10'9"	3,280	10'9"	3,280	10'9"	3,270	10'9"	3,280	10'9"	3,280	10'9"
G	mm	ft in	2,133	7'0"	2,134	7'0"	2,132	7'0"	2,134	7'0"	2,134	7'0"	2,132	7'0"
J	mm	ft in	3,550	11'8"	3,580	11'9"	3,730	12'3"	4,080	13'5"	4,050	13'3"	4,140	13'7"
K	mm	ft in	3,870	12'8"	3,870	12'8"	4,040	13'3"	4,380	14'4"	4,350	14'3"	4,460	14'8"
O	°		56		56		57		56		52		58	
Pmax	°		45		46		45		42		45		44	
R	°		43		43		44		45		44		47	
R1*	°		46		48		49		50		49		53	
S	°		79		68		67		79		73		65	
T	mm	ft in	123	0'5"	106	0'4"	112	0'4"	150	0'6"	112	0'4"	123	0'5"
U	mm	ft in	410	1'4"	450	1'6"	480	1'7"	590	1'11"	500	1'8"	570	1'10"
X	mm	ft in	1,900	6'3"	1,930	6'4"	1,960	6'5"	1,900	6'3"	1,930	6'4"	1,960	6'5"
Y	mm	ft in	2,430	7'12"	2,460	8'1"	2,490	8'2"	2,430	7'12"	2,460	8'1"	2,490	8'2"
Z	mm	ft in	3,210	10'6"	3,160	10'4"	3,460	11'4"	3,590	11'9"	3,500	11'6"	3,910	12'10"
a2	mm	ft in	5,340	17'6"	5,350	17'7"	5,430	17'10"	5,340	17'6"	5,350	17'7"	5,430	17'10"
a3	mm	ft in	2,900	9'6"	2,890	9'6"	2,940	9'8"	2,900	9'6"	2,890	9'6"	2,940	9'8"
a4	±°		40		40		40		40		40		40	

\* Carry position SAE

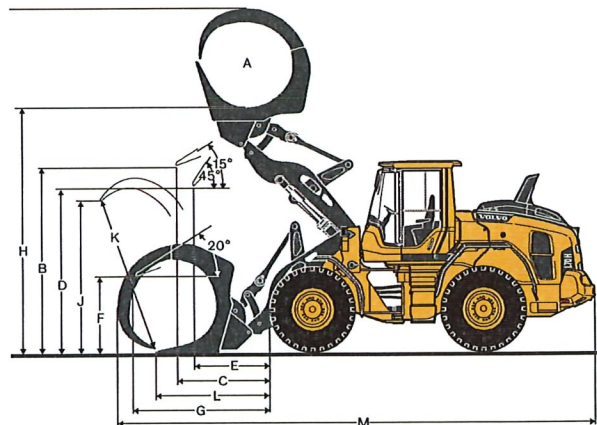
Calculated with additional protective guarding

Where applicable, specifications and dimensions are according to ISO 7131, SAE J732, ISO 7546, SAE J742, ISO 14397, SAE J818

## Tires: 20.5R25 L3

			L60H		L70H		L90H	
SAE-Load	kg	lb	3,450	7,606	3,990	8,796	4,600	10,141
Operating weight without load*	kg	lb	12,883	28,402	14,585	32,154	16,645	36,696
Grapple sales code			WLA82194		WLA80153		WLA80832	
A	m <sup>2</sup>	yd <sup>2</sup>	1.3	1.6	1.5	1.8	2.4	2.9
B	mm	ft in	3,412	11'2"	3,380	11'1"	3,487	11'5"
C	mm	ft in	1,483	4'10"	1,594	5'3"	1,703	5'7"
D	mm	ft in	2,929	9'7"	2,870	9'5"	2,865	9'5"
E	mm	ft in	1,175	3'10"	1,265	4'2"	1,319	4'4"
F	mm	ft in	1,532	5'0"	1,502	4'11"	1,441	4'9"
G	mm	ft in	2,350	7'9"	2,442	8'0"	2,740	8'12"
H	mm	ft in	4,333	14'3"	4,378	14'4"	4,613	15'2"
I	mm	ft in	5,878	19'3"	6,027	19'9"	6,664	21'10"
J	mm	ft in	1,997	6'7"	2,141	7'0"	2,786	9'2"
K	mm	ft in	2,080	6'10"	2,365	7'9"	2,990	9'10"
L	mm	ft in	1,709	5'7"	1,800	5'11"	2,131	6'12"
M	mm	ft in	7,861	25'9"	7,996	26'3"	8,469	27'9"

\* Calculated with additional protective guarding





# Specifications

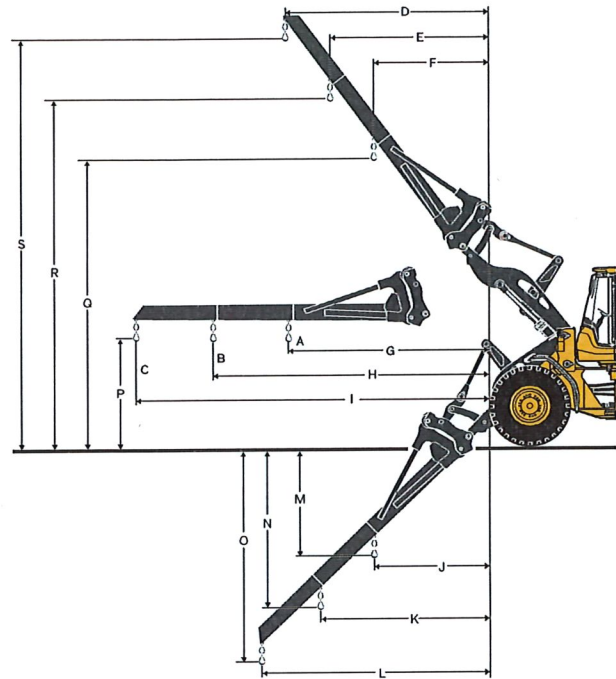
## Tires: 20.5R25 L3

			L60H		L70H		L90H	
Material handling arm sales code			92007		92007		92008	
A*	kg	lb	1,800	3,968	2,150	4,740	2,760	6,085
B*	kg	lb	1,400	3,086	1,710	3,770	2,130	4,696
C*	kg	lb	1,150	2,535	1,400	3,086	1,740	3,836
Static tipping load, straight	kg	lb	3,238	7,139	3,583	7,899	4,289	9,456
35deg. Turn at full turn	kg	lb	2,910	6,415	3,222	7,103	3,834	8,453
D	mm	ft in	2,592	8'6"	2,716	8'11"	2,486	8'2"
E	mm	ft in	2,002	6'7"	2,106	6'11"	1,894	6'3"
F	mm	ft in	1,465	4'10"	1,549	5'1"	1,301	4'3"
G	mm	ft in	3,270	10'9"	3,323	10'11"	3,253	10'8"
H	mm	ft in	4,305	14'1"	4,358	14'4"	4,387	14'5"
I	mm	ft in	5,439	17'10"	5,492	18'0"	5,520	18'1"
J	mm	ft in	905	2'12"	1,269	4'2"	1,339	4'5"
K	mm	ft in	1,227	4'0"	1,744	5'9"	1,889	6'2"
L	mm	ft in	1,580	5'2"	2,266	7'5"	2,439	8'0"
M	mm	ft in	2,258	7'5"	2,176	7'2"	2,051	6'9"
N	mm	ft in	3,241	10'8"	3,095	10'2"	3,043	9'12"
O	mm	ft in	4,319	14'2"	4,102	13'5"	4,034	13'3"
P	mm	ft in	1,512	5'0"	1,523	5'0"	1,520	5'0"
Q	mm	ft in	5,286	17'4"	5,302	17'5"	5,403	17'9"
R	mm	ft in	6,171	20'3"	6,174	20'3"	6,370	20'11"
S	mm	ft in	7,139	23'5"	7,129	23'5"	7,336	24'1"

Operating weight kg lb 11,885 26,202 13,451 29,654 14,833 32,701  
without load

\* Op. load at full turn + tipping position  
Tipping loads calculated for max. arm length

\*\*Calculated with additional protective guarding

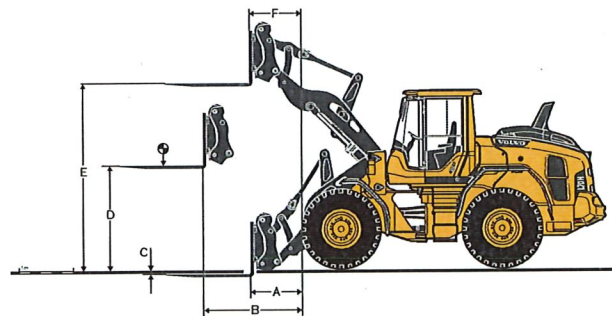


## Tires: 20.5R25 L3

			L60H		L70H		L90H	
Fork frame sales code			83768		83768		83770	
Fork tines sales code (R/L)			80042/80043		80042/80044		80106/80107	
Static tipping load, straight	kg	lb	6,930	15,278	7,576	16,702	8,904	19,630
35deg. Turn at full turn	kg	lb	6,230	13,735	6,809	15,011	7,947	17,520
at load center distance*	mm	ft in	600	2'0"	600	2'0"	600	2'0"
A	mm	ft in	798	2'7"	841	2'9"	932	3'1"
B	mm	ft in	1,567	5'2"	1,616	5'4"	1,679	5'6"
C	mm	ft in	-38	-1'11"	-52	-1'10"	-4	-1'12"
D	mm	ft in	1,831	6'0"	1,859	6'1"	1,800	5'11"
E	mm	ft in	3,713	12'2"	3,736	12'3"	3,841	12'7"
F	mm	ft in	700	2'4"	767	2'6"	641	2'1"
Operating weight without load	kg	lb	11,965	26,378	13,531	29,831	14,928	32,911

\* Firm and level ground

\*\*Calculated with additional protective guarding





# Volvo L60H specifications

L60H* MICH 20.5R25 XHA2 L3		General purpose										Grading		Light material				LongBoom**	
		WLA86398	WLA86423	WLA86401	WLA86405	WLA86410	WLA86411	WLA92476	WLA92564	WLA92565	WLA86410			WLA92476	WLA92564	WLA92565	WLA86410		
		1.9 m³ (2.5 yd³) HD STE H BOE	2.0 m³ (2.6 yd³) STE H T	2.1 m³ (2.7 yd³) HD STE H BOE	2.3 m³ (3.0 yd³) HD STE H BOE	2.1 m³ (2.7 yd³) HD STE P BOE	2.3 m³ (3.0 yd³) HD STE P BOE	1.7 m³ (2.2 yd³) GRB H BOE	3.1 m³ (4.1 yd³) LM H BOE	5 m³ (6.5 yd³) LM H BOE	2.1 m³ (2.7 yd³) HD STE P BOE			1.7 m³ (2.2 yd³) GRB H BOE	3.1 m³ (4.1 yd³) LM H BOE	5 m³ (6.5 yd³) LM H BOE	2.1 m³ (2.7 yd³) HD STE P BOE		
Volume, heaped ISO/SAE	m³ yd³	19 2.5	20 2.6	21 2.7	23 3.0	21 2.7	23 3.0	17 2.2	31 4.1	50 6.5	21 2.7			17 2.2	31 4.1	50 6.5	21 2.7		
Volume at 110% fill factor	m³ yd³	2.0 2.7	2.2 2.9	2.3 3.0	2.5 3.3	2.3 3.0	2.5 3.3	1.9 2.4	3.4 4.5	5.5 7.2	2.3 3.0			1.9 2.4	3.4 4.5	5.5 7.2	2.3 3.0		
Static tipping load, straight	kg lb	8,940 19,710	9,028 19,910	8,831 19,470	8,770 19,330	9,310 20,520	9,230 20,340	7,740 17,060	8,450 18,640	8,450 18,640	-1,640 -3,600			7,740 17,060	8,450 18,640	8,450 18,640	-1,640 -3,600		
at 35° turn	kg lb	7,996 17,630	8,079 17,810	7,887 17,390	7,830 17,260	8,340 18,400	8,270 18,230	6,920 15,260	7,540 16,630	7,510 16,570	-1,500 -3,320			6,920 15,260	7,540 16,630	7,510 16,570	-1,500 -3,320		
at full turn	kg lb	7,718 17,020	7,800 17,200	7,609 16,780	7,550 16,650	8,060 17,770	7,990 17,610	6,680 14,730	7,280 16,040	7,240 15,960	-1,470 -3,230			6,680 14,730	7,280 16,040	7,240 15,960	-1,470 -3,230		
Breakout force	kN lbf	81.8 18,400	82.8 18,610	80.4 18,090	75.0 16,870	84.8 19,060	80.9 18,190	60.1 13,500	61.7 13,870	53.7 12,080	8.8 1,980			60.1 13,500	61.7 13,870	53.7 12,080	8.8 1,980		
A	mm ft in	7316 24'	7520 24'8"	7338 24'1"	7430 24'5"	7270 23'10"	7330 24'1"	7650 25'1"	7680 25'2"	7900 25'11"	520 1'9"			7650 25'1"	7680 25'2"	7900 25'11"	520 1'9"		
E	mm ft in	1,116 3'8"	1,302 4'3"	1,136 3'9"	1,220 4'	1,070 3'6"	1,130 3'8"	1,400 4'7"	1,470 4'10"	1,700 5'7"	40 2"			1,400 4'7"	1,470 4'10"	1,700 5'7"	40 2"		
H	mm ft in	2,836 9'4"	2,705 8'10"	2,811 9'3"	2,760 9'1"	2,850 9'4"	2,810 9'3"	2,520 8'3"	2,580 8'6"	2,440 8'0"	530 1'9"			2,520 8'3"	2,580 8'6"	2,440 8'0"	530 1'9"		
L	mm ft in	5,032 16'6"	5,084 16'8"	5,069 16'8"	5,180 17'0"	5,060 16'7"	5,120 16'10"	4,530 14'10"	5,290 17'4"	5,490 18'0"	510 1'8"			4,530 14'10"	5,290 17'4"	5,490 18'0"	510 1'8"		
M	mm ft in	1,054 3'5"	1,192 3'11"	1,056 3'6"	1,130 3'9"	1,000 3'3"	1,040 3'5"	1,130 3'8"	1,320 4'4"	1,500 4'11"	10 0'			1,130 3'8"	1,320 4'4"	1,500 4'11"	10 0'		
N	mm ft in	1,578 5'2"	1,632 5'4"	1,584 5'2"	1,610 5'3"	1,560 5'2"	1,580 5'2"	1,490 4'11"	1,630 5'4"	1,670 5'6"	450 1'5"			1,490 4'11"	1,630 5'4"	1,670 5'6"	450 1'5"		
V	mm in	2,500 98"	2,500 98"	2,650 104"	2,500 98"	2,500 98"	2,500 98"	2,500 98"	2,550 100"	2,650 104"	2,500 98"			2,500 98"	2,550 100"	2,650 104"	2,500 98"		
a1 clearance circle	mm ft in	11,569 37'11"	11,665 38'3"	11,719 38'5"	11,620 38'2"	11,580 38'	11,600 38'1"	11,970 39'3"	11,840 38'10"	12,060 39'7"	430 1'5"			11,970 39'3"	11,840 38'10"	12,060 39'7"	430 1'5"		
Operating weight	kg lb	12,299 27,120	12,270 27,060	12,388 27,320	12,400 27,350	12,070 26,620	12,110 26,700	12,250 27,000	12,440 27,420	12,720 28,060	340 750			12,250 27,000	12,440 27,420	12,720 28,060	340 750		

\*Calculated with additional protective guarding. (WL86009,WL86010)

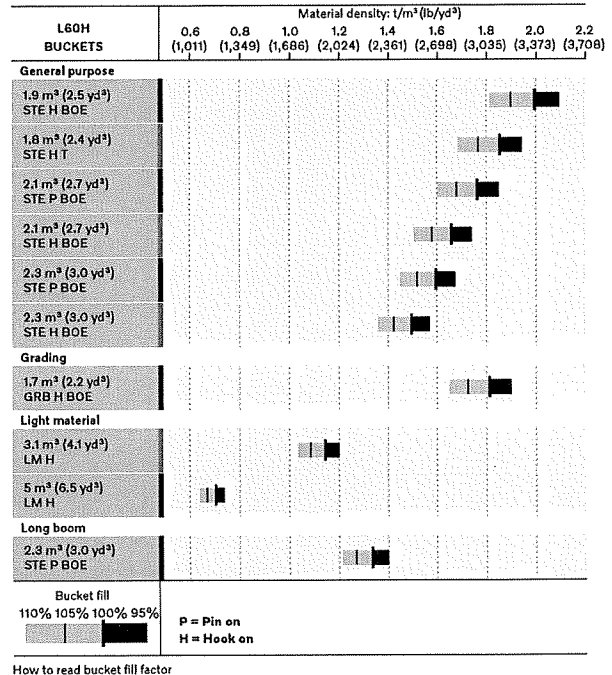
\*\*Calculated with logging counterweight.

Note: This only applies to genuine Volvo attachments.

## Bucket Selection Chart

The chosen bucket is determined by the density of the material and the expected bucket fill factor. The actual bucket volume is often larger than the rated capacity, due to the features of the TP linkage, including an open bucket design, good rollback angles in all positions and good bucket filling performance. The example represents a standard boom configuration. Example: Sand and gravel. Fill factor ~ 105%. Density 1.5 t/m³ (2,530 lb/yd³). Result: The 2.1 m³ (2.8 yd³) bucket carries 2.2 m³ (2.9 yd³). For optimum stability always consult the bucket selection chart.

Material	Bucket fill, %	Material density		ISO/SAE bucket volume		Actual volume	
		t/m³	lb/yd³	m³	yd³	m³	yd³
Earth/Clay	~ 110	~ 1.55	~ 2,610	1.9	2.5	2.1	2.8
		~ 1.40	~ 2,360	2.1	2.8	2.3	3.0
		~ 1.30	~ 2,190	2.3	3.0	2.5	3.3
Sand/Gravel	~ 105	~ 1.65	~ 2,780	1.9	2.5	2.0	2.6
		~ 1.50	~ 2,530	2.1	2.8	2.2	2.9
		~ 1.35	~ 2,280	2.3	3.0	2.1	2.8
Aggregate	~ 100	~ 1.75	~ 2,950	1.9	2.5	1.9	2.5
		~ 1.55	~ 2,610	2.1	2.8	2.1	2.8
		~ 1.55	~ 2,610	2.3	3.0	2.3	3.0
Rock	≤100	~ 1.70	~ 2,870	1.7	2.2	1.7	2.2



## Supplemental Operating Data

Tires 20.5 R25 L3		Standard boom				Long boom			
		17.5 R25 L2		20.5 R25 L2		600/65 R25 L3		600/65 R25 L3	
Width over tires	mm in	-130	-5.1	+8	+0.3	+96	+3.8	+96	+3.8
Ground clearance	mm in	-68	-2.7	-10	-0.4	-30	-1.2	-22	-0.9
Tipping load, full turn	kg lb	-337	-743	-166	-366	-72	-159	0	0
Operating weight	kg lb	-544	-1,199	-112	-247	+8	+18	+3	+7
Calculated with 2.3 m³ (3.0 yd³) STE P BOE, additional protective guarding									



# Volvo L70H specifications

L70H* MICH 20.5R25 XHA2 L3		General purpose												Grading		Light material		LongBoom**	
		WLA87535	WLA86405	WLA86401	WLA86404	WLA86407	WLA86413	WLA92477	WLA80562	WLA80634	WLA86413								
		2.3 m³ (3.0 yd³) STE H BOE	2.2 m³ (2.9 yd³) HD STE H T	2.0 m³ (2.7 yd³) HD STE H BOE	2.2 m³ (2.8 yd³) HD STE H BOE	2.3 m³ (3.0 yd³) HD STE H BOE	2.2 m³ (2.8 yd³) HD STE P BOE	2.2 m³ (2.9 yd³) GRB H BOE	3.4 m³ (4.4 yd³) LM H	6.4 m³ (8.4 yd³) LM H	2.2 m³ (2.9 yd³) HD STE P BOE								
Volume, heaped ISO/SAE	m³ yd³	2.4 3.1	2.2 2.9	2.1 2.7	2.3 3.0	2.4 3.1	2.3 3.0	2.2 2.9	3.4 4.4	6.4 8.4	2.3 3.0								
Volume at 110% fill factor	m³ yd³	2.6 3.5	2.4 3.2	2.3 3.0	2.5 3.3	2.6 3.5	2.5 3.3	2.4 3.2	3.7 4.9	7.0 9.2	2.5 3.3								
Static tipping load, straight	kg lb	9,740 21,480	9,840 21,710	9,770 21,550	9,710 21,410	9,670 21,320	10,310 22,730	7,920 17,470	9,253 20,400	8,830 19,460	-1,550 -3,400								
at 35° turn	kg lb	8,710 19,200	8,810 19,420	8,740 19,270	8,680 19,130	8,640 19,050	9,240 20,370	7,040 15,530	8,246 18,180	7,790 17,180	-1,430 -3,140								
at full turn	kg lb	8,400 18,530	8,500 18,740	8,430 18,590	8,370 18,460	8,340 18,380	8,920 19,680	6,780 14,950	7,949 17,530	7,490 16,510	-1,390 -3,070								
Breakout force	kN lbf	878 19,740	913 20,520	928 20,860	885 20,110	876 19,690	98.7 22,200	62.7 14,090	71.7 16,130	53.9 12,110	-1.8 -410								
A	mm ft in	7,510 24' 8"	7,700 25' 3"	7,440 24' 5"	7,490 24' 7"	7,520 24' 8"	7,370 24' 2"	7,950 26' 1"	7,776 25' 6"	8,330 27' 4"	470 1' 7"								
E	mm ft in	1,210 4' 0"	1,360 4' 6"	1,140 3' 9"	1,190 3' 11"	1,210 4' 0"	1,080 3' 6"	1,670 5' 6"	1,466 4' 10"	1,960 6' 5"	20 0' 1"								
H	mm ft in	2,740 9' 0"	2,620 8' 7"	2,790 9' 2"	2,760 9' 0"	2,740 9' 0"	2,830 9' 3"	2,360 7' 9"	2,531 8' 4"	2,160 7' 1"	490 1' 6"								
L	mm ft in	5,170 16' 11"	5,220 17' 1"	5,110 16' 9"	5,170 17' 0"	5,200 17' 1"	5,100 16' 9"	4,720 15' 6"	5,455 17' 11"	5,790 19' 0"	470 1' 6"								
M	mm ft in	1,160 3' 10"	1,270 4' 2"	1,110 3' 8"	1,140 3' 9"	1,160 3' 10"	1,060 3' 6"	1,350 4' 5"	1,339 4' 5"	1,720 5' 8"	20 0' 1"								
N	mm ft in	1,660 5' 5"	1,690 5' 7"	1,640 5' 4"	1,650 5' 5"	1,660 5' 5"	1,610 5' 3"	1,570 5' 2"	1,680 5' 6"	1,720 5' 8"	390 1' 4"								
V	mm in	2,650 104"	2,500 98"	2,650 104"	2,650 104"	2,650 104"	2,650 104"	2,650 104"	2,650 104"	2,750 108"	2,650 104"								
a1 clearance circle	mm ft in	11,800 38' 8"	11,750 38' 7"	11,760 38' 7"	11,790 38' 8"	11,800 38' 9"	11,740 38' 6"	12,320 40' 5"	11,980 39' 4"	12,410 40' 9"	370 1' 3"								
Operating weight	kg lb	13,950 30,760	13,920 30,700	13,950 30,770	13,990 30,840	14,000 30,880	13,720 30,260	14,240 31,400	14,193 31,290	14,730 32,490	510 1120								

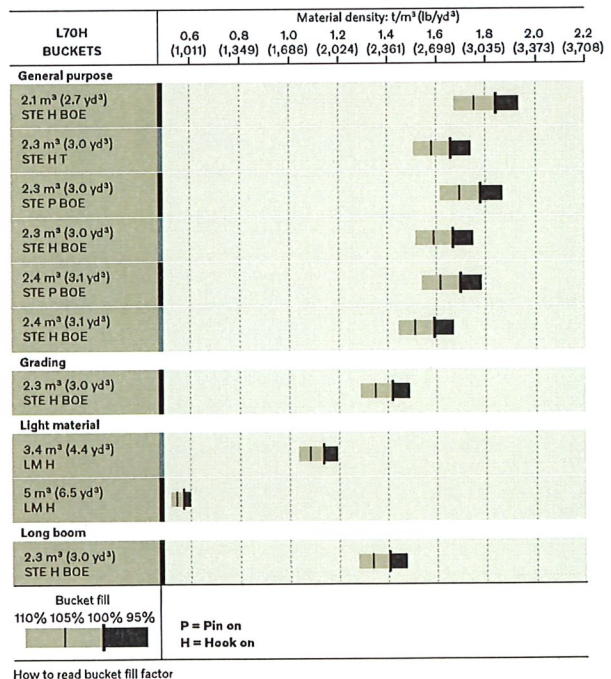
\*Calculated with additional protective guarding. (WL86009, WL86010)  
 \*\*Calculated with logging counterweight.

Note: This only applies to genuine Volvo attachments.

## Bucket Selection Chart

The chosen bucket is determined by the density of the material and the expected bucket fill factor. The actual bucket volume is often larger than the rated capacity, due to the features of the TP linkage, including an open bucket design, good rollback angles in all positions and good bucket filling performance. The example represents a standard boom configuration. Example: Sand and gravel. Fill factor ~ 105%. Density 1.55 t/m³ (2,610 lb/yd³). Result: The 2.6 m³ (3.4 yd³) bucket carries 2.7 m³ (3.5 yd³). For optimum stability always consult the bucket selection chart.

Material	Bucket fill, %	Material density		ISO/SAE bucket volume		Actual volume	
		t/m³	lb/yd³	m³	yd³	m³	yd³
Earth/Clay	~ 110	~ 1.55	~ 2,610	2.5	3.3	2.7	3.5
		~ 1.45	~ 2,440	2.6	3.4	2.9	3.8
		~ 1.40	~ 2,360	2.8	3.7	3.1	4.0
Sand/Gravel	~ 105	~ 1.65	~ 2,780	2.5	3.3	2.6	3.4
		~ 1.55	~ 2,610	2.6	3.4	2.7	3.5
		~ 1.50	~ 2,530	2.8	3.7	2.9	3.7
Aggregate	~ 100	~ 1.75	~ 2,950	2.5	3.3	2.5	3.3
		~ 1.65	~ 2,780	2.6	3.4	2.6	3.4
		~ 1.60	~ 2,700	2.8	3.7	2.8	3.7
Rock	≤ 100	~ 1.80	~ 3,030	2.2	2.9	2.2	2.9



## Supplemental Operating Data

			Standard boom				Long boom	
Tires 20.5 R25 L3			20.5 R25 L2		600/65 R25 L3		600/65 R25 L3	
Width over tires	mm	ft in	+8	0.3	+96	3.8	+96	3.8
Ground clearance	mm	ft in	-8	-0.3	-32	-1.3	-24	-0.9
Tipping load, full turn	kg	lb	-62	-137	-39	-86	+9	+20
Operating weight	kg	lb	-113	-249	+7	+15	+4	+9

Calculated with 2.3 m³ (3.0 yd³) STE H BOE, additional protective guarding



# Volvo L90H specifications

L90H* MICH 20.5R25 XHA2 L3		General purpose										Grading		Light material		LongBoom**	
		WLA86299	WLA86303	WLA86319	WLA86304	WLA86320	WLA86331	WLA85404	WLA92687	WLA92683	WLA86319						
		2.3 m³ (3.0 yd³) HD STE H BOE	2.6 m³ (3.4 yd³) HD STE H T	2.7 m³ (3.5 yd³) HD STE P BOE	2.8 m³ (3.7 yd³) HD STE H BOE	2.8 m³ (3.7 yd³) HD STE P BOE	2.8 m³ (3.7 yd³) STE H BOE	2.8 m³ (3.7 yd³) GRB H BOE	4.1 m³ (5.4 yd³) LM H	7.0 m³ (9.2 yd³) LM H	2.7 m³ (3.5 yd³) HD STE P BOE						
Volume, heaped ISO/SAE	m³ yd³	2.3 3.0	2.6 3.4	2.7 3.5	2.8 3.7	2.8 3.7	2.8 3.7	2.8 3.7	4.1 5.4	7.0 9.2	2.7 3.5						
Volume at 110% fill factor	m³ yd³	2.5 3.3	2.9 3.7	3.0 3.9	3.1 4.0	3.1 4.0	3.1 4.0	3.1 4.0	4.5 5.9	7.7 10.1	3.0 3.9						
Static tipping load, straight	kg lb	11,520 25,390	11,610 25,610	11,970 26,390	11,320 24,960	11,930 26,310	11,430 25,200	9,250 20,390	10,810 23,840	10,530 23,210	-1,110 -2,440						
at 35° turn	kg lb	10,220 22,540	10,310 22,740	10,640 23,450	10,030 22,120	10,600 23,380	10,140 22,360	8,170 18,020	9,550 21,060	9,250 20,390	-1,030 -2,260						
at full turn	kg lb	9,840 21,700	9,930 21,890	10,240 22,590	9,650 21,290	10,210 22,510	9,760 21,530	7,860 17,330	9,180 20,230	8,870 19,550	-1,000 -2,220						
Breakout force	kN lbf	138.8 31,030	135.9 30,560	140.1 31,510	126.4 28,430	137.6 30,940	126.4 28,430	92.2 20,730	100.6 22,610	87.0 19,560	1.8 410						
A	mm ft in	7,560 24'10"	7,850 25'9"	7,560 24'10"	7,690 25'3"	7,580 24'11"	7,690 25'3"	8,170 26'10"	8,040 26'5"	8,350 27'5"	410 1'4"						
E	mm ft in	1,170 3'10"	1,410 4'8"	1,160 3'9"	1,280 4'2"	1,180 3'10"	1,280 4'2"	1,760 5'9"	1,590 5'3"	1,860 6'1"	-10 0"						
H	mm ft in	2,910 9'7"	2,730 8'11"	2,920 9'7"	2,830 9'4"	2,910 9'7"	2,830 9'4"	2,400 7'11"	2,610 8'7"	2,410 7'11"	420 1'4"						
L	mm ft in	5,310 17'5"	5,420 17'10"	5,360 17'7"	5,450 17'11"	5,390 17'8"	5,420 17'10"	4,900 16'1"	5,640 18'6"	5,840 19'2"	420 1'4"						
M	mm ft in	970 3'2"	1,170 3'10"	970 3'2"	1,070 3'6"	990 3'3"	1,070 3'6"	1,200 3'11"	1,350 4'5"	1,550 5'1"	-70 -3"						
N	mm ft in	1,660 5'5"	1,730 5'8"	1,650 5'5"	1,700 5'7"	1,660 5'5"	1,700 5'7"	1,520 5'0"	1,710 5'7"	1,700 5'7"	360 1'2"						
V	mm in	2,650 108"	2,750 108"	2,750 108"	2,750 108"	2,750 108"	2,750 108"	2,880 113"	2,750 108"	3,000 118"	2,750 108"						
a1 clearance circle	mm ft in	12,040 39'6"	12,180 40'	12,040 39'6"	12,100 39'6"	12,050 39'6"	12,100 39'6"	12,770 41'11"	12,300 40'4"	12,700 41'8"	300 1'0"						
Operating weight	kg lb	15,470 34,110	15,460 34,080	15,330 33,810	15,580 34,350	15,350 33,850	15,490 34,160	15,680 34,620	15,840 34,920	16,270 35,870	790 1,730						

\*Calculated with additional protective guarding. (WL86009,WL86010)

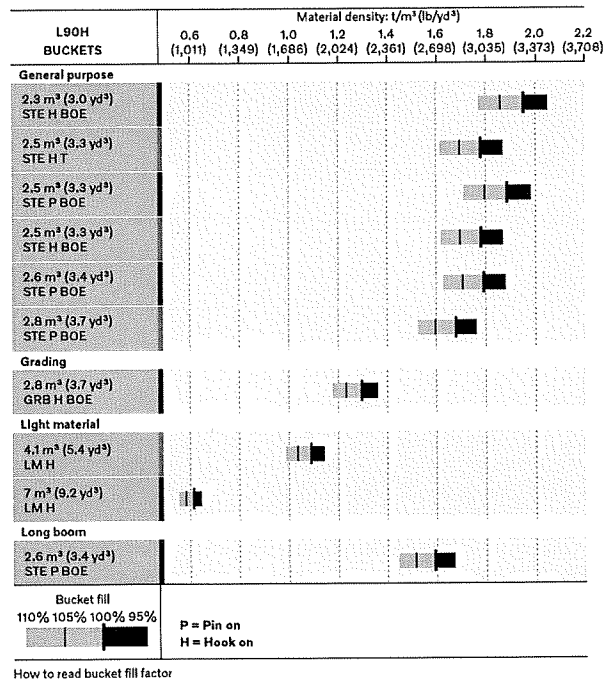
\*\*Calculated with logging counterweight.

Note: This only applies to genuine Volvo attachments.

## Bucket Selection Chart

The chosen bucket is determined by the density of the material and the expected bucket fill factor. The actual bucket volume is often larger than the rated capacity, due to the features of the TP linkage, including an open bucket design, good rollback angles in all positions and good bucket filling performance. The example represents a standard boom configuration. Example: Sand and gravel. Fill factor ~ 105%. Density 1.55 t/m³ (2,610 lb/yd³). Result: The 2.6m³ (3.4yd³) bucket carries 2.7m³ (3.5 yd³). For optimum stability always consult the bucket selection chart.

Material	Bucket fill, %	Material density		ISO/SAE bucket volume		Actual volume	
		t/m³	lb/yd³	m³	yd³	m³	yd³
Earth/Clay	~ 110	~ 1.55	~ 2,610	2.5	3.3	2.7	3.5
		~ 1.45	~ 2,440	2.6	3.4	2.9	3.8
		~ 1.40	~ 2,360	2.8	3.7	3.1	4.0
Sand/Gravel	~ 105	~ 1.65	~ 2,780	2.5	3.3	2.6	3.4
		~ 1.55	~ 2,610	2.6	3.4	2.7	3.5
		~ 1.50	~ 2,530	2.8	3.7	2.9	3.7
Aggregate	~ 100	~ 1.75	~ 2,950	2.5	3.3	2.5	3.3
		~ 1.65	~ 2,780	2.6	3.4	2.6	3.4
		~ 1.60	~ 2,700	2.8	3.7	2.8	3.7
Rock	≤100	~ 1.80	~ 3,030	2.2	2.9	2.2	2.9



## Supplemental Operating Data

Tires 20.5 R25 L3		Standard boom				Long boom	
		20.5 R25 L2		650/65 R25 L3		650/65 R25 L3	
Width over tires	mm ft in	+4	+0.2	+164	+6.5	+164	+6.5
Ground clearance	mm ft in	-8	-0.3	-4	-0.2	+12	+0.5
Tipping load, full turn	kg lb	-70	-154	+315	+694	+287	+633
Operating weight	kg lb	-111	-245	+545	+1,202	+543	+1,197
Calculated with 2.6 m³ (3.4 yd³) STE P BOE, additional protective guarding							



# Equipment

## STANDARD EQUIPMENT

	L60H	L70H	L90H
<b>Engine</b>			
Exhaust after-treatment system	•	•	•
3-stage air cleaner, pre-cleaner, primary and secondary filter	•	•	•
Indicator glass for coolant level	•	•	•
Preheating of induction air	•	•	•
Fuel pre-filter with water trap	•	•	•
Fuel filter	•	•	•
Crank case breather oil trap	•	•	•
Exhaust heat ventilation	•	•	•
Delayed engine shutdown	•	•	•
<b>Tires</b>			
20.5R25	•	•	•
<b>Drivetrain</b>			
Automatic Power Shift	•	•	•
Fully automatic gear shifting, 1-4	•	•	•
PWM-controlled gear shifting	•	•	•
Forward and reverse switch by hydraulic lever console	•	•	•
Rimpull control	•	•	•
Indicator glass for transmission oil level	•	•	•
Differentials: Front, 100% hydraulic diff lock. Rear, conventional	•	•	•
<b>Electrical system</b>			
24 V, pre-wired for optional accessories	•	•	•
Alternator 80A/3135W	•	•	•
Battery disconnect switch	•	•	•
Maintenance-free batteries	•	•	•
Battery box, steel	•	•	•
Fuel gauge	•	•	•
Electric horn	•	•	•
<b>Instrument cluster:</b>			
Fuel level	•	•	•
Diesel Exhaust Fluid/AdBlue level	•	•	•
Transmission temperature	•	•	•
Coolant temperature	•	•	•
Instrument lighting	•	•	•
<b>Lighting:</b>			
Twin halogen front headlights with high and low beams	•	•	•
Parking lights	•	•	•
Double brake and tail lights	•	•	•
Turn signals with flashing hazard light function	•	•	•
Halogen work lights (2 front and 2 rear)	•	•	•
CoPilot	•	•	•
Rearview camera in CoPilot	•	•	•
Max Boom Height	•	•	•

## STANDARD EQUIPMENT

	L60H	L70H	L90H
<b>* Contronic monitoring system</b>			
Contronic display	•	•	•
Fuel consumption	•	•	•
Diesel Exhaust Fluid/AdBlue consumption	•	•	•
Ambient temperature	•	•	•
Clock	•	•	•
Test function for warning and indicator lights	•	•	•
Brake test	•	•	•
Warning and indicator lights:	•	•	•
Battery charging	•	•	•
Parking brake	•	•	•
Warning and display message:	•	•	•
Regeneration	•	•	•
Engine coolant temperature	•	•	•
Charge air temperature	•	•	•
Engine oil temperature	•	•	•
Engine oil pressure	•	•	•
Transmission oil temperature	•	•	•
Transmission oil pressure	•	•	•
Hydraulic oil temperature	•	•	•
Brake pressure	•	•	•
Parking brake applied	•	•	•
Brake charging	•	•	•
Overspeed at direction change	•	•	•
Axle oil temperature	•	•	•
Steering pressure	•	•	•
Crank case pressure	•	•	•
Attachment lock open	•	•	•
<b>Level warnings:</b>			
Fuel level	•	•	•
Diesel Exhaust Fluid/AdBlue level	•	•	•
Engine coolant level	•	•	•
Transmission oil level	•	•	•
Hydraulic oil level	•	•	•
Washer fluid level	•	•	•
<b>Engine torque reduction in case of malfunction indication:</b>			
High engine coolant temperature	•	•	•
High engine oil temperature	•	•	•
Low engine oil pressure	•	•	•
High crank case pressure	•	•	•
High charge air temperature	•	•	•
<b>Engine shutdown to idle in case of malfunction indication:</b>			
High transmission oil temperature	•	•	•
Slip in transmission clutches	•	•	•
Key pad, background lit	•	•	•
Start interlock when gear is engaged	•	•	•
<b>Hydraulic system</b>			
Boom suspension system	•	•	•
Main valve, double acting 2-spool with hydraulic pilots	•	•	•
<b>Variable displacement axial piston pumps (2) for:</b>			
Working hydraulics, pilot hydraulics, steering system, brakes	•	•	•
Cooling fan, brakes	•	•	•
Hydraulic control levers	•	•	•
Hydraulic lever lock	•	•	•
Automatic boom kick-out	•	•	•
Automatic bucket positioner	•	•	•
Double acting hydraulic cylinders	•	•	•
Indicator glass for hydraulic oil level	•	•	•
Hydraulic oil cooler	•	•	•



STANDARD EQUIPMENT			
	L60H	L70H	L90H
<b>Brake system</b>			
Dual brake circuits	•	•	•
Dual brake pedals	•	•	•
Secondary brake system	•	•	•
Parking brake, electrical-hydraulic	•	•	•
Brake wear indicators	•	•	•
Outboard mounted circulating oil cooled wet disc brakes on all four wheels	•	•	•
<b>Cab</b>			
ROPS (ISO 3471), FOPS (ISO 3449)	•	•	•
Single key kit door/start	•	•	•
Acoustic inner lining	•	•	•
Cigarette lighter, 24 V power outlet	•	•	•
Lockable door	•	•	•
Cab heating with fresh air inlet and defroster	•	•	•
Fresh air inlet with two filters	•	•	•
Automatic heat control	•	•	•
Floor mat	•	•	•
Dual interior lights	•	•	•
Interior rearview mirrors	•	•	•
Dual exterior rearview mirrors	•	•	•
Sliding window, right side	•	•	•
Tinted safety glass	•	•	•
Retractable seatbelt (SAE J386)	•	•	•
Adjustable steering wheel	•	•	•
Storage compartment	•	•	•
Document pocket	•	•	•
Sun visor	•	•	•
Beverage holder	•	•	•
Windshield washer front and rear	•	•	•
Windshield wipers front and rear	•	•	•
Interval function for front and rear wipers	•	•	•
Foot step, left side (toolbox lockable included)	•	•	•
<b>Service and maintenance</b>			
Engine oil remote drain and fill	•	•	•
Transmission oil remote drain and fill	•	•	•
Sliding hydraulic oil cooler and AC-condenser	•	•	•
Lubrication manifolds, ground accessible	•	•	•
Pressure test ports: transmission and hydraulic, quick connects	•	•	•
Service platforms with anti-slip surfaces	•	•	•
Quick-fit hydraulic oil fill	•	•	•
CareTrack	•	•	•
Telematics, 6 -year subscription	•	•	•
Toolbox, lockable	•	•	•
<b>External equipment</b>			
Basic fenders, front and rear	•	•	•
Viscous cab mounts	•	•	•
Rubber engine and transmission mounts	•	•	•
Engine hood, electronically openable	•	•	•
Frame, joint lock	•	•	•
Vandalism lock for engine compartment	•	•	•
Lifting eyes	•	•	•
Tie down eyes	•	•	•
Tow hitch	•	•	•
Counterweight, pre-drilled for optional guards	•	•	•

OPTIONAL EQUIPMENT			
	L60H	L70H	L90H
<b>Engine</b>			
Air pre-cleaner, cyclone type	•	•	•
Air pre-cleaner, oil-bath type	•	•	•
Air pre-cleaner, turbo type	•	•	•
Engine auto shut down	•	•	•
Engine block heater, 120V / 230V	•	•	•
Fuel heater	•	•	•
Fuel fill strainer	•	•	•
Hand throttle control	•	•	•
Max. fan speed, hot climate	•	•	•
Reversible cooling fan	•	•	•
<b>Drivetrain</b>			
Lock-up torque converter	•	•	•
Rear axle with limited slip	•	•	•
Speed limiter, 20 km/h	•	•	•
Speed limiter, 30 km/h	•	•	•
Speed limiter, 40 km/h	•	•	•
<b>Hydraulic system</b>			
Arctic kit: Attachment locking, pilot hoses and hydraulic oil	•	•	•
Attachment bracket, cast, visibility-optimized	•	•	•
Attachment bracket, side-tilting	•	•	•
Separate attachment locking, long boom	•	•	•
Separate attachment locking, standard boom	•	•	•
Single acting lifting function	•	•	•
HD load-sensing hydraulics, pump kit included	—	•	—
Hydraulic fluid, biodegradable, Volvo	•	•	•
Hydraulic fluid, fire resistant	•	•	•
Hydraulic fluid, for hot climate	•	•	•
Hydraulic, 3 functions, standard/long boom	•	•	•
Hydraulic, 4 functions, standard/long boom	•	•	•
Detent for 3rd hydraulic function	•	•	•
Adjustable flow for 3rd hydraulic function	•	•	•
Single lever control, 2 functions	•	•	•
Single lever control, 3 functions	•	•	•
Hydraulic, 2 functions Electro-servo, std/long boom	•	•	•
Hydraulic, 3 functions Electro-servo, std/long boom	•	•	•
Hydraulic, 4 functions Electro-servo, std/long boom	•	•	•
Single lever control, 2 funct Electro-servo, std/long boom	•	•	•
Single lever control, 3 funct Electro-servo, std/long boom	•	•	•
Single lever control, 4 funct Electro-servo, std/long boom	•	•	•
<b>Brake system</b>			
Stainless steel, brake lines	—	•	•
Axle oil cooler	—	•	•
Parking brake alarm, audible	•	•	•



# Equipment

## OPTIONAL EQUIPMENT

	L60H	L70H	L90H
<b>Cab</b>			
ACC control panel, with Fahrenheit scale	•	•	•
Anchorage for Operator's manual	•	•	•
Asbestos dust protection filter	•	•	•
Automatic Climate Control, ACC	•	•	•
Automatic Climate Control, ACC, corrosion protection condenser	•	•	•
Cab air pre-cleaner, cyclone type	•	•	•
Carbon filter - cab	•	•	•
Remote door opener	•	•	•
Lunch box holder	•	•	•
Operator's seat, Volvo air-suspended, heavy-duty, high back, heated	•	•	•
Operator's seat, Volvo air-susp, 3-point seatbelt	•	•	•
Operator's seat, Premium Comfort ISRI	•	•	•
Operator's seat, Premium Comfort ISRI 3-point seat belt	•	•	•
Armrest, operator's seat, ISRI, left only	•	•	•
Armrest, operator's seat, Volvo, left	•	•	•
Safety belt, 3" (75mm) width	•	•	•
Safety belt warning	•	•	•
Radio installation kit including 12 volt outlet, left-side	•	•	•
Radio installation kit including 12 volt outlet, right-side	•	•	•
Radio installation kit, 12V, for USA	•	•	•
Radio with AUX, Bluetooth and USB connection	•	•	•
DAB Radio	•	•	•
Subwoofer	•	•	•
Forward view mirror	•	•	•
Rear view mirrors, el.adjusted and heated	•	•	•
Rear view mirrors, long arm right	•	•	•
Rear view mirrors, el.adjusted and heated, long arm right	•	•	•
Steering wheel knob	•	•	•
Sun blinds, rear windows	•	•	•
Sun blinds, side windows	•	•	•
Timer cab heating	•	•	•
Universal door/ignition key	•	•	•
Window, sliding, door	•	•	•
Cab, Hot applications. Roof, steel	•	•	•
Fire extinguisher cab	•	•	•
Outside steel protection cab	•	•	•
Rear view mirrors long arm, cab	•	•	•
Reinforced windshield, flat	•	•	•
<b>Service and maintenance</b>			
Automatic lubrication system	•	•	•
Automatic lubrication system for long boom	•	•	•
Oil sampling valve	•	•	•
Refill pump for automatic lubrication system	•	•	•
Tool kit	•	•	•
Wheel nut wrench kit	•	•	•
<b>Electrical</b>			
Battery disconnect switch, additional in cab	•	•	•
Anti-theft device	•	•	•
Headlights, assym. left	•	•	•
Headlights, assym. right LED	•	•	•
Headlights, assym. left LED	•	•	•

## OPTIONAL EQUIPMENT

	L60H	L70H	L90H
Emergency stop	•	•	•
License plate holder, lighting	•	•	•
Reduced function working lights when reverse gear activated	•	•	•
Side marker lamps	•	•	•
Forward camera, colour	•	•	•
Rear view camera including monitor, colour	•	•	•
Rear view mirrors, long arm, right side	•	•	•
Rearview mirrors, adjustable, el. heated	•	•	•
Reverse alarm	•	•	•
Reverse lights	•	•	•
Reversing warning light	•	•	•
Reverse warning light, strobe lightning	•	•	•
Warning beacon (flasher), LED automatic	•	•	•
Warning beacon (flasher), LED	•	•	•
Seatbelt indicator, external	•	•	•
Working lights, attachments, 1 LED	•	•	•
Warning beacon LED	•	•	•
Warning beacon LED automatic	•	•	•
LED Head Light	•	•	•
LED tail light	•	•	•
LED working lights, attachments	•	•	•
LED working lights on cab, front and rear	•	•	•
LED working lights on cab, front, 2 alt. 4 LED lamps	•	•	•
LED working lights on cab, rear, 2 alt. 4 LED lamps	•	•	•
LED working lights, rear in grille, 2 LED lamps	•	•	•
LED working lights, front above head lamps, 2 LED lamps	•	•	•
LED work lights, side on cab, 4 LED lamps	•	•	•
LED light packages	•	•	•
Working lights halogen, attachments	•	•	•
Working lights on cab halogen, front and rear	•	•	•
Working lights on cab halogen, rear	•	•	•
Can Bus Interface	•	•	•
<b>Protective Equipment</b>			
Anti-theft device	•	•	•
Bellyguard front	•	•	•
Bellyguard rear	•	•	•
Boom cylinder hose and tube guards	•	•	•
Cab roof, heavy duty	•	•	•
Center hinge and rear frame guard	•	•	•
Corrosion protection, painting of machine	•	•	•
Cover plate front frame, heavy-duty	•	•	•
Cover plate, under cab	•	•	•
Cover plates rear frame	•	•	•
Guards for front headlights	•	•	•
Grease nipple guards	•	•	•
Guards for radiator grill	•	•	•
Guards for tail lights, heavy-duty	•	•	•
Wheel/axle seal guards	•	•	•
Window guards, side and rear	•	•	•
Windshield guard	•	•	•
<b>Other Equipment</b>			
CareTrack, GSM/Satellite	•	•	•
CE-marking	•	•	•
Comfort Drive Control (CDC)	•	•	•
Comfort Drive Control (CDC) Electro-servo	•	•	•
Secondary steering	•	•	•
Counterweight, logging	•	•	•
Counterweight, signal painted, chevrons	•	•	•
Noise reduction kit, EU excluding decal	•	•	•
Sign, 50 km/h	•	•	•
Sign, slow moving vehicle	•	•	•



OPTIONAL EQUIPMENT				
	L60H	L70H	L90H	
External equipment				
Deleted front mudguards	•	•	•	
Bracket for fire extinguisher	•	•	•	
Fire suppression system	•	•	•	
Mudguards, full cover, rear for 80-series tires	•	•	•	
Mudflap kit for mudguards, full cover for 80-series tires	•	•	•	
Mudguards, full cover, rear and front/rear for 65-series tires	•	•	•	
Mudflap kit for mudguards, full cover for 65-series tires	•	•	•	
Footsteps front frame	•	•	•	
Footsteps, right-hand side	•	•	•	
Flexible rear step	•	•	•	
Cab ladder, rubber suspended	•	•	•	
Tires and Rims				
20.5R25	•	•	•	
600/65R25	•	•	•	
650/65R25	—	—	•	
620/75R26 Agriculture application only	•	•	•	
750/65R26 Agriculture application only	•	•	•	

OPTIONAL EQUIPMENT			
	L60H	L70H	L90H
<b>Attachments</b>			
Buckets:			
Straight	•	•	•
Spade nose	•	•	•
High tipping	•	•	•
Light material	•	•	•
Grading	•	•	•
Wear parts:			
Bolt-on edge	•	•	•
Bolt-on or weld-on bucket teeth	•	•	•
Segments	•	•	•
Log grapples	•	•	•
Fork equipment	•	•	•
Material handling arm	•	•	•
Snow blade	•	•	•
Broom	•	•	•
Sand spreading bucket	•	•	•
Bale clamp	•	•	•
Drum rotator	•	•	•

## SELECTION OF VOLVO OPTIONAL EQUIPMENT

External axle cooling (L70H, L90H)



Reversing camera with radar detect CoPilot



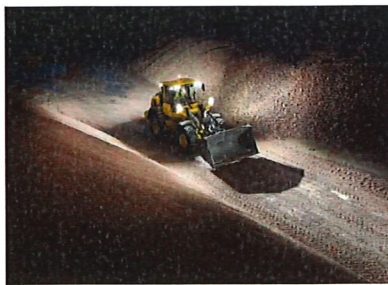
Premium seat



Comfort Drive Control



Light packages



Lock-up converter (L70H, L90H)



Not all products are available in all markets. Under our policy of continuous improvement, we reserve the right to change specifications and design without prior notice. The illustrations do not necessarily show the standard version of the machine.





**Volvo Construction Equipment**  
[volvoce.com](http://volvoce.com)



# VOLVO

## Volvo Construction Equipment North America Warranty – Disclaimers – Limitations Limited Warranty

Volvo Construction Equipment North America ("Volvo CE") hereby extends to its authorized dealers ("Dealer") and the Dealer's end-use customers ("Customer", and both Dealer and Customer are referred to herein as a "Buyer"), who purchase a new Volvo construction equipment machine ("Machine") or new Volvo part ("Part", both of which are referred to herein as a "Product") from Volvo the following limited warranty:

Subject to the exceptions and limitations set forth below, Volvo CE or Dealer will repair or replace any part of a new Machine or new Part which proves to be defective in material or workmanship during the following periods (the "Warranty Period"):

- Volvo wheel loaders: 12 months/2500 hours, whichever first occurs
- Volvo articulated haulers: 12 months/2500 hours, whichever first occurs
- Volvo hydraulic excavators: 12 months/2500 hours, whichever first occurs
- Volvo motor graders: 12 months/2500 hours, whichever first occurs
- Volvo compactors: 12 months/2500 hours, whichever first occurs
  - 24 month unlimited hours on DD90 and larger compactors
- Volvo pavers: 12 months/2500 hours, whichever first occurs
  - 24 month unlimited hours on 6000 / 7000 series pavers
- Volvo milling: 12 months/2500 hours, whichever first occurs
- Volvo compact wheel loaders (up to 100 net hp.): 12 months/unlimited hours
- Volvo skid steer loaders: 12 months/unlimited hours; Lifetime arm for one-sided
- Volvo compact hydraulic excavators (less than 11 metric tons): 12 months/unlimited hours
- Volvo backhoe loaders: 12 months/unlimited hours
- Volvo engines: 12 months/2500 hours, whichever first occurs
- Volvo parts: 6 months/1500 hours, whichever first occurs
- Volvo remanufactured components: 12 months/2500 hours, whichever first occurs
- Volvo Attachments: 12 months

The Warranty Period commences immediately following the delivery of said Product to the Buyer who first puts said Product into use. The foregoing limited warranty shall include the labor cost to accomplish the repair or replacement of the defective part provided that the repair or replacement was performed by a Dealer.

The foregoing warranty does not cover: (i) any Product found to have been damaged by abuse, accident, other casualty or a failure to maintain or use the warranted Product in accordance with the applicable manuals or instructions (Buyer is required to use only original equipment manufacturer filters during the Warranty Period); (ii) the labor costs to repair or replace defective Parts after the expiration of the Warranty Period of the Machine in which such Part is located; (iii) overtime labor premiums; (iv) costs and expenses associated with the transportation of Dealer's service personnel to and from the location of the warranted Product; (v) any parts, components, attachments or accessories for which Buyer receives a separate warranty by the manufacturer or producer thereof (in specified cases said warranty may be administered by Volvo CE); (vi) maintenance items or ground engaging parts that have achieved their normal service life.

### **DISCLAIMER OF IMPLIED WARRANTIES AND LIMITATION OF REMEDIES**

THE FOREGOING WARRANTY TO BUYER IS EXCLUSIVE AND IS IN LIEU OF ALL OTHER WARRANTIES, EXPRESSED OR IMPLIED, AND THERE IS NO IMPLIED WARRANTY OF MERCHANTABILITY OR FITNESS FOR A PARTICULAR PURPOSE.

REMEDIES AVAILABLE TO BUYER ARE LIMITED TO MAKING A CLAIM UNDER THE FOREGOING WARRANTY AND ARE EXCLUSIVE AND EXPRESSLY LIMITED TO OBTAINING THE PARTS AND LABOR IN ACCORDANCE WITH THE TERMS OF SAID WARRANTY.



## **Warranty – Disclaimers – Limitations**

### **LIMITATIONS OF LIABILITY AND DAMAGES**

Regardless of whether a claim against Volvo CE or Dealer is based on the foregoing warranty or is an action in contract, tort (negligence or strict liability) or otherwise, their respective liability for losses, damages or expenses of any kind arising from the design, manufacture, repair or sale of the Products is limited, unless otherwise prohibited by law, to an amount not exceeding the cost performing the obligations contained in the foregoing warranty, and in no event shall their respective or joint liability exceed the value of the Product or part thereof giving rise to such liability.

### **CONSEQUENTIAL AND SIMILAR DAMAGES NOT RECOVERABLE**

Except for performing the obligations of the foregoing warranty in accordance with its terms, Volvo CE and Dealer shall have no liability for loss, damage, or expense, directly or indirectly, attributable to a loss of use of a Product, loss or damage to property other than the Product, loss or damage to the Product or any part thereof or any other economic or commercial loss, including, without limitation, lost profits or special or consequential damages (except liability for any type of consequential damages which by law may not be disclaimed). The parties intend that this prohibition against consequential and similar damages will survive and be effective even if the limitation of remedies in the foregoing sections is found to fail of its essential purpose under section 2-719 of the Uniform Commercial Code.

### **ALLOCATION OF RISK**

The foregoing warranty disclaimers, limitations of liability and limitation of remedies are bargained allocations of risks among (i) the Customer who purchased the Product; (ii) the Dealer who sold the Product, and (iii) Volvo CE, which is a third party beneficiary of the contract of sale between the Customer and the Dealer. The Buyer of the Product accepts the foregoing warranty and the other bargained for allocations of risk as part of the agreed price for the purchase of the Product to which the foregoing warranty applies. Volvo CE is prepared to offer different warranties and other allocations of risk for other prices. However, any such change in the warranty or the allocation of risks must be confirmed in writing by Volvo CE.

### **STATUTE OF LIMITATIONS**

Any action by a Buyer of a Product for breach of contract, for breach of warranty arising under, or for a cause of action arising out of the sale of a Product, whether based on contract, tort (negligence or strict liability) or otherwise, shall be commenced within one (1) year after the cause of action has accrued. Any such cause of action shall be deemed to have accrued at the earlier of (i) the discovery of the defect or breach, or (ii) the expiration of the applicable Warranty Period.