



Stalker SAM Trailer Build Sheet Line 321

applied concepts, inc.

2039940

Page 1 of 1

855 E. Collins Blvd
Richardson, TX 75081
Phone: 972-398-3780
Fax: 972-398-3781

National Toll Free: 1-800- STALKER

Date: 08/28/20

Inside Sales Partner:

Brooke Journet

Reg Sales Mgr:

Scott Berry

brookej@stalkerradar.com

972-837-5129

scottb@stalkerradar.com

Effective From : 06/16/2020

Valid Through: 09/14/2020

Lead Time: 32 working days

| | | | |
|--|--|--|-----------------------------------|
| Bill To: Florida Sheriff FL | Customer ID: P46105 Accounts Payable | Ship To: Florida Sheriff FL | UPS Freight LTL (3-5 Days) |
|--|--|--|-----------------------------------|

| Grp | Qty | Package | Description | Wrnty/Mo | Price | Ext Price |
|-----|-----|-------------|---------------------|----------|-------|-----------|
| 1 | 1 | 821-1000-00 | Stalker SAM Trailer | 24 | | |

| Ln | Qty | Part Number | Description | Price | Ext Price |
|----|-----|-------------|--|-------|-----------|
| 1 | 1 | 015-2532-59 | [253259] SAM Trailer with Top Display | | \$0.00 |
| 2 | 1 | 200-1229-00 | [412466] Traffic Stats Sensor, 2-Comm Ports, USB, Open | | \$0.00 |
| 3 | 1 | 015-5345-00 | [274714] SAM Trailer Solar Panel | | \$0.00 |
| 7 | 1 | 200-1173-00 | [412467] Traffic Analyst App, Thumb Drive, Manual | | \$0.00 |
| 8 | 1 | 011-0218-00 | Stalker SAM/SAM-R Trailer User Manual | | \$0.00 |
| 9 | 1 | 006-0569-00 | Certificate of Accuracy, Speed Sensor II | | \$0.00 |
| 10 | 1 | 060-1000-24 | 24-Month Warranty | | \$0.00 |
| 11 | 1 | 005-0000-00 | RAL6005-Trailer Sheriff Moss Green | | \$0.00 |
| 12 | 1 | 015-2713-16 | SAM/SAM-R AC Battery Charger, 8-10amps | | \$0.00 |

Group Total

Product

Sub-Total:

Discount

Sales Tax 0%

Payment Terms: Net 30 days

Shipping & Handling:

Total: USD

001



Stalker Traffic Analyst | Powerful Traffic Data Tool

Making traffic statistics work for you.

Collect and analyze valuable traffic data in support of Grant applications and community policing, with industry-leading effectiveness.

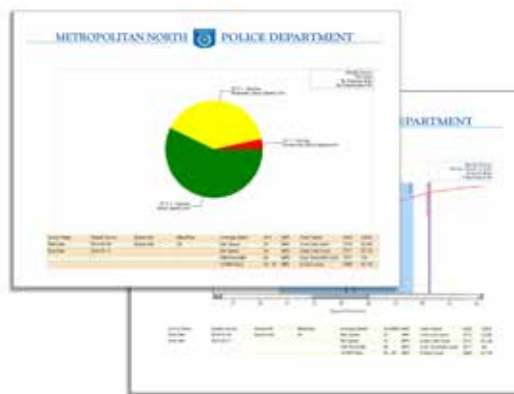
The very first section in most Grant applications is to define the need. Whether for adjusting a speed limit, purchasing a speed/message sign, or allocation of department resources, properly assembled traffic data can make all of the difference between winning or losing an application. Powerful traffic statistic tools are essential when analyzing aggregate data.

The new Stalker Traffic Analyst is that tool. Updated analysis controls allow the user to take raw data and display it by count vs time, count vs speed, and 85th percentile, just to name a few. Data can be split, graphed, filtered, and then rendered in a color report designed with Agency Branding and support information.

Beginning with the setup, intuitive survey management tools walk the user through calendar setup, location details, speed and time resolutions, vehicle classification, speeds, distances, and more.



- **Intuitive Survey and Calendar setup**
- **Powerful Visual analysis**
- **Easy, user-defined report generation** ▶
- **Compare and toggle between multiple reports**
- **Group file operations into project folder**



STALKER®

Power to Enforce.

StalkerRadar.com



Powerful Visual Analysis

The analysis window is the visual heart of the program. The floating palettes control the visual display and survey details may be added such as Google Map/satellite views, descriptions, and notes.



Floating Palettes

■ Analysis Control

The Analysis Control palette where the analysis type is chosen and then applied to the analysis window.

- Count vs Time
- Weekly Count vs Time
- Count vs Speed
- Percentile Chart
- Average Speed vs Time
- Speed vs Time Bubble Chart
- Enforcement - Pie chart - **NEW**

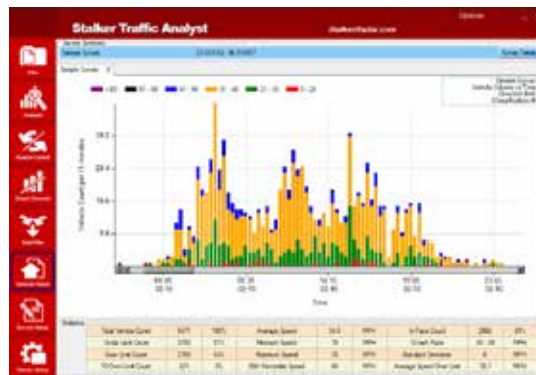
A simple tool for Law Enforcement, citizens, city council, and management. Quickly display vehicle speeds below, moderately above, and excessively above speed limit threshold.

■ Graphic Controls

The Graph Controls palette provides additional options such as grid detail, data values, display type (graph or tabular) and graph type.

■ Data Filtering

Fine tune the data by more selective parameters such speed, dates, times, classification, and traffic direction.



Analysis Window

Stalker Traffic Analyst

Stalker Traffic Analyst 1.000

Stalker

Stalker Traffic Analyst

Stalker Traffic Analyst

Stalker Traffic Analyst

Stalker Traffic Analyst

Stalker Traffic Analyst

Stalker Traffic Analyst

Stalker Traffic Analyst

Stalker Traffic Analyst

Stalker Traffic Analyst

Stalker Traffic Analyst

Stalker Traffic Analyst

Stalker Traffic Analyst

Stalker Traffic Analyst

Stalker Traffic Analyst

Stalker Traffic Analyst

Stalker Traffic Analyst

Stalker Traffic Analyst

Stalker Traffic Analyst

Stalker Traffic Analyst

Stalker Traffic Analyst

Stalker Traffic Analyst

Stalker Traffic Analyst

Stalker Traffic Analyst

Stalker Traffic Analyst

Stalker Traffic Analyst

Stalker Traffic Analyst

Stalker Traffic Analyst

Stalker Traffic Analyst

Stalker Traffic Analyst

Stalker Traffic Analyst

Stalker Traffic Analyst

Stalker Traffic Analyst

Stalker Traffic Analyst

Stalker Traffic Analyst

Stalker Traffic Analyst

Stalker Traffic Analyst

Stalker Traffic Analyst

Stalker Traffic Analyst

Stalker Traffic Analyst

Stalker Traffic Analyst

Stalker Traffic Analyst

Stalker Traffic Analyst

Stalker Traffic Analyst

Stalker Traffic Analyst

Stalker Traffic Analyst

Stalker Traffic Analyst

Stalker Traffic Analyst

Stalker Traffic Analyst

Stalker Traffic Analyst

Stalker Traffic Analyst

Stalker Traffic Analyst

Stalker Traffic Analyst

Stalker Traffic Analyst

Stalker Traffic Analyst

Stalker Traffic Analyst

Stalker Traffic Analyst

Stalker Traffic Analyst

Stalker Traffic Analyst

Stalker Traffic Analyst

Stalker Traffic Analyst

Stalker Traffic Analyst

Stalker Traffic Analyst

Stalker Traffic Analyst

Stalker Traffic Analyst

Stalker Traffic Analyst

Stalker Traffic Analyst

Stalker Traffic Analyst

Stalker Traffic Analyst

Stalker Traffic Analyst

Stalker Traffic Analyst

Stalker Traffic Analyst

Stalker Traffic Analyst

Stalker Traffic Analyst

Stalker Traffic Analyst

Stalker Traffic Analyst

Stalker Traffic Analyst

Stalker Traffic Analyst

Stalker Traffic Analyst

Stalker Traffic Analyst

Stalker Traffic Analyst

Stalker Traffic Analyst

Stalker Traffic Analyst

Stalker Traffic Analyst

Stalker Traffic Analyst

Stalker Traffic Analyst

Stalker Traffic Analyst

Stalker Traffic Analyst

Stalker Traffic Analyst

Stalker Traffic Analyst

Stalker Traffic Analyst

Stalker Traffic Analyst

Stalker Traffic Analyst

Stalker Traffic Analyst

Stalker Traffic Analyst

Stalker Traffic Analyst

Stalker Traffic Analyst

Stalker Traffic Analyst

Stalker Traffic Analyst

Stalker Traffic Analyst

Stalker Traffic Analyst

Stalker Traffic Analyst

Stalker Traffic Analyst

Stalker Traffic Analyst

Stalker Traffic Analyst

Stalker Traffic Analyst

Stalker Traffic Analyst

Stalker Traffic Analyst

Stalker Traffic Analyst

Stalker Traffic Analyst

Stalker Traffic Analyst

Stalker Traffic Analyst

Stalker Traffic Analyst

Stalker Traffic Analyst

Stalker Traffic Analyst

Stalker Traffic Analyst

Stalker Traffic Analyst

Stalker Traffic Analyst

Stalker Traffic Analyst

Stalker Traffic Analyst

Stalker Traffic Analyst

Stalker Traffic Analyst

Stalker Traffic Analyst

Stalker Traffic Analyst

Stalker Traffic Analyst

Stalker Traffic Analyst

Stalker Traffic Analyst

Stalker Traffic Analyst

Stalker Traffic Analyst

Stalker Traffic Analyst

Stalker Traffic Analyst

Stalker Traffic Analyst

Stalker Traffic Analyst



Stalker SAM | Speed Awareness Monitor

Stalker's SAM trailers are powered by Precision Solar Controls and feature Stalker speed measurement accuracy in a rugged, dependable trailer platform.



■ Optional Solar Panels

■ 18" Amber LED characters - legible at up to 1000 ft.

■ 4D Deep-cycle battery - provides over 18 days of operation and longer time between charges

■ Stalker K-Band Doppler Radar

■ New Optional Programmable LED Violator Alert

■ Optional Integrated Statistics Package

■ Hand-held controller



◀ Programmable LED Violator Alert
(Optional)



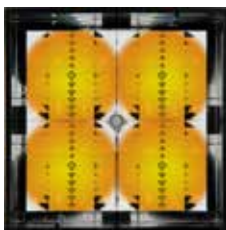
STALKER®

Power to Enforce.

stalkerRadar.com

LED Lamp Matrix and Pulse Modulation

At the heart of the Stalker SAM is Precision Solar Control's LED Lamp Matrix and LED Pulse Width Modulation. The LED Lamp Matrix concentrates and focuses the LEDs' light, allowing the motorist to see the sign at a greater distance and, thus, act on the speed warning quicker.



LED Pulse Width Modulation significantly increases the time between battery charges and powers the LEDs so that they remain at a consistent brightness throughout the battery's discharge cycle.

Stalker K-Band Radar

The speed measurement component is pure Stalker - accurate and durable. Stalker's Stationary Speed Sensor II radar has greater range, sensitivity, and tracking when compared to competitive signs' radar.



4D Deep-cycle 12-volt battery Provides over 18 days of continuous operation yielding longer operational time between battery charges.

Graffiti-resistant paint

The finish keeps the trailer looking clean and neat for a professional department image, while its all steel construction provides a sturdy platform and reduces damage sustained in the field.

Dedicated hand-held controller

Complete programming and diagnostic functions in the palm of your hand.



Four stabilizing/leveling jacks

aid in proper placement and stability while allowing one officer to position the SAM on nearly any type of terrain.

Retractable/Removable tongue

Options:

Top-mounted solar panel

The panels recharge a day's worth of battery use with only 2.5 hours of sunlight allowing for "infinite" field operation.



New Programmable LED Violator Alert

High powered LED Violator Alert flashes to warn motorists when they have exceeded a pre-set speed. Three (3) different user-programmable settings and choice of blue/red or white/white.



Integrated statistical package

gathers valuable traffic data for improved grant writing support and verification of the sign's impact on traffic speeds.

STALKER SAM

Specifications:

TRAILER

| | |
|------------|---|
| Width | 64" (1.63m) |
| Length | 116" (2.95m) tongue in travel position 57 1/2" (1.5m) tongue in display position |
| Height | 91" (2.31m) |
| Weight | 700 lbs. (317.5kg) |
| Main Frame | 2" x 4" x .120" Steel Tubing |

DISPLAY CABINET

| | |
|---------------------------|-------------------|
| Material Thickness | .156" ABS Plastic |
| Width | 36" (.91m) |
| Height | 25 1/2" (.65m) |
| Depth | 5 1/4" (.13m) |
| Lexan Window Thickness | .125" |
| Cabinet Temperature Delta | ±20° |

ENERGY SOURCE

| | |
|--------------|--|
| Battery Bank | 4D Deep-Cycle Battery 18 days @ 78°F (25°C) |
|--------------|--|

RADAR - STALKER STATIONARY SPEED SENSOR II - 24.125 GHz

| | |
|--------------------|----------------------|
| Detection Distance | Up to 1,200' (365 m) |
| Beam Width | 30° x 32° |

Accessories:



Coupler Lock

Wheel Lock

Wheel Jack

STALKER®

Power to Enforce.

applied concepts, inc.
855 East Collins Blvd. ■ Richardson, Texas 75081
972.398.3780 ■ Fax 972.398.3781

Copyright © 2019 Applied Concepts, Inc. All Rights Reserved. Specifications are subject to change.



006-0455-00 Rev F

800-STALKER