

Specification Number	Code	Description	Price - All Zones
	50 E165	Upgrade to the Bobcat® E165 Excavator	5751
	50 Options	32% off MSRP for all Factory Installed Options	0.32
	50 Attachments	24% off MSRP for all Attachments	0.24



Product Quotation

Quotation Number: BDH-00162

Date: 2020-08-21 11:47:41

Description

E165 Bobcat Excavator

Auto-Idle
Auto Shift, 2 Speed Travel
Auto Shut-off
Auxiliary Hydraulics with Selectable Flow
Battery Disconnect
Cab, Enclosed with Auto HVAC - ROPS
Includes: Adjustable Arm Rests, Cup Holder, Heated Air
Suspension Seat, AM/FM Stereo with CD Player & MP3
Port, Retractable Seat Belt
Camera: Rear and Side
Control Lock-Out, disabling all machine functionality
Control Pattern Selector Valve (ISO/STD)
Display, 7" LCD
Password protection
Emergency Stop Switch
Engine/Hydraulic Monitor with Shutdown
Engine Restart Prevention System
Fingertip Auxiliary Hydraulic Control
Foot Pedal Attachment Control
Horn (joystick mounted)
Hydraulic joystick Controls

Part No	Qty	Price Ea.	Total
M3332	1	\$122,574.76	\$122,574.76

Mirrors, Left, and Right
Pin-On Attachment Mounting System
Power Boost
Power Modes: Power+, Power, Standard, Economy
Self-Diagnostics System
Smart Power Control (SPC)
Steel Tracks
Telematics - Machine IQ
Travel Motion & Swing Alarm
Turbocharged, Tier 4, Non DPF
Two way Piping with Pedal and Fingertip Control
Vandalism Protection
Includes: Locking Access Panels and Locking Fuel Cap
Work Lights: Boom (2), House (2), and Rear (1)
Work Modes: Dig, Lift, Breaker (single directional aux flow), & Shear (dual directional aux flow)
12 Volt Power Port
Warranty: 2 years, or 2000 hours whichever occurs first

36" Trenching Bucket

M3332-A01-C02	1	\$3,757.44	\$3,757.44
---------------	---	------------	------------

Total of Items Quoted	\$126,332.20
-----------------------	--------------

Dealer Assembly Charges	\$0.00
-------------------------	--------

Quote Total - US dollars	\$126,332.20
--------------------------	--------------

Notes:

All prices subject to change without prior notice or obligation. This price quote supersedes all preceding price quotes.

Customer Acceptance:

Purchase Order: _____

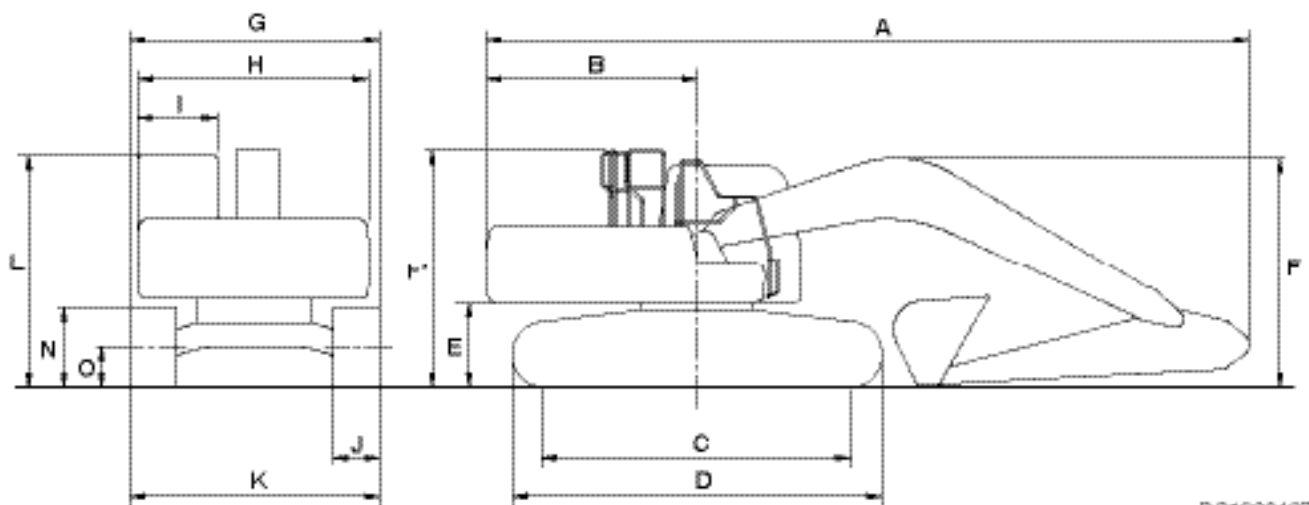
Authorized Signature:

Print: _____ Sign: _____ Date: _____

EXCAVATOR SPECIFICATIONS

Excavator Machine Dimensions

- Where applicable, specifications conform to SAE or ISO standards and are subject to change without notice.



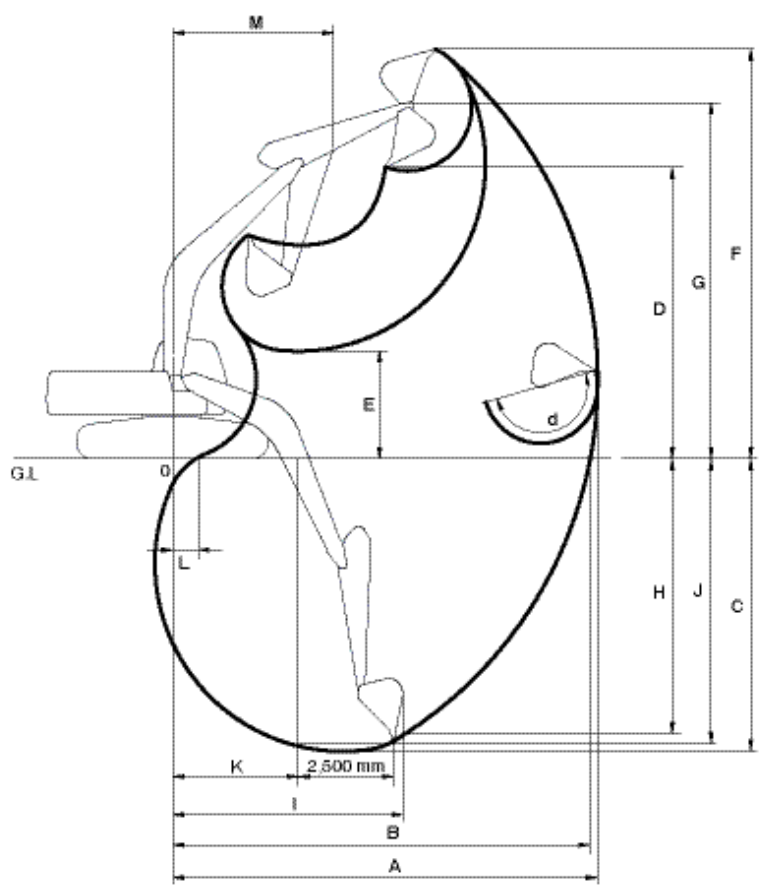
DS1900497

Dimension		16 ft - 9 in (5.1 m) Boom
		8 ft - 2in (2.5 m) Arm
A	Shipping Length	325.0 in (8,250 mm)
B	Tail Swing Radius	87.0 in (2,205 mm)
C	Tumbler Distance	129.0 in (3,275 mm)
D	Track Length	160.0 in (4,065 mm)
E	Counterweight Clearance	40.75 in (1,035 mm)
F (Boom)	Shipping Height	112.0 in (2,842 mm)
F (Hose)	Shipping Height	120.5 in (3,060 mm)
F' (Guard Rail)	Shipping Height	123.0 in (3,125 mm)
G	Shipping Width	102.0 in (2,590 mm)
H	House Width	100.0 in (2,540 mm)
I	Cabin Width	39.8 in (1,010 mm)
J	Shoe Width	23.6 in (600 mm)
K	Undercarriage Width	102.0 in (2,590 mm)
L	Height Over Cabin	115.0 in (2,925 mm)
M	Cabin Height Above House	33.1 in (840 mm)
N	Track Height	36.0 in (915 mm)
O	Car Body Clearance	18.1 in (460 mm)

**Specification(s) are based on engineering calculations and are not actual measurements. Specification(s) are provided for comparison purposes only and are subject to change without notice. Specification(s) for your individual Bobcat equipment will vary based on normal variations in design, manufacturing, operating conditions, and other factors*

EXCAVATOR SPECIFICATIONS (CONT'D)

E165 Excavator Working Range Dimensions



EX1401493

EXCAVATOR SPECIFICATIONS (CONT'D)

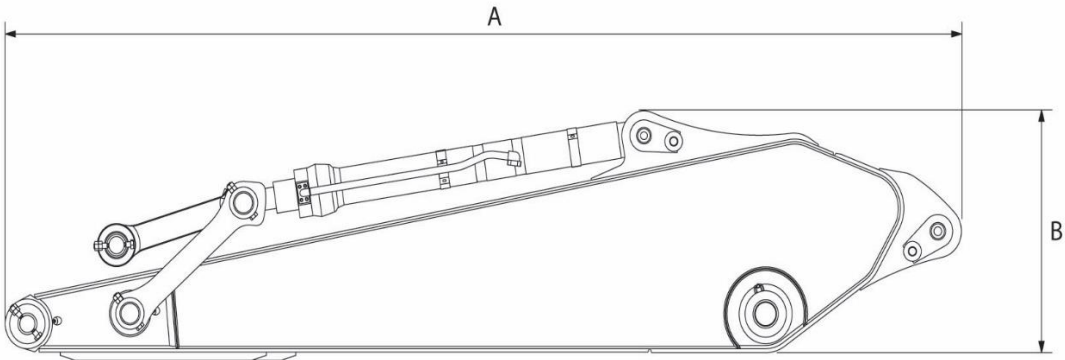
E165 Working Range Specifications

DIM.	Boom Type	16 ft - 9 in (5.1 m)
	Arm Type	8 ft - 2 in (2.5 m)
	Bucket Type (PCSA)	0.86 yd ³ (0.66 m ³)
A	Max. Digging Reach	353.0 in (8,965 mm)
B	Max. Digging Reach (Ground)	346.0 in (8,790 mm)
C	Max. Digging Depth	240.0 in (6,085 mm)
D	Max. Loading Height	256.0 in (6,505 mm)
E	Min. Loading Height	96.0 in (2,445 mm)
F	Max. Digging Height	357.0 in (9,070 mm)
G	Max. Bucket Pin Height	309.0 in (7,850 mm)
H	Max. Vertical Wall Depth	199.00 in (5,055 mm)
I	Max. Radius Vertical	225.0 in (5,725 mm)
J	Max. Depth to 2,500 mm (8 ft) Line	231.0 in (5,860 mm)
K	Min. Radius 2,500 mm (8 ft) Line	82.0 in (2,085 mm)
L	Min. Digging Reach	22.6 in (575 mm)
M	Min. Swing Radius	125.0 in (3,165 mm)
d	Bucket Angle	178°

EXCAVATOR SPECIFICATIONS (CONT'D)

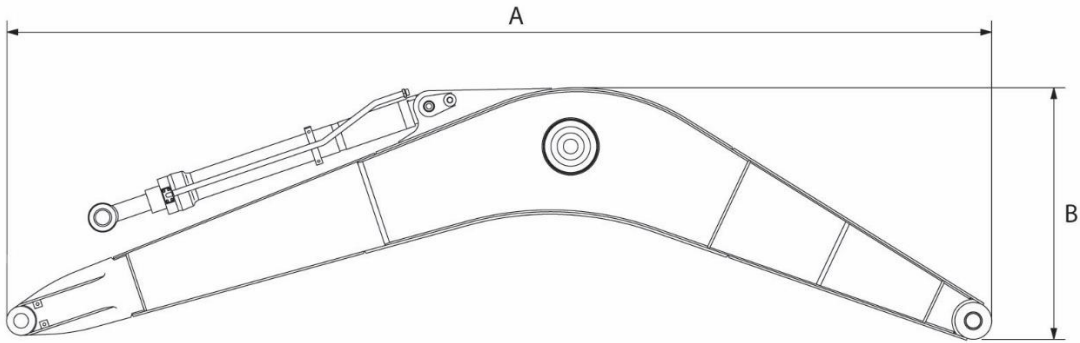
Arm/Boom Dimensions

- Where applicable, specifications conform to SAE or ISO standards and are subject to change without notice.



FG021610

Description	8 ft 2 in (2.5 m)
Length (A)	130.1 in (3,305 mm)
Length (B)	32.1 in (815 mm)
Width	18.1 in (460 mm)
Weight	1,015 lb. (460 kg)

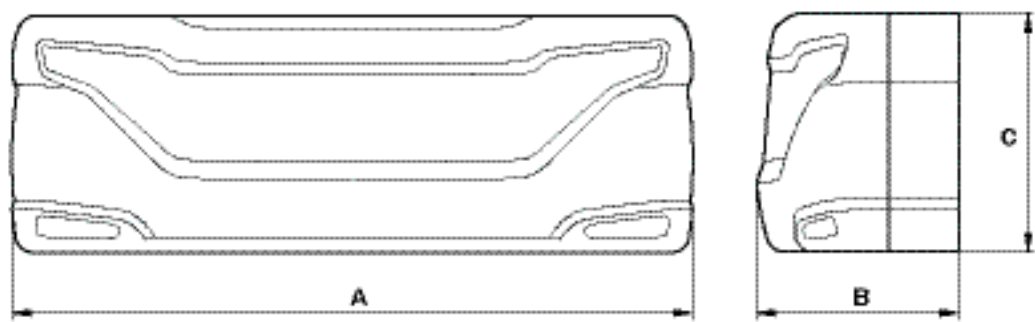


FG021609

Description	16ft - 9 in (5.1 m)
Length (A)	208.3 in (5,290 mm)
Length (B)	151.2 in (1,300 mm)
Width	26.6 in (675 mm)
Weight	2,050 lb (930 kg)

EXCAVATOR SPECIFICATIONS (CONT'D)

Counterweight Dimensions



EX1401711_BGT

Description	Counterweight
Length (A)	2440 (8' 0")
Length (B)	969,8 (3' 2")
Length (C)	1130 (3' 8")
Weight	5,754 lb (2,610 kg)

Performance

Component			Specification	
			Metric	English
Bucket Capacity	SAE (PCSA)		0.66 m³	0.86 yd³
Operating Weight	Standard Track		17.4 metric tons	19.2 tons
Engine	Model		1204F	
	Type		4-cycle Water Cooled, Turbocharged, Direct Injection, Exhaust Gas Recirculation	
	Rated Output (Gross)		97.9 kW @ 2,000 rpm	131 HP (133 PS) @ 2,000 rpm
	Rated Output (Net)		94.9 kW @ 2,000 rpm	127 HP (129 PS) @ 2,000 rpm
	Maximum Torque		54 kg.m @ 1,400 rpm	390 ft lb. @ 1,400 rpm
	Fuel Tank Capacity		292 L	77.1 U.S. gal.
Hydraulic Pump	Type		Axial Piston	
	Discharging Pressure		330 kg/cm²	4,694 psi
	Maximum Discharge Quantity		2 x 152 L/min	2 x 40.2 U.S. gpm.
	Hydraulic Oil Capacity	Tank Level	181 L	47.8 U.S. gal.
		System	210 L	55.5 U.S. gal.
Performance	Digging Capability (SAE)	Bucket	9.6/*10.2 metric tons	10.6/*11.2 tons
		Arm	7.5/*7.9 metric tons	8.3/*8.7 tons
	Digging Capability (ISO)	Bucket	11.1/*11.7 metric tons	12.2/*12.9 tons
		Arm	7.7/*8.2 metric tons	8.5/*9.0 tons
	Swing Speed		10.5 rpm	
	Travel Speed	High-speed	5.1 km/h	3.11 MPH
		Low-speed	3.1 km/h	1.93 MPH
	Traction Force	High-speed	8.1 metric tons	9.1 tons
		Low-speed	15.8 metric tons	17.4 tons
	Gradeability		35° (70% slope)	
Ground Pressure		0.44 kg/cm²	6.21 psi	
Ground Clearance			434 mm	17 in
Track Shoe Width	Standard Track		600 mm	23.6 in
Upper Roller Qty.			2 per side	
Lower Roller Qty.			7 per side	

Base Option: Boom (5,100 mm), Arm (2,500 mm)

* Power Boost

EXCAVATOR SPECIFICATIONS (CONT'D)

Digging Force

Description		16 ft - 9 in (5.1 m) Boom
		2.5 m (8' 2") Arm
Bucket Breakout Force	Normal (SAE)	21,164 lb. (9,600 kg) (94.1 kN)
	Power Boost (SAE)	22,487 lb. (10,200 kg) (100.0 kN)
	Normal (ISO)	24,471 lb. (11,100 kg) (108.9 kN)
	Power Boost (ISO)	25,794 lb. (11,700 kg) (114.7 kN)
Arm Breakout Force	Normal (SAE)	16,535 lb. (7,500 kg) (73.5 kN)
	Power Boost (SAE)	17,417 lb. (7,900 kg) (77.5 kN)
	Normal (ISO)	16,976 lb. (7,700 kg) (75.5 kN)
	Power Boost (ISO)	18,077 lb. (8,200 kg) (80.4 kN)
Rotation Angle - Bucket		178°

Ground Pressure

Description	Shoe Width	Boom Length	Arm Length	Bucket Capacity (SAE)	Counterweight	Operating Weight	Ground Pressure
STD (Grouser)	23.6 in (600 mm)	200.8 in (5,100 mm)	98.4 in (2,500 mm)	0.86 yd³ (0.66 m³)	5,735 lb. (2,600 kg)	36,597 lb. (16,600 kg)	5.55 psi (0.39 kg/cm²)

WARRANTY

Bobcat Excavators

Bobcat Company warrants to its authorized dealers and authorized dealers of Bobcat Equipment Ltd., who in turn warrant to the owner, that each new Bobcat excavator with a delivery date on or after January 1, 2019 will be free from proven defects in material and workmanship with respect to (i) all components of the product except as otherwise specified herein for twenty-four (24) months, or a total of 2000 hours of use, whichever occurs first, (ii) tracks for twelve (12) months on a prorated basis based on the remaining depth of the track at the time any defect is discovered, (iii) Bobcat brand batteries, for an initial twelve (12) month warranty period and for an additional twelve (12) months thereafter, Bobcat Company shall reimburse a fixed portion of the cost of replacing the battery as designated by Bobcat in the event of a proven defect and (iv) auxiliary hydraulic quick couplers for six (6) months or 200 hours of use, whichever occurs first. The foregoing time periods shall all commence after delivery by the authorized Bobcat dealer to the original buyer.

During the warranty period, the authorized Bobcat dealer shall repair or replace, at Bobcat Company's option, without charge for parts and labor, any part of the Bobcat product except as otherwise specified herein which fails because of defects in material or workmanship. The owner shall provide the authorized Bobcat dealer with prompt written notice of the defect and allow reasonable time for repair or replacement. Bobcat Company may, at its option, require failed parts to be returned to the factory. Travel time of mechanics and transportation of the Bobcat product to the authorized Bobcat dealer for warranty work are the responsibility of the owner. The remedies provided in this warranty are exclusive.

This warranty does not cover replacement of scheduled service items such as oil, filters, tune-up parts, and other high-wear items. This warranty does not cover damages resulting from abuse, accidents, alterations, use of the Bobcat product with any accessory or attachment not approved by Bobcat Company, air flow obstructions, or failure to maintain or use the Bobcat product according to the instructions applicable to it.

THIS WARRANTY IS EXCLUSIVE AND IN LIEU OF ALL OTHER WARRANTIES AND CONDITIONS, EXCEPT THE WARRANTY OF TITLE. BOBCAT COMPANY DISCLAIMS ALL OTHER WARRANTIES AND CONDITIONS, EXPRESS OR IMPLIED, INCLUDING ANY IMPLIED WARRANTIES OR CONDITIONS OF MERCHANTABILITY OR FITNESS FOR A PARTICULAR PURPOSE. IN NO EVENT SHALL BOBCAT COMPANY OR THE AUTHORIZED BOBCAT DEALER BE LIABLE FOR ANY SPECIAL, INCIDENTAL, INDIRECT OR CONSEQUENTIAL DAMAGES, WHATSOEVER, INCLUDING, BUT NOT LIMITED TO, LOSS OR INTERRUPTION OF BUSINESS, LOST PROFITS, OR LOSS OF MACHINE USE, WHETHER BASED ON CONTRACT, WARRANTY, TORT, NEGLIGENCE, STRICT LIABILITY, STATUTE OR OTHERWISE, EVEN IF BOBCAT COMPANY OR THE AUTHORIZED BOBCAT DEALER HAS BEEN ADVISED OF THE POSSIBILITY OF SUCH DAMAGES. THE TOTAL LIABILITY OF BOBCAT COMPANY AND THE AUTHORIZED BOBCAT DEALERS WITH RESPECT TO THE PRODUCT AND SERVICES FURNISHED HEREUNDER SHALL NOT EXCEED THE PURCHASE PRICE OF THE PRODUCT UPON WHICH SUCH LIABILITY IS BASED.



Bobcat®