

**FSA20-EQU18.0, ITEM# 172**  
**LOADER: Skid Steer Loader 1,850 LB OC - Wheeled Only**  
**236D3 SHERIFF'S CONTRACT WORKSHEET**

512-4236	236D3 SKID STEER LOADER
512-4320	HYDRAULICS, PERFORMANCE, (H1)
512-4110	CONTROL, ISO, ON/OFF
568-4637	RIDE CONTROL, NONE
557-9897	BATTERY, HEAVY DUTY, 850 CCA
495-1672	LIGHTS, HALOGEN
356-6082	REAR LIGHTS
512-4342	ROPS, OPEN (C1)
532-7673	SEAT, SUSPENSION, VINYL
542-6994	SEAT BELT, 2"
416-9265	DISPLAY, ADVANCED, LCD, CAMERA
566-7115	PRODUCT LINK, CELLULAR PL243
486-6956	FAN, COOLING, DEMAND
568-4627	TIRES, 10/16.5 GA 8PR
388-8298	QUICK COUPLER, MANUAL
563-1163	CERTIFICATION ARR, P65
512-3756	INSTRUCTIONS, ANSI, USA
421-8926	SERIALIZED TECHNICAL MEDIA KIT
279-5369	BUCKET-GP, .52 YD3 BOCE 68"

**236D3 SKID STEER LOADER  
SANFORD, NC, USA**Ship Weight  
lbsLIST PRICE  
AT DEALER

Standard Equipment:

**POWERTRAIN**

Cat C3.3B diesel engine  
 -Gross horsepower per SAE J1349  
   74.3 hp (55.4 kW) @ 2400 RPM  
 -Electric fuel priming pump  
 -Glow plugs starting aid  
 -Liquid cooled, direct injection  
 Air cleaner, dual element, radial seal  
 S-O-S sampling valve, hydraulic oil  
 Filter, cartridge type, hydraulic  
 Filters, canister type, fuel  
   and water separator  
 Radiator / hydraulic oil  
   cooler (side-by-side)  
 Spring applied, hydraulically released,  
   parking brakes  
 Hydrostatic transmission  
 Four wheel chain drive

**HYDRAULICS**

ISO and H pattern controls:  
 Electro/hydraulic implement control  
 Electro/hydraulic hydrostatic  
   transmission Control

**ELECTRICAL**

12 volt electrical system  
 80 ampere alternator  
 Ignition key start / stop / aux switch  
 Lights:  
   -Gauge backlighting  
   -Two rear tail lights  
   -Dome light  
 Backup alarm  
 Electrical outlet, beacon

**OPERATOR ENVIRONMENT**

Operator warning system indicators:  
   -Air filter restriction  
   -Alternator output  
   -Armrest raised / operator out of seat  
   -Engine coolant temperature  
   -Engine oil pressure  
   -Glow plug activation  
   -Hydraulic filter restriction  
   -Hydraulic oil temperature  
   -Park brake engages  
   -Engine emission system  
 Gauges: fuel level and hour meter  
 Storage compartment with netting  
 Ergonomic contoured armrest  
 Adjustable joystick controls  
 Control interlock system, when operator  
   Leaves seat or armrest raised :  
   -Hydraulic system disables

- Hydrostatic transmission disables  
 - Parking brake engages  
 ROPS Cab, Open, Tilt Up  
 Anti-theft security system w/6-button  
   keypad  
 FOPS, Level I  
 Top and rear windows  
 Floormat  
 Interior rear view mirror  
 USB charging port  
 Horn  
 Hand (dial) throttle, electronic

**FRAMES**

Lift linkage, radial path  
 Chassis, one piece welded  
 Machine tie down points (6)  
 Belly pan cleanout  
 Support, lift arm  
 Rear bumper, welded

**OTHER STANDARD EQUIPMENT**

Engine enclosure - lockable  
 Extended life antifreeze (-37C, -34F)  
 Coupler, mechanical  
 Hydraulic oil level sight gauge  
 Radiator coolant level sight gauge  
 Radiator expansion bottle  
 Cat ToughGuard TM hose  
 Heavy duty flat faced quick disconnects  
   with integrated pressure release  
 Split D-ring to route work tool hoses  
   along side of left lift arm  
 Hydraulic demand cooling fan  
 Per SAE J818-2007 and EN 474-3:2006 and  
 ISO 14397-1:2007



# Cat<sup>®</sup> 236D3

## SKID STEER LOADER

### FEATURES:

The Cat<sup>®</sup> 236D3 Skid Steer Loader, with its radial lift design, delivers impressive mid-lift reach and excellent digging performance with outstanding drawbar power. The 236D3 features the following:

- **Industry leading sealed and pressurized cab option** provides a cleaner and quieter operating environment with excellent work tool visibility.
- **Available high-back, heated, air ride seat with seat mounted adjustable joystick controls** makes the D3 Series the industry leader in operator comfort.
- **High performance power train** provides maximum performance and production capability through the Electronic Torque Management system, optional two speed travel and an electronic hand/foot throttle with decel pedal capability.
- **High Flow hydraulic system** is available for applications that demand maximum hydraulic work tool performance.
- **Electronically controlled Cat C3.3B engine** provides high horsepower and torque while meeting U.S. EPA Tier 4 Final and EU Stage V emission standards.
- **Cat "Intelligent Leveling" system** provides industry leading technology, integration, and available features such as dual direction self level, work tool return to dig and work tool positioner.
- **Speed Sensitive Ride Control option** improves operation on rough terrain, enabling better load retention, increased productivity and greater operator comfort.
- **Maximize machine capability and control** with the standard Advanced Display providing on-screen adjustments for implement response, hystat response and creep control. Also features multi-language functionality with customizable layouts, security system and rearview camera.
- **Ground level access** to all daily service and routine maintenance points helps reduce machine downtime for greater productivity.
- **Broad range of performance matched Cat Attachments** make the Cat Skid Steer Loader the most versatile machine on the job site.
- **Available Long Lasting LED Work Lights** (front and rear) provide superior job site illumination.

## Specifications

### Engine

Engine Model	Cat 3.3B DIT (turbo)	
Gross Power SAE J1995	55.4 kW	74.3 hp
Net Power SAE 1349	54.6 kW	73.2 hp
Net Power ISO 9249	55.1 kW	73.9 hp
Peak Torque at 1,500 rpm SAE J1995	265 N-m	195 lbf-ft
Displacement	3.3 L	203 in <sup>3</sup>
Stroke	120 mm	4.7 in
Bore	94 mm	3.7 in

### Weights\*

Operating Weight	2979 kg	6,567 lb
------------------	---------	----------

### Power Train

Travel Speed (Forward or Reverse):		
One Speed	11.2 km/h	7.0 mph
Two Speed Option	17.1 km/h	10.6 mph

### Operating Specifications\*

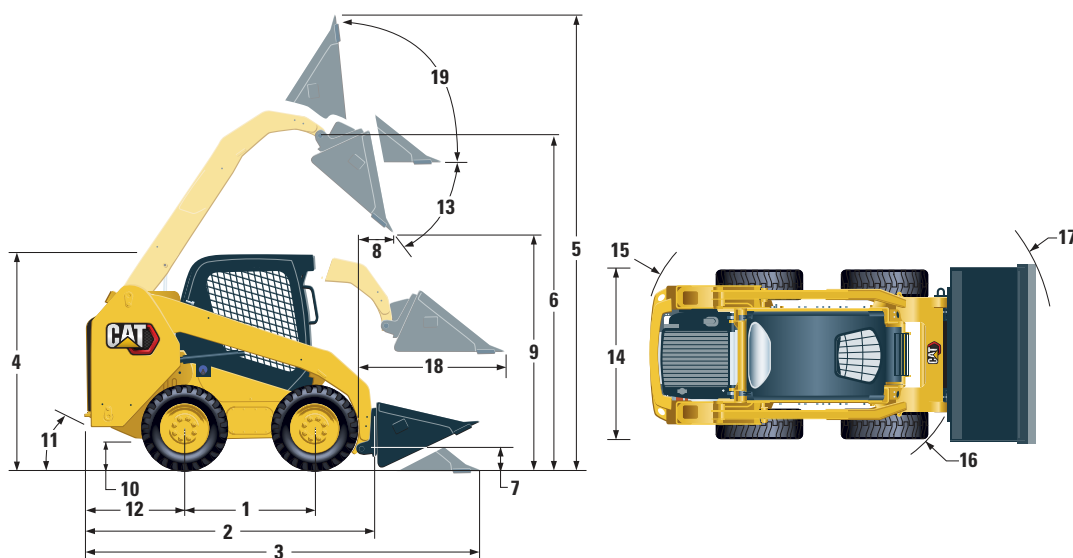
Rated Operating Capacity	820 kg	1,800 lb
Rated Operating Capacity with Optional Counterweight	910 kg	2,000 lb
Tipping Load	1635 kg	3,600 lb
Breakout Force, Tilt Cylinder	2269 kg	5,003 lb

### Hydraulic System

Hydraulic Flow – Standard:		
Loader Hydraulic Pressure	23 000 kPa	3,335 psi
Loader Hydraulic Flow	76 L/min	20 gal/min
Hydraulic Power (calculated)	29 kW	39 hp
Hydraulic Flow – High Flow:		
Maximum Loader Hydraulic Pressure	23 000 kPa	3,335 psi
Maximum Loader Hydraulic Flow	112 L/min	30 gal/min
Hydraulic Power (calculated)	43 kW	58 hp



# 236D3 Skid Steer Loader



## Dimensions\*

1 Wheelbase	1105 mm	43.5 in	11 Departure Angle	26°
2 Length without Bucket	2767 mm	108.9 in	12 Bumper Overhang behind Rear Axle	1021 mm 40.2 in
3 Length with Bucket on Ground	3487 mm	137.3 in	13 Maximum Dump Angle	48°
4 Height to Top of Cab	2082 mm	82.0 in	14 Vehicle Width over Tires	1676 mm 66.0 in
5 Maximum Overall Height	3977 mm	156.6 in	15 Turning Radius from Center – Machine Rear	1639 mm 64.5 in
6 Bucket Pin Height at Maximum Lift	3122 mm	122.9 in	16 Turning Radius from Center – Coupler	1314 mm 51.8 in
7 Bucket Pin Height at Carry Position	190 mm	7.5 in	17 Turning Radius from Center – Bucket	2107 mm 83.0 in
8 Reach at Maximum Lift and Dump	408 mm	16.0 in	18 Maximum Reach with Arms Parallel to Ground	1353 mm 53.3 in
9 Clearance at Maximum Lift and Dump	2359 mm	92.9 in	19 Rack Back Angle at Maximum Height	91°
10 Ground Clearance	195 mm	7.7 in		

\*Operating Weight, Operating Specifications and Dimensions all based on 75 kg (165 lb) operator, all fluids, one speed, OROPS, 1730 mm (68 in) low profile bucket, **Cat 10 × 16.5 tires**, standard flow hydraulics, mechanical suspension seat, no optional counterweights and manual quick coupler (unless otherwise noted).

## Cab

ROPS	ISO 3471:2008
FOPS	ISO 3449:2005 Level I

## Service Refill Capacities

Chain Box, each side	8.8 L	2.3 gal
Cooling System	14 L	3.7 gal
Engine Crankcase	11 L	3.0 gal
Fuel Tank	94 L	24.8 gal
Hydraulic System	50 L	13.2 gal
Hydraulic Tank	39 L	10.3 gal

## Noise Level

Inside Cab**	83 dB(A)
Outside Cab***	101 dB(A)

- Cab and Rollover Protective Structures (ROPS) are standard in North America and Europe.

\*\*The declared dynamic operator sound pressure levels per ISO 6396:2008. The measurements were conducted with the cab doors and windows closed and at 70% of the maximum engine cooling fan speed. The sound level may vary at different engine cooling fan speeds.

\*\*\*The labeled sound power level for the CE marked configurations when measured according to the test procedure and conditions specified in 2000/14/EC.

## Air Conditioning System (if equipped)

The air conditioning system on this machine contains the fluorinated greenhouse gas refrigerant R134a (Global Warming Potential = 1430). The system contains 0.81 kg of refrigerant which has a CO<sub>2</sub> equivalent of 1.158 metric tonnes.

## MANDATORY EQUIPMENT

- Hydraulics, Standard or High Flow
- Quick Coupler, Mechanical or Powered
- Highly Visible Seat Belt, 50 mm (2 in) or 75 mm (3 in)
- EU Preparation Package
- Power Train: One Speed, One Speed with Speed Sensitive Ride Control, Two Speed or Two Speed with Speed Sensitive Ride Control
- Tires, 10 × 16.5 or 12 × 16.5

## PERFORMANCE PACKAGES

- Performance Package H1: *Standard Flow Hydraulics (No Self Level)*
- Performance Package H2: *Standard Flow Hydraulics, Dual Direction Electronic Self Level (Raise and Lower), Work Tool Return to Dig, Work Tool Positioner, and Electronic Snubbing (Raise and Lower)*
- Performance Package H3: *High Flow Hydraulics, Dual Direction Electronic Self Level (Raise and Lower), Work Tool Return to Dig, Work Tool Positioner, and Electronic Snubbing (Raise and Lower)*

## STANDARD EQUIPMENT

### ELECTRICAL

- 12 volt Electrical System
- 80 ampere Alternator
- Ignition Key Start/Stop Switch
- Lights: *Gauge Backlighting, Two Rear Tail Lights, Two Adjustable Front and Rear Halogen Lights, Dome Light*
- Backup Alarm
- Heavy Duty Battery, 850 CCA

### OPERATOR ENVIRONMENT

- Advanced Display with Rearview Camera: *Full Color, 127 mm (5 in) LCD screen; Advanced Multi-operator Security System; On-screen Adjustments for Implement Response, Hystat Response and Creep Control*
- Gauges: *Fuel Level, Hour Meter*
- Operator Warning System Indicators: *Air Filter Restriction, Alternator Output, Armrest Raised/Operator Out of Seat, Engine Coolant Temperature, Engine Oil Pressure, Glow Plug Activation, Hydraulic Filter Restriction, Hydraulic Oil Temperature, Parking Brake Engaged, Engine Emission System*
- Adjustable Vinyl Seat
- Fold In Ergonomic Contoured Armrest
- Control Interlock System, when operator leaves seat or armrest raised: *Hydraulic System Disables, Hydrostatic Transmission Disables, Parking Brake Engages*
- ROPS Cab, Open, Tilt Up
- FOPS, Level I
- Top and Rear Windows
- Floor Mat
- Interior Rearview Mirror
- 12 volt Electric Socket
- Horn
- Hand (Dial) Throttle, Electronic
- Adjustable Joystick Controls
- Anti-theft Security System with 6-button Keypad
- Storage Compartment with Netting

### COMFORT PACKAGES

- Open ROPS (C0): *Static Seat (No Foot Throttle, Headliner, Heater or Door)*
- Open ROPS (C1): *Foot Throttle, Headliner, Cup Holder, and choice of Seat (Mechanical Suspension or High Back, Heated, Air Ride Seat) (No Heater or Door)*
- Enclosed ROPS with Heater (C2): *Foot Throttle, Headliner, Heater and Defroster, Side Windows, Cup Holder, Radio Ready, choice of Seat (Mechanical Suspension or High Back, Heated, Air Ride Seat) and Door (Glass or Polycarbonate)*
- Enclosed ROPS with A/C (C3): *C2 + Air Conditioner*

### POWER TRAIN

- Cat C3.3B, Turbo Diesel Engine, Meeting Tier 4 Final and Stage V Emission Standards
- Air Cleaner, Dual Element, Radial Seal
- S-O-S<sup>SM</sup> Sampling Valve, Hydraulic Oil
- Filters, Cartridge-type, Hydraulic
- Filters, Canister-type, Fuel and Water Separator
- Radiator/Hydraulic Oil Cooler (side-by-side)
- Spring Applied, Hydraulically Released Parking Brakes
- Hydrostatic Transmission
- Four Wheel Chain Drive

### OTHER

- Engine Enclosure, Lockable
- Extended Life Antifreeze, -36° C (-33° F)
- Machine Tie Down Points (6)
- Support, Lift Arm
- Hydraulic Oil Level Sight Gauge
- Radiator Coolant Level Sight Gauge
- Radiator, Expansion Bottle
- Cat ToughGuard<sup>TM</sup> Hose
- Auxiliary, Hydraulics, Continuous Flow
- Heavy Duty, Flat Faced Quick Disconnects with Integrated Pressure Release
- Split D-Ring to Route Work Tool Hoses Along Side of Left Lift Arm
- Electrical Outlet, Beacon
- Belly Pan Cleanout
- Variable Speed Demand Fan
- Product Link<sup>TM</sup> PL240, Cellular

# 236D3 Skid Steer Loader

---

## OPTIONAL EQUIPMENT

---

- Hand-Foot Style Controls
- External Counterweights
- Beacon, Rotating
- Engine Block Heater – 120V
- Oil, Hydraulic, Cold Operation
- Paint, Custom
- Product Link PL641, Cellular
- Bluetooth® Radio with Microphone (AM/FM/Weather Band Receiver with USB and Auxiliary Input Jack)

For more complete information on Cat products, dealer services, and industry solutions, visit us on the web at [www.cat.com](http://www.cat.com)

© 2019 Caterpillar  
All rights reserved

Materials and specifications are subject to change without notice. Featured machines in photos may include additional equipment. See your Cat dealer for available options.

CAT, CATERPILLAR, LET'S DO THE WORK, their respective logos, "Caterpillar Yellow," the "Power Edge" and Cat "Modern Hex" trade dress as well as corporate and product identity used herein, are trademarks of Caterpillar and may not be used without permission.

AEHQ8207-01 (08-2019)  
Replaces AEHQ8207  
(Am North, EU, APD, ANZP)

