

FSA



Volvo Construction Equipment



John Edwards
Governmental Sales Manager
850-685-7055
jedwards@cowin.com

EC350E, EC380E

VOLVO EXCAVATORS 36-42 t / 78,940-92,760 lb 303 hp



Volvo EC350E, EC380E in detail.

Engine

The latest generation, Volvo engine Tier 4f emissions compliant diesel engine fully meets the demands of the latest, emissions regulations. Featuring Volvo Advanced Combustion Technology (V-ACT), it is designed to deliver superior performance and fuel efficiency. The engine uses precise, high pressure fuel injectors, turbo charger and air-to-air intercooler, and electronic engine controls to optimize machine performance.

Air Filter: 3-stage with pre-cleaner

Automatic Idling System: Reduces engine speed to idle when the levers and pedals are not activated resulting in less fuel consumption and low cab noise levels.

EC350E, EC380E

Engine Tier 4f	Volvo	D13J
Max power at	r/s / r/min	28 / 1 700
Net, ISO 9249/ SAE J1349	kW / hp	225 / 302
Gross, ISO 14396/ SAE J1995	kW / hp	226 / 303
Max torque at	Nm / r/min	1 692 / 1 275 lb. ft
No. of cylinders		6
Displacement	l	12.8 cu. in
Bore	mm	131 in
Stroke	mm	158 in

Electrical system

High-capacity electrical system that is well protected. Waterproof double-lock harness plugs are used to secure corrosion-free connections. The main relays and solenoid valves are shielded to prevent damage. The master switch is standard. Contronics provides advanced monitoring of machine functions and important diagnostic information.

Voltage	V	24
Batteries	V	2 x 12
Battery capacity	Ah	200
Alternator	V / Ah	28 / 80

Swing system

The swing system uses an axial piston motors, driving a planetary gearbox for maximum torque. An automatic holding brake and anti-rebound valve are standard.

EC350E

Max. slew speed	r/min	10.2
Max. slew torque	kNm	119 lbf. ft

EC380E

Max. slew speed	r/min	10.2
Max. slew torque	kNm	130.5 lbf. ft

Drive

Each track is powered by an automatic two-speed shift travel motor. The track brakes are multi-disc, spring-applied and hydraulic released. The travel motor, brake and planetary gears are well protected within the track frame.

EC350E, EC380E

Max. drawbar pull	kN	276.5 lb
Max. travel speed	km/h	3.4/5.3 mph
Gradeability	°	35

Undercarriage

The undercarriage has a robust X-shaped frame. Greased and sealed track chains are standard.

EC350E

Track pads			2 x 48
Link pitch	mm	215.9	in 8.5
Shoe width, triple grouser	mm	600/700/800/900	in 24/28/32/36
Shoe width, double grouser	mm	600	in 24
Bottom rollers			2 x 8
Top rollers			2 x 2

EC380E

Track pads			2 x 50
Link pitch	mm	215.9	in 8.5
Shoe width, triple grouser	mm	600/600HD/700/800/900	in 24/24HD/28/32/36
Shoe width, double grouser	mm	600	in 24
Bottom rollers			2 x 9
Top rollers			2 x 2

Hydraulic system

The new electrohydraulic system and new MCV (main control valve) use intelligent technology to control on-demand flow for high-productivity, high-digging capacity and excellent fuel consumption.

The following important functions are included in the system for optimum performance:

Summation system: Combines the flow of both hydraulic pumps to ensure quick cycle times and high productivity.

Boom priority: Gives priority to the boom operation for faster raising when loading or performing deep excavations.

Arm priority: Gives priority to the arm operation for faster cycle times in leveling and for increased bucket filling when digging.

Swing priority: Gives priority to swing functions for faster simultaneous operations.

Regeneration system: Prevents cavitation and provides flow to other movements during simultaneous operations for maximum productivity.

Power boost: All digging and lifting forces are increased.

Holding valves: Boom and arm holding valves prevent the digging equipment from creeping.

EC350E

Main pump, Type 2 x variable displacement axial piston pumps			
Maximum flow	l/min	2 x 300	gpm 2 x 79
Pilot pump, Type Gear pump			
Maximum flow	l/min	32.6	gpm 8.6

EC380E

Main pump, Type 2 x variable displacement axial piston pumps			
Maximum flow	l/min	2 x 300	gpm 2 x 79
Pilot pump, Type Gear pump			
Maximum flow	l/min	32.6	gpm 8.6

Hydraulic motors

Travel: Variable displacement axial piston motor with mechanical brake

Slew: Fixed displacement axial piston motor with mechanical brake

Relief valve setting

EC350E

Implement	MPa	32.4/35.3	psi	4,690/5,120
Travel circuit	MPa	35.3	psi	5,120
Slew circuit	MPa	25.5	psi	3,700
Pilot circuit	MPa	3.9	psi	570

EC380E

Implement	MPa	32.4/35.3	psi	4,690/5,120
Travel circuit	MPa	35.3	psi	5,120
Slew circuit	MPa	27.9	psi	4,050
Pilot circuit	MPa	3.9	psi	570

Hydraulic cylinders

EC350E

Mono boom				2
Bore x Stroke	ø x mm	160 x 1 530	ø x in	6.3 x 60.2
Arm		1		1
Bore x Stroke	ø x mm	175 x 1 700	ø x in	6.9 x 66.9
Bucket		1		1
Bore x Stroke	ø x mm	145 x 1 285	ø x in	5.7 x 50.6
ME Bucket		1		1
Bore x Stroke	ø x mm	160 x 1 250	ø x in	6.3 x 49.2
Service refill capacities				
Fuel tank	l	620	gal	164
Hydraulic system, total	l	500	gal	132
Hydraulic tank	l	225	gal	59
Engine oil	l	42	gal	11
Engine coolant	l	60	gal	16
Slew reduction unit	l	6	gal	1.6
Travel reduction unit	l	2 x 6.8	gal	2 x 1.8

EC380E

Mono boom				2
Bore x Stroke	ø x mm	160 x 1 530	ø x in	6.3 x 60.2
Arm		1		1
Bore x Stroke	ø x mm	175 x 1 700	ø x in	6.9 x 66.9
Bucket		1		1
Bore x Stroke	ø x mm	145 x 1 285	ø x in	5.7 x 50.6
ME Bucket		1		1
Bore x Stroke	ø x mm	160 x 1 250	ø x in	6.3 x 49.2
LR Bucket		1		1
Bore x Stroke	ø x mm	140 x 1 140	ø x in	5.5 x 44.9
Service refill capacities				
Fuel tank	l	620	gal	164
Hydraulic system, total	l	500	gal	132
Hydraulic tank	l	225	gal	59
Engine oil	l	42	gal	11
Engine coolant	l	60	gal	16
Slew reduction unit	l	6.5	gal	1.7
Travel reduction unit	l	2 x 6.8	gal	2 x 1.8

Cab

The operator's cab has easy access via a wide door opening. The cab is supported on hydraulic dampening mounts to reduce shock and vibration levels. These along with sound absorbing lining provide low noise levels. The cab has excellent all-round visibility. The front windshield can easily slide up into the ceiling, and the lower front glass can be removed and stored in the side door.

Integrated air-conditioning and heating system:

The pressurized and filtered cab air is supplied by an automatically-controlled fan. The air is distributed throughout the cab from 14 vents.

Ergonomic operator's seat: The adjustable seat and joystick console move independently to accommodate the operator. The seat has 12 different adjustments plus a seat belt for the operator's comfort and safety.

Sound Level

Sound level in cab according to ISO 6396

EC350E, EC380E

LpA	dB(A)	71
-----	-------	----

External sound level according to ISO 6395 and

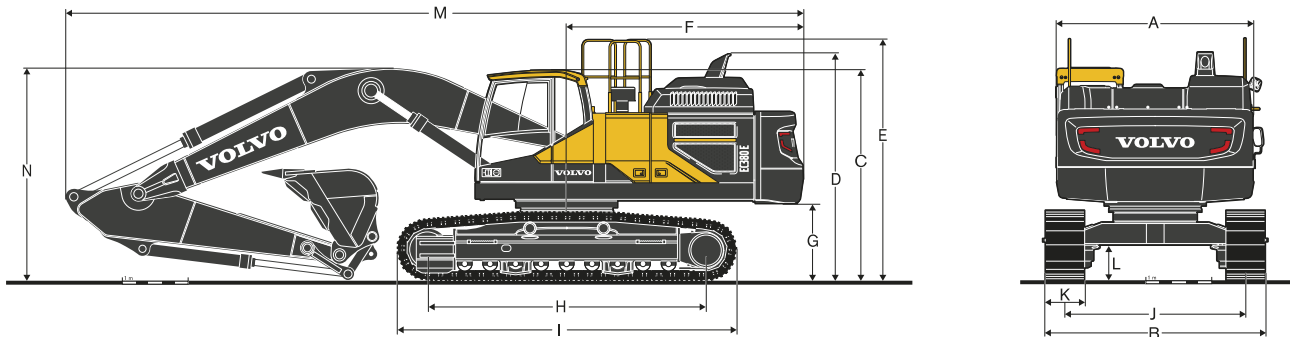
EU Noise Directive (2000/14/EC) and 474-1:2006 +A1:2009

EC350E, EC380E

LwA	dB(A)	105
-----	-------	-----

Specifications.

DIMENSIONS



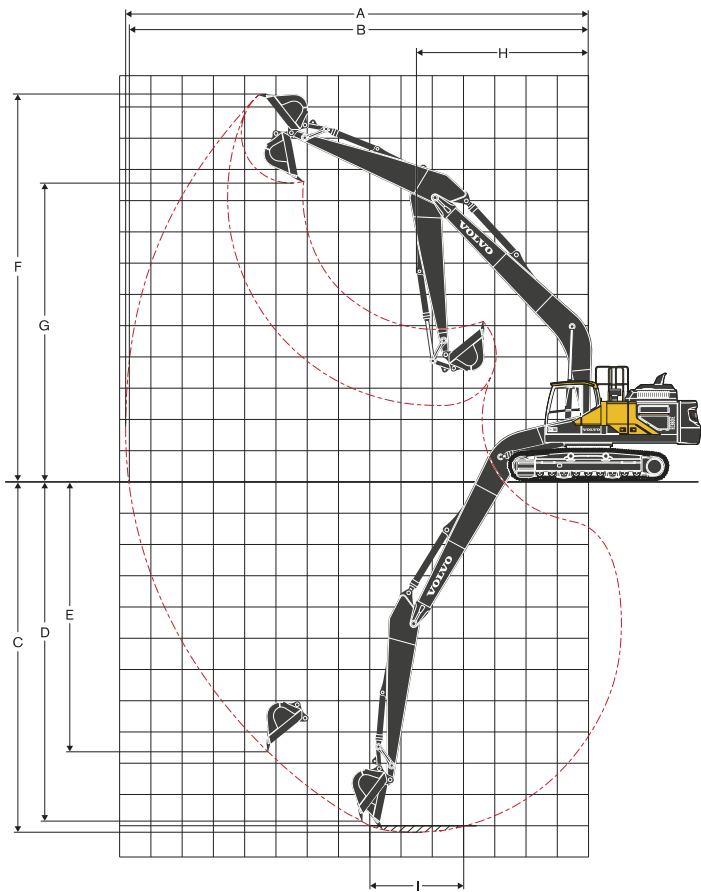
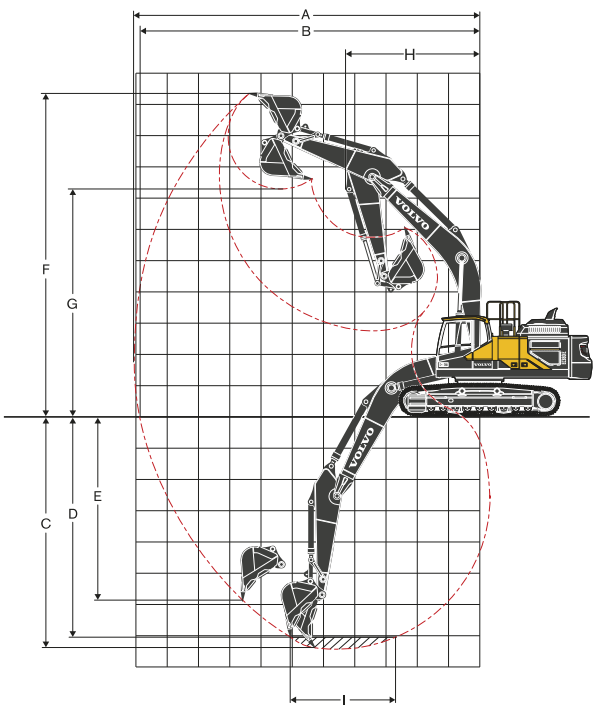
Description	Unit		EC350EL							
Boom			6.2 m, 20' 4" ft in		6.45 m, 21' 2" ft in					
Arm	m	in	2.6	8' 6"	2.6	8' 6"	3.2	10' 6"	3.9	12' 10"
A. Overall width of upper structure	mm	in	2 990	9' 10"	2 990	9' 10"	2 990	9' 10"	2 990	9' 10"
B. Overall width	mm	in	3 390	11' 1"	3 390	11' 1"	3 390	11' 1"	3 390	11' 1"
C. Overall height of cab	mm	in	3 231	10' 7"	3 231	10' 7"	3 231	10' 7"	3 231	10' 7"
D. Overall height of diffuser	mm	in	3 475	11' 5"	3 475	11' 5"	3 475	11' 5"	3 475	11' 5"
E. Overall height of guardrail	mm	in	3 696	12' 2"	3 696	12' 2"	3 696	12' 2"	3 696	12' 2"
F. Tail swing radius	mm	in	3 600	11' 10"	3 600	11' 10"	3 600	11' 10"	3 600	11' 10"
G. Counterweight clearance *	mm	in	1 161	3' 10"	1 161	3' 10"	1 161	3' 10"	1 161	3' 10"
H. Tumbler length	mm	in	4 020	13' 2"	4 020	13' 2"	4 020	13' 2"	4 020	13' 2"
I. Track length	mm	in	4 957	16' 3"	4 957	16' 3"	4 957	16' 3"	4 957	16' 3"
J. Track gauge	mm	in	2 590	8' 6"	2 590	8' 6"	2 590	8' 6"	2 590	8' 6"
K. Shoe width	mm	in	800	31"	800	31"	800	31"	800	31"
L. Min. ground clearance *	mm	in	500	1' 8"	500	1' 8"	500	1' 8"	500	1' 8"
M. Overall length	mm	in	11 052	36' 3"	11 312	37' 1"	11 226	36' 10"	11 269	37' 0"
N. Overall height of boom	mm	in	3 756	12' 4"	3 603	11' 10"	3 352	11'	3 596	11' 10"

Description	Unit		EC380EL								EC380ELR	
Boom			6.2 m, 20' 4" ft in		6.45 m, 21' 2" ft in						8.5 m, 27' 11" ft in	
Arm	m	in	2.6	8' 6"	2.6	8' 6"	3.2	10' 6"	3.9	12' 10"	5	16' 5"
A. Overall width of upper structure	mm	in	2 990	9' 10"	2 990	9' 10"	2 990	9' 10"	2 990	9' 10"	2 990	9' 10"
B. Overall width	mm	in	3 540	11' 7"	3 540	11' 7"	3 540	11' 7"	3 540	11' 7"	3 540	11' 7"
C. Overall height of cab	mm	in	3 220	10' 7"	3 220	10' 7"	3 220	10' 7"	3 220	10' 7"	3 220	10' 7"
D. Overall height of diffuser	mm	in	3 470	11' 5"	3 470	11' 5"	3 470	11' 5"	3 470	11' 5"	3 470	11' 5"
E. Overall height of guardrail	mm	in	3 685	12' 1"	3 685	12' 1"	3 685	12' 1"	3 685	12' 1"	3 685	12' 1"
F. Tail swing radius	mm	in	3 600	11' 10"	3 600	11' 10"	3 600	11' 10"	3 600	11' 10"	3 600	11' 10"
G. Counterweight clearance *	mm	in	1 155	3' 9"	1 155	3' 9"	1 155	3' 9"	1 155	3' 9"	1 155	3' 9"
H. Tumbler length	mm	in	4 240	13' 11"	4 240	13' 11"	4 240	13' 11"	4 240	13' 11"	4 240	13' 11"
I. Track length	mm	in	5 180	17' 0"	5 180	17' 0"	5 180	17' 0"	5 180	17' 0"	5 180	17' 0"
J. Track gauge	mm	in	2 740	9' 0"	2 740	9' 0"	2 740	9' 0"	2 740	9' 0"	2 740	9' 0"
K. Shoe width	mm	in	800	32"	800	32"	800	32"	800	32"	800	32"
L. Min. ground clearance *	mm	in	500	1' 8"	500	1' 8"	500	1' 8"	500	1' 8"	500	1' 8"
M. Overall length	mm	in	11 060	36' 3"	11 310	37' 1"	11 225	36' 10"	11 270	37' 0"	13 065	42' 10"
N. Overall height of boom	mm	in	3 510	11' 6"	3 455	11' 4"	3 275	10' 9"	3 485	11' 5"	4 500	14' 9"

*Without shoe grouser

Specifications.

WORK RANGES



WORK RANGES

Description	Unit	EC350E							
Boom		6.2 m, 20' 4" ft in				6.45 m, 21' 2" ft in			
Arm	m ft in	2.6	8' 6"	2.6	8' 6"	3.2	10' 6"	3.9	12' 10"
A. Max. digging reach	mm ft in	10 450	34' 3"	10 700	35' 1"	11 220	36' 10"	11 860	38' 11"
B. Max. digging reach on ground	mm ft in	10 225	33' 7"	10 480	34' 5"	11 010	36' 2"	11 665	38' 3"
C. Max. digging depth	mm ft in	6 750	22' 2"	6 985	22' 11"	7 585	24' 11"	8 285	27' 2"
D. Max. digging depth (2,44 m/8' level)	mm ft in	6 570	21' 7"	6 800	22' 4"	7 420	24' 4"	8 140	26' 9"
E. Max. vertical wall digging depth	mm ft in	4 855	15' 11"	5 080	16' 8"	5 510	18' 1"	6 300	20' 8"
F. Max. cutting height	mm ft in	10 065	33' 0"	10 215	33' 6"	10 380	34' 1"	10 680	35' 0"
G. Max. dumping height	mm ft in	6 805	22' 4"	6 955	22' 10"	7 145	23' 5"	7 420	24' 4"
H. Min. front slew radius	mm ft in	4 115	13' 6"	4 315	14' 2"	4 275	14' 0"	4 235	13' 11"

Digging forces with direct fit bucket

Bucket radius	mm ft in	1 810	5' 11"	1 623	5' 4"	1 623	5' 4"	1 623	5' 4"
Breakout force - bucket (Normal/Power boost)	SAE J1179	kN lb	214.5 48,220	198.0	44,510	198.0	44,510	198.0	44,510
	ISO 6015	kN lb	234.5 52,720	215.0	48,335	215.0	48,335	215.0	48,335
	ISO 6015	kN lb	243.4 54,720	221.7	49,840	221.7	49,840	221.7	49,840
	ISO 6015	kN lb	265.4 59,665	242.7	54,560	242.7	54,560	242.7	54,560
Tearout force - dipper arm (Normal/Power boost)	SAE J1179	kN lb	187.7 42,195	195.9	44,040	161.9	36,395	141.3	31,765
	SAE J1179	kN lb	205.7 46,245	212.9	47,860	176.9	39,770	154.3	34,690
	ISO 6015	kN lb	193.9 43,590	201.1	45,210	166.0	37,320	144.4	32,460
	ISO 6015	kN lb	211.9 47,635	219.1	49,255	181.0	40,690	157.4	35,385
Rotation angle, bucket	°	164		177		177		177	

Description	Unit	EC380E							
Boom		6.2 m, 20' 4" ft in				6.45 m, 21' 2" ft in			
Arm	m ft in	2.6	8' 6"	2.6	8' 6"	3.2	10' 6"	3.9	12' 10"
A. Max. digging reach	mm ft in	10 300	33' 9"	10 545	34' 7"	11 070	36' 4"	11 700	38' 5"
B. Max. digging reach on ground	mm ft in	10 075	33' 1"	10 325	33' 11"	10 860	35' 7"	11 500	37' 9"
C. Max. digging depth	mm ft in	6 540	21' 6"	6 785	22' 3"	7 390	24' 3"	8 085	26' 6"
D. Max. digging depth (2,44 m/8' level)	mm ft in	6 180	20' 3"	6 430	21' 1"	7 060	23' 2"	7 735	25' 4"
E. Max. vertical wall digging depth	mm ft in	5 275	17' 4"	5 430	17' 10"	5 875	19' 3"	6 675	21' 11"
F. Max. cutting height	mm ft in	10 035	32' 11"	10 170	33' 4"	10 340	33' 11"	10 635	34' 11"
G. Max. dumping height	mm ft in	6 945	22' 9"	7 095	23' 3"	7 285	23' 11"	7 560	24' 10"
H. Min. front slew radius	mm ft in	4 115	13' 6"	4 315	14' 2"	4 275	14' 0"	4 240	13' 11"

Digging forces with direct fit bucket

Bucket radius	mm ft in	1 810	5' 11"	1 623	5' 4"	1 623	5' 4"	1 623	5' 4"
Breakout force - bucket (Normal/Power boost)	SAE J1179	kN lb	214.5 48,220	198.0	44,510	198.0	44,510	198.0	44,510
	ISO 6015	kN lb	234.5 52,720	215.0	48,335	215.0	48,335	215.0	48,335
	ISO 6015	kN lb	243.4 54,720	221.7	49,840	221.7	49,840	221.7	49,840
	ISO 6015	kN lb	265.4 59,665	242.7	54,560	242.7	54,560	242.7	54,560
Tearout force - dipper arm (Normal/Power boost)	SAE J1179	kN lb	187.7 42,195	195.9	44,040	161.9	36,395	141.3	31,765
	SAE J1179	kN lb	205.7 46,245	212.9	47,860	176.9	39,770	154.3	34,690
	ISO 6015	kN lb	193.9 43,590	201.1	45,210	166.0	37,320	144.4	32,460
	ISO 6015	kN lb	211.9 47,635	219.1	49,255	181.0	40,690	157.4	35,385
Rotation angle, bucket	°	164		177		177		177	

Equipment.

STANDARD EQUIPMENT

	EC350E	EC380E
Engine		
Turbocharged, 4 stroke diesel engine with water cooling, direct injection and charged air cooler that meets Tier 4f requirements	•	•
Air filter with indicator	•	•
Air intake heater	•	•
Cyclone pre-cleaner	•	•
Electric engine shut-off	•	•
Fuel filter and water separator	•	•
Alternator, 80 A	•	•
Electric/Electronic control system		
Contronics		
Advanced mode control system	•	•
Self-diagnostic system	•	•
Machine status indication with audible alarms	•	•
Engine speed sensing power control	•	•
Automatic idling system	•	•
One-touch power boost	•	•
Safety stop/start function	•	•
Adjustable 8 inch LCD color monitor	•	•
Master electrical disconnect switch	•	•
Engine restart prevention circuit	•	•
High-capacity halogen lights:		
Frame-mounted 2	•	•
Boom-mounted 2	•	•
Batteries, 2 x 12 V / 200 Ah	•	•
Start motor, 24 V / 7 kW	•	•
Travel alarm	•	•
Hydraulic system		
Boom float without hose rupture valves	•	•
Overload warning device	•	•
Automatic sensing hydraulic system		
2-pump flow bucket circuit	•	•
Summation system	•	•
Boom priority	•	•
Arm priority	•	•
Swing priority	•	•
Boom, arm and bucket regeneration valves	•	•
Swing anti-rebound valves	•	•
Boom and arm holding valves	•	•
Multi-stage filtering system	•	•
Cylinder cushioning	•	•
Cylinder contamination seals	•	•
Auxiliary hydraulic valve	•	•
Automatic two-speed travel motors	•	•
Hydraulic oil, longlife oil 46	•	•
Frame		
Access way with handrail	•	•
Tool storage area	•	•
Punched metal anti-slip plates	•	•
Undercover (heavy-duty)	•	•
Cab and interior		
ROPS (ISO12117-2) certified cab	•	•
Silicon oil and rubber mounts with spring	•	•
Travel pedals and hand levers	•	•
Adjustable operator seat and joystick control console	•	•
Control joysticks with 4 switches each	•	•
Heater & air-conditioner, automatic	•	•
Flexible antenna	•	•
AM/FM stereo with MP3, USB and bluetooth input	•	•
Hydraulic safety lock lever	•	•

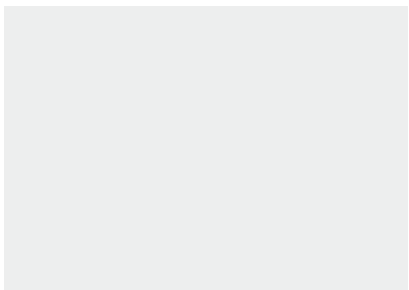
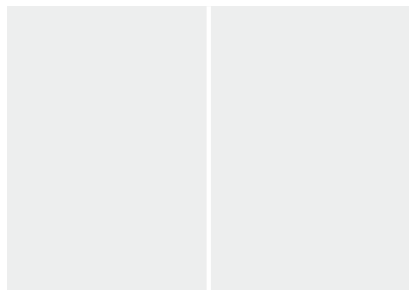
	EC350E	EC380E
Cab and interior		
Cab, all-weather sound suppressed, includes:		
Cup holders	•	•
Door locks	•	•
Tinted glass	•	•
Floor mat	•	•
Horn	•	•
Large storage area	•	•
Pull-up type front window	•	•
Removable lower windshield	•	•
Seat belt	•	•
Safety glass	•	•
Sun screens, front, roof, rear	•	•
Windshield wiper with intermittent feature	•	•
Rear view camera	•	•
Master key	•	•
Undercarriage		
Undercover (heavy-duty)	•	•
Hydraulic track adjusters	•	•
Greased and sealed track link	•	•
Track Guard	•	•
Track shoes		
800 mm (32") with triple grousers	•	•
Digging equipment		
Boom:		
6.45 m (21' 2") GP	•	•
6.45 m (21' 2") HD	•	•
Arm:		
3.2 m (10' 6") GP	•	•
3.2 m (10' 6") HD	•	•
Manual centralized lubrication	•	•
Pilot control pattern change	•	•
Opening top hatch	•	•

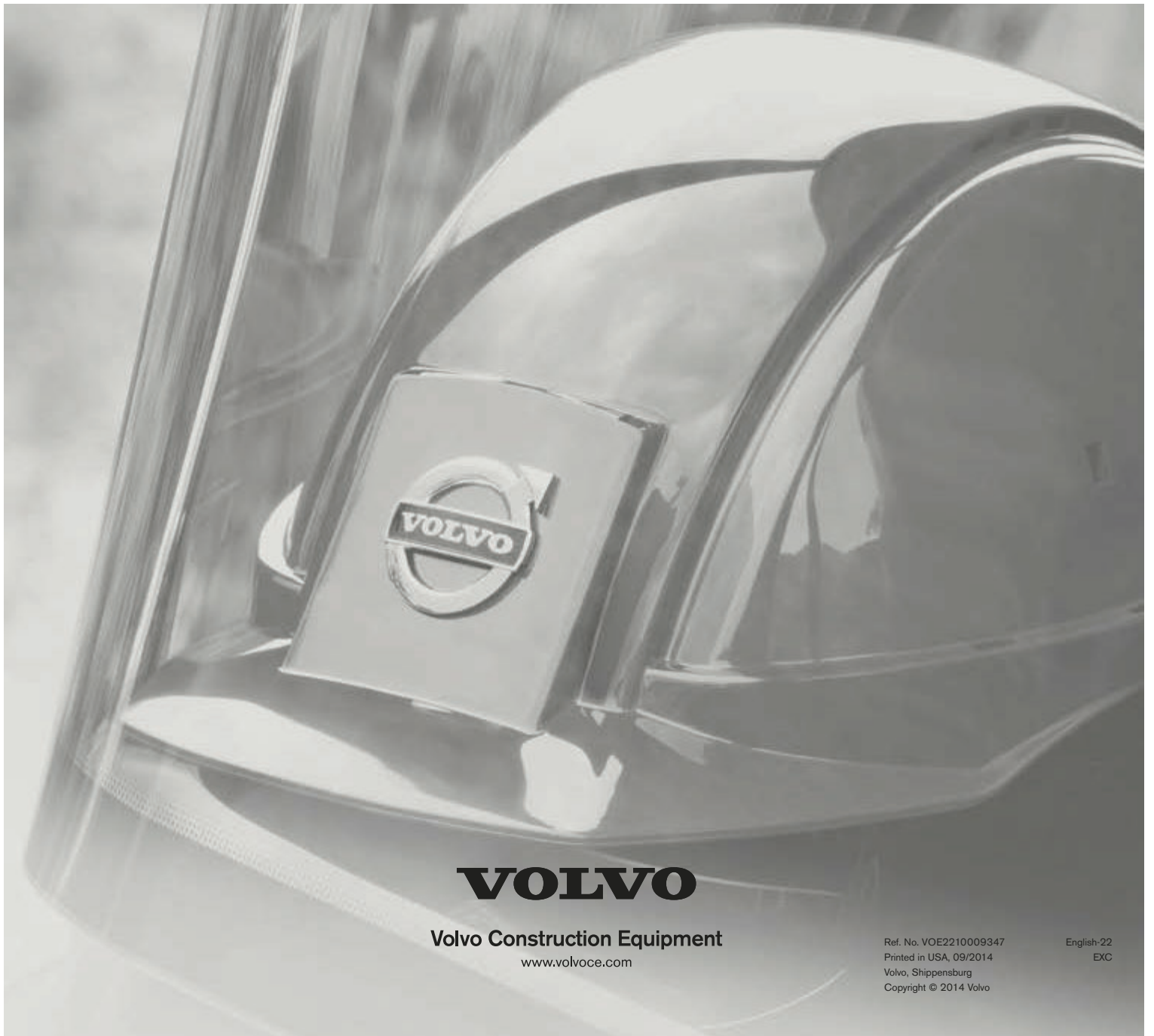
OPTIONAL EQUIPMENT

	EC350E	EC380E
Engine		
Block heater: 120 V	•	•
Oil bath pre-cleaner	•	•
Diesel coolant heater, 10 kW	•	•
Water separator with heater	•	•
Auto engine shutdown	•	•
Fuel filler pump: 50 l/min (13.2 gal/min), with automatic shut-off	•	•
Electric		
Extra work lights: Halogen/LED		
Cab-mounted 3	•	•
Boom-mounted 2	•	•
Counterweight-mounted 1	•	•
Anti-theft system	•	•
Rotating warning beacon	•	•
Hydraulic system		
Hose rupture valve: arm	•	•
Hose rupture valve: boom	•	•
Boom float function	•	•
Hydraulic piping:		
Work tool management system (up to 20 programmable memories)	•	•
Breaker & shear, 1 or 2 pump flow	•	•
Breaker & shear:	•	•
variable flow and pressure pre-setting	•	•
Additional return filter	•	•
Slope & rotator	•	•
Grapple	•	•
Oil drain line	•	•
Quick coupler piping	•	•

OPTIONAL EQUIPMENT		
	EC350E	EC380E
Hydraulic system		
Volvo hydraulic quick coupler S3	•	•
Volvo hydraulic quick coupler	•	•
VQC-HU,DR38		
Hydraulic oil, biodegradable 46	•	•
Hydraulic oil, longlife oil 32	•	•
Hydraulic oil, longlife oil 68	•	•
Counterweight		
6 200 kg (13,670 lb)	•	•
6 700 kg (14,770 lb)	•	•
7 250 kg (15,990 lb)		•
8 200 kg (18,080 lb) for long reach		•
Cab and interior		
Fabric seat with heater and air suspension	•	•
Falling object guard (FOG)	•	•
Frame-mounted	•	•
Cab-mounted	•	•
Cab-mounted falling object protective structure (FOPS)	•	•
Smoker kit (ashtray and lighter)	•	•
Safety net for front window	•	•
Lower wiper with intermittent control	•	•
Anti-vandalism kit	•	•
Rain shield	•	•

	EC350E	EC380E
Undercarriage		
Full track guard	•	•
Track shoes		
Track shoes 600/700/900 mm (24/28/36") with triple grousers	•	•
Track shoes 600 mm (24") HD with triple grousers		•
Track shoes 600 mm (24") with double grousers	•	•
Track shoes 750 mm (30") with single grousers	•	
Digging equipment		
Boom:		
6.2 m (20' 4") ME	•	•
8.5 m (27' 11") LR		•
Arm:		
2.6 m (8' 6") ME	•	•
3.9 m (12' 10") GP	•	
3.9 m (12' 10") HD		•
5.0 m (16' 5") LR		•
Linkage with lifting eye	•	•
Service		
Tool kit, daily maintenance	•	•
Tool kit, full scale	•	•
Automatic lubrication system	•	•
Cleaner kit, air blow gun	•	•





VOLVO

Volvo Construction Equipment
www.volvoce.com

Ref. No. VOE2210009347
Printed in USA, 09/2014
Volvo, Shippensburg
Copyright © 2014 Volvo

English-22
EXC

Description	Article
Volvo EC350EL Crawler Excavator	EC350EL
Boom, 21' 2" (6.45m), GP	XC10133
Arm, 10' 6" (3.2m), GP	XC10211
Linkage with lifting eye, GP	XC10403
Decal Kit NA	XC10503
Track Pads, 32" Triple Grouser	XC20106
Roller guard STD	XC20201
Lower frame - foldable steps	XC20302
Belly Cover HD, 10mm	XC20402
Engine NA	XC30101
Standard fan drive	XC30801
Air precleaner, Cyclone	XC30401
Anti-vandal mounting brackets on cab	XC40112
CareCab Reinforced w/ Opening Hatch	XC40105
Seat, Air suspension w/Heater & X-Isolator	XC40203
Seat Belt, 3 inch Retractable	XC41204
Air conditioning, ACC (automatic climate control)	XC40502
Universal key	XC40602
Radio with MP3, USB port & Bluetooth	XC40708
Guardrail	XC50801
Work lights on deck & boom, Halogen	XC50000
Extra work lights on cab front/rear, CWT, boom & RH side,	XC50101
Travel alarm	XC50102
Battery switch protector	XC50132
Volvo Smart View on Instrument Cluster only	XC50144
Dig Assist Start	XC50155
CareTrack, GSM/Satellite	XC50402
CareTrack Connectivity 4 yr Subscription	XC50404
De-activate SAT	XC50406
Hydraulic oil ISO VG46	XC60102
Pre-setting for hyd. pressure (piping not installed for long	XC61301
X1 2 pump double acting piping (piping not installed for long	XC60203
X1 additional return filter (piping not installed for long reach	XC60301
X1 2-switch control, On/Off, double acting (piping not	XC60502
X1 Pedal control, Proportional (piping not installed for long	XC60605
Quick fit piping, UQF (piping not installed for long reach	XC60805
Pilot control pattern change	XC60901
Straight travel pedal	XC60904
Boom float function, w/o hose rupture valve	XC60907
Manual, English	XC70302
Counterweight, 14,770lbs (6700kg), fabrication	XC80161
Under cover HD, 4.5mm superstructure	XC80202
Frame lifetime guarantee	XC70501
Less Bucket With Pins	XC8281913
41" Pin-on GP (V4) bucket, 1.54 yd, 4 55GPE teeth, bolt-on	XC8293942



Volvo Construction Equipment North America
Warranty – Disclaimers – Limitations
Limited Warranty for Governmental / Municipalities

Volvo Construction Equipment North America (“Volvo CE”) hereby extends to its authorized dealers (“Dealer”) and the Dealer’s Governmental / Municipalities customers (“Customer”, and both Dealer and Customer are referred to herein as a “Buyer”), who purchase a new Volvo construction equipment machine (“Machine”) or new Volvo part (“Part”, both of which are referred to herein as a “Product”) from Volvo, the following limited warranty:

Subject to the exceptions and limitations set forth below, Volvo CE or Dealer will repair or replace any part of a new Machine or new Part which proves to be defective in material or workmanship during the following periods (the “Warranty Period”):

- Volvo wheel loaders: 12 months/2500 hours, whichever first occurs
- Volvo articulated haulers: 12 months/2500 hours, whichever first occurs
- Volvo hydraulic excavators: 12 months/2500 hours, whichever first occurs
- Volvo motor graders: 12 months/2500 hours, whichever first occurs
- Volvo compactors: 12 months/1500 hours, whichever first occurs
24 months unlimited hours on DD90 and larger compactors
- Volvo pavers: 12 months/1500 hours, whichever first occurs
24 months unlimited hours on 6000 / 7000 series pavers
- Volvo milling: 12 months/1500 hours, whichever first occurs
- Volvo compact wheel loaders (up to 100 net hp.): 12 months/unlimited hours
- Volvo skid steer loaders: 12 months/unlimited hours; Lifetime arm for one-sided
- Volvo compact hydraulic excavators (less than 11 metric tons): 12 months/unlimited hours
- Volvo backhoe loaders: 12 months/unlimited hours
- Volvo engines: 12 months/2500 hours, whichever first occurs
- Volvo parts: 6 months/1500 hours, whichever first occurs
- Volvo remanufactured components: 12 months/2500 hours, whichever first occurs
- Volvo Attachments: 12 months

The Warranty Period commences immediately following the delivery of said Product to the Buyer who first puts said Product into use. The foregoing limited warranty shall include the labor cost to accomplish the repair or replacement of the defective part provided that the repair or replacement was performed by a Dealer.

The foregoing warranty does not cover: (i) any Product found to have been damaged by abuse, accident, other casualty or a failure to maintain or use the warranted Product in accordance with the applicable manuals or instructions (Buyer is required to use only original equipment manufacturer filters during the Warranty Period); (ii) the labor costs to repair or replace defective Parts after the expiration of the Warranty Period of the Machine in which such Part is located; (iii) overtime labor premiums; (iv) costs and expenses associated with the transportation of Dealer’s service personnel to and from the location of the warranted Product; (v) any parts, components, attachments or accessories for which Buyer receives a separate warranty by the manufacturer or producer thereof (in specified cases said warranty may be administered by Volvo CE); (vi) maintenance items or ground engaging parts that have achieved their normal service life.

DISCLAIMER OF IMPLIED WARRANTIES AND LIMITATION OF REMEDIES

THE FOREGOING WARRANTY TO BUYER IS EXCLUSIVE AND IS IN LIEU OF ALL OTHER WARRANTIES, EXPRESSED OR IMPLIED, AND THERE IS NO IMPLIED WARRANTY OF MERCHANTABILITY OR FITNESS FOR A PARTICULAR PURPOSE.

REMEDIES AVAILABLE TO BUYER ARE LIMITED TO MAKING A CLAIM UNDER THE FOREGOING WARRANTY AND ARE EXCLUSIVE AND EXPRESSLY LIMITED TO OBTAINING THE PARTS AND LABOR IN ACCORDANCE WITH THE TERMS OF SAID WARRANTY.

Warranty – Disclaimers – Limitations

LIMITATIONS OF LIABILITY AND DAMAGES

Regardless of whether a claim against Volvo CE or Dealer is based on the foregoing warranty or is an action in contract, tort (negligence or strict liability) or otherwise, their respective liability for losses, damages or expenses of any kind arising from the design, manufacture, repair or sale of the Products is limited, unless otherwise prohibited by law, to an amount not exceeding the cost performing the obligations contained in the foregoing warranty, and in no event shall their respective or joint liability exceed the value of the Product or part thereof giving rise to such liability.

CONSEQUENTIAL AND SIMILAR DAMAGES NOT RECOVERABLE

Except for performing the obligations of the foregoing warranty in accordance with its terms, Volvo CE and Dealer shall have no liability for loss, damage, or expense, directly or indirectly, attributable to a loss of use of a Product, loss or damage to property other than the Product, loss or damage to the Product or any part thereof or any other economic or commercial loss, including, without limitation, lost profits or special or consequential damages (except liability for any type of consequential damages which by law may not be disclaimed). The parties intend that this prohibition against consequential and similar damages will survive and be effective even if the limitation of remedies in the foregoing sections is found to fail of its essential purpose under section 2-719 of the Uniform Commercial Code.

ALLOCATION OF RISK

The foregoing warranty disclaimers, limitations of liability and limitation of remedies are bargained allocations of risks among (i) the Customer who purchased the Product; (ii) the Dealer who sold the Product, and (iii) Volvo CE, which is a third party beneficiary of the contract of sale between the Customer and the Dealer. The Buyer of the Product accepts the foregoing warranty and the other bargained for allocations of risk as part of the agreed price for the purchase of the Product to which the foregoing warranty applies. Volvo CE is prepared to offer different warranties and other allocations of risk for other prices. However, any such change in the warranty or the allocation of risks must be confirmed in writing by Volvo CE.

STATUTE OF LIMITATIONS

Any action by a Buyer of a Product for breach of contract, for breach of warranty arising under, or for a cause of action arising out of the sale of a Product, whether based on contract, tort (negligence or strict liability) or otherwise, shall be commenced within one (1) year after the cause of action has accrued. Any such cause of action shall be deemed to have accrued at the earlier of (i) the discovery of the defect or breach, or (ii) the expiration of the applicable Warranty Period.