

6GST SAE MOUNT

GLOBAL STANDARD TRASH



Global Pump® Standard Trash pumps are specifically designed to effectively handle a wide range of liquids from water to sewage and sludge that can contain solids and other material.

The model 6GST SAE Mount is capable of achieving maximum flows of 3,000 gpm (681 m³/h) and maximum total head of 202’ (61.6 m), while handling solids up to 3” (75 mm) in diameter. L³/D⁴ ratio of the pump is 7.2.

The standard 6GST SAE Mount is SAE flange mounted to a water-cooled, 4-cylinder diesel engine. Alternative drives are available including electric motors.

Global Pump's unique front pullout cartridge seal provides ease of maintenance as it can be quickly changed in the field, thereby reducing downtime and expense.

FEATURES

Global Pump’s rugged, heavy duty pumps are engineered specifically for portable application

Close coupled SAE mount to engine

Industry-best shaft stiffness with extremely low L³/D⁴ ratio that provides minimal shaft deflection, extended seal life and L10 100,000 hour bearing life

Non-return valve uses only a single moving part to allow full flow with minimal restriction

Standard engine control panel provides preset emergency shutdown protection and allows the addition of automatic level control

Global Pump’s unique cartridge seal with biodegradable glycol quench allows the pump to start and run dry

Pump casings are hydrostatically tested to 50 psig (345 kPa) above the peak casing design pressure

Skid-mounted formats with tie downs, lifting bail, and fork pockets

OPTIONS

Available with a variety of priming systems, including Global’s Auto Prime® automatic priming system (compressor-fed venturi priming) or a diaphragm priming system

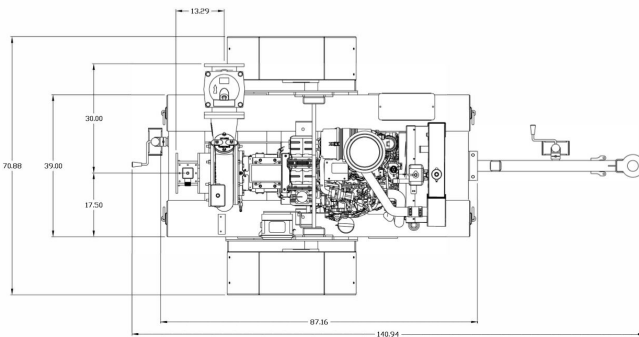
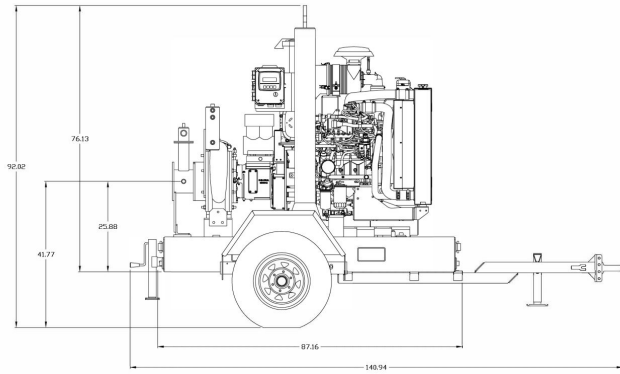
Global Pump’s environmental box separates and silences air exhaust and returns liquid to the pump suction

Fuel cubes for extended run times and/or remote location as required

Sound attenuated enclosure options

Hose racks, accessory containers and other custom features available as required

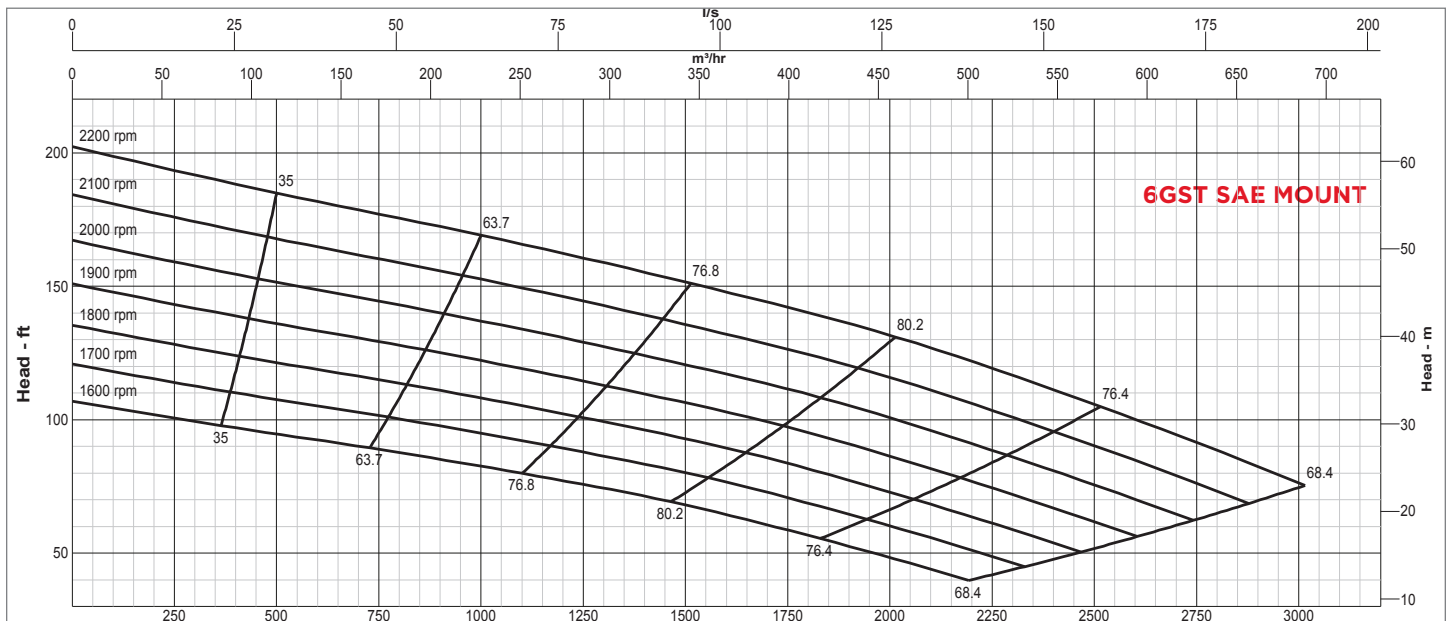
Wide range of suction and discharge fittings including Global Pump’s own “QD” Quick Disconnect fittings and accessories

**SPECIFICATIONS**

Connections	6" (150 mm) ANSI Flanges
Max Pump Speed	2,200 rpm
Max Flow	3,000 gpm (681 m ³ /h)
Max Head	202' (61.6 m)
Max Static Priming Lift	28' (8.5 m)
Temperature Limit	160° F (70° C)
Solids Handling Capability	3" (75 mm)
Max Casing Pressure	125 psig (862 kPa)
Fuel Cell	83 gallons (314 liters)
Dry Weight	4,600 lbs

PUMP MATERIAL

Casing	Cast iron (CD4MCu is an option)
Impeller	Cast iron (CD4MCu is an option)
Wear Rings	CD4MCu and 316 SS
Bearing Housing	Cast Iron
Bearing Lubrication	Grease
Shaft	431 Stainless Steel
Seal	Cartridge w/Silicon Carbide Faces
Chassis/Fuel Cell	Steel
Non-Return Valve	Nitrile Fitted Cast Iron
Environmental Box (Optional)	Steel

**GLOBAL PUMP**

10162 East Coldwater Road, Davison, MI 48423

Tel: 810.653.4828 Fax: 810.658.0632

1.866.360.PUMPwww.globalpump.com

INDUSTRIAL DIESEL ENGINE

V3800-CR-TE4B V3800-TIE4B

KUBOTA V3 SERIES (4-cylinder)

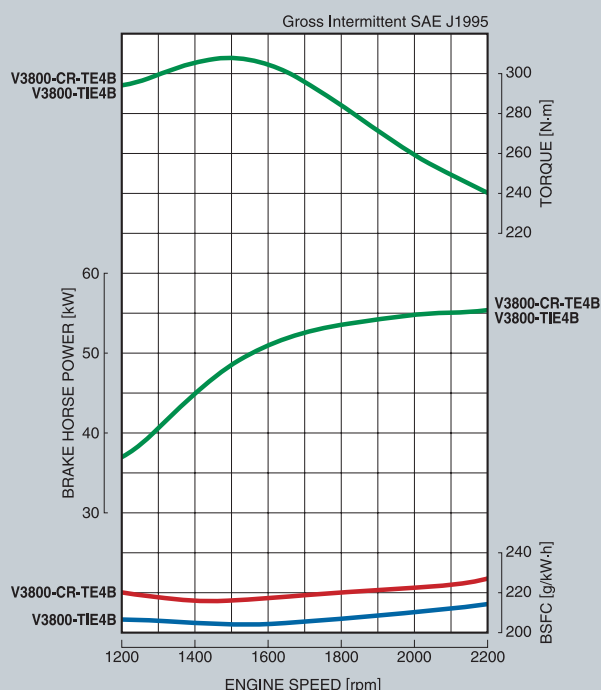
RATED POWER

55.4kW @2200rpm



Photographs may show non-standard equipment.

PERFORMANCE CURVES



FEATURES and BENEFITS

Performance and Technology

Customers expect two things from Kubota: the strong performance and the latest technology.

We continue to provide both by seeking excellence in emissions compliance and new strides in fully electronic controlled engine. These key areas allow Kubota to offer flexibility in our products and services to customers worldwide.

Emission Compliance

Meeting rigid emission regulations can be a challenge for any company. At Kubota, our V3800-CR-TE4B and V3800-TIE4B engines have been designed to comply with the stringent regulations: The EPA/CARB Tier4 and the EU Stage IIIB. In addition, innovative emission solutions, such as an aftertreatment device, have also been integrated into the engine.

Clean and Quiet Power

The Common Rail System has made it possible to optimize combustion and create a more durable, quiet, and fuel efficient engine. The engine model is available with Diesel Oxidation Catalyst (DOC) only or Diesel Particulate Filter (DPF) + DOC aftertreatment.

Flexibility

When working with customers in different countries who have different engine requirements, flexibility is a must. Since Kubota's V3 Series engines have evolved step-by-step to meet every EPA Tier, we can provide the appropriate emission regulation certified engine to any customer worldwide. In addition, we have designed an aftertreatment device with minimum package impact for easy installation.

Reliability

The Kubota's V3 Series engines are the best solution for your company's global marketing strategy. We continuously strive to meet your needs with the experience and expertise you expect and deserve.

KUBOTA V3 SERIES V3800-CR-TE4B / V3800-TIE4B

GENERAL SPECIFICATIONS

Model		V3800-CR-TE4B	V3800-TIE4B
Emission Regulation		Tier4 / Stage III B	
Type		Vertical 4-cycle liquid cooled Diesel	
Number of Cylinders		4	
Bore	mm (in)	100.0 (3.937)	
Stroke	mm (in)	120.0 (4.724)	
Displacement	L (cu.in)	3.769 (230.0)	
Combustion System		DI	
Aspiration		Turbocharged	Turbocharged + Turbo After Cooler
Aftertreatment device		DOC + DPF	DOC
Rated Speed	rpm	2200	
Output: Gross Intermittent	kW	55.4	
	HP	74.3	
	ps	75.3	
Direction of Rotation		Counter clockwise viewed from flywheel side	
Oil Pan Capacity	L (U.S.gal)	13.2 (3.5)	
Starter Capacity	V-kW	12-3.0	
Alternator Capacity	V-A	12-100	
Length	mm (in)	889 (35.0)	
Width	mm (in)	581 (22.8)	
Height	mm (in)	851 (33.5)	
Dry Weight	kg (lb)	325 (717)	324 (714)

*Specification is subject to change without notice.

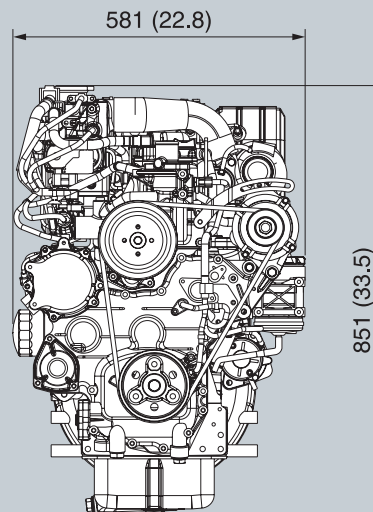
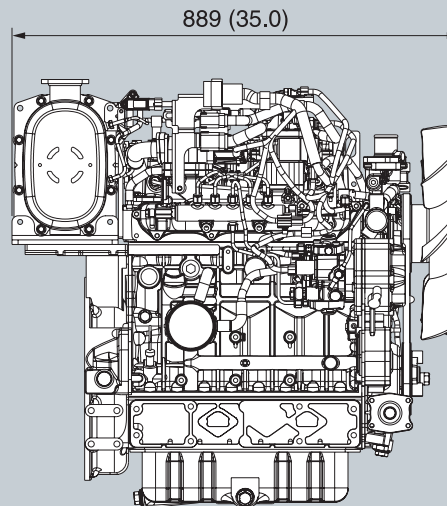
*Diesel Oxidation Catalyst (DOC)

*Diesel Particulate Filter (DPF)

*Output: Gross Intermittent SAE J1995

*Dimensions and weight are according to Kubota's standard specifications.

DIMENSIONS



Dimensions and weight depend on composed specifications.



KUBOTA Engine America Corporation

505 Schelter Road, Lincolnshire, IL 60069

Phone: 847-955-2500 Fax: 847-955-2699

www.kubotaengine.com

1415-01-COM '15.06. .STD