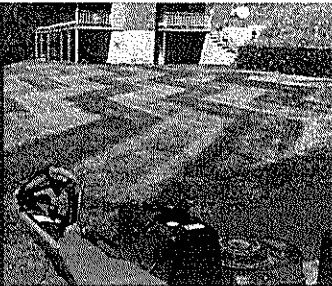


SCAG
POWER EQUIPMENT

TIGER CAT II



SCAG NATION PROFILE



HEATH R. / Bakersville, NC

■ **SCAG OWNER FOR 25 YEARS / COMMERCIAL OPERATOR**

■ **HOW DOES OWNING A SCAG IMPROVE YOUR BUSINESS?**

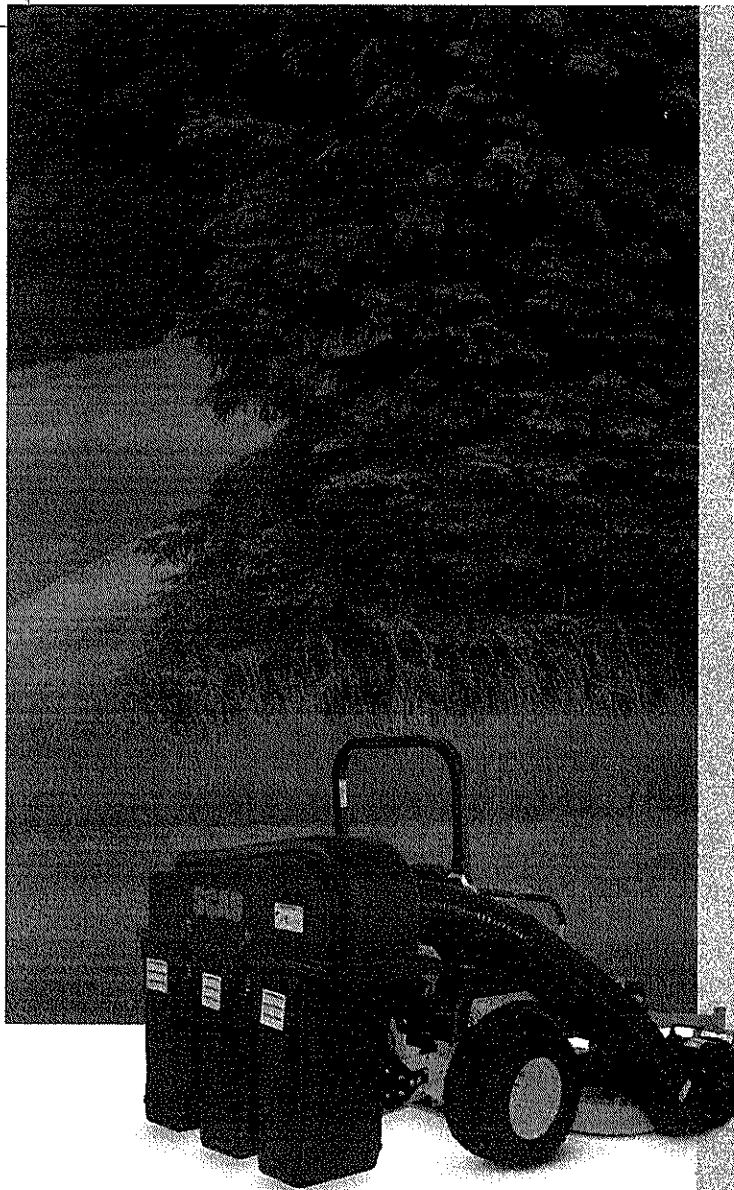
I know that my crews will be out cutting and not sitting at the shop with breakdowns.

■ **FAVORITE FEATURE OF YOUR SCAG MOWER?**

Durability.



- Heavy-duty, tubular-steel frame provides a solid foundation for years of reliable service; replaceable front caster wheel weldment.
- Fabricated, welded and reinforced Velocity Plus™ Cutter Deck is ultra-strong and truly commercial-grade. Tri-Plate deck is nearly ½" thick.
- Powerful drive system features dependable design, while dual 12 cc pumps and high-torque, cast-iron wheel motors ensure reliable power.
- Up to 12 mph forward and 5 mph reverse ground speeds make quick work of tough jobs.
- Low center of gravity delivers sure footing on a variety of terrain.
- Torsion-spring suspension seat adjusts to operator's weight to provide superior comfort. Seat features full padding, forward/rearward adjustment, high back, adjustable armrests and adjustable back angle.
- 4-point, rubber iso-mounting provides additional comfort to the seat.
- Large 24" drive tires ensure solid traction and curb-climbing ability.
- 9.5-gallon approximate fuel capacity for hours of cutting time. Large fuel tank filler neck allows for quick refueling. Fuel tank features a molded-in cup holder for extra convenience.
- Foot-operated parking brake allows the operator to apply the brake without removing hands from the steering controls. Ausco disc brakes for reliable performance.
- Large flat-free caster wheels feature tapered roller bearings for long life. Lip seals keep grease in and dirt out.
- Tough idler pulley system features all-steel pulleys, high-quality bearings and pulley-bearing debris guards for long, reliable service.
- Tiger Eye™ Advanced Monitoring System keeps a constant, real-time "eye" on important system functions of the Tiger Cat® II.
(Specific functions vary by mower model and engine.)



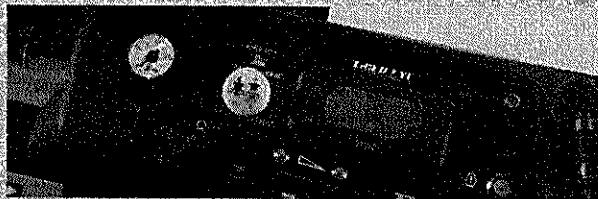
■ A variety of accessories are available for the Tiger Cat II, such as:

- Grass Catchers.
- Mulching Systems
- Trailer Hitch.
- Tiger Striper.
- Chrome Wheel Covers.
- LED Light Kit.
- Operator-Controlled Discharge Chute (OCDC).

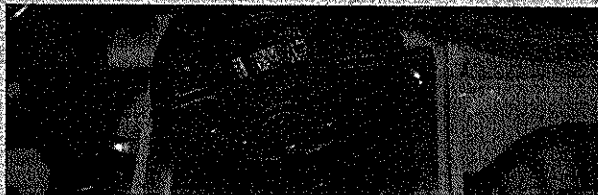
See page 68 for additional options.

- User-friendly design provides simple operation and allows easy access for maintenance.
- Air-filtration systems ensure clean engine air for maximum power and long life: heavy-duty remote canister filter on Kawasaki® FX, Kohler®, and Briggs Vanguard™ engines.
- All Tiger Cat II models include standard twin-stick steering controls, flat-free front caster tires and foldable Roll-Over Protection System (ROPS).

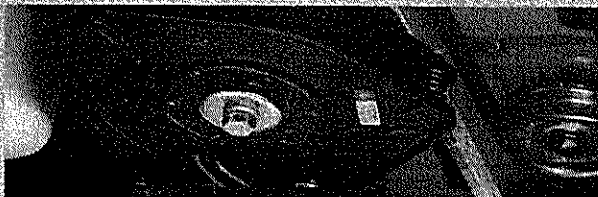
Actual product may differ from photos.



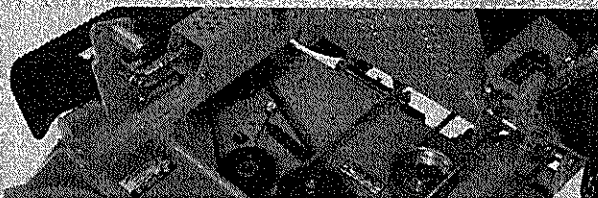
Operator-friendly instrument panel includes a conveniently located ignition switch, cutter-deck engagement switch, choke, throttle controls and Tiger Eye Advanced Monitoring System.



High-torque, cast-iron wheel motors ensure dependability. Heavy-duty drive system is designed for reliability.



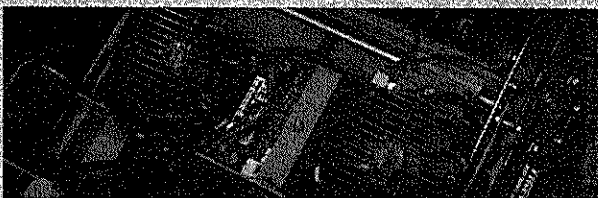
Heavy-duty Ogura GT3.5 clutch features 250 ft. lb. of holding strength. Adjustable air gap for long life.



Entire foot plate area lifts to provide complete access to the top of the deck for easy servicing.



Adjustable, 3-position, deck-off foot pedal makes changing the height-of-cut fast and easy. Adjusts from 1" to 5" in 1/4" increments.



Rugged 12 cc hydraulic pumps feature pressure-relief valves and top-mounted fans for added reliability and longer life.

ZERO-TURN MOWERS / 19

