

Ring Power®**Ring Power Corporation**

500 World Commerce Parkway

St. Augustine, FL 32092

Prepared For:
Florida Sheriff's Association

8/12/2020

Item #400: (1) NEW CATERPILLAR TH357D TELESCOPIC HANDLER**CONTRACT DETAILS**

Florida Sheriff's Association

Bid # FSA20-EQU18.0

Item #400: Group: TOOL CARRIER: Telescopic Tool Carrier

Contract Dates: October 1, 2020 through September 30, 2023

BID SPECIFICATION:

APPROXIMATE DIMENSIONS: Length: 196 in; Width: 90 in; Height, w/cab: 93 in; Wheelbase: 113 in; Weight: 17,155 lbs. ENGINE: Diesel, Tier 4 100hp; Turbocharged; Heavy duty cooling system. POWERTRAIN: Hydrostatic Drive; 2 Travel speeds low speed 3.0 mph, high speed 18 mph; All wheel drive; 3 Steering modes: all wheel, crab, and front wheel; Industrial lug type tires. COMFORT, CONVENIENCE AND SAFETY: Certified ROPS cab with air conditioning and heat; Suspension seat w/ seat belt; Work lights, safety lights, and warning beacon; Attachment controls in cab; Engine gauge instrumentation. HYDRAULIC SYSTEM: Lift capacity 7700 lbs.; Max lift 22 feet; Boom breakout force: 8000 lbs.

BASE MACHINE

567-5075	TH357D AG HANDLER CFG1
522-5805	PREP PACK, USA
518-5876	ENGINE, 92.6KW, HRC
558-7237	RAIN CAP, ENGINE BREATHER
517-9299	AXLE ARRANGEMENT, STD
497-9608	RIDE CONTROL, NONE
492-3922	LINES, FRONT HYD, SGL, MAN CPLR
517-6763	COUPLER, MANUAL, IT
506-3317	LINES, REAR AUX, NONE
499-0257	BATTERY, SINGLE
508-7894	LIGHTS, ROADING, NONE
503-1691	SEAT, FABRIC
229-0582	BELT, SEAT, 2" RETRACTABLE
492-3940	FNR, JOYSTICK ONLY

476-5226	MONITOR, NONE
513-4180	HEADLINER, STANDARD
512-4765	TIRES, 460/70 R24, MX, XMCL
518-2674	LICENSE PLATE, FRONT, NO GUARD
506-7647	TRAILER SERVICES, NONE
506-7531	HITCH, RETRIEVAL, NON-ROAD
508-7895	FENDERS, NONE
0G-0646	TH357 NORTH AMERICAN ORDER
500-6394	MANUAL, OPER. MAINT. ENGLISH
301-9757	CARRIAGE, STANDARD 50"
301-9753	FORK, PALLET 2.36" X 5" X 48", (2)

Ring Power Corporation



Cat[®] TH357D

AG HANDLER TELEHANDLER

FEATURES:

- **Engine Options** – Choose the right engine for you – two fuel efficient Cat[®] engines are available to suit a wide range of applications.
- **Frame, Boom and Linkage** – Designed for durability. Easy to access greasing points mean a long, trouble free life for the machine. A Z-bar linkage delivers powerful breakout forces and fast cycle times.
- **Powerful Hydraulics** – A variable displacement piston pump matched to a high performance flow sharing valve makes multi functioning easy. The load sensing system means excellent fuel economy, as the pump only works when required.
- **Cab** – The cab is designed with the operator in mind with a multi function joystick and a comfortable working environment. The unique “Operator Preferences” feature allows the machine to be tuned to suit individual operators. Options include a heated air suspension seat, large display screen with pre-loaded load charts, rearview camera, reversing sensors and air conditioning.

Specifications

Engine

	Standard	Option 1
Model*	Cat C3.4B	Cat C4.4 ACERT™
Gross power	83 kW (111 hp)	92.6 kW (124 hp)
Max torque	460 N·m (339 lbf·ft)	530 N·m (391 lbf·ft)

*Meets U.S. EPA Tier 4 Final emission standards.

Weights

Operating Weight with Carriage and Forks*	7785 kg	17,163 lb
---	---------	-----------

*Represents machine configuration of 83 kW (111 hp) engine on standard 15.5/80-24 16 ply tires.

Operating Specifications

Rated Load Capacity	3493 kg	7,700 lb
Maximum Lift Height	7.0 m	23.0 ft
Capacity at Maximum Lift Height	1973 kg	4,350 lb
Maximum Forward Reach	3.65 m	12.0 ft
Capacity at Maximum Forward Reach	1451 kg	3,200 lb
Outside Turning Radius over Tires	3.85 m	12.6 ft
Outside Turning Radius over Forks	3.95 m	13.0 ft

Service Refill Capacities

Fuel Tank	148 L	40 gal
Diesel Exhaust Fluid	19 L	5.0 gal
Hydraulic Tank	120 L	31.7 gal

Brakes

Service Brakes	Boost assisted oil immersed multi disc on both axles
Parking Brake	Mechanically actuated on front axle service brakes

Transmission*

Type	Cat PG124 6 speed power shift	
Forward		
1	5.8 km/h	3.6 mph
2	8.6 km/h	5.3 mph
3	11.3 km/h	7.0 mph
4	16.7 km/h	10.4 mph
5	25.4 km/h	15.8 mph
6	40.0 km/h	24.9 mph
Reverse		
1	5.8 km/h	3.6 mph
2	11.3 km/h	7.0 mph
3	25.4 km/h	15.8 mph

*Travel speed is subject to machine configuration.

Electrical

Battery	1 × 12V 1,000 CCA Battery
Alternator Output	12V/150A



TH357D Ag Handler Telehandler

Hydraulic System

System Type	Load Sensing, Closed Center	
Pump Type	Variable Flow, Axial Piston	
Maximum Pump Capacity	140 L/min	36.9 gal/min
System Pressure	260 bar	3,770 psi
Auxiliary Hydraulic Pressure	245 bar	3,553 psi
Auxiliary Hydraulic Flow		
Boom Head – Intermittent	95 L/min	25 gal/min
Boom Head – Continuous	95 L/min	25 gal/min
Machine Rear	80 L/min	21 gal/min

Boom Performance

Boom Up	6.5 sec
Boom Down	5.8 sec
Tele Out	5.5 sec
Tele In	5.5 sec
Crowd Forward (Dump)	3 sec
Crowd Backward	3 sec
Combined	
Up and Out	10.2 sec
Down and In	8.2 sec

Axles

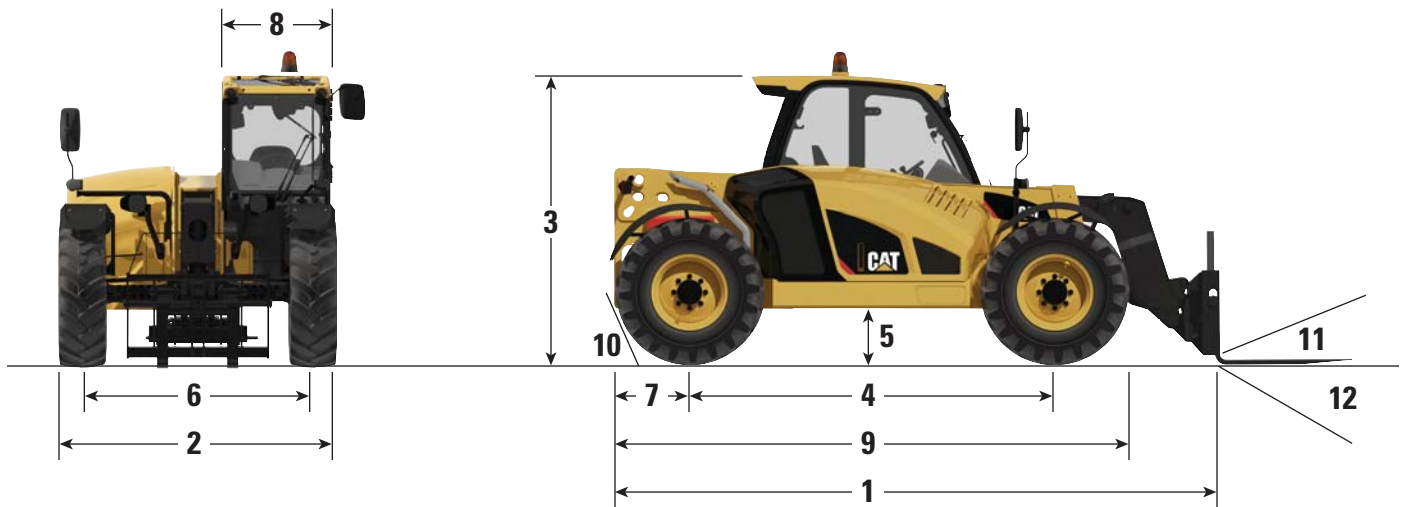
Front Axle	High bias, planetary reduction hubs with limited slip differential
Rear Axle	Open differential with planetary reduction hubs

Tires

Standard	Mitas 15.5/80-24 16 ply
Options	Michelin 15.5 R25 XHA
	Michelin 460/70 R24 XMCL
	Michelin 500/70 R24 XMCL
	Michelin 440/80 24 Power CL
	Michelin 400/80 24 Power CL
	Michelin 460/70 R24 Bibload
	Firestone Duraforce
	13 × 24 Solid Tires

Performance

Drawbar Pull		
83 kW/111 hp Engine	92 kN	20,682 lbf
92.6 kW/124 hp Engine	88 kN	19,783 lbf
Boom Breakout Force	50 kN	11,240 lbf
Bucket Breakout Force	72 kN	16,186 lbf
Quick Coupler Rotation	152°	
Noise Levels		
In Cab	74 dB(A)	
External	106 dB(A)	
Towable Mass		
Hydraulically Braked	12 000 kg	26,455 lb

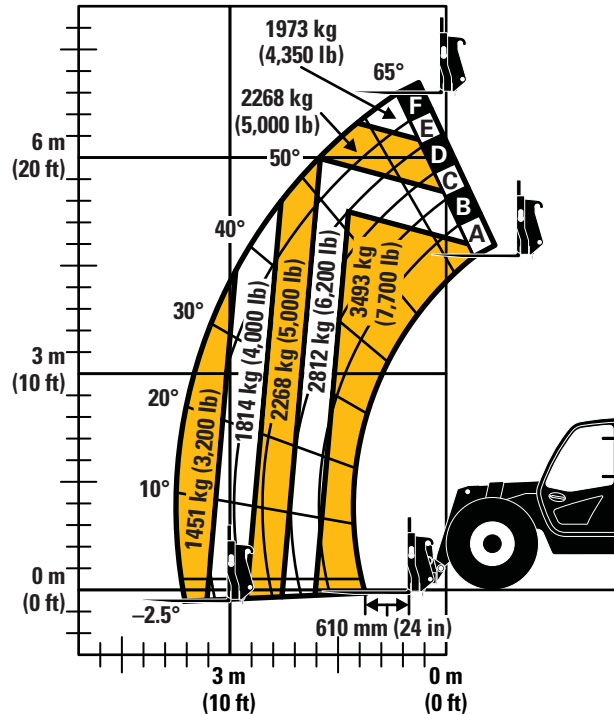


Dimensions (All dimensions are approximate.)

1 Overall Length to Front of Carriage	5000 mm	16.4 ft	7 Overhang	1000 mm	3.3 ft
2 Overall Width (standard tires)	2382 mm	7.8 ft	8 Cab Width	900 mm	3.0 ft
3 Overall Height (standard tires)*	2475 mm	8.1 ft	9 Machine Length	5000 mm	16.4 ft
4 Wheelbase	3165 mm	10.3 ft	10 Departure Angle	60°	
5 Ground Clearance	430 mm	1.4 ft	11 Maximum Fork Crowd Angle	24°	
6 Track	1988 mm	6.5 ft	12 Maximum Fork Dump Angle	128°	

*Add 200 mm (7.9 in) for beacon.
Add 40 mm (1.6 in) for top guard.

Load Chart and Dimensions



IMPORTANT

Rated lift capacities shown are with machine equipped with carriage and pallet forks. The machine must be level on a firm surface with undamaged, properly inflated tires. Machine specifications and stability are based on rated lift capacities at specific boom angles and boom lengths. (If specifications are critical, the proposed application should be discussed with your dealer.)

DO NOT exceed rated lift capacity loads, as unstable and dangerous machine conditions will result.

DO NOT tip the machine forward to determine the allowable load.

Use only approved attachments with proper material handler model/attachment load capacity charts displayed in the operator's cab. OSHA requires all rough terrain forklift operators be trained according to OSHA 29 CFR 1910.178 (1).

Due to continuous product improvements, machine specifications and/or equipment changes may be made without prior notification. This machine meets or exceeds ANSI/ITSDF B56.6-2016 as originally manufactured for intended applications.

TH357D Ag Handler Telehandler

Standard and Optional Equipment (Standard and Optional equipment may vary. Consult your Cat dealer for details.)

	Standard	Optional		Standard	Optional
Cab ROPS and FOPS			Tires		
Reversing Camera	—	✓	Mitas 15.5/80-24 16 ply	✓	—
Reversing Sensors	—	✓	Michelin 460/70 R24 XMCL	—	✓
Large Electronic Display Screen	—	✓	Michelin 500/70 R24 XMCL	—	✓
Sunscreen	✓	—	Michelin 400/80 24 Power CL	—	✓
Mechanical Suspension Seat with Seat Belt	✓	—	Michelin 440/80 24 Power CL	—	✓
Air Suspension Seat with Seat Belt	—	✓	Michelin 460/70 R24 Bibload	—	✓
Heated Air Suspension Seat with Seat Belt	—	✓	Michelin 15.5 R25 XHA	—	✓
Roof Wiper	✓	—	Firestone Duraforce	—	✓
Screen Guard	—	✓	13 × 24 Solid Tires	—	✓
Roof Guard	✓	—	Tow Hitches		
Heater/De-mister	✓	—	Retrieval Hitch	—	✓
Air Conditioning	—	✓	Hydraulic Pick Up Hitch	—	✓
Engine Speed Set	✓	—	EEC Manual Hitch	—	✓
Multi Function Joystick Controller with FNR	✓	—	EEC Automatic Hitch	—	✓
Column Mounted FNR Lever	—	✓	EEC Automatic Hitch with Piton	—	✓
Front and Rear Windscreen Wipers	✓	—	Trailer Braking Valve	—	✓
Mechanical Parking Brake	✓	—	Quick Couplers		
SAHR Parking Brake	—	✓	Manual Cat “IT” Interface	✓	—
Electrical			Hydraulic Cat “IT” Interface	—	✓
1 × 12V 1,000 CCA Battery	✓	—	Work Tools		
2 × 12V 815 CCA Batteries	—	✓	Floating Fork Carriage	—	✓
Block Heater 110 Volt	—	✓	ISO Class 3 Fixed Fork Carriage	—	✓
Work Lights, 4 × Cab Mounted (2 front, 2 rear) 2 × Boom Mounted	—	✓	Side Shift Carriage	—	✓
Product Link™ Ready, Version 641	—	✓	1 m³ (1.3 yd³) General Purpose Bucket	—	✓
Seven (7) Pin Trailer Service	—	✓	1.5 m³ (1.95 yd³) Rehandling Bucket	—	✓
Reverse Alarm	✓	—	1.0 m³ (1.3 yd³) Multi Purpose Bucket	—	✓
Rotating Beacon	—	✓	2.0 m³ (2.6 yd³) Grain Bucket	—	✓
Other Equipment			2.5 m³ (3.25 yd³) Grain Bucket	—	✓
Boom Brushes	✓	—	3.0 m³ (3.9 yd³) Grain Bucket	—	✓
Ride Control with Boom Float	—	✓	1225 mm (48 in) Bale Fork	—	✓
Single Auxiliary Service to Boom Head	✓	—	Grapple Bucket	—	✓
2 nd Auxiliary Service to Boom Head	—	✓	Muck Fork and Grapple	—	✓
Auxiliary Service to Rear	—	✓	Bale Handler	—	✓
Rear Hitch Mirror, Flat	—	✓	Sweeper Collector	—	✓
Rear Hitch Mirror, Convex	—	✓			
Tool Box	—	✓			

For more complete information on Cat products, dealer services, and industry solutions, visit us on the web at www.cat.com

© 2017 Caterpillar
All rights reserved

Materials and specifications are subject to change without notice. Featured machines in photos may include additional equipment. See your Cat dealer for available options.

CAT, CATERPILLAR, SAFETY.CAT.COM, their respective logos, “Caterpillar Yellow” and the “Power Edge” trade dress, as well as corporate and product identity used herein, are trademarks of Caterpillar and may not be used without permission.

AEHQ8015 (04-2017)
(Americas North)



Effective with sales to the first user on or after January 1, 2018

CATERPILLAR LIMITED WARRANTY

Designated Machines with 24 Months/2000 Hour Warranty

USA & Canada

Caterpillar Inc. or any of its subsidiaries ("Caterpillar") warrants the following new products sold by it in the USA or Canada to be free from defects in material and workmanship:

- Compact Construction Equipment including Compact Track & Multi Terrain Loaders, Mini Hydraulic Excavators, and Skid Steer Loaders sold in USA or Canada.
- Attachments/work tools installed on such machines prior to delivery (unless covered by the Cat® Work Tool warranty statement or another manufacturer's warranty). Hammer tool points and compacting plates used on hydraulic hammers are not warranted.

Additional warranties are applicable against breakage for certain Cat Ground Engaging Tools and for wear on all landfill compactor tips. Refer to the applicable warranty statements for coverage detail.

This warranty does not apply to:

- Cat Batteries
- Mobil-trac belts, rubber tracks used on multi terrain loaders, compact track loaders, and mini hydraulic excavators
- Cat Work Tools

These products are covered by other Caterpillar warranties. This warranty is subject to the following:

Warranty Period

For new machines sold in the USA or Canada the warranty period is 24-months/2000 hours, starting from date of delivery to the first user.

Note:

- For hydraulic line's quick connect/disconnect components sold on compact wheel loaders, mini hydraulic excavators, skid steer loaders, multi terrain loaders, and compact track loader machines, the warranty period is 50 hours starting from the date of delivery to the first user.

Caterpillar Responsibilities

If a defect in material or workmanship is found during the warranty period, Caterpillar will, during normal working hours and at a place of business of a Cat dealer or other source approved by Caterpillar

- Provide (at Caterpillar's choice) new, remanufactured, or Caterpillar approved repaired parts or assembled components needed to correct the defect.

Note: New, remanufactured, or Caterpillar approved replacement parts provided under the terms of this warranty are warranted for the remainder of the warranty period applicable to the product in which installed as if such parts were original components of that product. Items replaced under this warranty become the property of Caterpillar.

- Replace lubricating oil, filters, antifreeze, and other service items made unusable by the defect.
- Provide reasonable and customary labor needed to correct the defect.

User Responsibilities

The user is responsible for:

- Providing proof of delivery date to the first user.
- Labor costs, except as stated under "Caterpillar Responsibilities."

- Transportation costs, except as stated under "Caterpillar Responsibilities."
- Premium or overtime labor costs.
- Parts shipping charges in excess of those that are considered usual and customary.
- Local taxes, if applicable.
- Costs to investigate complaints, unless the problem is caused by a defect in Caterpillar material or workmanship.
- Giving timely notice of a warrantable failure and promptly making the product available for repair.
- Performance of the required maintenance (including use of proper fuel, oil, lubricants, and coolant) and items replaced due to normal wear and tear.
- Allowing Caterpillar access to all electronically stored data.

Limitations

Caterpillar is not responsible for:

- Failures resulting from any use or installation that Caterpillar judges improper.
- Failures resulting from attachments, accessory items, and parts not sold or approved by Caterpillar.
- Failures resulting from abuse, neglect, and/or improper storage or repair.
- Failures resulting from user's delay in making the product available after being notified of a potential product problem.
- Failures resulting from unauthorized repair or adjustments, and unauthorized fuel setting changes.

continued...

This warranty covers every major component of the products. Claims under this warranty should be submitted to a place of business of a Cat dealer or other source approved by Caterpillar. For further information concerning either the location to submit claims or Caterpillar as the issuer of this warranty, write Caterpillar Inc., 100 N. E. Adams St., Peoria, IL USA 61629, telephone 1 (309) 675-1000, or go to URL www.cat.com, Find Your Dealer

Caterpillar's obligations under this Limited Warranty are subject to, and shall not apply in contravention of, the laws, rules, regulations, directives, ordinances, orders, or statutes of the United States, or of any other applicable jurisdiction, without recourse or liability with respect to Caterpillar.

A) For products operating outside of Australia, Fiji, Nauru, New Caledonia, New Zealand, Papua New Guinea, the Solomon Islands, and Tahiti, the following is applicable:

NEITHER THE FOREGOING EXPRESS WARRANTY NOR ANY OTHER WARRANTY BY CATERPILLAR, EXPRESS OR IMPLIED, IS APPLICABLE TO ANY ITEM CATERPILLAR SELLS THAT IS WARRANTED DIRECTLY TO THE USER BY ITS MANUFACTURER.

THIS WARRANTY IS EXPRESSLY IN LIEU OF ANY OTHER WARRANTIES, EXPRESS OR IMPLIED, INCLUDING ANY WARRANTY OF MERCHANTABILITY OR FITNESS FOR A PARTICULAR PURPOSE, EXCEPT CATERPILLAR EMISSION-RELATED COMPONENTS WARRANTY FOR NEW ENGINES, WHERE APPLICABLE. REMEDIES UNDER THIS WARRANTY ARE LIMITED TO THE PROVISION OF MATERIAL AND SERVICES, AS SPECIFIED HEREIN.

CATERPILLAR IS NOT RESPONSIBLE FOR INCIDENTAL OR CONSEQUENTIAL DAMAGES.

CATERPILLAR EXCLUDES ALL LIABILITY FOR OR ARISING FROM ANY NEGLIGENCE ON ITS PART OR ON THE PART OF ANY OF ITS EMPLOYEES, AGENTS, OR REPRESENTATIVES IN RESPECT OF THE MANUFACTURE OR SUPPLY OF GOODS OR THE PROVISION OF SERVICES RELATING TO THE GOODS.

IF OTHERWISE APPLICABLE, THE VIENNA CONVENTION ON CONTRACTS FOR THE INTERNATIONAL SALE OF GOODS IS EXCLUDED IN ITS ENTIRETY.

B) For products operating in Australia, Fiji, Nauru, New Caledonia, New Zealand, Papua New Guinea, the Solomon Islands, and Tahiti, the following is applicable:

THIS WARRANTY IS IN ADDITION TO WARRANTIES AND CONDITIONS IMPLIED BY STATUTE AND OTHER STATUTORY RIGHTS AND OBLIGATIONS THAT BY ANY APPLICABLE LAW CANNOT BE EXCLUDED, RESTRICTED OR MODIFIED ("MANDATORY RIGHTS"). ALL OTHER WARRANTIES OR CONDITIONS, EXPRESS OR IMPLIED (BY STATUTE OR OTHERWISE), ARE EXCLUDED. WITHOUT LIMITING THE FOREGOING PROVISIONS OF THIS PARAGRAPH, WHERE A PRODUCT IS SUPPLIED FOR BUSINESS PURPOSES, THE CONSUMER GUARANTEES UNDER THE CONSUMER GUARANTEES ACT 1993 (NZ) WILL NOT APPLY.

NEITHER THIS WARRANTY NOR ANY OTHER CONDITION OR WARRANTY BY CATERPILLAR, EXPRESS OR IMPLIED (SUBJECT ONLY TO THE MANDATORY RIGHTS), IS APPLICABLE TO ANY ITEM CATERPILLAR SELLS THAT IS WARRANTED DIRECTLY TO THE USER BY ITS MANUFACTURER.

IF THE MANDATORY RIGHTS MAKE CATERPILLAR LIABLE IN CONNECTION WITH SERVICES OR GOODS, THEN TO THE EXTENT PERMITTED UNDER THE MANDATORY RIGHTS, THAT LIABILITY SHALL BE LIMITED AT CATERPILLAR'S OPTION TO (a) IN THE CASE OF SERVICES, THE SUPPLY OF THE SERVICES AGAIN OR THE PAYMENT OF THE COST OF HAVING THE SERVICES SUPPLIED AGAIN AND (b) IN THE CASE OF GOODS, THE REPAIR OR REPLACEMENT OF THE GOODS, THE SUPPLY OF EQUIVALENT GOODS, THE PAYMENT OF THE COST OF SUCH REPAIR OR REPLACEMENT OR THE ACQUISITION OF EQUIVALENT GOODS.

CATERPILLAR EXCLUDES ALL LIABILITY FOR OR ARISING FROM ANY NEGLIGENCE ON ITS PART OR ON THE PART OF ANY OF ITS EMPLOYEES, AGENTS OR REPRESENTATIVES IN RESPECT OF THE MANUFACTURE OR SUPPLY OF GOODS OR THE PROVISION OF SERVICES RELATING TO THE GOODS.

CATERPILLAR IS NOT LIABLE FOR INCIDENTAL OR CONSEQUENTIAL DAMAGES UNLESS IMPOSED UNDER MANDATORY RIGHTS.

IF OTHERWISE APPLICABLE, THE VIENNA CONVENTION (CONTRACTS FOR THE INTERNATIONAL SALE OF GOODS) IS EXCLUDED IN ITS ENTIRETY.

C) For products supplied in Australia:

IF THE PRODUCTS TO WHICH THIS WARRANTY APPLIES ARE:

- I. PRODUCTS OF A KIND ORDINARILY ACQUIRED FOR PERSONAL, DOMESTIC OR HOUSEHOLD USE OR CONSUMPTION; OR**
- II. PRODUCTS THAT COST AUD 40,000 OR LESS,**

WHERE THOSE PRODUCTS WERE NOT ACQUIRED FOR THE PURPOSE OF RE-SUPPLY OR FOR THE PURPOSE OF USING THEM UP OR TRANSFORMING THEM IN THE COURSE OF PRODUCTION OR MANUFACTURE OR IN THE COURSE OF REPAIRING OTHER GOODS OR FIXTURES, THEN THIS SECTION C APPLIES.

THE FOLLOWING MANDATORY TEXT IS INCLUDED PURSUANT TO THE AUSTRALIAN CONSUMER LAW AND INCLUDES REFERENCES TO RIGHTS THE USER MAY HAVE AGAINST THE DIRECT SUPPLIER OF THE PRODUCTS: OUR GOODS COME WITH GUARANTEES THAT CANNOT BE EXCLUDED UNDER THE AUSTRALIAN CONSUMER LAW. YOU ARE ENTITLED TO A REPLACEMENT OR REFUND FOR A MAJOR FAILURE AND COMPENSATION FOR ANY OTHER REASONABLY FORESEEABLE LOSS OR DAMAGE. YOU ARE ALSO ENTITLED TO HAVE THE GOODS REPAIRED OR REPLACED IF THE GOODS FAIL TO BE OF ACCEPTABLE QUALITY AND THE FAILURE DOES NOT AMOUNT TO A MAJOR FAILURE. THE INCLUSION OF THIS TEXT DOES NOT CONSTITUTE ANY REPRESENTATION OR ACCEPTANCE BY CATERPILLAR OF LIABILITY TO THE USER OR ANY OTHER PERSON IN ADDITION TO THAT WHICH CATERPILLAR MAY HAVE UNDER THE AUSTRALIAN CONSUMER LAW.

TO THE EXTENT THE PRODUCTS FALL WITHIN THIS SECTION C BUT ARE NOT OF A KIND ORDINARILY ACQUIRED FOR PERSONAL, DOMESTIC OR HOUSEHOLD USE OR CONSUMPTION, CATERPILLAR LIMITS ITS LIABILITY TO THE EXTENT IT IS PERMITTED TO DO SO UNDER THE AUSTRALIAN CONSUMER LAW TO, AT ITS OPTION, THE REPAIR OR REPLACEMENT OF THE PRODUCTS, THE SUPPLY OF EQUIVALENT PRODUCTS, OR THE PAYMENT OF THE COST OF SUCH REPAIR OR REPLACEMENT OR THE ACQUISITION OF EQUIVALENT PRODUCTS.

THE WARRANTY SET OUT IN THIS DOCUMENT IS GIVEN BY CATERPILLAR INC. OR ANY OF ITS SUBSIDIARIES, 100 N. E. ADAMS ST, PEORIA, IL USA 61629, TELEPHONE 1 309 675 1000, THE USER IS RESPONSIBLE FOR ALL COSTS ASSOCIATED WITH MAKING A CLAIM UNDER THE WARRANTY SET OUT IN THIS DOCUMENT, EXCEPT AS EXPRESSLY STATED OTHERWISE IN THIS DOCUMENT, AND THE USER IS REFERRED TO THE BALANCE OF THE DOCUMENT TERMS CONCERNING CLAIM PROCEDURES, CATERPILLAR RESPONSIBILITIES AND USER RESPONSIBILITIES.

TO THE EXTENT PERMISSIBLE BY LAW, THE TERMS SET OUT IN THE REMAINDER OF THIS WARRANTY DOCUMENT (INCLUDING SECTION B) CONTINUE TO APPLY TO PRODUCTS TO WHICH THIS SECTION C APPLIES.

©2018 Caterpillar All Rights Reserved.

CAT, CATERPILLAR, their respective logos, "Caterpillar Yellow," the "Power Edge" trade dress as well as corporate and product identity used herein, are trademarks of Caterpillar and may not be used without permission.