



**Ring Power Corporation**  
500 World Commerce Parkway  
St. Augustine, FL 32092

Prepared For:  
Florida Sheriff's Association

8/14/2020

**Item #307, Epsilon M100L72 Hydraulic Loader**

**CONTRACT DETAILS**

Florida Sheriff's Association Bid # FSA20-EQU18.0 Item #307, Group: Refuse and Waste Collection Bodies & Trailer Mounted Equipment Contract Dates: October 1, 2020 through September 30, 2023
--------------------------------------------------------------------------------------------------------------------------------------------------------------------------------------------------------

**BID SPECIFICATION:**

NOTE: REFUSE BODIES REQUIRE SEPARATE PURCHASE OF CAB AND CHASSIS. Trailer mounted units must be sized and consistent with manufacturer GVWR ratings and other specifications for the mounted refuse equipment and payload. Must include all of the OEM standard equipment and be equipped with all LED lighting, and must meet all DOT and FMVSS safety standards. The completed unit must be delivered to the purchaser in a "ready to work" condition. This equipment is used collect Municipal Solid Waste (MSW) , Commercial Solid Waste (CSW), and Recycling and Vegetation.

**BASE MACHINE**

M100LSTD	Complete structural, hydraulic and electrical installation of M100L72 loader, including: Hotshift PTO with direct mount hydraulic pump Palfinger 53 gallon steel hydraulic tanks with in tank return filter, 2" shut off valve and 46 weight hydraulic oil Continental hydraulic hose and fittings Angle steel wearplates between loader and truck frame, bolted to frame and painted gloss black enamel 24" steel pass through operator platform, mounted behind cab, with serrated, non-slip inlaid grating and access steps with handrails on driver and passenger side of truck Weatherproof electrical junction box with DIN rail mounted mini-breaker for crane power and throttle relay, solenoid activated with PTO switch Throttle control switches installed at both operator control stations, wired to throttle relay in junction box with relay connected to truck remote PTO interface plug (if supplied)  42" Bakker BDV100-42 refuse grapple featuring Protect Connect mounting system
----------	-----------------------------------------------------------------------------------------------------------------------------------------------------------------------------------------------------------------------------------------------------------------------------------------------------------------------------------------------------------------------------------------------------------------------------------------------------------------------------------------------------------------------------------------------------------------------------------------------------------------------------------------------------------------------------------------------------------------------------------------------------------------------------------------------------------------------------------------------------------------------------------------------------------------------------------------------------------------------------------------------------------------------------------

	20' BeauRoc MPMD dump body (27 cu.yd.) with 60" sides, tapered to 48" at front of body
	Body floor, sides and tailgate constructed of 3/16" DOMEX 100W steel
	Single swing rear body door
	Tafco LL-800DH underbody hoist
	Body painted gloss black enamel
	Manual dump body control valve located at ground level on driver side of truck
	Body air control lever mounted adjacent to loader control valve on driver side operator platform
	LED body light package - 3/4" marker and 3 light bar lights with 6" oval stop/turn/tail and reverse lights in rear body posts
	LED strobe lights, cab switched, featuring flange mounted strobe lights in front grill / bumper, loader stabilizer legs and 6" oval lights in rear body posts
	Steel tube ICC bumper uprights and cross beam
	Spring loaded, frame mounted mudflap brackets with mudflaps
	18'X18"X36" black steel toolbox, frame mounted
	All DOT and function decals
	QR code equipment management system labeling
	Complete load and stability testing
	Epsilon M100L72 Hydraulic Loader
	Classification HC1/HD4/B4
	Boom length 23' 7" single telescope
	Net slewing torque: 17,700 ft-lbs.
	Operating pressure: 3,120-psi
	Integrated outrigger beam, hydraulically extendable outriggers
	Stabilizers automatically tiltable to 45°
	Oil cooler mounted and installed between frame and ladder (exterior)
	Rotation angle 425 degrees
	Linkage system between main and outer boom
	Main boom cylinder protection
	KTL primer, RAL 3020 "Epsilon Red" powder coating
TOG	Dead point above opposite stabilizer beam
RX39	Outrigger span 3,9 m (12' 6")
	Mounting bolts kit
VA	Short stabilizer legs
	Operator manual. Spare parts manual. Service manual
SCUS-J/LHV/AX2/VA	Dual stand up controls w/pilot operated joysticks, Parker F130CF 10 section valve, LHV
BK138	Epsilon RB10F(10t with lateral outputs) + 4-eye knuckle set + hoses, suitable for scrap grabs



## **M100L72 - THE BULK WASTE CRANE SOLUTION**

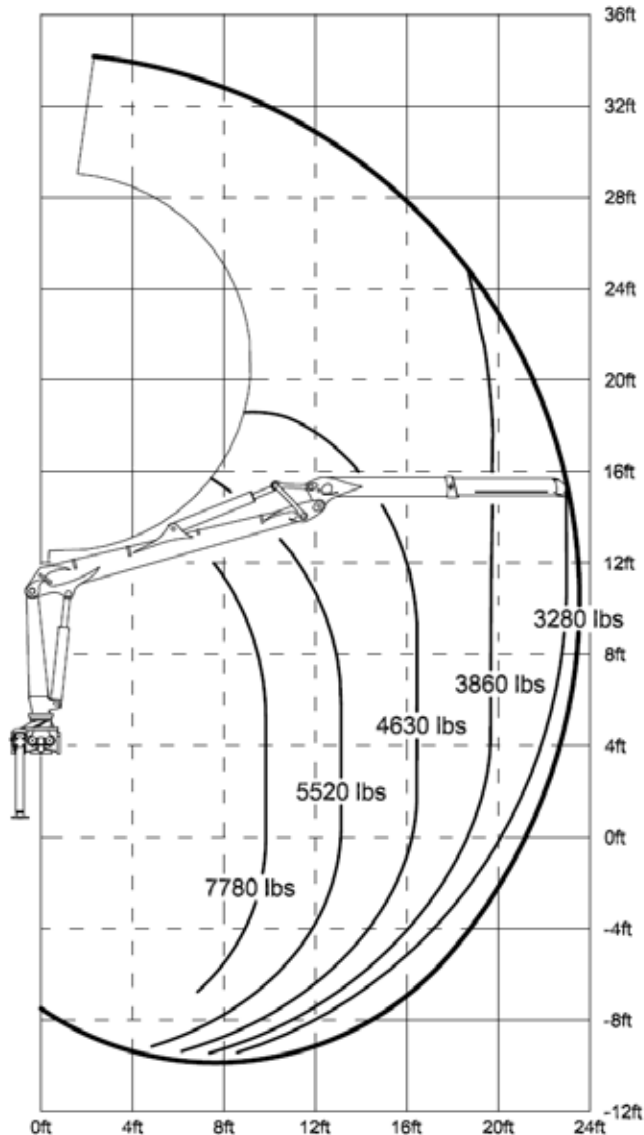


The superior engineering of PALFINGER delivers the most effective combination of power, performance, speed, and quality. The M100L72 features a long main boom designed for maximum protection with a top mounted cylinder. The main lift cylinder is protected by a heavy-duty steel guard, and the EPScope extension system provides unmatched protection with internal components that are serviceable without dismantling the boom. Every hose, pipe and cylinder on the M100L72 are either internally routed or protect from the elements. The double rack slewing system provides an industry leading net slewing torque, and the linkage system gives the operator up to 60% more lifting power creating constant main boom speed and power throughout the lift.

[WWW.PALFINGER.COM](http://WWW.PALFINGER.COM)

# M100L72 THE PERFECT COMBINATION OF POWER, SPEED AND PRECISION

## M100L72 BULK WASTE CRANE



## TECHNICAL SPECIFICATIONS

Max. lifting moment	73,760 ft.lbs
Capacity and reach	7,780 lbs. @ 10'
	5,100 lbs. @ 15'
	3,860 lbs. @ 20'
Maximum reach	23' - 6"
Rotation	425°
Rotation speed	8.2 RPM
Net slewing torque	17,700 ft.lbs
Uninstalled weight (without attachment)	4,010 lbs.

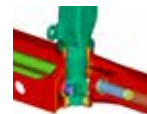
## EPSILON - FEATURES AND BENEFITS



**EPSCOPE** - Extension components are located inside the boom for maximum protection. Service maintenance is facilitated by two protective covers that provide access to exchange hoses, pipes, and cylinder; no need to dismantle boom.



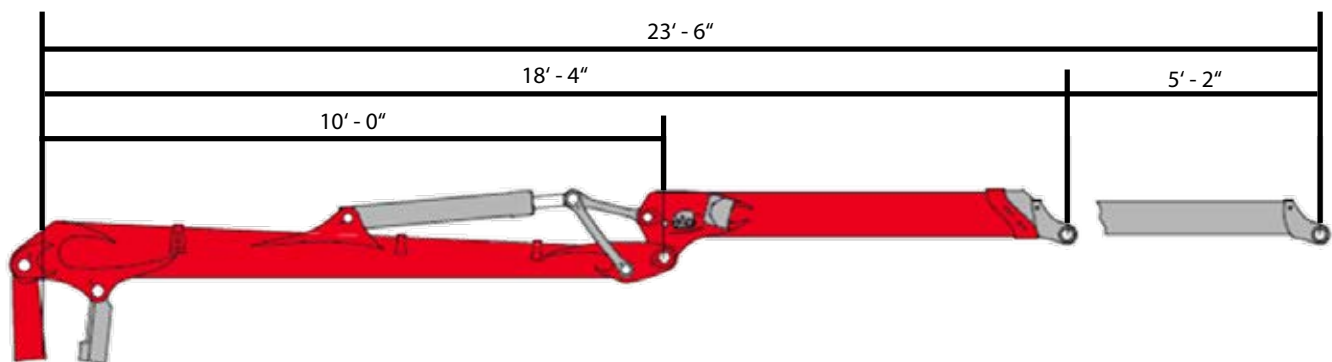
**EPSLINK** - Provides maximum protection and maneuverability through internal hose routing. No more hoses hanging around the link/rotator vulnerable to breakage from timber/scrap or from being stowed on the load.



**POWERFUL SLEWING** - 17,700 ft.-lbs. of net slewing torque derived via a solid double rack slewing system running in an oil bath with a self-aligning roller bearing. End of stroke damping for precision control, smooth operation and increased life of components.



**LINKAGE SYSTEM** - Provides up to 60% more lifting power in the upper working area creating constant main boom speed and power throughout the lift.



# **GUARANTEE AND WARRANTY GUIDELINES**

## **General section**

**PALFINGER**



## APPENDIX 3: Product specific Guarantee and Warranty Guidelines

# Timber & Refuse Loaders

### 1. Guarantee and Warranty periods

PALFINGER grants to the contract partner the following guarantee and warranty periods (in each case the condition which occurs first is decisive; wear and tear parts are always excluded):

- 12 months or 1000 operating hours full guarantee; and
- 24 months or 2000 operating hours guarantee on load bearing parts;
- 36 months or 3000 operating hours guarantee for material costs (excluding worktime) for load bearing parts, excluding grab housing and grab arms

The guarantee and warranty period begins in general upon handover to the end customer but in no case any later than 6 months upon delivery from PALFINGER to the contract partner.

### 2. Load bearing parts

Load bearing parts are defined welding constructions which are not subject to natural wear and tear.

- Base
- Extension box
- Crane column
- Main boom
- Outer boom
- Extension booms
- Cylinder tubes
- Grab housing (only Epsilon wood grabber)
- Grab arms (only Epsilon wood grabber)
- Power link
- Turntable
- Outtrigger box (SRX39 and SRX47)

### 3. Wear and tear parts

Wear and tear parts are such parts which during normal operation become subject to natural wear and tear; Defects of materials or installation faults are not considered wear and tear.

Wear and tear parts include in particular:

- guide blocks
- bearings
- bearing bushes



- seals
- protection hoses
- fuses, lamp holders
- stickers

#### **4. Seals and settings**

Seals on the PALFINGER product may be removed only by qualified specialists from an authorized PALFINGER dealer and upon prior consultation of PALFINGER. In the event of the removal of the original seal the form A1 must be completed, duly executed and sent to PALFINGER (Fax, email etc.). The undersigned company shall be liable for the correct pressure setting and pump capacity of the crane.

All settings of valves by the body manufacturer (e.g. on the variable pump or the control valve, if the PALFINGER product was delivered by PALFINGER without such control valve) shall be made in accordance with manufacturer's specifications and a seal must be correctly applied (with a registered tool).

PALFINGER must be notified of the settings with form A1.

#### **5. Extended guarantee**

With the purchase of the optional extended warranty program listed in the most current Palfinger Price List, the standard warranty can be extended to a maximum period of 24 months. The optional extended warranty must be purchased with the Loader to be valid. The extended warranty becomes void if the contracting partner does not register the Loader within the time limit set out in the main section of the Guarantee & Warranty Guidelines.

- Maximum 1000 operating hours per year.
- The extended warranty program does not extend to hydraulic pumps and attachments such as grabs, rotators, pallet forks, etc..

This extended warranty excludes the painting (KTL/powder coating), PEC equipment, accumulators/batteries, and wear and tear parts pursuant to point 3.

#### **6. Subsequent purchase of guarantee**

PALFINGER grants the possibility to subsequently purchase an extension of the full guarantee for a product that was already handed over pursuant to point 5 (Extended guarantee)

This option for a purchase is only possible within 9 months upon the date of delivery (by PALFINGER).

#### **7. Freight Allowance**

Transport costs of spare parts supplied and used in a warranty repair will be reimbursed, when properly claimed, as a Freight Allowance, at a flat rate of 10% of the net value of reimbursed parts.



## 8. Hourly Rate Schedule

For all contracting partners, as a minimum PALFINGER warranty reimburses 100% of the contracting partner's posted shop labor rate with a maximum rate of \$100.00/hr\* and a minimum rate of \$60.00/hr\*.

To activate the hourly rate and to allow claims to be processed, or to notify PALFINGER of a change in posted shop rate, the contracting partner must email their official shop rate on their company letterhead accompanied with a photograph of the posted shop rate. If no notification of shop rate is received, the minimum rate will be used. The Repair Date, not the Claim Date shall be used in determining the labor rate that can be claimed.

*\*For contracting partners in Canada, the above dollar values are in Canadian Dollars. For contracting partners in United States, Mexico, Central America, Caribbean, and South America the values are in United States Dollars.*