

Ring Power®



Ring Power Corporation

500 World Commerce Parkway

St. Augustine, FL 32092

Prepared For:
Florida Sheriff's Association

8/14/2020

Item #305: Epsilon S260L130 Canal Cleaning Unit

CONTRACT DETAILS

Florida Sheriff's Association

Bid # FSA20-EQU18.0

Item #305: Group: Refuse and Waste Collection Bodies & Trailer Mounted Equipment

Contract Dates: October 1, 2020 through September 30, 2023

BID SPECIFICATION:

NOTE: REFUSE BODIES REQUIRE SEPARATE PURCHASE OF CAB AND CHASSIS. Trailer mounted units must be sized and consistent with manufacturer GVWR ratings and other specifications for the mounted refuse equipment and payload. Must include all of the OEM standard equipment and be equipped with all LED lighting, and must meet all DOT and FMVSS safety standards. The completed unit must be delivered to the purchaser in a "ready to work" condition. This equipment is used collect Municipal Solid Waste (MSW) , Commercial Solid Waste (CSW), and Recycling and Vegetation.

BASE MACHINE

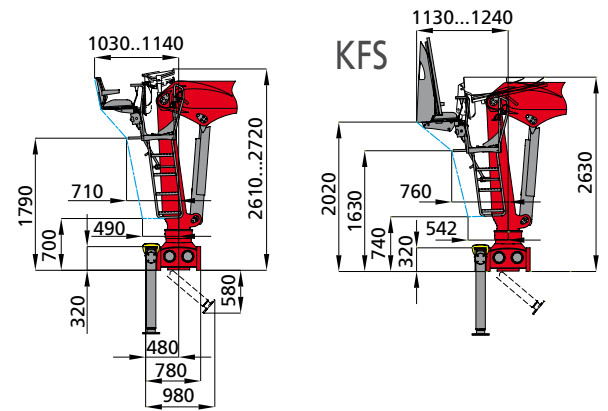
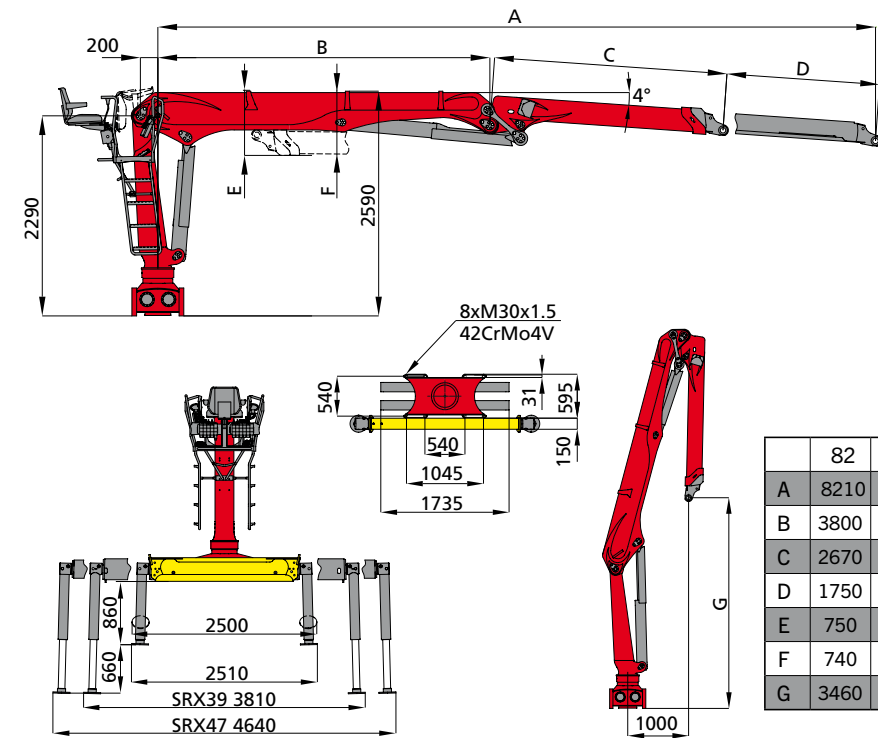
S260LSTD Complete structural, hydraulic and electrical installation of S260L loader, including:
Loader mounted behind cab on rectangular steel tube riser with 3/8" tie down plates
Auxiliary stabilizer and control valve installation with electrical switch at control valve to divert flow for auxiliary stabilizer function
Hotshift PTO with direct mount hydraulic pump
Palfinger 79 gallon steel hydraulic tanks with in tank return filter, 2" shut off valve and 46 weight hydraulic oil
Frame mounted hydraulic oil cooler, 26.8 HP, 20.0 kW heat removal
Continental hydraulic hose and fittings
Weatherproof electrical junction box with DIN rail mounted mini-breaker for crane power and throttle relay, solenoid activated with PTO switch
Throttle control switch at topseat wired to throttle relay in junction box with relay connected to truck remote PTO interface plug (if supplied)
Kinshofer HPXDrive grapple head with 70" perforated shells and bolt on side plates
22' BeauRoc MPHD dump body (44 cu.yd.) with 84" sides and cut down at front of body to 60" height
1/4" HARDOX 450 floor, 3/16" HARDOX 450 front and sides, 5/32" HARDOX 450 rear door
Single swing rear body door
Front mounted telescopic hoist
Body painted gloss black enamel

	Manual body control valve mounted on driver side frame rail with in cab switched electric diverter to divert hydraulic function between loader and body
	LED body light package - 3/4" marker and 3 light bar lights with 4" round stop/turn/tail and reverse lights in sealed boxes on bottom rear corners of body
	LED strobe lights, cab switched, featuring flange mounted strobe lights in front grill / bumper and outside edge of rear light boxes
	Steel tube ICC bumper uprights and cross beam
	Spring loaded, frame mounted mudflap brackets with mudflaps
	18'X18"X36" black steel toolbox, frame mounted
	(BS055 + KSZ00178A) Auxiliary stabilizer beam with 17' 10" spread and fixed hydraulic stabilizers with LED light package and stand along control valve (CNDI8060AJI)
	(EZ2189-500 + EZ2236-500 (x4)) (4) 19 3/4" square composite slide under stabilizer pads with rope handles and galvanized, lockable storage brackets
	All DOT and function decals
	QR code equipment management system labeling
	Complete load and stability testing
	Epsilon S260-270 L-Series Hydraulic Loader
	Classification HC1/HD4/B4
	Net slewing torque: 28,760 ft-lbs.
2K	Double circuit Control valve Parker H170CF - Recommended flow: 24-gpm (2x)
	Operating pressure: S260-4,060-psi, S270-3,770-psi
	Four (4) LED work lights, completely wired and protected
	Throttle check valves on lifting, outer boom, and telescopic cylinders
	Rotation angle 385°
	Linkage system between main and outer boom
	Main boom cylinder protection
	KTL primer, RAL 3020 "Epsilon Red" powder coating
	Mounting bolts kit
Docs	Operator manual. Spare parts manual. Service manual
130	S260L130: Maximum lifting moment 150,460 ft-lbs. Boom length 42' 8"
HKRA-F130	Comfort drive operating system with Parker F130 control valve (GPM 2 x 21)
AX2	Independent "out and down" stabilizers (second cylinder shipped loose - requires installation)
1S	Valve section for AX2 option
LHV	Load holding valves on main- outer- telescopic cylinder and slewing
GUR	Seat Belt - The seat belt is according to EN12999, not compulsory
SRX47	Stabilizer bridge shipped loose - 15' 4" stabilizer spread

**Q5200L/S220L
S240L HPLS/S260L
S290L HPLS/S270L
S300L HPLS**

WWW.PALFINGEREPSILON.COM






	82	87	97	102	107	109	128	130	83	88	98	103
A	8210	8710	9670	10170	10690	10870	12800	13030	8350	8850	9800	10300
B	3800	4300	3800	4300	4900	5000	6800	6800	3930	4430	3930	4430
C	2670	2670	2720	2720	2630	2720	6000	4490	2660	2660	2720	2720
D	1750	1750	3160	3160	3160	3160	-	1750	1750	1750	3160	3160
E	750	760	820	820	-	820	700	770	760	760	820	820
F	740	740	790	790	-	790	690	740	740	740	790	790
G	3460	3940	3410	3900	4570	4580	3070	4580	3480	3970	3430	3920

82	S220L82	5090	4090	3400	2920	2540 kg
	S240L82	5720	4590	3820	3270	2840 kg
	S260L82	5880	4720	3940	3370	2940 kg
	S290L82	6590	5300	4420	3790	3290 kg
		4m	5m	6m	7m	8m

97	S260L97	5720	4570	3800	3240	2820	2500 kg
	S290L97	6430	5150	4280	3650	3190	2650 kg
		4m	5m	6m	7m	8m	9m

102	S260L102	5620	4490	3720	3180	2760	2450	2180 kg
109	S290L102	6330	5060	4210	3590	3130	2770	2330 kg
	S260L109	5460	4360	3620	3090	2680	2370	2130 kg
	S290L109	6170	4930	4100	3500	3040	2690	2420 kg
		4m	5m	6m	7m	8m	9m	10m

83	S270L83	6200	4950	4110	3510	3060 kg
	S300L83	7000	5590	4640	3970	3420 kg
		4m	5m	6m	7m	8m

98 103		S270L98	6040	4800	3980	3380	2940	2550 kg	
		S300L98	6840	5450	4510	3850	3340	2750 kg	
		S270L103	5940	4720	3900	3320	2880	2540 kg	
		S300L103	6740	5360	4430	3780	3280	2900 kg	
			4m	5m	6m	7m	8m	9m	10m

128	S260L128	5200	4160	3460	2960	2580	2280	2040	1850	1690 kg
		4m	5m	6m	7m	8m	9m	10m	11m	12m

87	S260L87	5780	4640	3860	3310	2890 kg
	S290L87	6490	5220	4350	3730	3250 kg
		4m	5m	6m	7m	8m

107	QS200L107	4500	3590	2980	2540	2210	1950	1750 kg
		4m	5m	6m	7m	8m	9m	10m

130	S260L130	5100	4070	3380	2880	2500	2200	1970	1770	1610 kg
		4m	5m	6m	7m	8m	9m	10m	11m	12m

88	S270L88	6110	4870	4040	3450	3010 kg
	S300L88	6900	5510	4580	3910	3410 kg
		4m	5m	6m	7m	8m

		QS200L	S220L	S240L ^{HPLS}	S260L							S290L ^{HPLS}					S270L				S300L ^{HPLS}			
		107	82	82	82	87	97	102	109	128	130	82	87	97	102	109	83	88	98	103	83	88	98	103
ONROAD RECYCLING																								
	[kNm]	180	205	230	236	232	229	225	218	208	204	265	261	258	253	246	248	244	242	238	280	276	274	270
	[kNm]	34	36		39																			
	[°]	385																						
	[m]	10,7	8,2	8,2	8,2	8,7	9,7	10,2	10,9	12,8	13,0	8,2	8,7	9,7	10,2	10,9	8,3	8,8	9,8	10,3	8,3	8,8	9,8	10,3
	[bar]	270	280	280 (310)	280							280 (310 HPLS)					260				260 (290 HPLS)			
	2K [l/min]	2 x 80	2 x 90																					
	[kg]	2370	2220	2230	2360	2410	2520	2570	2640	2660	2750	2370	2420	2530	2580	2650	2500	2540	2660	2710	2510	2550	2670	2720
	SRX39 [kN]	157	164	176	187							199					189				206			
	SRX47 [kN]	127	133	143	151							161					153				167			

GUARANTEE AND WARRANTY GUIDELINES

General section

PALFINGER



APPENDIX 3: Product specific Guarantee and Warranty Guidelines

Timber & Refuse Loaders

1. Guarantee and Warranty periods

PALFINGER grants to the contract partner the following guarantee and warranty periods (in each case the condition which occurs first is decisive; wear and tear parts are always excluded):

- 12 months or 1000 operating hours full guarantee; and
- 24 months or 2000 operating hours guarantee on load bearing parts;
- 36 months or 3000 operating hours guarantee for material costs (excluding worktime) for load bearing parts, excluding grab housing and grab arms

The guarantee and warranty period begins in general upon handover to the end customer but in no case any later than 6 months upon delivery from PALFINGER to the contract partner.

2. Load bearing parts

Load bearing parts are defined welding constructions which are not subject to natural wear and tear.

- Base
- Extension box
- Crane column
- Main boom
- Outer boom
- Extension booms
- Cylinder tubes
- Grab housing (only Epsilon wood grabber)
- Grab arms (only Epsilon wood grabber)
- Power link
- Turntable
- Outtrigger box (SRX39 and SRX47)

3. Wear and tear parts

Wear and tear parts are such parts which during normal operation become subject to natural wear and tear; Defects of materials or installation faults are not considered wear and tear.

Wear and tear parts include in particular:

- guide blocks
- bearings
- bearing bushes



- seals
- protection hoses
- fuses, lamp holders
- stickers

4. Seals and settings

Seals on the PALFINGER product may be removed only by qualified specialists from an authorized PALFINGER dealer and upon prior consultation of PALFINGER. In the event of the removal of the original seal the form A1 must be completed, duly executed and sent to PALFINGER (Fax, email etc.). The undersigned company shall be liable for the correct pressure setting and pump capacity of the crane.

All settings of valves by the body manufacturer (e.g. on the variable pump or the control valve, if the PALFINGER product was delivered by PALFINGER without such control valve) shall be made in accordance with manufacturer's specifications and a seal must be correctly applied (with a registered tool).

PALFINGER must be notified of the settings with form A1.

5. Extended guarantee

With the purchase of the optional extended warranty program listed in the most current Palfinger Price List, the standard warranty can be extended to a maximum period of 24 months. The optional extended warranty must be purchased with the Loader to be valid. The extended warranty becomes void if the contracting partner does not register the Loader within the time limit set out in the main section of the Guarantee & Warranty Guidelines.

- Maximum 1000 operating hours per year.
- The extended warranty program does not extend to hydraulic pumps and attachments such as grabs, rotators, pallet forks, etc..

This extended warranty excludes the painting (KTL/powder coating), PEC equipment, accumulators/batteries, and wear and tear parts pursuant to point 3.

6. Subsequent purchase of guarantee

PALFINGER grants the possibility to subsequently purchase an extension of the full guarantee for a product that was already handed over pursuant to point 5 (Extended guarantee)

This option for a purchase is only possible within 9 months upon the date of delivery (by PALFINGER).

7. Freight Allowance

Transport costs of spare parts supplied and used in a warranty repair will be reimbursed, when properly claimed, as a Freight Allowance, at a flat rate of 10% of the net value of reimbursed parts.



8. Hourly Rate Schedule

For all contracting partners, as a minimum PALFINGER warranty reimburses 100% of the contracting partner's posted shop labor rate with a maximum rate of \$100.00/hr* and a minimum rate of \$60.00/hr*.

To activate the hourly rate and to allow claims to be processed, or to notify PALFINGER of a change in posted shop rate, the contracting partner must email their official shop rate on their company letterhead accompanied with a photograph of the posted shop rate. If no notification of shop rate is received, the minimum rate will be used. The Repair Date, not the Claim Date shall be used in determining the labor rate that can be claimed.

**For contracting partners in Canada, the above dollar values are in Canadian Dollars. For contracting partners in United States, Mexico, Central America, Caribbean, and South America the values are in United States Dollars.*