



Ring Power Corporation
500 World Commerce Parkway
St. Augustine, FL 32092

Prepared For:
Florida Sheriff's Association

8/5/2020

Item #180: (1) NEW CATERPILLAR 926M WHEEL LOADER

CONTRACT DETAILS

Florida Sheriff's Association
Bid # FSA20-EQU18.0
Item #180: Group: LOADER: 3.0 CY YD Wheel Loader and Options
Contract Dates: October 1, 2020 through September 30, 2023

BID SPECIFICATION:

1. ENGINE/CAB: a. Diesel engine, six cylinder, four cycle, liquid cooled, minimum 140 SAE Net HP b. Cab with A/C 2. TRANSMISSION: a. Power shift transmission with torque converter or hydrostatic drive, minimum of four forward and three reverse speeds. 3. DRIVETRAIN: a. Four wheel drive. b. Manufacturer's standard axle. c. Inboard or outboard mounted wet disc braking system. d. Inboard or outboard mounted planetary final drives. e. 20.5 – 25 Bias ply tires mounted on multi piece rims. 4. LOADER: a. 3.0 cu. yd. general purpose bucket with bolt on cutting edge. b. Bucket position indicator. c. Automatic return to dig. d. Rear drawbar. e. Gauges and indicators: visual hydraulic oil level indicator, electronic monitor display of all fluid levels and temperatures. f. Deluxe suspension seat with foam padding and backrest. g. Articulated steering, 40 degrees minimum each direction h. Wheelbase of at 9 feet, 4 inches minimum i. Minimum operating weight of 26,000 lbs. 5. ELECTRICAL: a. 12 or 24 volt electrical system. b. Manual battery disconnect switch. c. Driving lights, front and rear work lights, stop lights, warning lights and tail lights.

BASE MACHINE

| | |
|----------|--------------------------|
| 541-2670 | 926M WHEEL LOADER |
| 430-2943 | PREP PACK, UNITED STATES |
| 430-2996 | STEERING, STANDARD |
| 333-6529 | DIFFERENTIAL, OPEN REAR |
| 536-5320 | ENVIRONMENT, STANDARD |
| 454-0609 | WEATHER, STANDARD |
| 527-0422 | ENGINE - AR |
| 541-3071 | HYD,2V,PIN-ON,STD LIFT |
| 536-5281 | HYDRAULICS, STANDARD, SL |
| 536-5329 | LINES, AUX 3RD, NONE |
| 536-5339 | JUMPER LINES, NONE |

| | |
|----------|--------------------------------|
| 488-1112 | LIGHTS, STD HALOGEN |
| 541-3066 | LIGHTS, ROADING, HALOGEN, RH |
| 536-5308 | CAB, STANDARD |
| 563-5966 | SEAT, STANDARD |
| 342-0130 | RADIO, READY |
| 565-0908 | PRODUCT LINK, CELLULAR PL641 |
| 366-6896 | TIRES, 20.5R25 MX XTLA * L2 |
| 366-8148 | FENDERS, STANDARD |
| 348-2579 | COUNTERWEIGHT, STANDARD |
| 519-8081 | TOOLBOX, AUX, NONE |
| 0P-2491 | KIT,SERIALIZED TECHNICAL MEDIA |
| 345-2822 | BUCKET, GP, 3.0YD3, PO |
| 8E-4566 | CUTTING EDGE, BOLT ON(4 PIECE) |

Ring Power Corporation



Cat[®] 926M

WHEEL LOADER

M SERIES — MAKING YOUR CHOICE EASY:

■ **Enjoy All Day Comfort** – Have a seat in the new M Series Small Wheel Loader and enjoy automatic temperature control, class leading sound levels, and low-effort joystick controls that move with you on a fully adjustable seat suspension. A large spacious operator environment combined with Caterpillar's hydraulic cylinder damping and smooth predictable controls make this the most comfortable seat on your job site.

■ **Work Made Easy** – Move more with Caterpillar's patented quick loading Performance Series buckets and optimized Z-bar linkage with enhanced forward visibility that combines the digging efficiency of a traditional Z-bar with tool carrier capabilities. The parallel lift and high tilt forces throughout the working range allow you to confidently handle loads with precise control.

Multi-function work has never been easier with dedicated pumps for each system and a flow sharing implement valve governed by an intelligent power management system. Simultaneously lift, steer and drive without compromise. The M Series Small Wheel Loader simply does what you ask it to do.

■ **Efficiently Powerful** – Experience hybrid like fuel efficiency with an intelligent hydrostatic power train and industry leading fuel savings through a lower maximum engine speed of just 1,600 rpm in Standard Mode. Power when you need it with Caterpillar's exclusive Power-by-Range technology that increases power in Range 4 for improved speed on grade. For your toughest and most demanding applications a new Performance Mode will allow you to boost the power and hydraulic speed in all ranges to get the job done even quicker. Meets U.S. EPA Tier 4 Final/EU Stage V emission standards with a Cat[®] C7.1 engine that is designed to manage itself so you can concentrate on your work.

■ **Customize Your Experience** – Meet your application requirements and individual preferences with Caterpillar's industry first Hystat[™] Operator Modes featuring four unique power train settings. Select classic Torque Converter for smooth rollout, conventional Hystat for aggressive engine braking, an Ice Mode that maximizes your control on slippery underfoot, or default mode which blends the best of Hystat and Torque Converter characteristics. Fine tune machine performance with adjustments at your fingertips through the soft touch buttons and optional secondary display. Quickly set hydraulic response along with linkage kick-out positions, maximum wheel torque, and peak ground speed to efficiently perform a multitude of tasks.

Specifications

Engine

| Engine Model | Cat C7.1** | | | |
|----------------------|---------------|--------|------------------|--------|
| Power Mode | Standard Mode | | Performance Mode | |
| Speed Range | Range 1-3* | | Range 1-4 | |
| Maximum Gross Power | | | | |
| Maximum Engine Speed | 1,600 rpm | | 1,800 rpm | |
| ISO 14396 | 119 kW | 160 hp | 135 kW | 168 hp |
| ISO 14396 (DIN) | 125 kW | 170 hp | 125 kW | 170 hp |
| Rated Net Power | 1,600 rpm | | 1,800 rpm | |
| SAE J1349 at | | | | |
| Minimum Fan Speed | 116 kW | 156 hp | 122 kW | 163 hp |
| ISO 9249 at | | | | |
| Minimum Fan Speed | 116 kW | 156 hp | 122 kW | 164 hp |
| ISO 9249 (DIN) at | | | | |
| Minimum Fan Speed | 107 kW | 144 hp | 113 kW | 151 hp |

Engine (continued)

| | Standard Mode | | Performance Mode | |
|----------------------|---------------|------------|------------------|------------|
| Maximum Gross Torque | | | | |
| ISO 14396 | 795 N·m | 586 lbf·ft | 815 N·m | 601 lbf·ft |
| Maximum Net Torque | | | | |
| SAE J1349 | 777 N·m | 573 lbf·ft | 797 N·m | 588 lbf·ft |
| ISO 9249:2007 | 776 N·m | 572 lbf·ft | 796 N·m | 587 lbf·ft |
| Displacement | 7.01 L | 427 in³ | 7.01 L | 427 in³ |

• Net power ratings are tested at the reference conditions for the specified standard and denote power available at the flywheel when the engine is equipped with alternator, air cleaner, emission components and fan at specified speed.

• No derating required up to 3000 m (10,000 ft) altitude. Auto derate protects hydraulic and transmission systems.

*Range 4 power and torque is equal to Performance Mode with Caterpillar Power by Range technology.

**The Cat C7.1 engine meets Tier 4 Final/Stage V off-highway emission standards.



926M Wheel Loader

Buckets

| | | |
|-------------------------------------|------------|-------------|
| Bucket Capacities – General Purpose | 1.9-2.5 m³ | 2.5-3.2 yd³ |
| Bucket Capacities – Light Material | 3.1-5.0 m³ | 4.0-6.5 yd³ |

Steering

| | | |
|---|-------------|---------------|
| Steering Articulation Angle (each direction) | 40° | |
| Maximum Flow – Steering Pump | 130 L/min | 34 gal/min |
| Maximum Working Pressure – Steering Pump | 24 130 kPa | 3,500 psi |
| Maximum Steering Torque: | | |
| 0 degrees (straight machine) | 50 375 N·m | 37,155 lbf·ft |
| 40 degrees (full turn) | 37 620 N·m | 27,747 lbf·ft |
| Steering Cycle Times (full left to full right): | | |
| At 1,800 rpm: 90 rpm steering wheel speed | 2.4 seconds | |
| Number of Steering Wheel Turns – full left to full right or full right to full left | 3.5 turns | |

Loader Hydraulic System

| | | |
|---|---------------|------------------|
| Maximum Flow – Implement Pump | 150 L/min | 40 gal/min |
| 3rd Function Maximum Flow* | 150 L/min | 40 gal/min |
| 4th Function Maximum Flow* | 150 L/min | 40 gal/min |
| Maximum Working Pressure – Implement Pump | 26 000 kPa | 3,771 psi |
| Relief Pressure – Tilt Cylinder | 28 000 kPa | 4,061 psi |
| 3rd and 4th Function Maximum Working Pressure | 26 000 kPa | 3,771 psi |
| 3rd and 4th Function Relief Pressure | 28 000 kPa | 4,061 psi |
| Hydraulic Cycle Times: | Standard Mode | Performance Mode |
| | at 1,600 rpm | at 1,800 rpm |
| Raise (ground level to maximum lift) | 6.2 seconds | 5.5 seconds |
| Dump (at maximum lift height) | 1.7 seconds | 1.5 seconds |
| Float Down (maximum lift to ground level) | 2.6 seconds | 2.6 seconds |
| Total Cycle Time | 10.5 seconds | 9.5 seconds |

*3rd and 4th function flow is fully adjustable from 20% to 100% of maximum flow through the secondary display, when equipped.

Service Refill Capacities

| | | |
|-----------------------------------|-------|----------|
| Fuel Tank | 195 L | 51.5 gal |
| Cooling System | 30 L | 7.9 gal |
| Engine Crankcase | 20 L | 5.3 gal |
| Transmission (gearbox) | 8.5 L | 2.2 gal |
| Axles: | | |
| Front | 26 L | 6.9 gal |
| Rear | 25 L | 6.6 gal |
| Hydraulic System (including tank) | 160 L | 42.3 gal |
| Hydraulic Tank | 90 L | 23.8 gal |
| Diesel Exhaust Fluid (DEF) Tank | 19 L | 5 gal |

- DEF used in Cat SCR systems must meet the requirements outlined in the International Organization for Standardization (ISO) standard 22241-1.

Transmission

| | | |
|----------------------|-----------|-----------|
| Forward and Reverse: | | |
| Range 1* | 1-13 km/h | 0.6-8 mph |
| Range 2 | 13 km/h | 8 mph |
| Range 3 | 27 km/h | 17 mph |
| Range 4 | 40 km/h | 25 mph |

*Creeper control allows maximum speed range adjustability from 1 km/h (0.6 mph) to 13 km/h (8 mph) in Range 1 through the secondary display, when equipped. Factory default is 7 km/h (4.4 mph).

Tires

| | | |
|------------------------|------------------------|-------------------------|
| Standard Size | 20.5 R25, radial (L-3) | |
| Other Choices Include: | 20.5 R25, radial (L-2) | 17.5 R25, radial (L-2) |
| | 20.5 R25, radial (L-5) | 17.5 R25, radial (L-3) |
| | 20.5-25 12PR (L-2) | 17.5 R25, radial (L-5) |
| | 20.5-25 12PR (L-3) | 550/65 R25 radial (L-3) |
| | 20.5-25 16PR (L-5) | Skidder/Agriculture |

- Other tire choices are available. Contact your Cat dealer for details.
- In certain applications, the loader's productive capabilities may exceed the tire's tonnes-km/h (ton-mph) capabilities.
- Caterpillar recommends that you consult a tire supplier to evaluate all conditions before selecting a tire model.

Cab

| | |
|------|------------------------|
| ROPS | ISO 3471:2008 |
| FOPS | ISO 3449:2005 Level II |

- Cab and Rollover Protective Structures (ROPS) are standard in North America and Europe.
- The declared dynamic operator sound pressure levels per ISO 6396:2008*, when properly installed and maintained, are:
 - Standard cab: 68 ±3 dB(A)
 - Deluxe cab: 66 ±2 dB(A)

*The measurements were conducted with the cab doors and windows closed and at 70% of the maximum engine cooling fan speed. The sound level may vary at different engine cooling fan speeds.

Sound

| | |
|---|-----------|
| Operator Sound Pressure (ISO 6396:2008) | 72 dB(A) |
| Average Exterior Sound Pressure (ISO 6395:2008) | 101 dB(A) |

- European Union Directive "2000/14/EC."

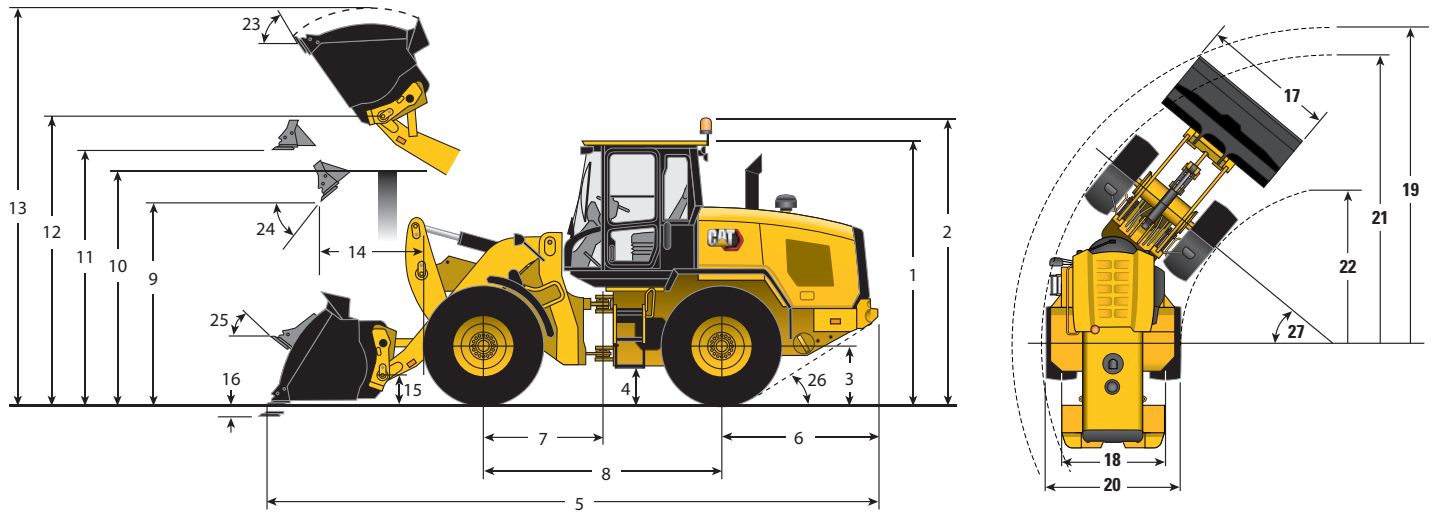
Axles

| | |
|-------|--------------------------------------|
| Front | Fixed |
| | Locking differential (standard) |
| Rear | Oscillating ±11 degrees |
| | Open differential (standard) |
| | Limited slip differential (optional) |

Air Conditioning System

The air conditioning system on this machine contains the fluorinated greenhouse gas refrigerant R134a (Global Warming Potential = 1430). The system contains 1.9 kg of refrigerant which has a CO₂ equivalent of 2.717 metric tonnes.

Dimensions and Operating Specifications (All dimensions are approximate. Dimensions vary with bucket and tire choice.)



| | Standard Lift | | High Lift | |
|--|---------------|-----------|------------|-----------|
| ** 1 Height: Ground to Cab | 3340 mm | 10' 11" | 3340 mm | 10' 11" |
| ** 2 Height: Ground to Beacon | 3707 mm | 12' 2" | 3707 mm | 12' 2" |
| ** 3 Height: Ground to Axle Center | 685 mm | 2' 3" | 685 mm | 2' 3" |
| ** 4 Height: Ground Clearance | 397 mm | 1' 4" | 397 mm | 1' 4" |
| * 5 Length: Overall | 7383 mm | 24' 3" | 8060 mm | 26' 5" |
| 6 Length: Rear Axle to Bumper | 1953 mm | 6' 5" | 1953 mm | 6' 5" |
| 7 Length: Hitch to Front Axle | 1500 mm | 4' 11" | 1500 mm | 4' 11" |
| 8 Length: Wheel Base | 3000 mm | 9' 10" | 3000 mm | 9' 10" |
| * 9 Clearance: Bucket at 45 degrees | 2881 mm | 9' 5" | 3378 mm | 11' 1" |
| ** 10 Clearance: Load over Height | 3351 mm | 11' 0" | 3550 mm | 11' 8" |
| ** 11 Clearance: Level Bucket | 3576 mm | 11' 9" | 4073 mm | 13' 4" |
| ** 12 Height: Bucket Pin | 3903 mm | 12' 10" | 4400 mm | 14' 5" |
| ** 13 Height: Overall | 5072 mm | 16' 8" | 5569 mm | 18' 3" |
| * 14 Reach: Bucket at 45 degrees | 928 mm | 3' 1" | 1261 mm | 4' 2" |
| 15 Carry Height: Bucket Pin | 382 mm | 1' 3" | 582 mm | 1' 11" |
| ** 16 Dig Depth | 100 mm | 3.9" | 135 mm | 5.3" |
| 17 Width: Bucket | 2550 mm | 8' 4" | 2550 mm | 8' 4" |
| 18 Width: Tread Center | 1930 mm | 6' 4" | 1930 mm | 6' 4" |
| 19 Turning Radius: Over Bucket | 5903 mm | 19' 4" | 6226 mm | 20' 5" |
| 20 Width: Over Tires | 2540 mm | 8' 4" | 2540 mm | 8' 4" |
| 21 Turning Radius: Outside of Tires | 5402 mm | 17' 9" | 5402 mm | 17' 9" |
| 22 Turning Radius: Inside of Tires | 2851 mm | 9' 4" | 2851 mm | 9' 4" |
| 23 Rack Angle at Full Lift | 53 degrees | | 51 degrees | |
| 24 Dump Angle at Full Lift | 50 degrees | | 49 degrees | |
| 25 Rack Angle at Carry | 41 degrees | | 47 degrees | |
| 26 Departure Angle | 33 degrees | | 33 degrees | |
| 27 Articulation Angle | 40 degrees | | 40 degrees | |
| * Tipping Load – Straight (ISO 14397-1) | 8879 kg | 19,574 lb | 6520 kg | 14,373 lb |
| * Tipping Load – Full Turn (ISO 14397-1) | 7599 kg | 16,752 lb | 5524 kg | 12,178 lb |
| * Breakout | 11 557 kg | 25,477 lb | 9714 kg | 21,414 lb |
| * Operating Weight | 12 789 kg | 28,193 lb | 13 229 kg | 29,163 lb |

*Vary with bucket.

**Vary with tire.

Dimensions listed are for a machine configured with 1.9 m³ (2.5 yd³) general purpose Fusion™ bucket, bolt-on cutting edge, heavy counterweights, additional guarding, 80 kg (176 lb) operator and 20.5 R25 (L-3) XHA2 tires.

926M Wheel Loader

STANDARD EQUIPMENT

POWER TRAIN

- Axle Duo-Cone™ seal guards
- Auto idle shut down feature
- Cat C7.1 engine
 - Power modes (Standard and Performance)
 - Power by range (High Power in Range 4)
 - Turbocharged and aftercooled
 - Diesel particulate filter (Fit for Life)
- Coded start (requires secondary display)
- Differential lock in front axle
- Enclosed wet disc full hydraulic brakes
- Hydraulically driven demand cooling fan
- Hydrostatic transmission with electronic control
 - Operator modes (Default, TC, Hystat, and Ice)
 - Directional Shift Aggressiveness (fast, medium, slow)
 - Rimpull control, adjust wheel torque
 - Creeper control, adjust ground speed
- Parking brake, electric
- Single plane cooling package wide six fins per inch density
- Oil sampling ports
- Throttle lock and max speed limiter

HYDRAULICS

- Automatic lift lower and tilt kickouts, adjustable in-cab
- Bucket and fork modes, adjustable in-cab
- Cylinder damping at kickout and mechanical end stops
- Fine mode control (fast, medium, slow)
- Hydraulic response setting (fast, medium, slow)
- Load sensing hydraulics and steering
- Seat-mounted hydraulic joystick controls

ELECTRICAL

- Alternator, 115 amp, heavy duty
- Batteries, 1,000 CCA (2) 24V system, disconnect switch
- Back-up alarm
- Emergency shutdown switch
- Halogen work and roading lights, LED rear tail lights
- Product Link™ PRO with three year subscription
- Remote jump start post
- Resettable main and critical function breakers

OPERATOR ENVIRONMENT

- 75 mm (3 in) High-Vis retractable seat belt, with audible alarm and indicator
- Automatic temperature control
- Cab, pressurized
- Camera, rearview, with dedicated display
- External heated mirrors with lower parabolic
- Ground level cab door release
- Hydraulic control lockout
- Mirror, single
- Lunch box storage
- Radio ready speakers
- Rear window defrost, electric
- Column mounted multi function control – lights, wipers, turn signal
- Tilt and telescopic steering wheel
- Tinted front glass
- Wet arm wiper/washer, 2-speed and intermittent, front, lights, wipers, turn signal
- Suspension seat, fabric

OTHER STANDARD EQUIPMENT

- Large-access enclosure doors with adjustable close/open force
- Cat optimized Z-bar linkage with parallel lift
- Recovery hitch, with pin
- Remote mounted lubrication points
- Lockable compartments and enclosures

EU STANDARD EQUIPMENT

- Deluxe cab
- Secondary display
- Rearview camera

OPTIONAL EQUIPMENT

- Autolube, integrated in secondary display
- Auxiliary flow, third and fourth function
- Differential, limited slip, rear
- Beacon light, strobe
- Cab, deluxe (standard in Europe)
 - Camera, rearview integrated into advanced display
 - Electrically adjustable external heated mirrors (2)
 - Secondary display to enable features and adjust parameters
 - LED interior lighting
 - Sunscreen, front and rear
 - Touchscreen secondary display
 - Ride control adjustable speed activation
 - Preventative maintenance reminders
 - Integrated help function (26 languages)
- Camera, roof mounted, front view with separate display*
- Cold start package
 - Ether starting aid, block heater and additional batteries, 1,000 CCA (4 total)
- Counterweight, additional options
- Coupler, (Fusion and ISO 23727)
- Debris packages (low, medium, high)
- Fenders (extended cover and full coverage)
- Guarding packages
- Linkage, high lift
- Lights, auxiliary, halogen or LED with engine and DEF compartment lights
- Payload Technology
 - Cat Production Measurement (CPM)
 - CPM Printer
- Product Link ELITE with capabilities for software push, data logging, histogram and trend mapping
- Radio packages
- Rear Object Detection
- Ride Control System, adjustable through secondary display
- Seats
 - Deluxe seat – fully adjustable fabric air suspension seat with mid seat backrest
 - Premium seat – fully adjustable leather and fabric air suspension with high backrest and air lumbar support. Seat is heated and ventilated on bottom cushion and backrest.
- Steering
 - Dual mode and secondary
- Tire Pressure Monitoring (TPM)

*NOTE: Not all features are available in all regions.

For more complete information on Cat products, dealer services, and industry solutions, visit us on the web at www.cat.com

© 2020 Caterpillar
All rights reserved

Materials and specifications are subject to change without notice. Featured machines in photos may include additional equipment. See your Cat dealer for available options.

CAT, CATERPILLAR, LET'S DO THE WORK, their respective logos, "Caterpillar Corporate Yellow," the "Power Edge" and Cat "Modern Hex" trade dress as well as corporate and product identity used herein, are trademarks of Caterpillar and may not be used without permission.

AEHQ7361-02 (05-2020)
Replaces AEHQ7361-01
(NACD, EU)



Effective with sales to the first user on or after January 1, 2018

CATERPILLAR LIMITED WARRANTY

Earthmoving, Construction, Material Handling, Forestry and Paving Machines

Worldwide

Caterpillar Inc. or any of its subsidiaries ("Caterpillar") warrants the following new products sold by it to be free from defects in material and workmanship:

- Earthmoving, construction, material handling, forestry and paving machines (except as listed below).
- Attachments/work tools installed on such machines prior to delivery (unless covered by the Cat® Work Tool warranty statement or another manufacturer's warranty). Hammer tool points and compacting plates used on hydraulic hammers are not warranted.

Additional warranties are applicable against breakage for certain Cat Ground Engaging Tools and for wear on all landfill compactor tips. Refer to the applicable warranty statements for coverage detail.

This warranty does not apply to:

- Cat Batteries
- Mobil-trac belts, rubber tracks used on multi terrain loaders, compact track loaders, and mini hydraulic excavators
- Cat Work Tools
- 424 Backhoe Loaders, 216 and 226 Skid Steer Loaders, and 320 Excavators sold in India
- Prentice brand forestry machines
- Longwall mining machines
- 785, 789, 793, 794, 795, 797 Off-Highway Truck models sold in regions other than the Commonwealth of Independent States ("CIS")
- 24 Motor Grader models sold in regions other than the CIS
- 854, 992, 993, 994 Wheel Loader models sold in regions other than CIS
- Cat Utility Vehicles (UTV)
- Compact Construction Equipment including Compact Track & Multi Terrain Loaders, Mini Hydraulic Excavators, and Skid Steer Loaders sold in USA or Canada.

These products are covered by other Caterpillar warranties.

This warranty is subject to the following:

Warranty Period

For new machines and work tools/attachments the warranty period is 12-months/unlimited hours, starting from date of delivery to the first user.

Note:

- For hydraulic line's quick connect/disconnect components sold on compact wheel loaders, mini hydraulic excavators, skid steer loaders, multi terrain loaders, and compact track loader machines, the warranty period is 50 hours starting from the date of delivery to the first user.
- For Draglines, Electric Rope Shovels, Hard Rock Movers, Hard Rock Feeders, Hard Rock Miners, Hard Rock Conveyors, Hard Rock Roof Supports: the warranty period is not to exceed 24 months from shipment of the last major component from the Caterpillar place of manufacture.

Caterpillar Responsibilities

If a defect in material or workmanship is found during the warranty period, Caterpillar will, during normal working hours and at a place of business of a Cat dealer or other source approved by Caterpillar

- Provide (at Caterpillar's choice) new, remanufactured, or Caterpillar approved repaired parts or assembled components needed to correct the defect.

Note: New, remanufactured, or Caterpillar approved replacement parts provided under the terms of this warranty are warranted for the remainder of the warranty period applicable to the product in which installed as if such parts were original components of that product. Items replaced under this warranty become the property of Caterpillar.

- Replace lubricating oil, filters, antifreeze, and other service items made unusable by the defect.
- Provide reasonable and customary labor needed to correct the defect.

User Responsibilities

The user is responsible for:

- Providing proof of delivery date to the first user.
- Labor costs, except as stated under "Caterpillar Responsibilities."
- Transportation costs, except as stated under "Caterpillar Responsibilities."
- Premium or overtime labor costs.
- Parts shipping charges in excess of those that are considered usual and customary.
- Local taxes, if applicable.
- Costs to investigate complaints, unless the problem is caused by a defect in Caterpillar material or workmanship.
- Giving timely notice of a warrantable failure and promptly making the product available for repair.
- Performance of the required maintenance (including use of proper fuel, oil, lubricants, and coolant) and items replaced due to normal wear and tear.
- Allowing Caterpillar access to all electronically stored data.

Limitations

Caterpillar is not responsible for:

- Failures resulting from any use or installation that Caterpillar judges improper.
- Failures resulting from attachments, accessory items, and parts not sold or approved by Caterpillar.
- Failures resulting from abuse, neglect, and/or improper storage or repair.
- Failures resulting from user's delay in making the product available after being notified of a potential product problem.
- Failures resulting from unauthorized repair or adjustments, and unauthorized fuel setting changes.

continued...

This warranty covers every major component of the products. Claims under this warranty should be submitted to a place of business of a Cat dealer or other source approved by Caterpillar. For further information concerning either the location to submit claims or Caterpillar as the issuer of this warranty, write Caterpillar Inc., 100 N. E. Adams St., Peoria, IL USA 61629, telephone 1 (309) 675-1000, or go to URL www.cat.com, Find Your Dealer

Caterpillar's obligations under this Limited Warranty are subject to, and shall not apply in contravention of, the laws, rules, regulations, directives, ordinances, orders, or statutes of the United States, or of any other applicable jurisdiction, without recourse or liability with respect to Caterpillar.

A) For products operating outside of Australia, Fiji, Nauru, New Caledonia, New Zealand, Papua New Guinea, the Solomon Islands, and Tahiti, the following is applicable:

NEITHER THE FOREGOING EXPRESS WARRANTY NOR ANY OTHER WARRANTY BY CATERPILLAR, EXPRESS OR IMPLIED, IS APPLICABLE TO ANY ITEM CATERPILLAR SELLS THAT IS WARRANTED DIRECTLY TO THE USER BY ITS MANUFACTURER.

THIS WARRANTY IS EXPRESSLY IN LIEU OF ANY OTHER WARRANTIES, EXPRESS OR IMPLIED, INCLUDING ANY WARRANTY OF MERCHANTABILITY OR FITNESS FOR A PARTICULAR PURPOSE, EXCEPT CATERPILLAR EMISSION-RELATED COMPONENTS WARRANTY FOR NEW ENGINES, WHERE APPLICABLE. REMEDIES UNDER THIS WARRANTY ARE LIMITED TO THE PROVISION OF MATERIAL AND SERVICES, AS SPECIFIED HEREIN.

CATERPILLAR IS NOT RESPONSIBLE FOR INCIDENTAL OR CONSEQUENTIAL DAMAGES.

CATERPILLAR EXCLUDES ALL LIABILITY FOR OR ARISING FROM ANY NEGLIGENCE ON ITS PART OR ON THE PART OF ANY OF ITS EMPLOYEES, AGENTS, OR REPRESENTATIVES IN RESPECT OF THE MANUFACTURE OR SUPPLY OF GOODS OR THE PROVISION OF SERVICES RELATING TO THE GOODS.

IF OTHERWISE APPLICABLE, THE VIENNA CONVENTION ON CONTRACTS FOR THE INTERNATIONAL SALE OF GOODS IS EXCLUDED IN ITS ENTIRETY.

B) For products operating in Australia, Fiji, Nauru, New Caledonia, New Zealand, Papua New Guinea, the Solomon Islands, and Tahiti, the following is applicable:

THIS WARRANTY IS IN ADDITION TO WARRANTIES AND CONDITIONS IMPLIED BY STATUTE AND OTHER STATUTORY RIGHTS AND OBLIGATIONS THAT BY ANY APPLICABLE LAW CANNOT BE EXCLUDED, RESTRICTED OR MODIFIED ("MANDATORY RIGHTS"). ALL OTHER WARRANTIES OR CONDITIONS, EXPRESS OR IMPLIED (BY STATUTE OR OTHERWISE), ARE EXCLUDED. WITHOUT LIMITING THE FOREGOING PROVISIONS OF THIS PARAGRAPH, WHERE A PRODUCT IS SUPPLIED FOR BUSINESS PURPOSES, THE CONSUMER GUARANTEES UNDER THE CONSUMER GUARANTEES ACT 1993 (NZ) WILL NOT APPLY.

NEITHER THIS WARRANTY NOR ANY OTHER CONDITION OR WARRANTY BY CATERPILLAR, EXPRESS OR IMPLIED (SUBJECT ONLY TO THE MANDATORY RIGHTS), IS APPLICABLE TO ANY ITEM CATERPILLAR SELLS THAT IS WARRANTED DIRECTLY TO THE USER BY ITS MANUFACTURER.

IF THE MANDATORY RIGHTS MAKE CATERPILLAR LIABLE IN CONNECTION WITH SERVICES OR GOODS, THEN TO THE EXTENT PERMITTED UNDER THE MANDATORY RIGHTS, THAT LIABILITY SHALL BE LIMITED AT CATERPILLAR'S OPTION TO (a) IN THE CASE OF SERVICES, THE SUPPLY OF THE SERVICES AGAIN OR THE PAYMENT OF THE COST OF HAVING THE SERVICES SUPPLIED AGAIN AND (b) IN THE CASE OF GOODS, THE REPAIR OR REPLACEMENT OF THE GOODS, THE SUPPLY OF EQUIVALENT GOODS, THE PAYMENT OF THE COST OF SUCH REPAIR OR REPLACEMENT OR THE ACQUISITION OF EQUIVALENT GOODS.

CATERPILLAR EXCLUDES ALL LIABILITY FOR OR ARISING FROM ANY NEGLIGENCE ON ITS PART OR ON THE PART OF ANY OF ITS EMPLOYEES, AGENTS OR REPRESENTATIVES IN RESPECT OF THE MANUFACTURE OR SUPPLY OF GOODS OR THE PROVISION OF SERVICES RELATING TO THE GOODS.

CATERPILLAR IS NOT LIABLE FOR INCIDENTAL OR CONSEQUENTIAL DAMAGES UNLESS IMPOSED UNDER MANDATORY RIGHTS.

IF OTHERWISE APPLICABLE, THE VIENNA CONVENTION (CONTRACTS FOR THE INTERNATIONAL SALE OF GOODS) IS EXCLUDED IN ITS ENTIRETY.

C) For products supplied in Australia:

IF THE PRODUCTS TO WHICH THIS WARRANTY APPLIES ARE:

- I. PRODUCTS OF A KIND ORDINARILY ACQUIRED FOR PERSONAL, DOMESTIC OR HOUSEHOLD USE OR CONSUMPTION; OR
- II. PRODUCTS THAT COST AUD 40,000 OR LESS,

WHERE THOSE PRODUCTS WERE NOT ACQUIRED FOR THE PURPOSE OF RE-SUPPLY OR FOR THE PURPOSE OF USING THEM UP OR TRANSFORMING THEM IN THE COURSE OF PRODUCTION OR MANUFACTURE OR IN THE COURSE OF REPAIRING OTHER GOODS OR FIXTURES, THEN THIS SECTION C APPLIES.

THE FOLLOWING MANDATORY TEXT IS INCLUDED PURSUANT TO THE AUSTRALIAN CONSUMER LAW AND INCLUDES REFERENCES TO RIGHTS THE USER MAY HAVE AGAINST THE DIRECT SUPPLIER OF THE PRODUCTS: OUR GOODS COME WITH GUARANTEES THAT CANNOT BE EXCLUDED UNDER THE AUSTRALIAN CONSUMER LAW. YOU ARE ENTITLED TO A REPLACEMENT OR REFUND FOR A MAJOR FAILURE AND COMPENSATION FOR ANY OTHER REASONABLY FORESEEABLE LOSS OR DAMAGE. YOU ARE ALSO ENTITLED TO HAVE THE GOODS REPAIRED OR REPLACED IF THE GOODS FAIL TO BE OF ACCEPTABLE QUALITY AND THE FAILURE DOES NOT AMOUNT TO A MAJOR FAILURE. THE INCLUSION OF THIS TEXT DOES NOT CONSTITUTE ANY REPRESENTATION OR ACCEPTANCE BY CATERPILLAR OF LIABILITY TO THE USER OR ANY OTHER PERSON IN ADDITION TO THAT WHICH CATERPILLAR MAY HAVE UNDER THE AUSTRALIAN CONSUMER LAW.

TO THE EXTENT THE PRODUCTS FALL WITHIN THIS SECTION C BUT ARE NOT OF A KIND ORDINARILY ACQUIRED FOR PERSONAL, DOMESTIC OR HOUSEHOLD USE OR CONSUMPTION, CATERPILLAR LIMITS ITS LIABILITY TO THE EXTENT IT IS PERMITTED TO DO SO UNDER THE AUSTRALIAN CONSUMER LAW TO, AT ITS OPTION, THE REPAIR OR REPLACEMENT OF THE PRODUCTS, THE SUPPLY OF EQUIVALENT PRODUCTS, OR THE PAYMENT OF THE COST OF SUCH REPAIR OR REPLACEMENT OR THE ACQUISITION OF EQUIVALENT PRODUCTS.

THE WARRANTY SET OUT IN THIS DOCUMENT IS GIVEN BY CATERPILLAR INC. OR ANY OF ITS SUBSIDIARIES, 100 N. E. ADAMS ST, PEORIA, IL USA 61629, TELEPHONE 1 309 675 1000. THE USER IS RESPONSIBLE FOR ALL COSTS ASSOCIATED WITH MAKING A CLAIM UNDER THE WARRANTY SET OUT IN THIS DOCUMENT. EXCEPT AS EXPRESSLY STATED OTHERWISE IN THIS DOCUMENT, AND THE USER IS REFERRED TO THE BALANCE OF THE DOCUMENT TERMS CONCERNING CLAIM PROCEDURES, CATERPILLAR RESPONSIBILITIES AND USER RESPONSIBILITIES.

TO THE EXTENT PERMISSIBLE BY LAW, THE TERMS SET OUT IN THE REMAINDER OF THIS WARRANTY DOCUMENT (INCLUDING SECTION B) CONTINUE TO APPLY TO PRODUCTS TO WHICH THIS SECTION C APPLIES.

©2018 Caterpillar All Rights Reserved.

CAT, CATERPILLAR, their respective logos, "Caterpillar Yellow," the "Power Edge" trade dress as well as corporate and product identity used herein, are trademarks of Caterpillar and may not be used without permission.