

Distributor:	Linder Machinery
Item # 196	

KOMATSU WA480-8 Wheel Loader

BUILD SHEET

Engine and related items:

Air cleaner, dry-type, two stage, radial sealed
 Engine shut-off system, electric with key
 Engine, Komatsu SAA6D125E-7, 6 cylinder, turbocharged, air to
 air after cooled, cooled EGR, direct injection Tier 4 Final emissions
 certified, diesel
 Gross HP: 301 HP (244 kW) / 2000 RPM (SAE J1995)
 Net HP: 299 HP (223 kW) / 2000 RPM (ISO 9249 / SAEJ 1349)
 Exhaust pipe, curved
 Fan, auto-reversing, hydraulic-driven
 KDPF - After-Treatment Assembly Consisting of KDOC and KCSF
 Selective Catalytic Reduction (SCR) Assembly
 Komatsu Auto Idle Shutdown
 Starting aid, intake manifold preheater
 Two mode engine power select system

Electrical system:

Alternator, 90 ampere, 24 volt
 Back-up alarm
 Batteries, 2 x 12 volt (150 Ah) (1000 CCA)
 Battery disconnect switch
 Horn, electric
 Lights
 • Back-up light, rear, LED
 • Stop and tail, LED
 • Turn signal, (2 front, 2 rear) with hazard switch
 • Working lights, halogen (2 front, high low
 beam with indicator, fender mount, 2 rear grill mount
 • Working lights, halogen (2 front) outside of cab mount
 Sealed DT electrical connectors
 Starting motor, 7.5kW direct electric, 24V

Power Train and Controls:

Differentials, conventional, inboard planetary
 Lock-up torque converter
 Parking brake, wet multiple disc
 Service brakes, hydraulic, wet multiple disc,
 axle by axle (inboard)
 Transmission control, electric with kick-down switch
 Transmission, full power shift automatic, F4-R4
 softshift, countershaft with four mode select system

Operator environment:

Cab, (ROPS/FOPS) (installed), includes; adjustable arm
 rests, adjustable work equipment levers, cigarette lighter/
 ashtray, dome light, electrically heated rear window, air
 conditioner / heater / defroster / pressurizer, floor mat,
 front (intermittent) and rear wiper/washer, rearview mirrors
 (2 outside, 2 inside), right hand and left hand door access
 with steps and sunvisor
 Hydraulic control, 2 spool (boom/bucket), 2 lever
 EPC fingertip control
 Monitor, 7 inch, LCD, color
 Radio, AM/FM with speakers and auxiliary jack
 Rear view monitor
 Seat, heated air suspension type, reclining with armrests (fabric)
 Seat belt, 3" width, retractable
 Steering wheel, tiltable, telescopic

- Hydraulic oil temperature
- Speedometer / Tachometer
- Torque Converter Temperature

- Head lamp high beam
- KDPF restriction indicator
- Komtrax message
- Parking brake warning
- Seat belt caution
- Shift hold
- Steering oil pressure
- Torque converter lock-up
- Transmission speed range
- Turn signal
- Work equipment lock warning

BUCKET:

5.75 yd GP w/ Bolt on Edge

KOMATSU®

WA480-8

Tier 4 Final Engine

WHEEL LOADER

WA480



Photos may show optional equipment.

NET HORSEPOWER

299 HP @ 2000 rpm
223 kW @ 2000 rpm

OPERATING WEIGHT

56,262 lb – 56,416 lb
25,520 kg – 25,590 kg

BUCKET CAPACITY

6.0 – 6.5 yd³
4.6 – 5.0 m³



PERFORMANCE, DURABILITY AND FUEL ECONOMY

Large capacity torque converter with lock-up:

- Quick acceleration
- Lock-up in 2nd, 3rd and 4th gear

Komatsu SmartLoader Logic helps reduce fuel consumption with no decrease in production.



A powerful **Komatsu SAA6D125E-7 engine** provides a net output of 223 kW **299 HP** with up to 20% improved fuel consumption.* This engine is EPA Tier 4 Final emissions certified.

Variable Geometry Turbocharger (VGT) uses a hydraulic actuator to provide optimum air flow under all speed and load conditions.

Komatsu Diesel Particulate Filter (KDPF) and Selective Catalytic Reduction (SCR) systems reduce particulate matter and NOx while providing automatic regeneration that does not interfere with daily operation.

Fluid neutral or better

Fuel & DEF total consumption is less than fuel consumed by the prior model.

Cooling

- Hydraulically driven, variable speed
- Auto-reversing fan is standard
- Wider core coolers resist clogging
- Swing out fan for easy cleaning

Remote boom and bucket positioners can set kick-outs from inside the cab.

Variable displacement piston pumps with CLSS provides quick response and smooth operation to maximize productivity.

Rearview monitoring system (standard)

Advanced diagnostic system continuously monitors machine operation and vital systems to identify machine issues and assist with troubleshooting.

Transmission Mode Select System (3 modes) allows shifting mode to be matched more efficiently to varying work applications.

Enhanced working environment:

- High capacity air suspension seat, heated
- Seat mounted EPC controls with F-N-R switch
- (2) 12V power outlets

New style of front fender is plastic for durability.

Rear full fenders (standard) are made of durable plastic and swing open for easy access to maintenance points.

Large LCD color monitor panel:

- 7" high resolution, multi-color screen is easy to read
- Provides "Ecology Guidance" for fuel efficient operation
- Onboard diagnostics do not require use of a laptop computer
- Multiple choice, pulldown menus are filled with useful functions

Komatsu Auto Idle Shutdown helps reduce idle time and operating costs.

External mounting of engine air filter (above rear LH fender) provides easy access for maintenance.

The **KOMTRAX®** telematics system is standard on Komatsu equipment with no subscription fees throughout the life of the machine. Using wireless technology, **KOMTRAX®** transmits valuable information such as location, utilization, and maintenance records to a PC or smartphone app. Custom machine reports are provided for identifying machine efficiency and operating trends. **KOMTRAX®** also provides advanced machine troubleshooting capabilities by continuously monitoring machine health.

Battery disconnect switch allows a technician to disconnect and lock-out the power supply before servicing the machine.

Operator Identification System can track machine operation for up to 100 operators.

*Compared to the WA480-6.

KOMATSU PARTS & SERVICE SUPPORT



KOMATSU CARE

Program Includes:

*The WA480-8 comes standard with complimentary factory scheduled maintenance for the first 3 Years or 2,000 Hours, whichever comes first.

Planned Maintenance Intervals at:

500/1000/1500/2000 hour intervals. (250 hr. initial interval for some products) Complimentary Maintenance Interval includes: Replacement of Oils & Fluid Filters with genuine Komatsu Parts, 50-Point inspection, Komatsu Oil & Wear Analysis Sampling (KOWA) / Travel & Mileage (distance set by distributor; additional charges may apply)

Benefits of Using Komatsu CARE

- Assurance of Proper Maintenance with OEM Parts & Service
- Increased Uptime & Efficiency
- Factory Certified Technicians Performing Work
- Cost of Ownership Savings
- Transferable Upon Resale

Complimentary KDPF Exchanges

The WA480-8 comes standard with 2 Complimentary KDPF Exchange units for the first 5 Years or 9000 hours whichever comes first. The suggested KDPF Exchange unit service intervals are 4500 hours & 9000 hours. End user must have authorized Komatsu distributor perform the removal & installation of the KDPF.

Complimentary SCR Maintenance

The WA480-8 also includes 2 factory recommended services of the Selective Catalytic Reduction (SCR) Diesel Exhaust Fluid (DEF) system during the first 5 Years or 9000 hours whichever comes first. The service includes factory recommended DEF tank flush & strainer cleaning at the suggested service intervals of 4500 hours & 9000 hours.

Interval PM	i250	500	1000	1500	2000
PERFORM KOWA SAMPLING (5 samples) – engine, transmission, hydraulics, front & rear axle	✓	✓	✓	✓	✓
CLEAN AC FRESH AND RECIRC AIR FILTERS	✓				
REPLACE HYDRAULIC OIL FILTER ELEMENT	✓				✓
REPLACE TRANSMISSION OIL FILTER	✓		✓		✓
CHECK AND CLEAN AIR CLEANER	✓	✓	✓	✓	✓
CHECK AND CLEAN FUEL BREATHING ELEMENT	✓	✓	✓	✓	✓
LUBRICATE REAR AXLE PIVOT PIN	✓	✓	✓	✓	✓
LUBRICATE WORK EQUIPMENT	✓	✓	✓	✓	✓
CHECK PARKING BRAKE	✓	✓	✓	✓	✓
CHECK WHEEL HUB BOLTS AND RETIGHTEN AS NECESSARY	✓	✓	✓	✓	✓
DRAIN SEDIMENT FROM FUEL TANK	✓	✓	✓	✓	✓
COMPLETE 50 POINT INSPECTION FORM; LEAVE PINK COPY WITH CUSTOMER OR IN CAB	✓	✓	✓	✓	✓
RESET MONITOR PANEL MAINTENANCE COUNTER FOR APPROPRIATE ITEMS	✓	✓	✓	✓	✓
CHANGE ENGINE OIL		✓	✓	✓	✓
REPLACE ENGINE OIL FILTER		✓	✓	✓	✓
REPLACE AC FRESH & RECIRC AIR FILTERS		✓	✓	✓	✓
REPLACE FUEL PRE-FILTER		✓	✓	✓	✓
REPLACE FUEL MAIN FILTER			✓	✓	✓
REPLACE DEF TANK BREATHING			✓	✓	✓
CLEAN TRANSMISSION BREATHING ELEMENT			✓	✓	✓
REPLACE TRANSMISSION OIL STRAINER			✓	✓	✓
LUBRICATE CENTER HINGE PIN			✓	✓	✓
LUBRICATE DRIVE SHAFT CENTER SUPPORT				✓	✓
CHANGE TRANSMISSION OIL				✓	✓
CHANGE FRONT AND REAR AXLE OIL					✓
REPLACE HYDRAULIC TANK BREATHING ELEMENT					✓
CLEAN HYDRAULIC OIL STRAINER					✓
CHANGE HYDRAULIC OIL					✓
REPLACE DEF PUMP FILTER					✓
REPLACE KCCV FILTER					✓
FACTORY TRAINED TECHNICIAN LABOR	✓	✓	✓	✓	✓
2 KDPF Exchanges at 4,500 Hrs and 9,000 Hrs.					
2 SCR System Maintenance Services at 4,500 Hrs. and 9000 Hrs.					

Komatsu CARE® – Extended Coverage

- Extended Coverage can provide peace of mind by protecting customers from unplanned expenses that effect cash flow
- Purchasing extended coverage locks-in the cost of covered parts and labor for the coverage period and helps turn these into fixed costs



Komatsu Parts Support

- 24/7/365 to fulfill your parts needs
- 9 parts Distribution Centers strategically located across the U.S. and Canada
- Distributor network of more than 300 locations across U.S. and Canada to serve you
- Online part ordering through Komatsu eParts
- Remanufactured components with same-as-new warranties at a significant cost reduction



Komatsu Oil and Wear Analysis (KOWA)

- KOWA detects fuel dilution, coolant leaks, and measures wear metals
- Proactively maintain your equipment
- Maximize availability and performance
- Can identify potential problems before they lead to major repairs
- Reduce life cycle cost by extending component life

* Certain exclusions and limitations apply. Refer to the customer certificate for complete program details and eligibility. Komatsu® and Komatsu Care® are registered trademarks of Komatsu Ltd. Copyright 2018 Komatsu America Corp.

WA480-8

KOMTRAX EQUIPMENT MONITORING

GET THE WHOLE STORY WITH
KOMTRAX®

✓ WHAT

- KOMTRAX is Komatsu's remote equipment monitoring and management system
- KOMTRAX **continuously monitors and records** machine health and operational data
- Information such as fuel consumption, utilization, and a detailed history **lowering owning and operating cost**

✓ WHO

- KOMTRAX is **standard** equipment on all Komatsu construction products

✓ WHEN

- Know when your machines are **running or idling** and make decisions that will improve your fleet utilization
- Detailed movement records ensure you know when and where your equipment is moved
- Up to date records allow you to **know when maintenance is due** and help you plan for future maintenance needs

✓ WHERE

- KOMTRAX data **can be accessed virtually anywhere** through your computer, the web or your smart phone
- Automatic alerts keep fleet managers up to date on the latest machine notifications

✓ WHY

- Knowledge is power - **make informed decisions** to manage your fleet better
- Knowing your idle time and fuel consumption will help maximize your machine efficiency
- **Take control of your equipment** - any time, anywhere



KOMTRAX®

For construction and compact equipment.

KOMTRAX Plus®

For production and mining class machines.

WA 480-8

ENGINE

*EPA Tier 4 Final emissions certified

TRANSMISSION

Travel speed	Forward*	Reverse*
1st	7.3 km/h 4.5 mph	7.5 km/h 4.7 mph
2nd	12.7 km/h 7.9 mph (13.3 km/h 8.3 mph)	13.1 km/h 8.1 mph (13.8 km/h 8.6 mph)
3rd	22.2 km/h 13.8 mph (23.8 km/h 14.8 mph)	22.9 km/h 14.2 mph (24.5 km/h 15.2 mph)
4th	35.4 km/h 22.0 mph (38.5 km/h 24.0 mph)	36.6 km/h 22.7 mph (39.0 km/h 24.2 mph)

*P-mode Measured with 26.5-R25 tires (): Lock-up clutch ON

AXLES AND FINAL DRIVES

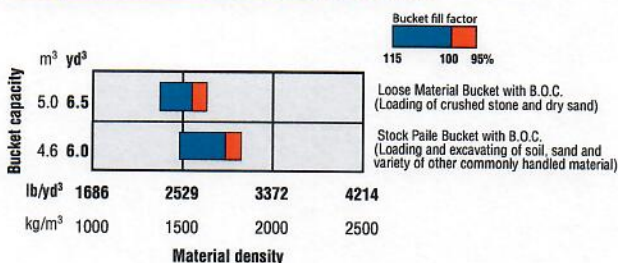
BRAKES

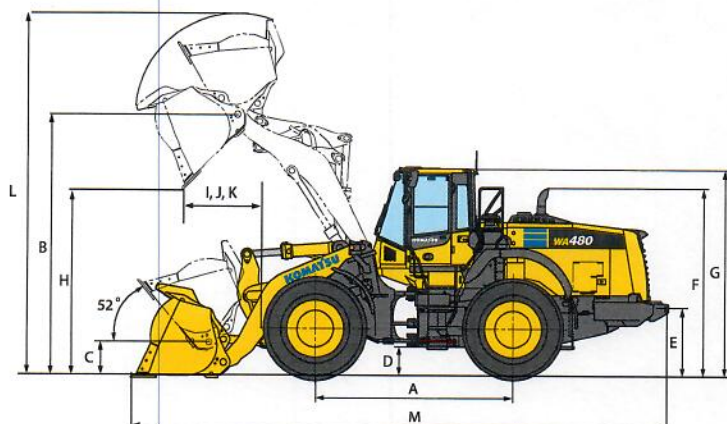
STEERING SYSTEM

HYDRAULIC SYSTEM

SERVICE REFILL CAPACITIES

BUCKET SELECTION GUIDE




DIMENSIONS


Tread	2300 mm	7'7"
Width over tires	3010 mm	9'11"
A Wheelbase	3450 mm	11'4"
B Hinge pin height, max. height	4505 mm	14'9"
C Hinge pin height, carry position	585 mm	1'11"
D Ground clearance	525 mm	1'9"
E Hitch height	1210 mm	4'0"
F Overall height, top of the stack	3220 mm	10'7"
G Overall height, ROPS cab	3575 mm	11'9"

Measured with 26.5-R25(L3) Tires, ROPS/FOPS cab

	General Purpose Bucket Pin On	Loose Material Bucket Pin On
	Bolt-on Cutting Edge	Bolt-on Cutting Edge
Bucket capacity: heaped	4.6 m ³	5.0 m ³
	6.0 yd³	6.5 yd³
struck	4.0 m ³	4.3 m ³
	5.2 yd³	5.6 yd³
Bucket width	3170 mm	3170 mm
	10'5"	10'5"
Bucket weight	2387 kg	2458 kg
	5,262 lb	5,419 lb
H Dumping clearance, max. height and 45° dump angle*	3165 mm	3095 mm
	10'5"	10'2"
I Reach at max. height and 45° dump angle*	1440 mm	1530 mm
	4'9"	5'0"
J Reach at 2130 mm 7' clearance and 45° dump angle*	2165 mm	2205 mm
	7'1"	7'3"
K Reach with arm horizontal and bucket level*	3080 mm	3180 mm
	10'1"	10'2"
L Operating height (fully raised)	6280 mm	6375 mm
	20'7"	20'11"
M Overall length (bucket on ground)	9375 mm	9475 mm
	30'9"	31'1"
Loader clearance circle (bucket at carry, outside corner of bucket)	15420 mm	15475 mm
	50'7"	50'9"
Digging depth: 0°	90 mm	90 mm
	3.5"	3.5"
10°	365 mm	385 mm
	14"	15"
Static tipping load: straight	19050 kg	18945 kg
	41,998 lb	41,767 lb
40° full turn	16565 kg	16465 kg
	36,520 lb	36,299 lb
Breakout force	206 kN	193 kN
	21000 kgf	19700 kgf
	46,297 lbf	43,431 lbf
Operating weight	25520 kg	25590 kg
	56,262 lb	56,416 lb

* At the end of tooth or B.O.C.E. (Bolt on cutting edge)

All dimensions, weights, and performance values based on ISO 7131, ISO 14397-1 and ISO 7546 standards.

Static tipping load and operating weight shown include lubricant, coolant, full fuel tank, ROPS cab, and operator.

Machine stability and operating weight affected by counterweight, tire size, and other attachments.



WEIGHT AND DIMENSION CHANGES

Tires or attachments	Operating weight		Tipping load straight		Tipping load full turn		Width over tires		Ground clearance		Change in vertical dimensions	
	kg	lb	kg	lb	kg	lb	mm	in	mm	in	mm	in
26.5-25-20PR(L-4)	+340	+750	+239	+527	+211	+465	3010	119	525	21	0	0
Remove additional counterweight	-378	-833	-924	-2037	-769	-1695						



STANDARD EQUIPMENT

- 2-spool valve for boom and bucket control
- Alternator, 90 A
- Auto shift transmission with mode select system
- Automatic Digging System
- Automatic hydraulic-driven fan with automatic reverse rotation
- Back-up alarm
- Batteries, 140 Ah/12V (2), 930 CCA
- Battery disconnect with lockout
- Boom Kick-out, in-cab adjustable
- Bucket Positioner, in-cab adjustable, 3 positions
- Color rear view camera and monitor
- Counterweight, standard and additional
- Electronically Controlled Suspension System (ECSS)
- Engine, Komatsu SAA6D125E-7 diesel
- Engine shut-off system, electric
- EPC fingertip controls with F-N-R switch, two levers
- Equipment Management Monitoring System (EMMS)
 - Lights (central warning, brake oil pressure, engine oil pressure, parking brake, cooling fan reverse, KDPF restriction, seat belt caution, Komtrax message)
- Gauges (Engine water temperature, ecology, fuel level, DEF level, hydraulic oil temperature, speedometer/tachometer)
- Front fenders
- Fuel pre-filter with water separator
- Horn, electric
- Integrated Load Meter (2 lever only)
- Komatsu SmartLoader Logic
- Komatsu Auto Idle Shutdown
- KOMTRAX® Level 5
- Lift cylinders and bucket cylinder
- Lights
 - Back-up light, LED
 - Stop and tail light, LED
 - Turn signal lamps, 2 front and 2 rear with hazard switch
 - Working lights, halogen, 2 front cab mount
 - Working lights, halogen, 2 front fender mount
 - Working lights, halogen, 2 rear grill mount
- Loader linkage with standard lift arm
- Lock-up torque converter
- Parking brake, electric
- Radiator, wider core
- Radiator mask, swing out
- Rear full fenders
- Rear view mirrors, outside (2) inside (2)
- Rims for 26.5-25 tires
- ROPS/FOPS Cab Level 2
 - 2 x DC12V electrical outlets
 - Ashtray
 - Auto air conditioner
 - Cigarette lighter, 24V
 - Color LCD/TFT multi-monitor
 - Cup holder
 - Floor mat
 - Operator seat, reclining, air suspension type, heated
 - Radio, AM/FM with AUX input jack
 - Rear defroster, electric
 - Seatbelt, 2-point retractable, 76mm 3" width
 - Space for Lunch box
 - Steering wheel, tilt and telescopic
 - Sun visor, front window
 - Windshield washer and wiper, front with intermittent
 - Windshield washer and wiper, rear
- Service brakes, wet disc type
- Starting motor, 7.5 kW
- Transmission, 4 forward and 4 reverse
- Vandalism protection kit, padlocks for battery box (2)



OPTIONAL EQUIPMENT

- Advanced Joystick Steering System (AJSS)
- Auto Lube System
- Auxiliary steering (SAE)
- Block heater and oil pan heater
- Cutting edge (bolt-on type)
- Engine pre-cleaner with extension
- Limited slip differential (F&R)
- Load Meter Printer (2 lever only)
- Monolever loader control with transmission F-N-R switch (not compatible with AJSS)
- Various tire options, radial and bias
- Various bucket options



AESS930-02

©2018 Komatsu America Corp.

Printed in USA

AD10(2.5M)OTP

10/18 (EV-1)

KOMATSU®

Note: All comparisons and claims of improved performance made herein are made with respect to the prior Komatsu model unless otherwise specifically stated.

www.komatsuamerica.com

Komatsu America Corp. is an authorized licensee of Komatsu Ltd. Materials and specifications are subject to change without notice.

KOMATSU®, Komatsu Care®, KOMTRAX® and KOMTRAX Plus® are registered trademarks of Komatsu Ltd. All other trademarks and service marks used herein are the property of Komatsu Ltd., Komatsu America Corp. or their respective owners or licensees.

Distributor:	Linder Machinery
Item # 196	

KOMATSU WA480-8 Wheel Loader

BUILD SHEET

Engine and related items:

Air cleaner, dry-type, two stage, radial sealed
 Engine shut-off system, electric with key
 Engine, Komatsu SAA6D125E-7, 6 cylinder, turbocharged, air to
 air after cooled, cooled EGR, direct injection Tier 4 Final emissions
 certified, diesel
 Gross HP: 301 HP (244 kW) / 2000 RPM (SAE J1995)
 Net HP: 299 HP (223 kW) / 2000 RPM (ISO 9249 / SAEJ 1349)
 Exhaust pipe, curved
 Fan, auto-reversing, hydraulic-driven
 KDPF - After-Treatment Assembly Consisting of KDOC and KCSF
 Selective Catalytic Reduction (SCR) Assembly
 Komatsu Auto Idle Shutdown
 Starting aid, intake manifold preheater
 Two mode engine power select system

Electrical system:

Alternator, 90 ampere, 24 volt
 Back-up alarm
 Batteries, 2 x 12 volt (150 Ah) (1000 CCA)
 Battery disconnect switch
 Horn, electric
 Lights
 • Back-up light, rear, LED
 • Stop and tail, LED
 • Turn signal, (2 front, 2 rear) with hazard switch
 • Working lights, halogen (2 front, high low
 beam with indicator, fender mount, 2 rear grill mount
 • Working lights, halogen (2 front) outside of cab mount
 Sealed DT electrical connectors
 Starting motor, 7.5kW direct electric, 24V

Power Train and Controls:

Differentials, conventional, inboard planetary
 Lock-up torque converter
 Parking brake, wet multiple disc
 Service brakes, hydraulic, wet multiple disc,
 axle by axle (inboard)
 Transmission control, electric with kick-down switch
 Transmission, full power shift automatic, F4-R4
 softshift, countershaft with four mode select system

Operator environment:

Cab, (ROPS/FOPS) (installed), includes; adjustable arm
 rests, adjustable work equipment levers, cigarette lighter/
 ashtray, dome light, electrically heated rear window, air
 conditioner / heater / defroster / pressurizer, floor mat,
 front (intermittent) and rear wiper/washer, rearview mirrors
 (2 outside, 2 inside), right hand and left hand door access
 with steps and sunvisor
 Hydraulic control, 2 spool (boom/bucket), 2 lever
 EPC fingertip control
 Monitor, 7 inch, LCD, color
 Radio, AM/FM with speakers and auxiliary jack
 Rear view monitor
 Seat, heated air suspension type, reclining with armrests (fabric)
 Seat belt, 3" width, retractable
 Steering wheel, tiltable, telescopic

- Hydraulic oil temperature
- Speedometer / Tachometer
- Torque Converter Temperature

- Head lamp high beam
- KDPF restriction indicator
- Komtrax message
- Parking brake warning
- Seat belt caution
- Shift hold
- Steering oil pressure
- Torque converter lock-up
- Transmission speed range
- Turn signal
- Work equipment lock warning

BUCKET:

5.75 yd GP w/ Bolt on Edge