

Distributor:	Linder Machinery
Item # 189	

KOMATSU WA270-8 BUILD SHEET

Engine and related items:

Air cleaner, dry-type, two stage, radial sealed
 Engine shut-off system, electric with key
 Engine, KOMATSU SAA6D107E-3, 6 cylinder turbocharged, air to air after cooled, cooled EGR, direct injection Tier 4 Final interim emissions certified, diesel.
Gross HP: 154HP (114.5kW) / 2000 RPM
 Net HP: 149HP (113kW) / 2000 RPM (SAEJ1349) ISO / 9249
 Net HP: 135HP (101kW) / 1500 RPM Hydraulic fan at max speed
 Exhaust pipe, curved
 Fan, auto-reverse, hydraulic driven
 KDPF - After-Treatment Assembly Consisting of KDOC and KCSF
 Komatsu Auto Idle Shutdown
 SCR - Selective Catalytic Reduction aftertreatment with DEF tank and heated lines
 Starting aid, intake air preheater type

Electrical system:

Alternator, 60 ampere, 24 volt
 Back-up alarm
 Batteries, 2 x 12 volt, (92 Ah), (680 CCA)
 Battery disconnect switch
 Horn, electric
 Lights

- Back-up light, rear, LED
- Sealed DT electrical connectors
- Starting motor, 5.5kW direct electric, 24V
- Stop and tail light, LED
- Turn signal, (2 front, 2 rear) with hazard switch
- Working lights, halogen (2 front, high low beam with indicator, fender mount, 2 rear grill mount
- Working lights, halogen (2 front) outside of cab mount

Power Train and Controls:

Differentials, torque proportioning, inboard planetary
 Parking brake, wet disc type
 Service brakes, hydraulic, wet multiple disc type, axle by axle (inboard)
 Transmission, hydrostatic, 1 pump, 2 motors, full auto shift with speed range control
 Transmission control

- F/R: steering column / loader control lever selectable
- Max speed control: electric, 4 speed F/R
- Traction control: electric, 3 mode

Operator environment:

Cab, (ROPS/FOPS) (installed), includes; adjustable arm rests, adjustable work equipment levers, cigarette lighter/ ashtray, dome light, electrically heated rear window, air conditioner / heater / defroster / pressurizer, floor mat, front (intermittent) and rear wiper/washer, rearview mirrors (2 outside, 2 inside), right hand and left hand door access with steps and sunvisor
 Hydraulic control, 2 spool (boom/bucket), multi-function mono lever control, with integrated transmission F/R switch and includes integrated third spool proportional switch (3 spool is optional)
 Monitor, 7 inch, LCD, color
 Radio, AM/FM with speakers and auxiliary jack
 Rear view monitor
 Seat, heated air suspension type, reclining with armrests (fabric)
 Seat belt, 3" width, retractable
 Steering wheel, tiltable, telescopic

Bucket:

3.0yd Pin On Bucket w/ Bolt on Edge

KOMATSU®

WA270-8

Tier 4 Final Engine

WHEEL LOADER

WA270



Photos may include optional equipment.

NET HORSEPOWER

149 HP @ 2000 rpm
111 kW @ 2000 rpm

OPERATING WEIGHT

28,208 – 29,079 lb
12795 – 13190 kg

BUCKET CAPACITY

2.5 – 3.5 yd³
1.9 – 2.7 m³



HIGH PRODUCTION WITH LOW FUEL CONSUMPTION

Proven, Fourth Generation Hydrostatic Transmission:

- Quick Acceleration
- Dynamic Braking
- Variable Speed Traction Control
- Creeping Mode

Komatsu SmartLoader Logic helps reduce fuel consumption with no decrease in production.

A powerful **Komatsu SAA6D107E-3 engine** provides a net output of 111 kW **149 HP** with up to 3% improved fuel consumption. This engine is EPA Tier 4 Final emissions certified.

Variable Geometry Turbocharger (VGT) is hydraulically actuated to provide optimum air flow under all speed and load conditions. This Tier 4 Final version has improved performance.

Komatsu Diesel Particulate Filter (KDPF) and Selective Catalytic Reduction (SCR) systems reduce particulate matter and NOx while providing automatic regeneration that does not interfere with daily operation.

Ample cooling capacity

- Auto-reversing fan is standard
- Wider core coolers

Fluid neutral or better

Combined fuel and DEF consumption is equal to or less than the WA270-7 fuel consumption.

Spacious cab provides the operator with improved comfort and visibility.

New high resolution monitor panel:

- Enhanced and intuitive on-board diagnostics
- Integrated with KOMTRAX Level 5
- Integrated with Komatsu Tier 4 Final technology

Rearview monitoring system is standard.

New high capacity air suspension seat with heat is standard.



Energy saving guidance:

- Six operator guiding messages
- Enhanced ecology gauge

Komatsu auto idle shutdown helps reduce idle time and operating costs.

Remote boom positioner can set kickout.

Versatile Parallel Z-bar (PZ) linkage for parallel lift.

Variable displacement piston pumps with Closed-Center Load Sensing System (CLSS) help reduce fuel consumption.

The **KOMTRAX®** telematics system is standard on Komatsu equipment with no subscription fees throughout the life of the machine. Using wireless technology, **KOMTRAX®** transmits valuable information such as location, utilization, and maintenance records to a PC or smartphone app. Custom machine reports are provided for identifying machine efficiency and operating trends. **KOMTRAX®** also provides advanced machine troubleshooting capabilities by continuously monitoring machine health.

Operator identification system tracks machine operation for up to 100 operators.



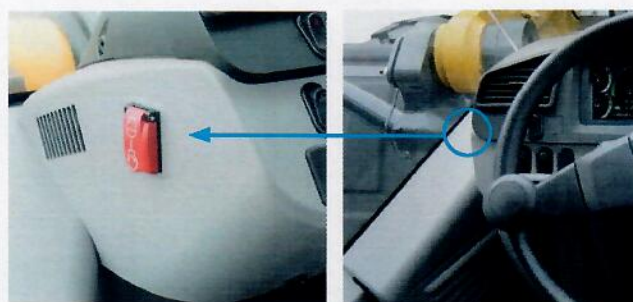
Standard Rear View Monitoring System

The dedicated, full-color monitor on the right side of the cab provides the operator with a rear view from the machine. This monitor can be always on or only on when the loader shifts into reverse. Guidelines provide the operator with visual cues for the width of the loader.



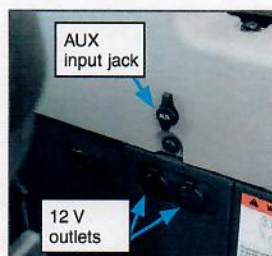
Engine Shutdown Secondary Switch

The engine stop switch enables machine shutdown when accessing the key switch is not possible.



Auxiliary Input (MP3 Jack) 12 V Outlets

An Aux input for audio devices is standard as well as two 12 volt outlets. These are all located on the rear wall of the cab.



MAINTENANCE FEATURES

WA270-8



Side-opening Gull-wing Engine Doors

The large, gull-wing-type engine doors require minimal effort to open and close, thanks to gas assisted struts. The doors make access and daily maintenance easy. Large steps on each side of the frame also enhance accessibility.



Auto Reversing Fan

The engine cooling fan is hydraulically driven. It can be set to reverse automatically during operation. Fan reverse mode and timing can be controlled through the monitor.



Swing-Out Type Cooling Fan and Wide Core Radiator

The cooling fan swings out for easier cleaning. The coolers feature wide-spaced cooling fins to reduce clogging.



DEF Tank

The DEF tank is easily accessed behind the RH side ladder. An external sight gauge helps prevent overflow and spillage while refilling.



Battery Disconnect Switch

The battery disconnect switch is located on the right side of the machine. This can be used to disconnect power when performing service work on the machine.



KOMATSU PARTS & SERVICE SUPPORT



KOMATSU CARE

Program Includes:

*The WA270-8 comes standard with complimentary factory scheduled maintenance for the first 3 Years or 2,000 Hours, whichever comes first.

Planned Maintenance Intervals at:

500/1000/1500/2000 hour intervals. (250 hr. initial interval for some products) Complimentary Maintenance Interval includes: Replacement of Oils & Fluid Filters with genuine Komatsu Parts, 50-Point inspection, Komatsu Oil & Wear Analysis Sampling (KOWA) / Travel & Mileage (distance set by distributor; additional charges may apply)

Benefits of Using Komatsu CARE

- Assurance of Proper Maintenance with OEM Parts & Service
- Increased Uptime & Efficiency
- Factory Certified Technicians Performing Work
- Cost of Ownership Savings
- Transferable Upon Resale

Complimentary KDPF Exchanges

The WA270-8 comes standard with 2 Complimentary KDPF Exchange units for the first 5 Years or 9000 hours whichever comes first. The suggested KDPF Exchange unit service intervals are 4500 hours & 9000 hours during the first 5 Years. End user must have authorized Komatsu distributor perform the removal & installation of the KDPF.

Complimentary SCR Maintenance

The WA270-8 also includes 2 factory recommended services of the Selective Catalytic Reduction (SCR) Diesel Exhaust Fluid (DEF) system during the first 5 Years or 9000 hours whichever comes first. The service includes factory recommended DEF tank flush & strainer cleaning at the suggested service intervals of 4500 hours & 9000 hours.

Interval PM	i250	500	1000	1500	2000
CLEAN AC FRESH AND RECIRC AIR FILTERS	✓				
REPLACE HYDRAULIC OIL FILTER ELEMENT	✓				✓
REPLACE HST OIL FILTER	✓		✓		✓
KOWA SAMPLING - (Engine, Front Axle & Rear Axle, Hydraulics, Transfer case)	✓	✓	✓	✓	✓
CHECK AND CLEAN AIR CLEANER	✓	✓	✓	✓	✓
CHECK AND CLEAN FUEL BREATHING ELEMENT	✓	✓	✓	✓	✓
LUBRICATE REAR AXLE PIVOT PIN	✓	✓	✓	✓	✓
LUBRICATE WORK EQUIPMENT	✓	✓	✓	✓	✓
DRAIN SEDIMENT FROM FUEL TANK	✓	✓	✓	✓	✓
COMPLETE 50 POINT INSPECTION FORM; LEAVE PINK COPY WITH CUSTOMER OR IN CAB	✓	✓	✓	✓	✓
RESET MONITOR PANEL MAINTENANCE COUNTER FOR APPROPRIATE ITEMS	✓	✓	✓	✓	✓
CHANGE ENGINE OIL		✓	✓	✓	✓
REPLACE ENGINE OIL FILTER		✓	✓	✓	✓
REPLACE AC FRESH & RECIRC AIR FILTERS		✓	✓	✓	✓
REPLACE FUEL PRE-FILTER		✓	✓	✓	✓
REPLACE FUEL MAIN FILTER			✓	✓	✓
CHANGE OIL IN TRANSFER CASE			✓	✓	✓
CLEAN TRANSFER CASE STRAINER			✓	✓	✓
CLEAN TRANSFER BREATHER			✓	✓	✓
LUBRICATE CENTER HINGE PIN			✓	✓	✓
CHANGE OIL IN HYDRAULIC TANK				✓	✓
REPLACE HYDRAULIC TANK BREATHER ELEMENT					✓
REPLACE DEF TANK BREATHER					✓
REPLACE DEF PUMP FILTER					✓
CLEAN HYDRAULIC TANK STRAINER					✓
CHANGE FRONT AND REAR AXLE OIL					✓
CLEAN BRAKE CIRCUIT STRAINER					✓
REPLACE KCCV FILTER					✓
FACTORY TRAINED TECHNICIAN LABOR	✓	✓	✓	✓	✓
2 KDPF Exchanges at 4,500 Hrs and 9,000 Hrs.					
2 SCR System Maintenance Services at 4,500 Hrs. and 9,000 Hrs.					

Komatsu CARE® – Extended Coverage

- Extended Coverage can provide peace of mind by protecting customers from unplanned expenses that effect cash flow
- Purchasing extended coverage locks-in the cost of covered parts and labor for the coverage period and helps turn these into fixed costs



Komatsu Parts Support

- 24/7/365 to fulfill your parts needs
- 9 parts Distribution Centers strategically located across the U.S. and Canada
- Distributor network of more than 300 locations across U.S. and Canada to serve you
- Online part ordering through Komatsu eParts
- Remanufactured components with same-as-new warranties at a significant cost reduction



Komatsu Oil and Wear Analysis (KOWA)

- KOWA detects fuel dilution, coolant leaks, and measures wear metals
- Proactively maintain your equipment
- Maximize availability and performance
- Can identify potential problems before they lead to major repairs
- Reduce life cycle cost by extending component life

* Certain exclusions and limitations apply. Refer to the customer certificate for complete program details and eligibility. Komatsu® and Komatsu Care® are registered trademarks of Komatsu Ltd. Copyright 2019 Komatsu America Corp.

WA270-8

KOMTRAX EQUIPMENT MONITORING

GET THE WHOLE STORY WITH
KOMTRAX®

✓ WHAT

- KOMTRAX is Komatsu's remote equipment monitoring and management system
- KOMTRAX **continuously monitors and records** machine health and operational data
- Information such as fuel consumption, utilization, and a detailed history **lowering owning and operating cost**

✓ WHO

- KOMTRAX is **standard** equipment on all Komatsu construction products

✓ WHEN

- Know when your machines are **running or idling** and make decisions that will improve your fleet utilization
- Detailed movement records ensure you know when and where your equipment is moved
- Up to date records allow you to **know when maintenance is due** and help you plan for future maintenance needs

✓ WHERE

- KOMTRAX data **can be accessed virtually anywhere** through your computer, the web or your smart phone
- Automatic alerts keep fleet managers up to date on the latest machine notifications

✓ WHY

- Knowledge is power - **make informed decisions** to manage your fleet better
- Knowing your idle time and fuel consumption will help maximize your machine efficiency
- **Take control of your equipment** - any time, anywhere



KOMTRAX®

For construction and compact equipment.

KOMTRAX Plus®

For production and mining class machines.

SPECIFICATIONS



ENGINE

Model..... Komatsu SAA6D107E-3*
 Type..... Water-cooled, 4-cycle
 Aspiration..... Variable geometry turbo-charged,
 after-cooled, cooled EGR
 Number of cylinders..... 6
 Bore..... 107 mm **4.21"**
 Stroke..... 124 mm **4.88"**
 Piston displacement..... 6.69 ltr **408 in³**
 Governor..... All-speed, electronic
 Horsepower:
 SAE J1995..... Gross 115 kW **153 HP**
 ISO 9249 / SAE J1349..... Net 111 kW **149 HP**
 Rated rpm..... 2000 rpm
 Max power - ISO 14396..... 111 kW **149 HP @ 1650 rpm**
 Fan drive method for radiator cooling..... Hydraulic
 Fuel system..... Direct injection
 Lubrication system:
 Method..... Gear pump, force-lubrication
 Filter..... Full-flow type
 Air cleaner..... Dry type with double elements and
 dust evacuator, plus dust indicator

*EPA Tier 4 Final emissions certified



TRANSMISSION

Transmission..... Hydrostatic, 1 pump, 2 motors
 with speed range select

Travel speed	Forward	Reverse
1st	1.0 - 13.0 km/h 0.6 - 8.1 mph	1.0 - 13.0 km/h 0.6 - 8.1 mph
2nd	13.0 km/h 8.1 mph	13.0 km/h 8.1 mph
3rd	19 km/h 11.8 mph	19 km/h 11.8 mph
4th	38.0 km/h 23.6 mph	38.0 km/h 23.6 mph

Measured with 20.5-R25 tires



AXLES AND FINAL DRIVES

Drive system..... Four-wheel drive
 Front..... Fixed, semi-floating
 Rear..... Center-pin support, semi-floating,
 24° total oscillation
 Reduction gear..... Spiral bevel gear
 Differential gear..... Torque proportioning
 Final reduction gear..... Planetary gear, single reduction



BRAKES

Service brakes..... Hydraulically actuated,
 wet disc brakes actuate on four wheels
 Parking brake..... Wet, multi-disc brake on transfer output shaft
 Secondary brake..... Parking brake is commonly used



STEERING SYSTEM

Type..... Articulated type, fully-hydraulic power steering
 Steering angle..... 38° each direction (40° to max end stop)
 Minimum turning radius at
 the center of outside tire..... 5175 mm **17' 0"**



HYDRAULIC SYSTEM

Steering system:
 Hydraulic pump..... Piston pump, in common
 with loader control
 Capacity..... 150 ltr/min **39.6 U.S. gal/min** at rated rpm
 Relief valve setting..... 20.6 MPa 210 kgf/cm² **3,000 psi**
 Hydraulic cylinders:
 Type..... Double-acting, piston type
 Number of cylinders..... 2
 Bore x stroke..... 70 mm x 453 mm **2.76" x 17.8"**
 Loader control:
 Hydraulic pump..... Piston pump, in common
 with steering system
 Capacity..... 150 ltr/min **39.6 U.S. gal/min** at rated rpm
 Relief valve setting..... 31.4 MPa 320 kgf/cm² **4,554 psi**
 Hydraulic cylinders:
 Type..... Double-acting, piston type
 Number of cylinders—bore x stroke:
 Lift cylinder..... 2- 110 mm x 717 mm **4.3" x 28.2"**
 Bucket cylinder..... 1- 140 mm x 480 mm **5.5" x 18.9"**
 Control valve..... 2-spool type
 Control positions:
 Boom..... Raise, hold, lower, and float
 Bucket..... Tilt-back, hold, and dump
 Hydraulic cycle time (rated load in bucket)
 Raise..... 6.0 sec
 Dump..... 2.0 sec
 Lower (Empty)..... 3.2 sec

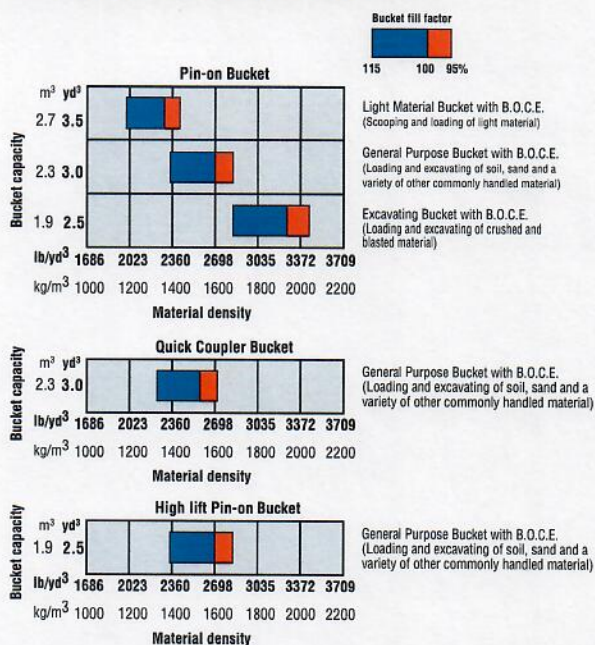


SERVICE REFILL CAPACITIES

Cooling system..... 33.3 ltr **8.8 U.S. gal**
 Fuel tank..... 186 ltr **49.1 U.S. gal**
 Engine..... 23 ltr **6.1 U.S. gal**
 Hydraulic system..... 80 ltr **21.1 U.S. gal**
 Axle front..... 18.5 ltr **4.9 U.S. gal**
 Axle rear..... 18.0 ltr **4.8 U.S. gal**
 Transfer case..... 7 ltr **1.8 U.S. gal**
 DEF tank..... 14 ltr **3.7 U.S. gal**



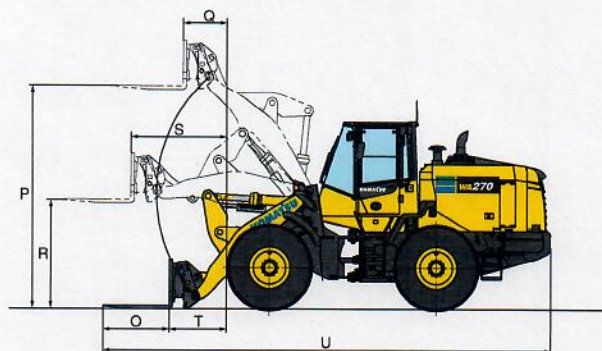
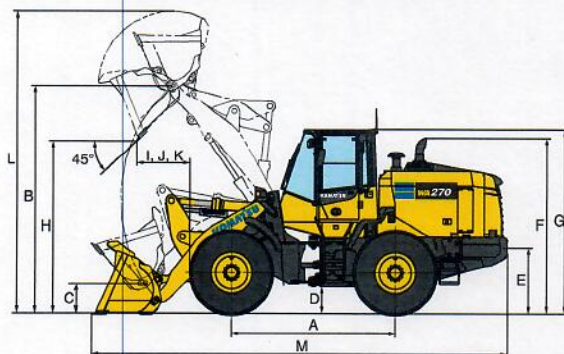
BUCKET SELECTION GUIDE





DIMENSIONS

Measured with 20.5-R25(L3) Tires, ROPS/FOPS cab



Tread		1930 mm	6'4"
Width over tires		2505 mm	8'3"
A Wheelbase		2900 mm	9'6"
B Hinge pin height,	Standard Boom	3965 mm	13'0"
max. height	High Lift Boom	4390 mm	14'5"

C Hinge pin height,	Standard Boom	515 mm	1'8"
carry position	High Lift Boom	630 mm	2'1"
D Ground clearance		465 mm	1'6"
E Hitch height		950 mm	3'1"
F Overall height, top of the stack		3050 mm	10'0"
G Overall height, ROPS cab		3200 mm	10'6"

BUCKET

		General Purpose Bucket w/ Pin On		Excavating Bucket w/ Pin On		Light Material Bucket w/ Pin On		General Purpose Bucket w/ Quick Coupler		High Lift Excavating Bucket w/ Pin On	
		B.O.C.E.		B.O.C.E.		B.O.C.E.		B.O.C.E.		B.O.C.E.	
Bucket capacity:	heaped	2.3 m ³	1.9 m ³	2.7 m ³	2.3 m ³	1.9 m ³	2.3 m ³	2.3 m ³	1.9 m ³	3.0 yd ³	2.5 yd ³
	struck	2.1 m ³	1.6 m ³	2.4 m ³	2.1 m ³	1.6 m ³	2.1 m ³	2.1 m ³	1.6 m ³	2.7 yd ³	2.1 yd ³
Bucket width		2550 mm	2550 mm	2550 mm	2685 mm	2550 mm	2550 mm	2550 mm	2550 mm	8'4"	8'4"
		8'4"	8'4"	8'4"	8'10"	8'4"	8'10"	8'4"	8'4"		
Bucket weight		970 kg	885 kg	1030 kg	1075 kg	771 kg	970 kg	885 kg	1030 kg	2,138 lb	1,951 lb
		2,138 lb	1,951 lb	2,271 lb	2,370 lb	1,700 lb	2,138 lb	1,951 lb	2,271 lb		
H Dumping clearance, max. height and 45° dump angle*		2975 mm	3055 mm	2880 mm	2865 mm	3480 mm	2975 mm	3055 mm	2880 mm	9'9"	10'0"
I Reach at max. height and 45° dump angle*		945 mm	865 mm	1040 mm	1090 mm	966 mm	945 mm	865 mm	1040 mm	3'1"	2'10"
J Reach at 2130 mm 7' clearance and 45° dump angle*		1590 mm	1545 mm	1635 mm	1635 mm	1975 mm	1590 mm	1545 mm	1635 mm	5'3"	5'1"
K Reach with arm horizontal and bucket level*		2370 mm	2255 mm	2505 mm	2450 mm	2655 mm	2370 mm	2255 mm	2505 mm	7'9"	7'5"
L Operating height (fully raised)		5285 mm	5150 mm	5435 mm	5360 mm	5700 mm	5285 mm	5150 mm	5435 mm	17'4"	16'11"
M Overall length (bucket on ground)		7360 mm	7310 mm	7475 mm	7465 mm	7750 mm	7360 mm	7310 mm	7475 mm	24'2"	24'0"
Loader clearance circle (bucket at carry, outside corner of bucket)		12050 mm	11990 mm	12130 mm	12220 mm	12370 mm	12050 mm	11990 mm	12130 mm	39'6"	39'4"
		39'6"	39'4"	39'10"	40'0"	40'7"	39'6"	39'4"	39'10"		
Digging depth:	0°	130 mm	130 mm	130 mm	110 mm	235 mm	130 mm	130 mm	130 mm	5"	5"
		5"	5"	5"	4.3"	9"	5"	5"	5"		
10°		325 mm	310 mm	350 mm	320 mm	430 mm	325 mm	310 mm	350 mm	1'1"	1'2"
		1'1"	1'2"	1'2"	1'2"	1'5"	1'1"	1'2"	1'2"		
Static tipping load: straight		10330 kg	10420 kg	10235 kg	9765 kg	9910 kg	10330 kg	10420 kg	10235 kg	22,774 lb	22,972 lb
		22,774 lb	22,972 lb	22,564 lb	21,528 lb	21,848 lb	22,774 lb	22,972 lb	22,564 lb		
40° full turn		8930 kg	9020 kg	8865 kg	8525 kg	8510 kg	8930 kg	9020 kg	8865 kg	19,687 lb	19,886 lb
		19,687 lb	19,886 lb	19,544 lb	18,794 lb	18,761 lb	19,687 lb	19,886 lb	19,544 lb		
Breakout force		131 kN	147 kN	116 kN	111 kN	154 kN	131 kN	147 kN	116 kN	13375 kgf	14965 kgf
		13375 kgf	14965 kgf	11805 kgf	11370 kgf	15700 kgf	13375 kgf	14965 kgf	11805 kgf	29,487 lb	32,992 lb
Operating weight		12880 kg	12795 kg	12940 kg	13190 kg	12910 kg	12880 kg	12795 kg	12940 kg	28,396 lb	28,208 lb
		28,396 lb	28,208 lb	28,528 lb	29,079 lb	28,462 lb	28,396 lb	28,208 lb	28,528 lb		

* At the end of tooth or B.O.C.E.

All dimensions, weights, and performance values based on ISO 7131, ISO 14397-1 and ISO 7546 standards. Static tipping load and operating weight shown include lubricant, coolant, full fuel tank, ROPS cab and operator. Machine stability and operating weight affected by tire size and attachments.

FORK

	Fork With Quick Coupler
O Fork tine length	1220 mm 4'0"
P Ground to top of tine at maximum lift	3825 mm 12'7"
Q Reach at maximum lift	810 mm 2'8"
R Ground to top of tine - boom and tine level	1840 mm 6'0"
S Reach - boom and tine level	1715 mm 5'6"
T Reach - tine level on ground	1055 mm 3'6"
U Overall length - tine level on ground	7860 mm 25'9"
Static tipping load - boom level: straight	7320 kg
	16,138 lb
fork level, tine center	40° full turn
	6405 kg 14,121 lb
Operating weight	12905 kg
	28,451 lb

Operating load per SAE J1197 (Oct, 2011), 50% of static tipping load.

Static tipping load and operating weight shown include lubricant, coolant, full fuel tank, ROPS cab and operator. Machine stability and operating weight affected by tire size and attachments.



WEIGHT CHANGES

Tires or attachments	Change in operating weight		Change in tipping load				Width over tires		Ground clearance		Change in vertical dimensions	
			Straight		Full turn							
	kg	lb	kg	lb	kg	lb	mm	ft in	mm	ft in	mm	ft in
20.5-25-12PR (L2)	-165	-364	-115	-254	-100	-220	2470	8' 1"	465	1' 6"	0	0
Remove additional counterweight	-280	-617	-515	-1135	-440	-970	0	0	0	0	0	0



STANDARD EQUIPMENT

- 2-spool valve for boom and bucket control
- Alternator, 24 V/ 90 A
- Automatic hydraulic-driven fan with automatic reverse rotation
- Back-up alarm
- Batteries, 92 Ah/12V (2), 680 CCA
- Battery disconnect
- Boom kick-out, in-cab adjustable
- Bucket positioner
- Color, rear-view camera and monitor
- Counterweight, standard and additional
- Electronically Controlled Suspension System
- Engine, Komatsu SAA6D107E-3 diesel
- Engine shut-off system, electric
- Equipment Management Monitoring System (EMMS)
 - Lights (central warning, brake oil pressure, engine oil pressure, parking brake, cooling fan reverse, KDPF restriction, seat belt caution, Komtrax message)
 - Gauges (DEF level, Engine water temperature, ecology, Fuel level, HST oil temperature, speedometer/tachometer), variable speed display
- Front fenders
- Fuel pre-filter with water separator
- Horn, electric
- Hydrostatic transmission
- Komatsu SmartLoader Logic
- Komatsu Auto Idle Shutdown
- KOMTRAX® Level 5
- Lift cylinders and bucket cylinder
- Lights
 - Back-up light
 - Stop and tail light
 - Turn signal lamps, 2 front and 2 rear with hazard switch
 - Working lights, halogen, 2 front cab mount
 - Working lights, halogen, 2 front fender mount
 - Working lights, halogen, 2 rear grill mount
- Loader linkage with standard lift arm
- Multifunction mono-lever loader control with transmission F/R switch
- Parking brake, electric
- Radiator, wider core
- Radiator mask, swing up
- Rear view mirrors, outside (2) inside (2)
- Rims for 20.5-R25 tires
- ROPS/FOPS Cab Level 2
 - 2 x DC12V electrical outlets
 - Ashtray
 - Auto air conditioner
 - Cigarette lighter, 24V
 - Color LCD/TFT multi-monitor
 - Cup holder
 - Floor mat
 - Operator seat, reclining, air suspension type, heated
 - Radio, AM/FM with AUX input jack
 - Rear defroster, electric
 - Seatbelt, 2-point retractable, 76mm 3" width
 - Space for lunch box
 - Steering wheel, tilt and telescopic
 - Sun visor, front window
 - Windshield washer and wiper, front with intermittent
 - Windshield washer and wiper, rear
- Service brakes, wet disc type
- Starting motor, 5.5 kW
- Transmission speed ranges, 4 forward and 4 reverse
- Vandalism protection kit, padlocks for battery box (2)



OPTIONAL EQUIPMENT

- Auxiliary steering (SAE)
- Centrifugal engine air pre-cleaner
- Cutting edge (bolt-on type)
- Engine oil and coolant heater
- Guarding package
- High lift boom and bucket cylinder
- Limited slip differential (F&R)
- Lube system
- Quick coupler
- Rear full fenders
- Three-spool valve (will utilize integrated proportional control switch included in the multi-function mono-lever) and piping
- Various tire options, radial and bias
- Various bucket and fork options

AESS902-04

©2019 Komatsu America Corp.

Printed in USA

AD02(1.5M)OTP

02/19 (EV1)

KOMATSU®

Note: All comparisons and claims of improved performance made herein are made with respect to the prior Komatsu model unless otherwise specifically stated.

www.komatsuamerica.com

Komatsu America Corp. is an authorized licensee of Komatsu Ltd. Materials and specifications are subject to change without notice.

KOMATSU®, Komatsu Care®, KOMTRAX® and KOMTRAX Plus® are registered trademarks of Komatsu Ltd.

All other trademarks and service marks used herein are the property of Komatsu Ltd., Komatsu America Corp. or their respective owners or licensees.