



FLORIDA SHERIFFS ASSOCIATION BID FSA20-EQU18.0  
ITEM #57 HYDRAULIC EXCAVATOR15,590 OPERATING WEIGHT

Base Kobelco SK75SR Excavator  
2-06 Rubber Tracks  
3-01 Standard Boom  
4-05 Standard Arm 10'4"  
4MNHD36 36" Excavating Bucket



Effective Date		April 1, 2020		KCMU Machine Pricing	
Engine	Make /Model	Yanmar 4TNV98CT Tier 4 Final			SK75SR-7
	Horse Power	70 hp {52.3 kW} / 2,100 RPM (SAE NET)			
	Torque	216 lb-ft {293 N • m} / 1,365 RPM (SAE NET)			
General	Energy Saving ITCS intelligent control system with ECO -Mode. Auto engine deceleration and low oil pressure shut down. Two 12 volt batteries and double element air cleaner. ROPS Cab with FOPS top guard and tinted glass, hand control pattern changer- two way ISO/BHL, heavier CWT and belly pan . Working environment includes air-conditioning and AM/FM radio.				
Shipping Dimensions	Overall Length	20'10" {6,360 mm}			
	Transport Width	8' {2,450 mm} with 600mm shoes			
	Overall Height	8'5" {2,570 mm}			
	Weight Lbs.	18,700 lb {8,490 kg}			
Shipping dimensions are based on standard machine configuration					
Code		Base Machine			
SK75SR-7	Base Machine- ROPS cab with air conditioning, dozer blade, tinted glass, AM/FM radio, travel alarm, and FOPS top guard.				
		Seat			
7-54	Mechanical Suspension Seat				
7-53	Air Suspension Heated Seat				
		Track Shoes			
2-04	Semi-Triple Grouser Shoes 23.6" (600mm) wide				
2-06	Rubber Tracks 17.7" ( 450mm ) wide				
2-10	450 mm BS Geo Grip				
2-11	17.7" (450mm) Bolt-on Rubber Pads				
		Excavator Boom			
3-01	Standard Mono Boom 12'6" (3.82m)				
		Excavator Arm			
4-05	Standard Arm 7' (2.13m)				
Items other than KCMU standard may require longer delivery time. Consult KCMU for availability and delivery of optioned equipment. Consult Sales Support for pricing questions.					



Effective Date April 1, 2020

KCMU Machine Pricing

SK75SR-7

**Code Auxiliary Hydraulics Options**

5-11 Hand control- for Nibbler/Breaker (includes piping)

5-19 Foot Control - Nibbler / Breaker (includes piping)

**Options**

5-02 Offset Boom attachment with arm and bucket cylinder

\* May not be ordered with Auxiliary Hydraulics Piping or Controls (replaces 3-01 and 4-05) Heavy Counterweight included

7-32 Cab Front Guard

*Removable heavy duty steel frame, 2 section cab guard system.*

7-33 Mesh Front Guard

7-58 Work Lights - for cab top, two lights

7-41 Hydraulic oil substitution to ISO-VG32S for cold climate

**Attachments (Drop Shipped to the Dealer)**

4MNHD12 WB 12" Heavy Duty Pin On Bucket

4MNHD18 WB 18" Heavy Duty Pin On Bucket

4MNHD24 WB 24" Heavy Duty Pin On Bucket

4MNHD36 WB 36" Heavy Duty Pin On Bucket

SLQT-3MN WB Pin Grabber Coupler

HD080-50-5096 WB Hydraulic D-Lock Coupler

*Items other than KCMU standard may require longer delivery time. Consult KCMU for availability and delivery of optioned equipment. Consult Sales Support for pricing questions.*

April 1, 2020

Note: This catalog may contain attachments and optional equipment that are not available in your area. And it may contain photographs of machines with specifications that differ from those of machines sold in your areas. Please consult your nearest KOBELCO distributor for those items you require. Due to our policy of continuous product improvements all designs and specifications are subject to change without advance notice.  
Copyright by **KOBELCO CONSTRUCTION MACHINERY CO., LTD.** No part of this catalog may be reproduced in any manner without notice.

**KOBELCO CONSTRUCTION MACHINERY U.S.A. INC.**

22350 Merchants Way, Katy, TX 77449  
Tel: 281-888-8430 Fax: 281-506-8713  
[www.KOBELCO-USA.com](http://www.KOBELCO-USA.com)

**KOBELCO** is the corporate mark used by Kobe Steel on a variety of products and in the names of a number of Kobe Steel Group companies.

Inquiries To:

Bulletin No. SK75SR/SK85CS-NA-101-190300N

**KOBELCO**

Hydraulic Excavator

**SK 75SR** SK75SR-7  
**SK 85CS** SK85CS-7

Performance  Design

■ **Bucket Capacity:**

0.14 – 0.46 cu.yd. SAE

■ **Engine Power:**

70.0 hp {52.3 kW} @ 2,100 rpm  
(SAE NET)

■ **Operating Weight:**

17,840 – 18,700 lbs  
{8,090 – 8,490 kg}

SK75SR

19,270 – 20,100 lbs  
{8,740 – 9,120 kg}

SK85CS



**DRIVEN BY  
PASSION**

Complies with the latest exhaust emission regulations



US EPA  
Tier IV Final



EU (NRMM)  
Stage V



Japanese  
Regulations



## EXCEPTIONAL PERFORMANCE JUST GOT EVEN BETTER

### KOBELCO engines comply with Tier IV emissions regulations

Low maintenance emissions. No DEF fluid required. Our latest machines offer even more power than previous models, significantly reducing cycle times. Our engines achieve high performance – maintaining both durability and efficiency even when working at high power levels, lifting heavy loads, or traveling on steep grades.



Model: YANMAR 4TNV98CT

### Engine Output

Increased ~**28%**  
(Compared to the previous size model)

### Loaded Boom Lifting Speed

Increased ~**38%**  
(Compared to the previous size model)

### Digging Cycle Time

Reduced ~**15%**  
(Compared to the previous size model)

### Arm Digging Speed

Increased ~**37%**  
(Compared to the previous size model)


### Hill-Climbing Speed


Increased ~**22%**  
(Compared to the previous size model)

### Bucket Digging Force

**14,070 lbs**  
**{62.6 kN}** (SAE)

### Lifting Capacity

SK75SR **3,320 lbs** **27.2%**   
(Ground level over side @ 15')  
(Compared to SK75SR-3E model)

SK85CS **3,570 lbs** **18.2%**   
(Ground level over side @ 15')  
(Compared to SK85CS-3E model)



View machine in  
operation





SAFETY AND CONVENIENCE IN EVERY CORNER



Standard built-in rear, left and right side cameras



Swing flashers for a safer job site



Travel alarm



Seatbelt unfastened indicator



Standard LED lights  
Bright LED lights ensure visibility even during night work



Optional front-guards (mesh or bar)



Increased clearance between the upper body and the track  
For reduced damage from debris rolled upwards by the track during operation



Adjustable height pilot valves  
Operator can adjust height of attachment control levers



Hands-free phone calls



USB charging port / 12 V power socket



Smartphone holder  
Includes USB port for charging



BS Geo Grip, bolt on rubber inserts



Easily removable bonnet



Ground level maintenance  
iNdr filter



Ground level maintenance  
Fuel filter / Fuel filter with built-in water-separator

Standard Equipment

ENGINE

- Engine, YANMAR 4TNV98CT, Diesel engine with turbocharger and intercooler, Tier IV Final certified
- Auto Idle Stop
- Automatic engine deceleration
- Batteries (2 x 12 V - 72 Ah/781 A [CCA])
- Starting motor (24 V - 3.5 kW)
- 50 amp alternator
- Engine oil pan drain valve
- Two-stage air filter

CONTROL

- Working mode selector (H-mode, S-mode and ECO-mode)

SWING SYSTEM & TRAVEL SYSTEM

- Swing rebound prevention system
- Swing flasher
- Two-speed travel with automatic shift down
- Automatic travel priority
- Sealed & lubricated track links
- 23.6" (600 mm) steel track shoes, drilled for bolt on rubber inserts
- Grease-type track adjusters
- Automatic swing brake
- Dozer blade

MIRRORS, LIGHTS & CAMERAS

- Rear view mirrors, rear view camera and side view cameras
- Three LED front working lights

SK75SR SK85CS  
SK75SR-7 SK85CS-7

CAB & CONTROL

- Two control levers, pilot-operated
- Horn, electric
- Pattern changer
- LED door light (interior)
- Coat hook
- Large cup holder
- Detachable two-piece floor mat
- Air Ride Suspension seat
- Retractable 3-inch seatbelt
- Headrest
- Handrails
- Intermittent windshield wiper with double-spray washer
- Skylight
- Tilttable FOPS overhead cab guard (ISO 10262)
- Tinted safety glass
- Pull-type front window and removable lower front window
- Easy-to-read 10-inch LED SCREEN (Multi-display monitor)
- Automatic climate control
- Emergency escape hammer
- Radio (AUX & Bluetooth)
- 12 V converter
- Hands-free telephone
- USB charging port
- Travel alarm
- Lower swivel guard

Optional Equipment

- 17.7" (450 mm) Rubber tracks
- 17.7" (450 mm) BS Geo Grip
- 17.7" (450 mm) Steel track pads with bolt on rubber inserts
- Front-guard (mesh or bar)
- Cab additional light
- Rain visor (may interfere with bucket action)
- Offset boom

- N&B hydraulic circuit
- Rotate hydraulic circuit
- Boom and arm hose burst valve
- Bolt on counterweight is available through parts department
- Dozer float function

Note: Standard and optional equipment may vary. Consult your KOBELCO dealer for specifics.



Total Support for Machines with Network Speed and Accuracy

KOMEXS is a telematics system for receiving machine information. Manage your machines anywhere in the world using the Internet. Location, workload and diagnostic data aid business operations.

Direct Access to Operational Status

Location Data

Accurate location data can be obtained even from sites where communications are difficult.

Fuel Consumption Data

Data on fuel consumption and idling times can be used to indicate improvements in fuel consumption.

Operating Hours

A comparison of operating times of machines at multiple locations shows which locations are busier and more profitable. Operating hours on site can be accurately recorded, for running time calculations needed for rental machines, etc.

Graph of Work Content

The graph shows how working hours are divided among different operating categories, including digging, idling, traveling, and optional operations (NGB).

Maintenance Data and Warning Alerts

Machine Maintenance Data

Provides maintenance status of separate machines operating at multiple sites. Maintenance data is also relayed to KOBELCO service personnel, for more efficient planning of periodic servicing.

Security System

Engine Start Alarm

Sends a notification if the engine is started outside of pre-defined hours.

Area Alarm

Sends a notification if the machine leaves a pre-defined area.



Specifications

Engine

Model	YANMAR 4TNV98CT
Type	Four-stroke, liquid-cooled, direct injection diesel, turbo charged
No. of cylinders	4
Bore and stroke	3.86" × 4.33" (98 mm × 110 mm)
Displacement	202.5 cu.in (3.318 L)
Rated power output	70.0 hp {52.3 kW} /2,100 rpm (SAE NET)
	72.0 hp {53.7 kW} /2,100 rpm (Without fan)
Max. torque	216 lb-ft {293 N·m} /1,365 rpm (SAE NET)
	218 lb-ft {296 N·m} /1,365 rpm (Without fan)

Hydraulic System

Pump	
Type	Variable displacement piston pumps + one gear pump
Max. discharge flow	2 × 19.2 gpm (2 × 72.5 L/min) 1 × 5.0 gpm (1 × 19 L/min)
Relief valve setting	
Boom, arm and bucket	4,260 psi {29.4 MPa}
Travel circuit	4,260 psi {29.4 MPa}
Swing circuit	3,550 psi {24.5 MPa}
Control circuit	725 psi {5.0 MPa}
Pilot control pump	Gear type
Main control valves	12-spool
Oil cooler	Air cooled type

Swing System

Swing motor	One fixed displacement piston motor
Brake	Hydraulic; locking automatically when the swing control lever is in the neutral position
Parking brake	Wet multiple plate
Swing speed	11.5 rpm
Swing torque	12,500 lb-ft {17 kN·m}
Tail swing radius	4'6" {1,380 mm}

Hydraulic P.T.O.

Output Specification	Maximum Pressure PSI (Mpa)	Max. Flow US GPM, (lpm)
		(0 pressure) 2,100 rpm
N&B	4,770 (32.9)	38 (145)
Rotary	3,130 (21.6)	12.7 (48)

Bucket Selection Chart

Bucket type	Bucket Capacity cu.yd. (SAE) {m³}	Bucket Width inches {m}	Bucket Weight lbs {kg}	Arm ft-in (m)
				7'0" {2.13 m}
Standard	0.14 {0.11}	16" {0.4}	330 {150}	H
Heavy Duty	0.18 {0.14}	16" {0.41}	350 {160}	H
	0.23 {0.18}	19" {0.48}	370 {170}	H
	0.29 {0.22}	23" {0.58}	420 {190}	H
	0.37 {0.28}	27" {0.68}	460 {210}	H

H – Used with material weight up to 3,000 lbs/cu.yd. (1,780 kg/m³)

Travel System

Travel motors	Variable displacement piston, two-speed motors
Travel brakes	Hydraulic brake
Parking brakes	Wet multiple plate
Travel shoes	39 each side
Travel speed	1.7/3.1 mph {2.7/5 km/h}
Drawbar pulling force	17,300 lbs {77 kN}
Gradeability	58% {30°}

Cab & Control

Cab
All-weather, sound-suppressed steel cab mounted on silicon-sealed viscous mounts and equipped with a heavy, insulated floor mat
Control
Two hand levers and two foot pedals for travel
Two hand levers for excavating and swing
Electric rotary-type engine throttle

Boom, Arm & Bucket

Boom cylinders	4.3" {110 mm} × 3' {916 mm}
Arm cylinder	3.7" {95 mm} × 2'9" {839 mm}
Bucket cylinder	3.3" {85 mm} × 2'6" {762 mm}

Dozer Blade

Dozer cylinder	5.3" {135 mm} × 5.1" {129 mm}
Dimension	8'0" {2,450 mm} (width) × 18" {460 mm} (height)
Working range	14" {360 mm} (up) × 10" {250 mm} (down)

Refilling Capacities & Lubrications

Fuel tank	31.7 U.S.gal {120 L}
Cooling system	3.4 U.S.gal {12.8 L}
Engine oil	3.1 U.S.gal {11.8 L}
Travel reduction gear	2 × 0.3 U.S.gal {1.3 L}
Swing reduction gear	0.4 U.S.gal {1.5 L}
Hydraulic oil tank	11.6 U.S.gal {44 L}: Tank oil level
	22.2 U.S.gal {84 L}: Hydraulic system

Working Ranges

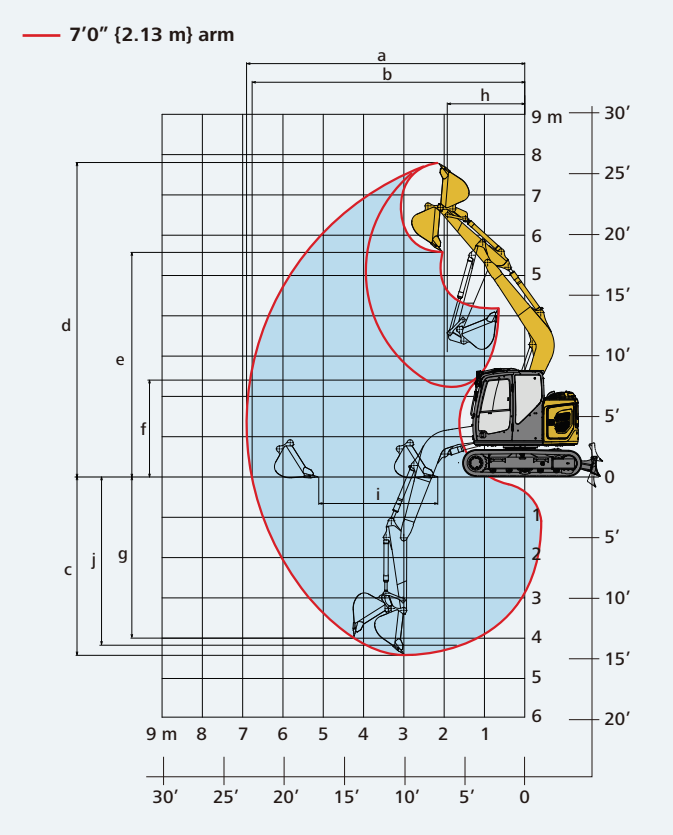
Unit: ft-in {m}	
Boom	12'6" {3.82 m}
Arm	7'0" {2.13 m}
Range	
a- Max. digging reach	22'7" {6.88}
b- Max. digging reach at ground level	22'2" {6.76}
c- Max. digging depth	15'0" {4.58}
d- Max. digging height	25'5" {7.75}
e- Max. dumping clearance	18'7" {5.67}
f- Min. dumping clearance	7'2" {2.19}
g- Max. vertical wall digging depth	13'7" {4.14}
h- Min. swing radius	7'0" {2.13}
i- Horizontal digging stroke at ground level	10'6" {3.21}
j- Digging depth for 8' (2.4 m) flat bottom	14'2" {4.31}

Digging Force (ISO 6015)		Unit: lbs {kN}	
Arm length		7'0" {2.13 m}	
Bucket digging force	SAE	14,070 {62.6}	
	ISO	15,900 {70.9}	
Arm crowding force	SAE	7,700 {34.2}	
	ISO	7,900 {35.2}	

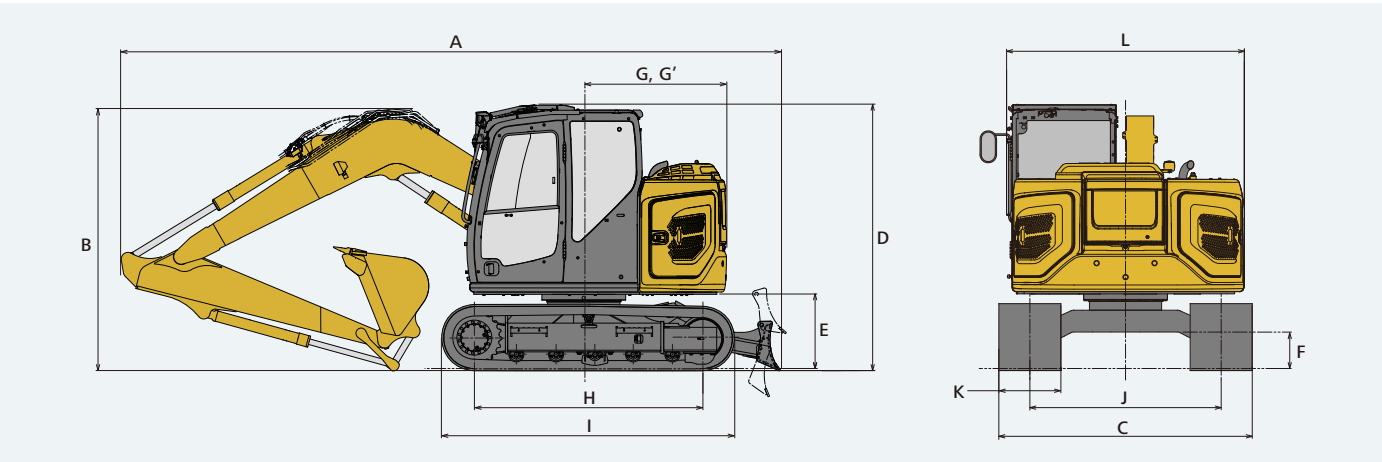
Dimensions

Unit: ft-in {mm}	
Arm length	
7'0" {2.13 m}	
A Overall length	20'10" {6,360}
B Overall height (to top of boom)	8'4" {2,540}
C Overall width (23.6" {600 mm} shoes)	8'0" {2,450}
D Overall height (to top of cab)	8'5" {2,570}
E Ground clearance of rear end*	2'4" {720}
F Ground clearance*	14" {355}
G Tail swing radius	4'6" {1,380}
G' Distance from center of swing to rear end	4'6" {1,380}

\*Without including height of shoe lug \*\*17.7" {450 mm} Rubber tracks, 23.6" {600 mm} Steel shoes



H Tumbler distance	7'3" {2,210}
I Overall length of crawler	9'3" {2,830}
J Track gauge	6'1" {1,850}
K Shoe width**	17.7" {450}/23.6" {600}
L Overall width of upperstructure	7'7" {2,300}



Operating Weight & Ground Pressure

In standard trim, with standard boom, 7'0" {2.13 m} arm, and 0.29 cu.yd. {0.22 m³} ISO heaped bucket

Shaped		Rubber tracks	Steel tracks
Shoe width	ft-in {mm}	17.7" {450}	23.6" {600}
Overall width of crawler	ft-in {mm}	7'7" {2,300}	8'0" {2,450}
Ground pressure	psi {kPa}	5.28 {36}	4.2 {29}
Operating weight	lbs {kg}	17,840 {8,090}	18,700 {8,490}