

Distributor:	Linder Machinery
Item # 58	

KOMATSU PC88MR-10 EXCAVATOR BUILD SHEET

Standard Equipment for Base Machine

Engine and its related items:

Komatsu SAA4D95LE 65.5 net hp, 4 cylinder, turbo charged direct injection diesel engine, 4- cycle liquid cooled Tier 4 Final emissions certified, Variable Flow Turbocharger, Komatsu Diesel Oxidation Catalyst (KDOC), EGR system and Closed Crankcase Ventilation (CCV) suction type cooling fan with guard, Spin-on fuel and engine oil filters, Fuel, water separator with shut-off, Direct Flow (2 element) air cleaner with dust indicator

Electrical system:

Alternator, 60 Ampere, 24V
4.5kW starter motor
Boom mounted work light
Two cab mounted work lights

Undercarriage:

18" Steel triple grouser shoe,
Hydraulic track adjusters,
Heavy duty sloped track frame with operator steps

Guards and Covers:

Diesel tank with ground level fuel fill located under lockable side covers, Hydraulic tank located under a lockable side cover

Operator environment:

Cab with heater and air conditioner, Overhead opening front window, AM/FM radio, Lockable door, Hydraulic lock lever, Suspension seat with adjustable armrests and retractable 3" wide seat belt, Electronically controlled throttle, Horn Travel alarm, Rear view mirror, Two cab mounted work lights Large LCD high resolution color monitor panel
Working mode selection, Equipment Management Monitoring System (EMMS) with self diagnostic system monitoring, Maintenance tracking and records, Fault code memory storage, Energy saving advice, Hydraulic flow adjustments for attachments
Engine oil pressure monitor with audible alarm
Pre-heating monitor with buzzer, Engine coolant temperature gage with audible alarm and indicator light, Travel speed indicator lamp
Service meter, Hydraulic oil sight gage, Fuel gage with low level indicator light.

Bucket

36" w/ teeth

Hydraulic controls:

Pilot proportional (2) level controls, control pattern change valve (SAE/ISO), Auxiliary hydraulics selector valve for bi-directional flow return to tank, proportional control on joystick for auxiliary hydraulics, auxiliary circuit return filter and accumulator
Closed center load sensing hydraulics, Two variable capacity piston pumps and one gear pump, O-ring face seal fittings, Auxiliary hydraulic control mounted on right joystick
Pattern change valve (ISO to BH control)

Drive and brake system

Hydrostatic drive , Automatic load sensing two speed travel, Axial piston motor type final drive, Automatic swing brake

Other Standard Equipment

KOMTRAX 4.0 monitoring system (Cellular 2G / 3G System)
Operator ID System
Marks and plates, English
Electric horn
Komatsu standard paint
Counterweight, 805 kg, 1775 lb
Travel alarm
Rearview monitoring system (1 camera)
Standard 7' 7" (2330 mm) blade assembly with up/down control
Auto Idle Stop System
Swing boom

KOMATSU®

PC88MR-10

Tier 4 Final Engine

COMPACT HYDRAULIC EXCAVATOR



Photos may include optional equipment.

NET HORSEPOWER

65.5 HP @ 1950 rpm

48.8 kW @ 1950 rpm

OPERATING WEIGHT

18,739–19,290 lb

8500–8750 kg

PC88MR



PERFORMANCE AND VERSATILITY

Standard value added features provide operators with Flexible Jobsite Performance.

New engine and hydraulic technology improves operational efficiency and lowers fuel consumption by up to 4%.**

A powerful **Komatsu SAA4D95LE-6 engine** provides a net output of 48.8 kW **65.5 HP**. This engine is EPA Tier 4 Final emissions certified.

Komatsu Diesel Oxidation Catalyst (KDOC) reduces particulate matter using passive regeneration 100% of the time.

No AdBlue®/DEF or DPF is required.

Variable Flow Turbocharger is designed to provide optimum air flow under all speed and load conditions.

Komatsu's Closed-center Load Sensing System (CLSS) provides quick response and smooth operation to maximize productivity.

Enhanced working modes are designed to match engine speed, pump delivery, and system pressure to the application.

Large LCD color monitor panel:

- 7" high resolution screen
- Provides "Ecology Guidance" for fuel efficient operation
- Enhanced attachment control

Rearview monitoring system (standard)

Equipment Management Monitoring System (EMMS) continuously monitors machine operation and vital systems to identify machine issues and assist with troubleshooting.

Enhanced working environment

- High back, suspension operator seat
- Integrated ROPS cab design
- Cab meets ISO Level 1 Operator Protective Guard (OPG) top guard
- Aux jack and (2) 12V outlets

Minimum Swing Radius with swing boom allows the PC88MR-10 to fit in confined spaces at jobsites.



Wide access service doors provide easy access for ground level maintenance.

Standard Auxiliary Piping for Attachments

Operator Identification System

Battery disconnect switch allows a technician to disconnect the power supply before servicing the machine.

Komatsu designed and manufactured components

Convenient access for maintenance and daily checks.

Komatsu Auto Idle Shutdown helps reduce idle time and operating costs.

Standard 7'7" 2330mm blade

Standard pattern change valve

Two travel speeds

* Thumb is not standard ** All comparisons are to the prior model, unless otherwise stated.

KOMTRAX EQUIPMENT MONITORING

GET THE WHOLE STORY WITH
KOMTRAX®



WHAT

- KOMTRAX is Komatsu's remote equipment monitoring and management system
- KOMTRAX **continuously monitors and records** machine health and operational data
- Information such as fuel consumption, utilization, and a detailed history **aids in making repair or replacement decisions**



WHEN

- Know when your machines are **running or idling** and make decisions that will improve your fleet utilization
- Detailed movement records ensure you know when and where your equipment is moved
- Up to date records allow you to **know when maintenance was done** and help you plan for future maintenance needs



WHERE

- KOMTRAX data **can be accessed virtually anywhere** through your computer, the web or your smart phone
- Automatic alerts keep fleet managers up to date on the latest machine notifications



WHY

- Knowledge is power - **make informed decisions** to manage your fleet better
- Knowing your idle time and fuel consumption will help maximize your machine efficiency
- Take control of your equipment** - any time, anywhere

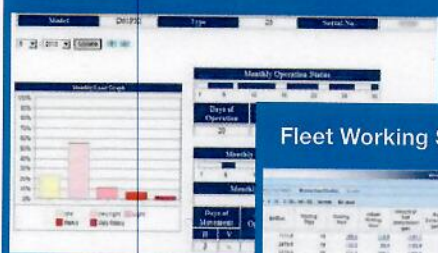


WHO

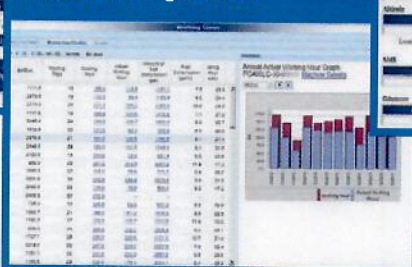
- KOMTRAX is **standard** equipment on all Komatsu construction products



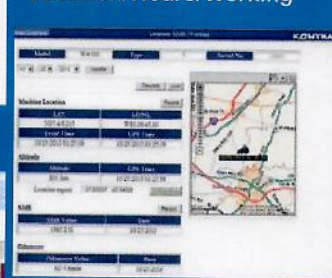
Monthly Operational Analysis



Fleet Working Status



Location/Hours/Working



KOMTRAX®

For construction and compact equipment.

KOMTRAX Plus®

For production and mining class machines.

KOMATSU PARTS & SERVICE SUPPORT



KOMATSU CARE

Program Includes:

*The PC88MR-10 comes standard with complimentary factory scheduled maintenance for the first 3 Years or 2,000 Hours, whichever comes first.

Planned Maintenance Intervals at:

500/1000/1500/2000 hour intervals. (250 hr. initial interval for some products) Complimentary Maintenance Interval includes: Replacement of Oils & Fluid Filters with genuine Komatsu Parts, 50-Point inspection, Komatsu Oil & Wear Analysis Sampling (KOWA) / Travel & Mileage (distance set by distributor; additional charges may apply)

Benefits of Using Komatsu CARE

- Assurance of Proper Maintenance with OEM Parts & Service
- Increased Uptime & Efficiency
- Factory Certified Technicians Performing Work
- Cost of Ownership Savings
- Transferable Upon Resale

KOMATSU CARE PC88MR-10				
Interval PM	500	1000	1500	2000
KOWA SAMPLING – (Engine, Hydraulics, Swing Circle, L & R Final Drives)	✓	✓	✓	✓
LUBRICATE MACHINE	✓	✓	✓	✓
LUBRICATE SWING CIRCLE	✓	✓	✓	✓
CHECK SWING PINION GREASE LEVEL AND ADD, WHEN NECESSARY	✓	✓	✓	✓
CHANGE ENGINE OIL	✓	✓	✓	✓
REPLACE ENGINE OIL FILTER	✓	✓	✓	✓
REPLACE FUEL PRE-FILTER	✓	✓	✓	✓
CLEAN AIR CLEANER ELEMENT	✓	✓	✓	✓
DRAIN SEDIMENT FROM FUEL TANK	✓	✓	✓	✓
COMPLETE 50 POINT INSPECTION FORM; LEAVE PINK COPY WITH CUSTOMER OR IN CAB	✓	✓	✓	✓
RESET MONITOR PANEL MAINTENANCE COUNTER FOR APPROPRIATE ITEMS	✓	✓	✓	✓
REPLACE MAIN FUEL FILTER		✓		✓
FACTORY TRAINED TECHNICIAN LABOR	✓	✓	✓	✓

* Certain exclusions and limitations apply. Refer to the customer certificate for complete program details and eligibility. Komatsu® and Komatsu Care® are registered trademarks of Komatsu Ltd. Copyright 2018 Komatsu America Corp.

Komatsu CARE® – Extended Coverage

- Extended Coverage can provide peace of mind by protecting customers from unplanned expenses that effect cash flow
- Purchasing extended coverage locks-in the cost of covered parts and labor for the coverage period and helps turn these into fixed costs



Komatsu Parts Support

- 24/7/365 to fulfill your parts needs
- 9 parts Distribution Centers strategically located across the U.S. and Canada
- Distributor network of more than 300 locations across U.S. and Canada to serve you
- Online part ordering through Komatsu eParts
- Remanufactured components with same-as-new warranties at a significant cost reduction



Komatsu Oil and Wear Analysis (KOWA)

- KOWA detects fuel dilution, coolant leaks, and measures wear metals
- Proactively maintain your equipment
- Maximize availability and performance
- Can identify potential problems before they lead to major repairs
- Reduce life cycle cost by extending component life

PC88MR-10

SPECIFICATIONS



ENGINE

Model.....Komatsu SAA4D95LE-6*
 Type.....Water-cooled, 4-cycle, direct injection
 Aspiration...Variable flow, turbocharged, air-to-air aftercooled EGR
 Number of cylinders.....4
 Bore.....95 mm **3.74"**
 Stroke.....115 mm **4.52"**
 Piston displacement.....3.26 ltr **199 in³**
 Horsepower:
 SAE J1995.....Gross 50.7 kW **67.9 HP**
 ISO 9249 / SAE J1349.....Net 48.8 kW **65.5 HP**
 Rated rpm.....1950
 Governor.....All-speed control, electronic
 Lubrication system:
 Method.....Gear pump, force-lubrication
 Filter.....Full-flow
 Air cleaner.....Air cleaner, double element and auto dust evacuator

*EPA Tier 4 Final emissions certified



HYDRAULICS

Type.....HydrauMind (Hydraulic Mechanical Intelligence) system, closed-center system with load sensing valve and pressure compensated valve

Main pumps:

Pumps for.....Boom, arm, bucket, and travel circuits
 Type.....Variable capacity piston type, axial piston
 Maximum flow.....160 ltr/min **42.2 gal/min**
 Pumps for.....Swing and blade
 Type.....Fixed displacement gear
 Maximum flow.....70 ltr/min **18.5 gal/min**

Hydraulic motors:

Travel.....2 x piston motor with parking brake
 Swing.....1 x axial piston motor with swing holding brake

Relief valve setting:

Implement circuits.....26.5 MPa 270 kgf/cm² **3,844 psi**
 Swing circuit.....21.1 MPa 215 kgf/cm² **3,060 psi**
 Pilot circuit.....3.2 MPa 33 kgf/cm² **464 psi**
 Blade circuit (Raise).....12.7 MPa 130 kgf/cm² **1,842 psi**
 Blade circuit (Lower).....21.1 MPa 215 kgf/cm² **3,060 psi**

Hydraulic cylinders:

(Number of cylinders – bore x stroke x rod diameter)

Boom 2–115 mm x 988 mm x 65 mm **4.53" x 38.9" x 2.56"**
 Arm.....1–100 mm x 861 mm x 60 mm **3.9" x 33.9" x 2.36"**
 Bucket 1–90 mm x 710 mm x 55 mm **3.54" x 27.95" x 2.17"**
 Swing.....1–120 mm x 638 mm x 60 mm **4.72" x 25.12" x 2.36"**
 Blade.....1–130 mm x 200 mm x 65 mm **5.12" x 7.87" x 2.56"**

Auxiliary hydraulics:

Auxiliary hydraulic flow.....125 ltr/min **33.0 gal/min**
 Relief.....26.51 MPa **3,830 psi**
 Breaker mode.....80 ltr/min **21.1 gal/min**
 Relief in breaker mode.....17.17 MPa **2,490 psi**



SWING SYSTEM

Driven by.....Hydraulic motor
 Swing reduction.....Planetary gear
 Swing circle lubrication.....Grease-bathed
 Swing lock.....Mechanical disc brake
 Swing speed.....10 rpm



UNDERCARRIAGE

Center frame.....X-frame leg
 Track frame.....Box-section
 Track type.....Sealed
 Track adjuster.....Hydraulic
 Number of shoes (each side).....39
 Number of carrier rollers (each side).....1
 Number of track rollers (each side).....5



COOLANT & LUBRICANT CAPACITY (REFILLING)

Fuel tank.....125 ltr **33 U.S. gal**
 Radiator.....13 ltr **3.43 U.S. gal**
 Engine.....11.5 ltr **3.04 U.S. gal**
 Final drive, each side.....1.1 ltr **.29 U.S. gal**
 Swing drive.....2.8 ltr **.74 U.S. gal**
 Hydraulic tank.....56 ltr **14.8 U.S. gal**



OPERATING WEIGHT (APPROXIMATE)

Operating weight includes 3405 mm **11'2"** one-piece boom, 2100 mm **6'11"** arm, SAE heaped 0.2 m³ **0.26 yd³** bucket, blade, rated capacity of lubricants, coolant, full fuel tank, operator, and standard equipment.

Track Shoes	Operating Weight	Ground Pressure (ISO 16754)
Road liner	8720 kg	38.2 kPa / 0.39 kg/cm ²
450 mm 18"	19,224 lb	5.54 psi
Triple grouser	8580 kg	38.2 kPa / 0.39 kg/cm ²
450 mm 18"	18,916 lb	5.54 psi
Triple grouser	8750 kg	29.4 kPa / 0.30 kg/cm ²
600 mm 24"	19,290 lb	4.26 psi
Rubber shoe	8500 kg	37.3 kPa / 0.38 kg/cm ²
450 mm 18"	18,739 lb	5.41 psi



WORKING FORCES

	Arm Length	2100 mm 6'11"
ISO rating	Bucket digging force	61.3 kN / 6250 kgf / 13,781 lb
	Arm crowd force	36.3 kN / 3700 kgf / 8,161 lb
SAE rating	Bucket digging force	53.3 kN / 5440 kgf / 11,982 lb
	Arm crowd force	34.3 kN / 3500 kgf / 7,711 lb



DRIVES AND BRAKES

Steering control.....Two levers with pedals
 Drive method.....Fully hydrostatic
 Maximum drawbar pull.....66.9 kN 6820 kgf **15,040 lbf**
 Maximum travel speed: High.....5 km/h **3.1 mph**
 Low.....3 km/h **1.9 mph**
 Service brake.....Hydraulic lock
 Parking brake.....Mechanical disc

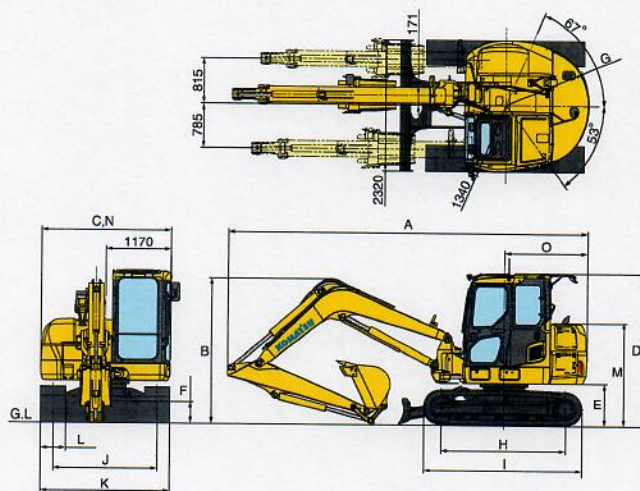
SPECIFICATIONS



DIMENSIONS

	Boom length	3405 mm	11'2"
A	Overall length	6430 mm	21'1"
B	Overall height (to top of boom)	2615 mm	8'7"
C	Overall width	2330 mm	7'8"
D	Overall height (to top of cab)*	2760 mm	9'1"
E	Ground clearance, counterweight	785 mm	2'7"
F	Ground clearance, minimum	410 mm	1'4"
G	Tail swing radius	1485 mm	4'10"
H	Track length on ground	2235 mm	7'4"
I	Track length*	2890 mm	9'6"
J	Track gauge	1870 mm	6'2"
K	Width of crawler	450 mm 18" shoe	2170 mm 7'2"
		600 mm 24" shoe	2320 mm 7'7"
L	Shoe width	450 mm	1'6"
M	Machine engine hood height	1885 mm	6'2"
N	Machine cab width	2330 mm	7'8"
O	Distance, swing center to rear end	1485 mm	4'10"

* : Dimension of the machine with the triple grouser shoes.

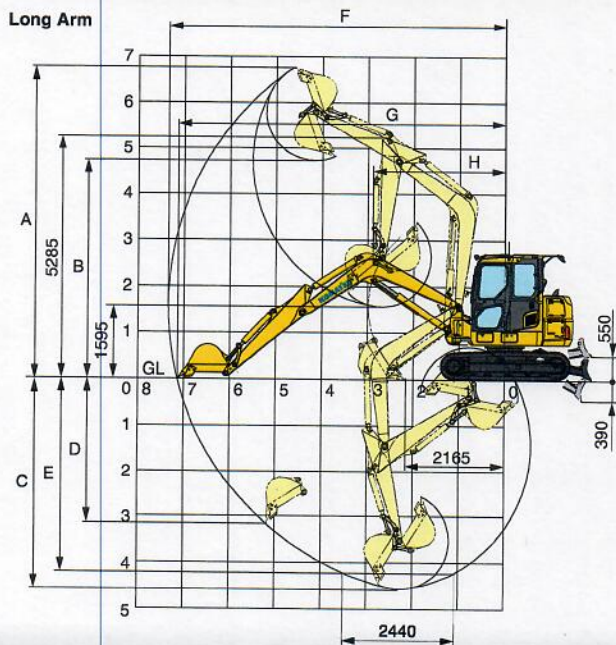


BACKHOE BUCKET, ARM AND BOOM COMBINATIONS

Bucket Capacity (heaped)				Width				Weight		Number of Teeth	Arm Length
SAE, PCSA	CECE			Without Cutters	With Cutters						2100 mm (6'11")
0.09 m ³	0.12 yd ³	0.08 m ³	0.10 yd ³	350 mm	13.7"	450 mm	17.7"	145 kg	319.7 lb	3	0
0.12 m ³	0.16 yd ³	0.11 m ³	0.14 yd ³	450 mm	17.7"	550 mm	21.7"	160 kg	352.7 lb	3	0
0.20 m ³	0.26 yd ³	0.18 m ³	0.24 yd ³	550 mm	21.7"	650 mm	25.6"	185 kg	407.9 lb	3	0



WORKING RANGE



	Arm Length	2100 mm	6'11"
A	Max. digging height	6800 mm	22'4"
B	Max. dumping height	4770 mm	15'8"
C	Max. digging depth	4565 mm	15'0"
D	Max. vertical wall digging depth	3115 mm	10'3"
E	Max. digging depth of cut for 8' level bottom	4200 mm	13'9"
F	Max. digging reach	7345 mm	24'1"
G	Max. digging reach at ground level	7135 mm	23'5"
H	Min. swing radius	2900 mm	9'6"
	(When boom swing)	(2545 mm)	8'4"
SAE rating	Bucket digging force	53.3 kN	
		5440 kg / 11,982 lb	
	Arm crowd force	34.3 kN	
		3500 kgf / 7,710 lb	
ISO rating	Bucket digging force	61.3 kN	
		6250 kg / 13,780 lb	
	Arm crowd force	36.3 kN	
		3700 kgf / 8,160 lb	



STANDARD EQUIPMENT

- 2320 mm **7'7"** blade
- Alternator, 60 Ampere, 24V
- AM/FM radio
- Automatic engine warm-up system
- Automatic air conditioner/heater
- Auxiliary input (3.5mm jack)
- Battery disconnect switch
- Converter, (2) x 12V
- Counterweight, 805 kg **1,775 lb**
- Dry type air cleaner, double element
- Electric horn
- EMMS monitoring system
- Engine, Komatsu SAA4D95LE-6
- Engine overheat prevention system
- Extended work equipment grease interval
- Fan guard structure
- Fuel system pre-cleaner 10 micron
- Hydraulic control unit, 1 actuator
- Hydraulic track adjusters
- KOMTRAX®
- Large LCD color monitor, high resolution
- Lock lever
- Mirrors, (LH and RH)
- Operator Protective Top Guard (OPG), Level 1
- Pattern change valve (ISO to BH control)
- PPC hydraulic control system
- Pump/engine room partition cover
- Radiator and oil cooler dustproof net
- Rear reflectors
- Rearview monitoring system (1 camera)
- ROPS cab
- Seat belt, retractable, 76mm **3"**
- Seat belt indicator
- Secondary engine shutoff switch
- Service valve
- Shoes, road liner, 450 mm **18"**
- Skylight
- Slip resistant foot plates
- Starter motor, 4.5kW
- Suction fan
- Swing boom
- Thermal and fan guards
- Travel alarm
- Working lights, 2 cab/1 boom LH
- Working mode selection system



OPTIONAL EQUIPMENT

- Arm, 2100 mm **6'11"** arm assembly with auxiliary piping
- Boom, 3405 mm **11'2"** assembly with auxiliary piping
- Power Angle 4 Way Blade (2296 mm **7'6"**)
- Shoes, rubber shoe, 450 mm **18"**
- Shoes, triple grouser, 450 mm **18"**
- Shoes, triple grouser, 600 mm **24"**
- Wide blade 2470 mm **8'1"** (requires 600 mm **24"** shoes)



ATTACHMENT OPTIONS

- Buckets
- Hydraulic couplers
- Thumb

For a complete list of available attachments, please contact your local Komatsu distributor.



AESS859-04

©2019 Komatsu America Corp.

Printed in USA

AD08(3M)OTP

08/19 (EV-1)

KOMATSU®

Note: All comparisons and claims of improved performance made herein are made with respect to the prior Komatsu model unless otherwise specifically stated.

www.komatsuamerica.com

Komatsu America Corp. is an authorized licensee of Komatsu Ltd. Materials and specifications are subject to change without notice.

KOMATSU®, Komatsu Care® and KOMTRAX® are registered trademarks of Komatsu Ltd.

All other trademarks and service marks used herein are the property of Komatsu Ltd., Komatsu America Corp. or their respective owners or licensees.