

**FSA20-EQU18.0, ITEM# 418**  
**TRACTOR: Agriculture Tractor - 4x2**  
**MASSEY FERGUSON MF4709 SHERIFF'S CONTRACT WORKSHEET**

**MASSEY FERGUSON 4709 BASE**

**CUSTOMER:** FLORIDA SHERIFF'S ASSOCIATION  
FSA20-EQU18.0 ITEM# 418

<b>UNIT QUOTED:</b>	<b>MASSEY</b>	<b>SALESPERSON:</b>	
<b>MODEL:</b>	<b>4709</b>	<b>S/N#:</b>	<b>New</b>

<b>FACTORY CODES:</b>	<b>MF4709-ES</b>
<b>FACTORY CODES:</b>	<b>25-EA706/EC017</b>
<b>FACTORY CODES:</b>	<b>35-EN000</b>
<b>FACTORY CODES:</b>	<b>50-KX032</b>
<b>FACTORY CODES:</b>	<b>100-LA108</b>
<b>FACTORY CODES:</b>	<b>40-CC004</b>
<b>FACTORY CODES:</b>	<b>350-LL000</b>
<b>FACTORY CODES:</b>	<b>75-W1835</b>
<b>FACTORY CODES:</b>	
<b>FACTORY CODES:</b>	
<b>FACTORY CODES:</b>	

<b>DESCRIPTION:</b>	<b>4709 Deluxe Edition, Platform 2WD</b>	<b>\$ 47,746.00</b>
<b>DESCRIPTION:</b>	<b>12 x 12 Synchro Power Shuttle</b>	<b>In Base</b>
<b>DESCRIPTION:</b>	<b>Without Creeper Gear</b>	<b>In Base</b>
<b>DESCRIPTION:</b>	<b>2 Mechanically Controlled Spool Valves</b>	<b>In Base</b>
<b>DESCRIPTION:</b>	<b>540/540E RPM PTO, External Control</b>	<b>In Base</b>
<b>DESCRIPTION:</b>	<b>Vertical Exhaust with Heat Shield</b>	<b>In Base</b>
<b>DESCRIPTION:</b>	<b>Without Loader Provision</b>	<b>In Base</b>
<b>DESCRIPTION:</b>	<b>Tires Rear: 420/85R30 (16.9R30) R1</b>	<b>In Base</b>
<b>DESCRIPTION:</b>	<b>Tires Front: 9.5L-15 F2</b>	<b>In Base</b>
<b>DESCRIPTION:</b>		
<b>DESCRIPTION:</b>		



MASSEY FERGUSON®

# MF 4700 PLATFORM

(F.O.B. PORT OF ENTRY)

## TRACTOR FEATURES

### ENGINE SYSTEM

- AGCO Power 33AWIC 3 Cylinder (Turbocharged)  
EPA Tier 4 Final and CARB Certified  
**MF4707** - Diesel Oxidation Catalyst (DOC), Exhaust Gas Recirculation (EGR)  
**MF4708/4709/4710** - SCR Technology (Post-Combustion DEF), Diesel Oxidation Catalyst (DOC)
- Air Cleaner: Dual Element Dry Type
- Air Cleaner Intake, Under Hood
- Vertical Exhaust
- Cooling System: Antifreeze 50/50 Mix
- Cold Starting Aid: Intake Heater

### HORSEPOWER

(Max Engine @ 2000 RPM; Rated Engine & PTO @ 2200 RPM)

- MF4707** Deluxe Powershuttle Only:  
75 Max Engine HP, 70 Engine HP, 58 PTO HP
- MF4708** Deluxe Powershuttle:  
85 Max Engine HP, 80 Engine HP, 67 PTO HP
- MF4709** Deluxe Powershuttle:  
95 Max Engine HP, 90 Engine HP, 77 PTO HP
- MF4710** Deluxe Powershuttle:  
100 Max Engine HP, 99 Engine HP, 87 PTO HP

### FRONT AXLE

- 2wd: Adjustable
- 4wd: Dana 720, Center Driveline, Open Differential, Standard Hydraulically Actuated Differential Lock

### POWERTRAIN

- Transmission: 25 mph (40 kph)  
12 X 12 Synchro Power Shuttle (6 Gears, 2 Ranges, with Declutch on Main Gear Lever)
- Rear Axle: Inboard Planetary Final Drives, with HydraLock Differential Lock, Flanged Rear Axle
- Brakes: Independent Oil Immersed Wet Disc Brakes with Independent Foot Pedal Operation  
Hook and Lever Parking Brake
- PTO: Independent 540/540E RPM, External Control with 6 Spline Non-Flanged Shaft (1-3/8 In. Diameter), Independent Wet Disc Clutch, Electro-hydraulic Engagement

### HYDRAULIC SYSTEM

- 2 Mechanically Controlled Spool Valves (1 x DA KO FL + 1 x DA KO FL)
- Implement System:  
Open Center System, Engine Driven Gear Pump  
17.1 GPM (65 LPM) Flow  
Optional Cable-controlled Loader Joystick with Mid Valves
- Rear Linkage:  
ASAE Category II with Telescopic Ball Ends  
Lift Capacity at 24": 4850 LBS (2200 KG)  
2 Adjustable Rear Linkage Turnbuckles  
Standard Telescopic Stabilizers
- Swing Straight Drawbar with 350/400/500mm Positions, Cat 2 Clevis

### ELECTRICAL

- 12 Volt DC, Negative Ground
- Intake Air Pre Heater
- High Capacity Wet Charge, Maintenance Free SAE 720 CCA Battery
- 80 AMP Alternator
- Ignition: Key with Safety Start
- Keyed Engine Shutoff
- Lighting: 4 Headlights, 2 Rear Marker Light Assemblies
- Mid Mounted Work Lights
- Rear Brake Lights
- Standard 1 Rear Work Light
- 7 Pin ASAE Outlet Socket
- 30 Amp Auxiliary Electrical Socket

### INSTRUMENTS

- Digital & Analog Instrument Panel with Performance Monitor
- Analog Engine Tachometer
- Analog Fuel Gauge
- Analog Engine Temperature
- Digital Transmission Display
- Digital Hour Meter
- Operation and Service Lights

### OPERATOR ENVIRONMENT (PLATFORM MODELS)

- Semi-Flat Floor Platform with Rubber Floor Mat
- Hand Rail with Glass Heat Shields
- Lever Controlled 3-Point Linkage with Draft Control
- 2 Post Folding ROPS
- Tilt Steering Column
- Mechanical Spring Suspension Seat with Armrests
- Retractable Seat Belt
- Cup Holder
- Pendant Style (Suspended) Foot Pedals
- Hand and Foot Throttle
- Left Side and Right Side Foot Step Entry
- External 3-Point Lift Control on Left Hand Side Fender

### OTHER STANDARD FEATURES

- Fuel Tank Under Platform, Ground Fill  
Fuel Capacity: 27.7 Gallons (105 Liters)
- One-Piece Tilting Hood
- Rear Fender Side Extensions - 100mm
- Fuel Tank Guard
- Tool Box
- SMV Sign



MASSEY FERGUSON

Global  
Series



**FROM MASSEY FERGUSON**  
A world of experience. Working with you.



# AN INVESTMENT IN THE FUTURE OF UTILITY TRACTORS.

For more than 170 years, we've been perfecting the utility tractor. And even though more than four million of ours have shown up for work on farms and jobs like yours around the world, we're never quite satisfied.

## Introducing the Massey Ferguson® Global Series.

A part of a \$350 million investment, the largest manufacturing and new product project in AGCO® history, the Global Series has been completely engineered from the ground up and built in our new state-of-the-art manufacturing facility. These Massey Ferguson 4700, 5700 and 6700 Series tractors are the result of years of insight from farmers, contractors, operators and dealers from around the world. And they have been put through more than 65,000 hours of rigorous endurance testing in extreme weather and terrain conditions in

seven different sites around the globe. From the rice paddies of Southeast Asia to the oppressive heat of Africa to the bitter cold of Northern Europe to the grueling applications required for farming in North America, these tractors have been through it all.

These heavy-duty tractors are purpose-built for more lift capacity and the power to pull larger, heavier implements. Now, and well into the future.

### 4700 SERIES

# BIG

**70-100 RATED ENGINE HP** — Choose a base weight of 7,478-8,644 lbs. and a lift capacity of 4,850 lbs. Plus our AGCO Power™ three-cylinder 3.3L engine with a hydraulic flow of 17.7 GPM.



### 5700 SERIES

# BIGGER

**95-105 RATED ENGINE HP** — Step up to a base weight of 8,845-10,011 lbs. with 7,710 lbs. of lift capacity. Featuring our AGCO Power four-cylinder 4.4L engine and up to 26 GPM of hydraulic flow.



## 6700 SERIES

# BIGGEST

**115-125 RATED ENGINE HP** — Or go to the biggest, with a base weight of 9,021-10,187 lbs. and a lift capacity of 9,390 lbs. And our AGCO Power four-cylinder 4.4L engine with hydraulic flow up to 26 GPM.



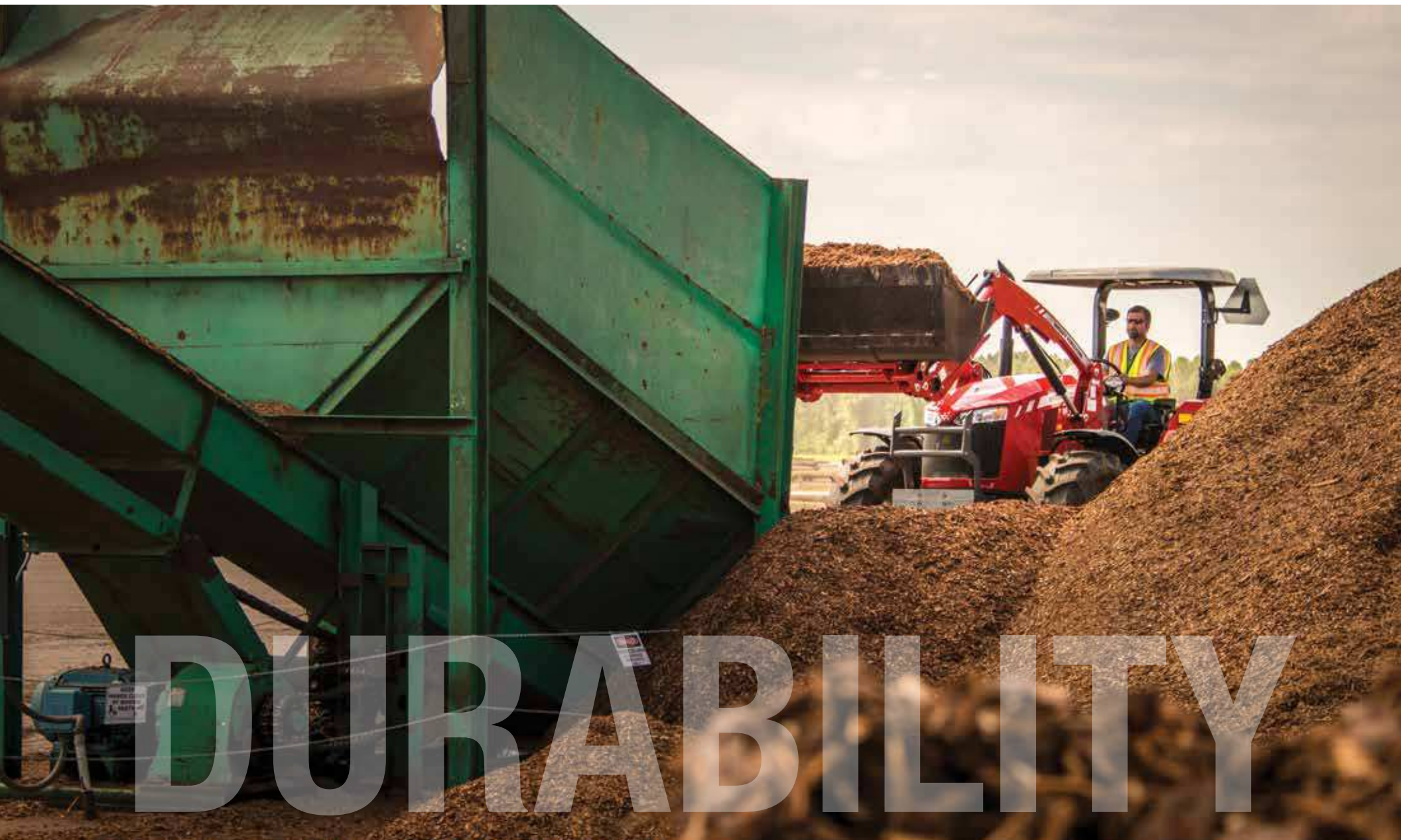
## WE'VE NEVER BUILT TRACTORS QUITE LIKE THIS.

The heavy-duty Global Series gives you the power, stability and versatility to handle tougher jobs so you can get more done, regardless of your operation.

- **HAY** – Whether you're mowing, tedding, raking, baling or hauling, these tractors were designed to pull bigger balers, bigger mower conditioners and carry heavier bales than other tractors in their class. Plus, they match up perfectly with Hesston by Massey Ferguson® hay equipment.
- **DAIRY** – Dairy operations need a tough, do-everything tractor that can handle the heavy lifting while still being nimble and maneuverable in tight spaces. Because the days can be long, it also has to be comfortable. These are those tractors.
- **FARMS** – For farms of all sizes, these tractors are going to be your new best friend. From the field to the barn and everything in between, you'll have a stable, easy-to-operate machine that won't let you down.
- **LOADER WORK** – You've got a ton of different jobs to tend to each day, and you need a loader that can handle all of them. The heavy lift capacity is ideal for applications such as lifting, grading and snow removal. And with float mode, the loader raises and lowers to follow the contour of the ground.



**DURABILITY IS IN OUR DNA.**

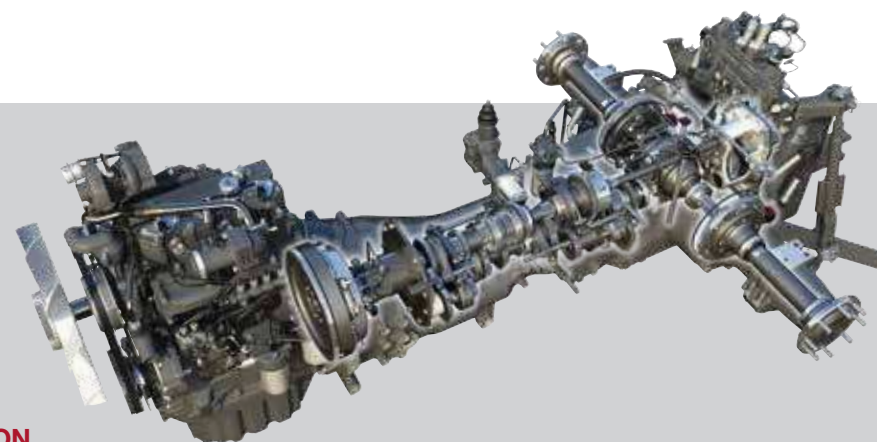


**IT'S SIMPLE.** When all the key components of a tractor are built together, they work better together. That's why we manufacture the engines, transmissions and other key parts for these series in the same facility, ensuring unmatched quality, efficiency and reliability. Everywhere you look, and on everything you touch, you'll see and feel our advanced, high-quality engineering.

## ENGINE

At the heart of it all is a rugged, reliable, fuel-efficient AGCO Power Tier 4 Final engine. These engines range from 70-130 horsepower and are specifically designed for North American farms. The 4700 Series features a 3.3 liter three-cylinder engine, while the 5700 and 6700 Series feature a larger, 4.4 liter four-cylinder engine.

- **POWERFUL AND QUIET** – The turbo-charged diesel power plant delivers maximum torque at low engine speeds. You not only get clean exhaust and minimal fuel consumption, but also both noise and tractor wear and tear are reduced. You enjoy an unmatched operator experience and a very comfortable cost of operation.
- **RUN SMOOTH** – Four valves per cylinder improve airflow and enhance the fuel/air mixture, so you run cool and smooth hour after hour, keeping service costs low.
- **INTELLIGENCE INSIDE** – The AGCO SisuTronic EEM4 engine management system monitors every aspect of the engine's operation, automatically adjusting fuel flow, injection timing and other functions to deliver consistently outstanding performance and low fuel consumption.
- **NO NEED FOR A DPF** – These tractors don't require a diesel particulate filter (DPF). It's still environmentally friendly while saving you money, time and fuel.



## TRANSMISSION

Three easy-to-operate transmission options provide multiple speeds, whether you're maneuvering through headlands or around tight spaces in the barn or yard. Choose from the dependable 8x8 Synchro Mechanical Shuttle, where changing from forward to reverse is as simple as pressing the clutch pedal and moving the shuttle lever. Or choose the 12x12 Synchro Mechanical Shuttle for a more comfortable ride and less operator fatigue. And our final option, the 12x12 Synchro Power Shuttle on deluxe models allows directional changes to be made by moving the lever — with no clutch — ideal for loader work and hay applications.

- **THE POWER TO CHOOSE** –
  - 8x8 Mechanical Shuttle Transmission on the MF4707, MF4708 and MF4709 classic models.
  - 12x12 Synchro Mechanical Shuttle Transmission on the MF4710, MF5710 and MF5711 classic models.
  - 12x12 Synchro Power Shuttle (SPS) Transmission on all 4700 and 5700 Series deluxe models and 6700 Series models.
- **COMFORT CONTROL DIAL\*** – Determine the reactivity of the shuttle during direction changes, easily adjusting how the transmission engages when starting from a stopped position.
- **EASY SHIFT CONTROL\*** – For frequent shifting operations, like roading and headland turns, simply press a button to clutch, shift gears, then release the button to engage the transmission.

*\*On Power Shuttle Only*





# A TRACTOR THAT WON'T HOLD YOU BACK.

You've got a ton of different jobs to tend to each day, and the last thing you need is a feeble tractor that shies away from the really tough ones. The 4700, 5700 and 6700 Series are heavier than other tractors in their class, designed to handle larger, heavier implements and more demanding applications. So yeah, they'll be there when you need them.

- **HEAVY-DUTY** – These three Series feature best-in-class base weight, and these heavier frames are purpose-built for more pulling power and lift capacity. With better maneuverability and more stability, you can rely on these tractors for even the most heavy-duty jobs.
- **THREE-POINT HITCH** – There's virtually no limit to the range of implements you can put behind these tractors. Two gear pumps power the simple, open-center hydraulic system, and a heavy-duty three-point hitch helps provide a rear lifting capacity ranging from 4,850 to 9,390 lbs.
- **PTO** – A standard 540/1000 PTO allows you to use a variety of implements, no matter what the application may be. 4700 and 5700 classic models offer an optional 540/540E. 5700 deluxe and 6700 models offer 540/540E/1000 PTO.
- **TRELLEBORG TIRES** – Trelleborg premium radial tires come standard. Built exclusively for agricultural use, these tires provide better traction in the field, reduce soil compaction and improve fuel economy. Plus, the patented interlug terraces enhance self-cleaning in muddy soil. As a result, you enjoy a smoother ride and reduced wear on the tractor.
- **TELESCOPIC LOWER STABILIZING ARMS** – Standard on deluxe models, these heavier-duty stabilizing arms let you custom-adjust for any implement, for unmatched ease-of-use and greater control.
- **EXTENDABLE LOWER BALL ENDS** – Because extending the ball ends is as simple as pulling a ring on the link, implement attachment is always quick and easy.
- **2WD/4WD** – The 2WD axle option on all 4700 series and 5710 models, offers reduced weight and greater maneuverability, with five alternate track-width settings to accommodate your crop or field. The 4700 classic 4WD has a limited slip differential AutoLock ensuring drive is evenly distributed to both wheels for better traction and greater stability. Deluxe 4WD models feature the HydraLock, a hydraulic-controlled differential lock on the front axles. AutoLock and HydraLock are activated and deactivated via a rocker switch.
- **TIGHT TURNING RADIUS** – Sometimes you need to work in confined spaces. These tractors feature a tighter turning radius for easier maneuverability with better stability.
- **CAB** – The 4700 and 5700 are available in classic or deluxe cab options, while the 6700 is deluxe cab only.









**DESIGNED WITH YOU IN MIND.**

# EASE OF USE



**8**

**SERVICEABILITY** – Whether it's access to debris screens and filters, the oil dipstick and oil fill location or the fuel tank, almost everything can be easily reached from ground level. And with a simple release latch for the hood, basic preventative maintenance takes no time at all.



The 4700, 5700 and 6700 Series are built for tough, demanding work in all kinds of environments. They are designed with simplicity of operation at their core with an emphasis on an operator environment that provides unmatched comfort. From the ground up, these tractors are engineered for smart, ergonomic, long-lasting operation.

- **GRAB RAILS** – Mounted outside the operator station for easy access into the tractor.
- **FLAT FLOOR** – All 5700 and 6700 models come with a flat floor standard. 4700 models have a semi-flat floor.
- **EASY-REACH CONTROLS** – Essential controls are ergonomically positioned for easy operation and comfort.
- **ADJUSTABLE SEAT** – A spring tension-control knob adjusts the seat to comfortably accommodate operators of many sizes. While the 5700 deluxe and 6700 models have a swivel seat. Optional air ride seat includes swivel.
- **INSTRUCTOR SEAT** – A second seat allows for an instructor. Optional on 4700 classic and deluxe and 5700 classic cab models. Standard on 5700 deluxe and 6700 cab models.
- **TILT STEERING** – On deluxe cab models, a tiltable and telescopic steering column adjusts for maximum productivity and comfort. Classic cab and deluxe platform feature tilt only, while classic platform is stationary.
- **WORK LIGHT** – Classic models have a mounted work light on the rear fender, while cab models feature four roof mounted lights, giving you improved visibility and comfort at night.
- **AND MORE** – Cupholders, toolbox and floor mat are standard on all models.



#### WE'VE THOUGHT OF MOST EVERYTHING.

- **DASH DISPLAY** – The dash display on deluxe models includes a tractor performance monitor that provides data on DEF fluid level, fuel level, temperature range and more. Plus, you can monitor engine hours, acres per hour, fuel consumption per hour and per acre, fault codes, PTO speed and ground speed with just the push of a button.
- **LOADER JOYSTICK** – Raise, lower, curl and dump the bucket with incredible precision, even in tight spots and tough applications. You'll appreciate the added integrated maneuverability.
- **DEBRIS SHIELD** – On platform models, shields on both sides of the operator station deflect engine heat and debris for additional protection and a comfortable working environment.
- **ADJUSTABLE WHEELS** – With a wide range of wheel-spacing settings, these tractors are versatile enough to handle everything from specialty farming applications, like small-scale row crops and vegetables, to roadside mowing and land management applications.
- **LOADER FLOAT CONTROL** – Raise and lower the loader to the contour of the ground or road for the flexibility to efficiently handle grading and snow removal.
- **POWER SHUTTLE** – For loading trucks, stacking hay or other loader work, the optional power shuttle lever provides easy electro-hydraulic declutch and directional changes without the need to press the foot clutch pedal.

# SPECIFICATIONS\*

MODEL	MF4707	MF4708	MF4709	MF4710	MF5710	MF5711	MF6712	MF6713	
ENGINE									
Max engine power HP (kW) @ 2,000 RPM	75 (55.9)	85 (63.4)	95 (70.8)	100 (74.6)	100 (74.6)	110 (82)	120 (89.5)	130 (96.9)	
Rated engine HP (kW)	70 (52.2)	80 (59.6)	90 (67.1)	100 (74.6)	95 (70.8)	105 (78.3)	115 (85.8)	125 (93.2)	
Rated engine speed	2,200 RPM								
PTO HP (kW)	58 (43.2)	68 (50.7)**	78 (58.1)**	88 (65.6)**	83 (61.9) @ 2,200 RPM 90 (67.1) @ 2,000 RPM	93 (69.4) @ 2,200 RPM 99 (73.8) @ 2,000 RPM	99 (73.8) @ 2,200 RPM 106 (79) @ 2,000 RPM	109 (81.3) @ 2,200 RPM 114 (85) @ 2,000 RPM	
Engine	AGCO Power 3-cyl, 3.3 L, intercooled turbocharged, high-pressure common-rail direct fuel injection (HPCR)				AGCO Power 4-cyl, 4.4 L, intercooled turbocharged, high-pressure common-rail direct fuel injection (HPCR)				
Emissions control; EPA Tier 4-compliant	SCR technology (post-combustion DEF), diesel oxidation catalyst (DOC)								
DRIVETRAIN									
Transmission type	Classic: 8Fx8R, 2-range, synchro-shuttle, mechanical shuttle lever Deluxe: 12Fx12R, 2-range, power-shuttle, electro-hydraulic shuttle lever			Classic: 12Fx12R, 2-range, synchro-shuttle, mechanical shuttle lever Deluxe: 12Fx12R, 2-range, power-shuttle, electro-hydraulic shuttle lever		Classic: 12Fx12R, 2-range, synchro-shuttle, mechanical shuttle lever; Deluxe: 12Fx12R, 2-range, power-shuttle, electro-hydraulic shuttle lever		Deluxe: 12Fx12R, 2-range, power-shuttle, electro-hydraulic shuttle lever	
Clutch	Classic: Dry clutch with foot pedal control; Deluxe: Wet clutch with foot pedal control; Deluxe: Declutch "easy-shift button" on gear shift knob and electro-hydraulic shuttle lever				Classic: Dry clutch with foot pedal control; Deluxe: Wet clutch with foot pedal control; Deluxe: Declutch "easy-shift button" on gear shift knob and electro-hydraulic shuttle lever		Deluxe: Wet clutch with foot pedal control; Deluxe: Declutch "easy-shift button" on gear shift knob and electro-hydraulic shuttle lever		
Rear axle	Flange-type with internal planetary final drives								
Brakes	4 wheel disc brakes, independently controlled via foot pedals								
Differential lock	Rear axle engaged via electro-hydraulic rocker switch								
Front axle	2WD – adjustable front axle; 4WD – cast steel fixed front axle with center drive line and combination bevel-gear/planetary final drives; 4WD front axle differential lock – Classic: AutoLock Deluxe: HydraLock				5710: 2WD – adjustable front axle; 5710 & 5711: 4WD – cast steel fixed front axle, center drive line, planetary final drives; 4WD front axle differential lock; HydraLock		Deluxe: 4WD – cast steel fixed front axle, center drive line, planetary final drives; 4WD front axle differential lock; HydraLock		





MODEL	MF4707	MF4708	MF4709	MF4710	MF5710	MF5711	MF6712	MF6713
DIMENSIONS								
Wheelbase in. (mm)	88.5 (2,250)			95.7 (2,431)			98.4 (2,500)	
Minimum width in. (mm)	Std. radial tires – rear 420/85R30, 60.3 (1,533)				Std. radial tires – rear 460/85R34, 64.8 (1,646)			
Base weight without ballast lbs. (kg.)	2WD ROPS: 7,478 (3,392); 2WD Cab: 8,294 (3,762)				2WD ROPS: 8,845 (4,012)		4WD ROPS: 9,371 (4,250)	
	4WD ROPS: 7,734 (3,508); 4WD Cab: 8,644 (3,921)				2WD Cab: 9,661 (4,382)		4WD Cab: 10,187 (4,621)	
					4WD ROPS: 9,195 (4,171)			
					4WD Cab: 10,011 (4,541)			
Fuel capacity gal. (L)	27.7 (105), plastic tank under platform, ground fill; <b>Deluxe:</b> Additional fuel tank guard				38.3 (145), ground fill; <b>Deluxe:</b> fuel tank guard		38.3 (145), ground fill; fuel tank guard	
HYDRAULICS								
Hydraulic system	Open center system, single pump							
Hydraulic flow @ rear remotes gpm (lpm)	17.7 (67)				<b>Classic:</b> Main Pump 15.1 (57) <b>Deluxe:</b> Main Pump 15.1 (57); Aux Pump 10.8 (41); Combined 25.9 (98)		Main Pump 15.1 (57) Aux Pump 10.8 (41) Combined 25.9 (98)	
Rear remote valves	<b>Classic:</b> 1 valve Std., DA, FL or Opt. 2 valves, factory installed, DA, KO, FL <b>Deluxe:</b> 2 valves, factory installed, DA, KO, FL or Opt. 3rd valve, field-installed, DA, FL only All valves spring return to neutral (SRN)				2 factory valves, double-acting, kickout, float, DA, KO, FL; Opt. 3rd valve, field-installed SRN			
Loader joystick	Opt., mounted on platform, valve on loader sub-frame with flat-face couplers							
3-point lift capacity lbs. (kg.) full stroke @ 24" (610 mm) behind ball ends	Category II, 4,850 (2,200)				Category II, 7,710 (3,497)		Category II, 9,390 (4,259)	
Rear PTO	Independent, electro-hydraulic engagement via switch, 540/1000 Std., 540/540E Opt.				<b>Classic:</b> 540/1000, 540/540E Opt. <b>Deluxe:</b> 540/540E/1000		540/540E/1000	
OPERATOR'S AREA								
Electrical system	12-volt DC system, 80-amp alternator, 7-pin trailer socket; <b>Deluxe:</b> Additional 30-amp auxiliary power socket							
Std. platform features	Semi-platform deck, folding ROPS, rubber mat, toolbox, L & R shields, grab handles				Flat-floor deck, folding ROPS, rubber mat, tool box, L & R shields, grab handles, cup holder			
Lighting (ROPS)	<b>Classic &amp; Deluxe:</b> 4 headlights, 2 rear signal/hazard lights, 1 rear ROPS work light; <b>Deluxe:</b> 2 additional mid-mount adjustable work lights							
Std. Steering	<b>Classic:</b> fixed; <b>Deluxe:</b> tilt				<b>Classic cab:</b> tilt steering; <b>Deluxe platform:</b> tilt steering; <b>Deluxe cab:</b> tilt and telescopic steering		<b>Platform:</b> tilt steering; <b>Cab:</b> tilt and telescopic steering;	
Std. Seat	Spring suspension mounted seat, adjustable fore and aft with mechanical weight adjustment, retractable seat belt							

CLASSIC	DELUXE
MF4707, MF4708 & MF4709 8x8; MF4710, MF5710 & MF5711 12x12; Mechanical shuttle	All models 12x12 Power shuttle
Fixed steering column	Tilt steering column
Analog & digital instrument panel	Analog & digital instrument panel w/ performance monitor
Lever controlled 3-point linkage opt. draft control	Lever controlled 3-point linkage w/ draft control
	External lift control (LH fender)
4WD front axle; Limited slip differential – AutoLock	4WD front axle; Hydraulically actuated differential – HydraLock
Chain link stabilizers	Telescopic stabilizers
Standard hydraulic valve; DA, FL	Standard hydraulic valves; DA, KO, FL + DA, KO, FL
	Auxiliary electrical socket
	Mid-mounted front work lights
	Standard side fender extensions
	Standard fuel tank guard

\*Manufacturers estimate at time of publication, subject to change without prior notification.

\*\*With mechanical transmission

## LOW-RATE, FLEXIBLE FINANCING.

With competitive rates and easy terms, your Massey Ferguson dealer and AGCO Finance® offer great ways to buy, lease or rent your new machine.

## QUALITY PARTS.



Genuine Massey Ferguson replacement parts are made to the same high standards as those used on the assembly line so you can always keep your Global Series tractor running like new.

## SHOW YOUR MASSEY FERGUSON PRIDE.

Choose from collectibles, toys, work and leisure wear, accessories and more. Visit [shopagco.com](http://shopagco.com) today.

## AGCO ANSWERS.

At AGCO, customer care isn't just a department. It's a commitment. We'll do our best to answer any questions promptly or put you in touch with someone who can. AGCO Answers: (877) 525-4384 or [agcoanswers@agcocorp.com](mailto:agcoanswers@agcocorp.com)

We proudly support:



For more than 25 years, in more than 140 countries worldwide, AGCO has been on a mission to become the single resource farmers can depend on for innovative, leading-edge thinking, equipment and technology. And, today, you know AGCO brands, even if you don't know the AGCO name. While AGCO equipment may not all share the same logo or same color, they all have one thing in common – the ability to help farmers be as productive and profitable as they possibly can be, regardless of the tasks at hand. [agcocorp.com](http://agcocorp.com)

MASSEY FERGUSON

FENDT



Challenger

GLENER



MIX  
Paper from  
responsible sources  
FSC® C010364