

**FSA20-EQU18.0, ITEM# 31**  
**COMPRESSOR: Air Compressor - Trailer Mounted**  
**SULLIVAN-PALATEK BASE D185PDZ SHERIFF'S CONTRACT WORKSHEET**

<u>Model</u>	<u>Capacity (cfm)</u>	<u>Pressure (psi)</u>	<u>Engine</u>
D185PDZ	185	100	Deutz
108mm Diameter Twin Screw Air End		Sullivan-Palatek Electronic Controller (SPEC)	
• Exclusive Three Year Warranty On Air End		Digital Readouts:	
• Automatic 0 to 100% Capacity Control		• Compressor temperature	
• Two Stage Dry Type Air Filter - External Access		• Discharge Pressure	
• Multiple Service Connections		• Engine oil pressure	
• Oil Level Sight Gauge		• Engine temperature	
• Side by Side Coolers for Compressor and Engine		• Voltmeter	
• Cooler Access Panel for Cleaning		• Tachometer	
• Steel Fuel Tank		• Fuel level - low fuel warning and shutdown	
• Safety Chains		• Complete engine diagnostic tool	
• 15” Wheels & Tires		• Unit converter	
• Choice of Lunnette Eye or Ball Hitch on Height Adjustable Drawbar		• Multilingual capabilities	
• Large Full Length Tool Boxes in Each Side with Lockable Handles		• Waterproof up to six feet	
• Galvaneal Enclosure			
• Galvanized Wheel Wells and Internal Panels			
• Noise Level Limited to Maximum of 76 dBA at 7 Meters			
• Easily Removable Upper Enclosure			
• Automatic Shutdown and Protection System			
• Automatic Blowdown Valve			
• Unloaded Starting			



# D185PDZ

TIER 4 FINAL \ DEUTZ ENGINE \ PORTABLE COMPRESSOR



185CFM/100PSI

# SPECIFICATIONS

## Compressor

Model	D185PDZ
Rated Delivery	185 cfm (5.2 m <sup>3</sup> /min)
Rated Operating Pressure	100 psig (6.9 Bar)
Operating Pressure Range	70-125 psig (4.9 - 8.6 Bar)
Estimated Weight, Serviced	2,340 lbs
Dimensions L x W x H (in")	134" x 55" x 70"

## Engine

Type	Diesel
Make & Model	DEUTZ D2.9L4 Tier 4 Final
Idle Speed	1650 RPM
Fuel Tank Capacity	29 gal (109.8 L)
Horsepower @ rated RPM	49 HP
Full Load Speed	2600 RPM



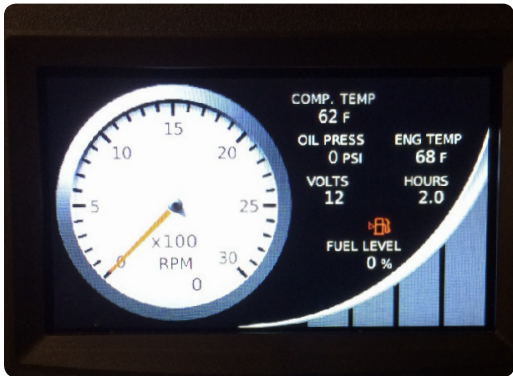
108mm Air End, designed and made in Michigan City, IN



DEUTZ DOC, Diesel Oxidation Catalyst; allows for maintenance free operation



Easy Access fuel filter, oil filter and dipstick



Sullivan-Palatek Electronic Controller (SPEC)

# FEATURES

- 108mm Diameter Twin Screw Air End
- Exclusive Three Year Warranty On Air End
- Automatic 0 to 100% Capacity Control
- Two Stage Dry Type Air Filter - External Access
- Multiple Service Connections
- Oil Level Sight Gauge
- Side by Side Coolers for Compressor and Engine
- Cooler Access Panel for Cleaning
- Steel Fuel Tank
- Safety Chains
- 15" Wheels & Tires
- Choice of Lunnette Eye or Ball Hitch on Height Adjustable Drawbar
- Large Full Length Tool Boxes in Each Side with Lockable Handles
- Galvaneal Enclosure
- Galvanized Wheel Wells and Internal Panels
- Noise Level Limited to Maximum of 76 dBA at 7 Meters
- Easily Removable Upper Enclosure
- Automatic Shutdown and Protection System
- Automatic Blowdown Valve
- Unloaded Starting

# CONTROLLER

## Sullivan-Palatek Electronic Controller (SPEC)

### Digital Readouts:

- Compressor temperature
- Discharge Pressure
- Engine oil pressure
- Engine temperature
- Voltmeter
- Tachometer
- Fuel level - low fuel warning and shutdown
- Complete engine diagnostic tool
- Unit converter
- Multilingual capabilities
- Waterproof up to six feet

**Sullivan-Palatek, Inc.**  
1201 West US Highway 20  
Michigan City, IN 46360

219.874.2497    sullivan-palatek.com    info@palatek.com